

## 28.102 - WELLHEAD PROTECTION DISTRICTS.

### (1) Statement of Purpose.

The Common Council of the City of Madison finds that certain uses can seriously threaten or degrade groundwater quality. To promote the public health, safety, and general welfare of the City of Madison, the Wellhead Protection Districts are created to protect municipal water supplies.

### (2) Protection Zones.

Each wellhead shall have two (2) zones of protection around it.

- (a) Zone A is the area around the well in which it has been determined that groundwater and potential contaminants will take five (5) years or less to reach the pumping well.
- (b) Zone B is the area within a twelve hundred (1,200) foot radius around the well, except for the area in Zone A. (Am. by ORD-21-00009, 2-10-21)

### (3) Uses.

All uses in Zones A and B of any Wellhead Protection District shall be approved by the Water Utility General Manager or his/her designee. A use may be approved with conditions. Approval by the Water Utility General Manager or his/her designee is in addition to all other approvals required for the proposed use.

- (a) Permitted Uses In Zones A and B. Any use allowed as permitted in the principal zoning district, except those uses not approved pursuant to Sec. 13.22, MGO.
- (b) Conditional Uses in Zones A and B. Any use allowed as a conditional use in the principal zoning district except those uses not approved pursuant to Sec. 13.22.

### (4) Existing Uses.

Any lawful use existing at the time of the creation of a Wellhead Protection District may be continued, however, no expansion or enlargement of such use is allowed without approval pursuant to Sec. 13.22 by the Water Utility General Manager or his/her designee.

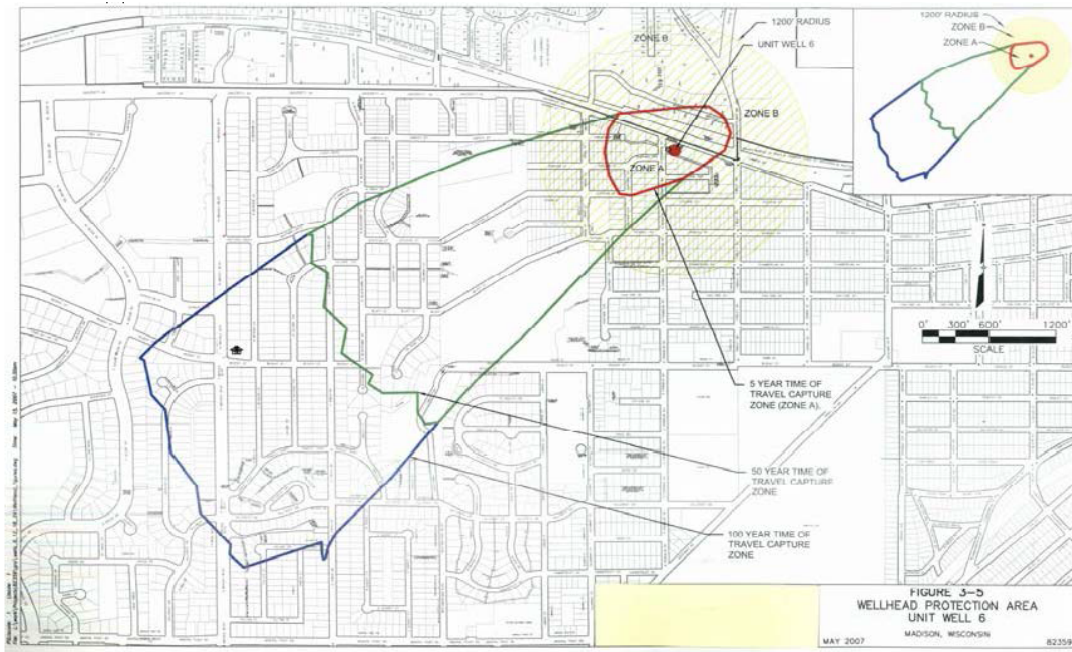
### (5) Wellhead Protection District No. 6.

The location of Well No. 6 and the surrounding Zone A and Zone B are shown in Sec. 28.102(5)

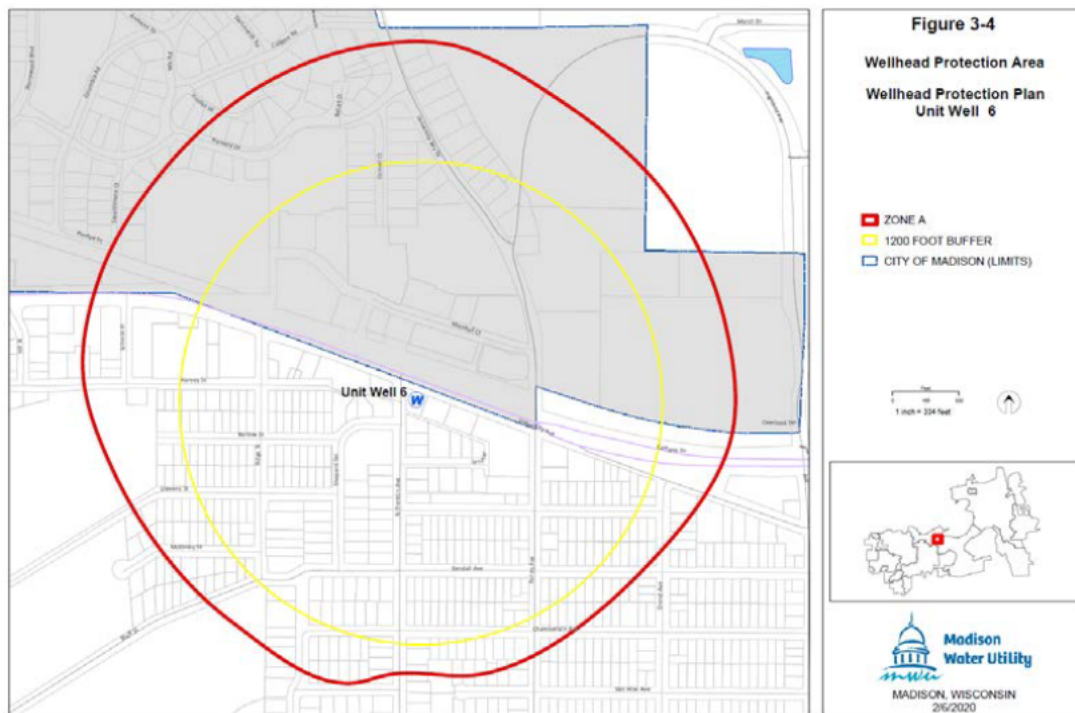
(a).

- (a) Wellhead Protection District No. 6.

## WELL NO. 6 - CURRENT



**WELL NO. 6 - NEW**



(Am. by ORD-21-00009, 2-10-21)

(6) Wellhead Protection District No. 7.

The location of Well No. 7 and the surrounding Zone A and Zone B are shown in Sec. 28.102(6)

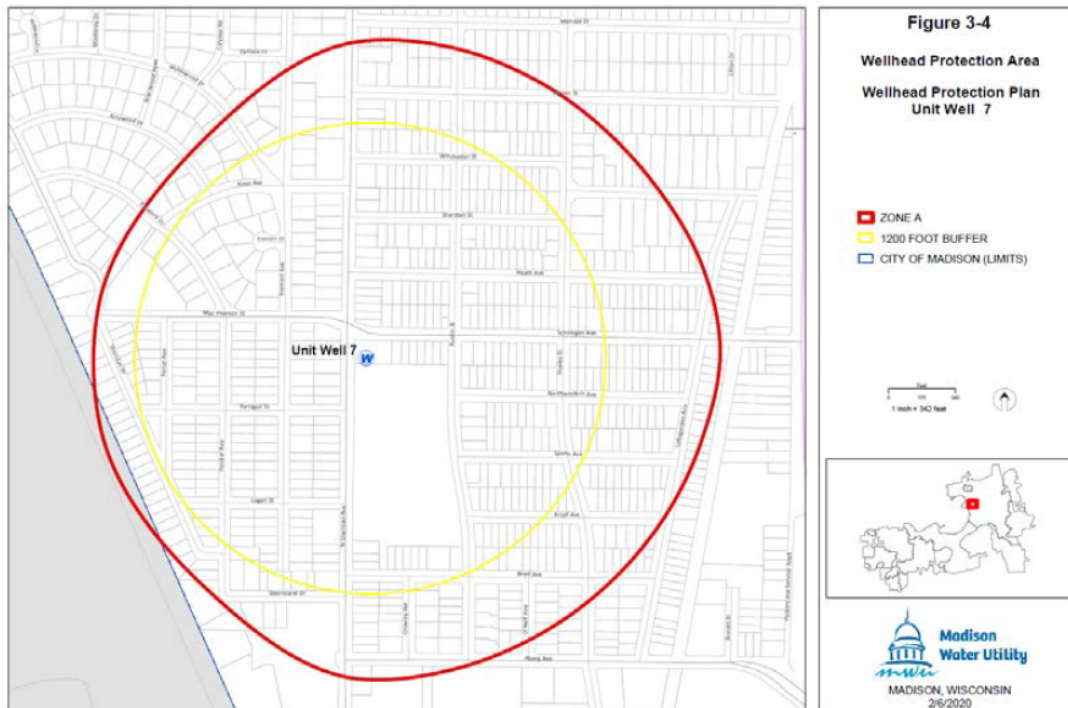
(a).

(a) Map of Wellhead Protection District No. 7.

**WELL NO. 7 - CURRENT**



**WELL NO. 7 - CURRENT**



(Am. by ORD-21-00009, 2-10-21)

(7) Wellhead Protection District No. 8.

The location of Well No. 8 and the surrounding Zone A and Zone B are shown in Sec. 28.102(7)

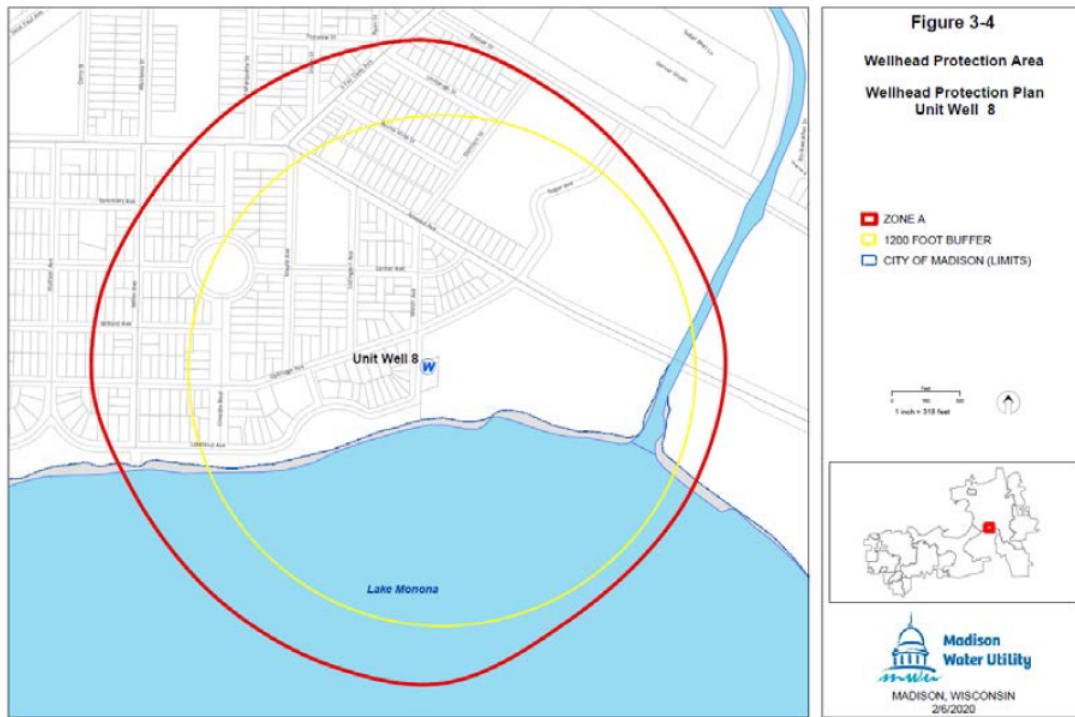
(a).

(a) Map of Wellhead Protection District No. 8.

**WELL NO. 8 - CURRENT**



**WELL NO. 8 - NEW**



(Am. by ORD-21-00009, 2-10-21)

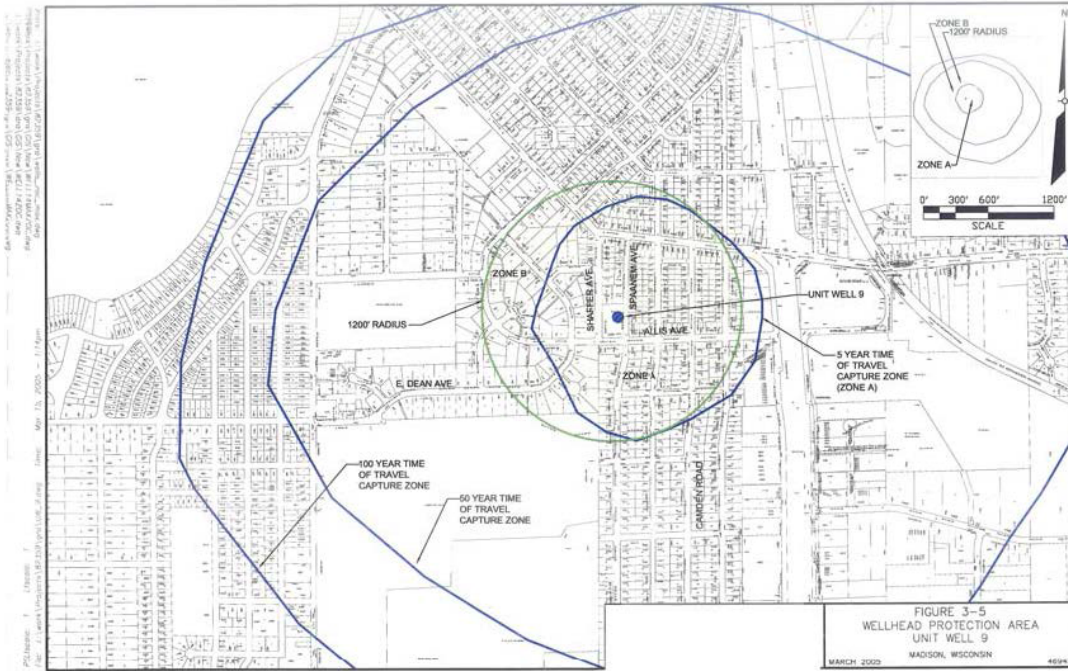
(8) Wellhead Protection District No. 9.

The location of Well No. 9 and the surrounding Zone A and Zone B are shown in Sec. 28.102(8)

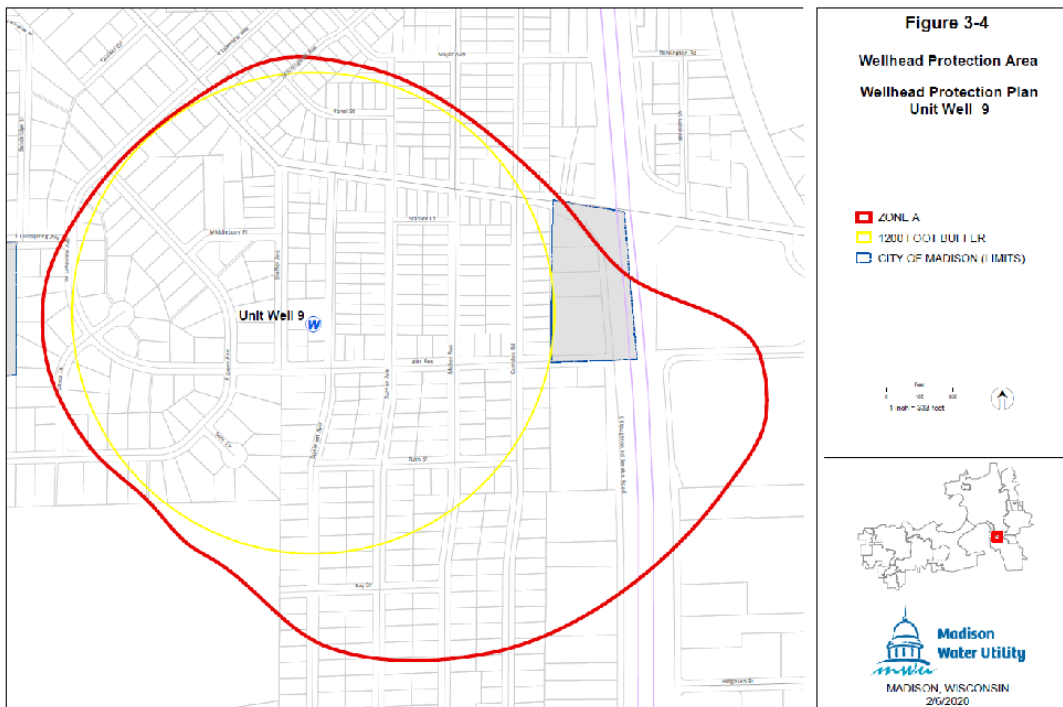
(a).

(a) Map of Wellhead Protection District No. 9.

**WELL NO. 9 - CURRENT**



**WELL NO. 9 - NEW**



(Am. by ORD-21-00009, 2-10-21)

(9) Reserved for Future Use. (Rpld. by ORD-21-00009, 2-10-21)

(10) Wellhead Protection District No. 11.

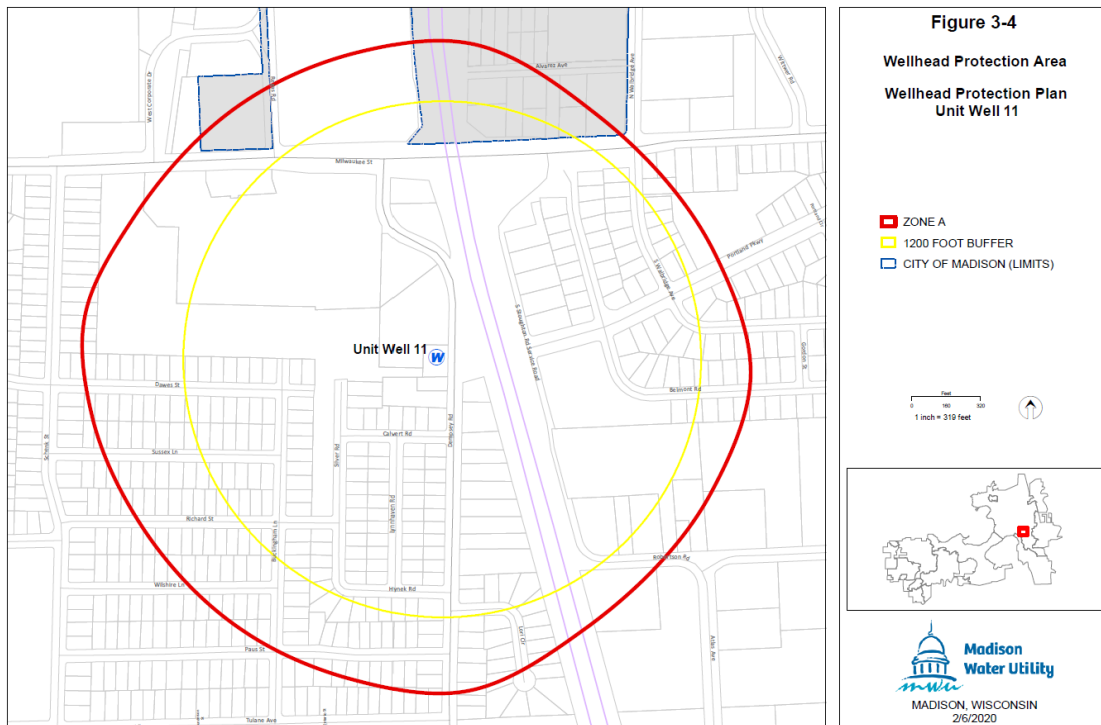
The location of Well No. 11 and the surrounding Zone A and Zone B are shown in Sec. 28.102(10)(a).

(a) Map of Wellhead Protection District No. 11.

WELL NO. 11 - CURRENT



WELL NO. 11 - NEW



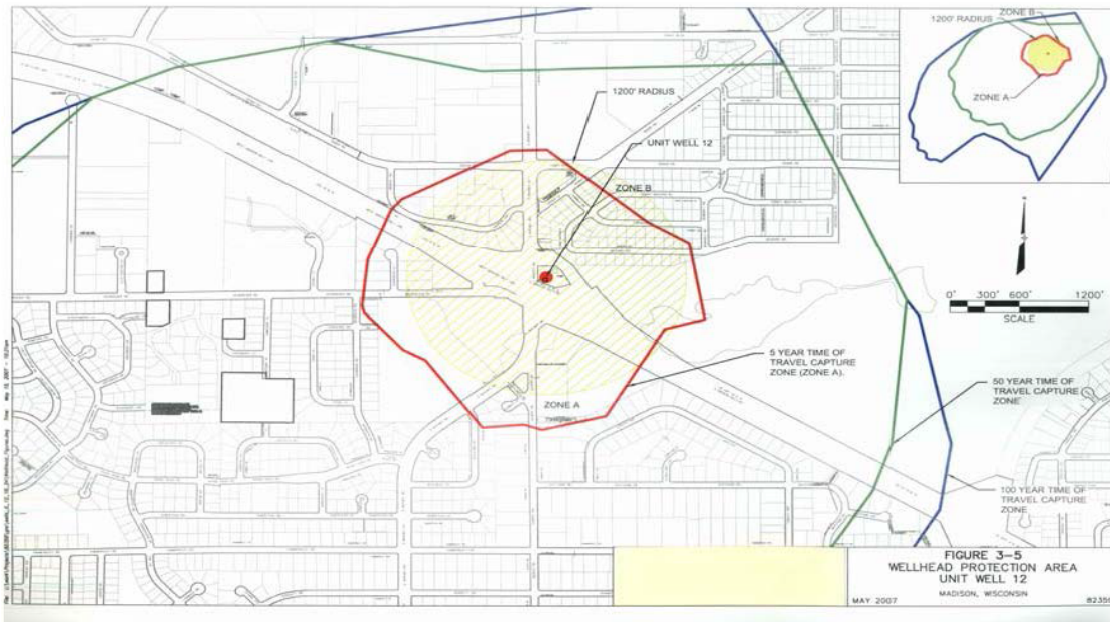
(Am. by ORD-21-00009, 2-10-21)

(11) Wellhead Protection District No. 12.

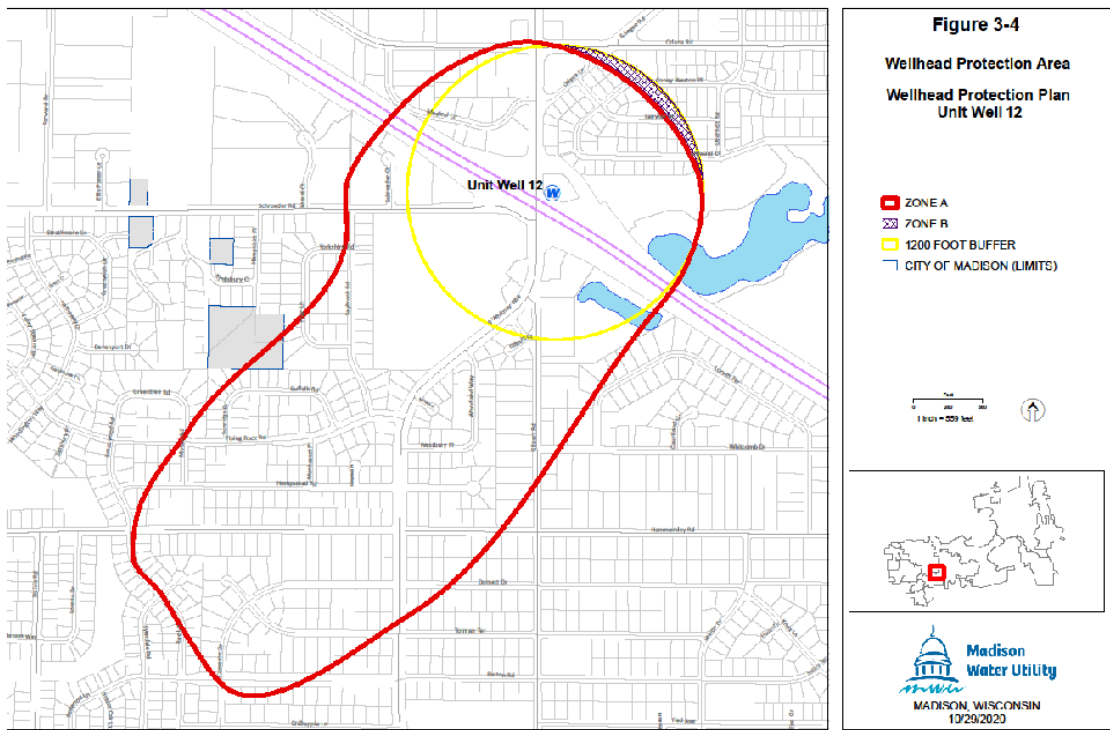
The location of Well No. 12 and the surrounding Zone A and Zone B are shown in Sec. 28.102(11)(a).

(a) Map of Wellhead District No. 12.

WELL NO. 12 - CURRENT



WELL NO. 12 - NEW



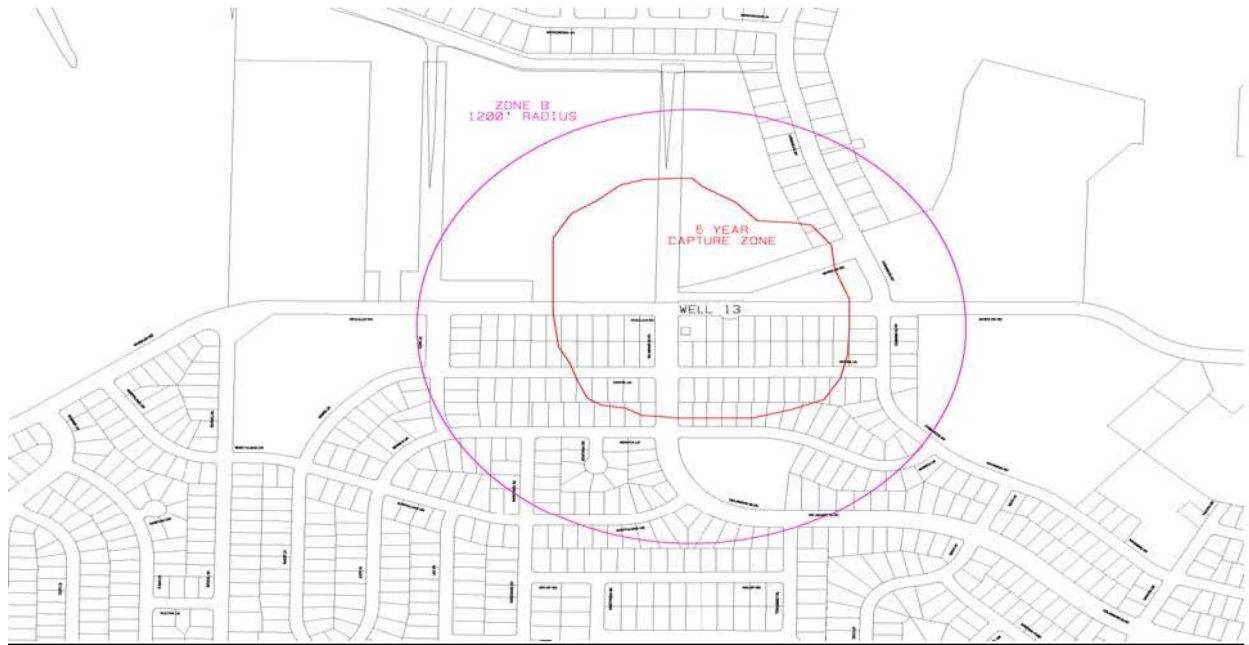
(Am. by ORD-21-00009, 2-10-21)

(12) Wellhead Protection District No. 13.

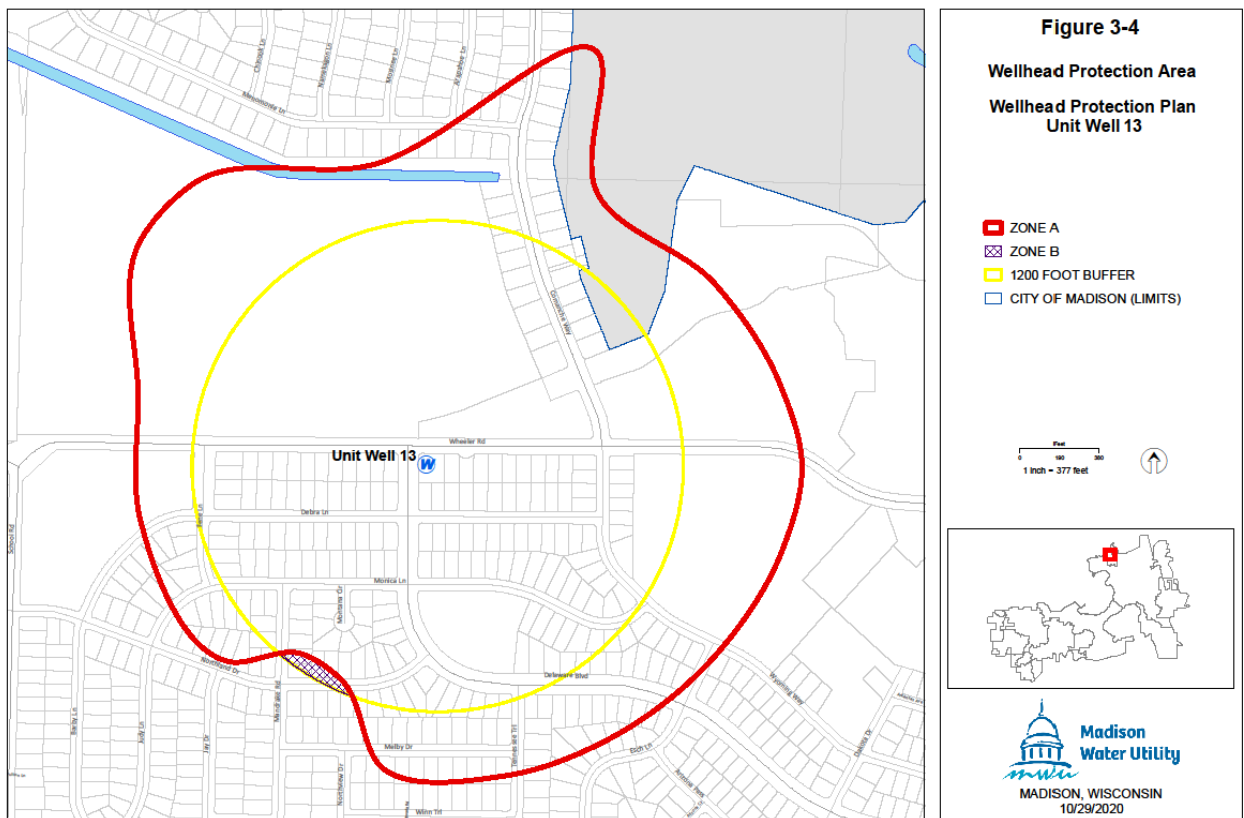
The location of Well No. 13 and the surrounding Zone A and Zone B are shown in Sec. 28.102(12)(a).

(a) Map of Wellhead Protection District No. 13.

WELL NO. 13 - CURRENT



**WELL NO. 13 - NEW**



(Am. by ORD-21-00009, 2-10-21)

(13) Wellhead Protection District No. 14.

The location of Well No. 14 and the surrounding Zone A and Zone B are shown in Sec. 28.102(13)(a).

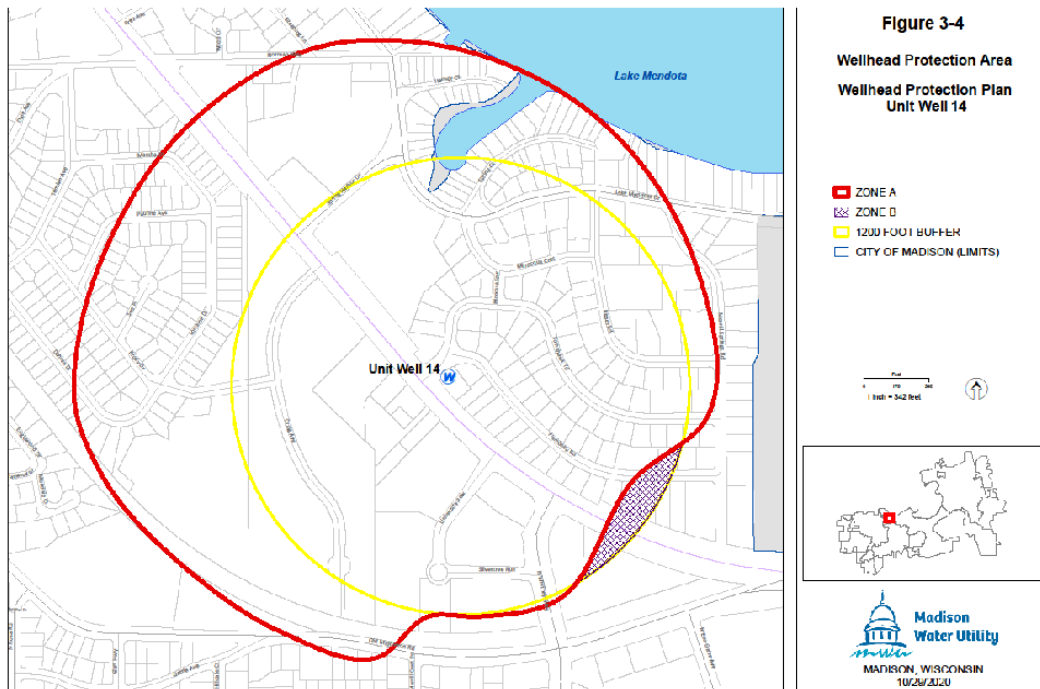
(a) Map of Wellhead Protection District No. 14.



## WELL NO. 14 - CURRENT



## WELL NO. 14 - NEW



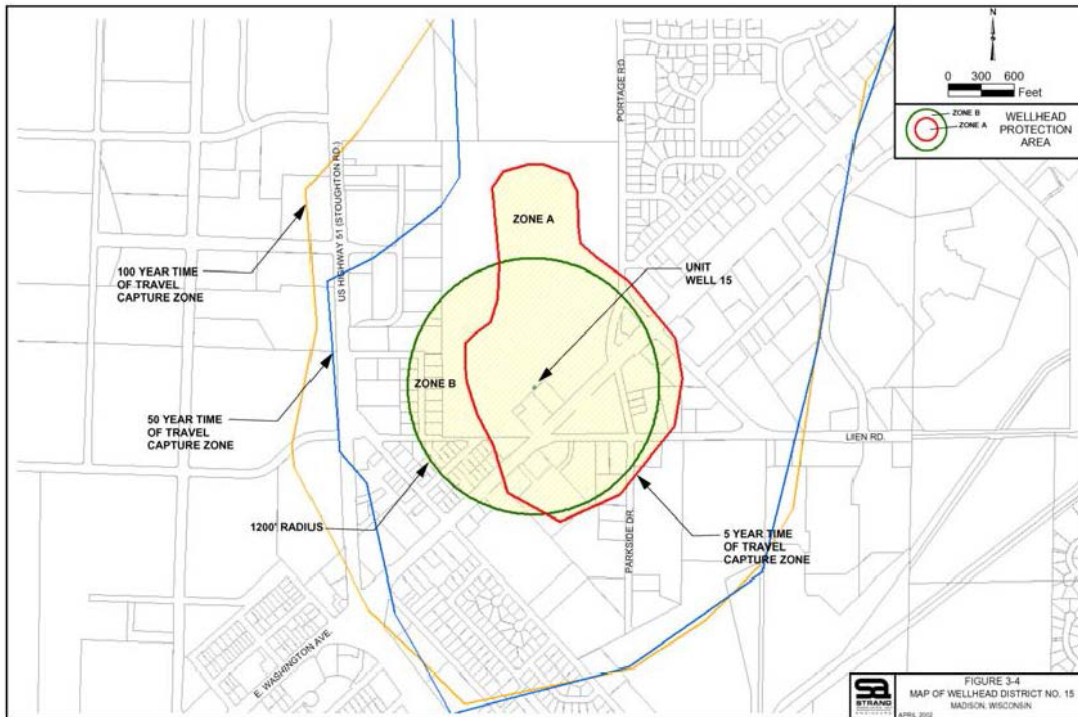
(Am. by ORD-21-00009, 2-10-21)

### (14) Wellhead Protection District No. 15.

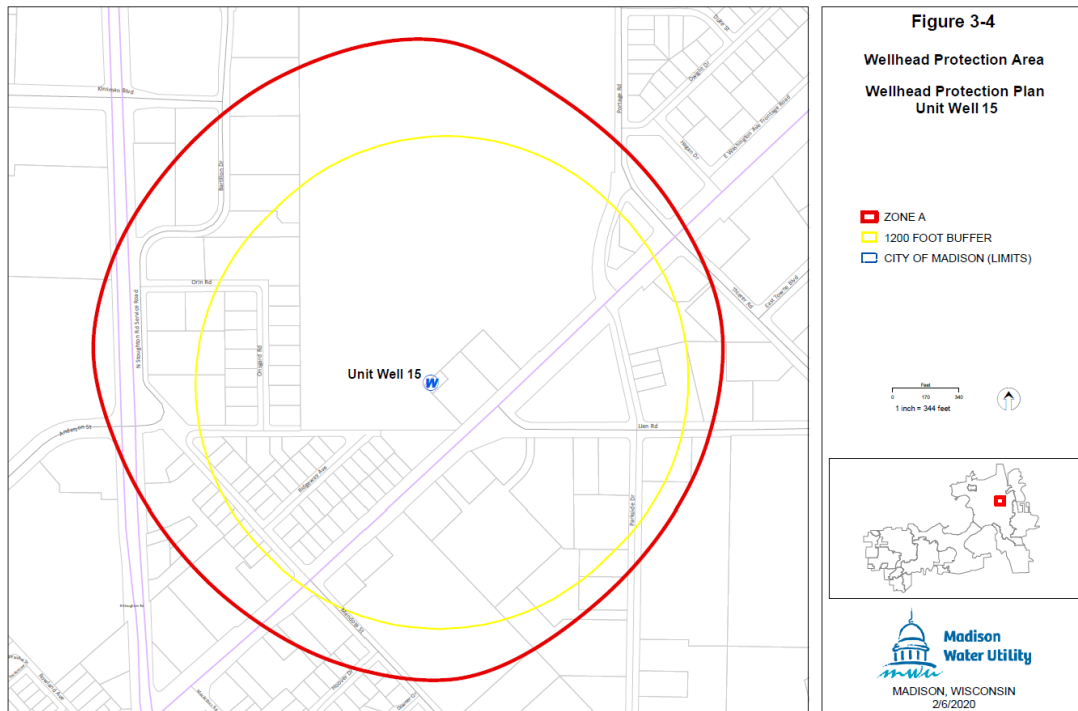
The location of Well No. 15 and the surrounding Zone A and Zone B are shown in Sec. 28.102(14)(a).

(a) Map of Wellhead Protection District No. 15.

WELL NO. 15 - CURRENT



WELL NO. 15 - NEW



;hn2; (Am.

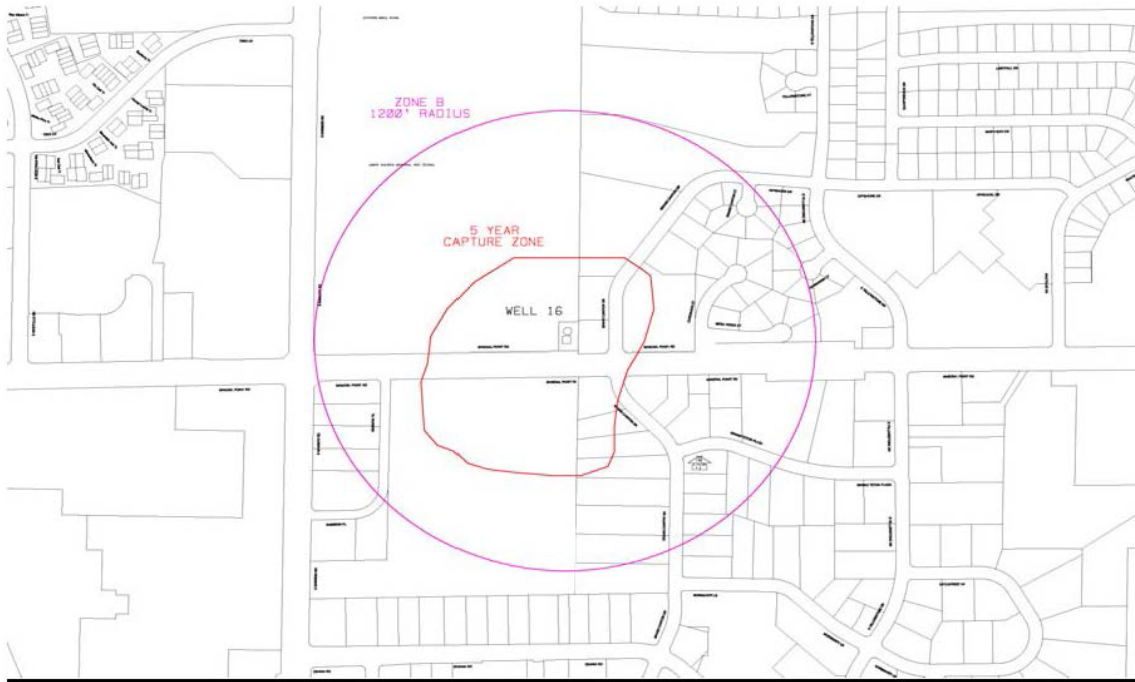
by ORD-21-00009, 2-10-21)

(15) Wellhead Protection District No. 16.

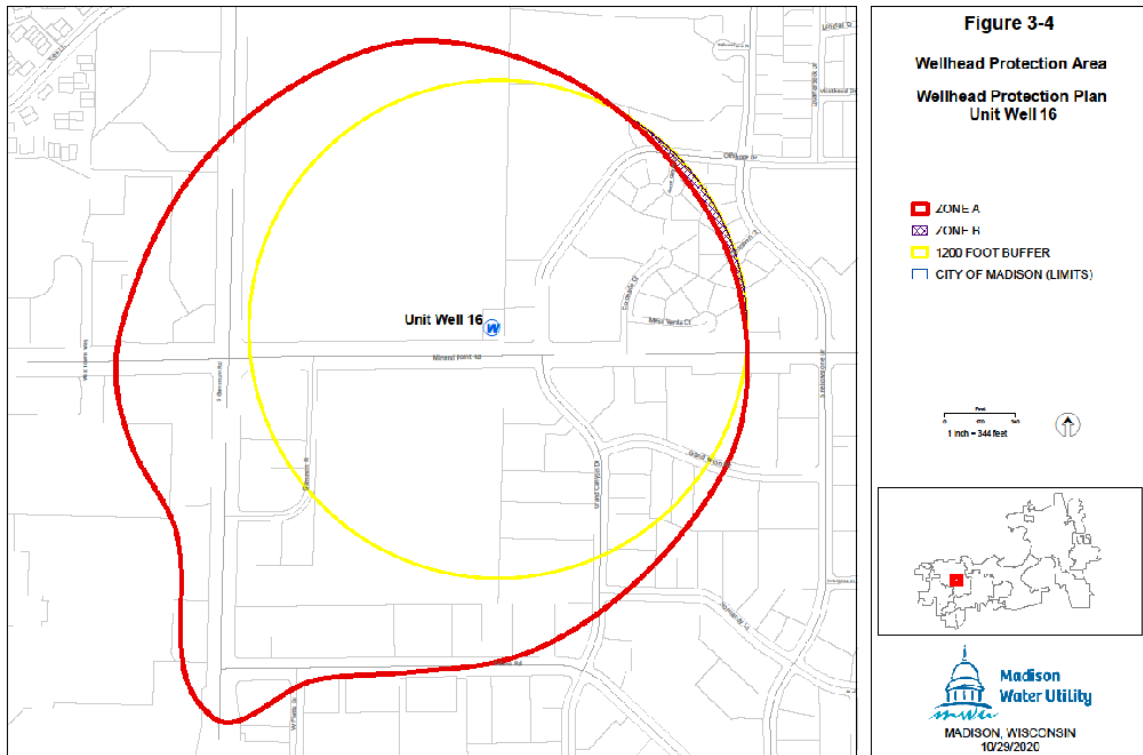
The location of Well No. 16 and the surrounding Zone A and Zone B are shown in Sec. 28.102(15)(a).

(a) Map of Wellhead Protection District No. 16.

WELL NO. 16 - CURRENT



WELL NO. 16 - NEW



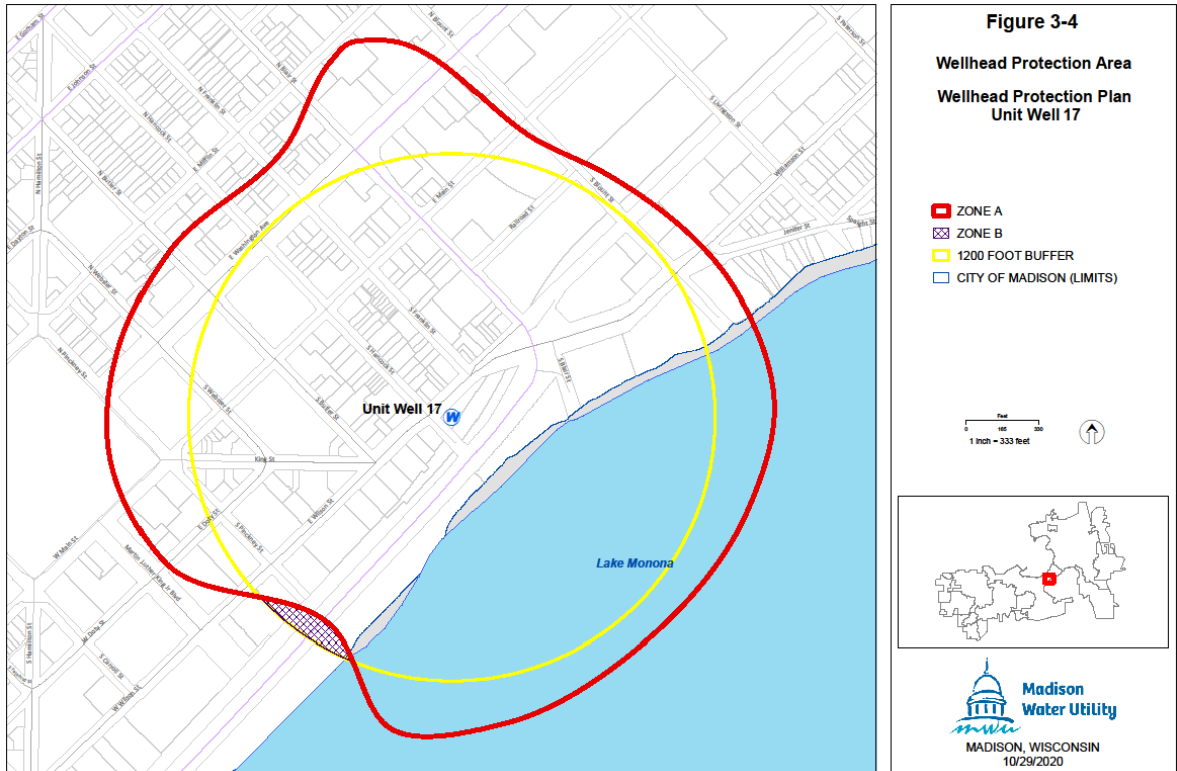
(Am. by ORD-21-00009, 2-10-21)

(16) Wellhead Protection District No. 17.

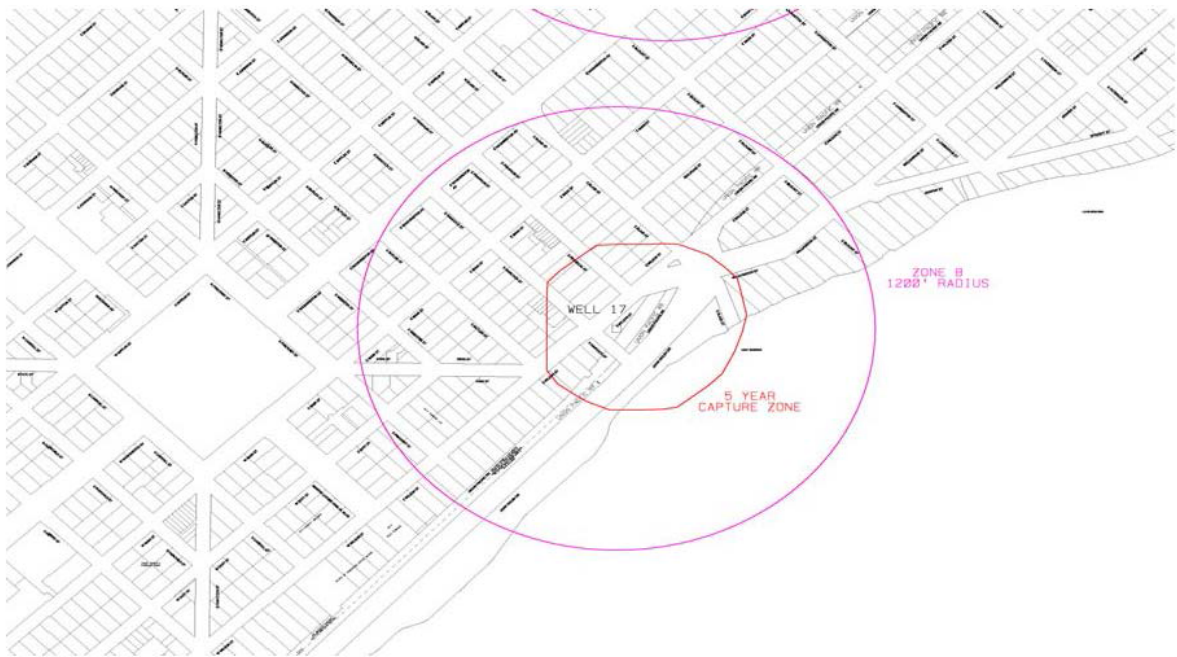
The location of Well No. 17 and the surrounding Zone A and Zone B are shown in Sec. 28.102(16)(a).

(a) Map of Wellhead Protection District No. 17.

**WELL NO. 17 - CURRENT**



**WELL NO. 17 - NEW**



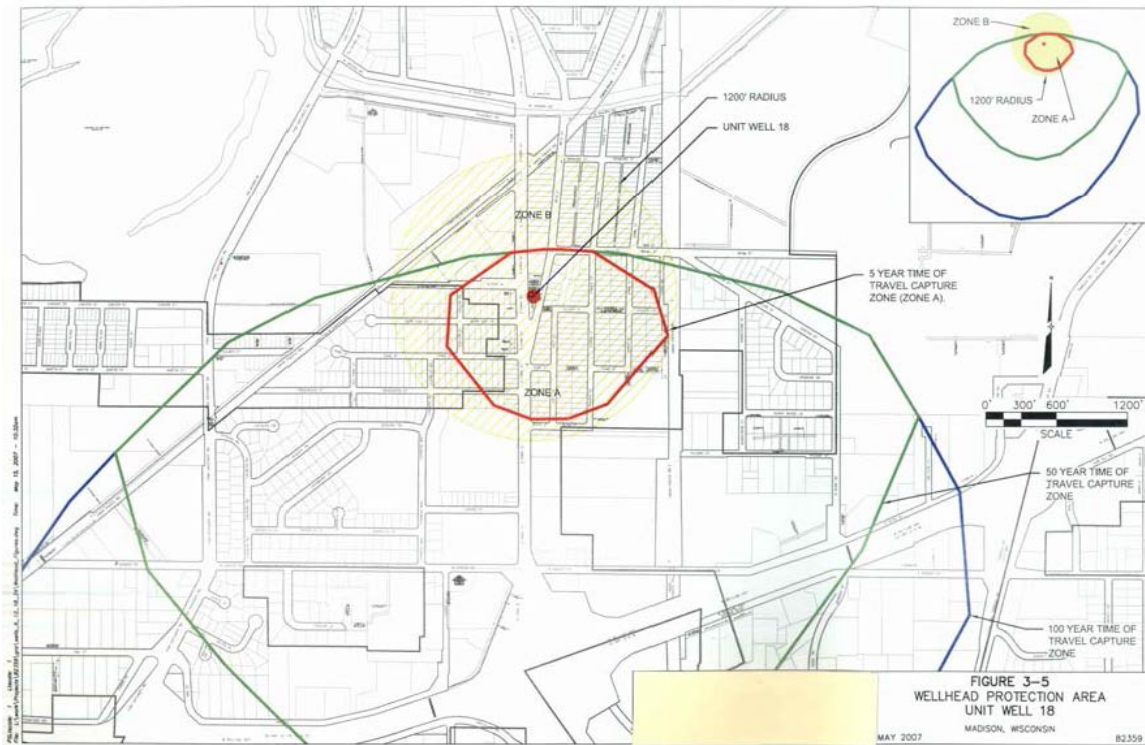
(Am. by ORD-21-00009, 2-10-21)

(17) Wellhead Protection District No. 18.

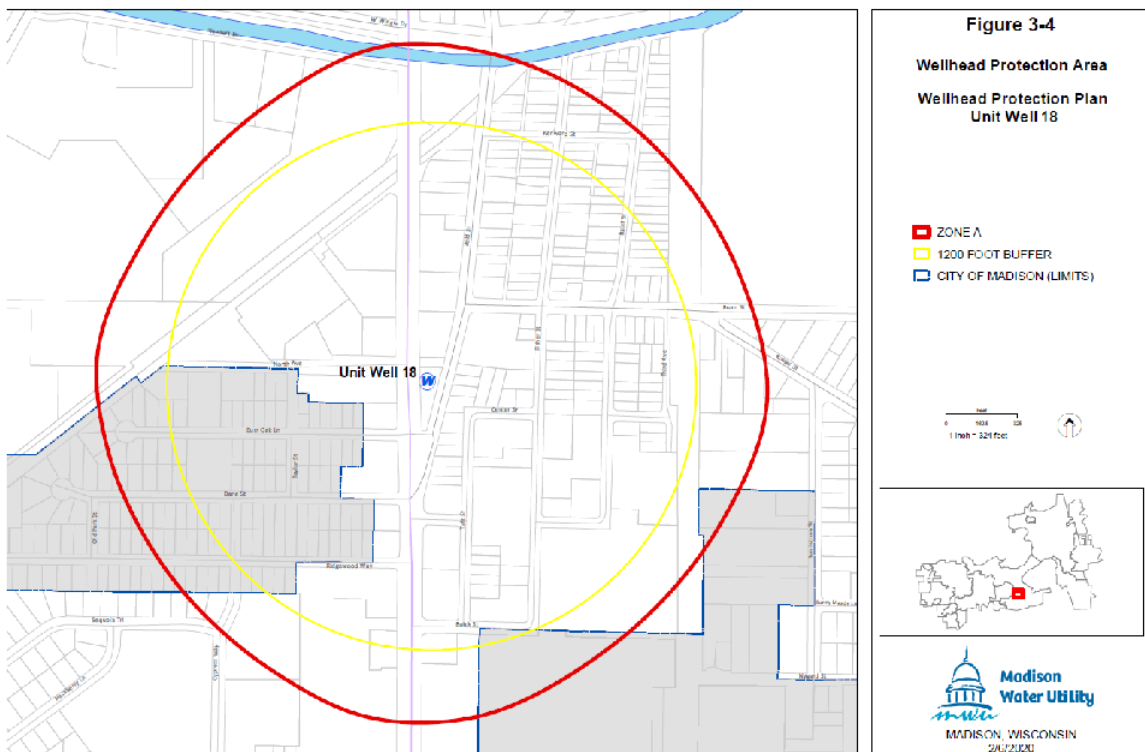
The location of Well No. 18 and the surrounding Zone A and Zone B are shown in Sec. 28.102(17)(a).

(a) Map of Wellhead Protection District No. 18.

### WELL NO. 18 - CURRENT



### WELL NO. 18 - NEW



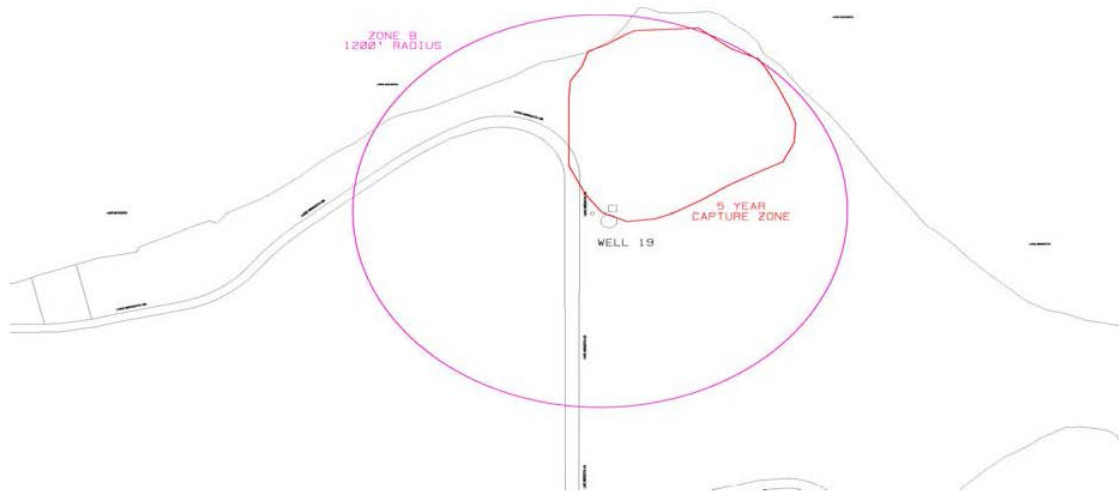
(Am. by ORD-21-00009, 2-10-21)

(18) Wellhead Protection District No. 19.

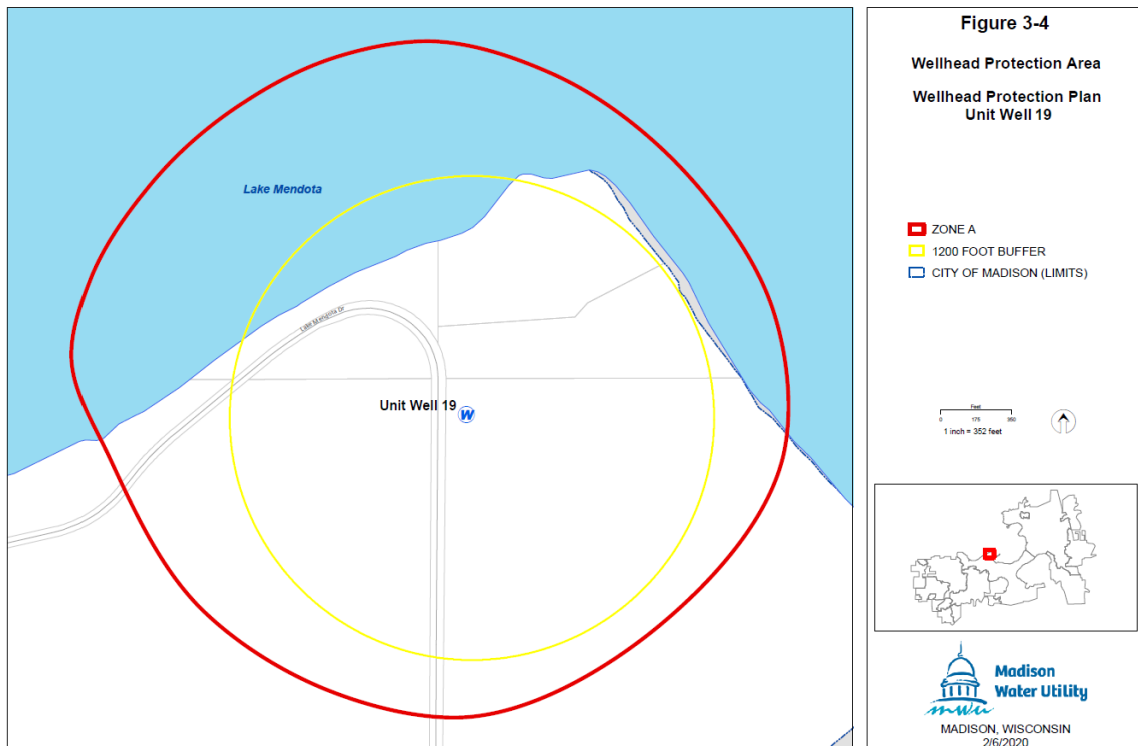
The location of Well No. 19 and the surrounding Zone A and Zone B are shown in Sec. 28.102(18)(a).

(a) Map of Wellhead Protection District No. 19.

**WELL NO. 19 - CURRENT**



**WELL NO. 19 - NEW**



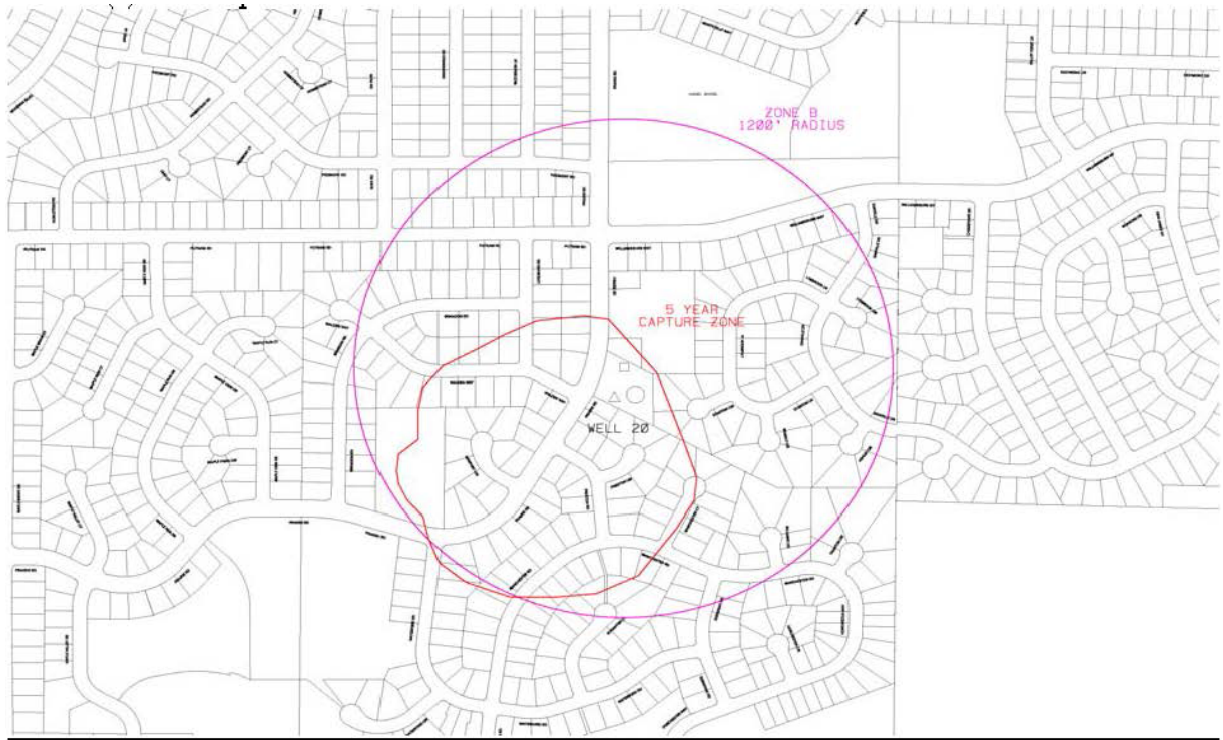
(Am. by ORD-21-00009, 2-10-21)

(19) Wellhead Protection District No. 20.

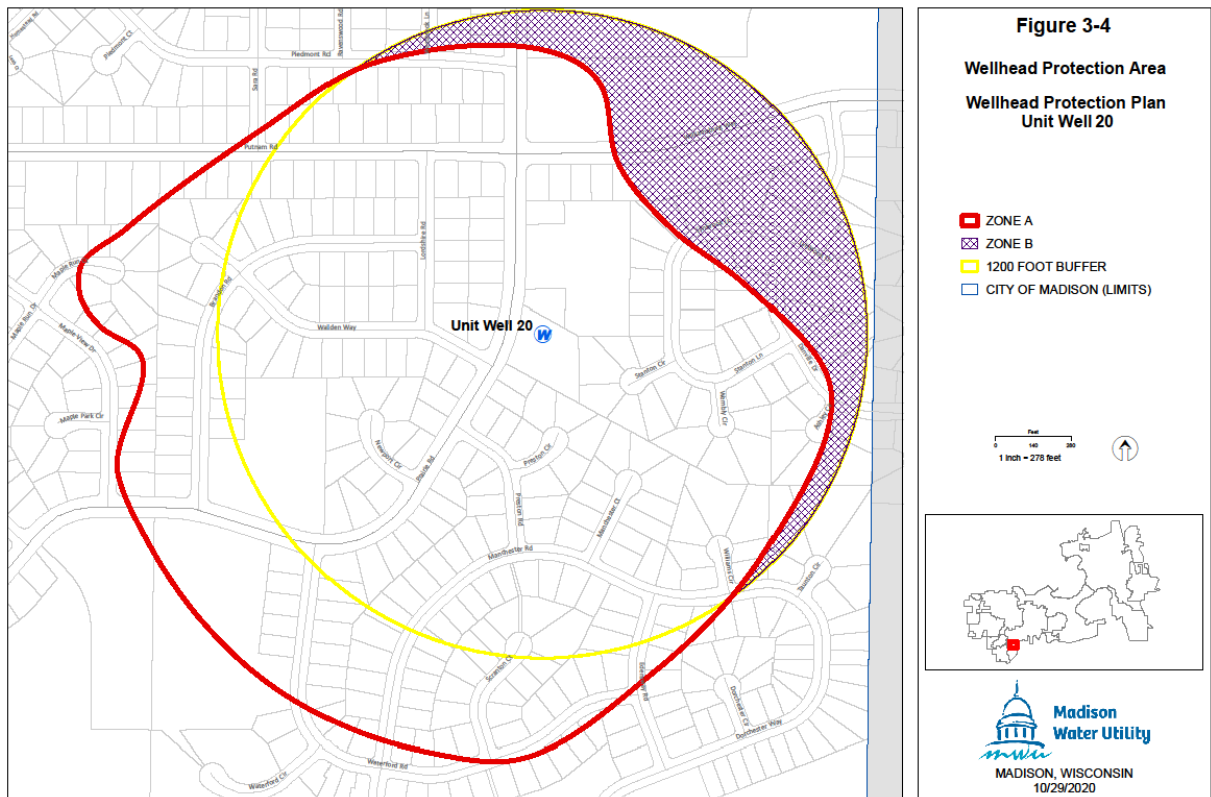
The location of Well No. 20 and the surrounding Zone A and Zone B are shown in Sec. 28.102(19)(a).

(a) Map of Wellhead Protection District No. 20.

**WELL NO. 20 - CURRENT**



**WELL NO. 20 - NEW**



(Am. by ORD-21-00009, 2-10-21)

(20) Reserved for Future Use. (Rpld. by ORD-21-00009, 2-10-21)

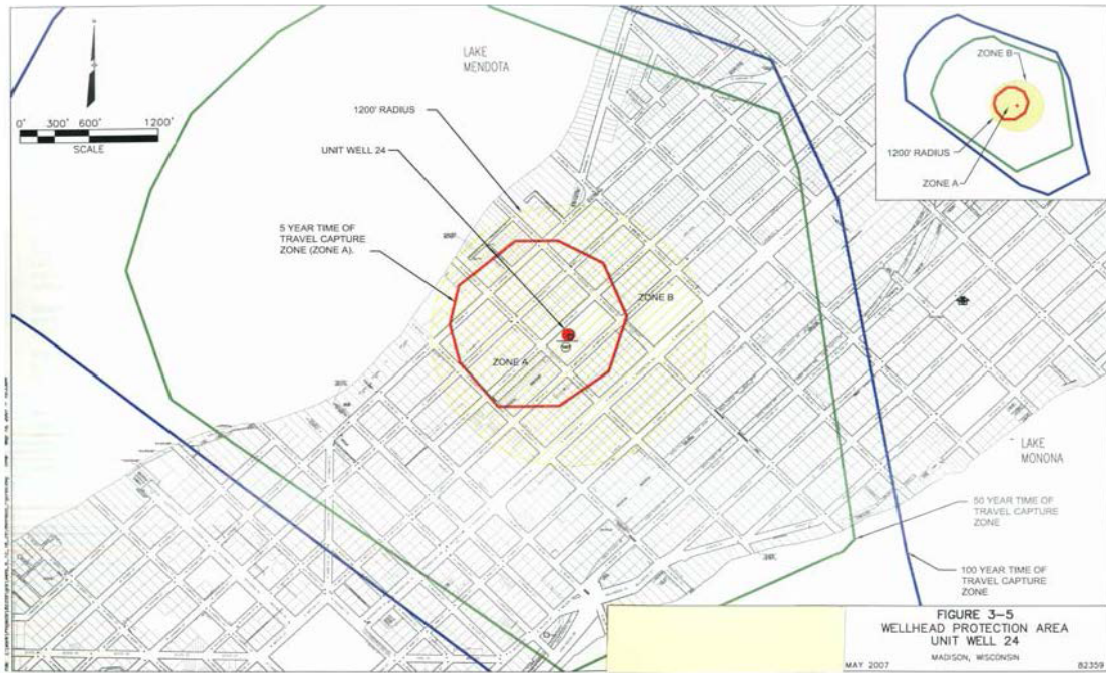
(21) Wellhead Protection District No. 24.

The location of Well No. 24 and the surrounding Zone A and Zone B are shown in Sec. 28.102(21)(a).

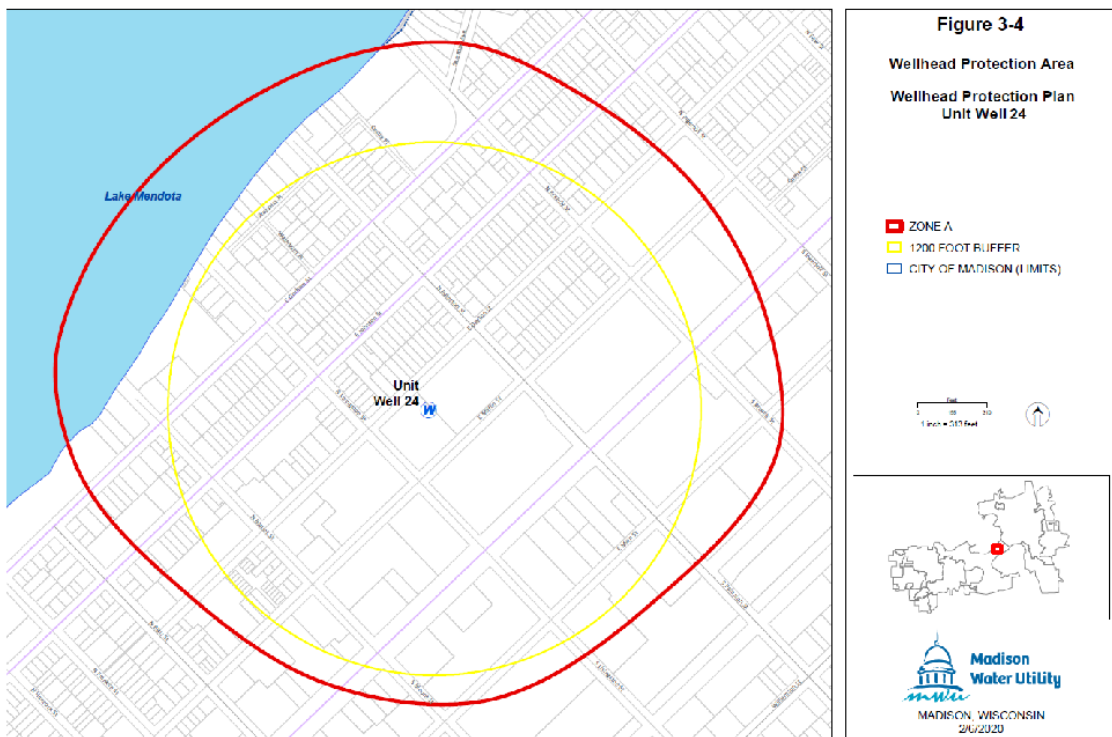
(a) Map of Wellhead Protection District No. 24.

**WELL NO. 24 - CURRENT**





**WELL NO. 24 - NEW**



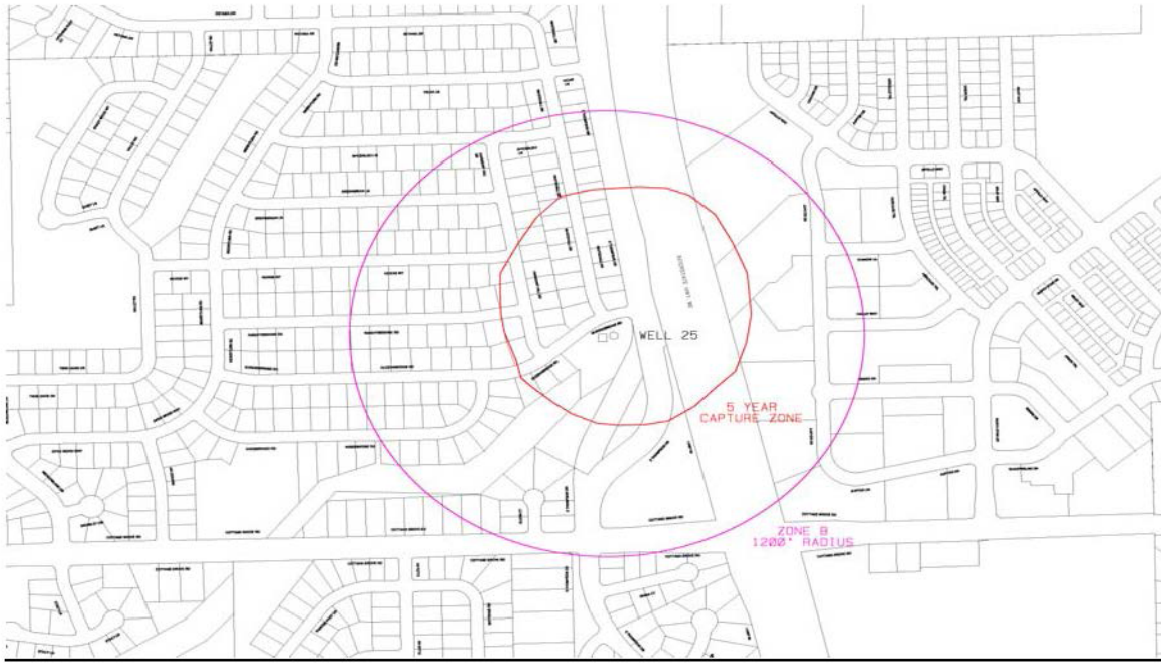
(Am. by ORD-21-00009, 2-10-21)

(22) Wellhead Protection District No. 25.

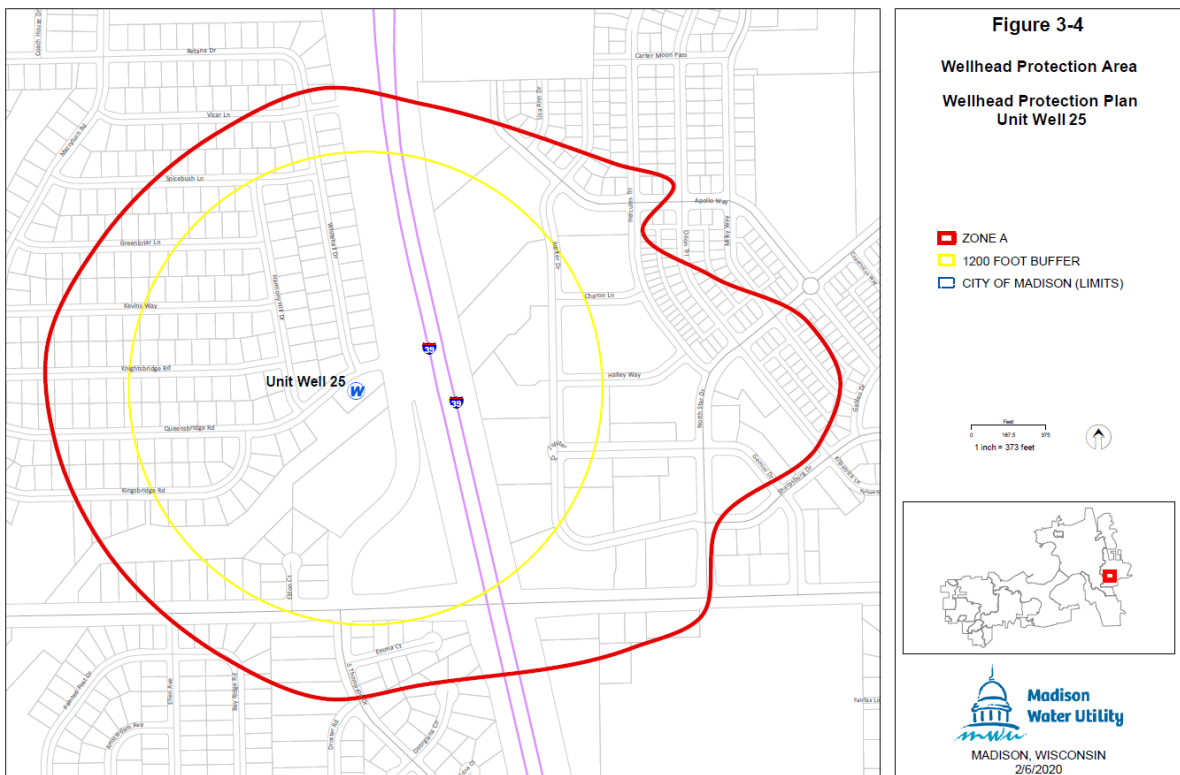
The location of Well No. 25 and the surrounding Zone A and Zone B are shown in Sec. 28.102(22)(a).

(a) Map of Wellhead Protection District No. 25.

**WELL NO. 25 - CURRENT**



**WELL NO. 25 - NEW**



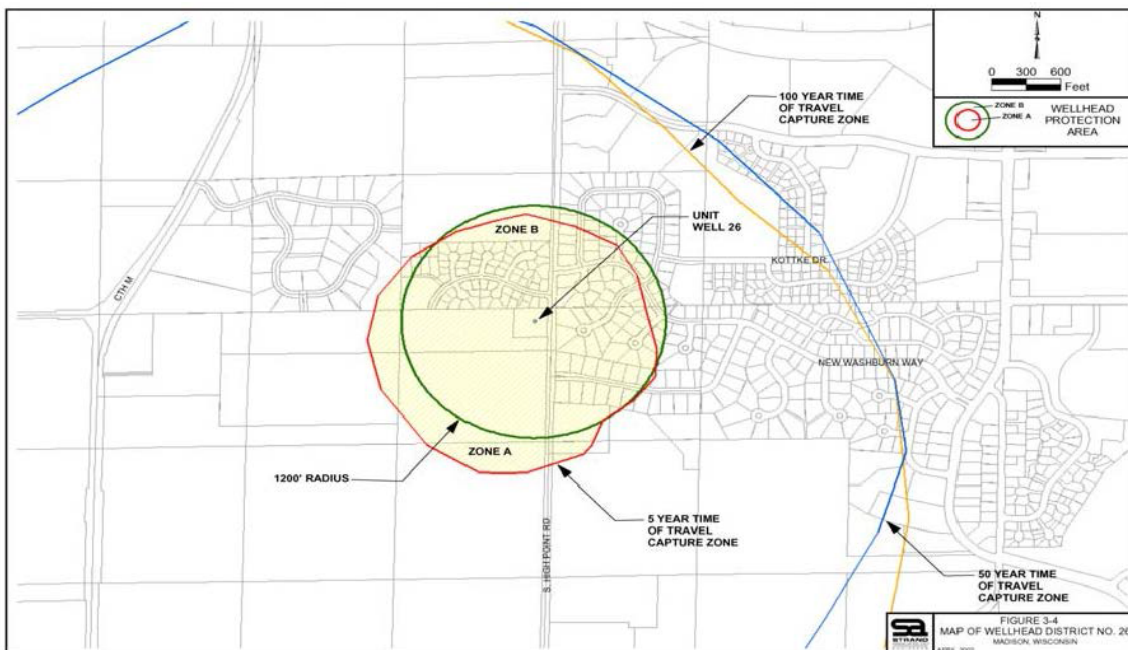
(Am. by ORD-21-00009, 2-10-21)

(23) Wellhead Protection District No. 26.

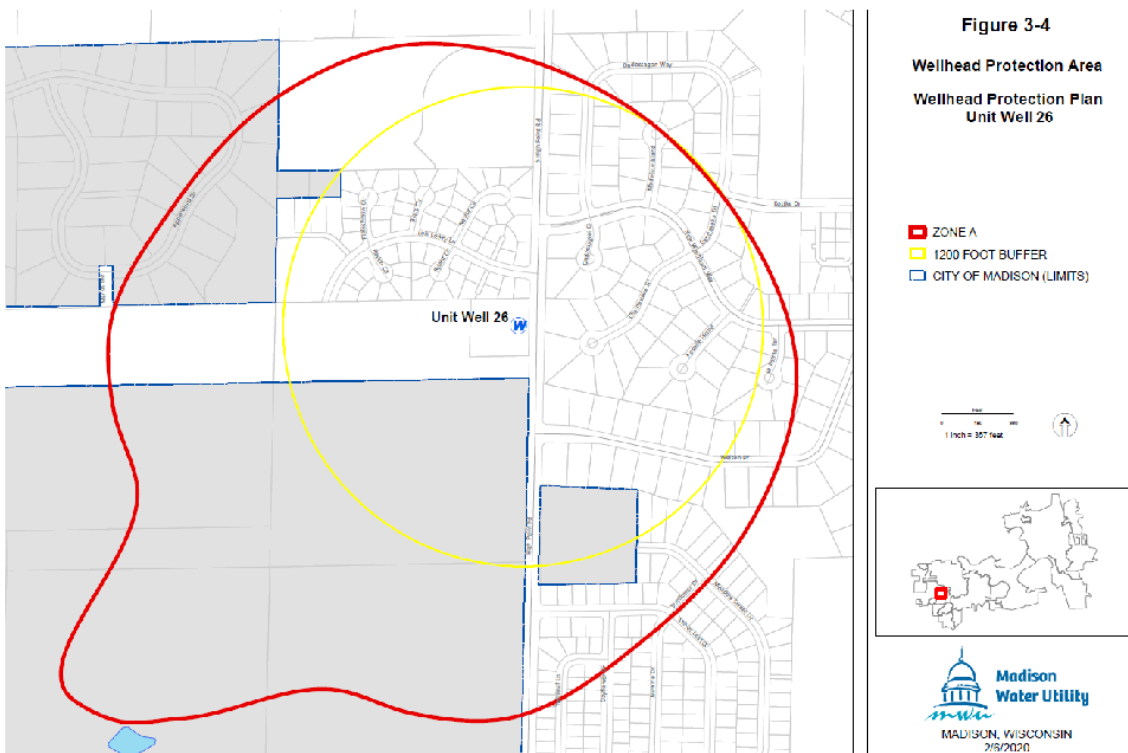
The location of Well No. 26 and the surrounding Zone A and Zone B are shown in Sec. 28.102(23)(a).

(a) Map of Wellhead District No. 26.

WELL NO. 26 - CURRENT



WELL NO. 26 - NEW



(Am. by ORD-21-00009, 2-10-21)

(24) Wellhead Protection District No. 27.

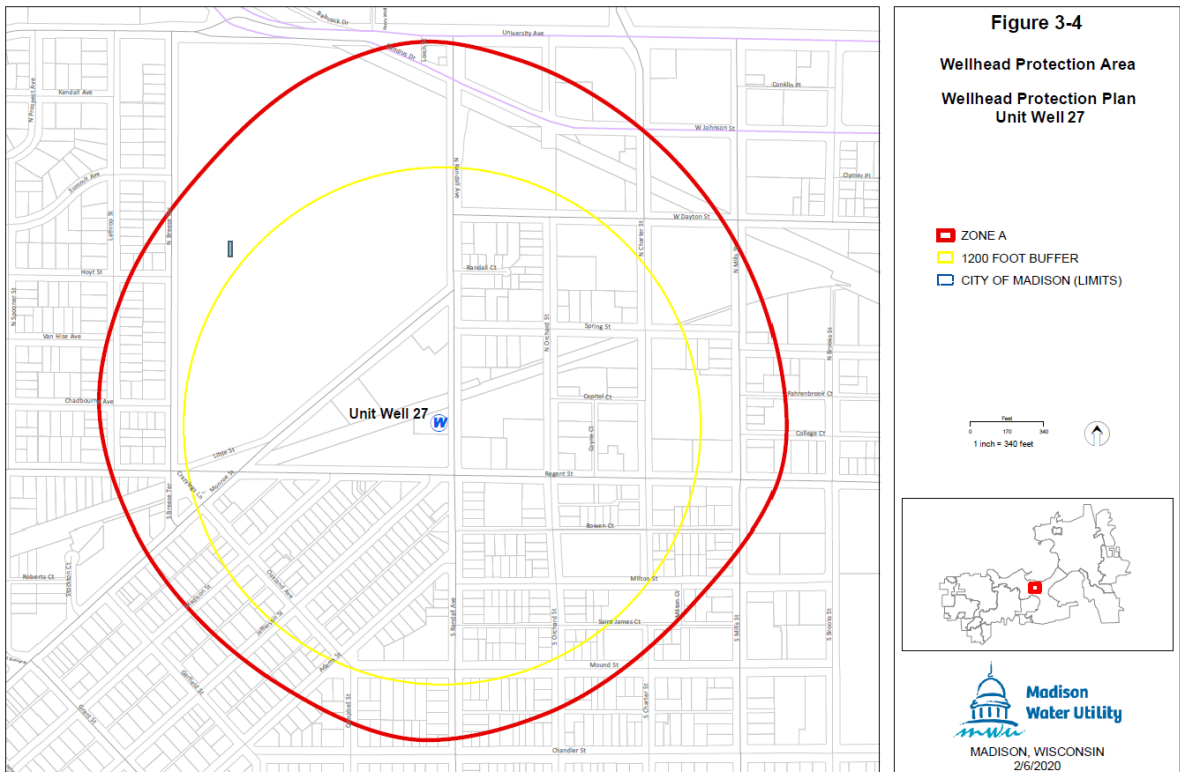
The location of Well No. 27 and the surrounding Zone A and Zone B are shown in Sec. 28.102(24)(a).

(a) Map of Wellhead Protection District No. 27.

WELL NO. 27 - CURRENT



WELL NO. 27 - NEW



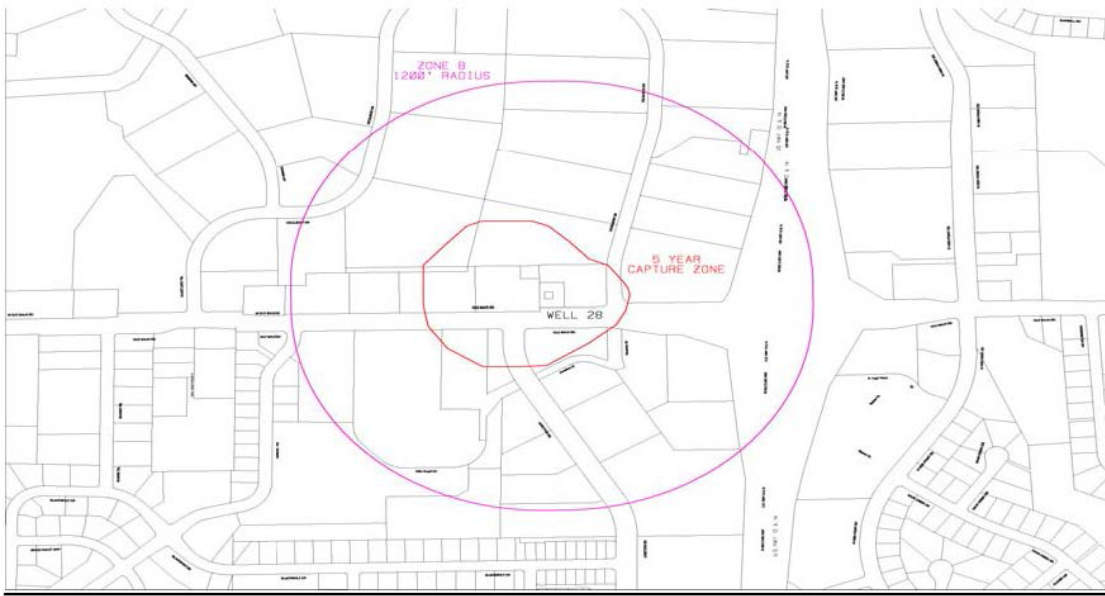
;hn2; (Am. by ORD-21-00009, 2-10-21)

(25) Wellhead Protection District No. 28.

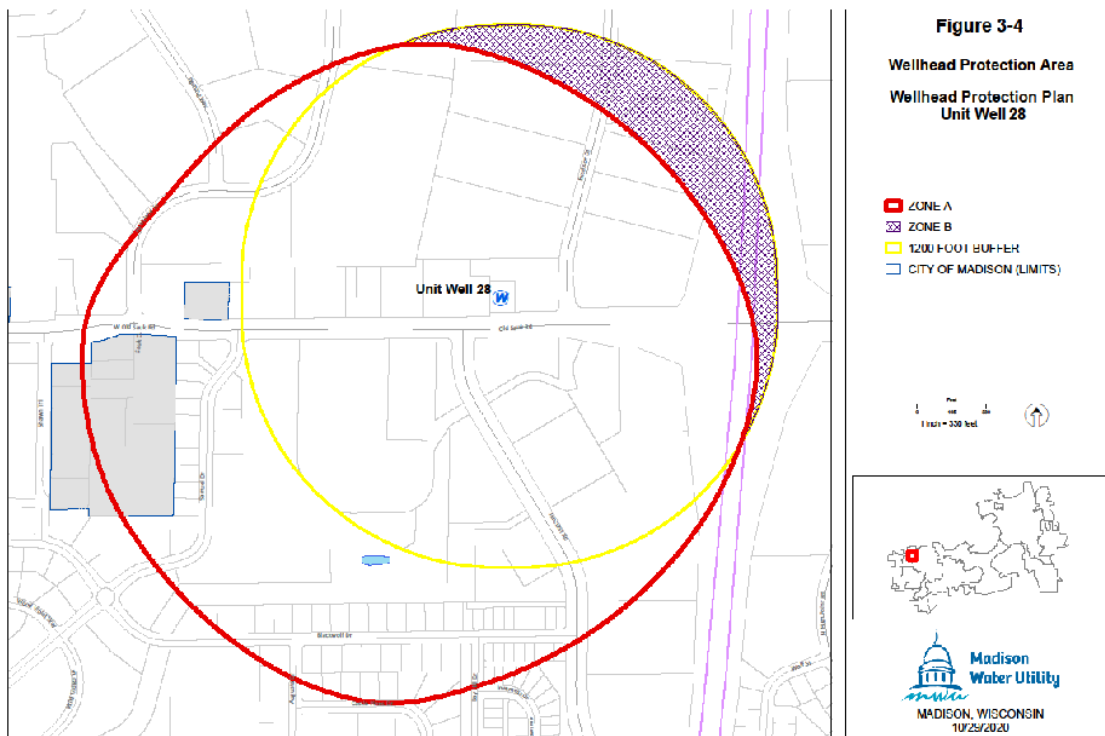
The location of Well No. 28 and the surrounding Zone A and Zone B are shown in Sec. 28.102(25)(a).

(a) Map of Wellhead Protection District No. 28.

**WELL NO. 28 - CURRENT**



**WELL NO. 28 - NEW**



;hn2;

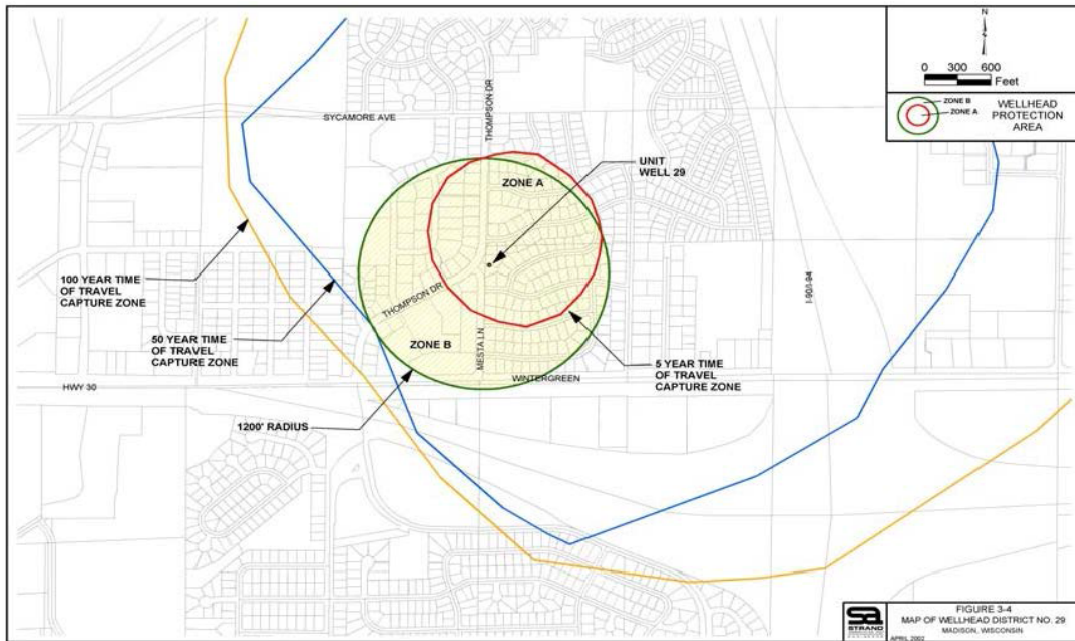
(Am. by ORD-21-00009, 2-10-21)

(26) Wellhead Protection District No. 29.

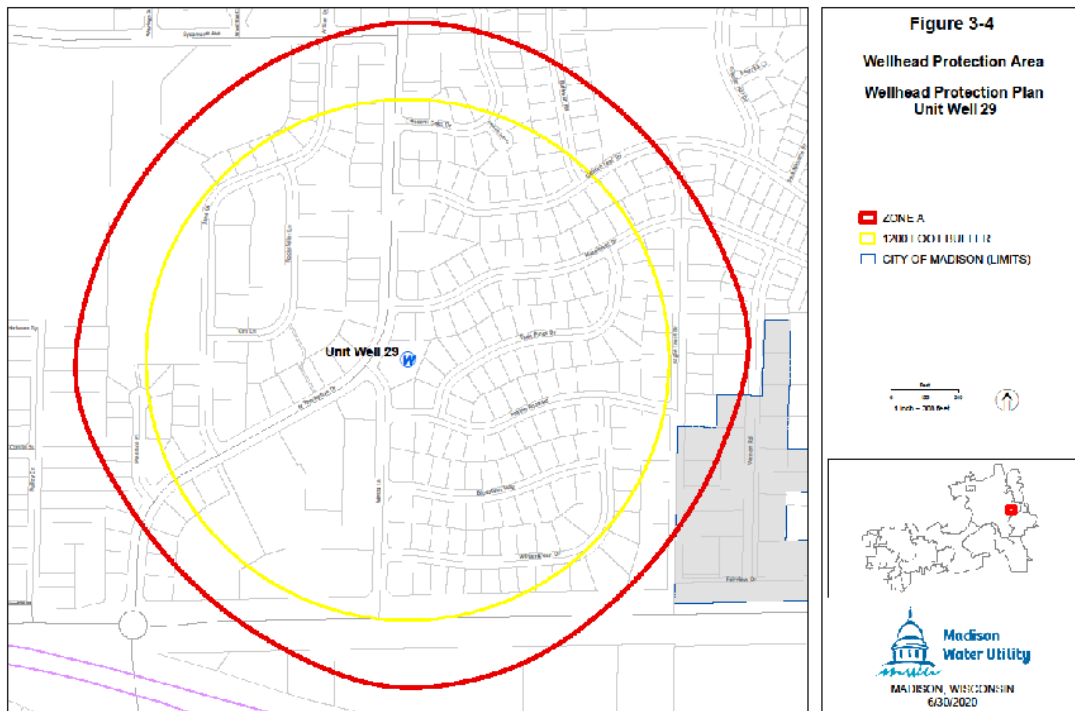
The location of Well No. 29 and the surrounding Zone A and Zone B are shown in Sec. 28.102(26)(a).

(a) Map of Wellhead Protection District No. 29.

WELL NO. 29 - CURRENT



WELL NO. 29 - NEW



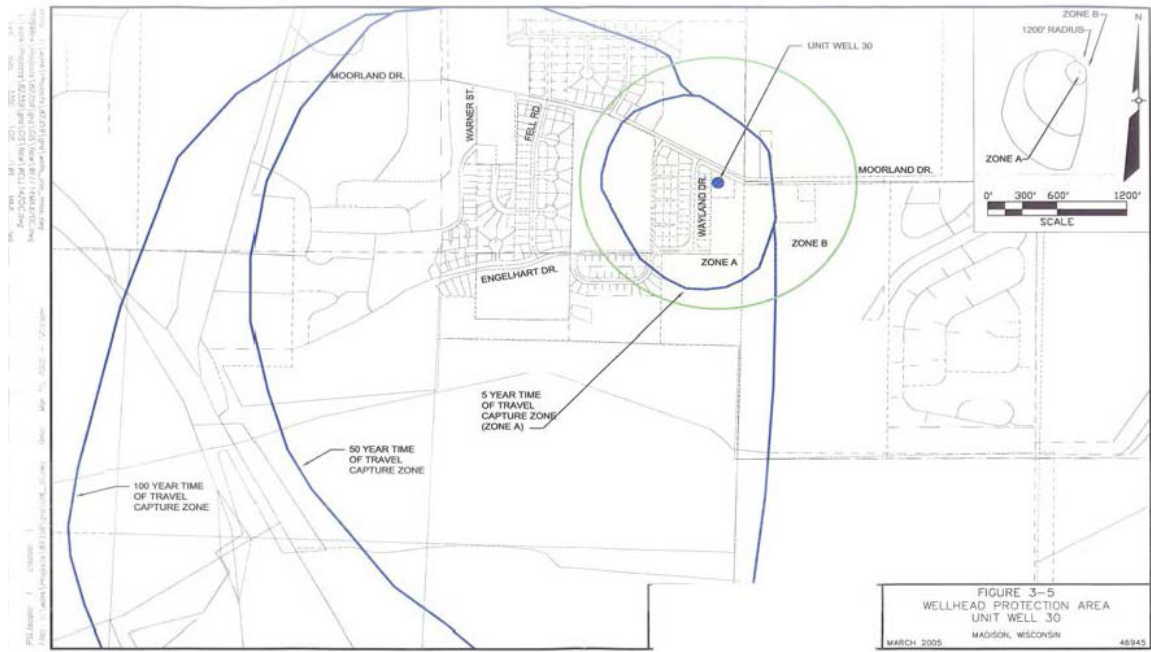
(Am. by ORD-21-00009, 2-10-21)

(27) Wellhead Protection District No. 30.

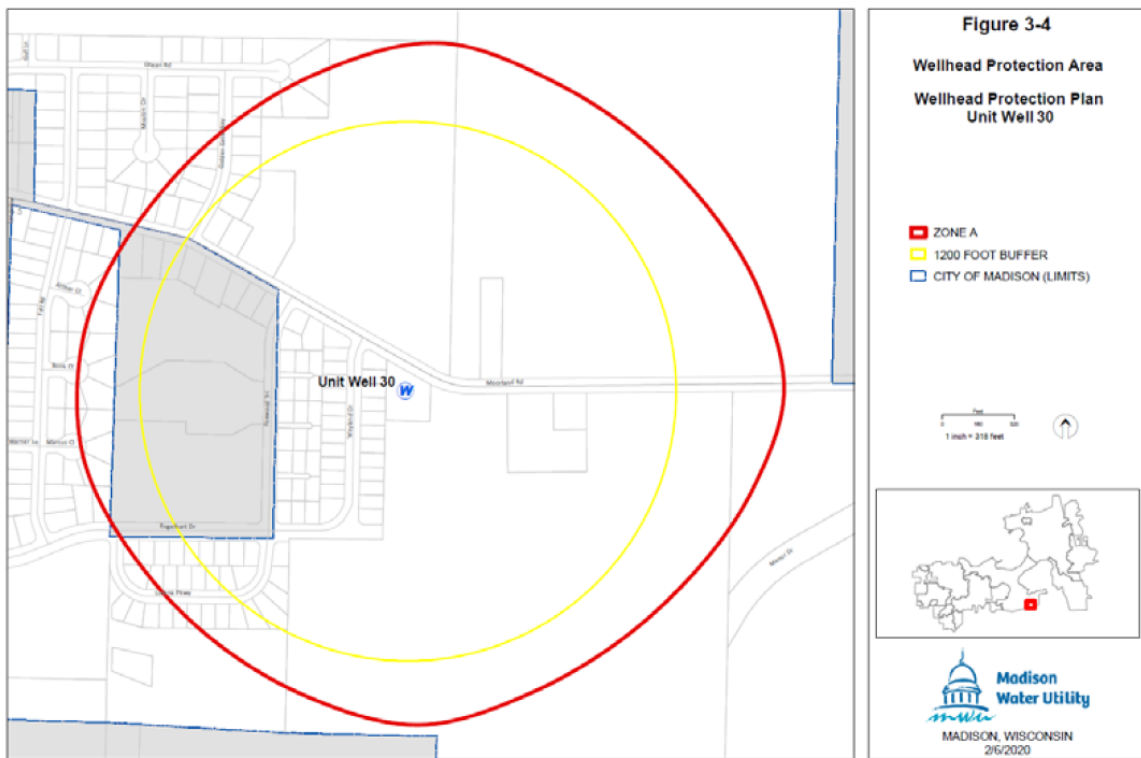
The location of Well No. 30 and the surrounding Zone A and Zone B are shown in Sec. 28.102(27)(a).

(a) Map of Wellhead Protection District No. 30.

WELL NO. 30 - CURRENT



**WELL NO. 30 - NEW**



(Am. by ORD-21-00009, 2-10-21)

(28) Wellhead Protection District No. 31.

The location of Well No. 31 and the surrounding Zone A and Zone B are shown in Sec. 28.102(28)(a).

(a) Map of Wellhead Protection District No. 31.

