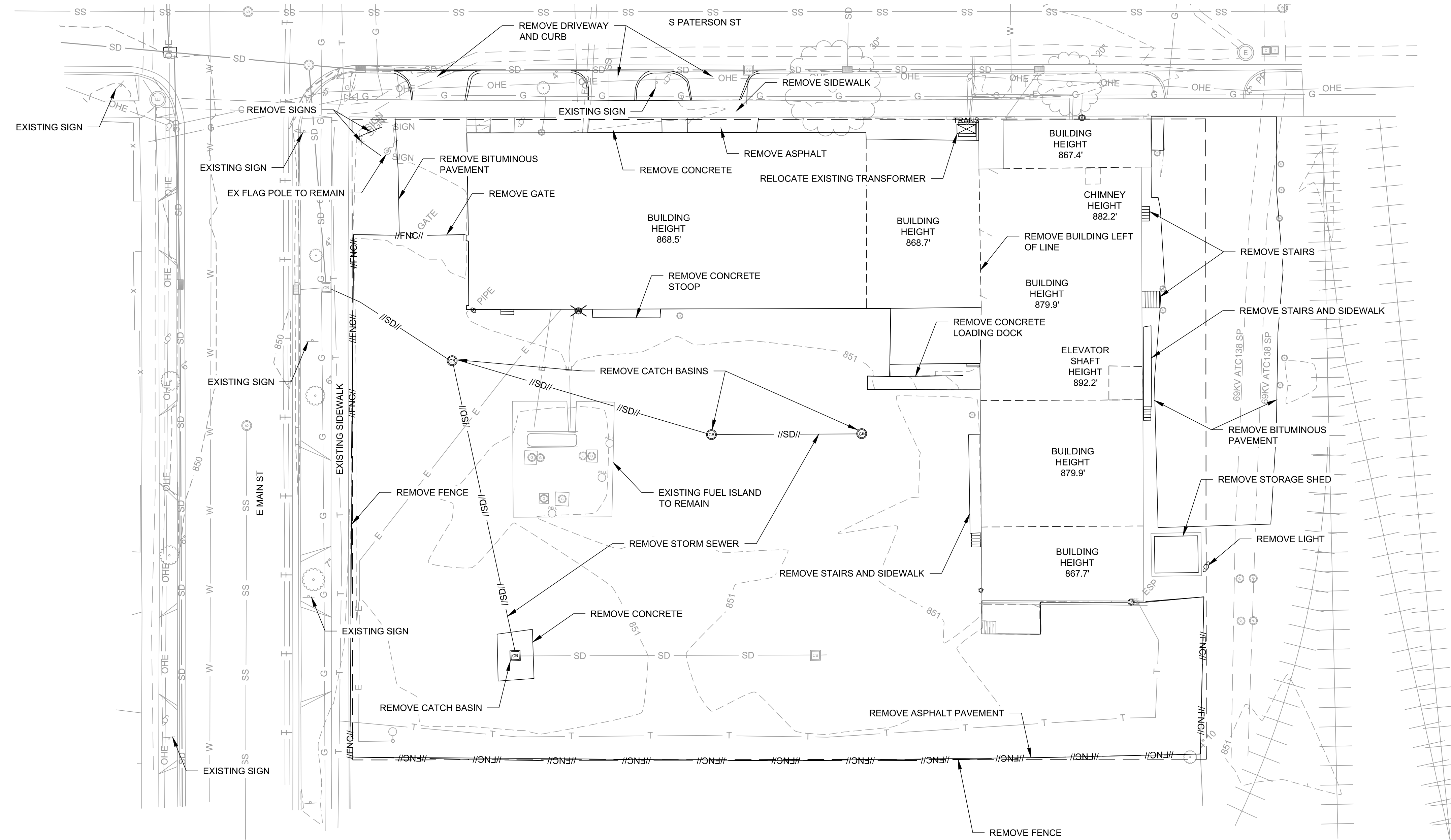


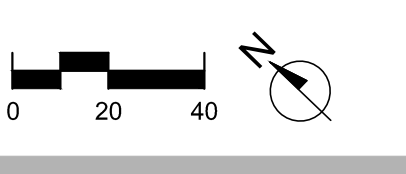
SITE DEMOLITION PLAN NOTES:

- LOT LINES ARE NOT MEASURED OR FIELD VERIFIED AND ARE SHOWN AS RECORDED ON THE ORIGINAL PLAT OF THE CITY OF MADISON. ALL TOPOGRAPHIC DATA IS REFERENCED TO WISCONSIN COUNTY COORDINATE SYSTEM.



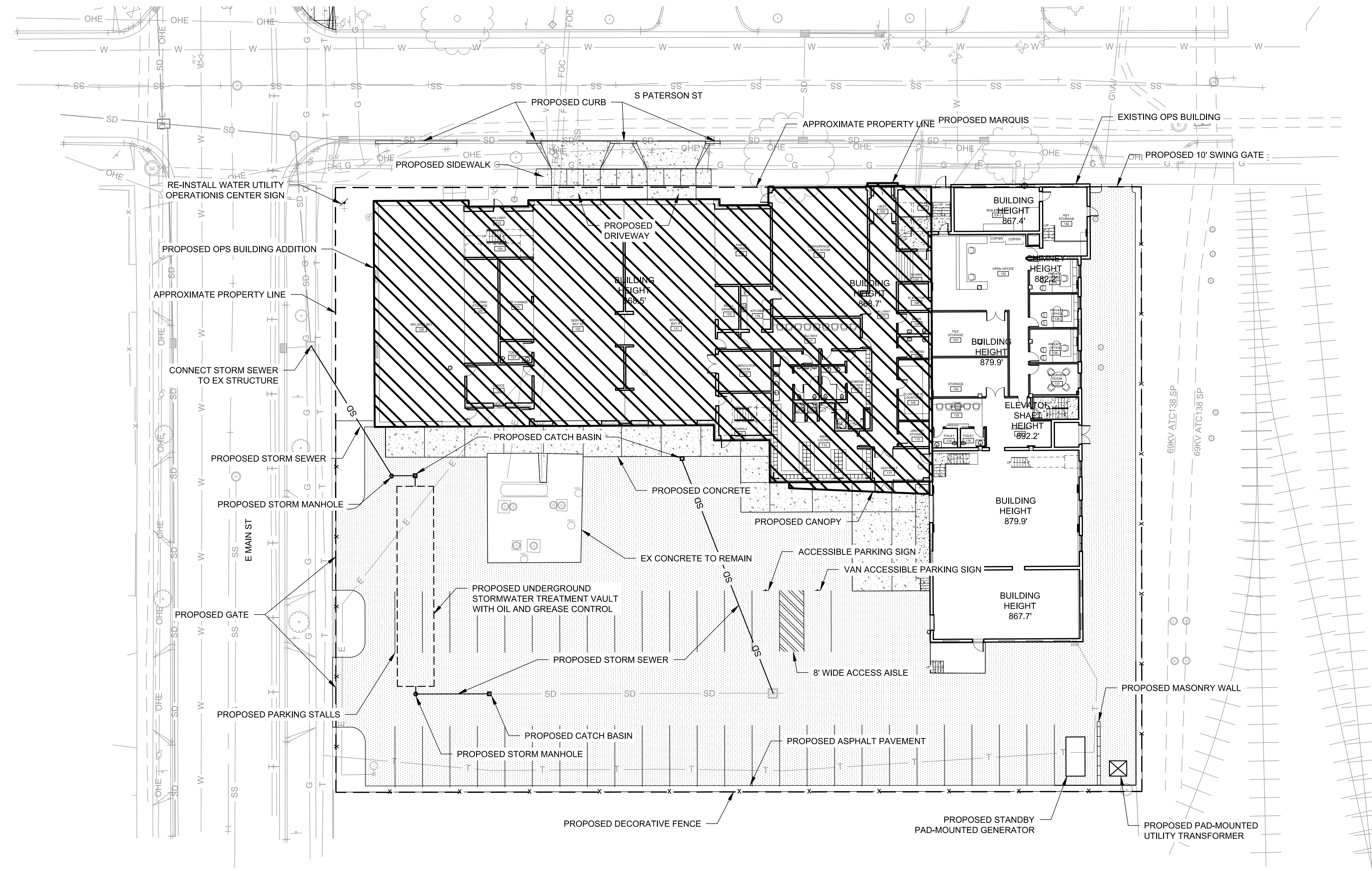
LEGEND:

- WA/--- ABANDON
- CON/--- ABANDON CONDUIT
- EWA/--- ABANDON ELECTRIC, UNDERGROUND
- GWA/--- ABANDON GAS, UNDERGROUND
- SS/--- ABANDON SANITARY SEWER
- SD/--- ABANDON STORM SEWER
- TVA/--- ABANDON TELEPHONE
- W/--- ABANDON WATER
- X--- REMOVE
- [Cross-hatch pattern]--- REMOVE
- [Diagonal line pattern]--- REMOVE CONDUIT
- [Dashed line]--- REMOVE ELECTRIC, UNDERGROUND
- [Dotted line]--- REMOVE ELECTRIC, OVERHEAD
- [Dashed line with dots]--- REMOVE FENCE
- [Dashed line with dots]--- REMOVE FIBER OPTIC CABLE
- [Dashed line with dots]--- REMOVE GAS LINE
- [Dashed line with dots]--- REMOVE SANITARY SEWER
- [Dashed line with dots]--- REMOVE STORM SEWER
- [Dashed line with dots]--- REMOVE TELEPHONE
- [Dashed line with dots]--- REMOVE WATER LINE
- [Dashed line with dots]--- SAW CUT PAVEMENT
- [Cross-hatch pattern]--- ASPHALT REMOVAL
- [Cross-hatch pattern]--- CONCRETE REMOVAL
- [Cross-hatch pattern]--- REMOVAL PATTERN



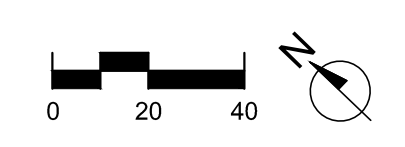
**SITE IMPROVEMENTS PLAN NOTES:**

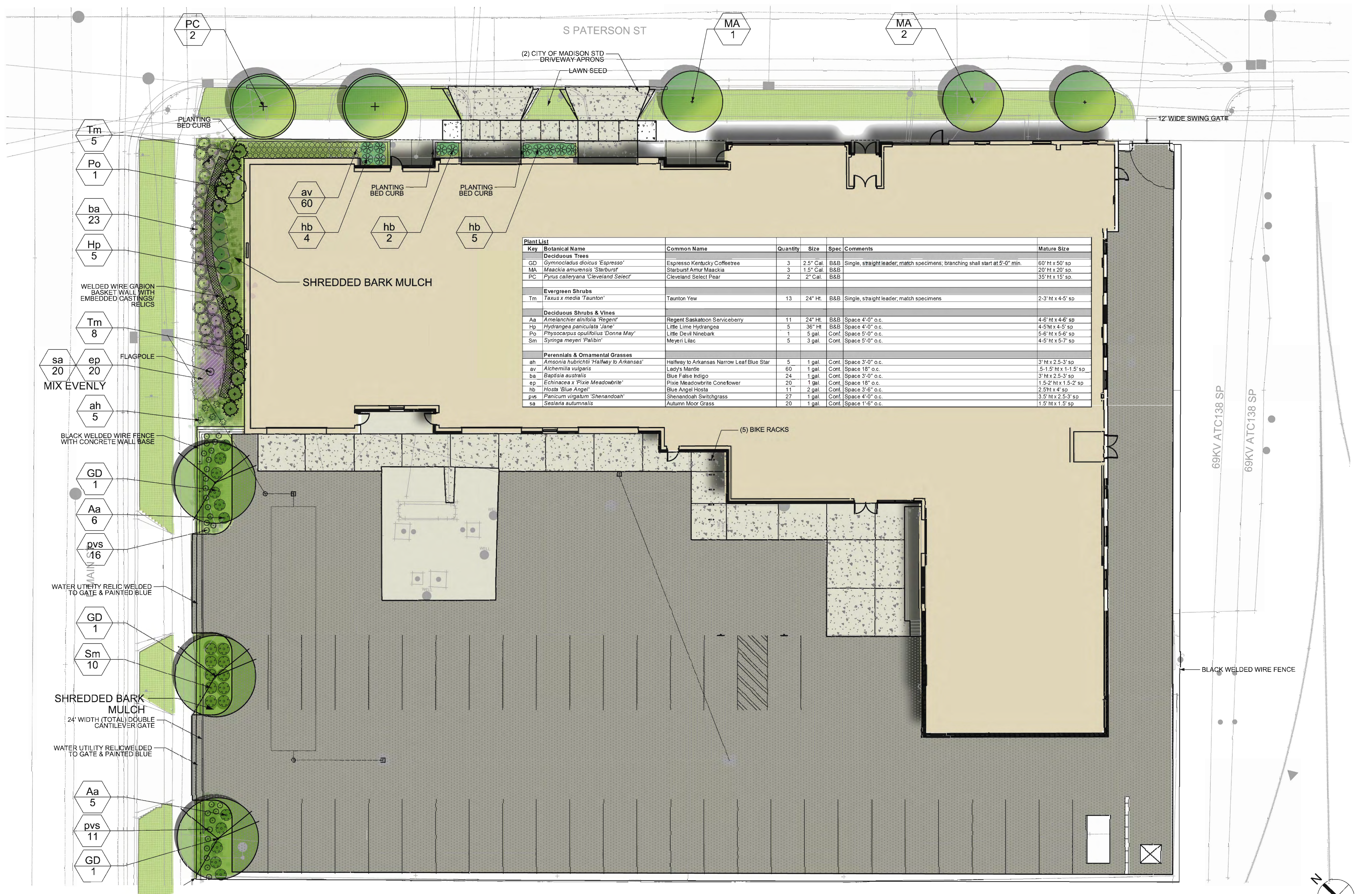
1. LOT LINES ARE NOT MEASURED OR FIELD VERIFIED AND ARE SHOWN AS RECORDED ON THE ORIGINAL PLAT OF THE CITY OF MADISON. ALL TOPOGRAPHIC DATA IS REFERENCED TO WISCONSIN COUNTY COORDINATE SYSTEM.
2. 40 TOTAL PARKING STALLS.
3. 2 ADA PARKING STALLS.



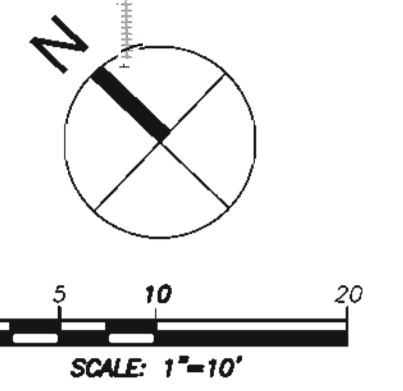
**LEGEND:**

- SIGN (SINGLE POST)
- STORM INLET, CURB
- STORM INLET, ROUND
- STORM INLET, SQUARE
- STORM SEWER MANHOLE
- TRAFFIC FLOW DIRECTION
- BOUNDARY (PROJECT /CONSTRUCTION LIMITS)
- CONDUIT, GENERIC
- GAS
- OHE ELECTRIC, OVERHEAD
- E ELECTRIC, UNDERGROUND
- EXISTING CONTOUR LINES
- PROPOSED CONTOUR LINES
- FENCE
- GRADING LIMITS
- GUARDRAIL
- HANDRAIL
- PROPERTY LINE
- SS SANITARY SEWER
- S SIGNAL CABLE, UNDERGROUND
- SILT FENCE
- SEDIMENT LOG
- STONE RETAINING WALL
- SD STORM SEWER / CULVERT
- T TELEPHONE, UNDERGROUND
- TV TV CABLE
- W WATER
- ASPHALT
- CONCRETE
- STABILIZED CONSTRUCTION ENTRANCE
- EROSION MAT





Key	Botanical Name	Common Name	Quantity	Size	Spec	Comments	Mature Size
<b>Deciduous Trees</b>							
GD	<i>Symlocos diocous</i> 'Espresso'	Espresso Kentucky Coffeetree	3	2.5" Cal	B&B	Single, straight leader, match specimens; branching shall start at 5'-0" min.	60' ht x 50' sp
MA	<i>Maackia amurensis</i> 'Starburst'	Starburst Amur Maackia	3	1.5" Cal	B&B		20' ht x 20' sp
PC	<i>Pyrus calleryana</i> 'Cleveland Select'	Cleveland Select Pear	2	2" Cal	B&B		35' ht x 15' sp
<b>Evergreen Shrubs</b>							
Tm	<i>Taxus x media</i> 'Taunton'	Taunton Yew	13	24" Ht.	B&B	Single, straight leader, match specimens	2-3' ht x 4-5' sp
<b>Deciduous Shrubs &amp; Vines</b>							
Aa	<i>Amelanchier alnifolia</i> 'Regent'	Regent Saskatoon Serviceberry	11	24" Ht.	B&B	Space 4'-0" o.c.	4-6' ht x 4-6' sp
Hp	<i>Hydrangea paniculata</i> 'Jane'	Little Lime Hydrangea	5	36" Ht.	B&B	Space 4'-0" o.c.	4-5' ht x 4-5' sp
Po	<i>Physocarpus opulifolius</i> 'Donna May'	Little Devil Ninebark	1	5 gal.	Cont.	Space 5'-0" o.c.	5-6' ht x 5-6' sp
Sm	<i>Syringa meyeri</i> 'Palibin'	Meyer Lilac	5	3 gal.	Cont.	Space 5'-0" o.c.	4-5' ht x 5-7' sp
<b>Perennials &amp; Ornamental Grasses</b>							
ah	<i>Amsonia hubrichtii</i> 'Halfway to Arkansas'	Halfway to Arkansas Narrow Leaf Blue Star	5	1 gal.	Cont.	Space 3'-0" o.c.	3' ht x 2.5-3' sp
av	<i>Alchemilla vulgaris</i>	Lady's Mantle	60	1 gal.	Cont.	Space 18" o.c.	5-1.5' ht x 1-1.5' sp
ba	<i>Baptisia australis</i>	Blue False Indigo	24	1 gal.	Cont.	Space 3'-0" o.c.	3' ht x 2.5-3' sp
ep	<i>Echinacea x 'Pixie Meadowbrite'</i>	Pixie Meadowbrite Coneflower	20	1 gal.	Cont.	Space 18" o.c.	1.5-2' ht x 1.5-2' sp
hb	<i>Hosta 'Blue Angel'</i>	Blue Angel Hosta	11	2 gal.	Cont.	Space 3'-6" o.c.	2.5' ht x 4' sp
pvs	<i>Panicum virgatum</i> 'Shenandoah'	Shenandoah Switchgrass	27	1 gal.	Cont.	Space 4'-0" o.c.	3.5' ht x 2.5-3' sp
sa	<i>Sesleria autumnalis</i>	Autumn Moor Grass	20	1 gal.	Cont.	Space 1'-6" o.c.	1.5' ht x 1.5' sp

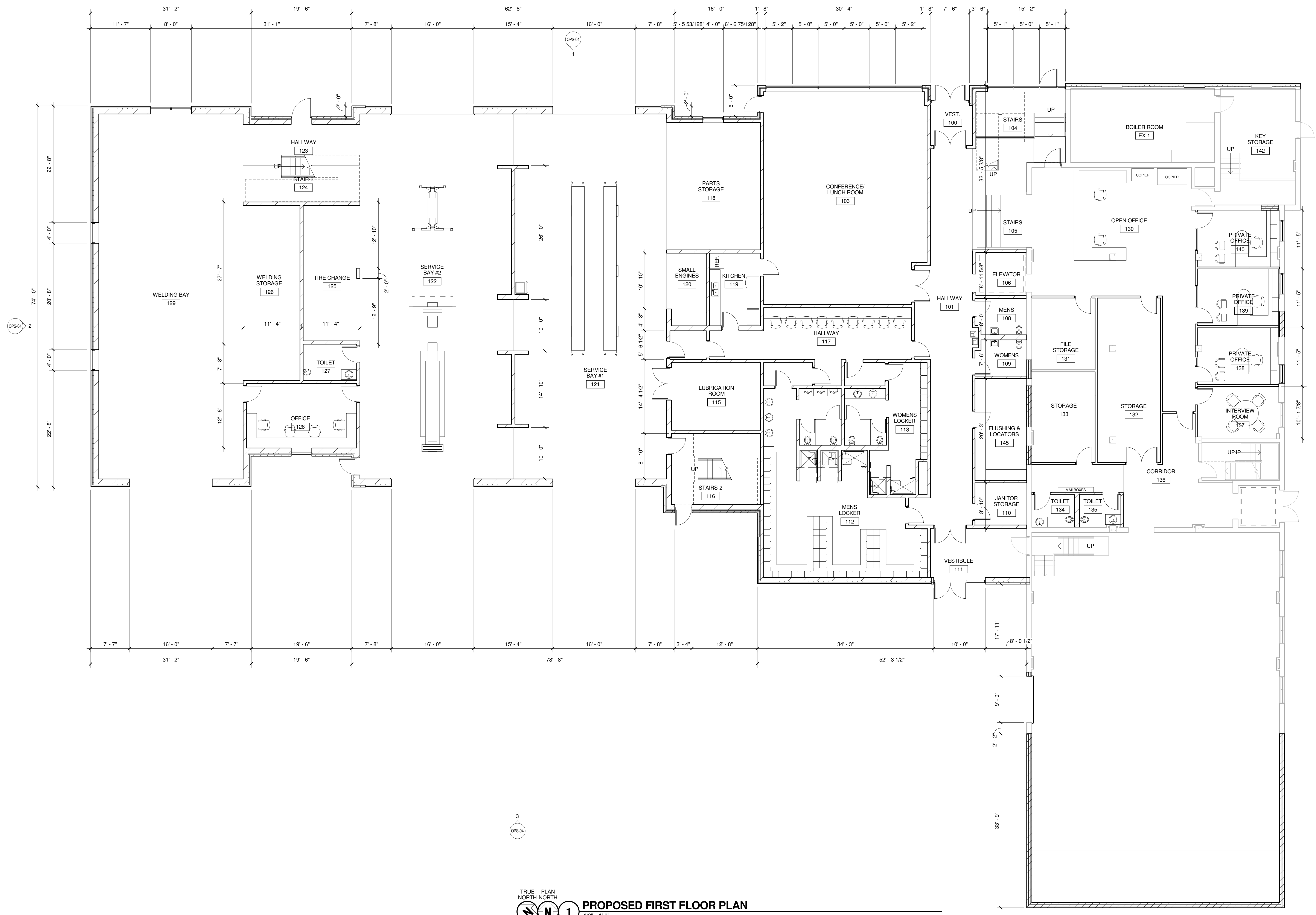


MADISON WATER UTILITY  
Paterson Street Operations Center and Vehical and Material Storage

01/20/15



TRUE PLAN  
 NORTH NORTH  
 1 PROPOSED SECOND FLOOR PLAN  
 1/8" = 1'-0"



3  
OPS-04

TRUE PLAN  
NORTH NORTH

**1** PROPOSED FIRST FLOOR PLAN  
1/8" = 1'-0"