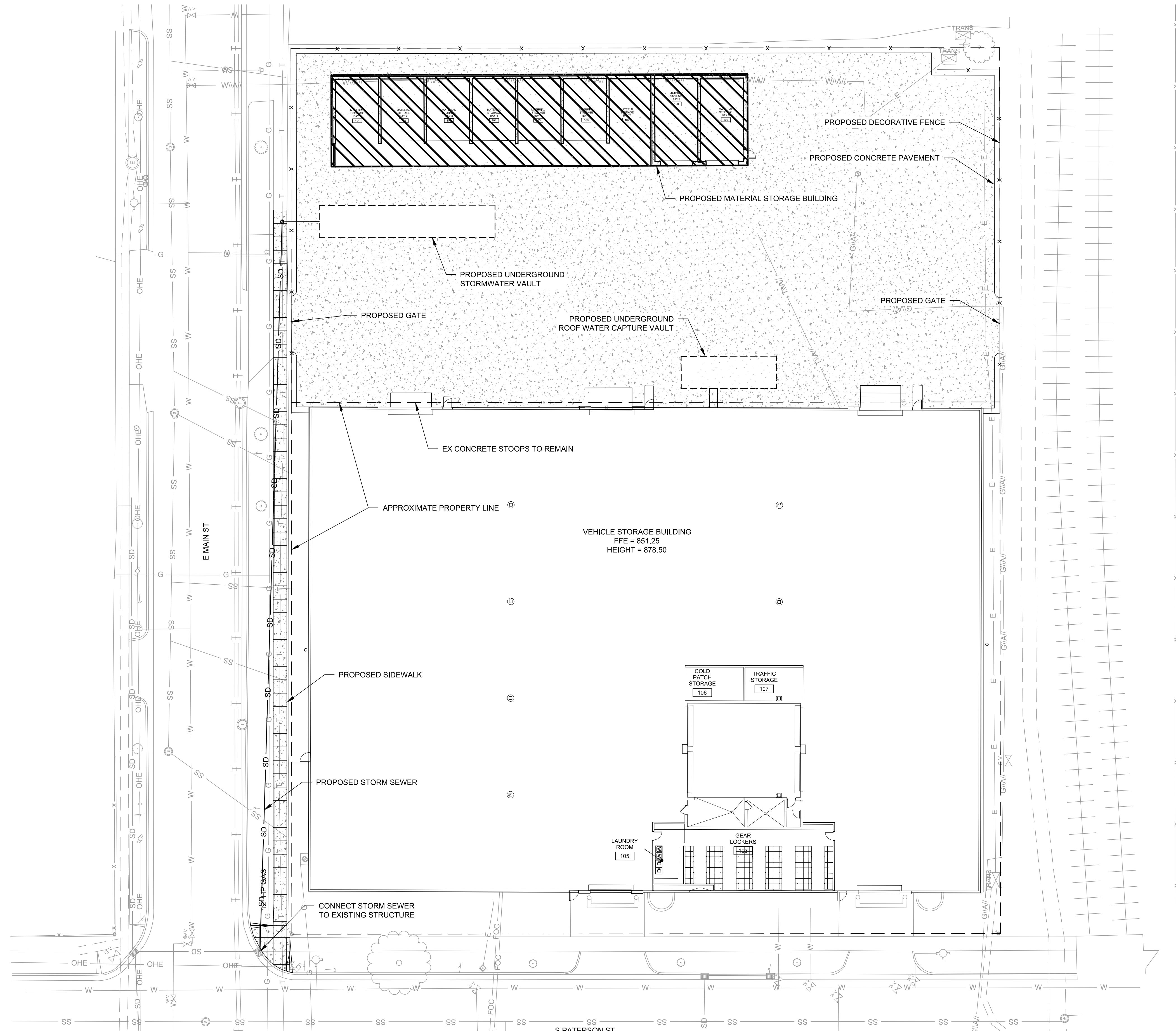


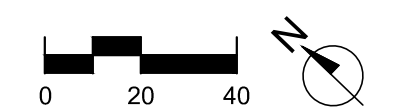
SITE IMPROVEMENTS PLAN NOTES:

1. LOT LINES ARE NOT MEASURED OR FIELD VERIFIED AND ARE SHOWN AS RECORDED ON THE ORIGINAL PLAT OF THE CITY OF MADISON. ALL TOPOGRAPHIC DATA IS REFERENCED TO WISCONSIN COUNTY COORDINATE SYSTEM.



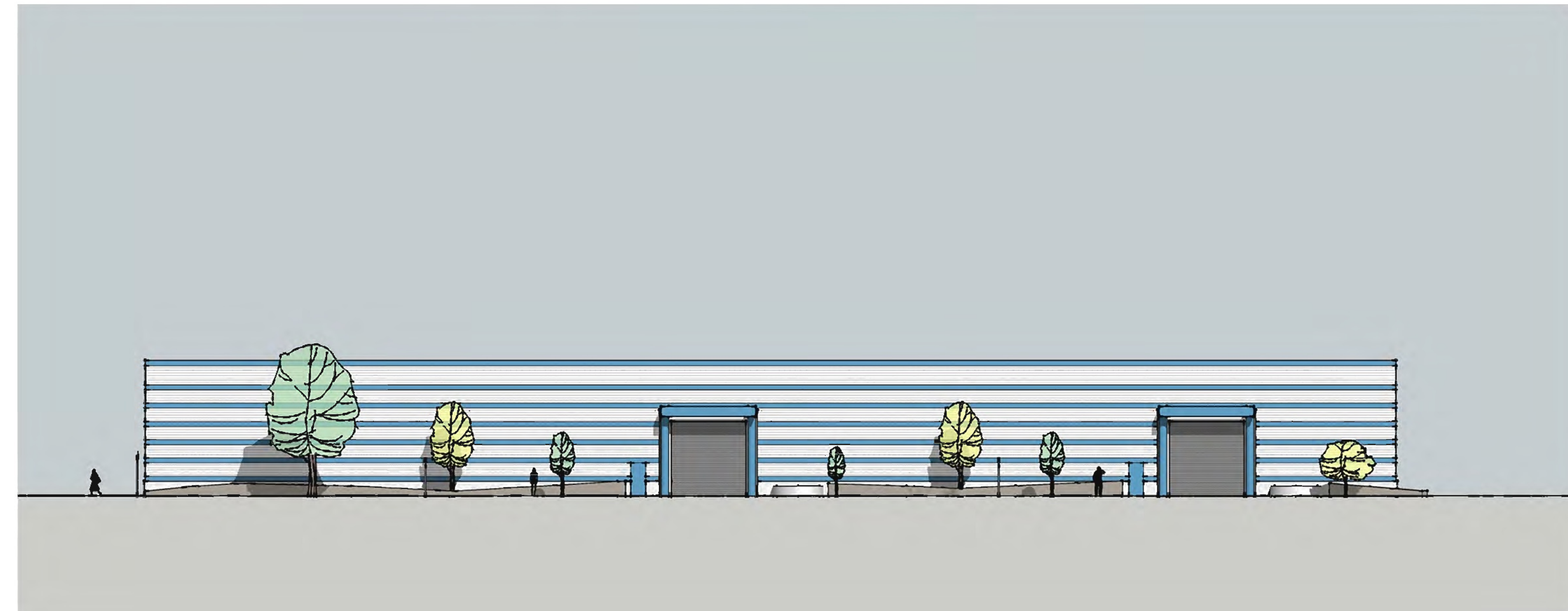
LEGEND:

- SIGN (SINGLE POST)
- ▣ STORM INLET, CURB
- ⊙ STORM INLET, ROUND
- ⊠ STORM INLET, SQUARE
- ⊙ STORM SEWER MANHOLE
- ↑ TRAFFIC FLOW DIRECTION
- BOUNDARY (PROJECT / CONSTRUCTION LIMITS)
- CON CONDUIT, GENERIC
- G GAS
- OHE ELECTRIC, OVERHEAD
- E ELECTRIC, UNDERGROUND
- (xxx)(xxx)--- EXISTING CONTOUR LINES
- (xxx)(xxx)--- PROPOSED CONTOUR LINES
- x FENCE
- GRADING LIMITS
- GUARDRAIL
- o HANDRAIL
- PROPERTY LINE
- SS SANITARY SEWER
- S SIGNAL CABLE, UNDERGROUND
- SILT FENCE
- SSSSSSSSSSSSSSSS SEDIMENT LOG
- o-o-o-o-o STONE RETAINING WALL
- SD STORM SEWER / CULVERT
- T TELEPHONE, UNDERGROUND
- TV TV CABLE
- W WATER
- ASPHALT
- CONCRETE
- STABILIZED CONSTRUCTION ENTRANCE
- EROSION MAT





Key	Botanical Name	Common Name	Quantity	Size	Spec	Comments	Mature Size
Deciduous Trees							
AG	<i>Amelanchier x grandiflora</i> 'Robin Hill'	Robin Hill Serviceberry	3	7' Ht	B&B		20-25' ht x 10'-15' sp
Evergreen Shrubs							
To	<i>Thuja occidentalis</i> 'Hetz Wintergreen'	Hetz Wintergreen Arborvitae	5	6' Ht	B&B		20-30' ht x 5'-10' sp
Deciduous Shrubs & Vines							
Am	<i>Aronia melanocarpa</i> var. <i>elata</i>	Glossy Black Chokeberry	9	5 gal.	Cont.	Space 4'-0" o.c.	4-6' ht x 4-6' sp
Perennials & Ornamental Grasses							
ah	<i>Amsonia hubrichtii</i> 'Halfway to Arkansas'	Halfway to Arkansas Narrow Leaf Blue Star	32	1 gal.	Cont.	Space 3'-0" o.c.	3' ht x 2.5-3' sp
ba	<i>Baptisia australis</i>	Blue False Indigo	18	1 gal.	Cont.	Space 3'-0" o.c.	3' ht x 2.5-3' sp
ca	<i>Calamagrostis x acutiflora</i> 'Karl Foerster'	Karl Foerster Feather Reed Grass	27	3 gal.	Cont.	Space 24" o.c.	4-6' ht x 2-3' sp
cn	<i>Calamintha nepeta</i> ssp. <i>nepeta</i>	Lesser Calamintha	24	1 gal.	Cont.	Space 24" o.c.	1.5-2' ht x 1.5-2' sp
ep	<i>Echinacea x 'Pixie Meadowrite'</i>	Pixie Meadowrite Coneflower	48	1 gal.	Cont.	Space 18" o.c.	1.5-2' ht x 1.5-2' sp
pa	<i>Perovskia atriplicifolia</i> 'Little Spire'	Little Spire Russian Sage	12	1 gal.	Cont.	Space 32" o.c.	1.5-2' ht x 1.5-2' sp



PATERSON STREET ELEVATION



PATERSON STREET PERSPECTIVE