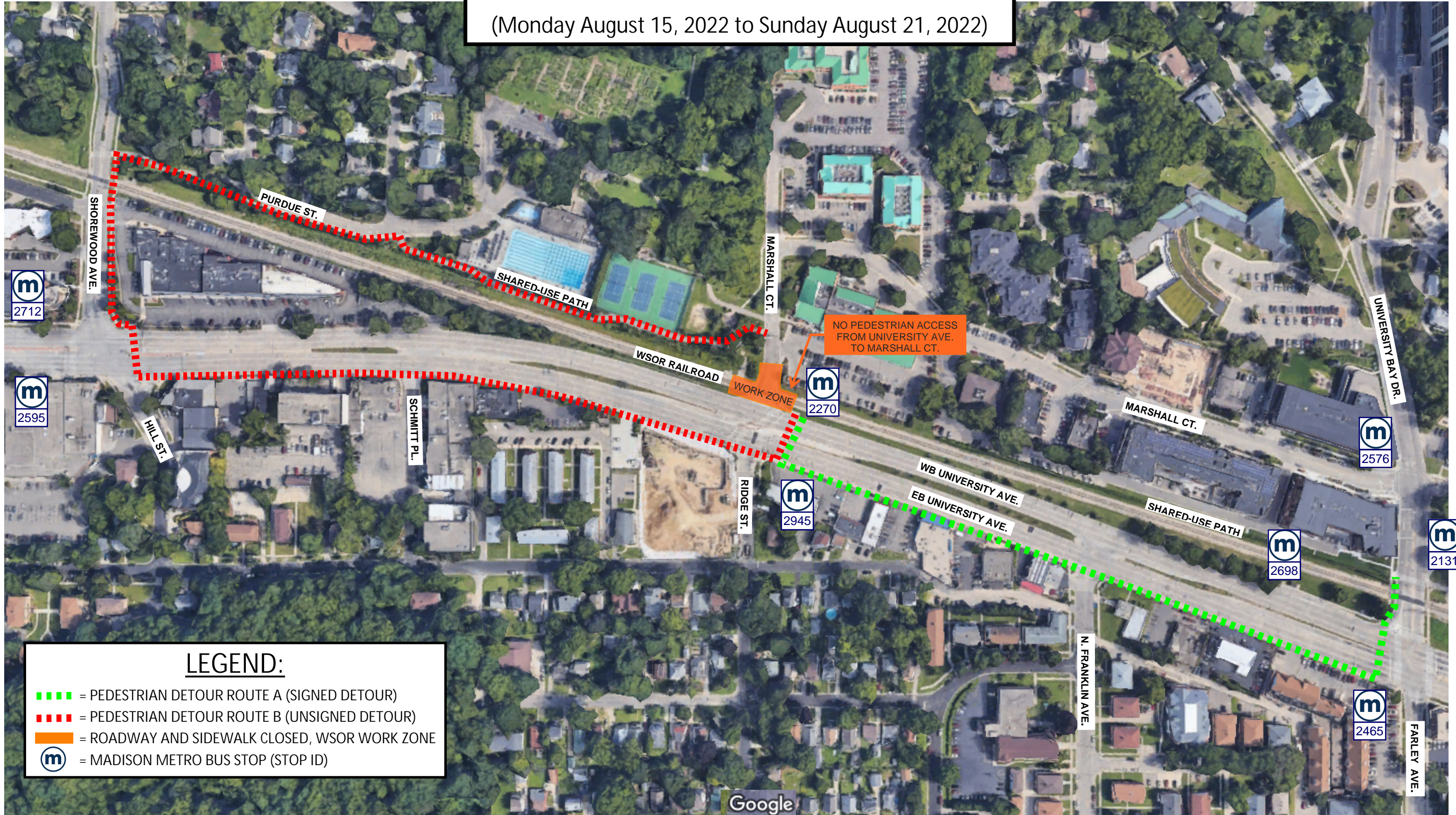


# PEDESTRIAN DETOUR

## FOR WSOR RAILROAD TRACK REPLACEMENT

### AT MARSHALL COURT

(Monday August 15, 2022 to Sunday August 21, 2022)



**LEGEND:**

- - - = PEDESTRIAN DETOUR ROUTE A (SIGNED DETOUR)
- - - = PEDESTRIAN DETOUR ROUTE B (UNSIGNED DETOUR)
- = ROADWAY AND SIDEWALK CLOSED, WSOR WORK ZONE
- m = MADISON METRO BUS STOP (STOP ID)