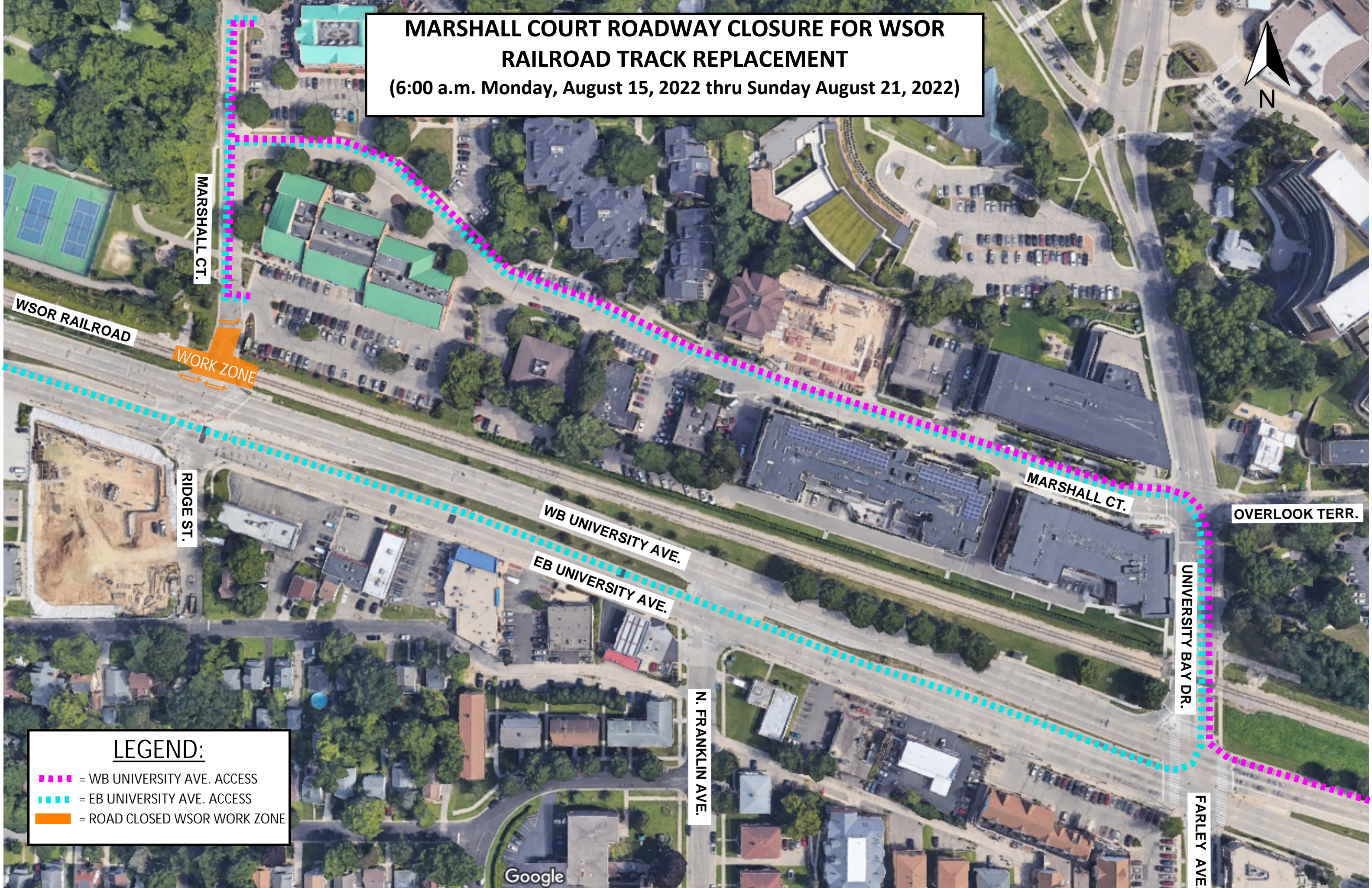





**MARSHALL COURT ROADWAY CLOSURE FOR WSOR
RAILROAD TRACK REPLACEMENT**
(6:00 a.m. Monday, August 15, 2022 thru Sunday August 21, 2022)



LEGEND:

-  = WB UNIVERSITY AVE. ACCESS
-  = EB UNIVERSITY AVE. ACCESS
-  = ROAD CLOSED WSOR WORK ZONE