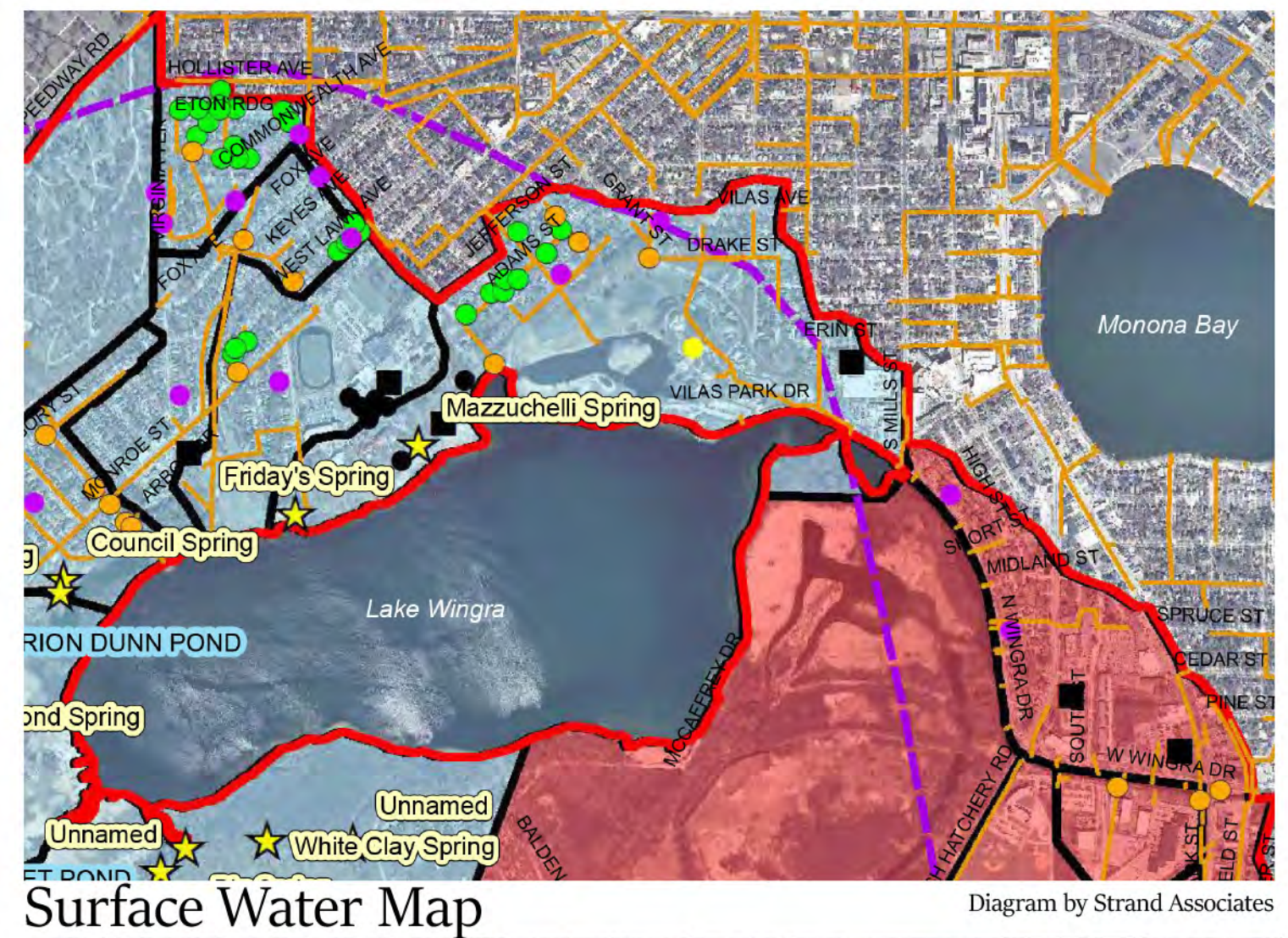


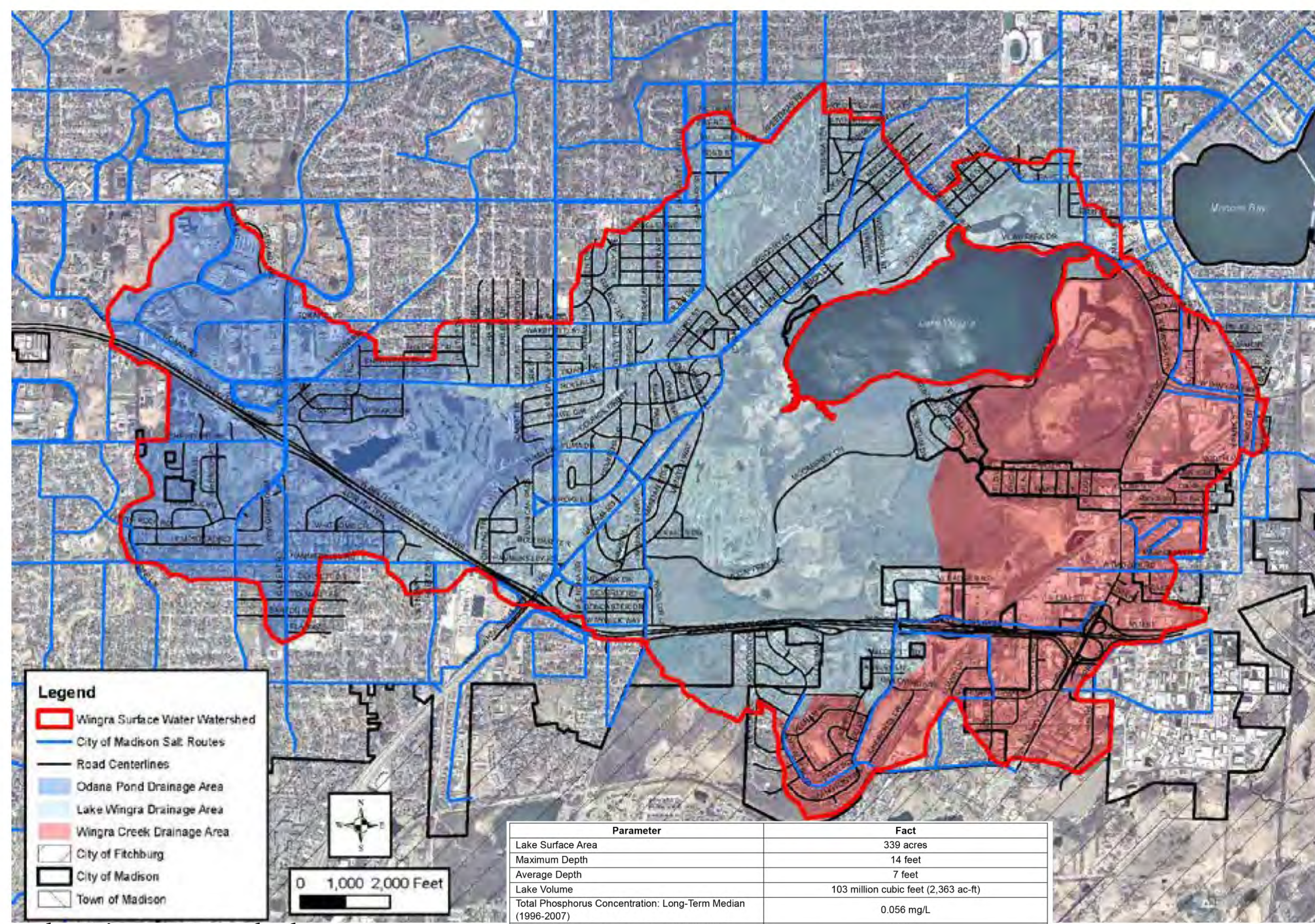
MASTER PLAN OF HENRY VILAS PARK MADISON, WISCONSIN



- Legend**
- Well
 - Existing Ponds
 - Existing MG&E Infiltration Facility
 - Pilot Project Area
 - Wingra Springs
 - City Catch Basin Structures (36)
- Rain Garden**
- Existing Institutional (10)
 - Existing Public (4)
 - Existing Residential (36)
 - Terrace Rain Gardens (32)
 - Existing Permitted Bio-retention (13)
 - Existing Storm Sewer
 - Wingra Surface Water Watershed
 - Groundwater Watershed Divide
 - Sub-Drainage Areas
 - Odana Pond Drainage Area
 - Lake Wingra Drainage Area
 - Wingra Creek Drainage Area



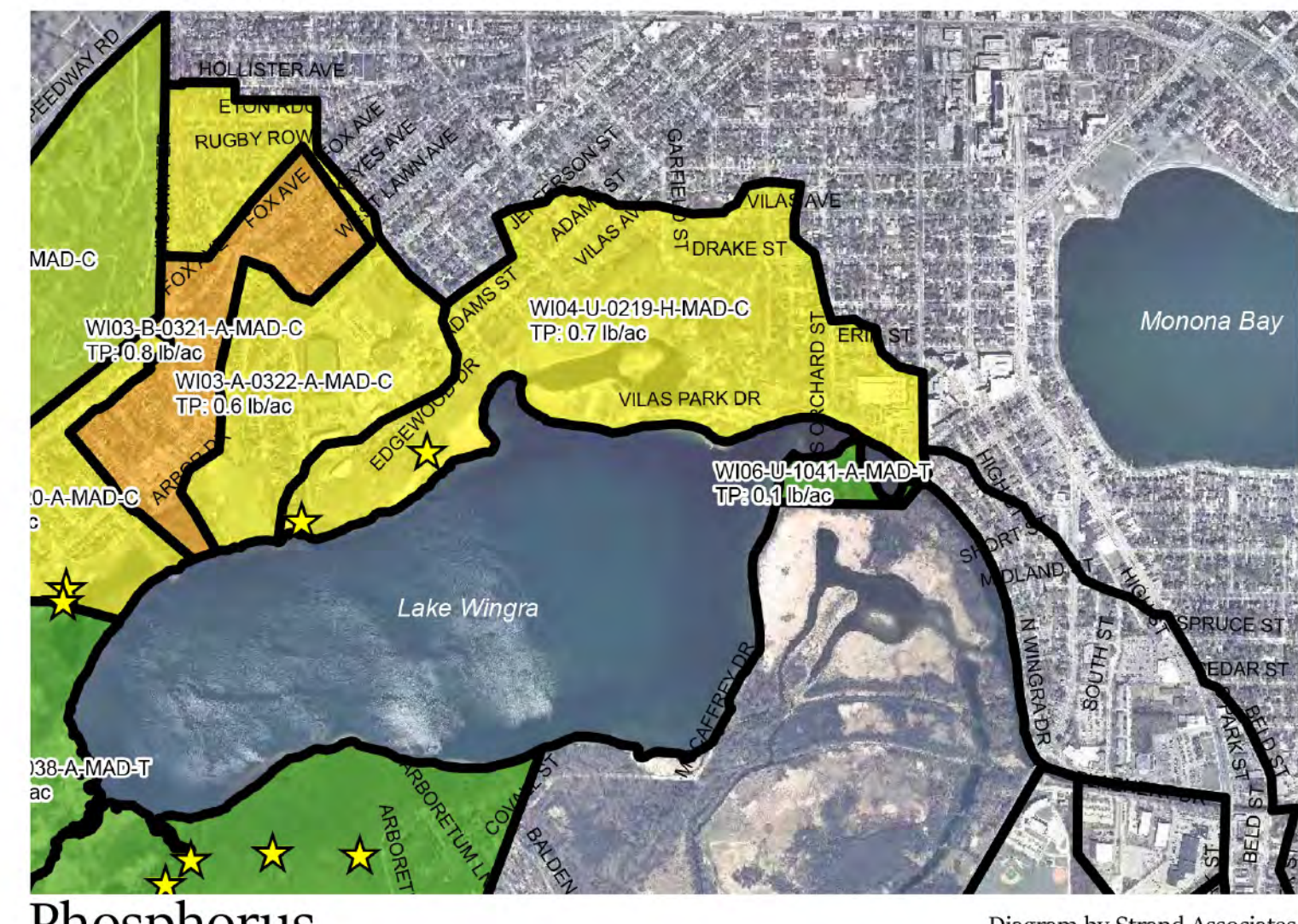
- Legend**
- BMP Drainage Area (41 acres)
 - Wingra Watershed
 - Sanitary Manhole
 - Sanitary Sewer
 - Storm Structure
 - Storm Sewer
 - Wetland
 - Index Contours
 - Intermediate Contours



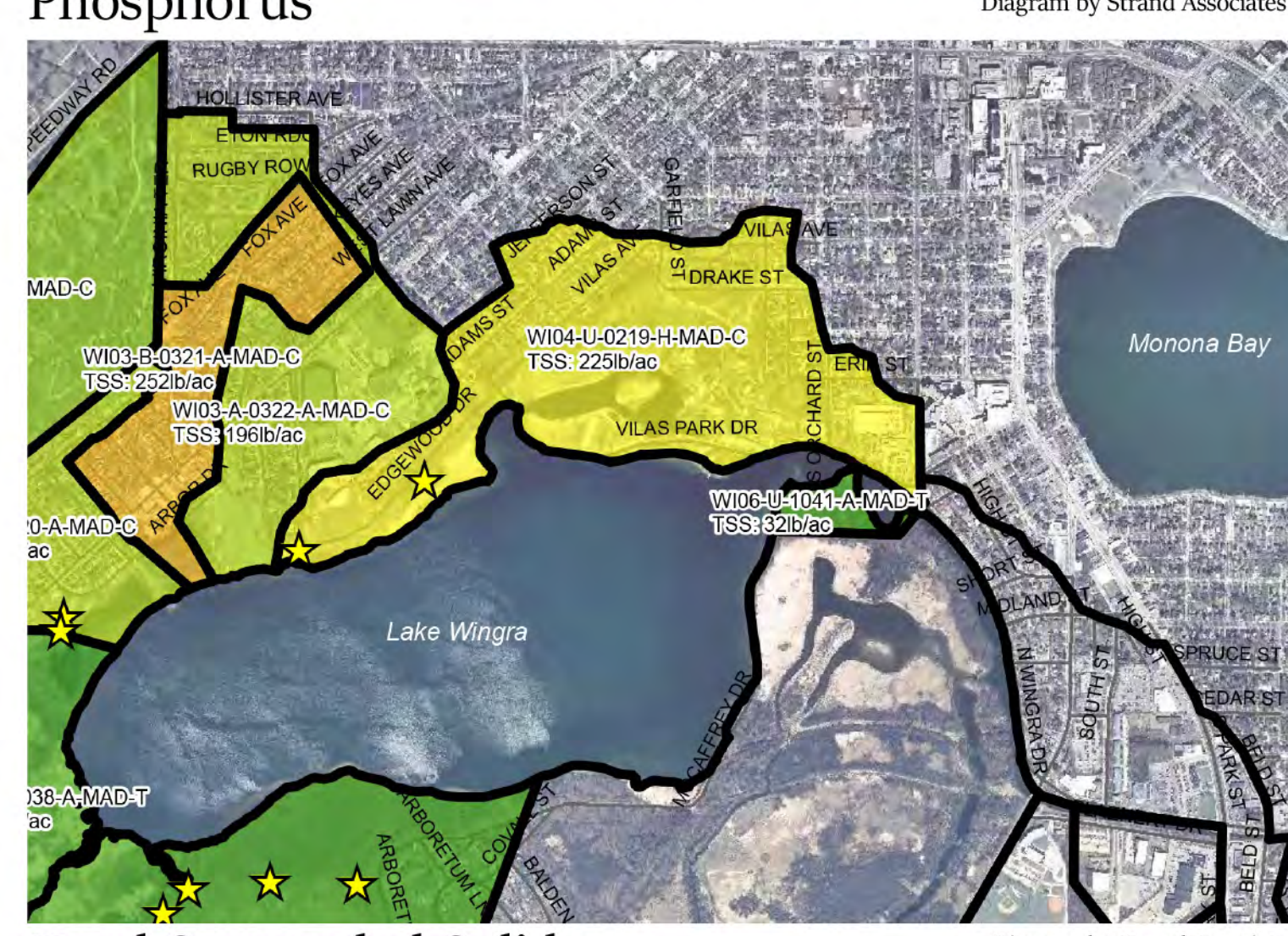
- Legend**
- Wingra Surface Water Watershed
 - City of Madison Salt Routes
 - Road Centerlines
 - Odana Pond Drainage Area
 - Lake Wingra Drainage Area
 - Wingra Creek Drainage Area
 - City of Fitchburg
 - City of Madison
 - Town of Madison

Parameter	Fact
Lake Surface Area	339 acres
Maximum Depth	14 feet
Average Depth	7 feet
Lake Volume	103 million cubic feet (2,363 ac-ft)
Total Phosphorus Concentration: Long-Term Median (1996-2007)	0.056 mg/L
Secchi Visibility: Long-Term Median (1996-2007)	2.0 feet
Watershed Draining To Lake	3,636 acres (5.68 sq. mi.)
Common Fish Species	Bluegill, Largemouth Bass, Muskellunge, Common Carp
WDNR Designation	303(d) Listed Impaired Water for Phosphorus and PCBs

Source: 2014 State of the Lakes Annual Report, Clean Lakes Alliance



- Legend**
- Wingra Springs
 - Sub-Drainage Areas
- Total Phosphorus No Controls (lb/ac)**
- 0.0 - 0.20
 - 0.21 - 0.40
 - 0.41 - 0.60
 - 0.61 - 0.80
 - 0.81 - 1.00
 - 1.01 - 1.20
 - 1.21 - 1.40



- Legend**
- Wingra Springs
 - Sub-Drainage Areas
- TSS No Controls (lb/ac)**
- 0.0 - 50.0
 - 50.1 - 100.0
 - 100.1 - 150.0
 - 150.1 - 200.0
 - 200.1 - 250.0
 - 250.1 - 300.0
 - 300.1 - 350.0
 - 350.1 - 400.0
 - 400.1 - 450.0



ENVIRONMENTAL STATION

