

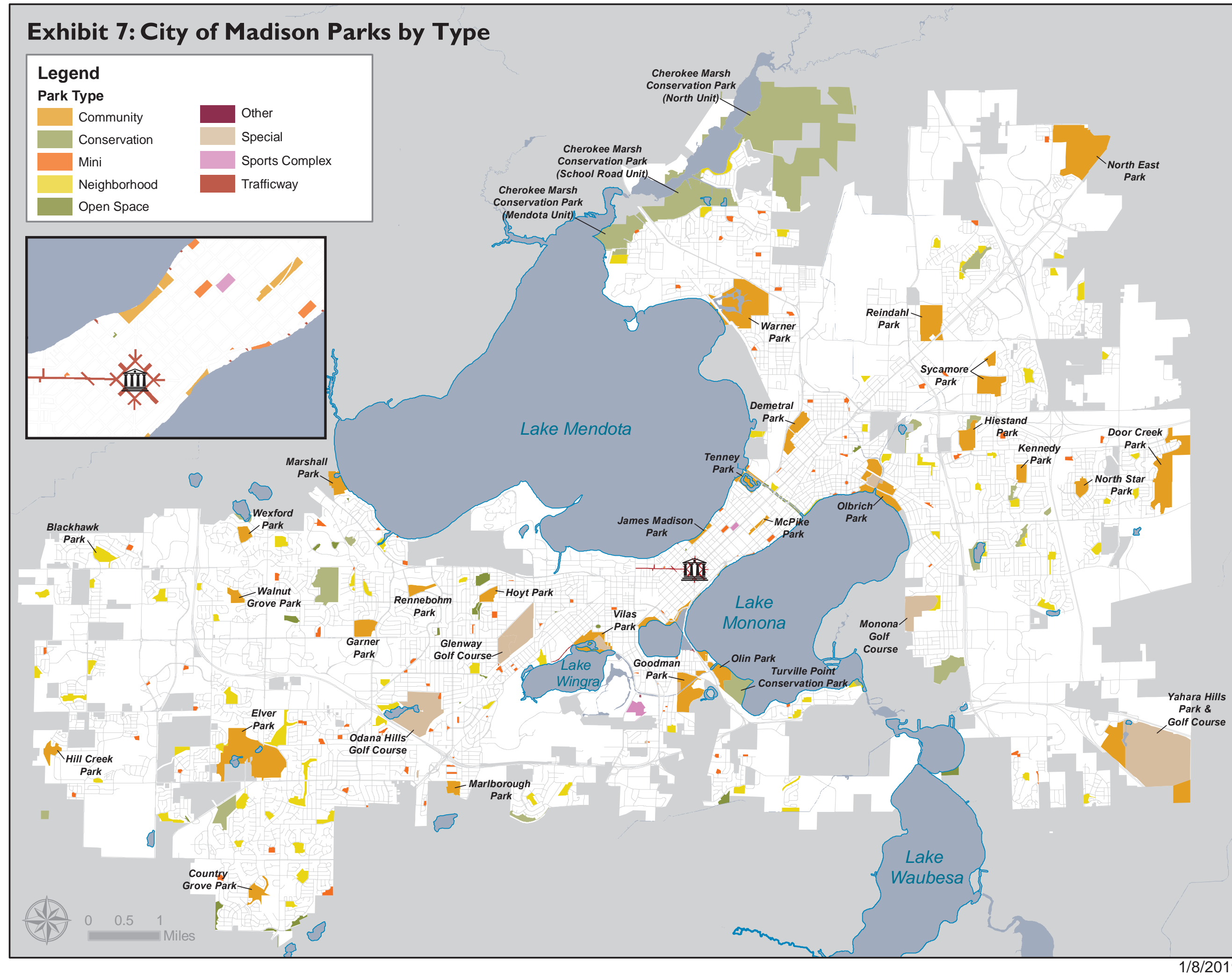
# What is a Community Park?

Vilas Park is classified as a "Community Park" in the City of Madison Park and Open Space Plan.

Community Parks are typically greater than 20 acres and serve a broader purpose than a neighborhood park. They focus on meeting community-based recreation needs, as well as preserving unique landscapes and open spaces.



The Vilas Park shelter is one of the top five most reserved shelters in the Madison park system.



1/8/2019



Vilas Park is a popular location for winter activities.



Vilas Park offers access opportunities for fishing and wildlife viewing.



The Shoe Slide is an iconic and beloved feature of the Vilas playground.

# MASTER PLAN OF HENRY VILAS PARK MADISON, WISCONSIN



## Guiding Planning Lenses

These guiding lenses are used in the City of Madison Comprehensive Plan and the Park and Open Space Plan.

What do we see through these lenses at Vilas Park?



**EQUITY:** The inherent worth of each individual should be esteemed and fostered, enabling them to reach full potential.



**PUBLIC HEALTH:** The access and contribution to mental and physical health of a community.



**SUSTAINABILITY:** Management of resources to promote welfare and equity for current and future generations.



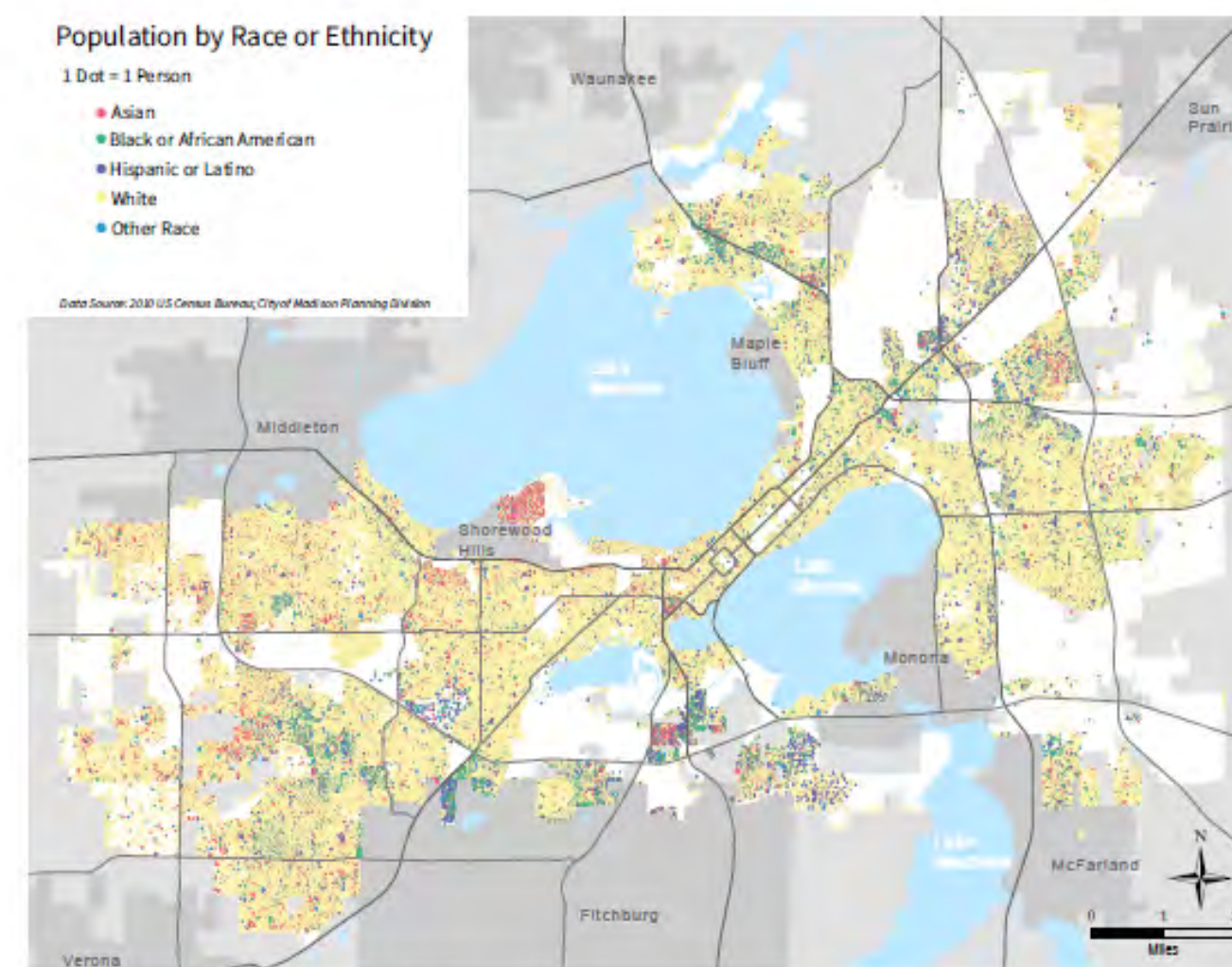
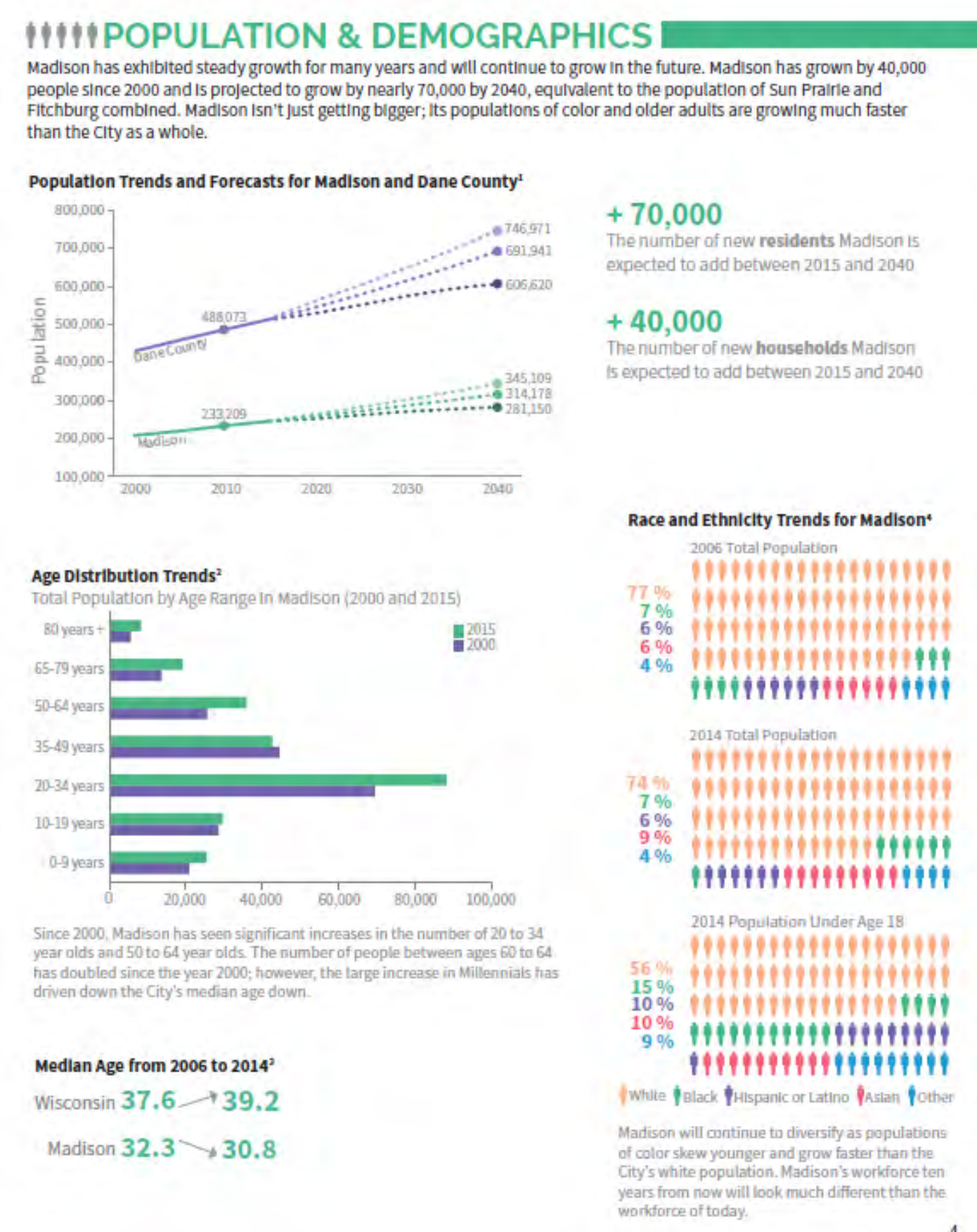
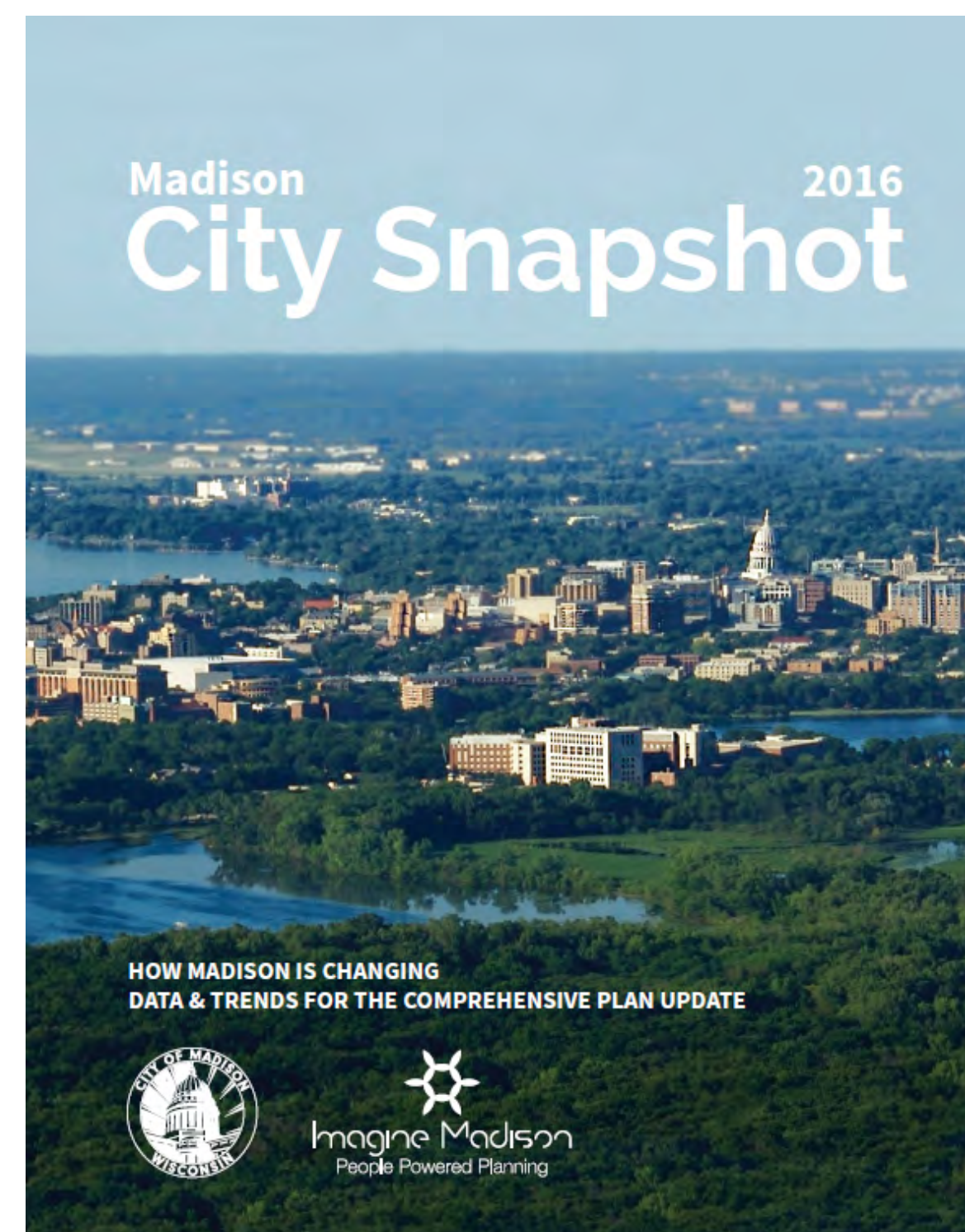
**ADAPTABILITY:** Preparedness and ability to respond to and recover from hazards and threats with minimal damage to safety, health, security, and the economy.

# Madison is Changing in Many Ways

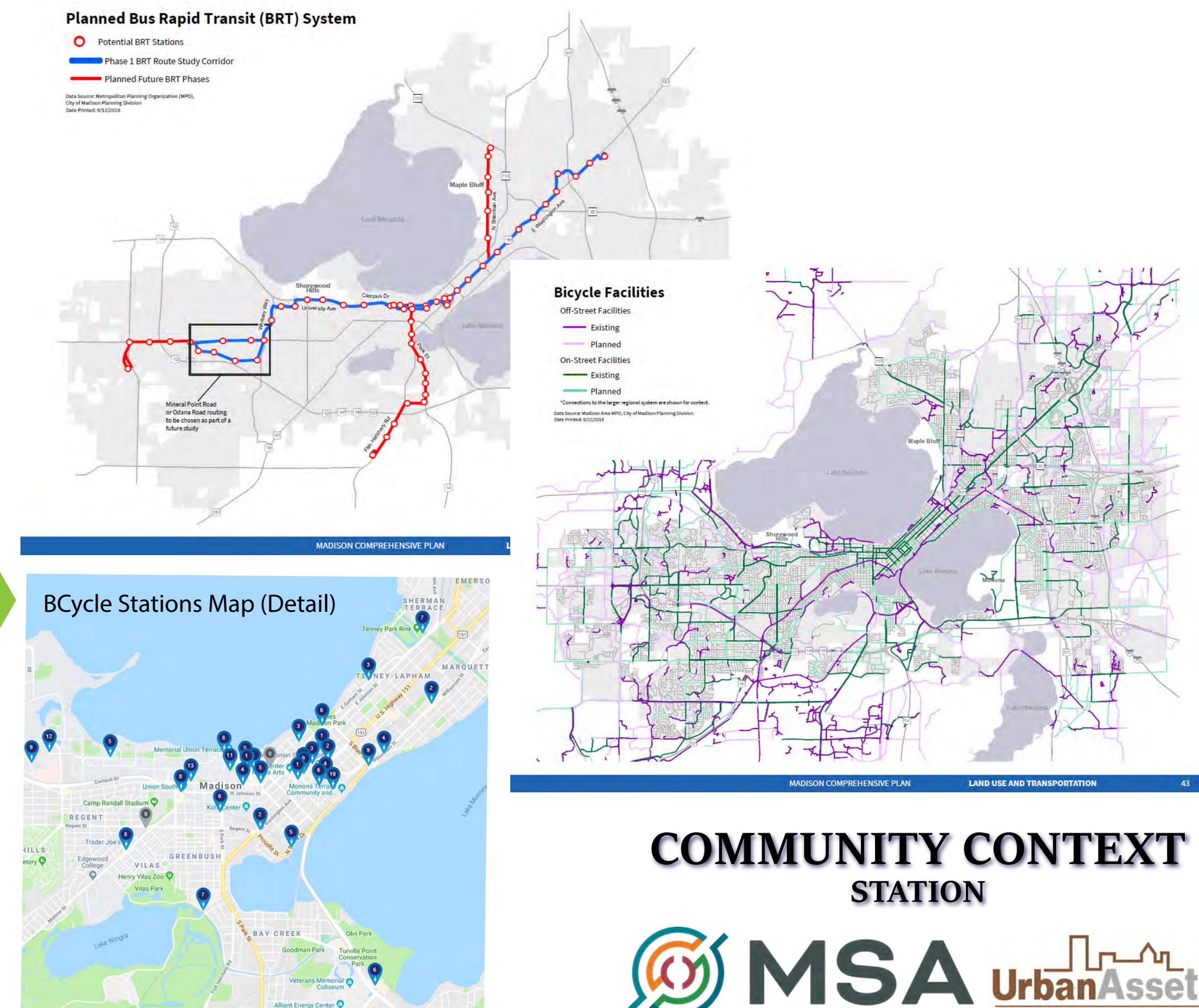
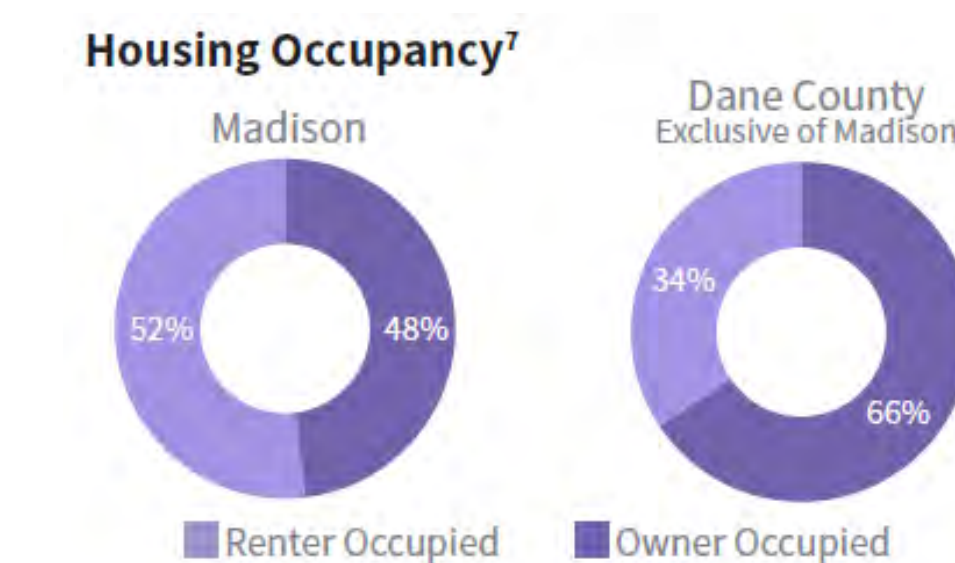
Madison's population is growing and becoming more diverse. The majority of residents are now renters. Alternative modes of transportation are becoming more popular, and necessary to accommodate growth.

What do these changes mean for Vilas Park?

How can Vilas continue to serve our whole community as Madison grows and changes?



While persons of color comprise more than one quarter of Madison's population, many communities of color are geographically concentrated in just a few neighborhoods: Eagle Heights, located just north of Shorewood Hills, is a neighborhood of campus housing for graduate students at UW-Madison. Note the different distribution of where Madisonians live and where they work (see page 12).



## COMMUNITY CONTEXT STATION

