

SWALLOWTAIL PARK

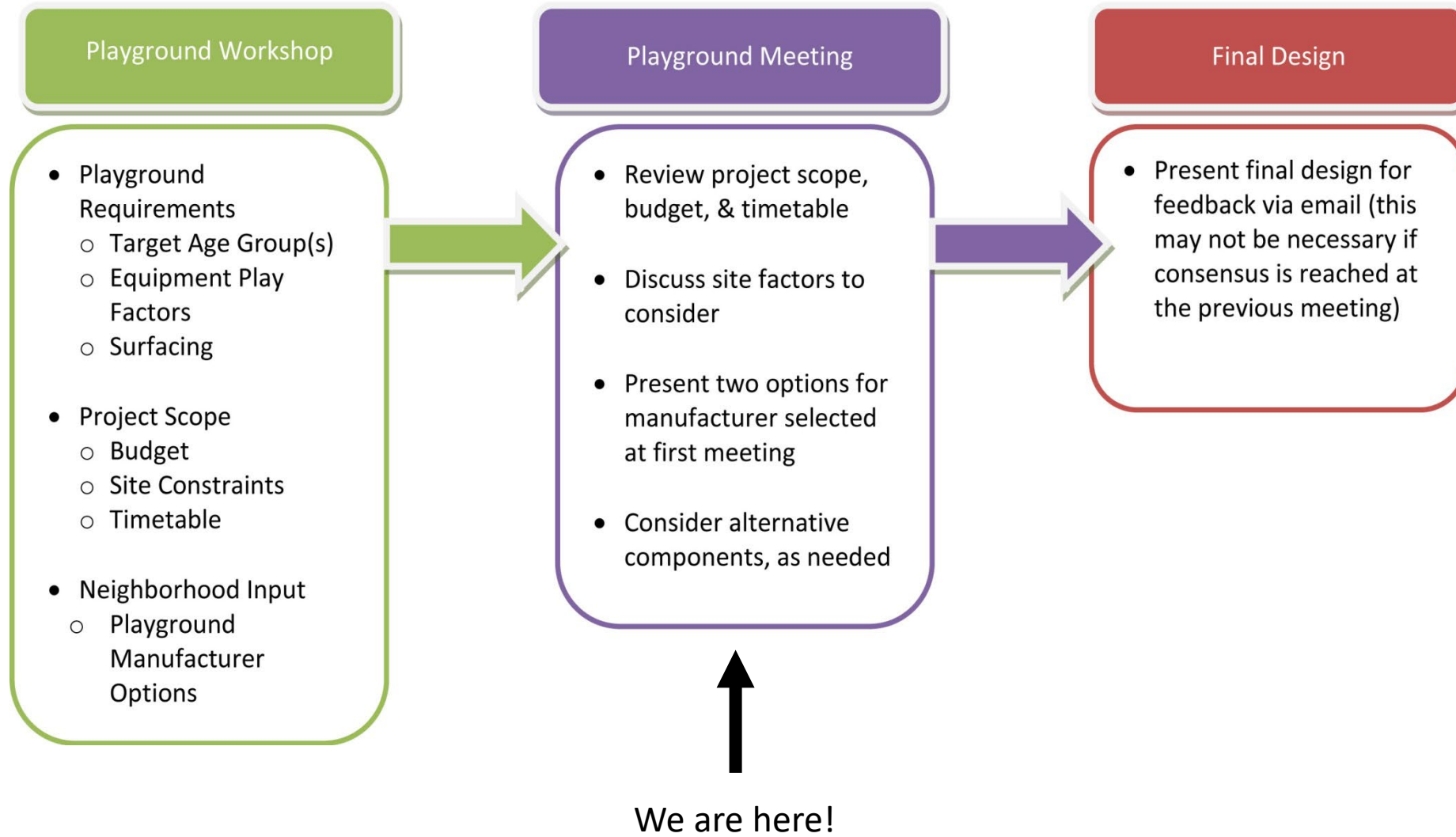
PLAYGROUND WORKSHOP 2

January 14, 2021

Sarah Close – Parks Division Project Manager



PARKS DIVISION PLAYGROUND DESIGN PROCESS

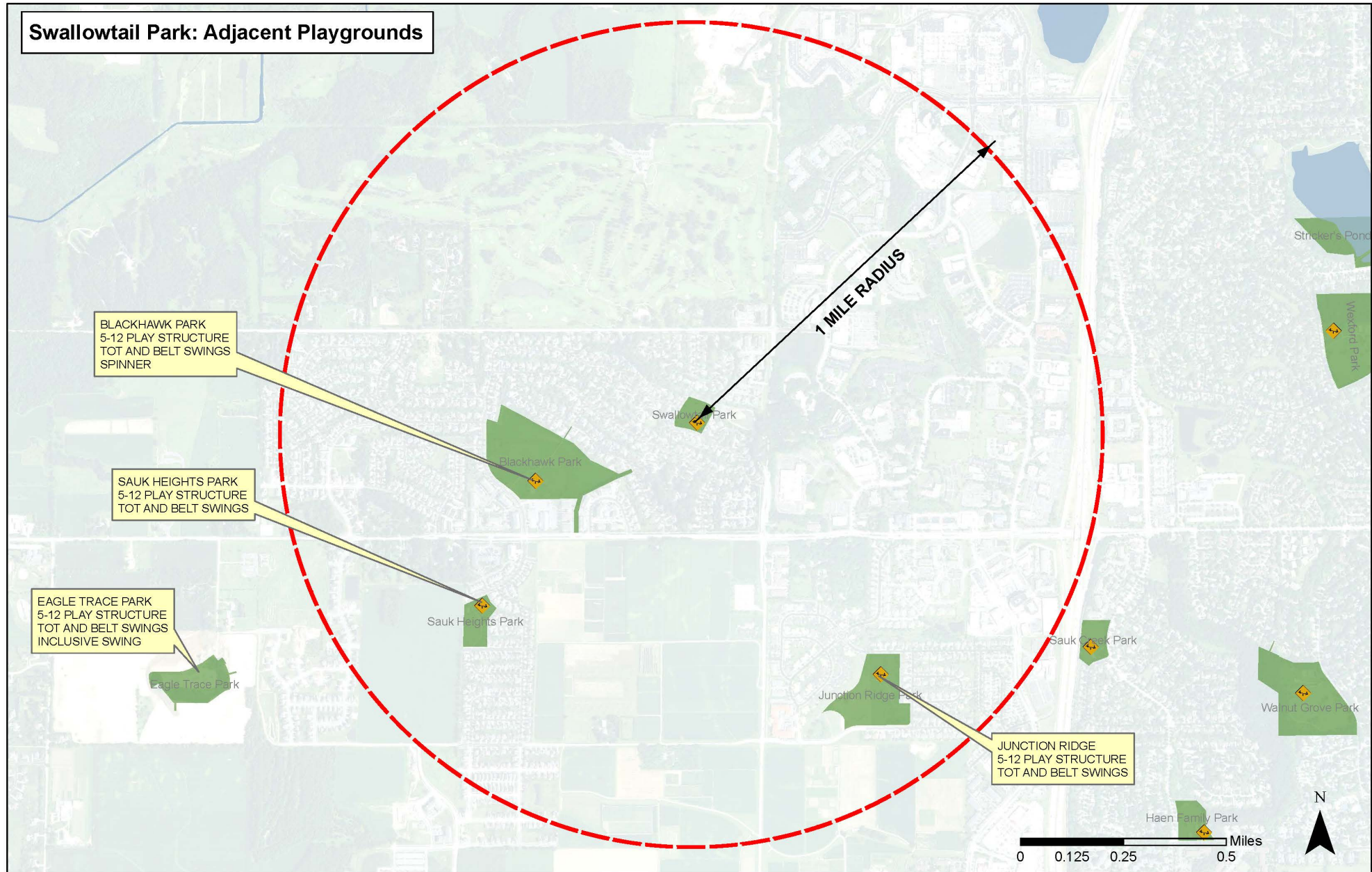


SWALLOWTAIL PARK – EXISTING PLAYGROUND EQUIPMENT





SWALLOWTAIL PARK – ADJACENT PLAYGROUNDS



- Intended age group of play structure: 5-12, with opportunities for younger
- Safety surfacing: Recycled rubber mulch
- Colors: Blue posts with light blue railings, or tan posts with light blue railings
- Playground Manufacturer: Burke
 - Specific requests include: Short slide for younger children, opportunities for younger children, donation for Spinetic feature (shown in both options)

SWALLOWTAIL PARK – REPLACEMENT EQUIPMENT OPTION 1



LEE RECREATION, LLC

Providing Fun Across Wisconsin Since 1995

info@leerecreation.com • 260 W. Main Street • Cambridge, WI 53523

WWW.LEERECREATION.COM • (800) 775-8937

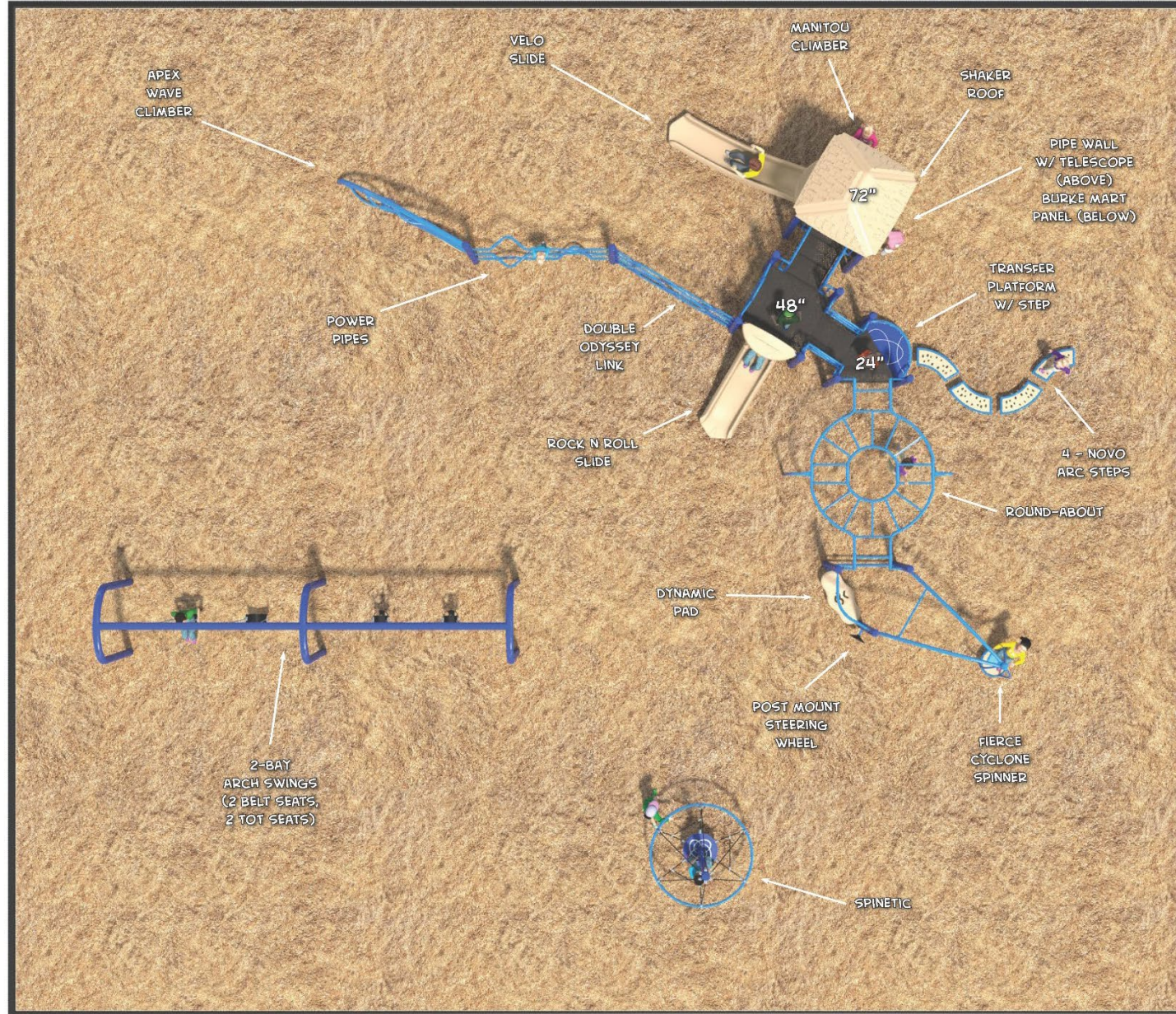


PROPOSAL #142-135321-2

SWALLOWTAIL PARK

Burke
PLAY THAT MOVES YOU.

SWALLOWTAIL PARK – REPLACEMENT EQUIPMENT OPTION 1



SWALLOWTAIL PARK – REPLACEMENT EQUIPMENT OPTION 1

Burke

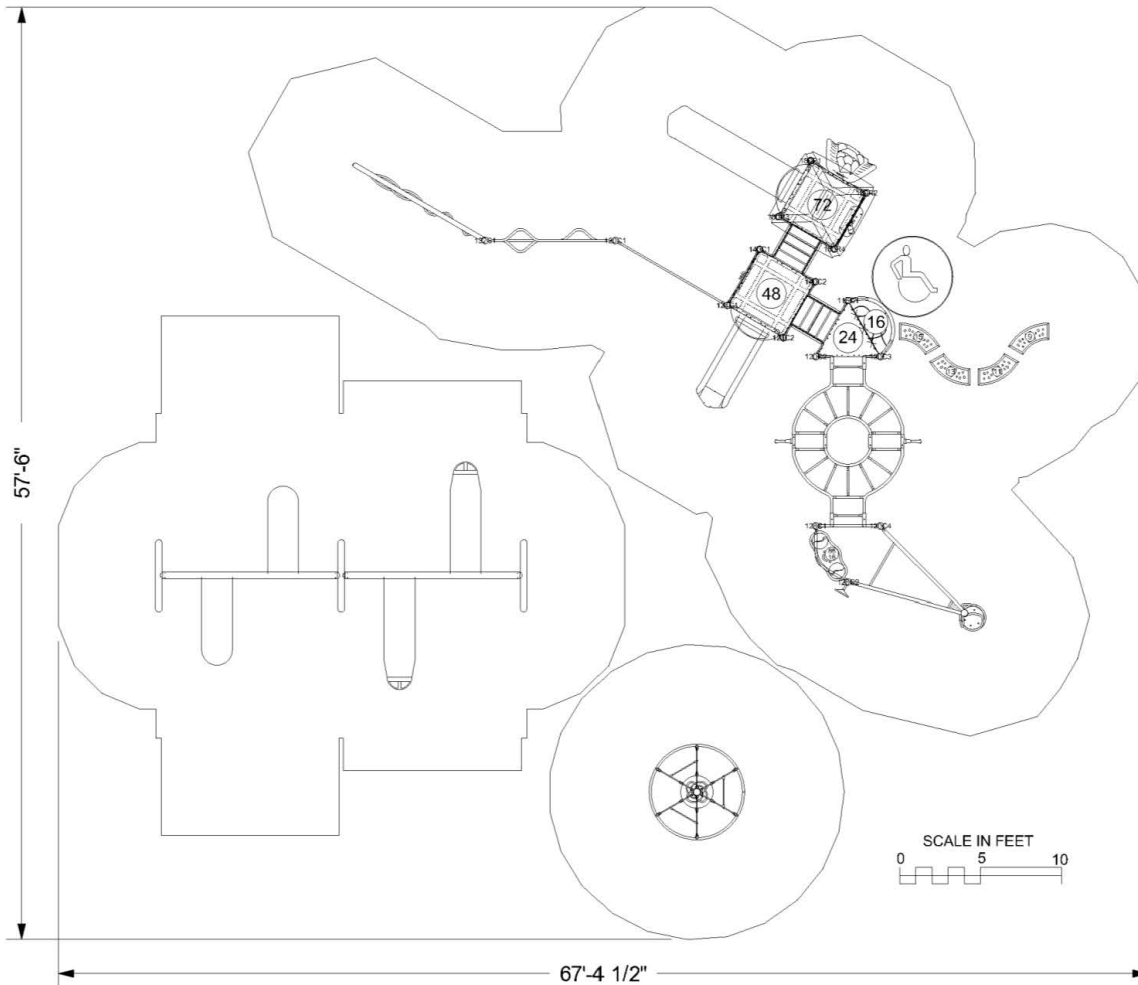
SERIES: Basics, Intensity, Nucleus
 SITE PLAN
 DRAWN BY: Stevie Rosenkranz

BCI Burke Company, LLC PO Box 549 Fond du Lac, Wisconsin 54936-0549 Telephone 920-921-9220

Swallowtail Park
 901 Swallowtail Dr
 Madison, WI 53717

Lee Recreation, LLC
 142-135321-2

December 22, 2020



INFORMATION
 MINIMUM FALL ZONE
 SURFACED WITH
 RESILIENT MATERIAL
 AREA
 2401 SQ.FT.
 PERIMETER
 370 FT.
 STRUCTURE SIZE
 57' 6" x 67' 5"
 STRUCTURE IS DESIGNED
 FOR CHILDREN AGES:

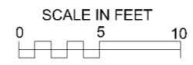
6-23 MONTH OLDS
 2-5 YEAR OLDS
 5-12 YEAR OLDS
 13+ YEAR OLDS



The play components identified in this plan are IPEMA certified. The use and layout of these components conform to the requirements of ASTM F1487. To verify product certification, visit www.ipema.org

The space requirements shown here are to ASTM standards. Requirements for other standards may be different.

The use and layout of play components identified in this plan conform to the CPSC guidelines. U.S. CPSC recommends the separation of age groups in playground layouts.



ADA ACCESSIBILITY GUIDELINE (ADAAG CONFORMANCE)

NUMBER OF PLAY EVENTS:	22	
NUMBER OF ELEVATED PLAY EVENTS:	7	
NUMBER OF ELEVATED PLAY EVENTS ACCESSIBLE BY RAMP:	PROVIDED: 0	REQD: 0
NUMBER OF ELEVATED PLAY EVENTS ACCESSIBLE BY TRANSFER SYSTEM:	PROVIDED: 7	REQD: 7
NUMBER OF ELEVATED PLAY EVENTS ACCESSIBLE BY RAMP OR TRANSFER SYSTEM:	PROVIDED: 15	REQD: 4
NUMBER OF GROUND LEVEL PLAY EVENTS:	PROVIDED: 8	REQD: 2
NUMBER OF TYPES OF GROUND LEVEL PLAY EVENTS:	PROVIDED: 8	REQD: 2

WARNING!
 ACCESSIBLE SAFETY SURFACING MATERIAL IS REQUIRED BENEATH AND AROUND THIS EQUIPMENT.
 FOR SLIDE FALL ZONE SURFACING AREA SEE CPSC's Handbook for Public Playground Safety.
 PLATFORM HEIGHTS ARE IN INCHES ABOVE RESILIENT MATERIAL.

SWALLOWTAIL PARK – REPLACEMENT EQUIPMENT OPTION 2



WWW.LEERECREATION.COM • (800) 775-8937



LEE RECREATION, LLC

Providing Fun Across Wisconsin Since 1995

info@leerecreation.com • 260 W. Main Street • Cambridge, WI 53523

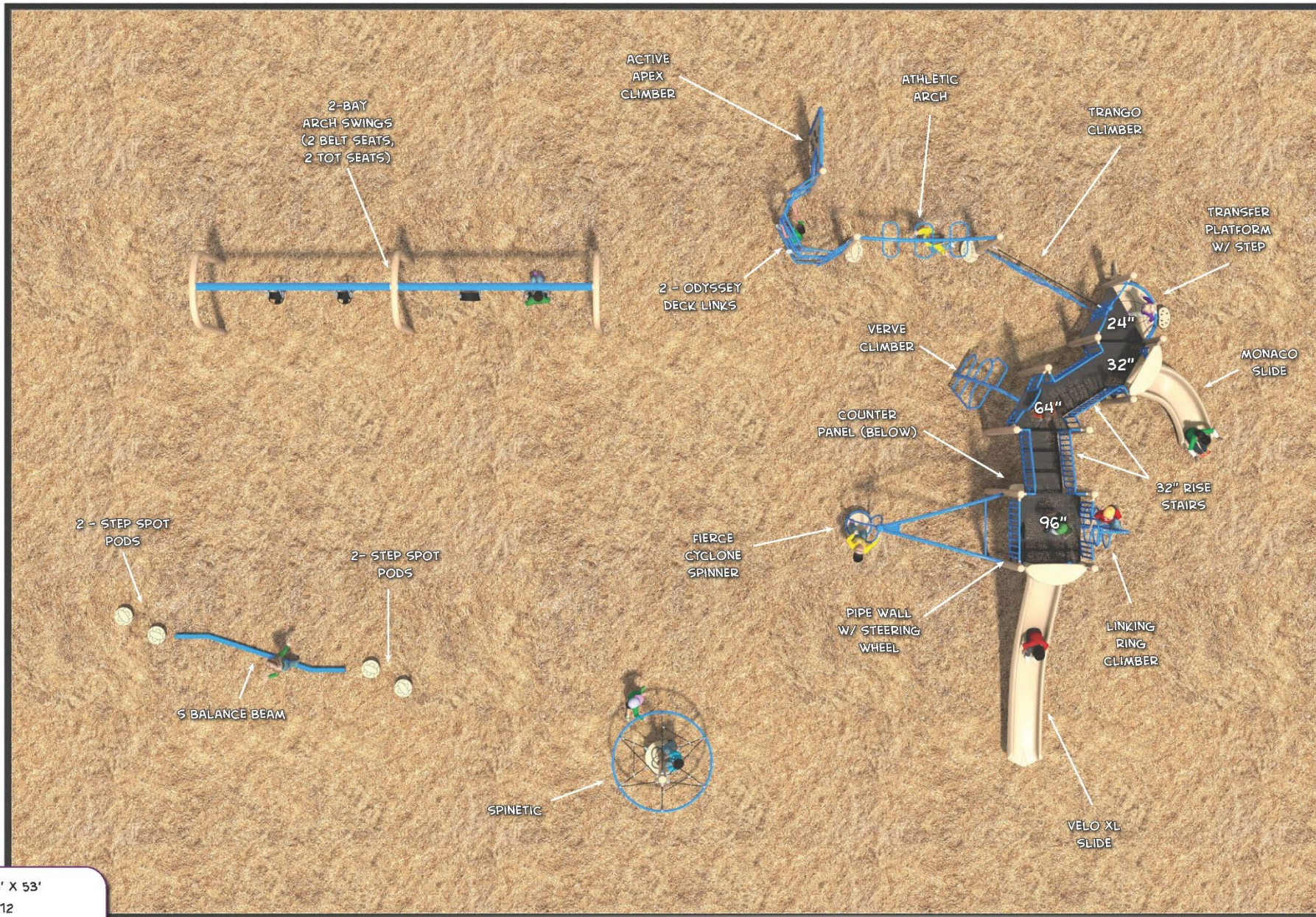


Burke
PLAY THAT MOVES YOU.

SWALLOWTAIL PARK

PROPOSAL #142-135322-2

SWALLOWTAIL PARK – REPLACEMENT EQUIPMENT OPTION 2



8' X 53'

-12

1'

SWALLOWTAIL PARK – REPLACEMENT EQUIPMENT OPTION 2

Burke

SERIES: Basics, Intensity, Nucleus, Synergy

SITE PLAN

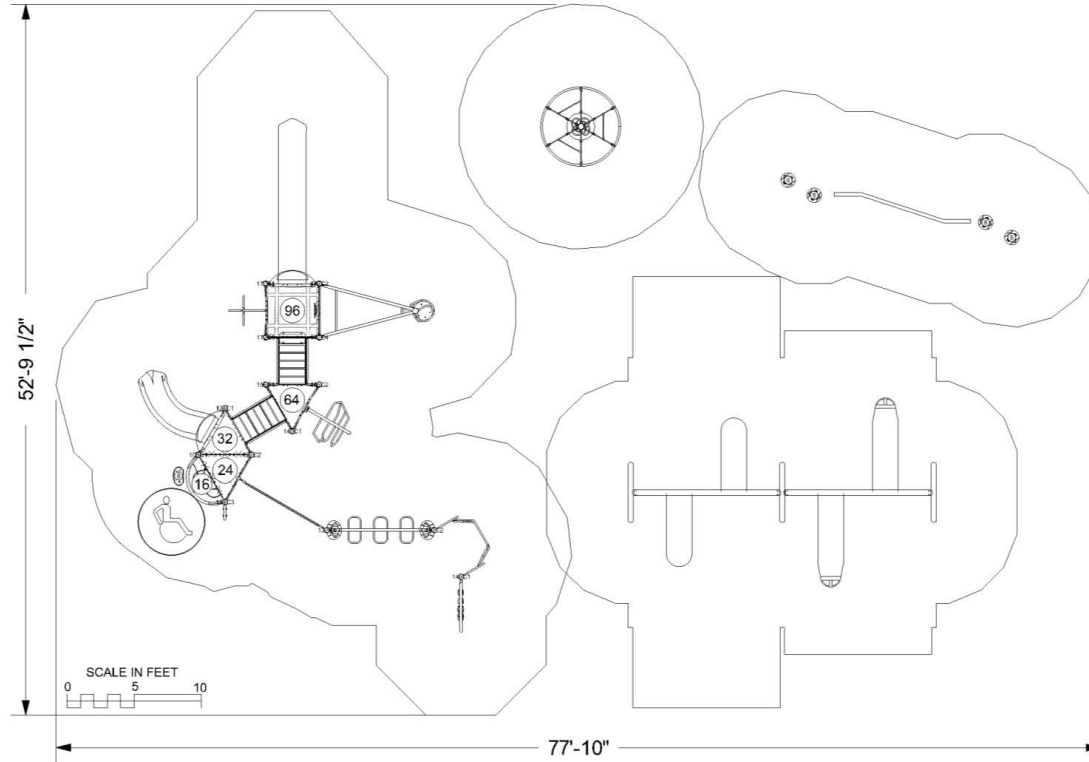
DRAWN BY: Stevie Rosenkranz

BCI Burke Company, LLC PO Box 549 Fond du Lac, Wisconsin 54936-0549 Telephone 920-921-9220

Swallowtail Park
901 Swallowtail Dr
Madison, WI 53717

Lee Recreation, LLC
142-135322-2

December 22, 2020



INFORMATION
MINIMUM FALL ZONE
 SURFACED WITH
 RESILIENT MATERIAL
 AREA
 2579 SQ.FT.
PERIMETER
 426 FT.
STRUCTURE SIZE
 52' 10" x 77' 10"
 STRUCTURE IS DESIGNED
 FOR CHILDREN AGES:

6-23 MONTH OLDS
 2-5 YEAR OLDS
 5-12 YEAR OLDS
 13 + YEAR OLDS



The play components identified in this plan are IPEMA certified. The use and layout of these components conform to the requirements of ASTM F1487. To verify product certification, visit www.ipema.org

The space requirements shown here are to ASTM standards. Requirements for other standards may be different.

The use and layout of play components identified in this plan conform to the CPSC guidelines. U.S. CPSC recommends the separation of age groups in playground layouts.

ADA ACCESSIBILITY GUIDELINE (ADAAG CONFORMANCE)

NUMBER OF PLAY EVENTS	24		
NUMBER OF ELEVATED PLAY EVENTS	6		
NUMBER OF ELEVATED PLAY EVENTS ACCESSIBLE BY RAMP	PROVIDED: 0	REQD: 0	
NUMBER OF ELEVATED PLAY EVENTS ACCESSIBLE BY TRANSFER SYSTEM	PROVIDED: 6	REQD: 6	
NUMBER OF ELEVATED PLAY EVENTS ACCESSIBLE BY RAMP OR TRANSFER SYSTEM	PROVIDED: 18	REQD: 3	
NUMBER OF GROUND LEVEL PLAY EVENTS	PROVIDED: 18	REQD: 2	
NUMBER OF TYPES OF GROUND LEVEL PLAY EVENTS	PROVIDED: 9	REQD: 2	

WARNING!

ACCESSIBLE SAFETY SURFACING MATERIAL IS REQUIRED BENEATH AND AROUND THIS EQUIPMENT.

FOR SLIDE FALL ZONE SURFACING AREA SEE CPSC'S Handbook for Public Playground Safety.

PLATFORM HEIGHTS ARE IN INCHES ABOVE RESILIENT MATERIAL.

SWALLOWTAIL PARK – REPLACEMENT EQUIPMENT OPTIONS COMPARISON

Option 1

- Shaker roof
- Round-About monkey bars
- Novo Arc Steppers
- Telescope
- 4 climbers
 - Manitou, Double Odyssey Link, Power Pipes, Apex Wave

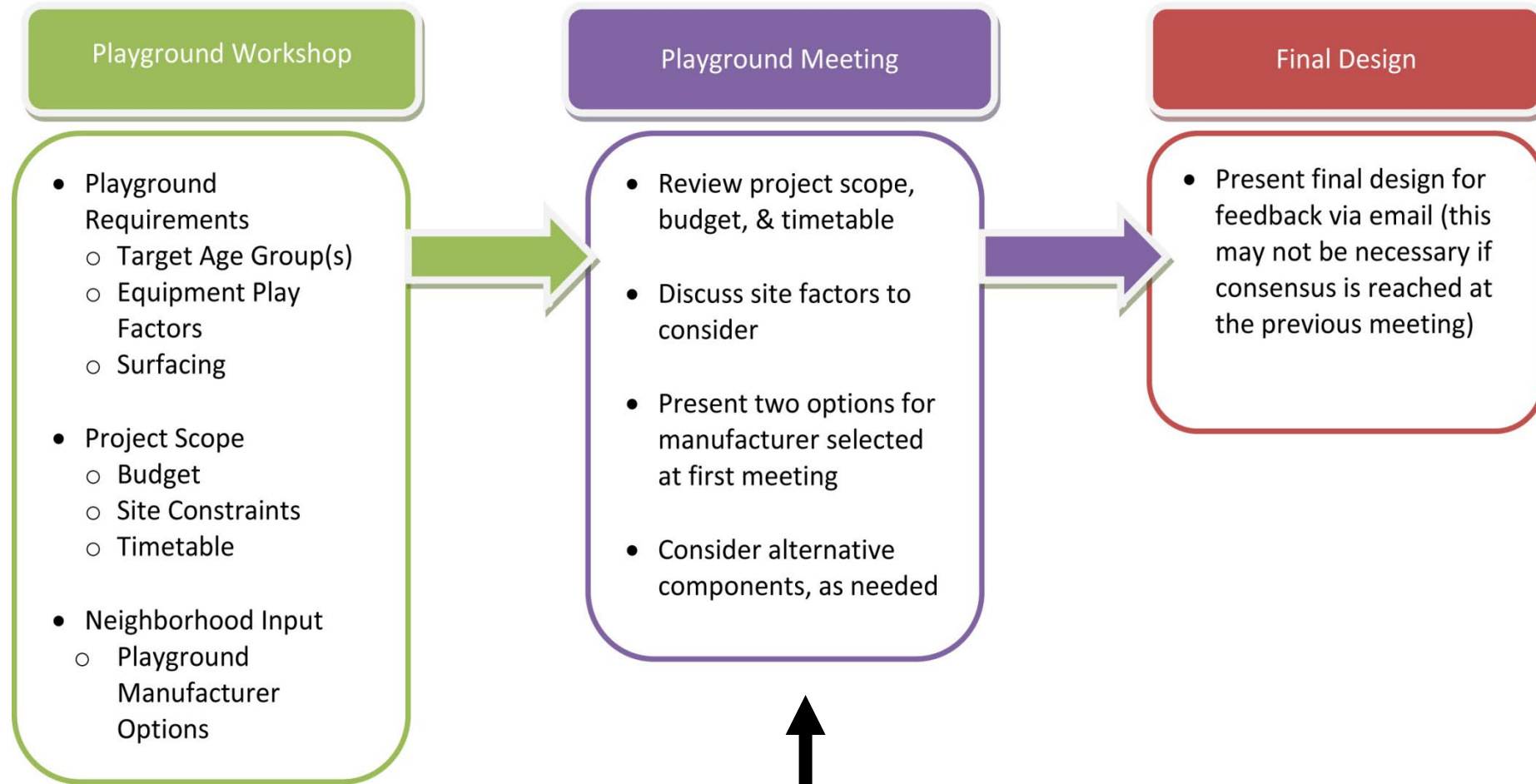
VS.

Option 2

- No roof
- Athletic Arch monkey bars
- Step Spot pods with S Balance Beam
- 5 climbers
 - Active Apex, Odyssey Deck Links, Trango, Verve, Linking Ring



ORCHARD RIDGE PARK – NEXT STEPS



We are here!

Thank you!

Additional information related to this project is posted on the Parks Project Portal, here:
<https://www.cityofmadison.com/parks/projects/swallowtail-park-playground-improvements>

Contact Sarah Close, project manager, with additional questions or comments.
(608) 263-6850 or sclose@cityofmadison.com

