

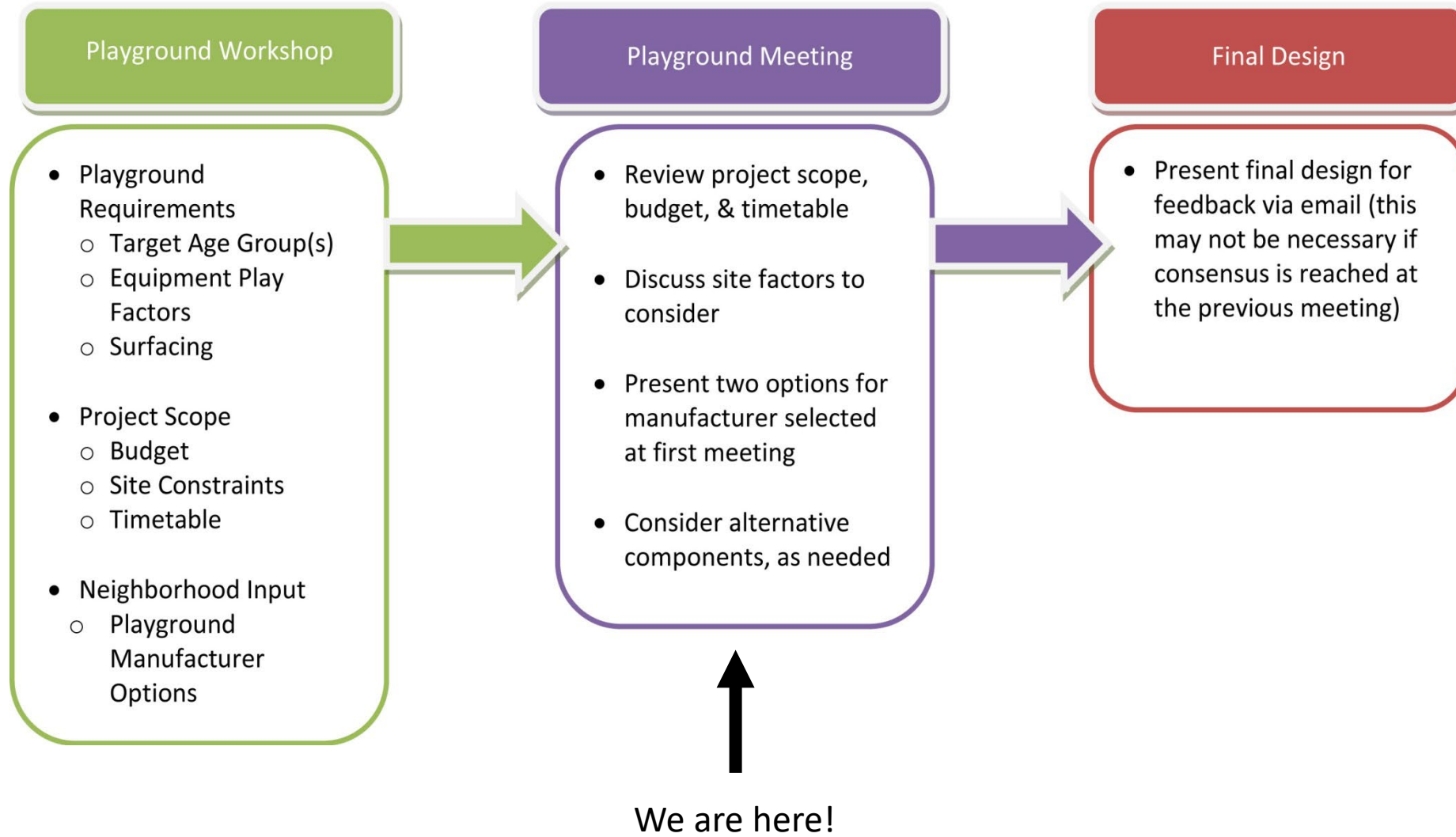
ORCHARD RIDGE PARK PLAYGROUND WORKSHOP 2

January 12, 2021

Sarah Close – Parks Division Project Manager

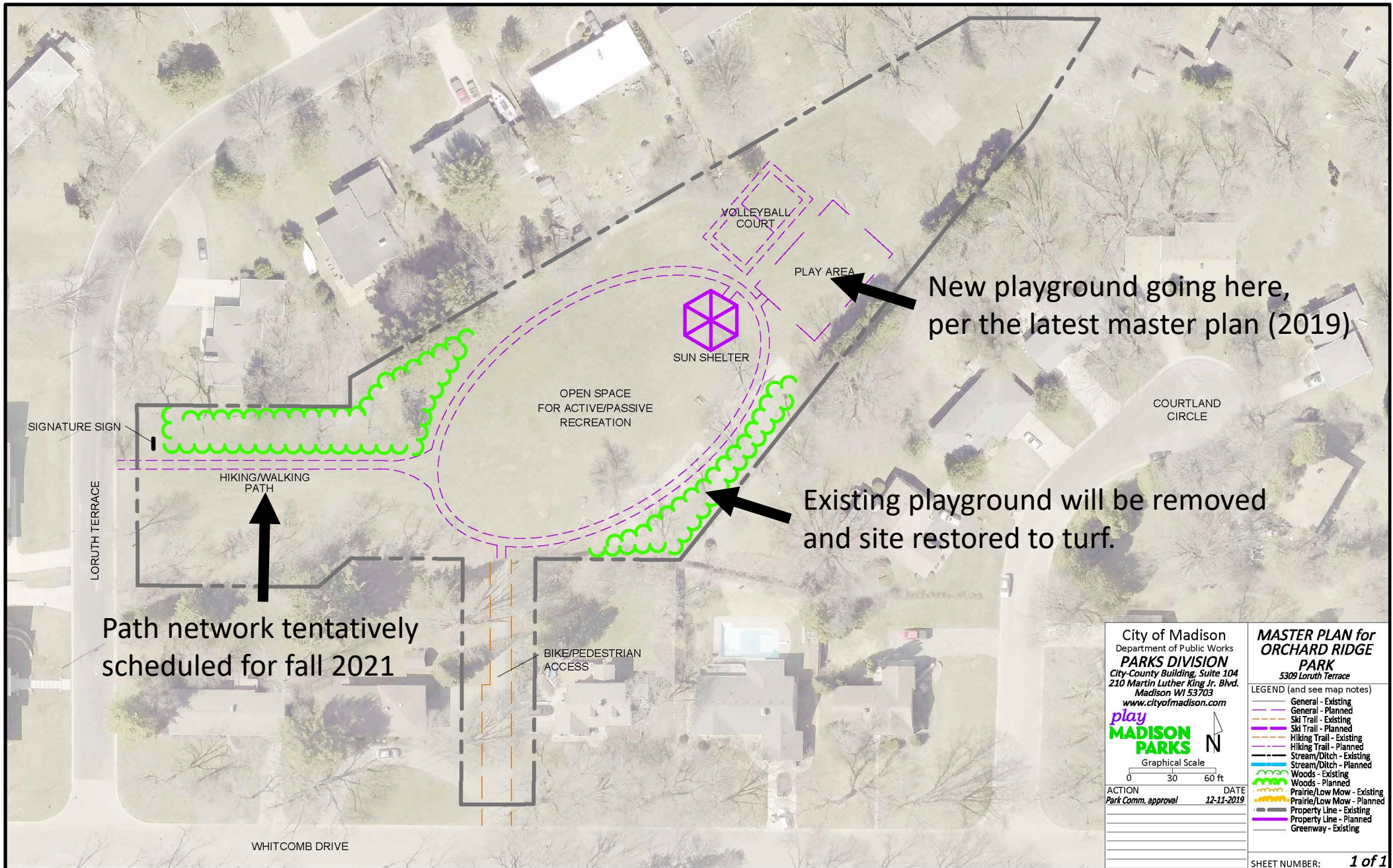


PARKS DIVISION PLAYGROUND DESIGN PROCESS



ORCHARD RIDGE PARK – EXISTING PLAYGROUND EQUIPMENT





New playground going here, per the latest master plan (2019)

Existing playground will be removed and site restored to turf.

Path network tentatively scheduled for fall 2021

City of Madison
 Department of Public Works
PARKS DIVISION
 City-County Building, Suite 104
 210 Martin Luther King Jr. Blvd.
 Madison WI 53703
www.cityofmadison.com

play
MADISON
PARKS

Graphical Scale
 0 30 60 ft

ACTION DATE
 Park Comm. approval 12-11-2019

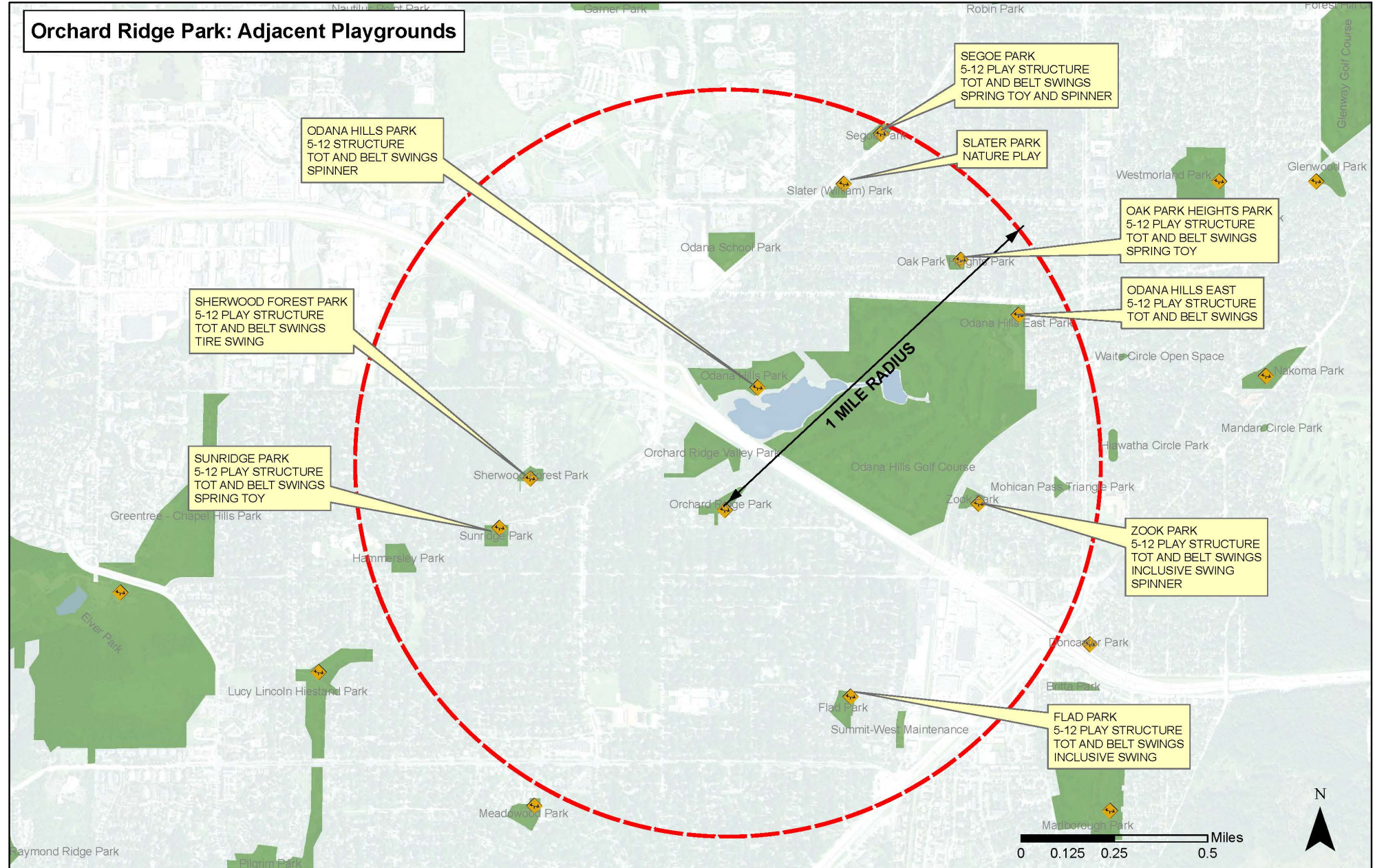
MASTER PLAN for ORCHARD RIDGE PARK
 5309 Loruth Terrace

LEGEND (and see map notes)

- General - Existing
- General - Planned
- Ski Trail - Existing
- Ski Trail - Planned
- Hiking Trail - Existing
- Hiking Trail - Planned
- Stream/Ditch - Existing
- Stream/Ditch - Planned
- Woods - Existing
- Woods - Planned
- Prairie/Low Mow - Existing
- Prairie/Low Mow - Planned
- Property Line - Existing
- Property Line - Planned
- Greenway - Existing

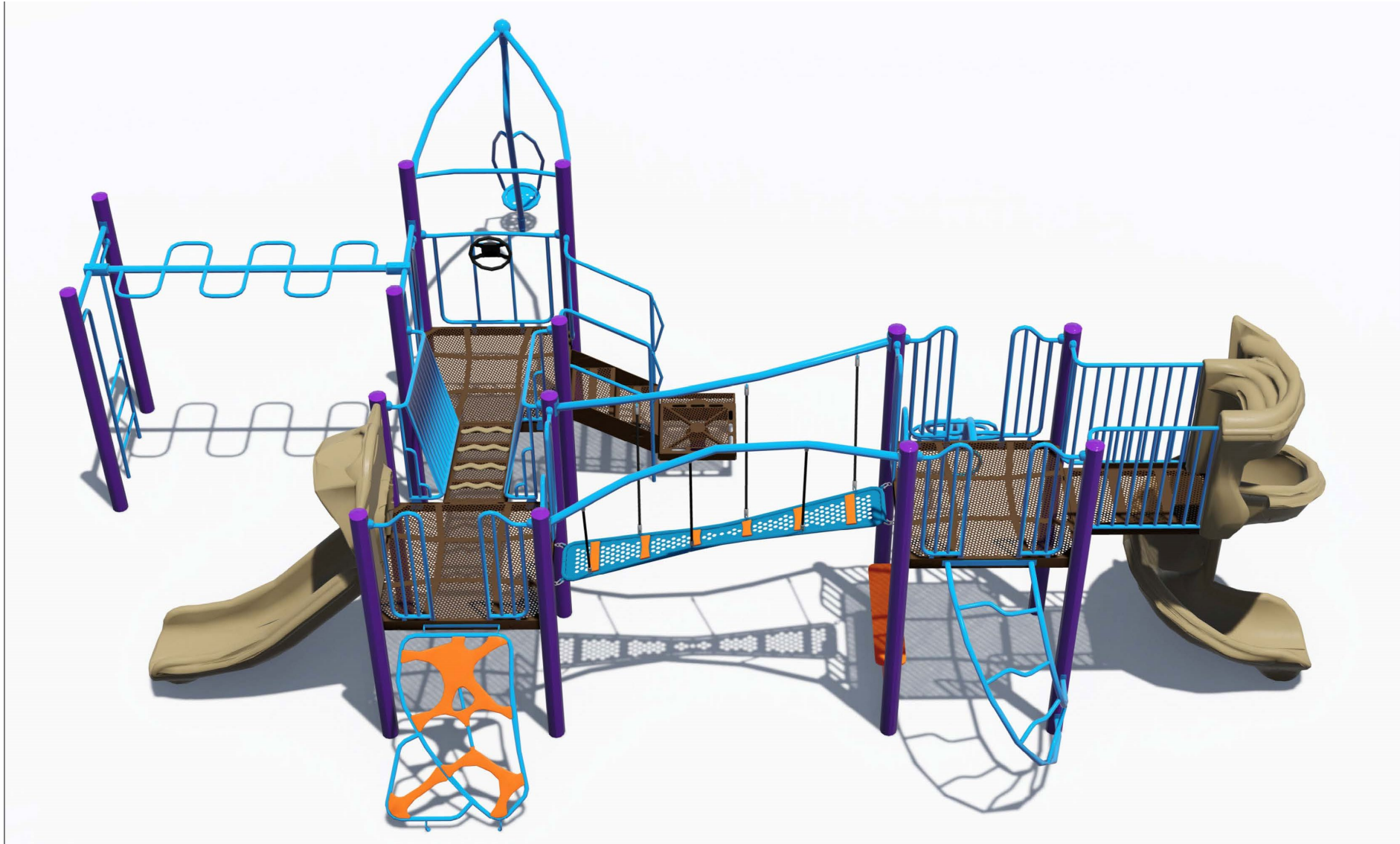
SHEET NUMBER: **1 of 1**

ORCHARD RIDGE PARK – ADJACENT PLAYGROUNDS



- Intended age group of play structure: 5-12, with opportunities for younger, emphasis on accessibility
- Safety surfacing: Wood mulch
- Colors: Purple posts, light blue railings, and orange accents
- Playground Manufacturer: GameTime
 - Specific requests include: Nature play options, activities for smaller children, music features, a spiral slide, and an accessible swing.

ORCHARD RIDGE PARK – REPLACEMENT EQUIPMENT OPTION 1



ORCHARD RIDGE PARK – REPLACEMENT EQUIPMENT OPTION 1

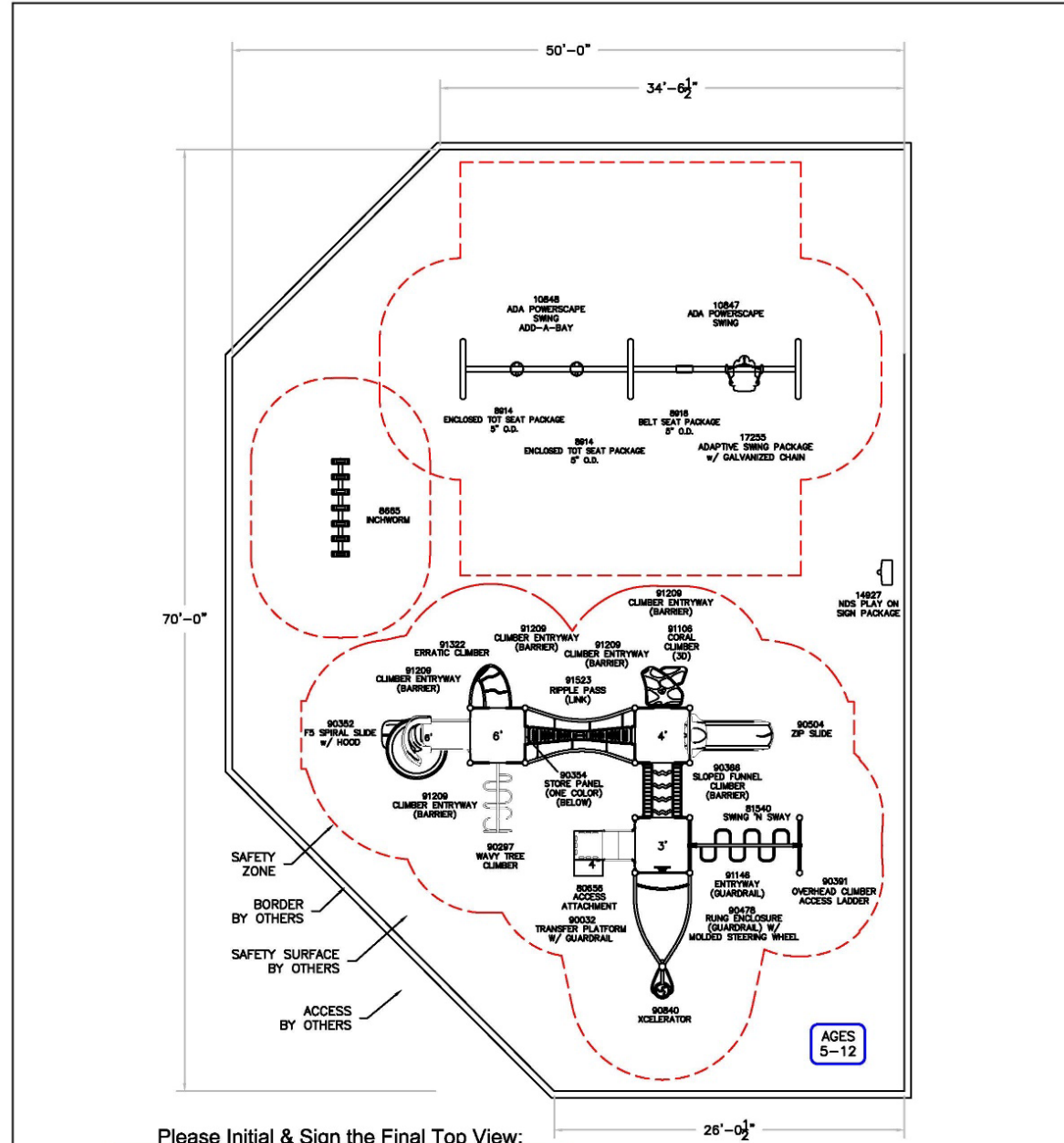


ORCHARD RIDGE PARK – REPLACEMENT EQUIPMENT OPTION 1



ORCHARD RIDGE PARK – REPLACEMENT EQUIPMENT OPTION 1

Sample layout only, final layout will be adjusted to respond to actual conditions in the park.

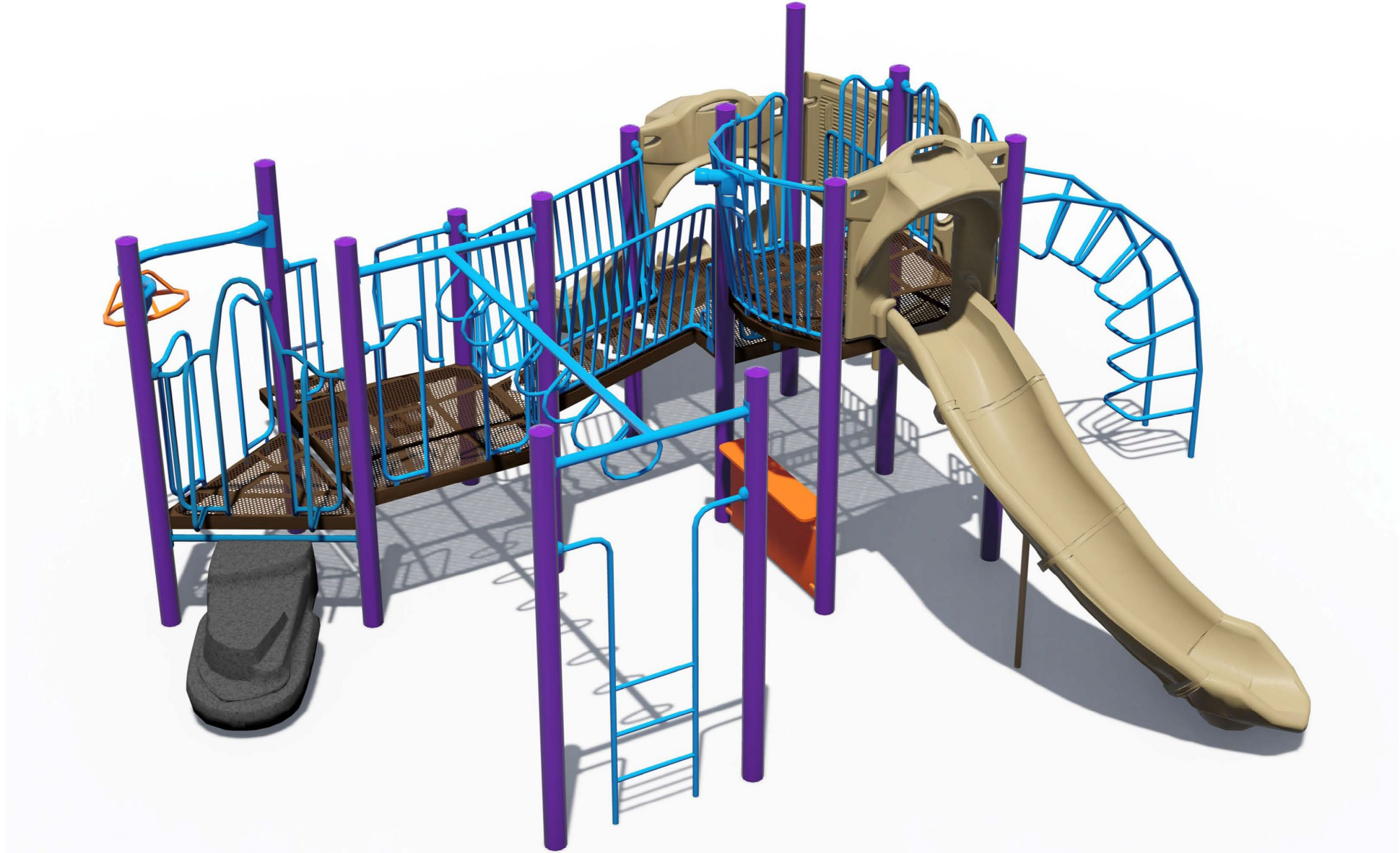


ORCHARD RIDGE PARK – REPLACEMENT EQUIPMENT OPTION 2



The graphic is incorrect here-
this slide will only be a single
(not double as shown).

ORCHARD RIDGE PARK – REPLACEMENT EQUIPMENT OPTION 2



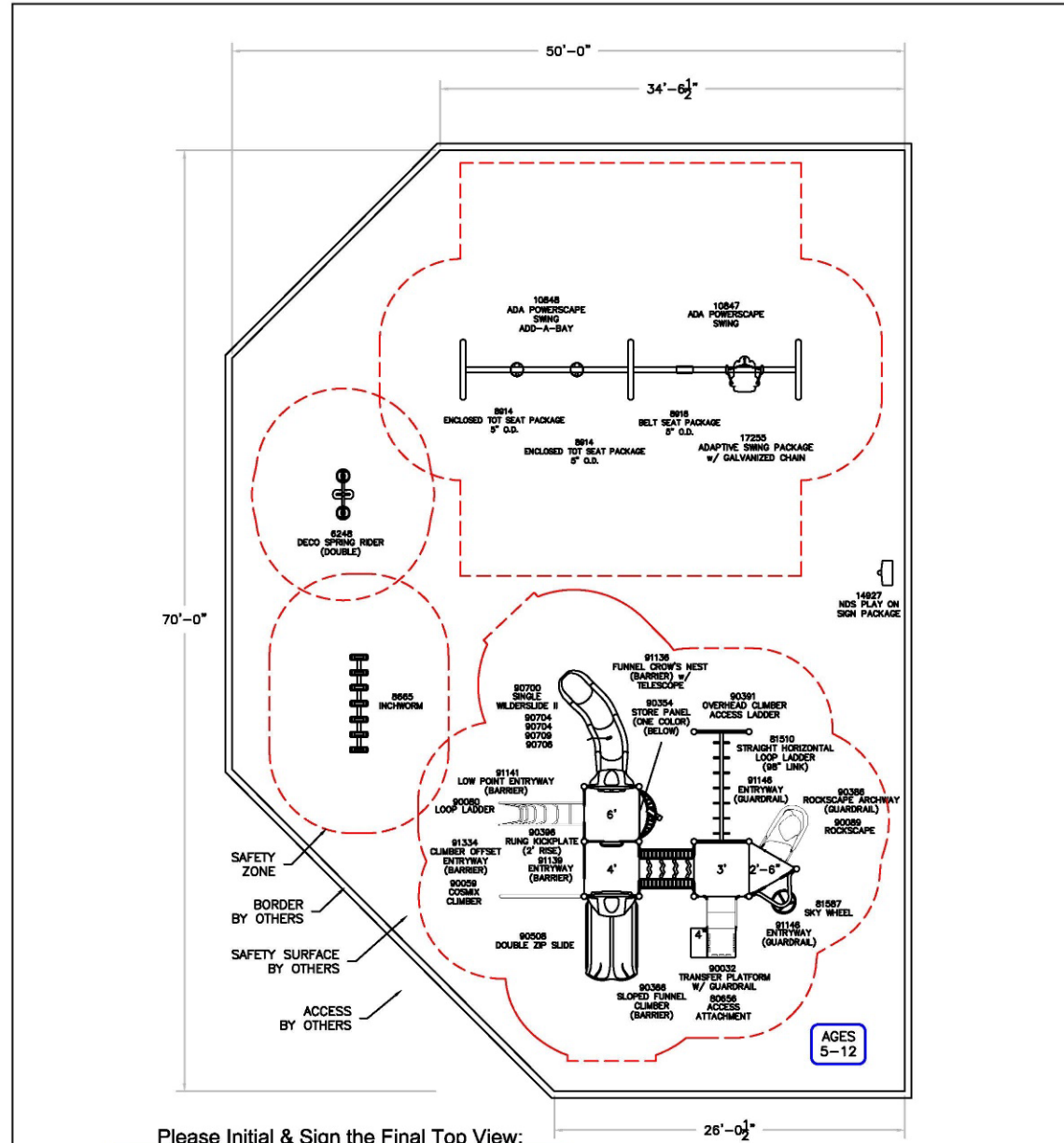
ORCHARD RIDGE PARK – REPLACEMENT EQUIPMENT OPTION 2



Slide is single, not double as shown!

ORCHARD RIDGE PARK – REPLACEMENT EQUIPMENT OPTION 2

Sample layout only, final layout will be adjusted to respond to actual conditions in the park.

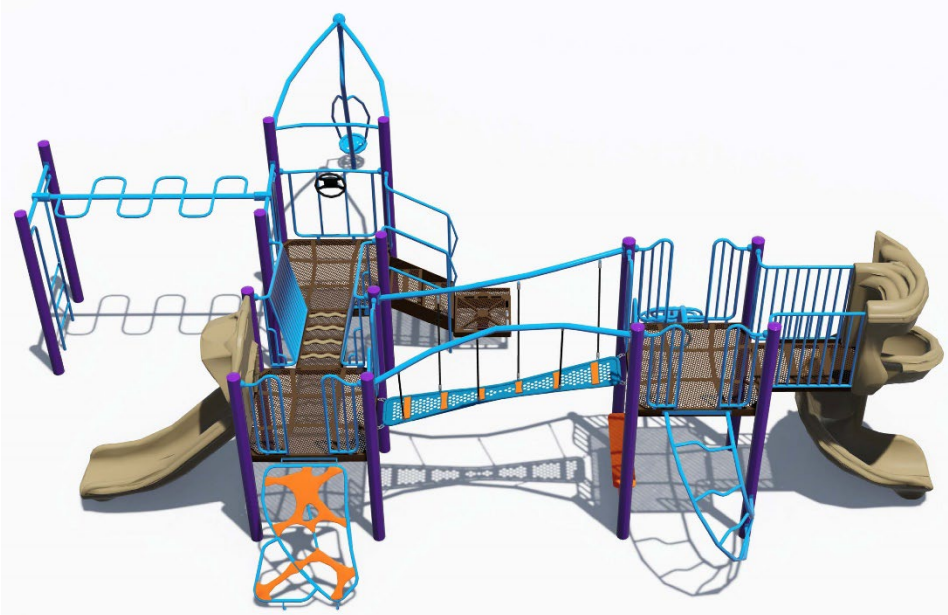


Please Initial & Sign the Final Top View:

ORCHARD RIDGE PARK – REPLACEMENT EQUIPMENT OPTIONS

Option 1

- F5 Spiral Slide
- Inchworm balance beam stepper
- Shop window
- 3 climbing features
- Xcelerator spinner
- Swing 'n Sway monkey bars
- Steering wheel
- Ripple Pass bridge



Option 2

- Wilderslide II
- Inchworm balance beam stepper
- Shop window
- 2 climbing features
- Sky Wheel spinner
- Loop Ladder monkey bars
- Telescope
- Deco Double Spring Rider
- Rockscape stepper



City of Madison Playground Options Nature Nooks



Still planning on incorporating some nature play elements.* Previous (2) options were created with reduced budget to allow for nature element installation.

*Unless neighbors decide otherwise. We can always add more to the main structure (such as a music element), or choose a more expensive spring rider.



ORCHARD RIDGE PARK – SPRING RIDER OPTIONS



Buck-A-Bout (about 2x the cost of other options, we would have to reduce budget in another area)



Dinosaur Adventure Mate (also comes in green)



Deco Spring Rider (many colors available, shown on option 2)



Race Car (also comes in police, fire, and desert commando)



Jumbo Flyer (only 1 color)



Ashiko Drum



Tot's Bongos (can be mounted high or low for various ages)



Babble Flower



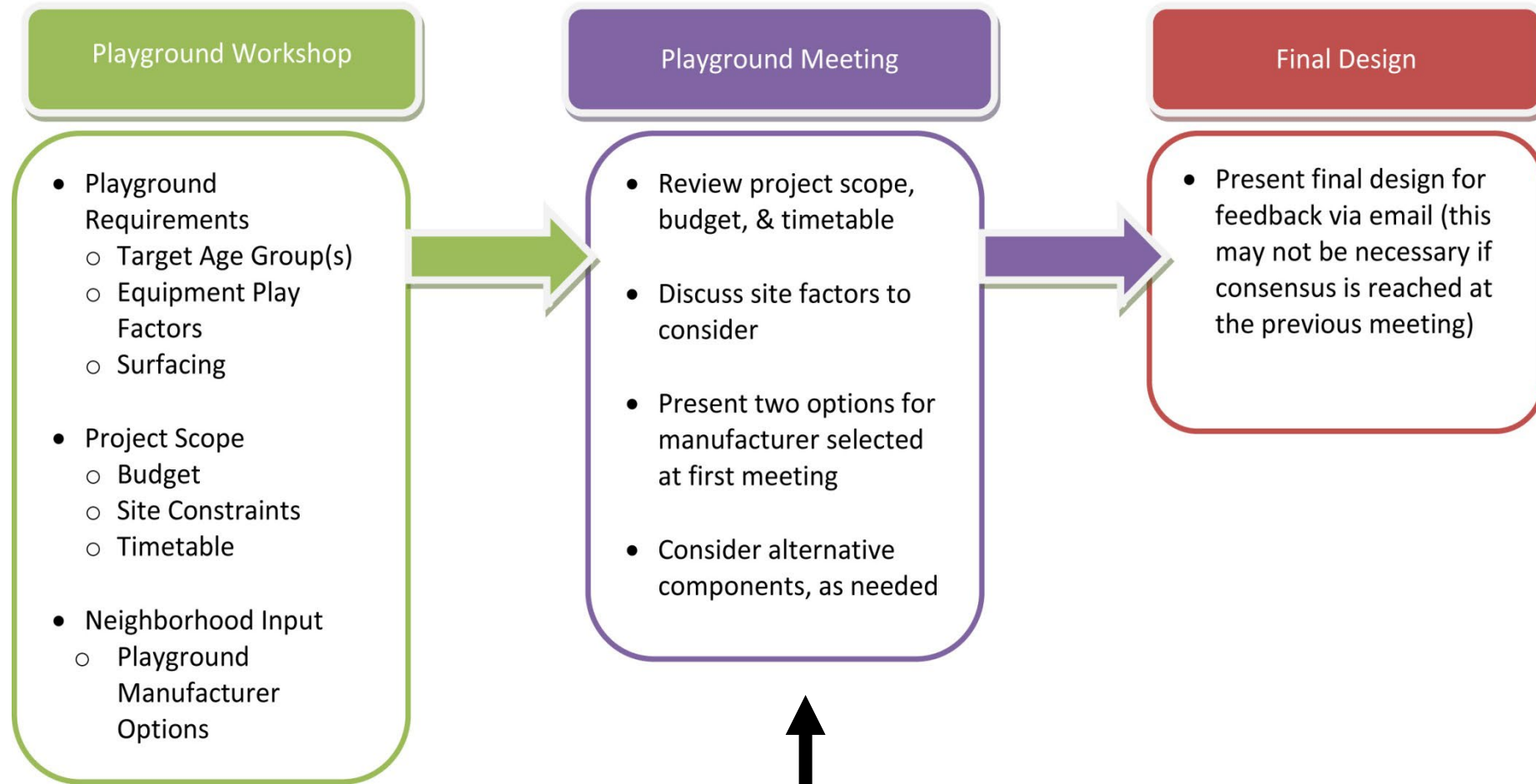
Ashiko & Djembe Drums



Beat Club (will require more significant swap-out to meet budget)

Still interested in a music element? Will require swapping out a proposed element so we can meet our equipment budget.

ORCHARD RIDGE PARK – NEXT STEPS



We are here!

Thank you!

**Additional information related to this project is posted on the Parks Project Portal, here:
<https://www.cityofmadison.com/parks/projects/orchard-ridge-park-playground-improvements>**

**Contact Sarah Close, project manager, with additional questions or comments.
(608) 263-6850 or sclose@cityofmadison.com**



COUNTRY GROVE PARK PLAYGROUND

