



# Vilas Park Master Plan

Interagency Meeting #2  
October 23, 2019



# Vilas Park Master Plan – Interagency Meeting #2

## Project Schedule – 15 Month Process

PROJECT SCHEDULE - VILAS PARK MASTER PLAN



Kick-Off Meeting



Progress Meetings with  
City Staff



City Agency Meetings (DAT  
- Engineering, Planning,  
Zoning, etc.)



State Agency Meetings



Public Meetings



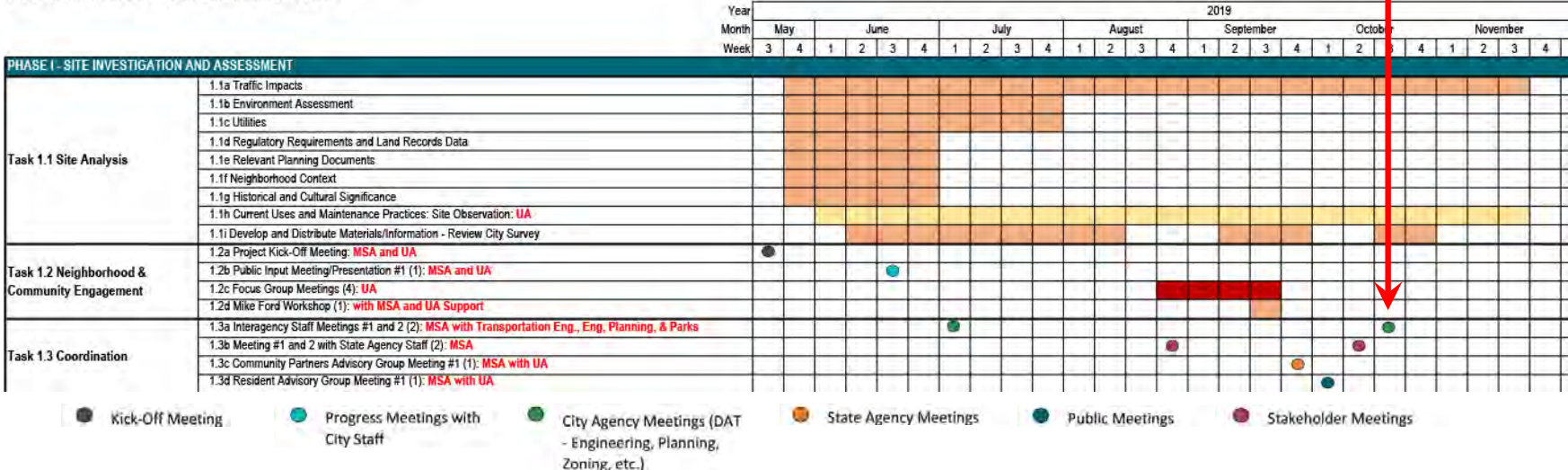
Stakeholder Meetings

# Vilas Park Master Plan – Interagency Meeting #2

## Phase I – June to November 2019

- Phase I – Site Investigation and Assessment

PROJECT SCHEDULE - VILAS PARK MASTER PLAN



Goal – Collect ideas, comments, and approaches to future Park development

# Vilas Park Master Plan – Interagency Meeting #2

## History



Vilas Donation in 1904

25 Acres of Land  
40 Acres of Bog

Park Development  
\$18,000  
(\$500,000 in 2019)

2 Bridges  
\$5,000  
(\$150,000 in 2019)

Henry Vilas Zoo 1911  
28 acres

# Vilas Park Master Plan – Interagency Meeting #2

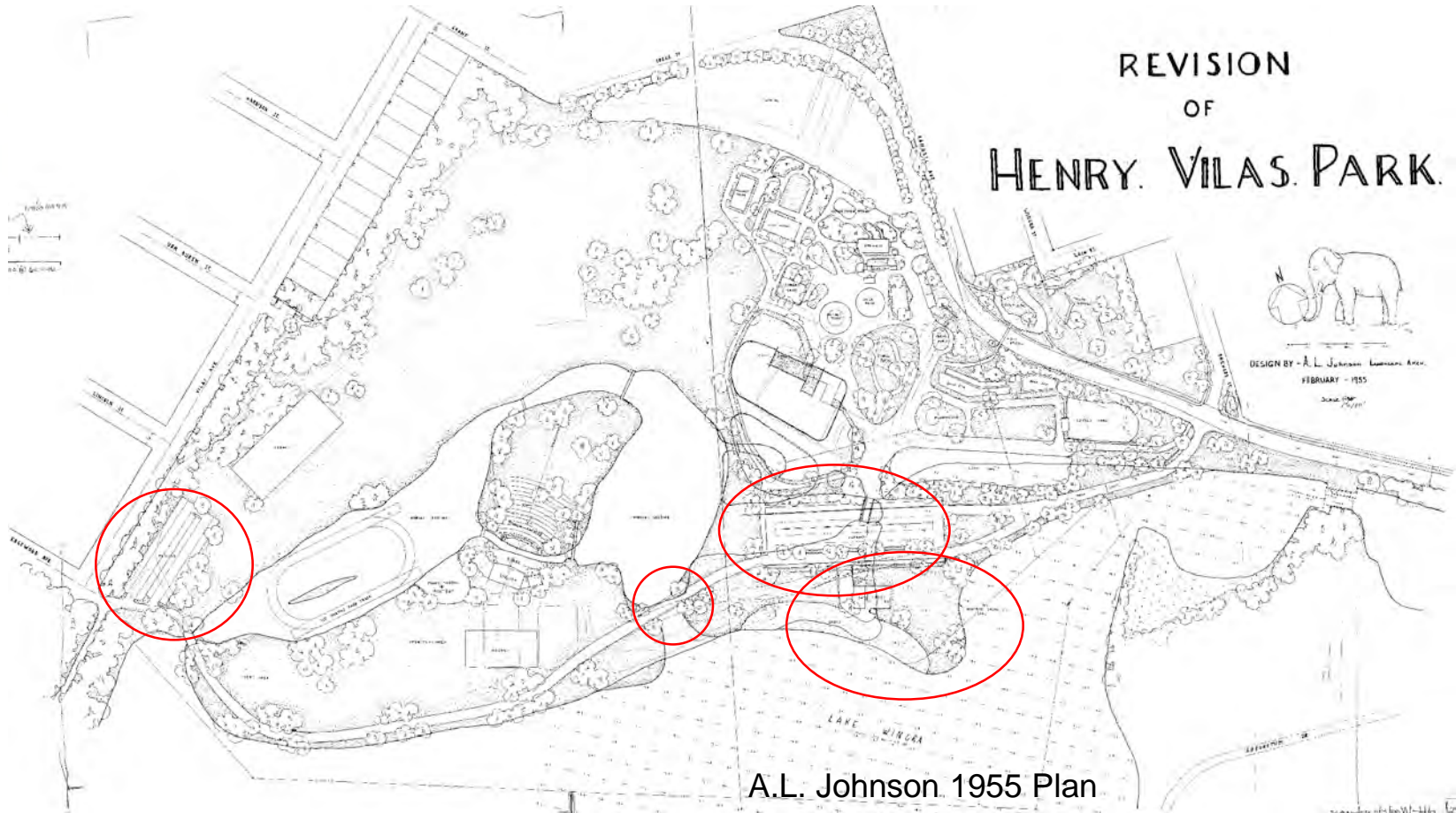
## History



1937 Aerial Photograph

# Vilas Park Master Plan – Interagency Meeting #2

## History



# Vilas Park Master Plan – Interagency Meeting #2

## History



1955 Aerial Photograph

# Vilas Park Master Plan – Interagency Meeting #2

## History



1957 Aerial Photograph



# Vilas Park Master Plan – Interagency Meeting #2

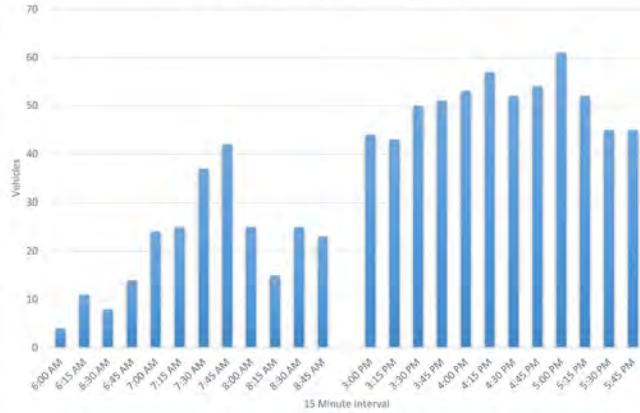
## History



# Vilas Park Master Plan – Interagency Meeting #2

## Phase I – Traffic Impacts

Vilas Park Drive Pass Through Trips



Vilas Park Drive Trip Difference



Time	Edgewood Ave & Vilas Park Dr	Orchard St & Vilas Park Dr	Estimated Pass Through Trips	Trip Difference	Estimated Pass Through Trip %
AM	EB Vehicles Enter	EB Vehicles Exit	EB Vehicles	Vehicles	
6:00 AM	4	4	4	0	100%
6:15 AM	11	11	11	0	100%
6:30 AM	11	8	8	3	73%
6:45 AM	14	15	14	-1	100%
7:00 AM	24	24	24	0	100%
7:15 AM	26	25	25	1	96%
7:30 AM	39	37	37	2	95%
7:45 AM	48	42	42	6	88%
8:00 AM	25	27	25	-2	100%
8:15 AM	19	15	15	4	79%
8:30 AM	26	25	25	1	96%
8:45 AM	23	24	23	-1	100%
PM					
3:00 PM	44	51	44	-7	100%
3:15 PM	43	57	43	-14	100%
3:30 PM	50	66	50	-16	100%
3:45 PM	51	58	51	-7	100%
4:00 PM	53	62	53	-9	100%
4:15 PM	57	70	57	-13	100%
4:30 PM	52	68	52	-16	100%
4:45 PM	57	54	54	3	95%
5:00 PM	61	66	61	-5	100%
5:15 PM	57	52	52	5	91%
5:30 PM	53	45	45	8	85%
5:45 PM	47	45	45	2	96%

- Notes:
- Intersection Counts Completed 4/24/19
  - Trips include vehicles only, does not account for bikes on road
  - Assume WB vehicles entering/exiting Vilas park are staying longer than 15 minutes
    - Occupants are either parking & walking to Edgewood, or parking & using Vilas Park/Zoo

# Vilas Park Master Plan – Interagency Meeting #2

## Phase I – Traffic Impacts

Vilas Park Network Peak Hour Calcs  
June 29, 2019 Weekend Counts

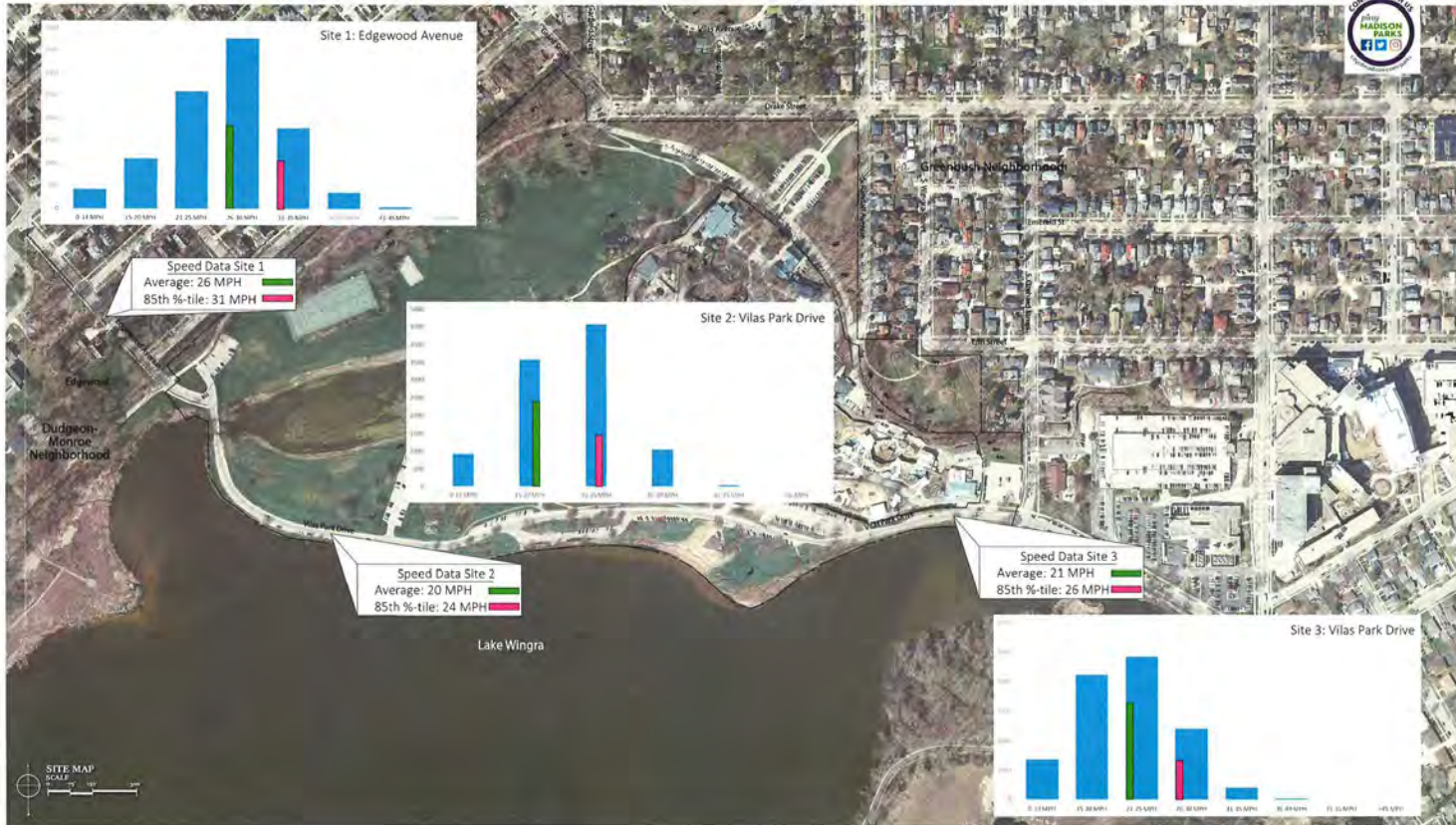
	Edgewood Ave & Multi-Use Path	Drake St & Grant St	Randall Ave & Drake St	Orchard St & Vilas Park Dr	Vilas Park Dr & Wingra Dr / Mills St	Network Hourly Totals
<b>Weekday Hourly Totals*</b>						
6:00 AM	52	48	73	63	200	436
6:15 AM	62	52	90	72	202	478
6:30 AM	70	71	108	81	230	560
6:45 AM	60	75	119	76	220	550
7:00 AM	48	83	131	61	186	509
7:15 AM	58	106	148	71	224	607
7:30 AM	62	120	178	98	234	692
7:45 AM	59	137	193	112	225	726
8:00 AM	77	156	220	141	237	831
8:15 AM	74	173	263	156	238	907
8:30 AM	95	193	301	161	246	996
8:45 AM	110	198	344	170	276	1098
9:00 AM	106	246	411	185	299	1227
9:15 AM						
9:30 AM						
9:45 AM						
10:00 AM	170	420	558	225	382	1755
10:15 AM	177	420	555	221	363	1736
10:30 AM	167	409	539	228	384	1727
10:45 AM	150	416	560	229	381	1736
11:00 AM	140	423	575	235	387	1760
11:15 AM	139	450	607	241	407	1844
11:30 AM	143	461	628	261	416	1909
11:45 AM	162	490	641	286	437	2016
12:00 PM	162	484	636	281	425	1988
12:15 PM	160	474	636	301	449	2020
12:30 PM	162	508	668	291	447	2074
12:45 PM	154	480	663	281	437	1995
1:00 PM	167	525	707	275	490	2122
1:15 PM						
1:30 PM						
1:45 PM						
2:00 PM	186	528	616	325	509	2166
2:15 PM	200	491	611	300	509	2107
2:30 PM	181	440	585	285	498	1990
2:45 PM	176	418	581	280	478	1919
3:00 PM	169	402	590	281	452	1844
3:15 PM	161	401	536	274	468	1842
3:30 PM	139	415	557	284	467	1842
3:45 PM	135	380	488	262	418	1693
4:00 PM	126	373	465	259	398	1621
4:15 PM	120	352	454	251	394	1571
4:30 PM	120	327	403	240	365	1455
4:45 PM	108	295	395	222	354	1374
5:00 PM	97	276	358	216	356	1303
5:15 PM						
5:30 PM						
5:45 PM						

Network Peak  
Intersection Peak Hour

\*Note, volumes in cells are HOURLY volumes, not 15-minute volumes

# Vilas Park Master Plan – Interagency Meeting #2

## Phase I – Traffic Impacts



2019 Weekday Speed Study Results  
Monday, August 12, 2019 - Friday, August 16, 2019

TRAFFIC  
STATION

# Vilas Park Master Plan – Interagency Meeting #2

## Phase I – Site Observations and Parking Counts



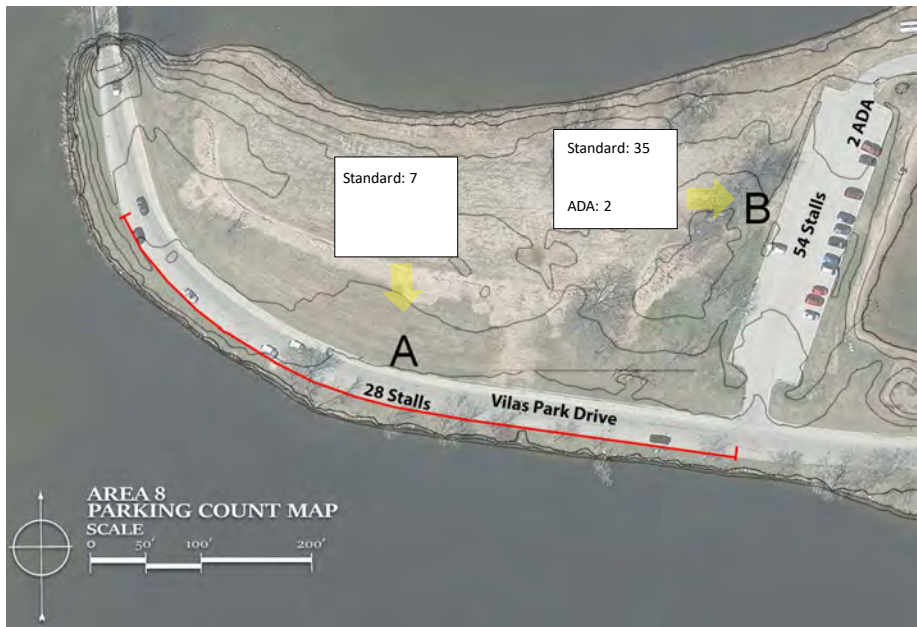
# Vilas Park Master Plan – Interagency Meeting #2

## Phase I – Site Observations and Parking Counts

### Engagement Overview (through 7/11/19)

- 5 parking counts
- 6 observations
- 14 intercept interviews

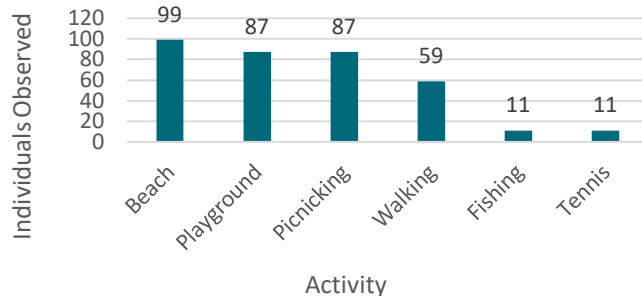
### Parking Counts



### Common Input Themes

- Pedestrian and bicyclist safety
- Less through traffic on Vilas Park Dr.
- Playground enhancements
- Maintain amount of green space
- Lake & lagoon cleanliness/ecological health
- Access for dogs (or dog-friendly area)
- More benches and picnic tables
- More Park Rangers – enforcement of park rules

### Top Activities at Vilas Park



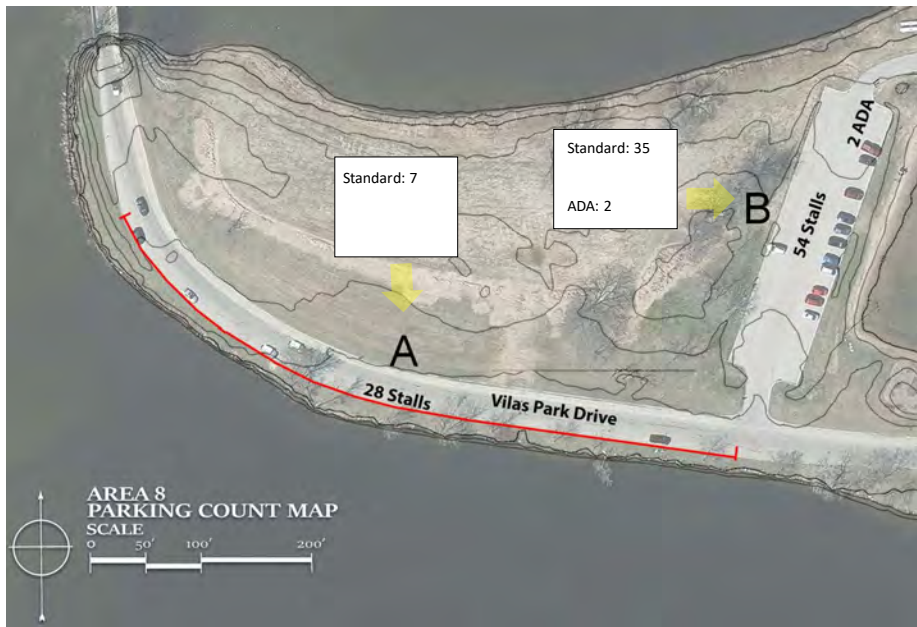
# Vilas Park Master Plan – Interagency Meeting #2

## Phase I – Site Observations and Parking Counts

### Engagement Overview (through 7/11/19)

- 5 parking counts
- 6 observations
- 14 intercept interviews

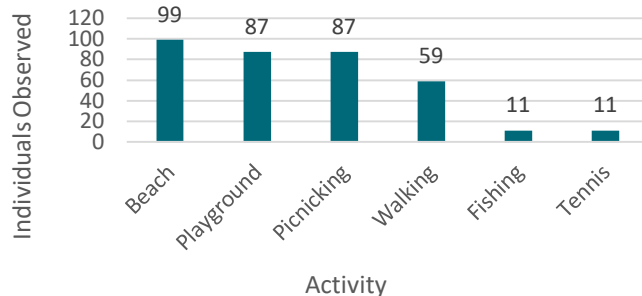
### Parking Counts



### Common Input Themes

- Pedestrian and bicyclist safety
- Less through traffic on Vilas Park Dr.
- Playground enhancements
- Maintain amount of green space
- Lake & lagoon cleanliness/ecological health
- Access for dogs (or dog-friendly area)
- More benches and picnic tables
- More Park Rangers – enforcement of park rules

### Top Activities at Vilas Park



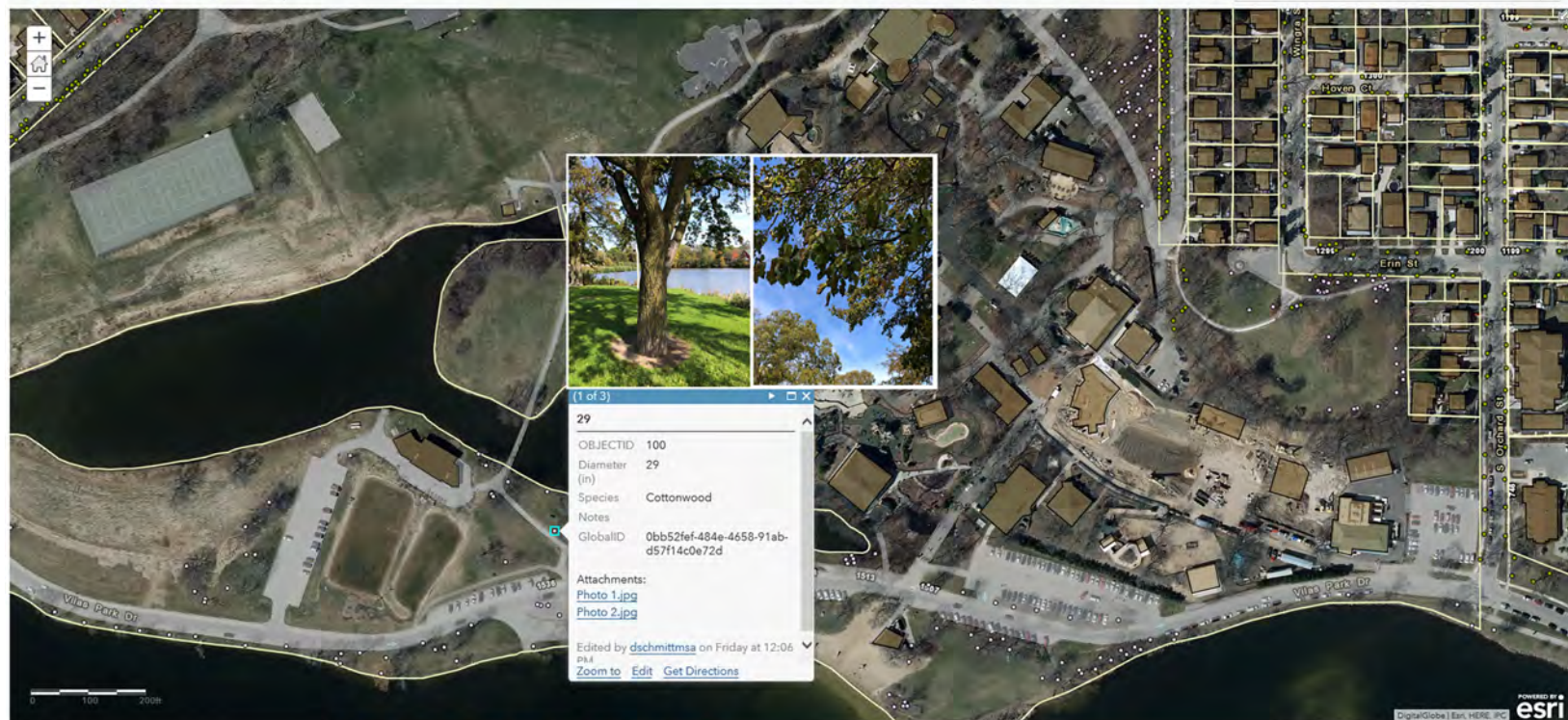
# Vilas Park Master Plan – Interagency Meeting #2

## Tree Survey

Home ▾ Vilas Park Tree Inventory

Details Add ▾ Edit Basemap

Save Share Print ▾ Directions Measure Bookmarks Find address or place




**29**

OBJECTID: 100  
Diameter (in): 29  
Species: Cottonwood  
Notes:  
GlobalID: 0bb52fef-484e-4658-91ab-d57f14c0e72d

Attachments:  
[Photo 1.jpg](#)  
[Photo 2.jpg](#)

Edited by [dschmittsa](#) on Friday at 12:06 PM  
[Zoom to](#) [Edit](#) [Get Directions](#)


0 100 200

Powered by  esri

DigitalGlobe | Est. HERE | ICD

8:34 AM 10/23/2019

Type here to search





# Vilas Park Master Plan – Interagency Meeting #2

## Chronology



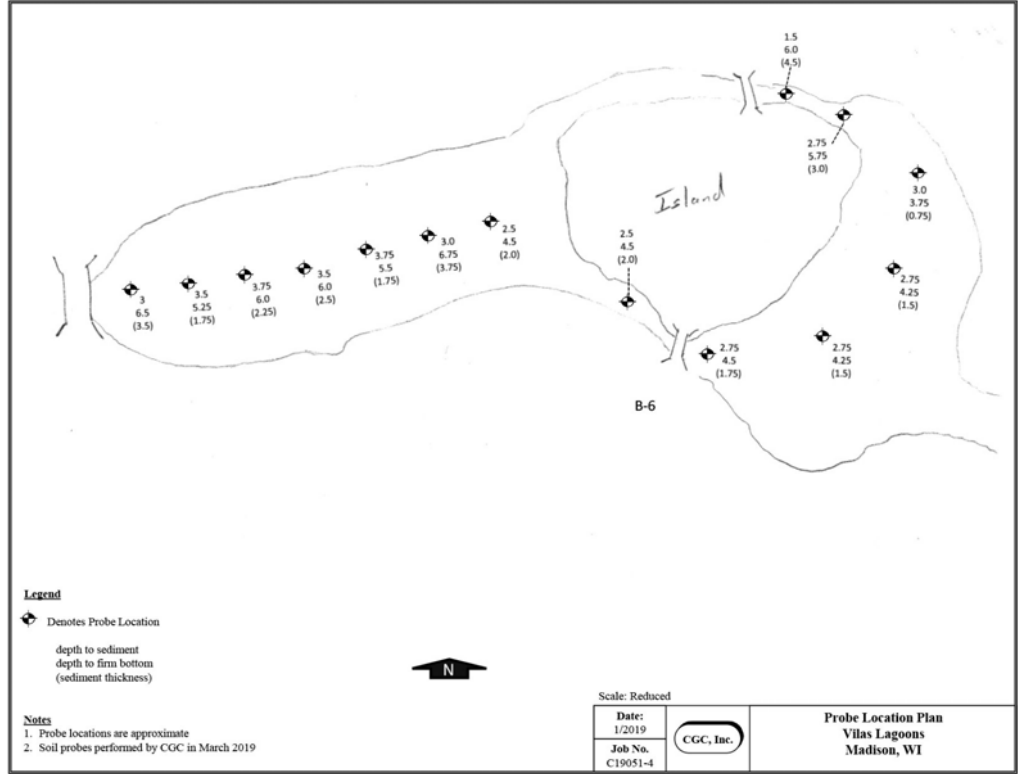
# Vilas Park Master Plan – Interagency Meeting #2

## Draft Master Plan Report

	<b>LOG OF SEDIMENT CORE</b>		Core No. <b>1</b>
	Project <b>Vilas Lagoons</b>		Surface Elevation _____
	Location <b>Madison, WI</b>		Job No. <b>C19051-4</b>
			Sheet <b>I</b> of <b>I</b>
2921 FERRY STREET, MADISON, WIS. 53713 (608) 288-4100, FAX (608) 288-7887			

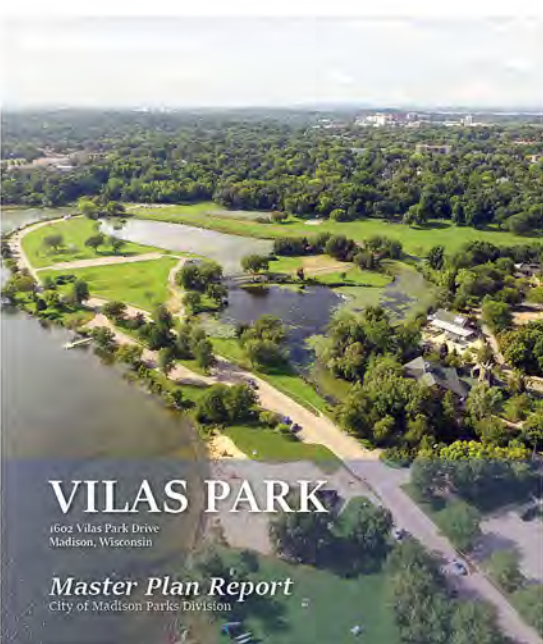
SAMPLE				VISUAL CLASSIFICATION and Remarks	SOIL PROPERTIES					
No.	Rec (in.)	Moist	W		Depth (ft)	Electrical Conductivity	W	LL	LI	pH (Ln.)
				0	Ice (15")					
				1.5	Dark Gray Organic SILT (OL)					
				0.75-1.25	Medium Stiff to Stiff, Gray Lean CLAY (CL) Occasional Thin (<1/2") Seams of Silt with Little to Some Clay and Sand Partings					
				1.25-1.5	Dark Gray Organic SILT, Trace Sand, Clay and Shell Fragments (OL)					
					Stiff, Brown to Gray Lean CLAY, Trace Sand (CL)					
				6.75	End Core at 6.75 ft					

<b>WATER LEVEL OBSERVATIONS</b>		<b>GENERAL NOTES</b>	
While Excavating <input checked="" type="checkbox"/>	Upon Completion of Drilling _____	Start <b>3/5/19</b>	End <b>3/5/19</b>
Time After Excavating _____	_____	Driller <b>BSD</b>	Chief <b>MC</b>
Depth to Water _____	_____	Logger <b>DC</b>	Editor <b>ESF</b>
Depth to Cave in _____	_____	Equip. Used: <b>Oversized Split - Barrel</b>	
The stratification lines represent the approximate boundary between soil types and the transition may be gradual.			



# Vilas Park Master Plan – Interagency Meeting #2

## Draft Master Plan Report



**VILAS PARK**  
1602 Vilas Park Drive  
Madison, Wisconsin


*Master Plan Report*  
City of Madison Parks Division

**Board of Park Commissioners**  
September, 2020

**play MADISON PARKS**

organization in Madison's history.<sup>1</sup> From 1894 to 1958, the organization transformed Madison into a city with a wealth of parks, playgrounds, athletic fields, beaches and open space. The MPPDA changed the physical development and environmental character of Madison, and Vilas Park, as the second park in Madison, is part of that legacy. Vilas Park was established on the condition that no fee ever be charged for admission, and with this precedent, the development public parks in the city grew with hundreds of citizens donating small annual gifts to the designation and improvement of public land.

The MPPDA set high aesthetic standards, hiring talented landscape architect O.C. Simonds. The park retains many components of his original design, including the lagoon, small island, large meadow, picnic area, playground, and the organically curving carriage drive around much of the perimeter. The park retains its connection to the Prairie Style in landscape architecture, evidenced by native plant material placed in naturalistic groupings and picturesque views across the water and meadow. The park was designed to connect to other parks and drives in the city, as part of John Nolen's 1911 comprehensive design for Madison's parks. Today this network of parks and greenways that continues to enrich the lives of Madisonians.



*Figure 1. John Nolen's plan for the City of Madison 1910*  
(Wisconsin Historical Society, 100762)

<sup>1</sup> City of Madison Landmarks Commission, *Tenney Park Landmark Nomination*, City of Madison, 1994.

**16** VILAS PARK MASTER PLAN 2020

**play MADISON PARKS**

**CHRONOLOGY**

**Geologic** – The four lakes region was formed by glaciers after their retreat 13,000 years ago. Soon afterwards, indigenous people settled the region.

700 – 1200 AD ca. – American Indians constructed mounds on a ridge overlooking the northeastern edge of Lake Wingra (future intersection of Erie and Wingra Streets). It originally consisted of eleven low (1 to 3 ½ feet) earthen mounds. These included two bird effigies, one linear mound, and eight conical mounds.<sup>1</sup>

The region had a high concentration of effigy mounds, often, but not always associated with burials. Their exact purpose is unknown, but are often in close proximity to water. Most of what was then Vilas Park was a marsh, providing habitat for fish, birds, small game, and wild rice. Indigenous people took advantage of these resources and lived in small villages nearby and migrated from one to another based on the seasonal availability of natural resources.<sup>2</sup>

1830s – When American settlers arrived in the area, the Ho-Chunk Nation called this place home. The name Ho-Chunk comes from the word Hochungra, meaning “People of the Big Voice” or “People of the Sacred Language,” which is how the tribe has referred to itself traditionally. They were forced to move west of the Mississippi River after the Black Hawk conflict of 1832. However, many remained while others filtered back into the area and continued to camp along the lakes into the 1940s.<sup>3</sup>

1894 – The Madison Park and Pleasure Drive Association (MPPDA) incorporated and raised private funds to develop and maintain scenic carriage drives and parks in and around Madison. Over the next 44 years the organization developed popular city parks including Tenney Park, Vilas Park, Brittingham Park, Gleaway Golf Course, and Olia Park.<sup>4</sup>

1899, The Wingra Park neighborhood was the first of Madison's modern suburbs to be created in response to residents' desires to escape the increasingly crowded conditions on the Isthmus. The 106-acre farm purchased for the neighborhood was a largely open, well-drained property that adjoined the western edge of the city. Sales of the lots were slow at first, stalled by a slow national economy and lack of street car service.<sup>5</sup>

<sup>1</sup> *Vilas Park Mound Group*, National Register of Historic Places Registration, 1991.  
<sup>2</sup> Steven Lintner, “Where lakes were home to dense and most varied native mounds,” *Wisconsin State Journal*, August 1, 2018. Accessed 8/7/2019, madison.com/wp/wp-content/uploads/2018/08/where-lakes-were-home-to-dense-and-most-varied-native-1  
<sup>3</sup> *History of Madison, Wis.* Accessed 8/7/2019, www.historyofmadison.org/Madison%20History/madisonpast  
<sup>4</sup> *History of the Madison Park Foundation*, Accessed 8/7/2019, madisonparkfoundation.org  
<sup>5</sup> *City of Madison, Neighborhood Profiles*, Accessed 8/7/2019, www.cityofmadison.com/spcd/planning/national-registry-of-historic-places/1602

**17** VILAS PARK MASTER PLAN 2020

# Vilas Park Master Plan – Interagency Meeting #2

## Base Map

