

# Glenway Golf Park

Public Information Meeting

April 29, 2021

# Task Force on Municipal Golf

- ▶ Task Force on Municipal Golf in Madison Parks established September 2019 for the following purpose:
  - ▶ “To make recommendations to the Mayor, Common Council, and the Board of Park Commissioners regarding the future of the City’s Municipal Golf Courses.”
- ▶ 9 Member Body: (1 Alder, 1 current/former BPC member, 1 Golf Sub committee member and 6 residents included representation of golfers, parks users, non-golfers, potentially impacted neighbors, and youth resident)
- ▶ Task Force met for a total of 11 meetings, all of which were open to the public
- ▶ Public Engagement sought and encouraged throughout the process with over 4,300 contacts were made including emails, survey, public comment from all meetings, two public engagement meetings attended by 150 people and focus group of 7 golfers.
- ▶ Final Report accepted by Common Council 2020 consisted of 10 recommendations and provided a vision for the future of municipal golf in Madison Parks, including investment into the program through outside sources
  - ▶ Michael and Jocelyn Keiser approached Madison Parks and Madison Parks Foundation with a vision for Glenway that will improve the golf course, park, environment, and community.
    - ▶ The project directly addresses 7 of the 10 recommendations.



# Current Golf Program

## ▶ Current Operational Model

- ▶ The Golf Program is an Enterprise fund
- ▶ The Golf Program must rely fully on revenue generation to fund all expenses and is not supported by the general fund
- ▶ Current use:
  - ▶ Five year average= 15,772 Rounds of golf
  - ▶ Alternate uses limited to winter use/when course is closed to golf for season (ie. sledding, snow shoeing, dog walking, hiking, bird watching). Data is not available for quantity or types of this use.
- ▶ Without support the program has had little to no investment over the past 40 years of operations

## ▶ Capital needs assessments estimates indicate investment needs at Glenway between \$1.7M - \$2.5M to ensure long term sustainability

- ▶ The Keiser's generous donation will be the first capital investment the Golf Enterprise in many years.
  - ▶ The City does not currently have the resources to make these investments otherwise.
  - ▶ Without investment the City had indicated the need to right size the program, including closure of courses





# Vision

- ▶ Upgrade golfing enjoyment:
  - ▶ Incorporate larger playing areas, which allow for missed shots to be less penalized and more forgiving
  - ▶ Diverse teeing grounds to create friendly play for all abilities
  - ▶ Properly sized green complexes to create creativity of putting surfaces and more landing areas for ease of play
- ▶ Improved land management:
  - ▶ Increase of native plantings by 1400%
  - ▶ Provide native habitat to wildlife and insects
  - ▶ Provide tree health planning and replanting in strategic areas
  - ▶ Decrease reliance on water, fertilizer, and pesticides
- ▶ Enhance Park Amenities:
  - ▶ Walking trails easily navigable and connected to main thoroughfares and connections to other areas of the City
  - ▶ Free community putting green for all ages and abilities
  - ▶ Programmable plan to use space for activities such as movie nights, yoga, bird and nature walks, etc.
  - ▶ Create greater connection with the space and sport of golf



# Project Overview

- ▶ Project can serve as a model for Municipal Golf to thrive through sustainable practices for many years to come AND serve to connect more people to the natural resources and promote inclusivity within the sport.
- ▶ Project is redesigning the 9 hole golf course as a 9 hole golf course with a focus on enjoyable golf experience, long-term sustainability and community connection
  - ▶ Green and tee complexes are original construction and in need of rebuild or restoration
  - ▶ Classic design plays to experienced golfer with fast swing speed, less friendly or enjoyable for beginner golfers.
  - ▶ Rebuilding in place is used to solve design, maintenance, aesthetic, and ecological problems that currently exist
  - ▶ Using current landscape features to accentuate ecological and environmental practices for the site
- ▶ Overall scope of work is to reduce future capital investment obligations and update the facility without City or Golf Program direct investment
- ▶ Ecological restoration efforts will substantially increase native plantings to promote biodiversity of flora and fauna, including providing habitat for a variety of wildlife, pollinators, and other insects.
- ▶ Project does NOT include any work on the adjacent cemetery, Glenway Woods or clubhouse and parking lot.





# Team Approach

## ▶ Design Team

- ▶ Group of experienced and highly recognized professionals in golf course architecture and build.
- ▶ Proven track record of incorporating ecological practices to enhance the overall beauty and sustainability of the land by restoring designated areas of turf to native planted habitats.

## ▶ Turf Grass Team

- ▶ Members of the OJ Noer Research Station at UW-Madison with years of experience in turf grass selection and management who will assist the Design Team on turf management matters and to assist Parks staff in developing an Operating and Maintenance Plan that provides quality playing conditions and reduces reliance on resource inputs.

## ▶ Ecology Team

- ▶ Experienced group of ecologists and landscape architects with years of experience as professors, researchers, published authors, and active stewards of the lands are working to assist the Design Team with ecologically based land management planning, based on the Wisconsin Idea, that promotes more natural areas on the property and to assist Parks staff in developing a sustainable land management plan that enhances the environmental benefits (e.g. stormwater retention, pollinator habitat) of the park property.

## ▶ Programming Team

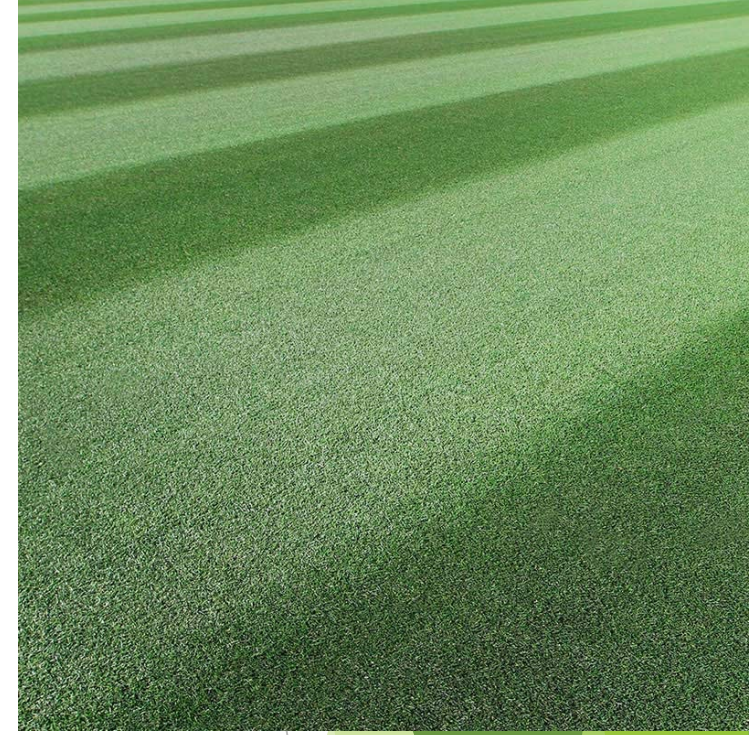
- ▶ Parks Division staff, partner organizations, and interested members of the public working to create diverse and innovative ways to broaden the community connection to the Park and provide equitable and affordable access to the golf course.





# Turf Grass Team

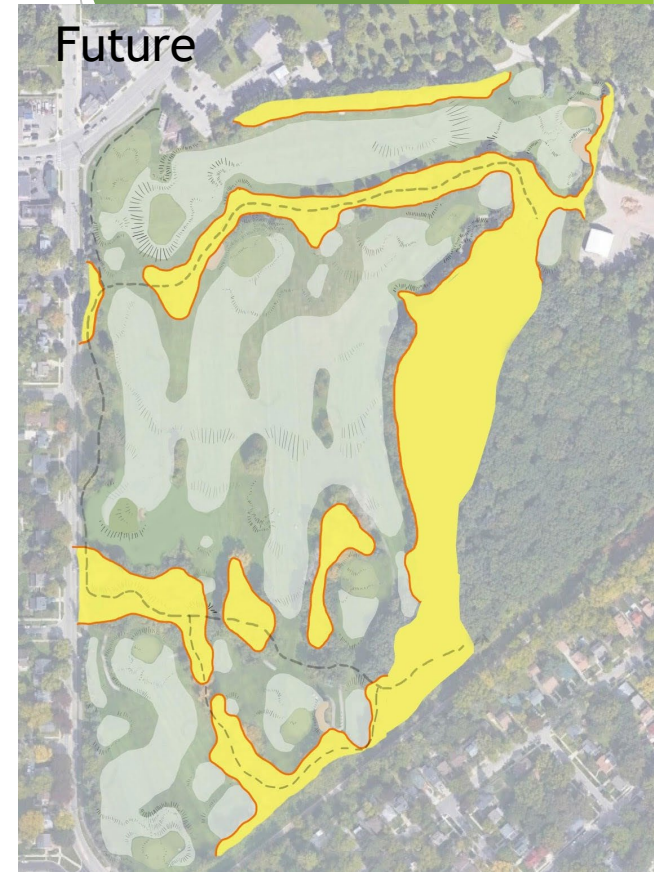
- ▶ Turfgrass selection and treatment will be in collaboration with OJ Noer Research Station at the University of Wisconsin - Madison
- ▶ Focus will be to make plant species selections which will rely less on resource inputs
  - ▶ Reduction in water, energy, fertilizer, and pesticides requirement
- ▶ Construction:
  - ▶ Assist with species selection and soil root zone selection for greens
- ▶ Management Plans:
  - ▶ Develop long-term sustainable Operating and Maintenance plans that reduce inputs and optimize maintenance efficiencies
    - ▶ Reduce water reliance
    - ▶ Reduce long-term pesticide use
    - ▶ Minimize carbon emission by equipment and promote carbon sequestration throughout native habitats.
    - ▶ Optimize fertilizer efficacy





# Ecological Restoration - Native Areas

- ▶ “Re-wilding” of Glenway that restores a areas of turf to habitat unique to Southern Wisconsin landscape
  - ▶ Return to native oak savannahs that once populated 5.5 million acres of local lands
  - ▶ New native prairie and sedge way plantings to allow for native grasses that create habitat for pollinators, wildlife and other living creatures
  - ▶ All native plantings will be chosen based on Wisconsin Idea of species selection by Ecology Team
- ▶ A sedge way or “rain garden” in the lower portion will help reduce runoff to Lake Wingra.
  - ▶ These rain garden’s will aid in collecting sediment and other pollutants and can aid in flooding issues for the area.





# Ecological Restoration - Urban Forest

- ▶ Promote tree health and sustainability by preserving existing healthy trees and developing long-term tree health and planting plan
  - ▶ Work to restore the landscape to its natural state of a hardwood forest containing Oak and Hickory trees
  - ▶ Remove diseased, dead, damaged, and competing trees and plant habitat-appropriate species in strategically positioned areas to ensure long-term health of urban forest
    - ▶ Work to stop the spread of diseases such as oak wilt and oak blight that has been discovered in the area in native species and address conifer decline
    - ▶ Snag trees and allow fallen trees to be incorporated for use as habitats for microorganisms and mammals
- ▶ The plan will require making difficult decisions today in order to ensure the health of the trees for generations to come.





# Programming

- ▶ Grow the game of golf and Glenway Golf Course as a community space for all to enjoy
  - ▶ Continue our relationship with the First Tee of South Central Wisconsin to promote youth golf and learning
  - ▶ Establish a WGA Caddie program at Glenway to create job and scholarship opportunities for local youth
  - ▶ Keeping golf affordable and accessible is a key recommendation from the Task Force
- ▶ Engage with the community over the coming year to provide input on uses of the land through our Programming Team and upcoming events
  - ▶ Work with interested members of the community to create diverse programming on site to create overall care for the lands and allow anyone to experience and utilize the property





# Programming Timelines

- ▶ Develop and implement a survey during construction for potential alternative uses from the community
- ▶ Develop and implement a more refined survey based on response in the fall to gather more direct information regarding uses
- ▶ Seek direct input and engagement from local Neighborhood Associations
- ▶ Host a Public Input Meeting in late fall to present programming plan outline
- ▶ Present programming plan to Board of Park Commissioners in 2021 for goal of adoption by January of 2022.



# Project Timeline

- ▶ Secure All necessary permits late March-early May 2021
  - ▶ City of Madison Engineering & WI Department of Natural Resources- Erosion Control
  - ▶ State Historic Preservation Office (SHPO)—Ground Disturbance
    - ▶ No catalogued/known mound sites within Golf Course proper
    - ▶ Archaeologist has been secured
  - ▶ Stormwater Management Plan: Not required per City Engineering, as no impermeable surfaces are being addressed.
  - ▶ Zoning: Not required as course remains Parks and Recreation
  - ▶ Building Inspection: Not required, as no changes to building
  - ▶ Site Plan Review: Not required, as there are no changes to layout of parking lot or building, project is addressing existing landscape
- ▶ Estimated Project Start Date - May 10, 2021 (after all permits have been received)
- ▶ Estimated Construction Completion - End of June 2021
- ▶ Estimated Grass, Prairie, Tree Plantings - June - July 2021
- ▶ Estimated Reopening Date - May 2022

