

EAGLE TRACE PARK MASTER PLAN

Public Meeting #2
Blackhawk Church
5-20-2019


INTRODUCTION

Sarah Lerner, City of Madison Parks Division

Sarah Close, City of Madison Parks Division



TONIGHT'S GOALS



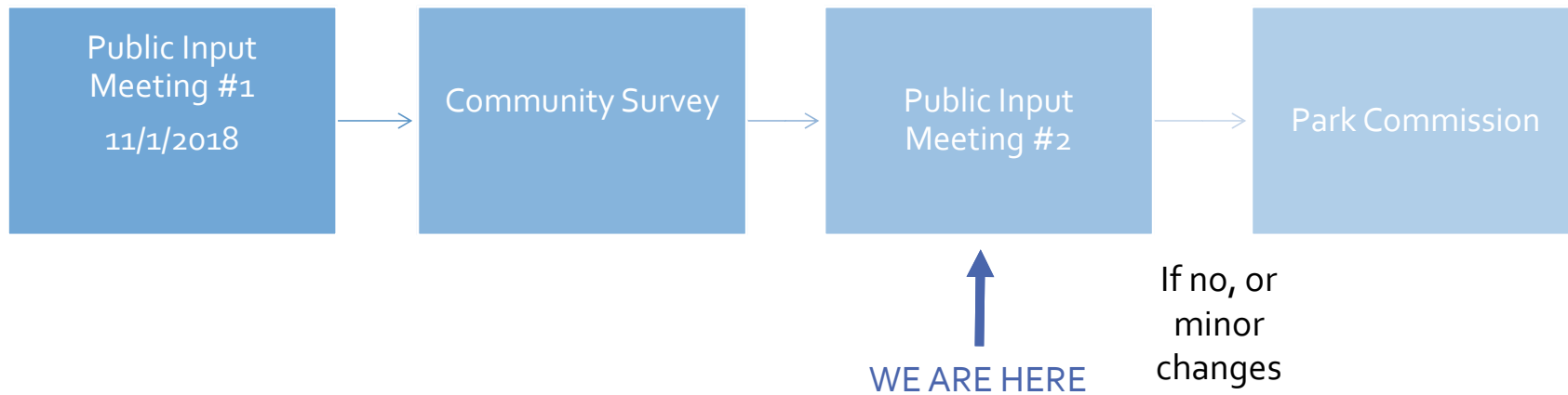
Recap of the previous Eagle Trace Park meeting
-Master planning process and site inventory and analysis

What did we hear?
-Summary of public input
-Design exercise results

Review and discuss master plan concepts

Review and discuss playground concepts

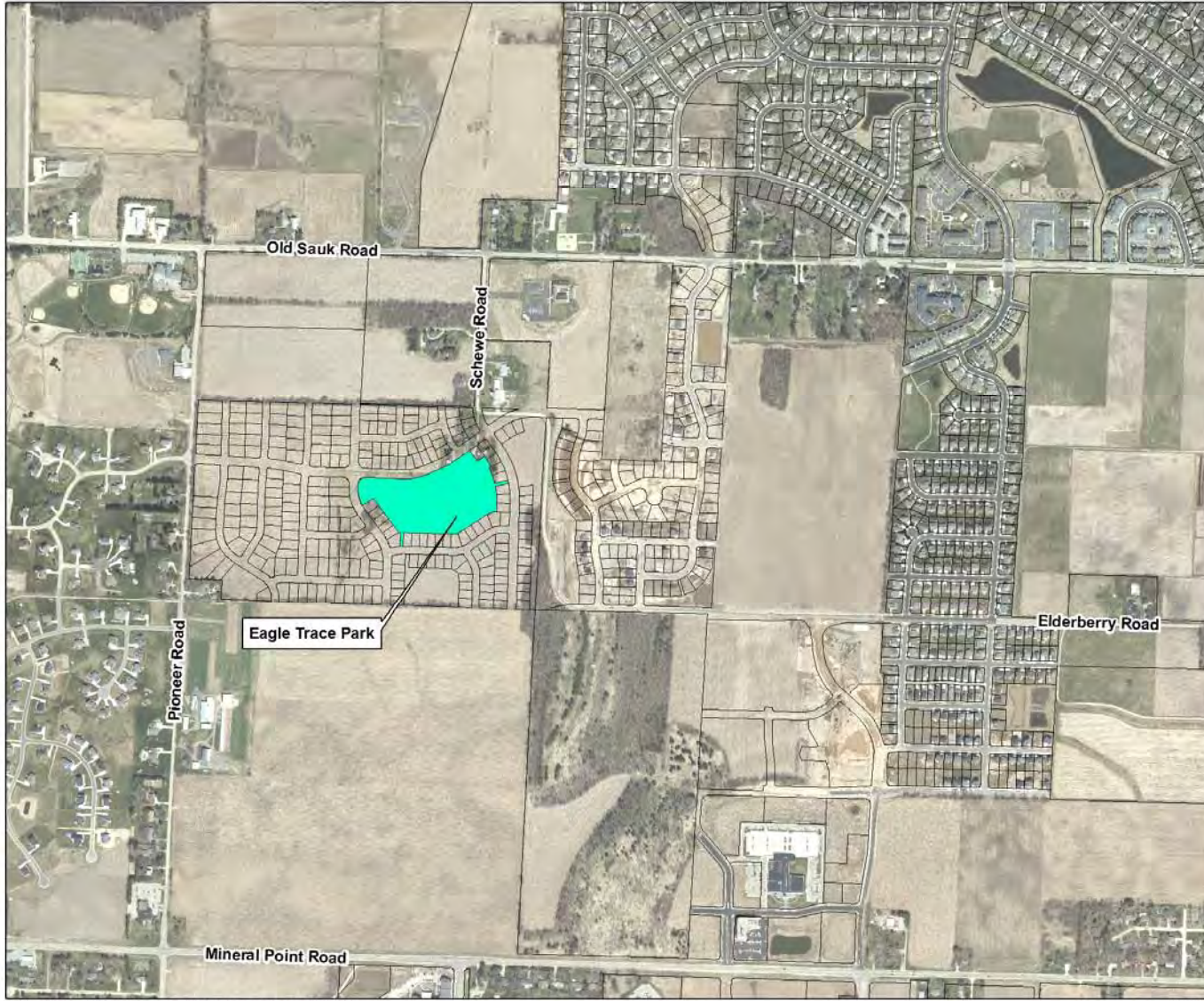
MASTER PLAN PROCESS



EAGLE TRACE PARK

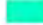

- Location
- Context
- History
- Existing Conditions
 - Aerial
 - Site Photos
 - Topography and Slope
 - Soils
 - Vegetation

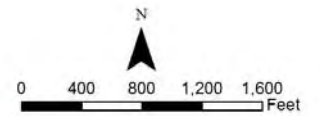
L
O
C
A
T
I
O
N



Park Location

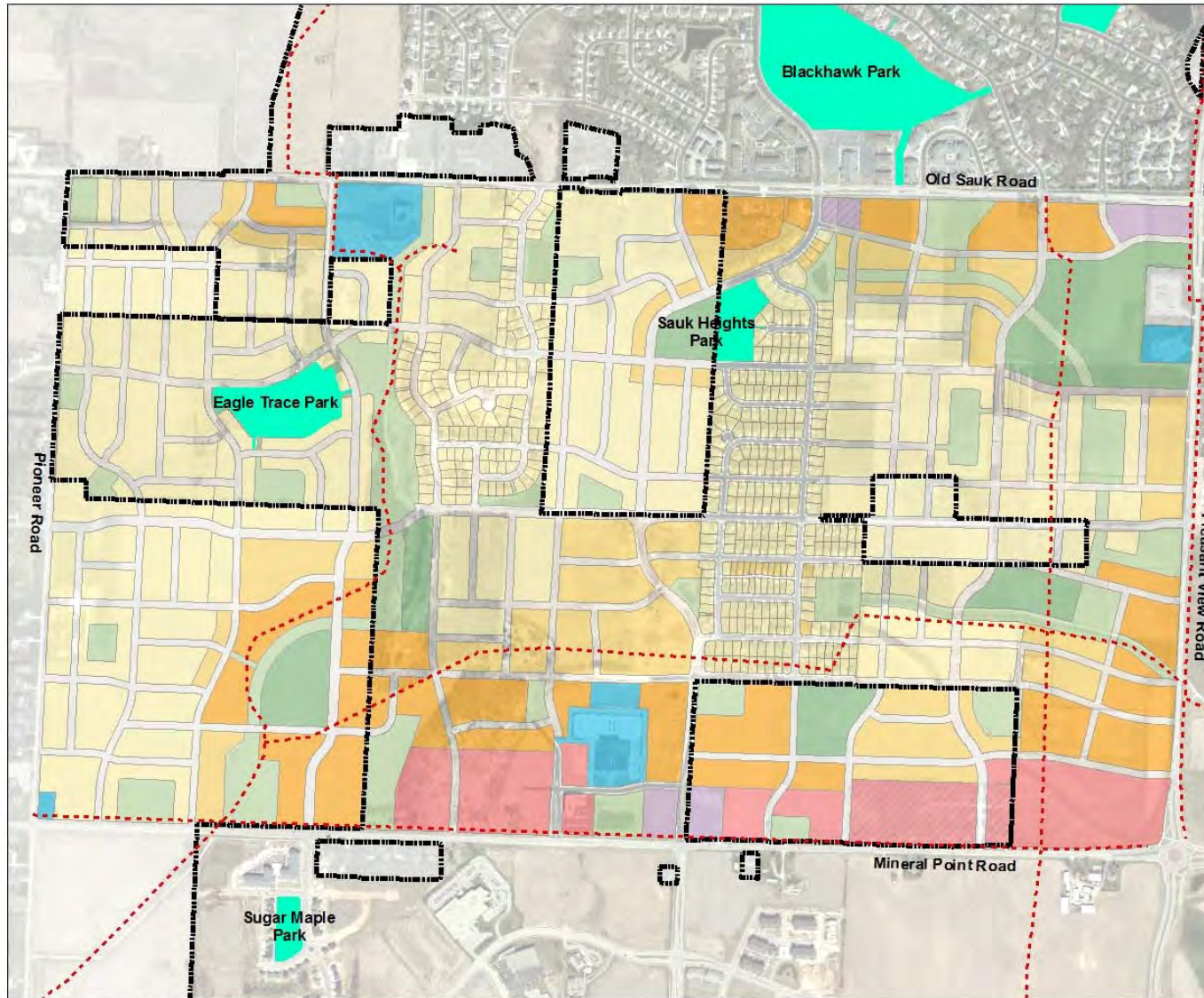
Legend

-  City of Madison Park
-  Ownership Parcels



CONTEXT

- Future Land Development
- Parks within 1 Mile of Eagle Trace



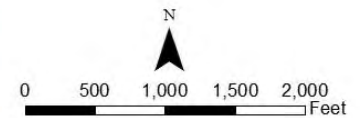
Future Land Development

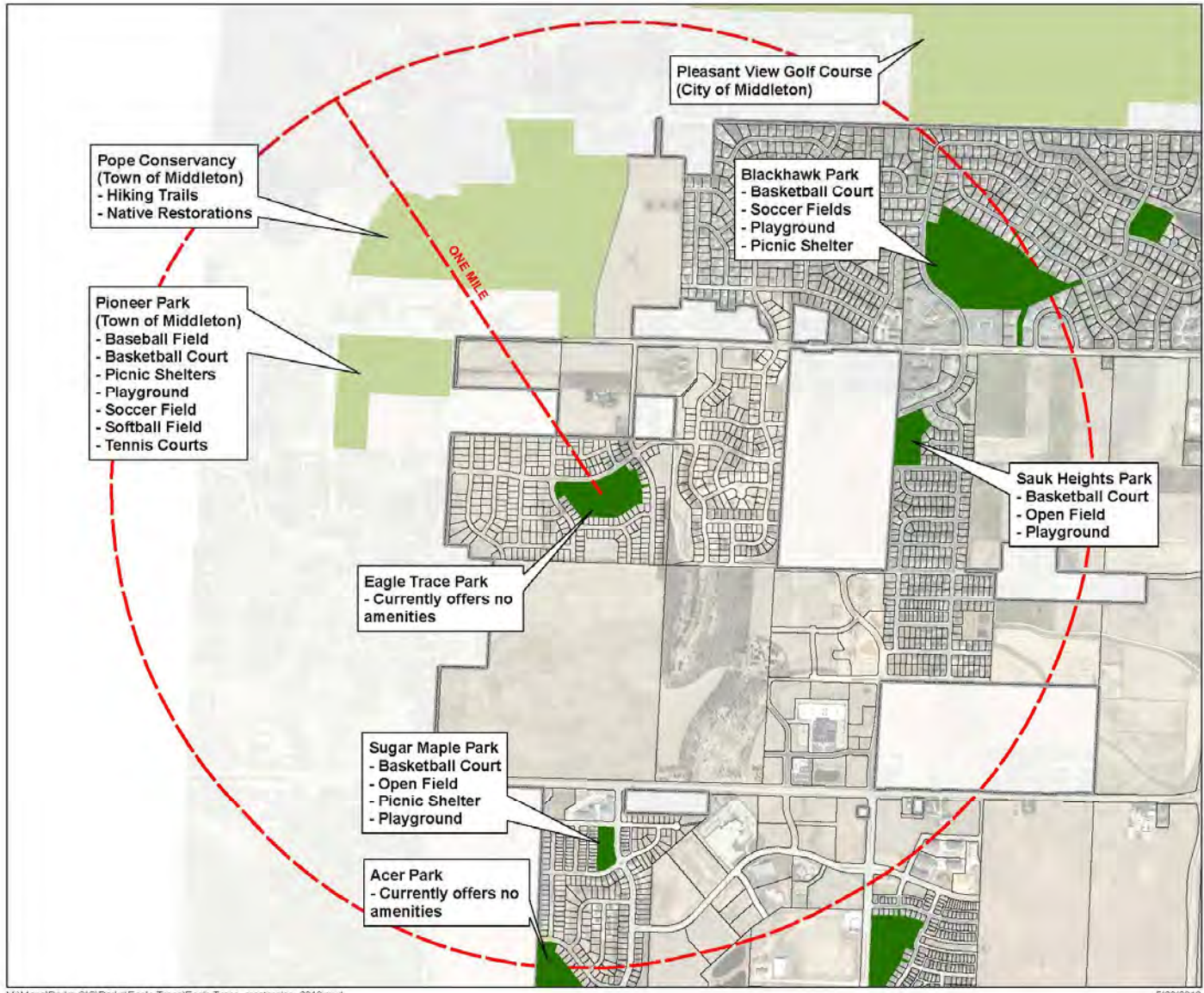
Legend

- City of Madison Park
- City of Madison Boundary
- Ownership Parcels
- MPO Proposed Off Street Bike Path

Land Use

- Employment
- Housing Mix 1
- Housing Mix 2
- Housing Mix 3
- Institution
- Neighborhood Mixed Use
- Overlay Employment
- Overlay Neighborhood Mixed Use
- Park
- Stormwater and Other Open Space
- Utility

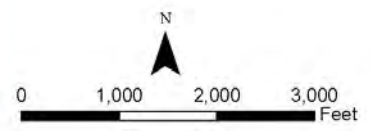




Existing Recreation Inventory

Legend

- City of Madison Park
- Other Public Park Lands
- Ownership Parcels

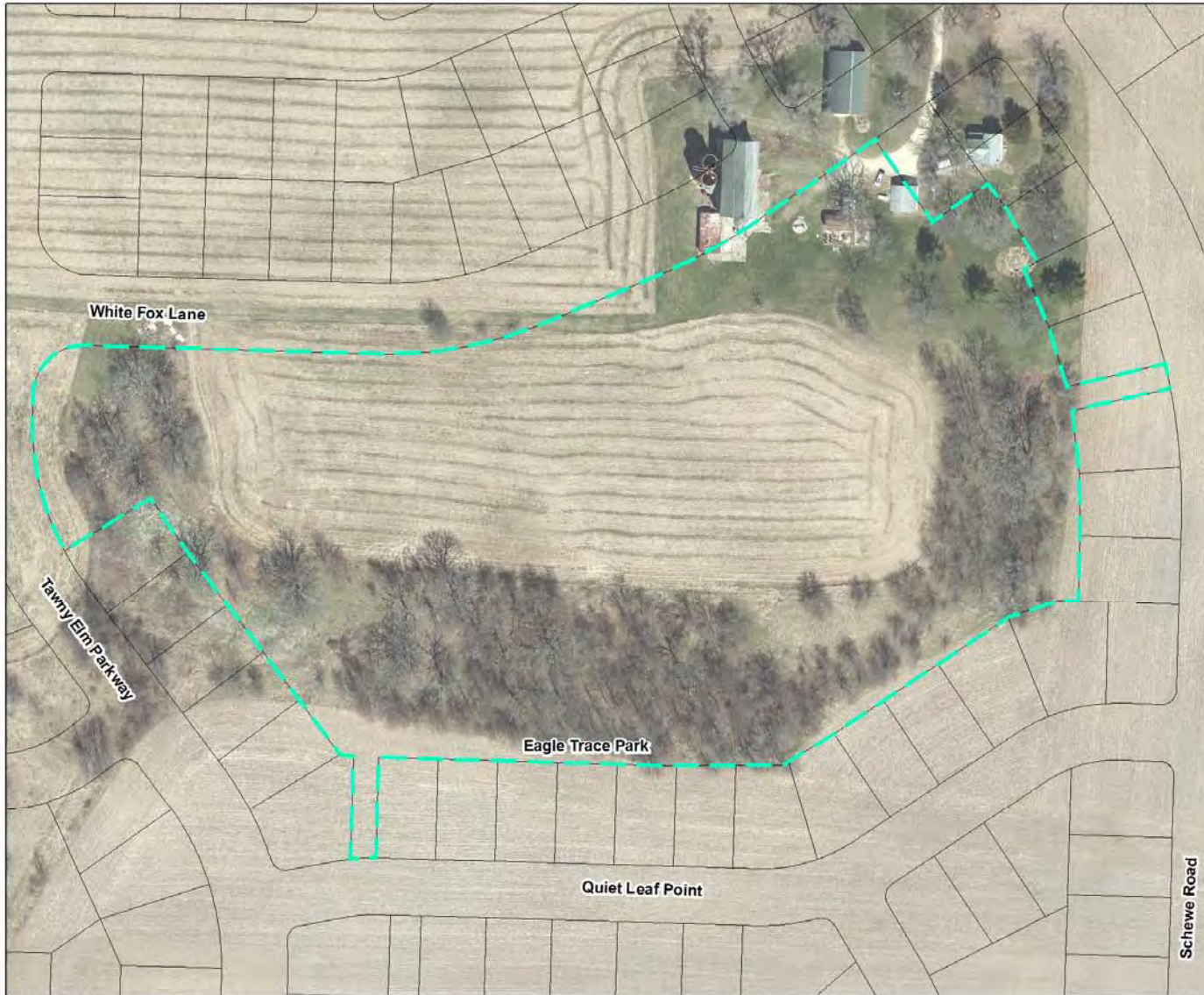


HISTORY

- 9.37-acre parcel dedicated to the City of Madison in 2018 as part of the Eagle Trace development
- Long history as a crop field and wind break on agricultural property
- No significant or suspected archaeological artifacts/buildings on site

EXISTING CONDITIONS

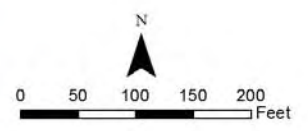
- Aerial
- Site Photos
- Topography and Slope
- Vegetation



Park Location

Legend

-  Eagle Trace Park
-  Ownership Parcels



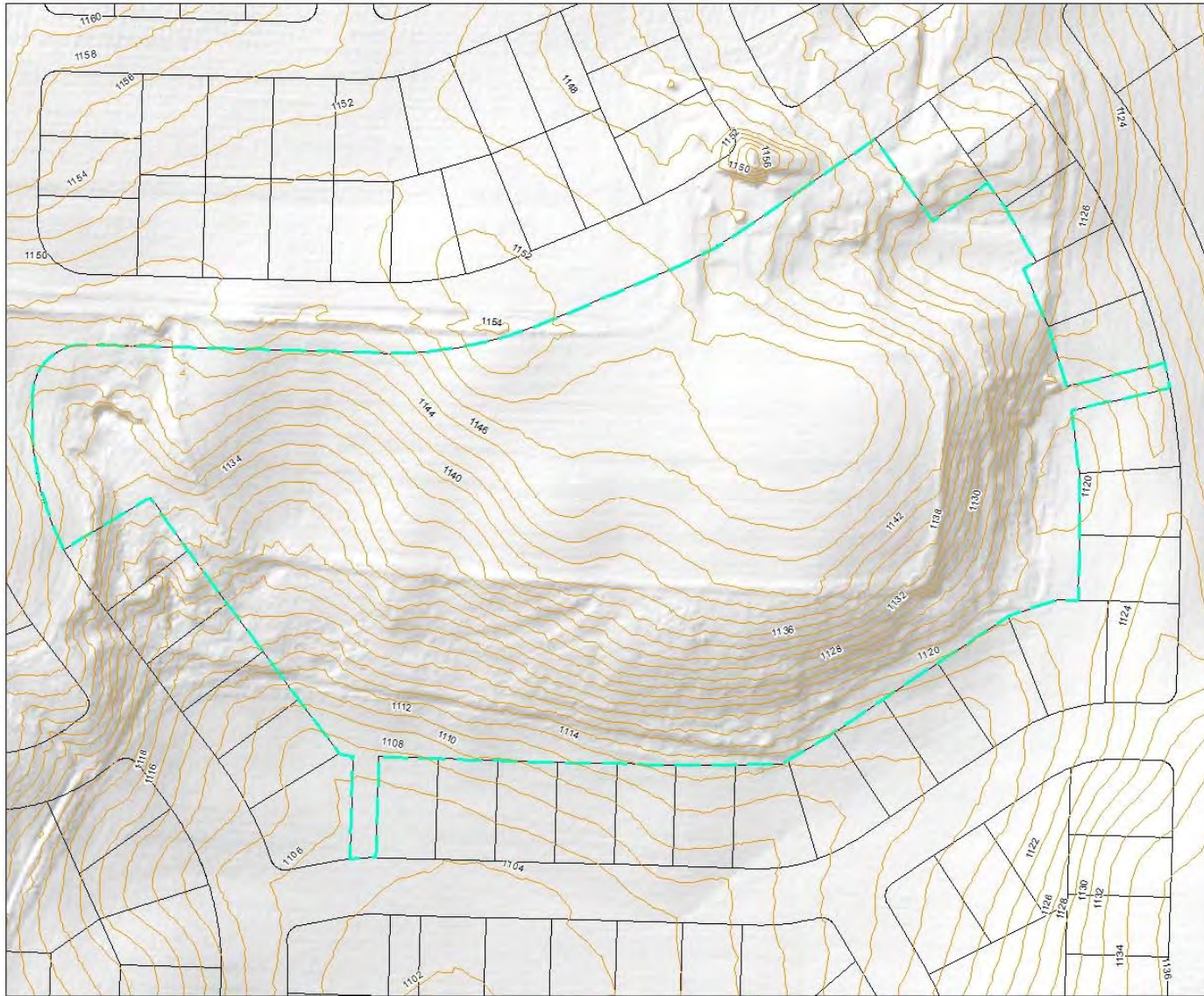
S
I
T
E

P
H
O
T
O
S





T
O
P
G
R
A
P
H
Y

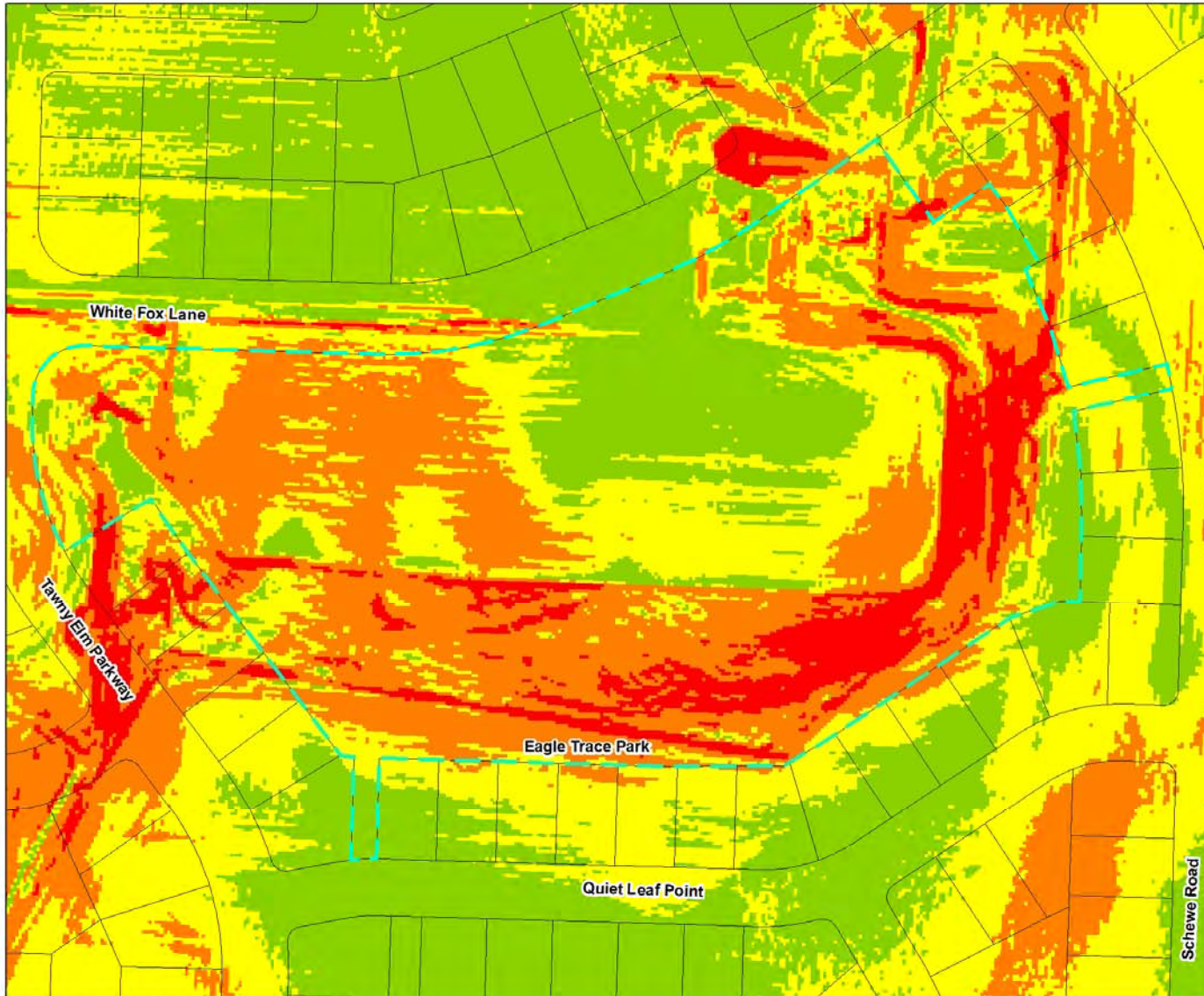


Site Topography

Legend

- Eagle Trace Park
- Ownership Parcels
- 2' Contours
- Elevation
 - High
 - Low

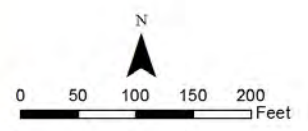
S
L
O
P
E



Park Slope Inventory

Legend

- Eagle Trace Park
- Ownership Parcels
- Slope (in %)
 - 0
 - 0 - 5
 - 6 - 10
 - 11 - 20
 - 21 - 100

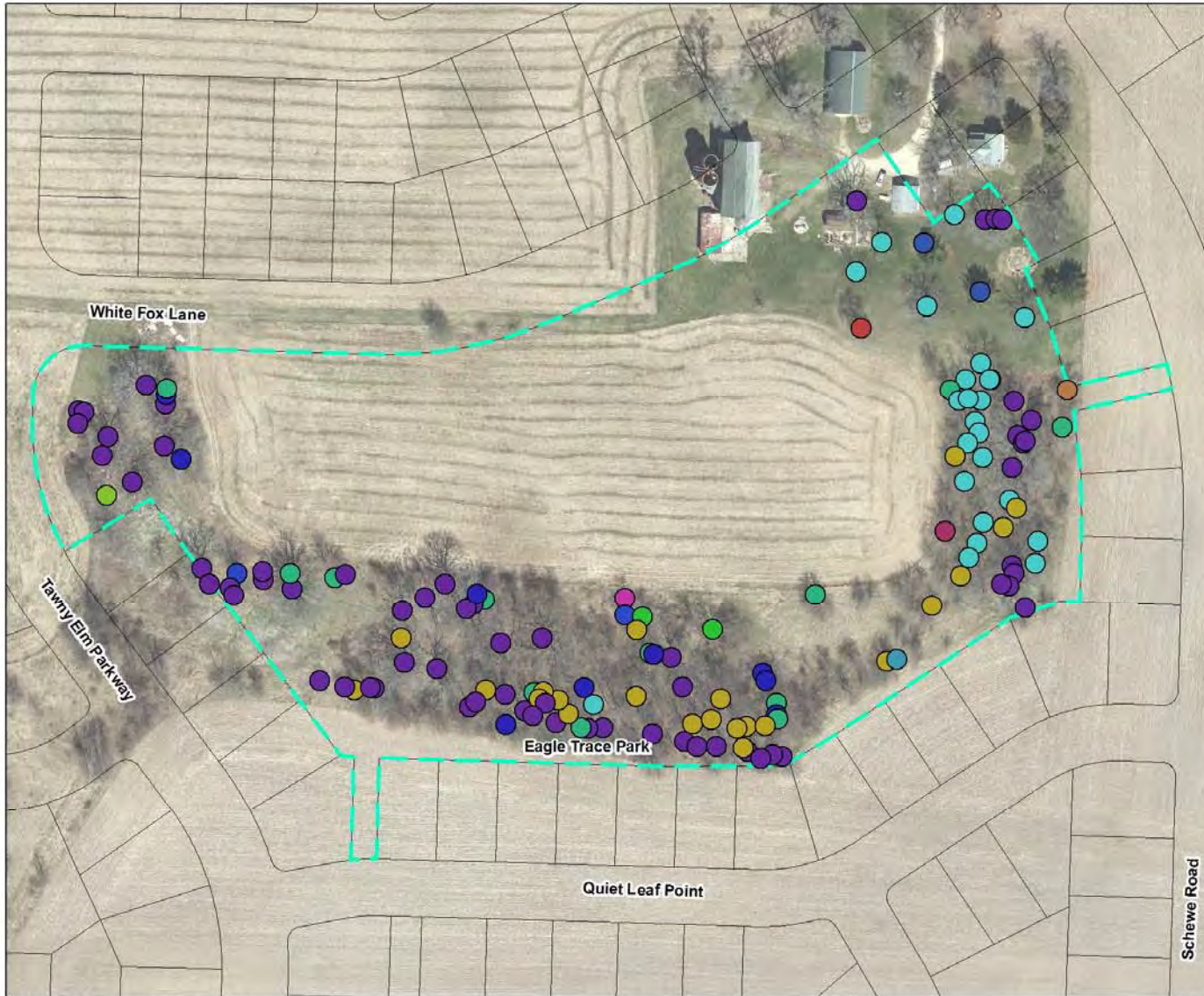


V
E
G
E
T
A
T
I
O
N

- Primarily trees and woody undergrowth
- Trees evaluated by Tree Health Management



V
E
G
E
T
A
T
I
O
N



Park Tree Survey

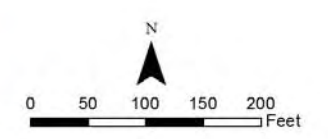
Legend

- - - Eagle Trace Park
- Ownership Parcels

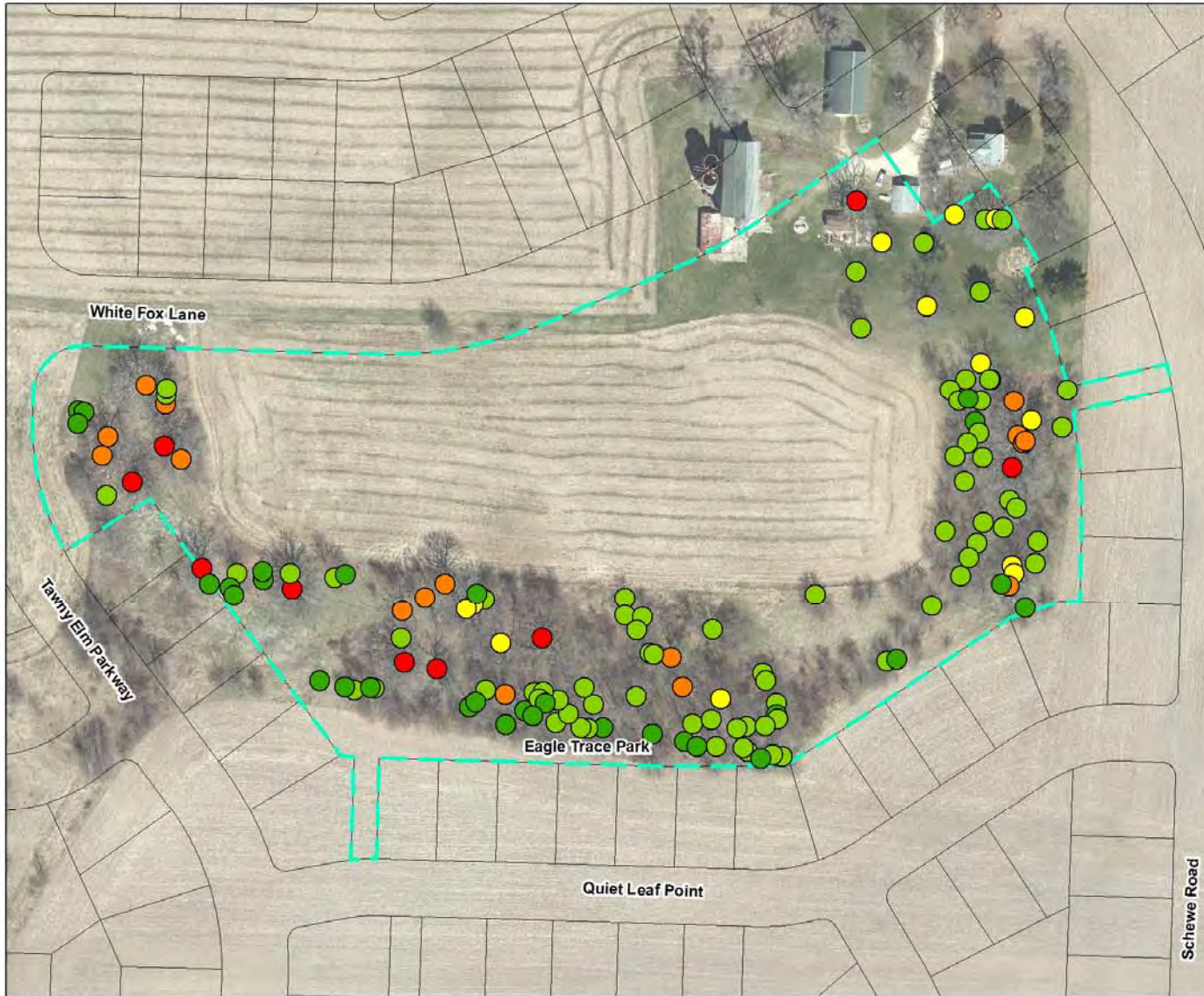
Tree Species

- American Elm- *Ulmus americana* (1)
- Black Ash- *Fraxinus nigra* (1)
- Black Cherry- *Prunus serotina* (22)
- Black Oak- *Quercus velutina* (1)
- Black Walnut- *Juglans nigra* (24)
- Box Elder- *Acer Negundo* (2)
- Buckthorn- *Rhamnus cathartica* (1)
- Bur Oak- *Quercus macrocarpa* (64)
- Hackberry- *Celtis occidentalis* (9)
- Mulberry- *Morus sp.* (12)
- Other (1)
- Red Oak- *Quercus rubra* (2)
- Siberian Elm- *Ulmus pumila* (1)
- White Pine- *Pinus strobus* (2)

Total: 143 trees



V
E
G
E
T
A
T
I
O
N



Park Tree Survey

Legend

- Eagle Trace Park
- Ownership Parcels

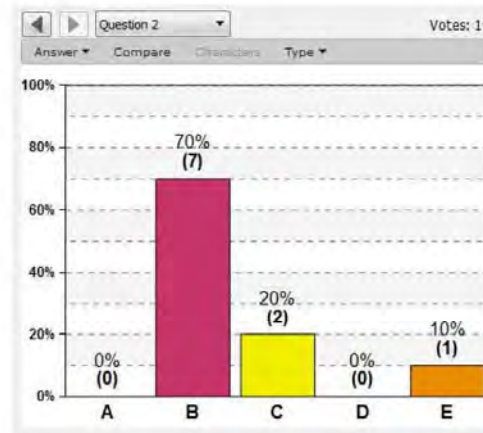
Tree Size in Inches
(Diameter at Breast Height)

- 4.0 - 8.5
- 8.6 - 17.0
- 17.1 - 28.0
- 28.1 - 39.0
- 39.1 - 46.0

IClicker QUESTION RESPONSES FROM PUBLIC INPUT MEETING 1: 11/18/2018

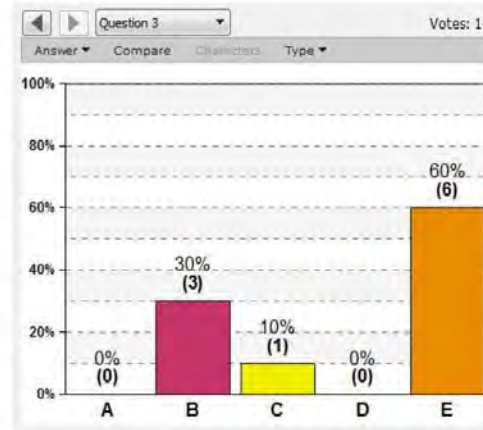
HOW LONG HAVE YOU LIVED IN THIS NEIGHBORHOOD?

- A. A few months or less
- B. About a year to two years
- C. About three to five years
- D. Over five years
- E. I don't live in the neighborhood



WHAT DO YOU FEEL IS MOST LACKING IN YOUR LOCAL COMMUNITY SPACES?

- A. Places to walk or bike for exercise
- B. Places for children to play
- C. Places to picnic and have gatherings
- D. Places to grow and eat local food
- E. Other

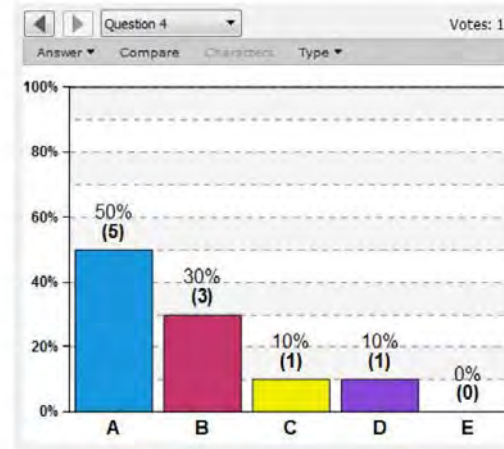


*Meeting attendees decided to use option "E. Other" instead as "E. All of the Above".

IClicker QUESTION RESPONSES FROM PUBLIC INPUT MEETING 1: 11/18/2018

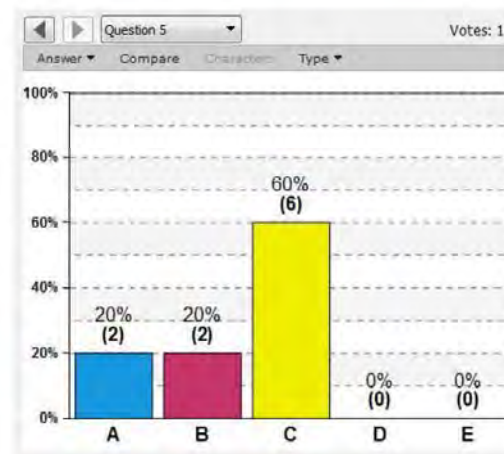
HOW OFTEN DO YOU VISIT A PARK OR OUTDOOR RECREATION AREA?

- A. Multiple times per week
- B. About once or twice a week
- C. Once or twice a month
- D. A few times a year
- E. Other



WHY DO YOU TYPICALLY VISIT PARKS/OUTDOOR RECREATION AREAS?

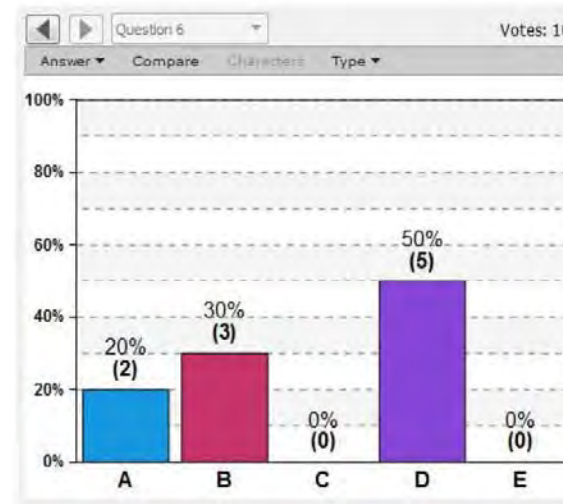
- A. To walk/hike or view nature
- B. To play a game or participate in a field sport
- C. To take my child(ren) to a playground
- D. To go to an event or festival
- E. Other



IClicker QUESTION RESPONSES FROM PUBLIC INPUT MEETING 1: 11/18/2018

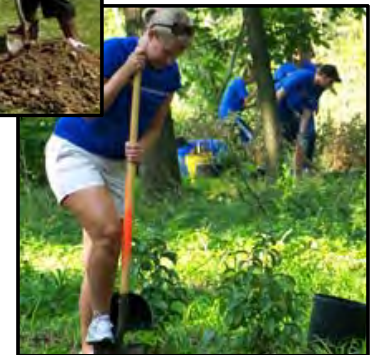
WHAT IS YOUR MOST DESIRED AMENITY AT EAGLE TRACE PARK?

- A. Fields/courts for sports and games
- B. Hiking trails and natural areas
- C. Off-leash dog area
- D. Play equipment for children**
- E. Other

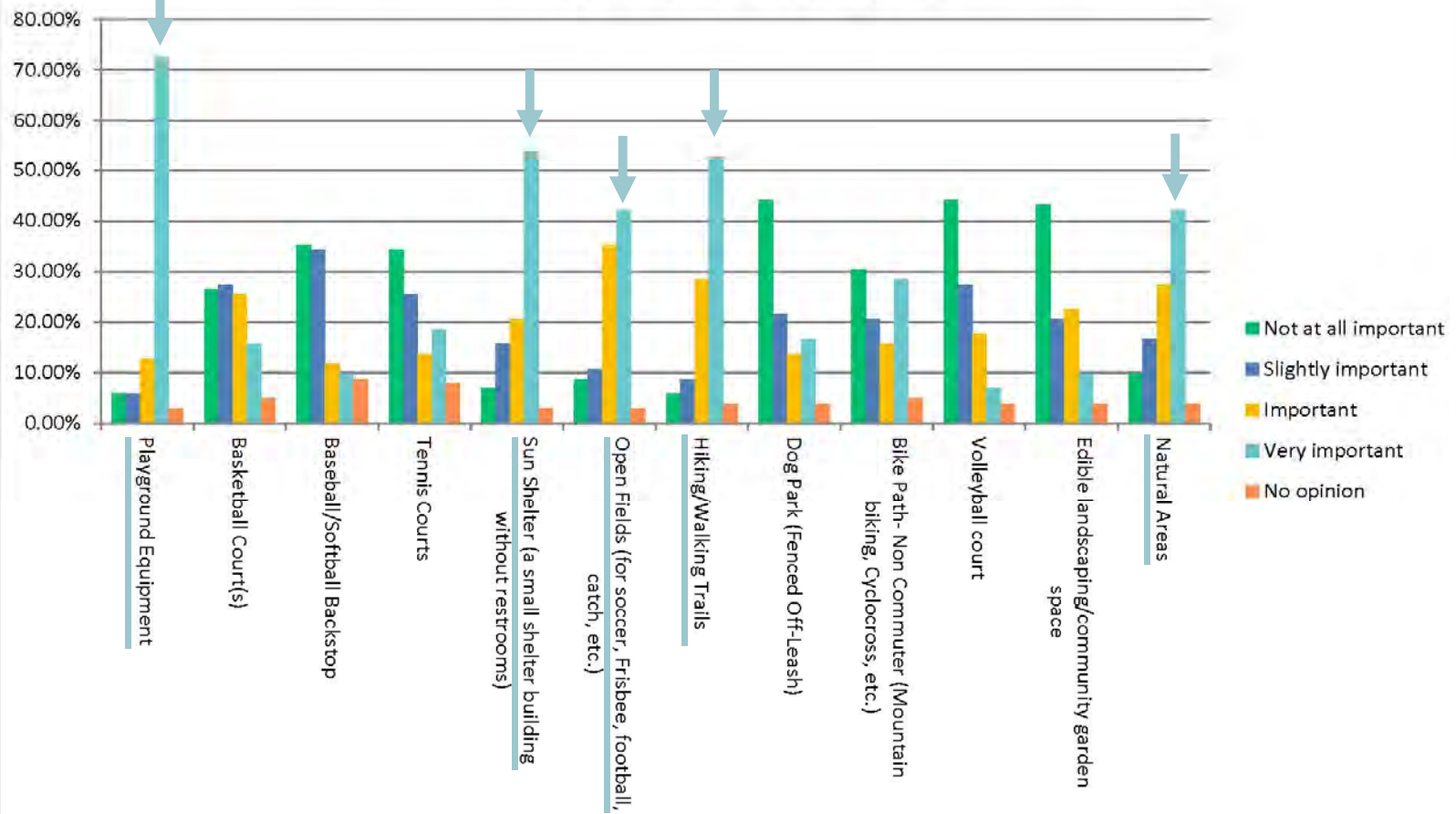


SURVEY

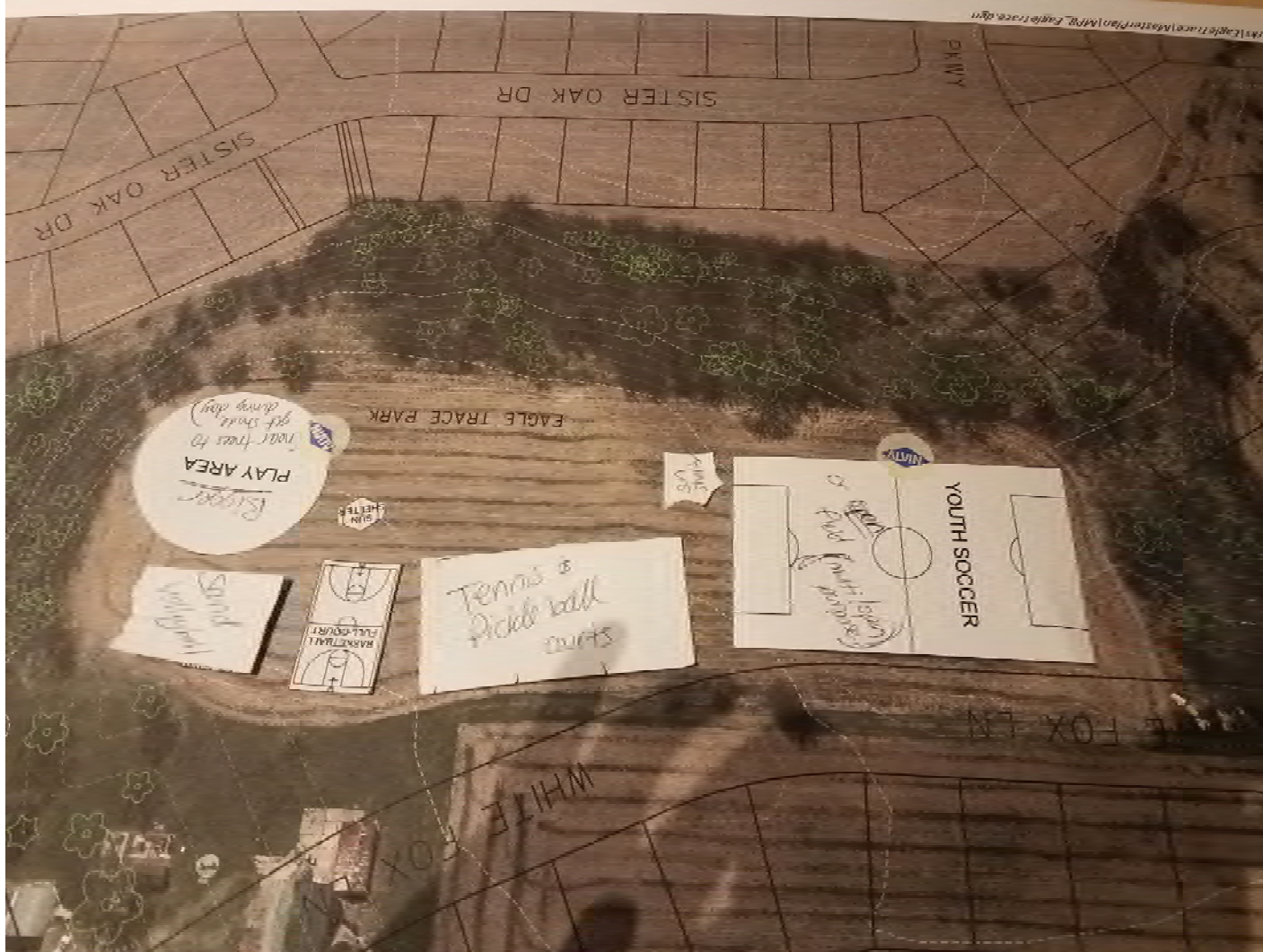
○ November 12, 2018 to December 7, 2018



Please rank the potential park amenities listed below according to how important you feel it is that they are included in the Eagle Trace Park master plan.



NEIGHBORHOOD DESIGN EXERCISE



Elements include:

- Multi-purpose playing field/open space
- Play area
- Sun Shelters (2)
- Basketball Court
- Tennis/pickleball courts
- Sand volleyball court

NEIGHBORHOOD DESIGN EXERCISE



Elements include:

- Multi-purpose playing field (soccer and lacrosse)
- Play area
- Sun shelter
- Basketball court
- Paths
- Tennis courts
- Sand volleyball courts
- Community garden

COMMON THEMES

✓ iClickers

- Top Result – Play equipment for children
- **Survey**
- Playground equipment
- Sun shelter
- Open fields (for soccer, football, etc.)
- Hiking/Walking trails
- Natural areas

✓ Design Exercise

- Play equipment
- Multipurpose playing/open field
- Sun shelter
- Tennis courts
- Sand volleyball court
- Basketball court

EAGLE TRACE PARK – Option 1

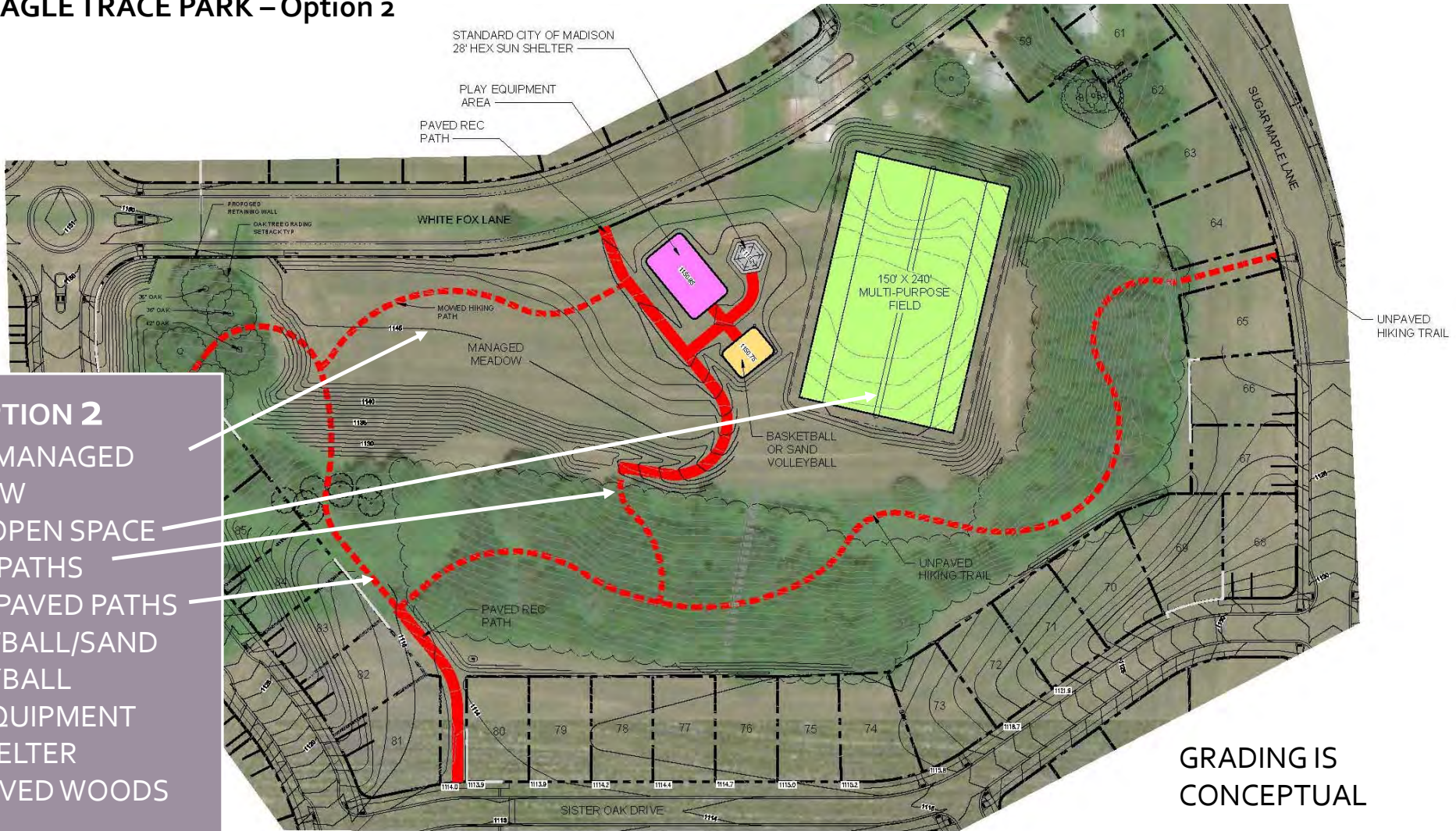
GRADING IS CONCEPTUAL



- OPTION 1**
- 2 FLAT OPEN SPACES
 - SINGLE TRACK BIKE TRAIL
 - PAVED PATHS
 - BASKETBALL/SAND VOLLEBALL
 - PLAY EQUIPMENT
 - SUN SHELTER
 - HIKING TRAILS
 - PRESERVED WOODS



EAGLE TRACE PARK – Option 2



OPTION 2

- LARGE MANAGED MEADOW
- 1 FLAT OPEN SPACE
- HIKING PATHS
- FEWER PAVED PATHS
- BASKETBALL/SAND VOLLEYBALL
- PLAY EQUIPMENT
- SUN SHELTER
- PRESERVED WOODS

GRADING IS CONCEPTUAL

Clickers – Real Time Polling

- Push orange button to turn on
- When poll is opened, choose response with A-E buttons
- Display will show a “v” when your response is received
- You can change your answer until the poll closes



Troubleshooting:

- Display says “Closed” – Poll is closed
- Clicker isn’t working – Push power button to turn off; turn on again
- Clicker still isn’t working – push and hold power button for two seconds, then press A twice to reconnect to receiver.
- Clickers turn off after 10 minutes; Push power button to turn back on.





SELECT A

OPTION 1

- 2 FLAT OPEN SPACES
- MOUNTAIN BIKE TRAIL
- PAVED PATHS
- BASKETBALL/SAND VOLLEBALL
- PLAY EQUIPMENT
- SUN SHELTER
- HIKING TRAILS



SELECT B

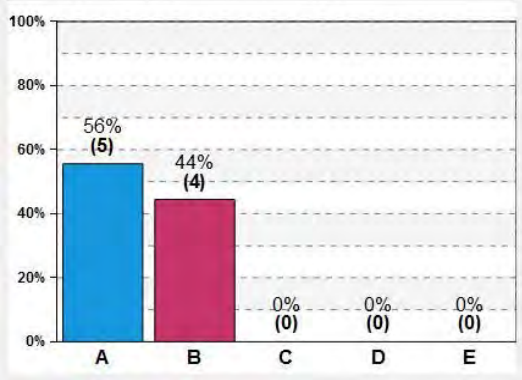
OPTION 2

- LARGE MANAGED MEADOW
- 1 FLAT OPEN SPACE
- HIKING PATHS
- FEWER PAVED PATHS
- BASKETBALL/SAND VOLLEYBALL
- PLAY EQUIPMENT
- SUN SHELTER
- PRESERVED WOODS

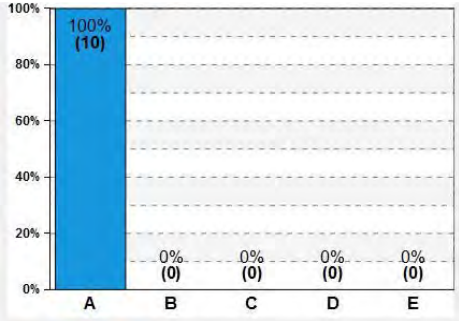




When asked which concept was preferred as proposed, the meeting attendees were split as identified below.



After discussion, when asked which concept they preferred if "A" changed the mountain bike trail to hiking trail, and incorporated sand volleyball and basketball the meeting attendees unanimously voted for option A.



PLAYGROUND DESIGN EXERCISE

Netting

Swings

Monkey Bars

Climbing Structures

Spinner

City of Madison Playground Options
Age Range: 5-12 Years Old

Company: Landscape Structures



Company: Playworld Systems



City of Madison Playground Options
Age Range: 5-12 Years Old

Company: Burke



PLAYGROUND DESIGNS

O
P
T
I
O
N

O
N
E



Requested features from PIM #1

Netting

Swings

Monkey Bars

Climbing Structures

Spinner

OPTION #1

Requested features from PIM #1

- Netting**
- Swings**
- Monkey Bars**
- Climbing Structures**
- Spinner**



O
P
T
I
O
N

T
W
O

Requested features from PIM #1

Netting

Swings

Monkey Bars

Climbing Structures

Spinner



O
P
T
I
O
N

T
W
O

Requested features from PIM #1

Netting

Swings

Monkey Bars

Climbing Structures

Spinner



P
L
A
Y
G
R
O
U
N
D

O
P
T
I
O
N

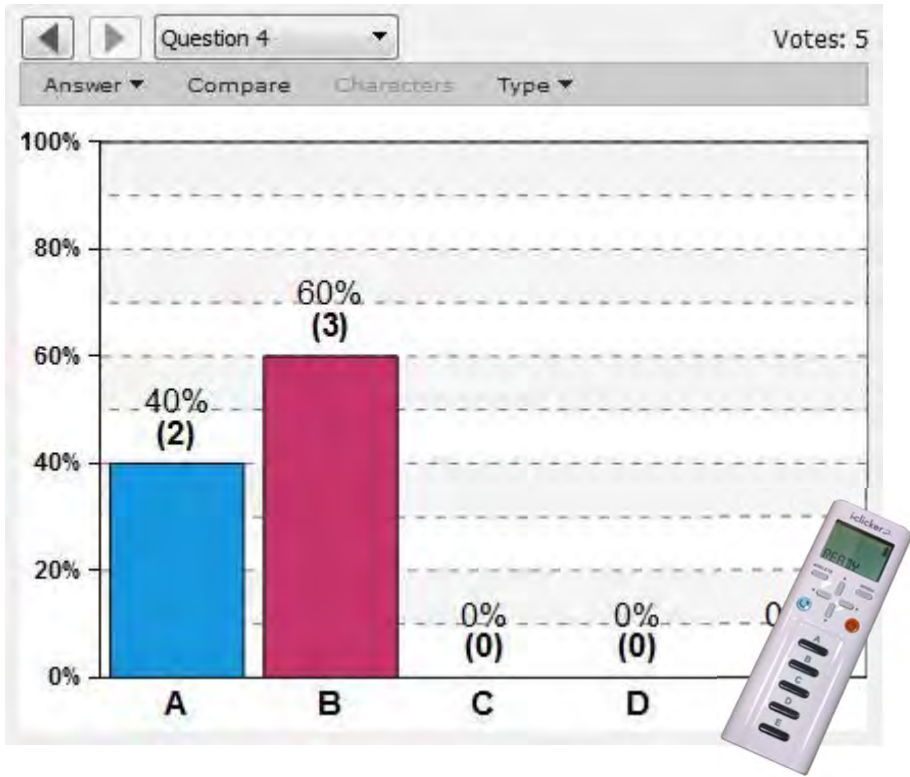
SELECT A



SELECT B



Of the two presented playground options the meeting attendees selected Option B.



PLAYGROUND SURFACING

- ENGINEERED WOOD FIBER
- COATED RUBBER MULCH

E
N
G
I
N
E
E
R
E
D
W
O
O
D



R
U
B
B
E
R

M
U
L
C
H



SELECT A



ENGINEERED WOOD FIBER

SELECT B



RUBBER MULCH

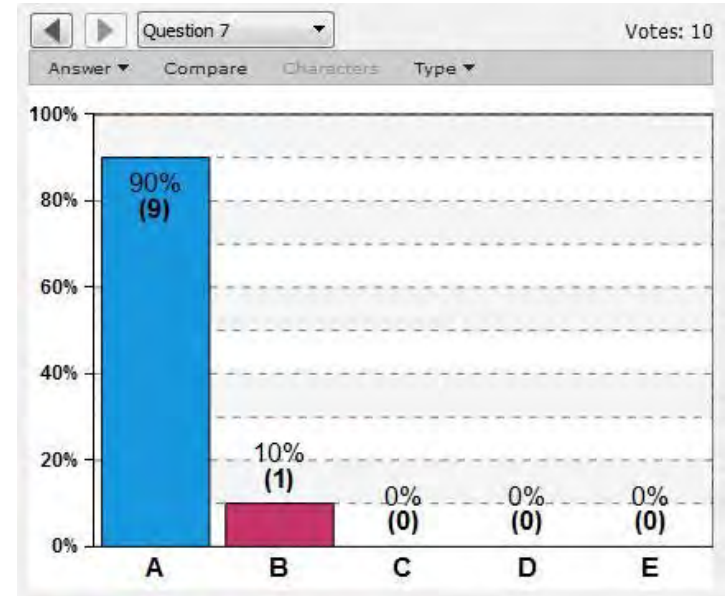


SELECT A



ENGINEERED WOOD FIBER

Of the two playground surfacing options, meeting attendees selected Engineered Wood Fiber Mulch.



PLAY STRUCTURE COLORS

A: PURPLE POSTS & LIME GREEN RAILINGS

B: PURPLE POSTS: & GREEN RAILINGS

C: BLUE POSTS & GREEN RAILINGS

D: BLUE POSTS & LIME GREEN RAILINGS

E: BROWN POSTS AND GREEN RAILINGS



PLAY STRUCTURE COLORS

Of the playground structure colors provided, the meeting attendees selected brown posts and green railings.

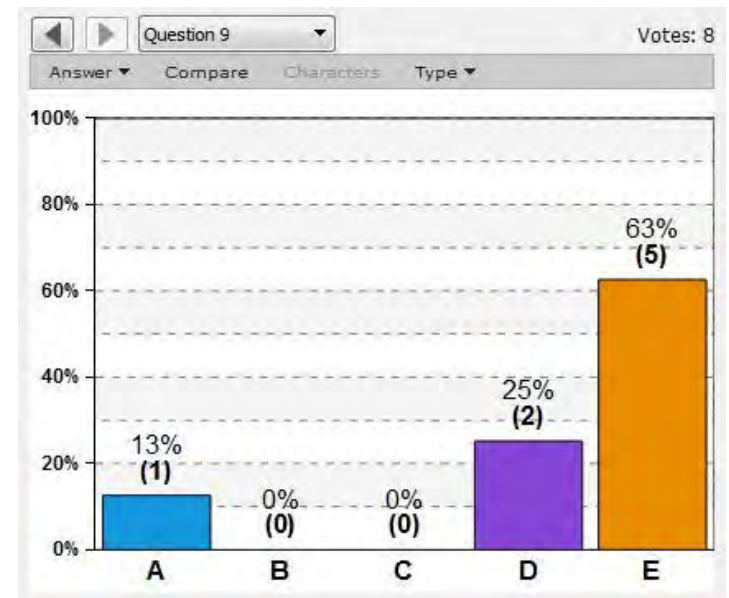
A: PURPLE POSTS & LIME GREEN RAILINGS

B: PURPLE POSTS: & GREEN RAILINGS

C: BLUE POSTS & GREEN RAILINGS

D: BLUE POSTS & LIME GREEN RAILINGS

E: BROWN POSTS AND GREEN RAILINGS



NEXT STEPS

- BOARD OF PARK COMMISSIONERS APPROVAL OF MASTER PLAN
- FUNDING FOR DEVELOPMENT

