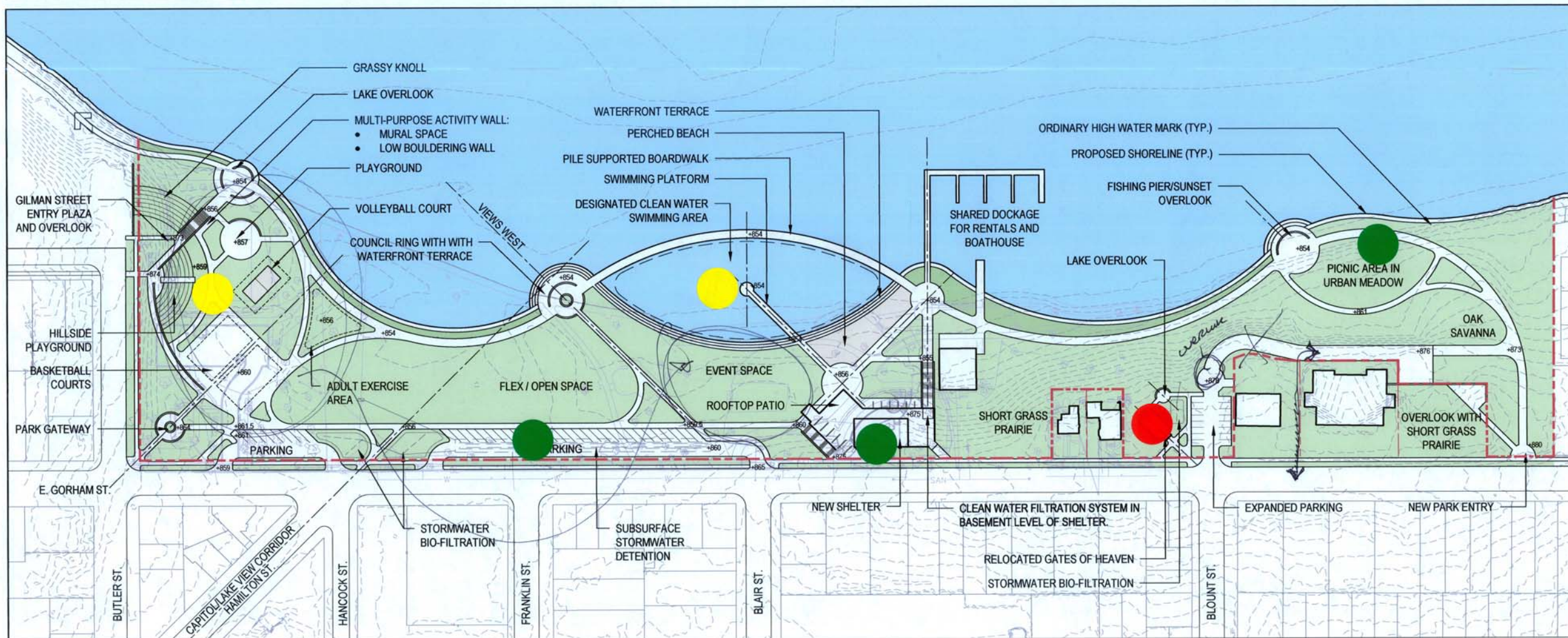


James Madison Park 6

Master Plan - Option C

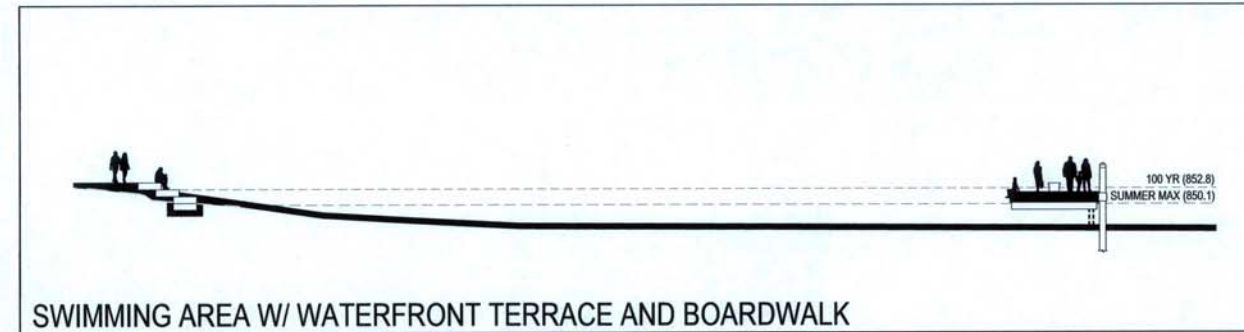
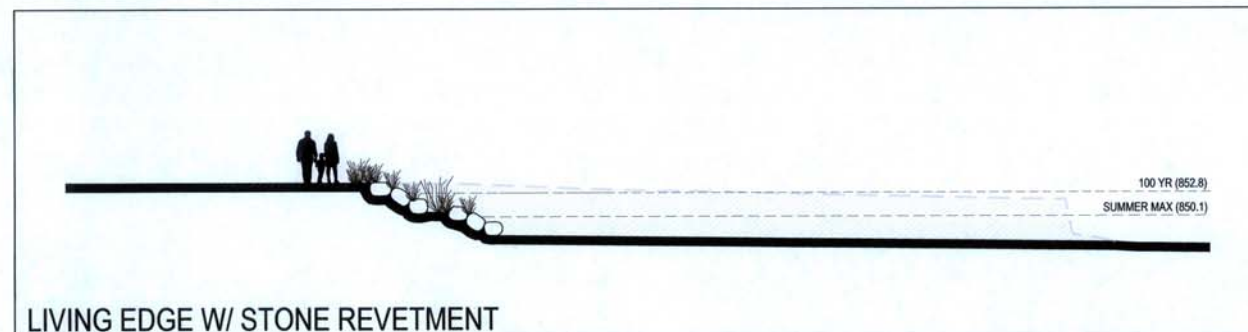
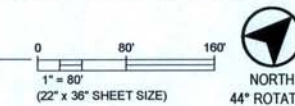


Public Comments

- + LIKE - PARKING ADJACENT TO STREET
- + LIKE - CLUSTER RECREATION
- + NO - MOVING GATES OF HEAVEN
- + LIKE - PASSIVE REC. ON EAST SIDE.
- + NO - LOSING TOO MUCH OPEN SPACE.
- + NO - APPROACH TO BOAT HOUSE IS NOT FUNCTIONAL AS SHOWN. FOR ROWING CLUBS.
- + THOUGHT - GRADE TRANSITIONS EXTERIOR TO BUILDING - NOT JUST FLE VATORS INSIDE
- + LIKE - CAPE IN PARK SHELTER.

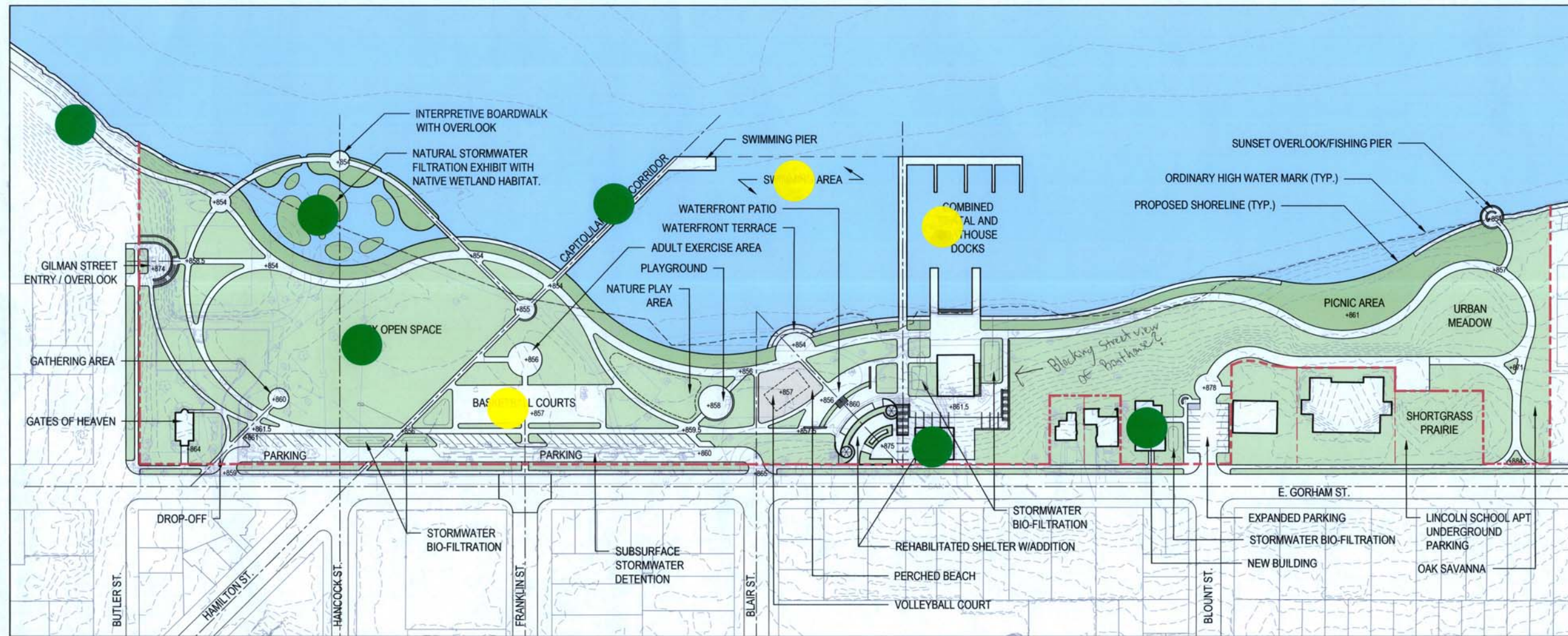
C JAMES MADISON PARK MASTER PLAN - OPTION C

SCALE: 1" = 80'-0"



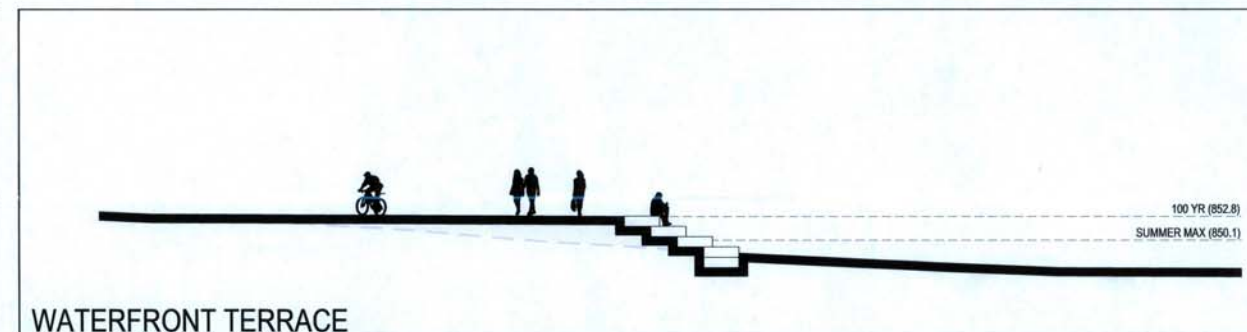
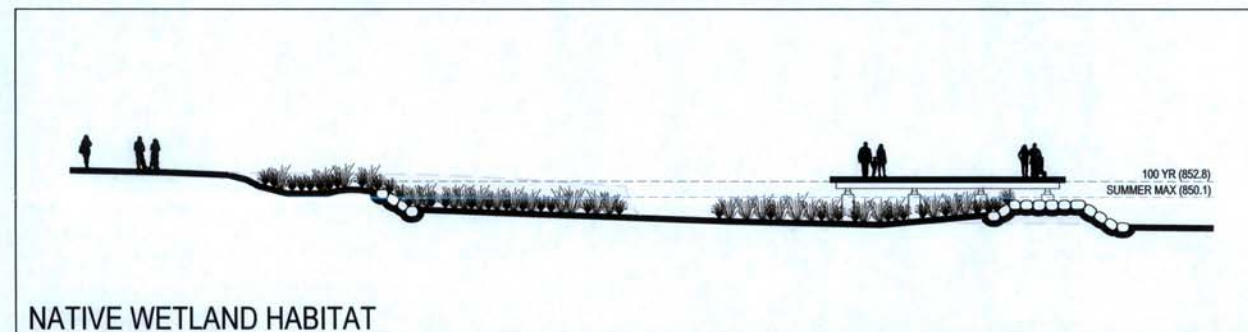
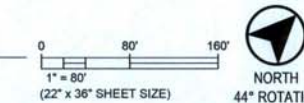
James Madison Park

Master Plan - Option A



Public Comments

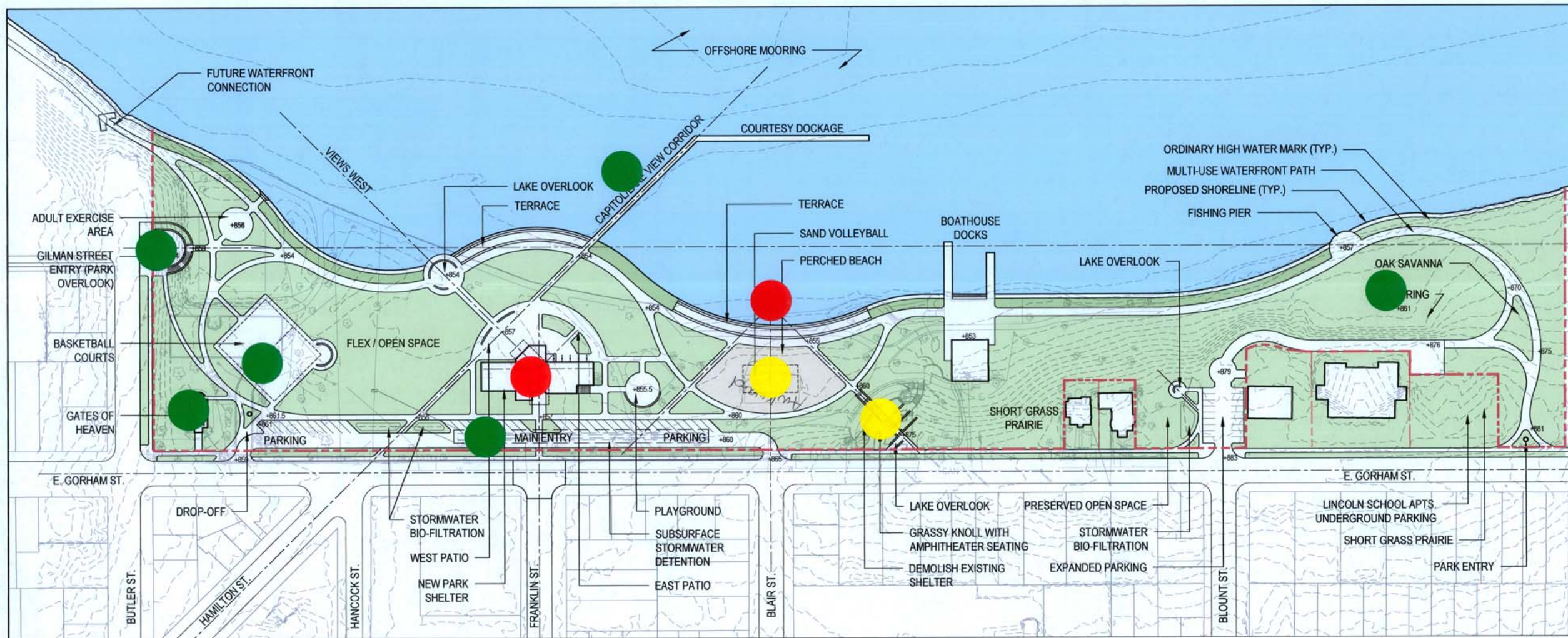
A JAMES MADISON PARK MASTER PLAN - OPTION A
SCALE: 1" = 80'-0"



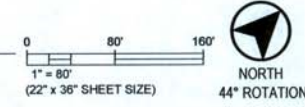
Don't like perched beach

James Madison Park

Master Plan - Option B

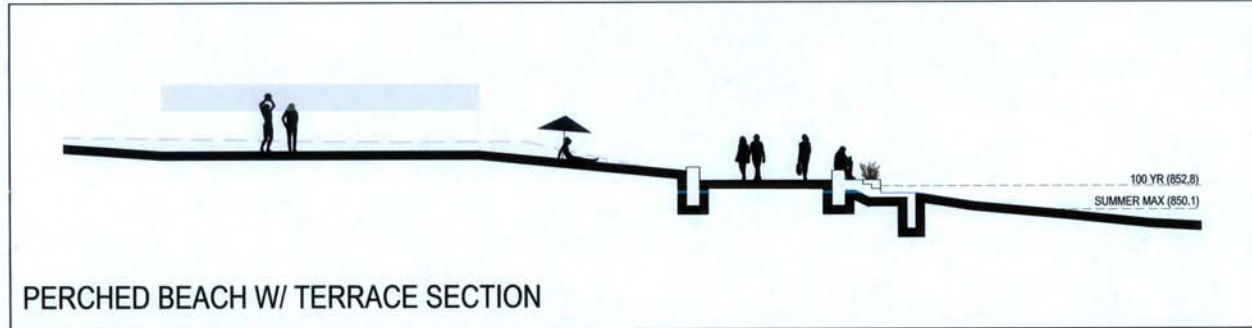
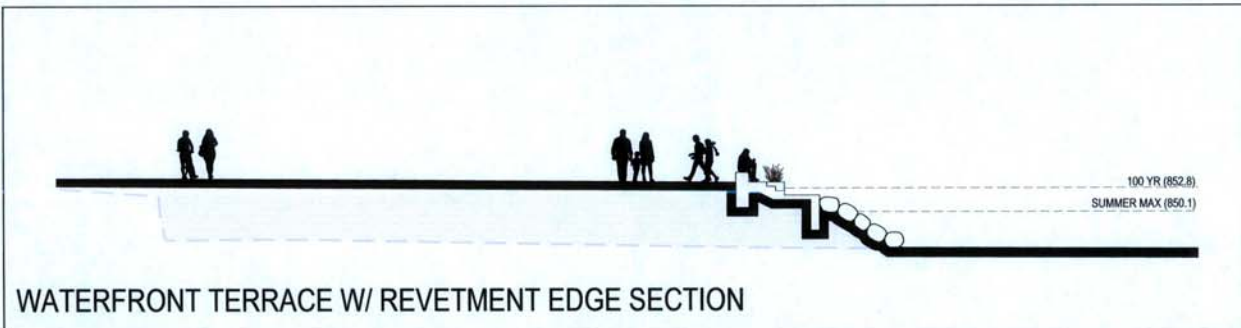


B JAMES MADISON PARK MASTER PLAN - OPTION B
SCALE: 1" = 80'-0"



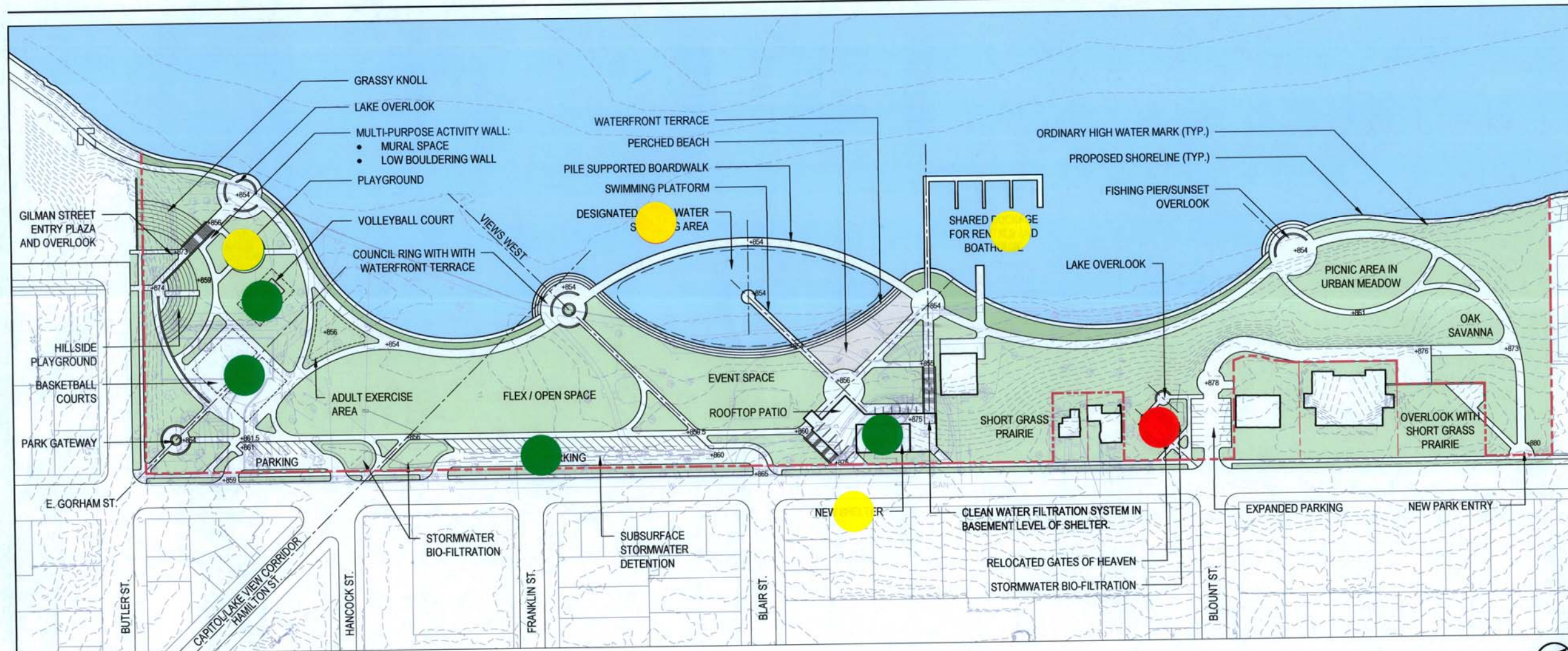
Public Comments

Perched beach seems awkward
Do not like location of shelter
No designated swimming area

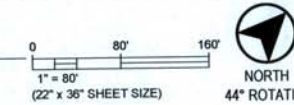


James Madison Park

Master Plan - Option C

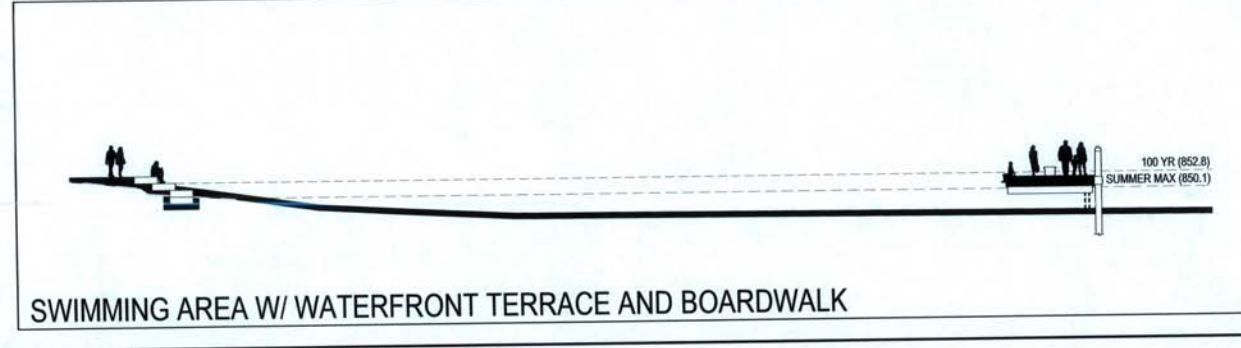
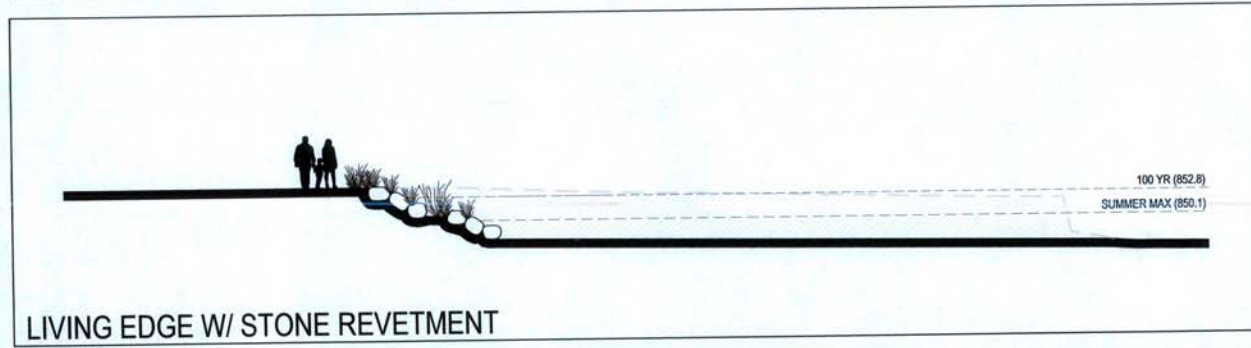


C JAMES MADISON PARK MASTER PLAN - OPTION C
SCALE: 1" = 80'-0"



Public Comments

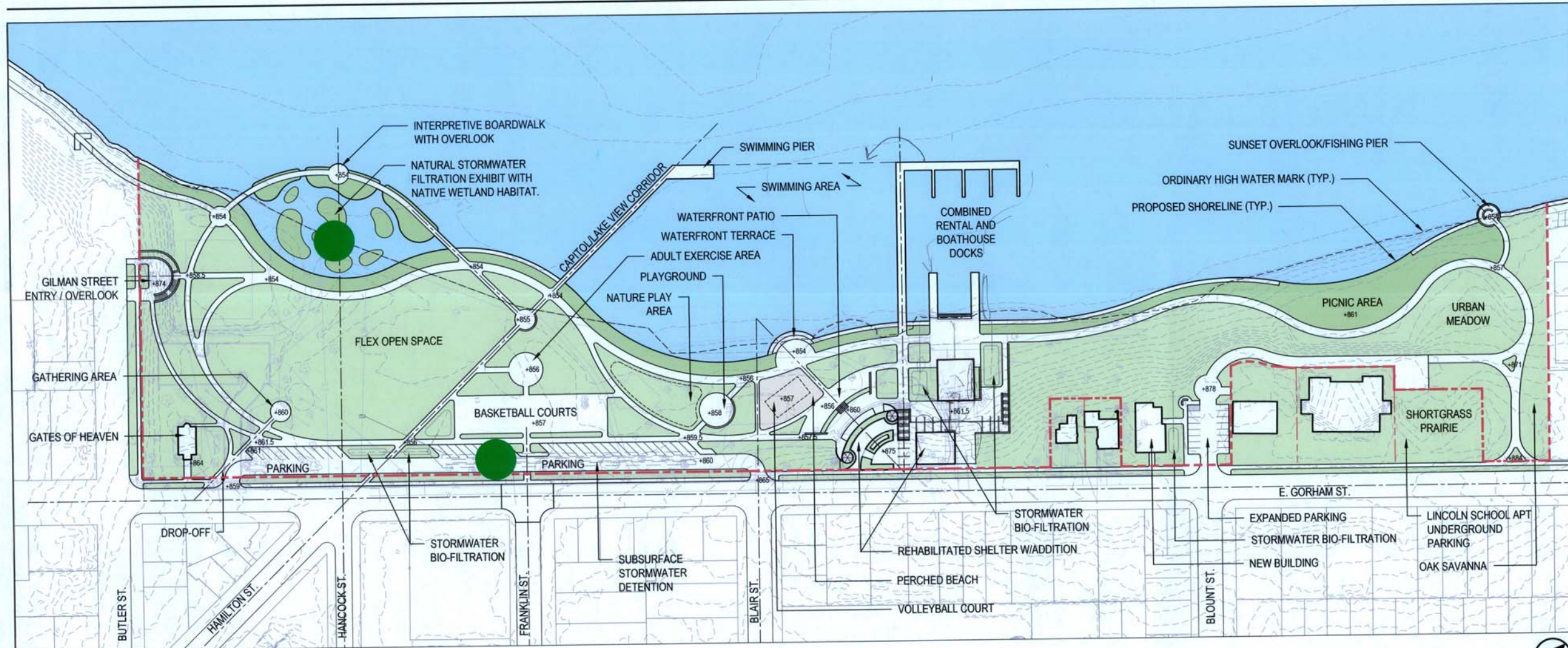
Don't like perched beach
Concern about playground being separate from picnic area
60-foot boats need to be able to load at the boat house deck
Placement of shelter is favorite
Don't like extended shoreline in front of boat house



James Madison Park

Master Plan - Option A

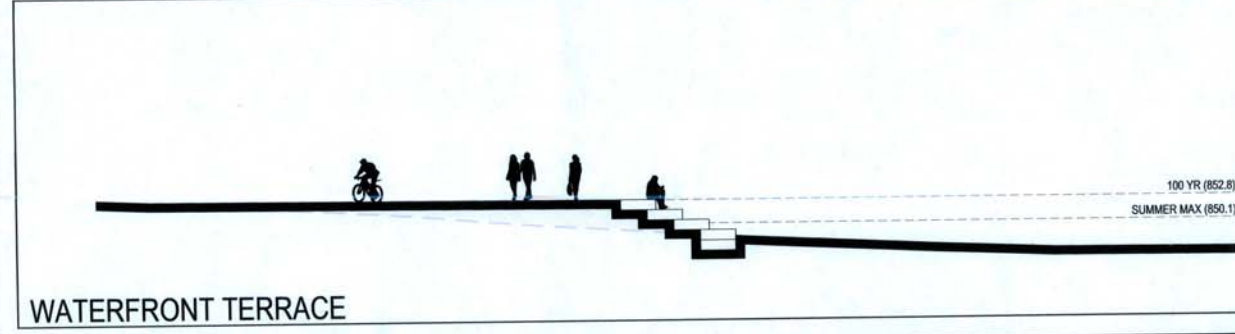
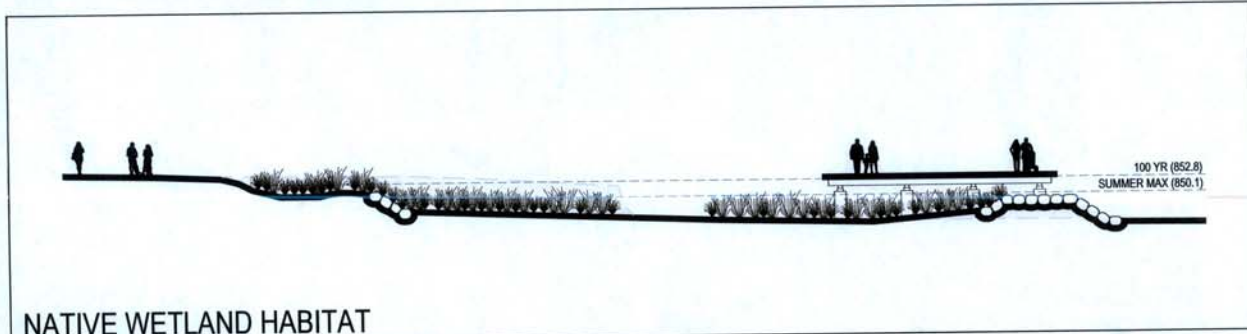
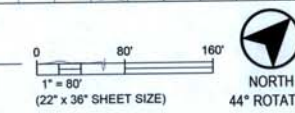
2



Public Comments

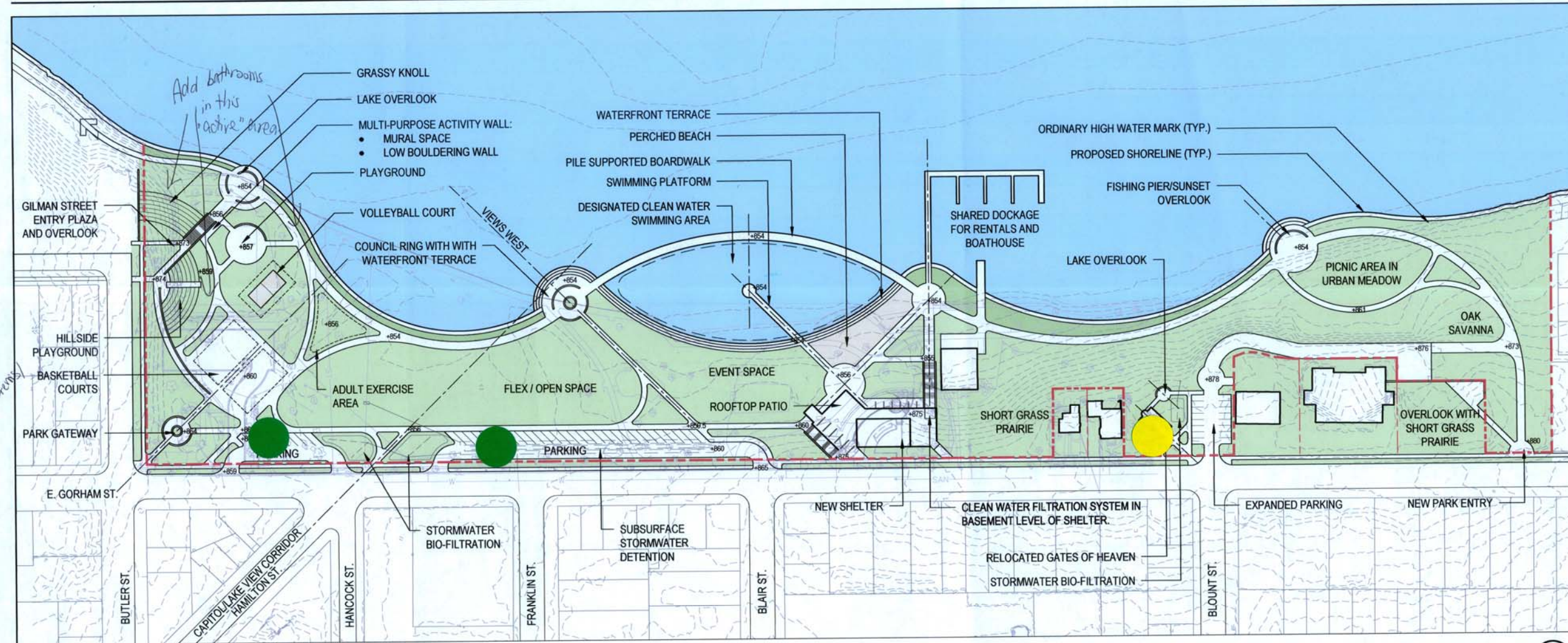
A JAMES MADISON PARK MASTER PLAN - OPTION A

SCALE: 1" = 80'-0"



James Madison Park

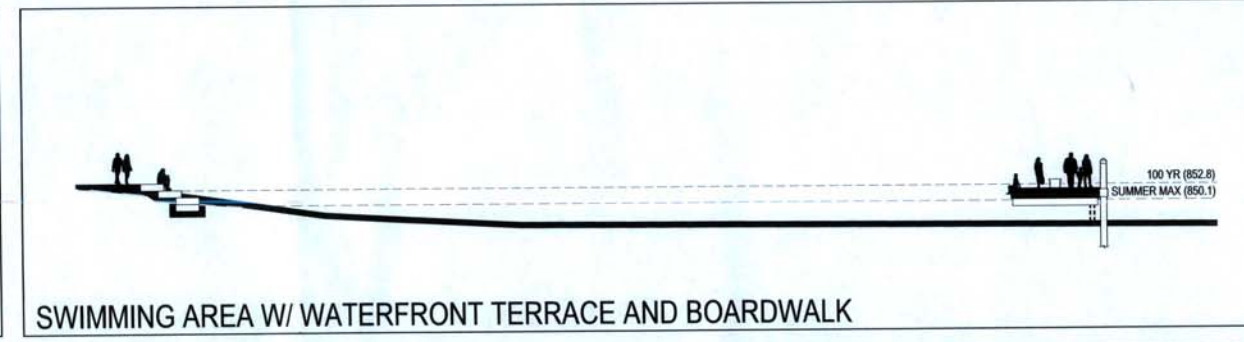
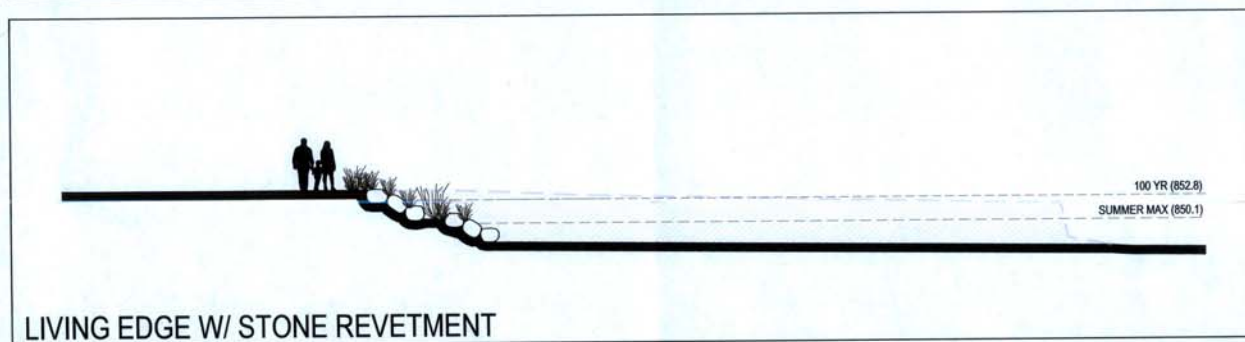
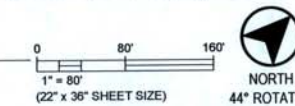
Master Plan - Option C



Public Comments

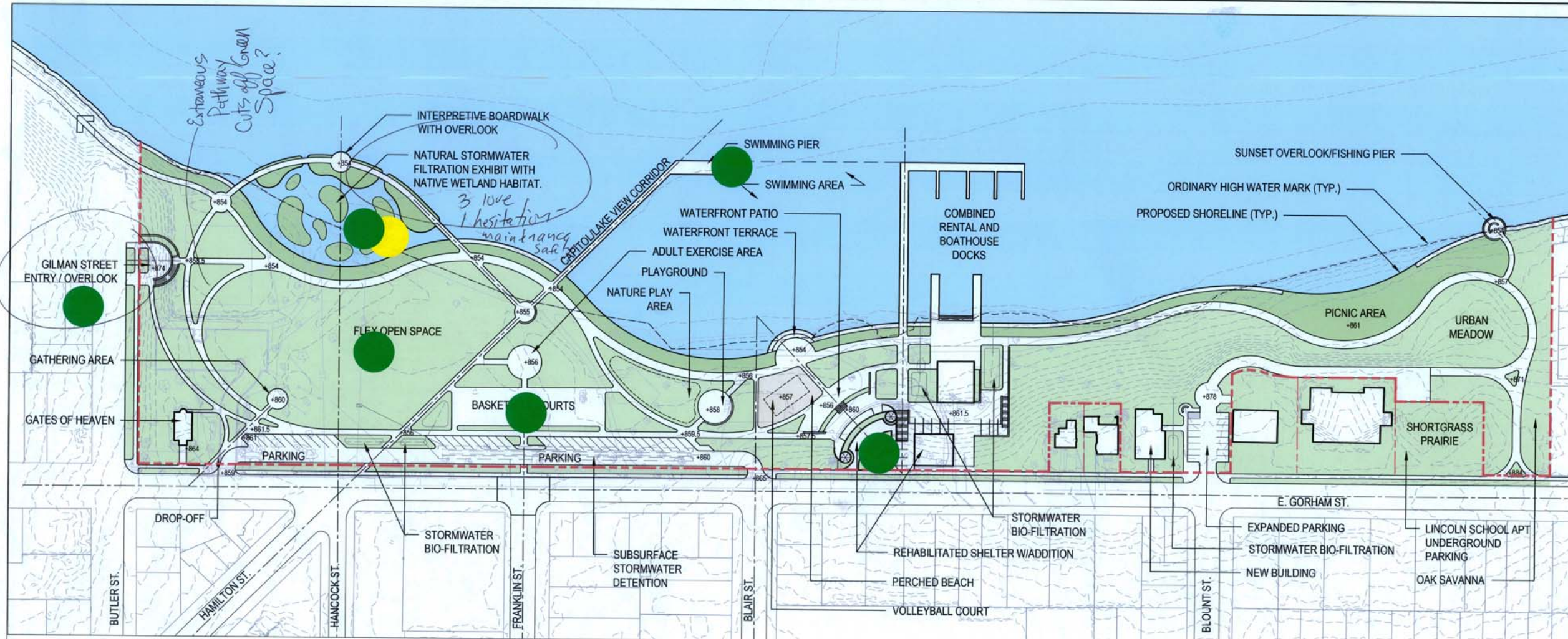
C JAMES MADISON PARK MASTER PLAN - OPTION C

SCALE: 1" = 80'-0"



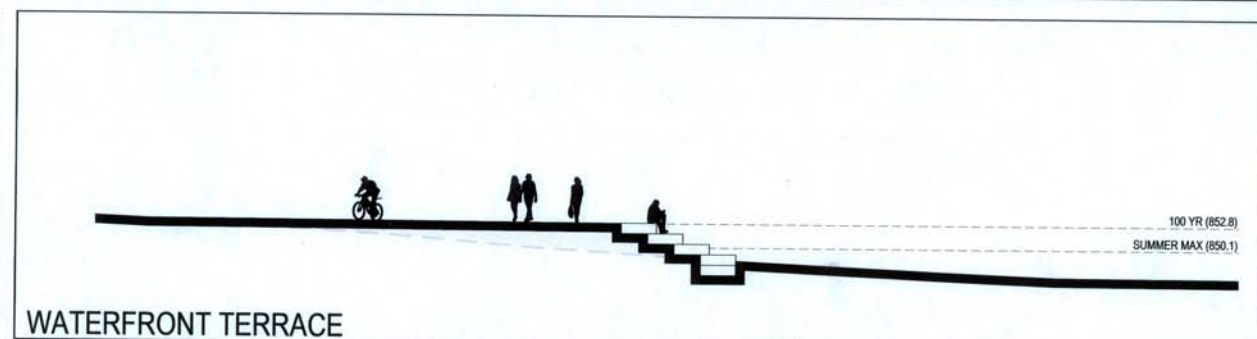
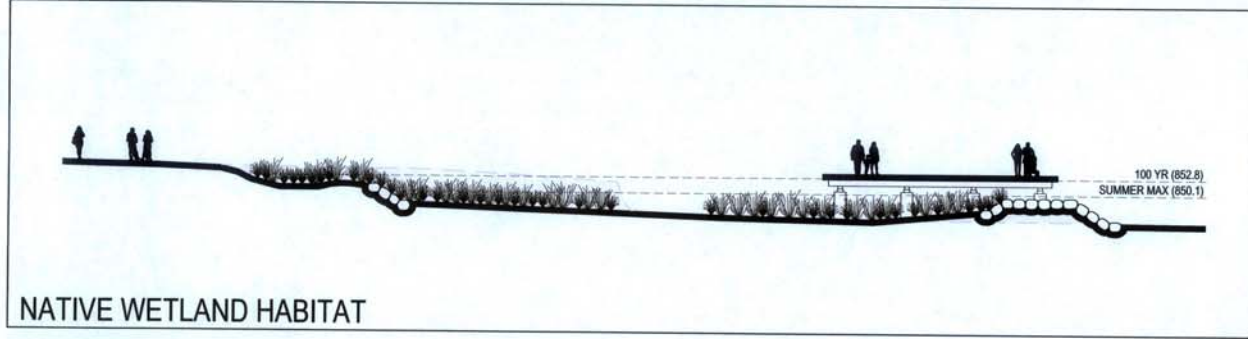
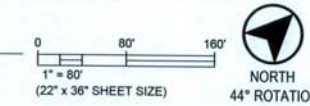
James Madison Park

Master Plan - Option A



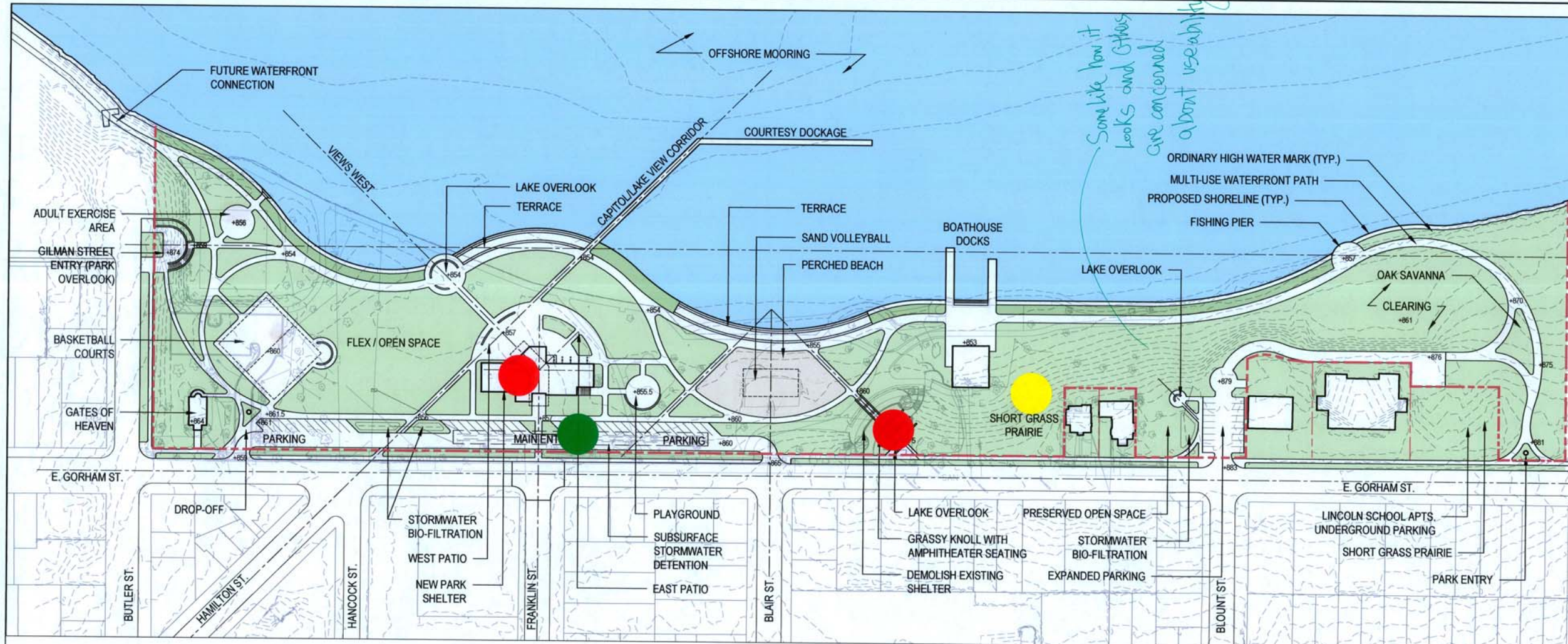
Public Comments

A JAMES MADISON PARK MASTER PLAN - OPTION A
SCALE: 1" = 80'-0"



James Madison Park

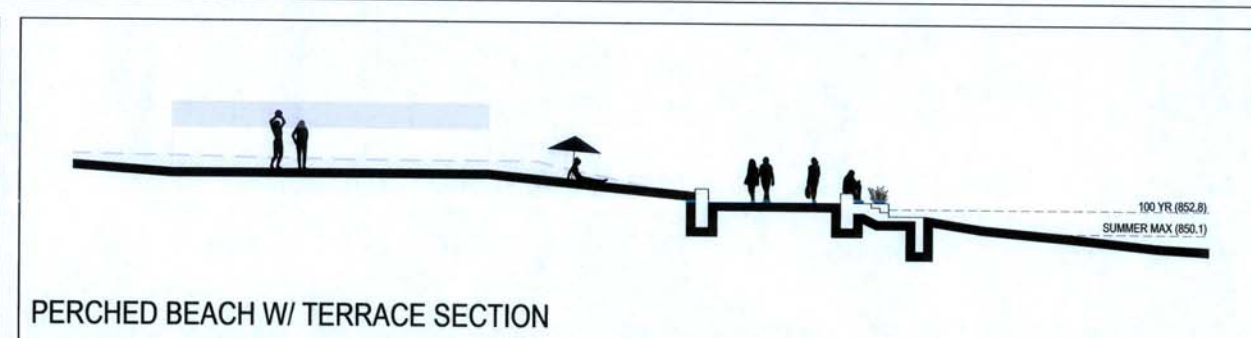
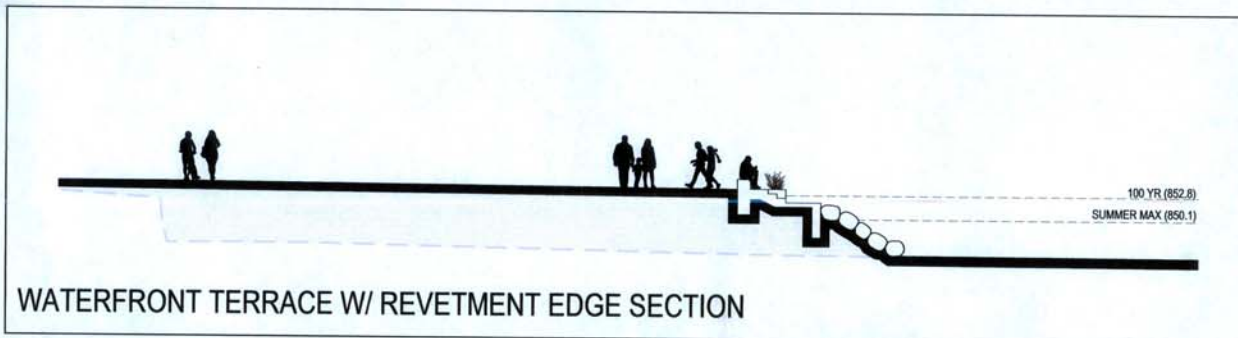
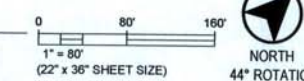
Master Plan - Option B



Public Comments

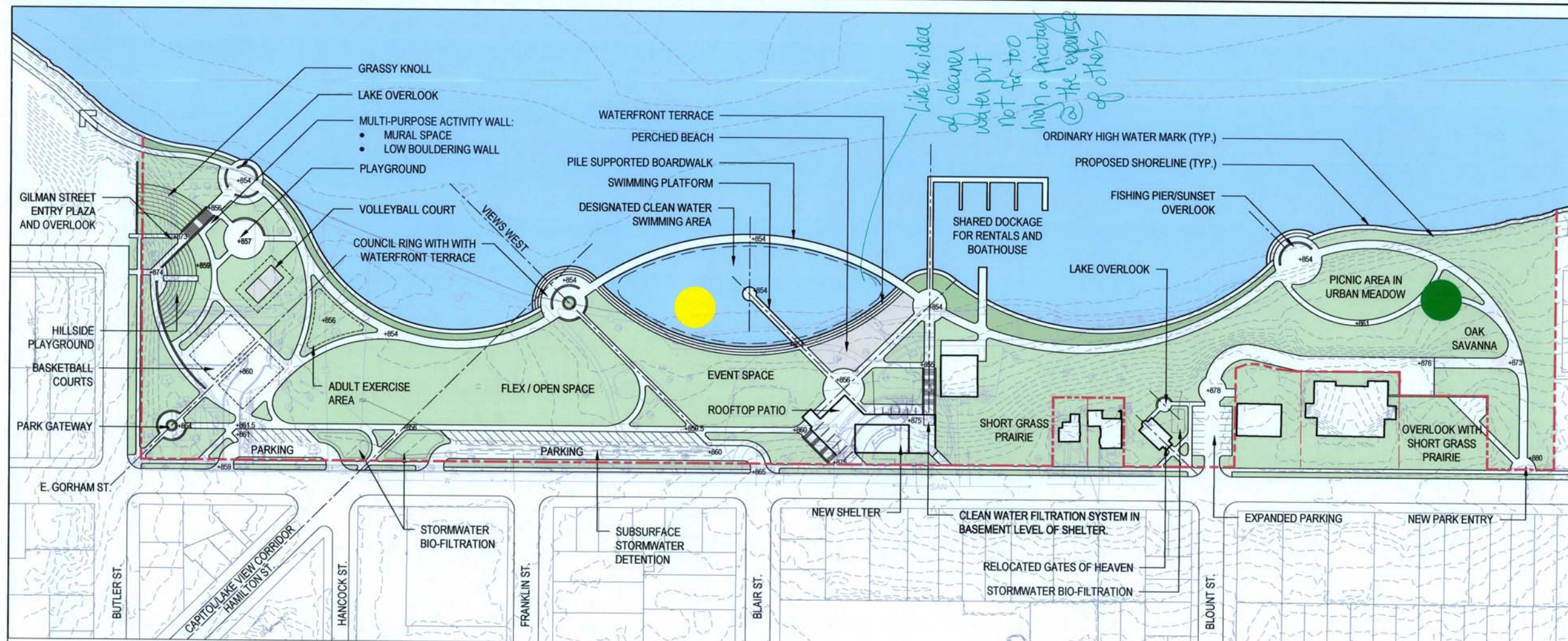
B JAMES MADISON PARK MASTER PLAN - OPTION B

SCALE: 1" = 80'-0"



James Madison Park

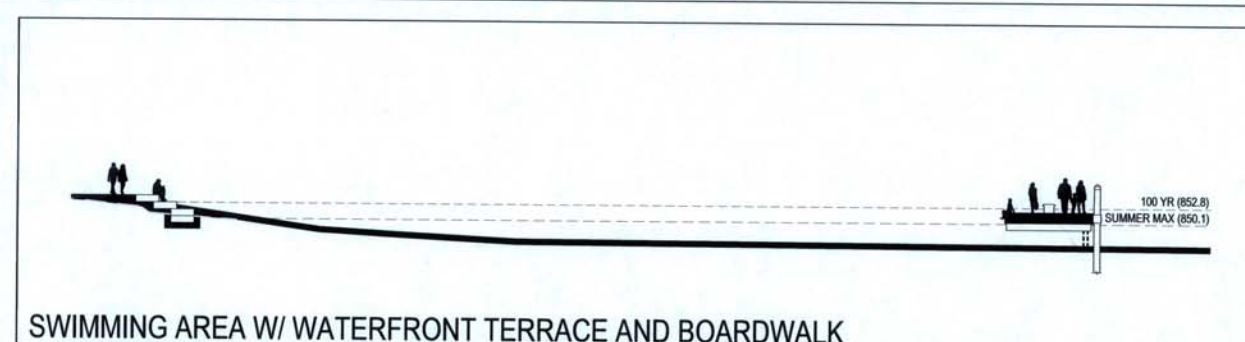
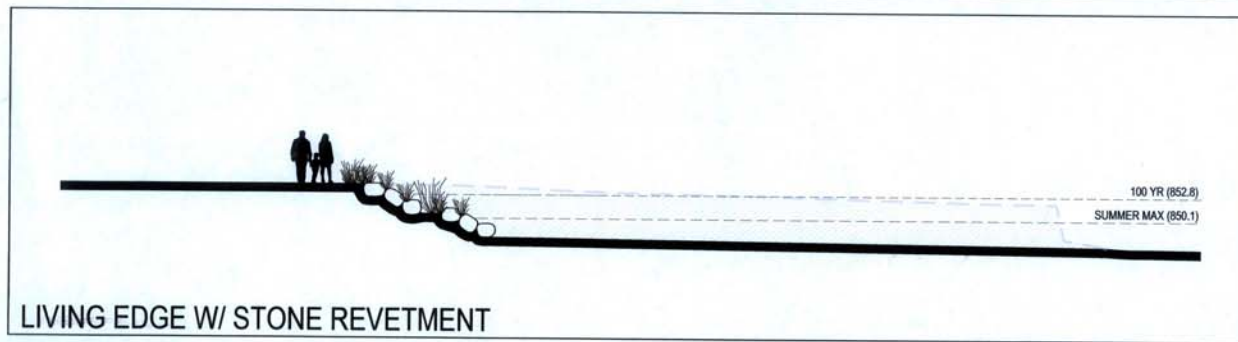
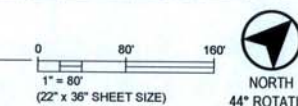
Master Plan - Option C



Public Comments

C JAMES MADISON PARK MASTER PLAN - OPTION C

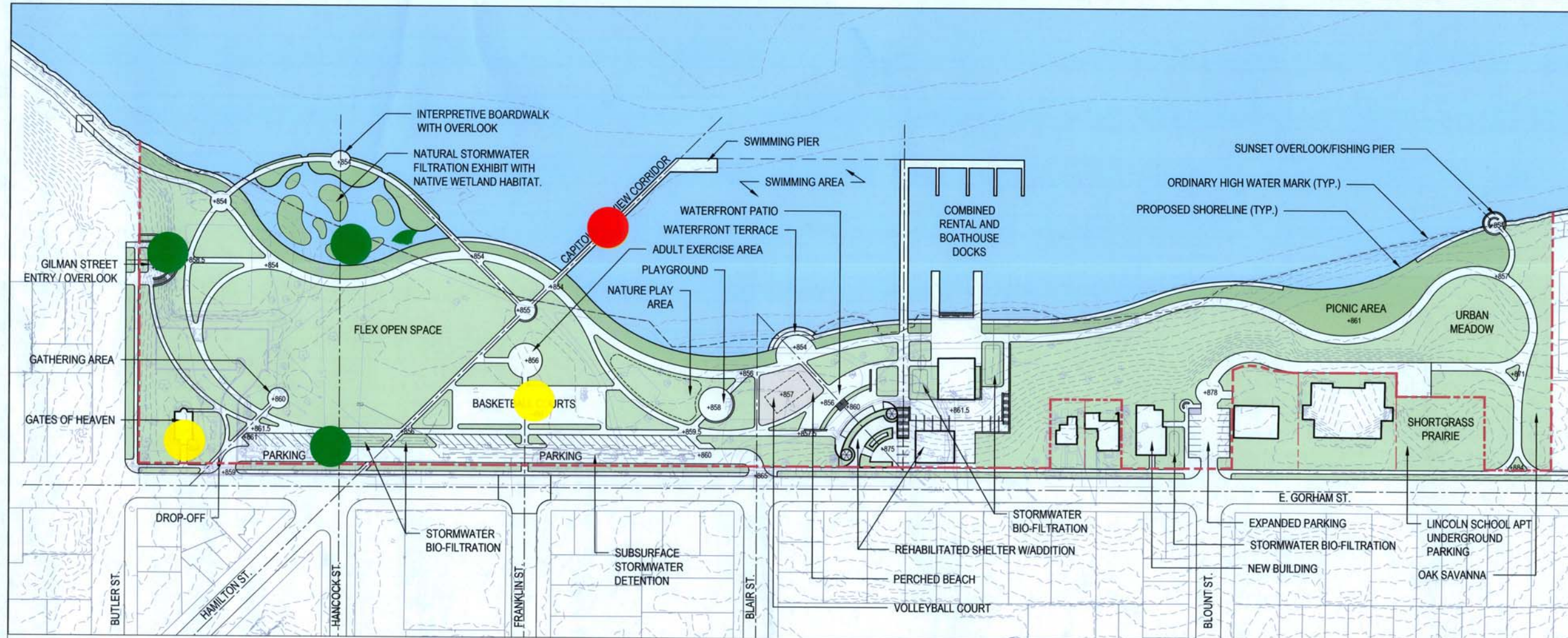
SCALE: 1" = 80'-0"



James Madison Park

Master Plan - Option A

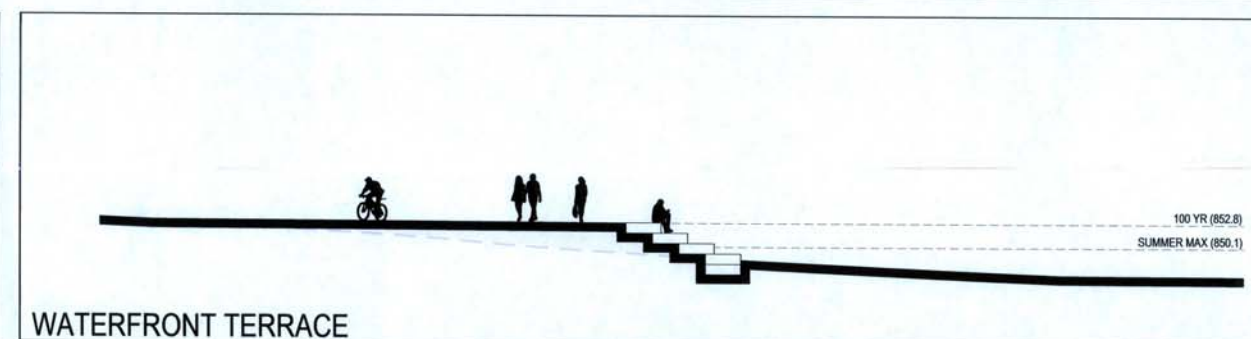
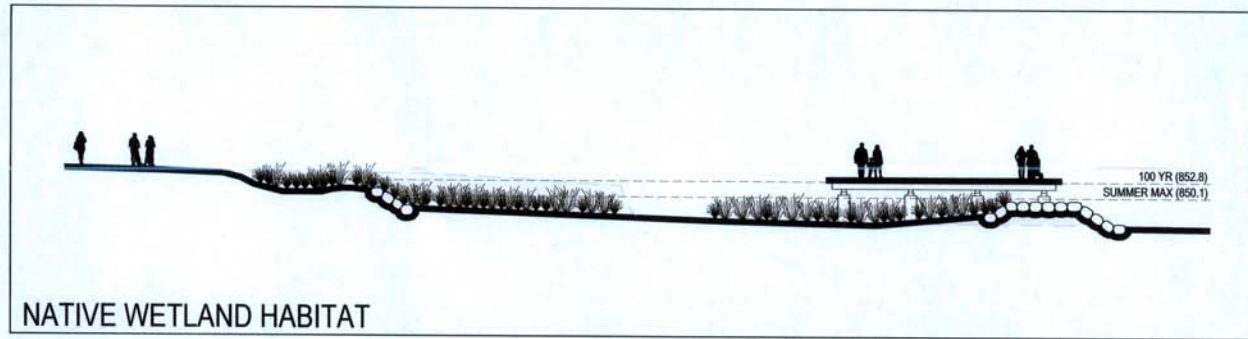
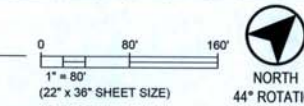
4



Public Comments

A JAMES MADISON PARK MASTER PLAN - OPTION A

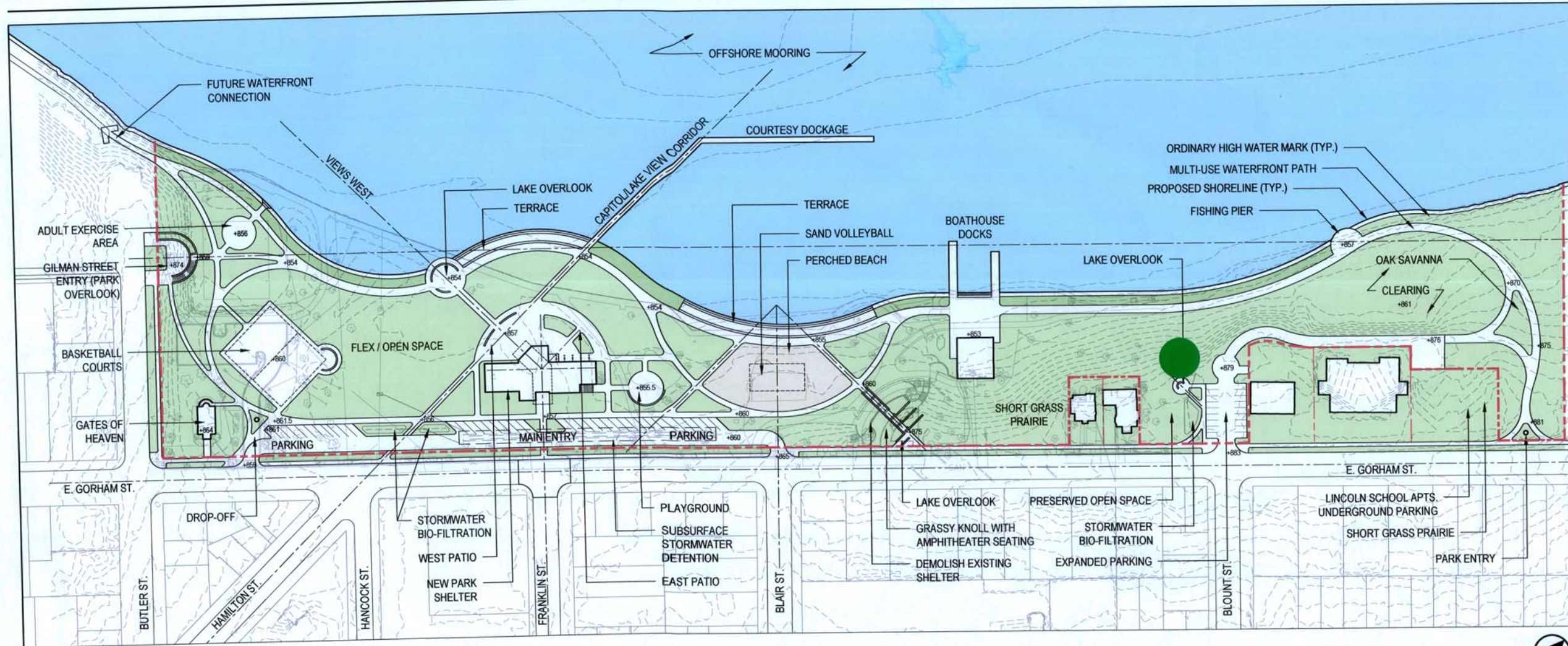
SCALE: 1" = 80'-0"



James Madison Park

Master Plan - Option B

4

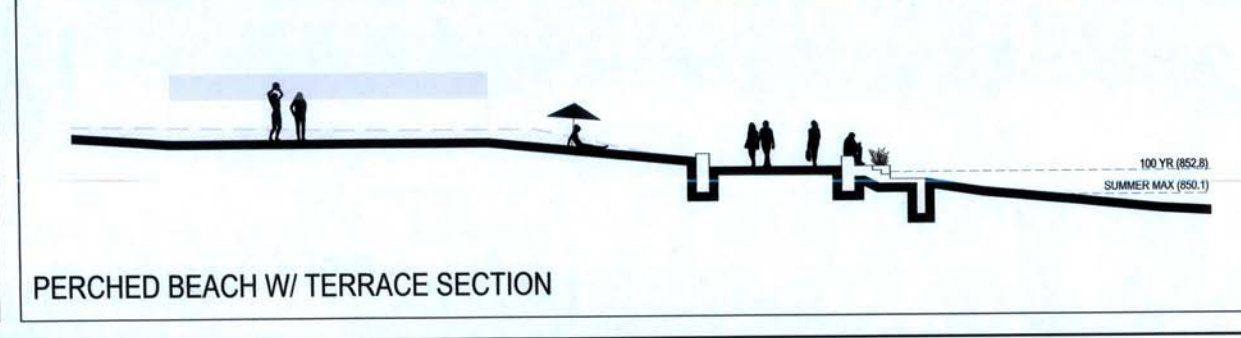
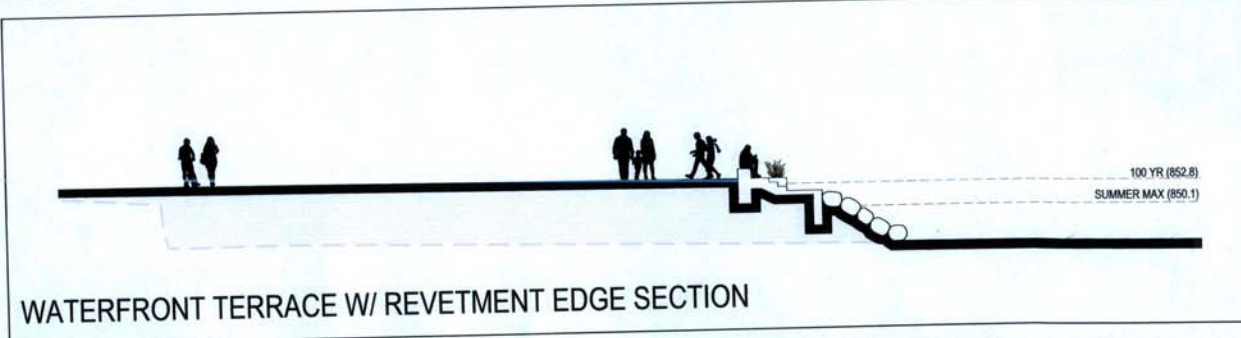
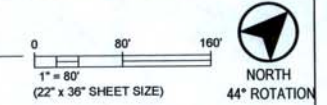


Public Comments

Main Shelter location permits centralization of public activity away from rowing club

B JAMES MADISON PARK MASTER PLAN - OPTION B

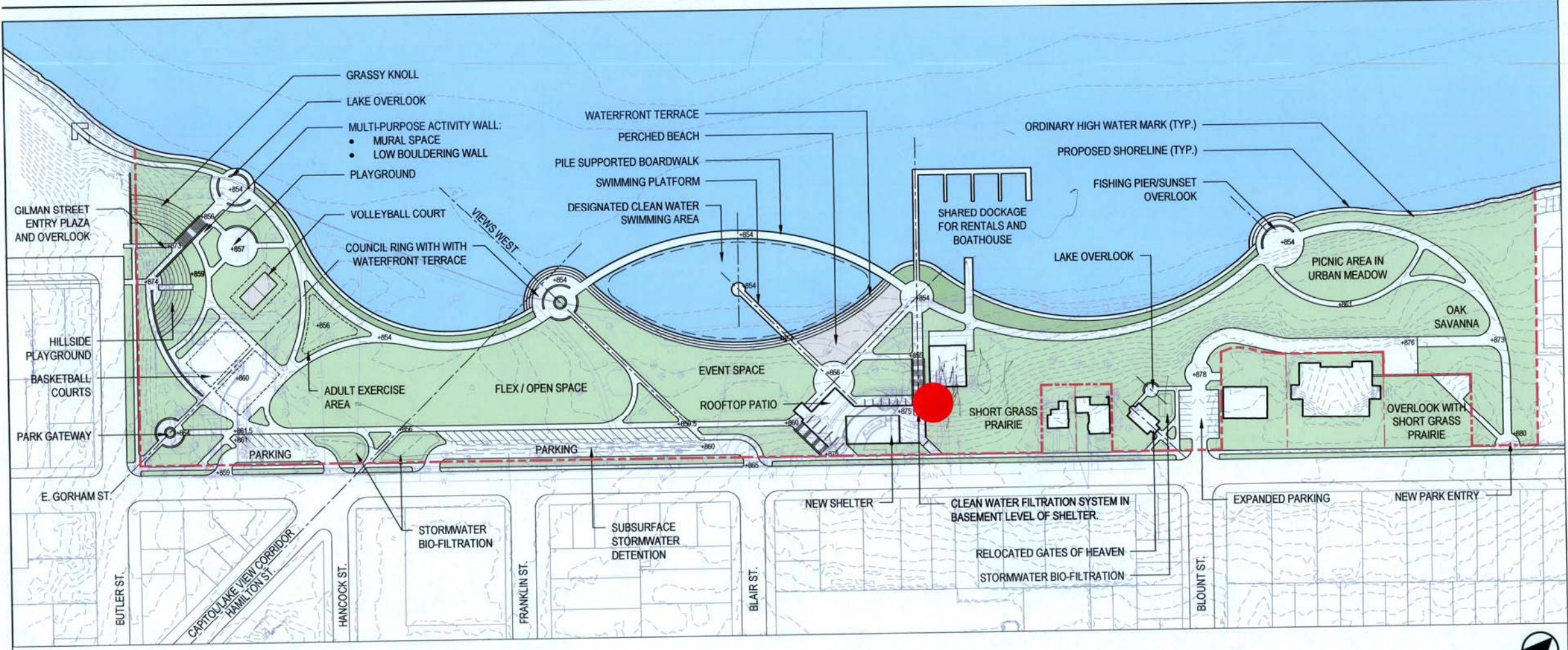
SCALE: 1" = 80'-0"



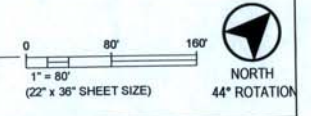
4

James Madison Park

Master Plan - Option C



C JAMES MADISON PARK MASTER PLAN - OPTION C
SCALE: 1" = 80'-0"

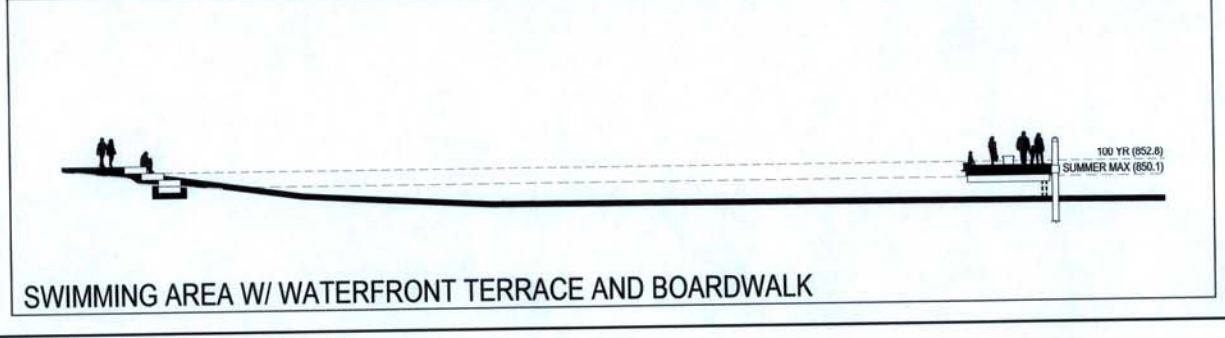
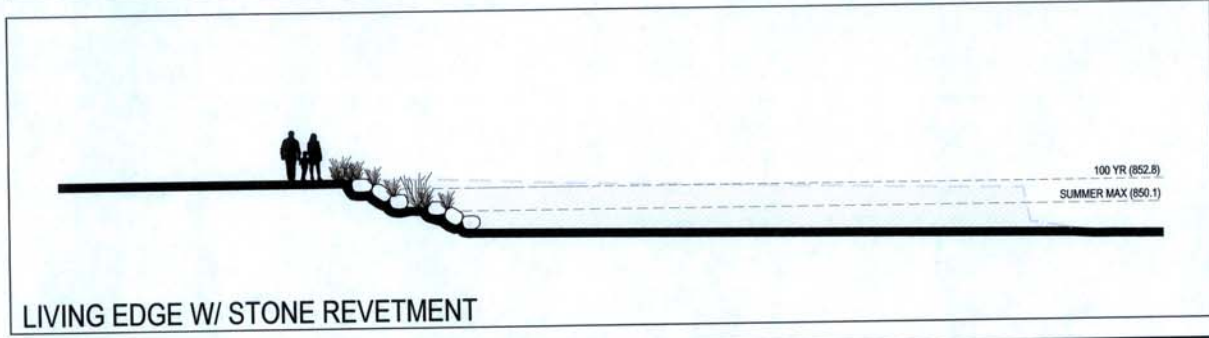


Public Comments

Rowing shell
Access to Bernards is
not feasible in this concept
water too distant for comfort

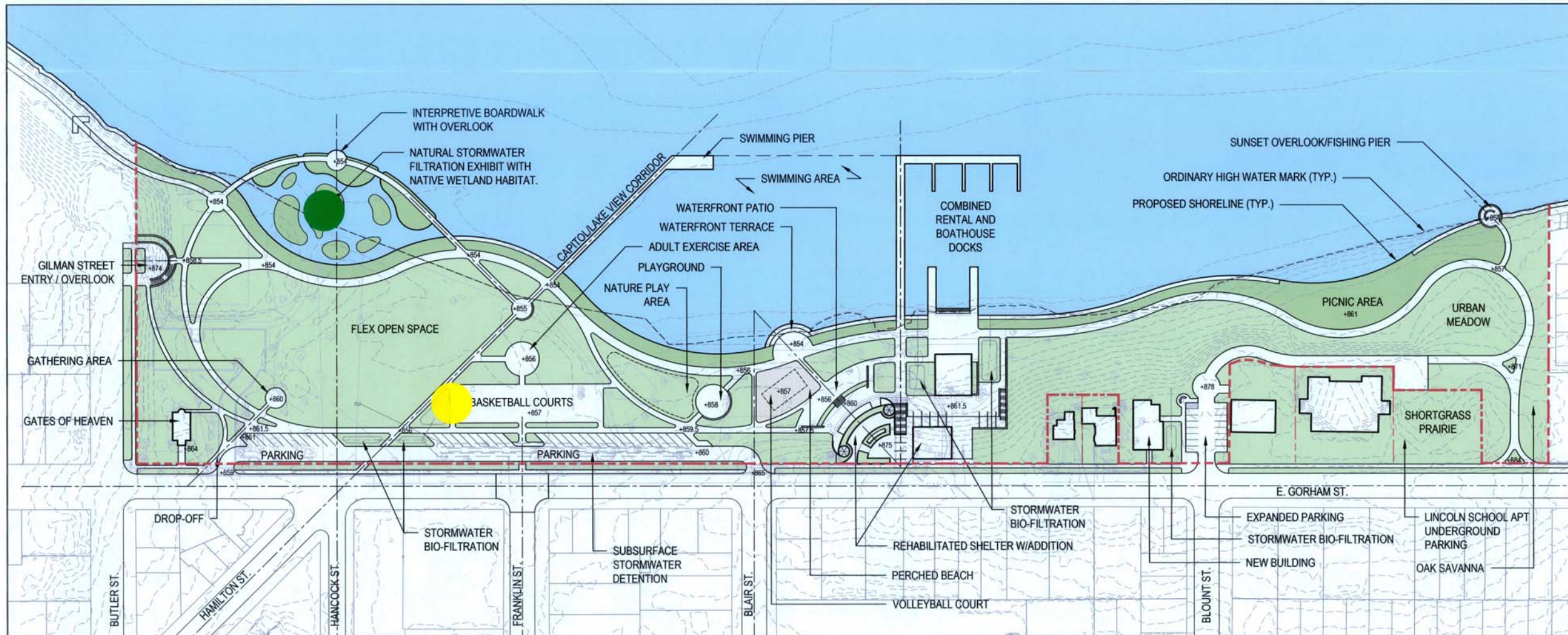
Community gardens -
high interest from
adjacent neighbors
+ perhaps the only
possible space to
site them.

Terrace Behind
City Houses Collins and
other 2 houses.
Move Gates of Heaven



James Madison Park

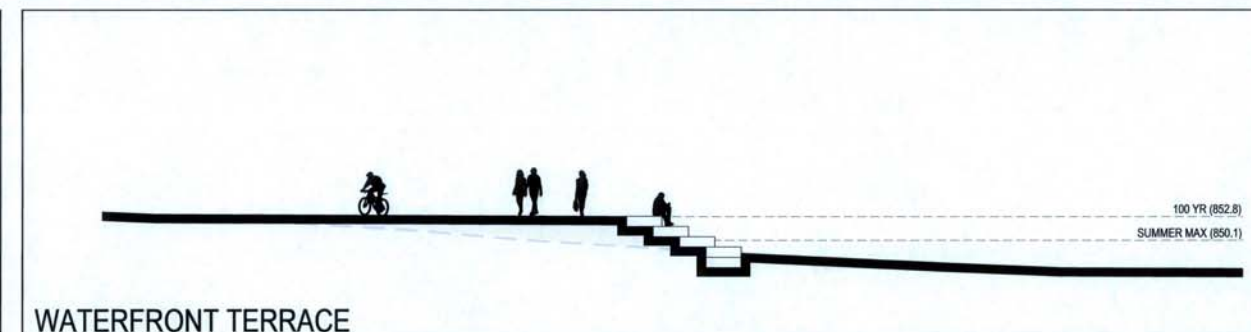
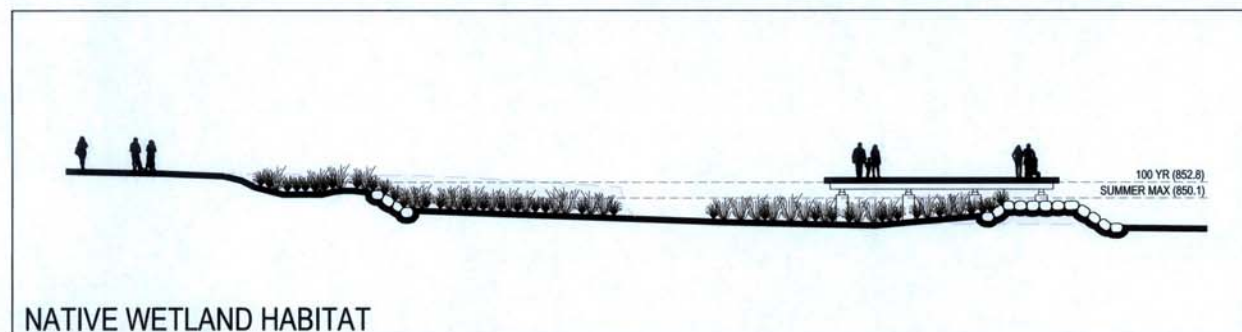
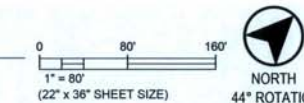
Master Plan - Option A



Public Comments

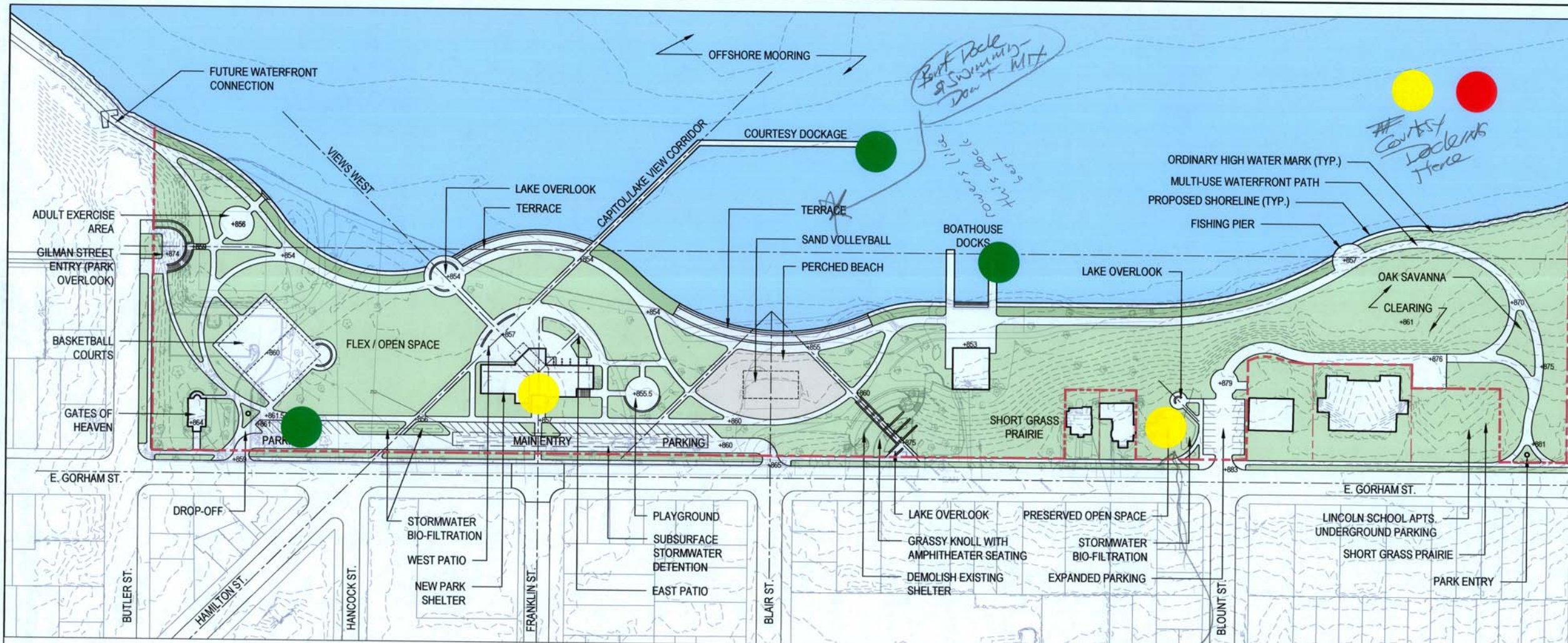
A JAMES MADISON PARK MASTER PLAN - OPTION A

SCALE: 1" = 80'-0"



James Madison Park

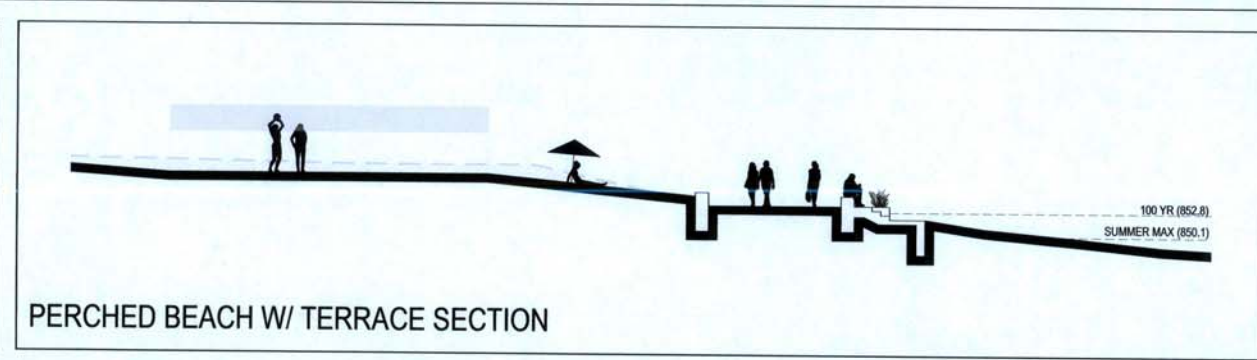
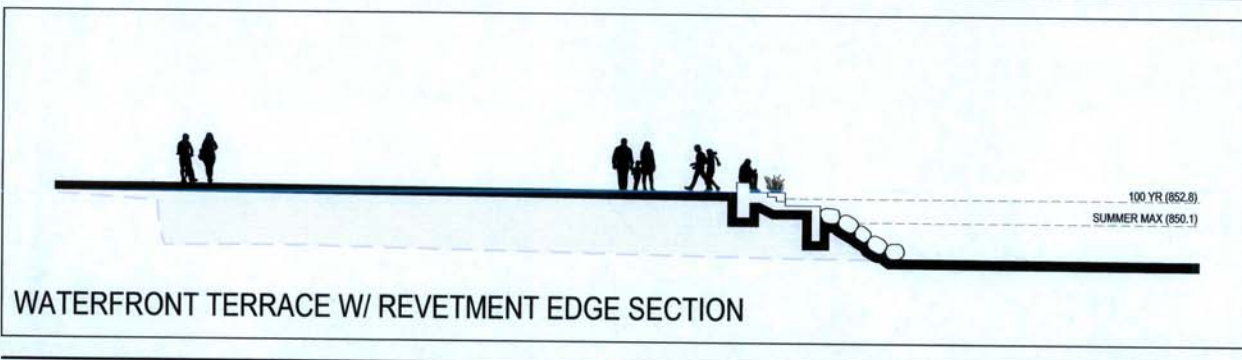
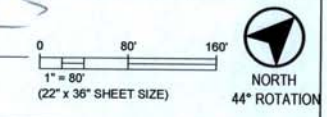
Master Plan - Option B



Public Comments

+ Central Bathrooms Here

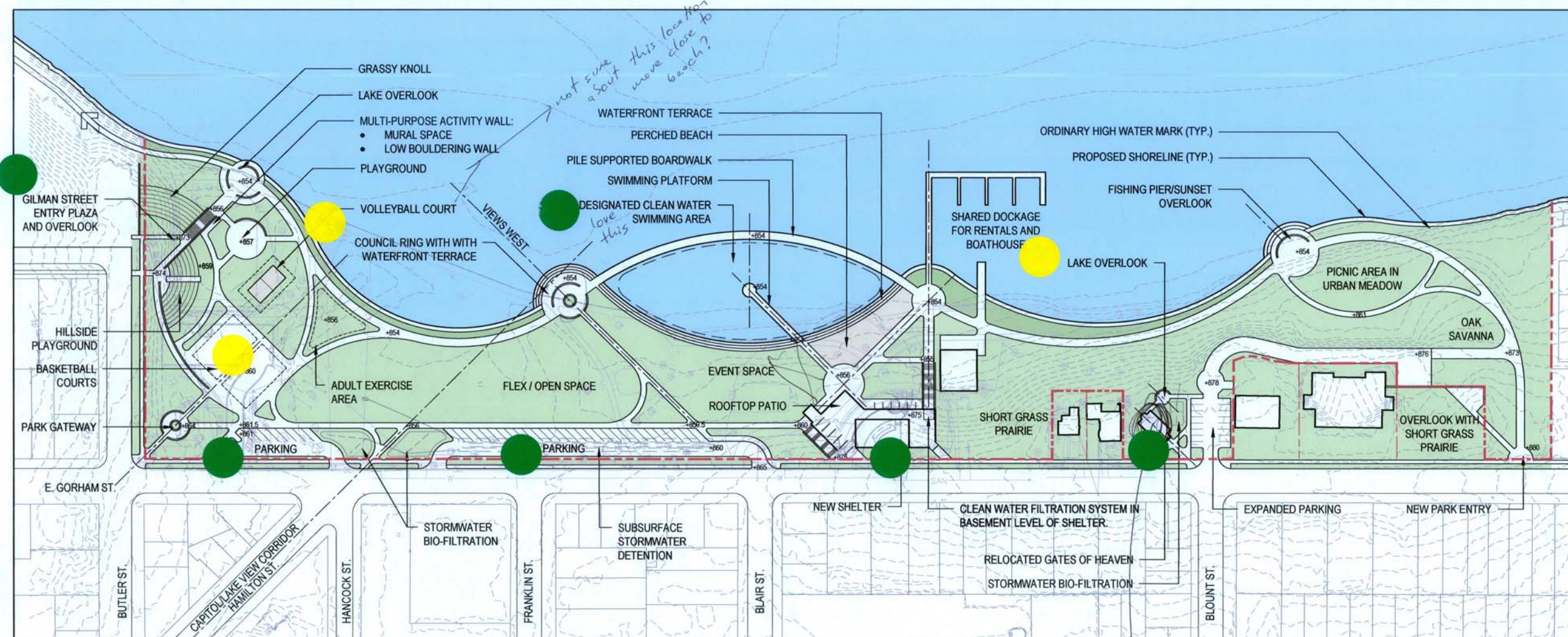
B JAMES MADISON PARK MASTER PLAN - OPTION B
SCALE: 1" = 80'-0"



James Madison Park

Master Plan - Option C

5

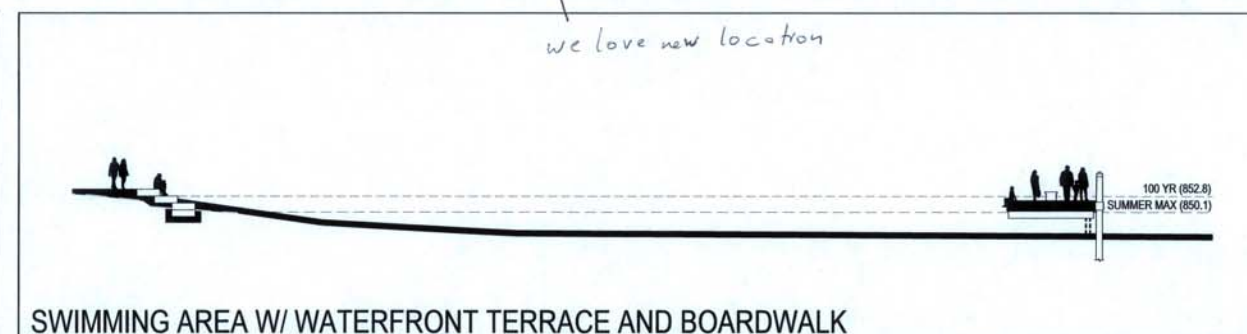
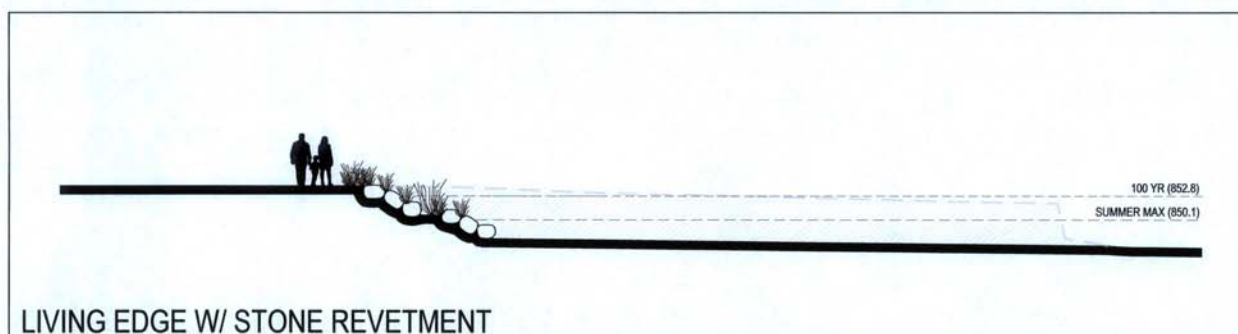
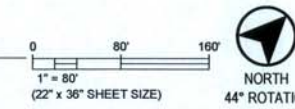


Public Comments

- concerned about moving shoreline further away from the boathouse (please consider UW Boathouse)
- concerned about awkward docking for shells
- don't like basketball courts in location, prefer option B
- would prefer public docks or mooring to provide access from lake to park
- shelter: we like
 - the location
 - café
 - rentals
 - new shelter

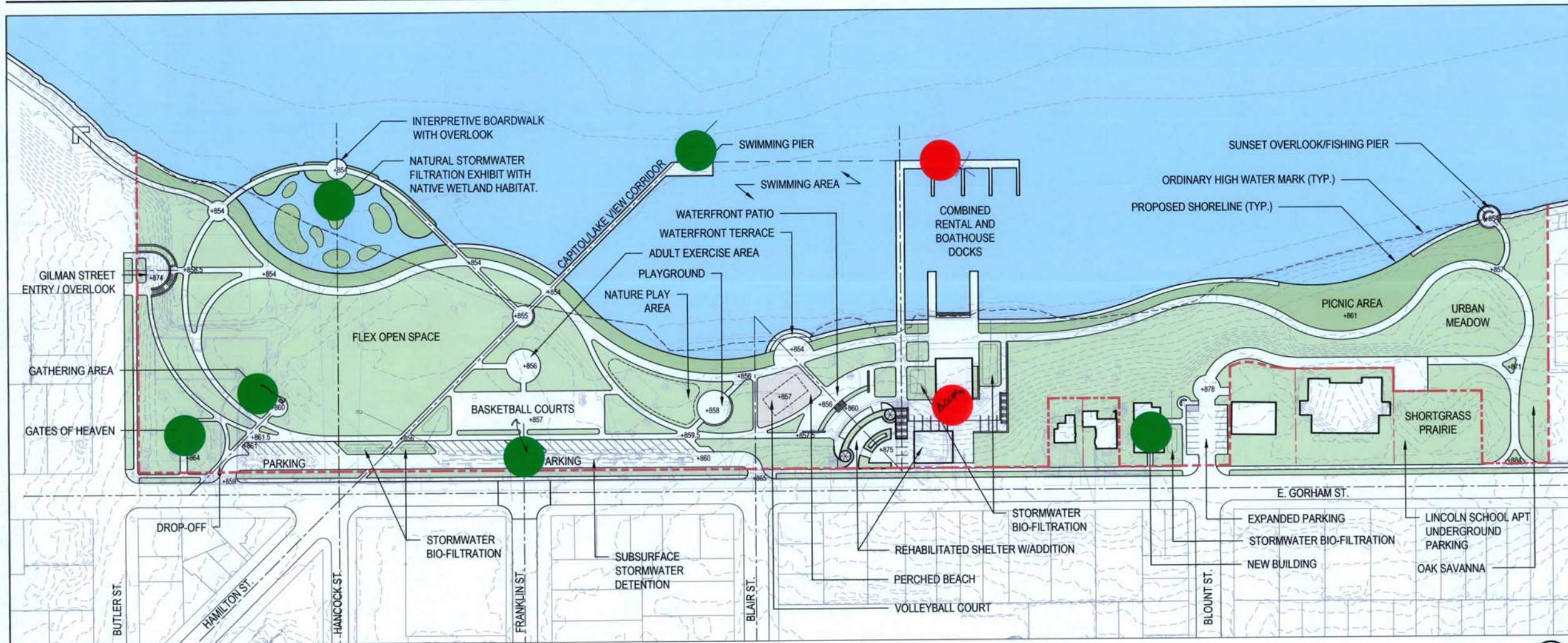
C JAMES MADISON PARK MASTER PLAN - OPTION C

SCALE: 1" = 80'-0"

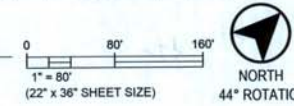


James Madison Park 6

Master Plan - Option A



A JAMES MADISON PARK MASTER PLAN - OPTION A
SCALE: 1" = 80'-0"



Public Comments

NO - BOATHOUSE FUNCTION DIMINISHED IN THIS CONCEPT - ACCESS TO SECOND FLOOR FOR BOAT REPAIR.

LIKE - GATES OF HEAVEN HAS APPROPRIATE CONTEXT

LIKE - STORMWATER SOFTENED EDGE.

? ADULT EXERCISE AREA SANDS DIRTY.

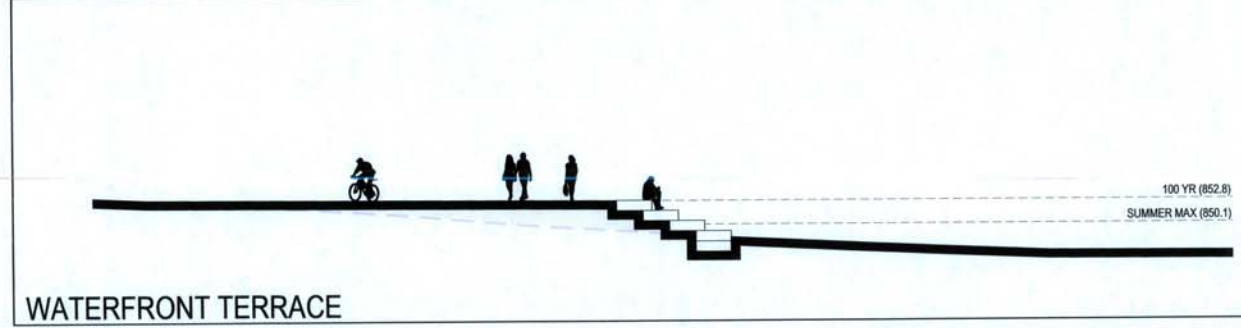
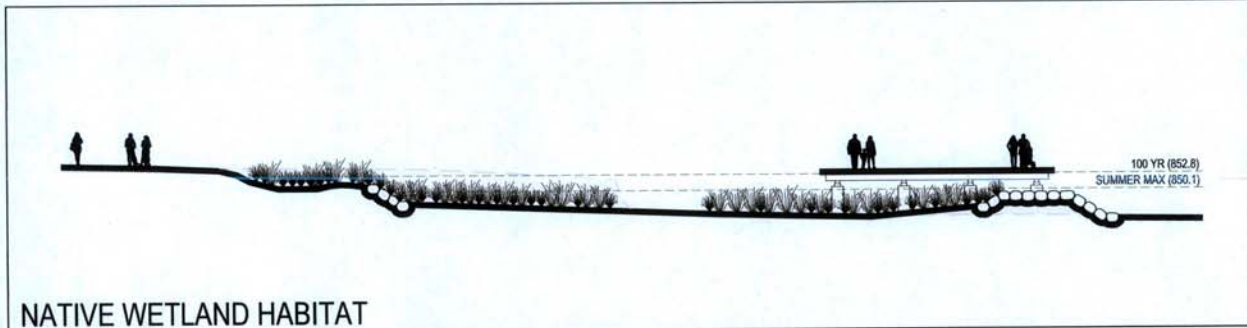
LIKE - DOCK. - Possible dark sky area for observing stars.

Like extra space for Frisbee and football.

Like - Placeholder for historic building

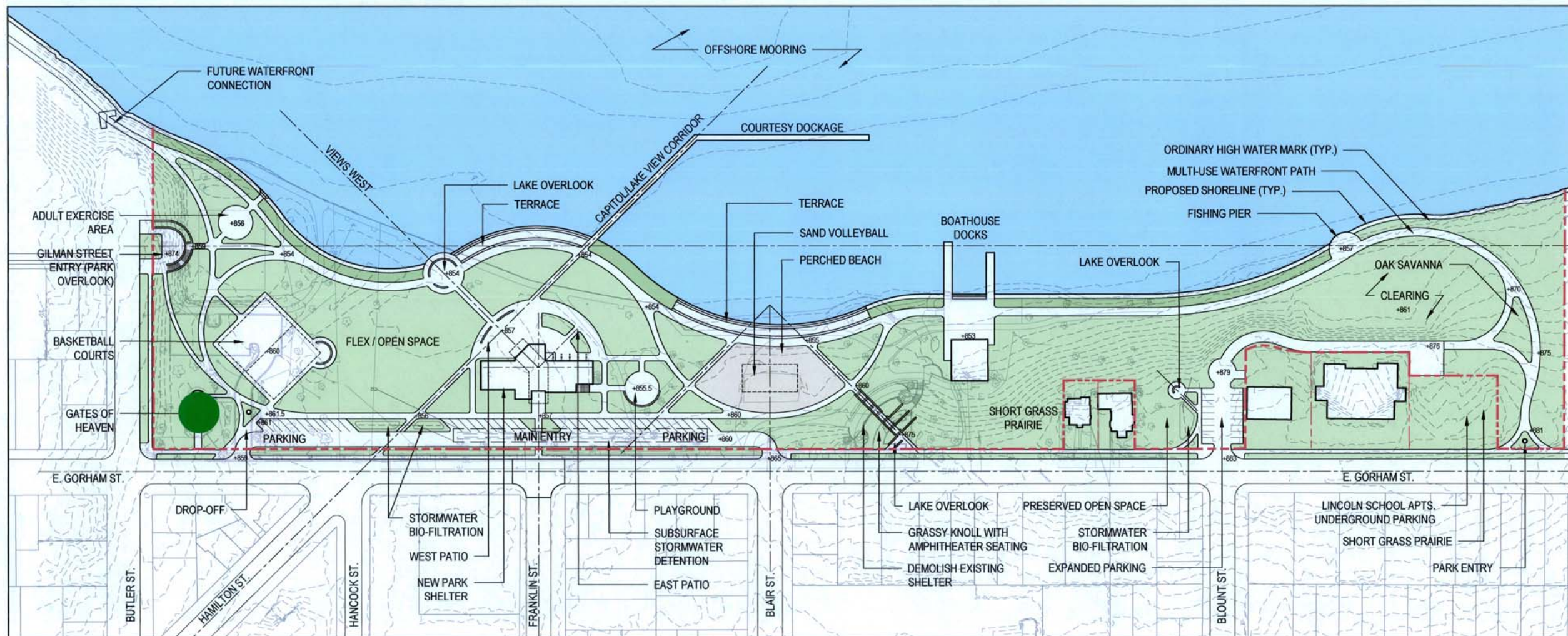
Like Gathering area near Gates of Heaven

No - Rowing boats have a hard time with current dock configuration



James Madison Park 6

Master Plan - Option B



Public Comments

LIKE - LOCATION OF GATES OF HEAVEN.
 LIKE - CENTRAL LOCATION OF RESTROOMS

B JAMES MADISON PARK MASTER PLAN - OPTION B

SCALE: 1" = 80'-0"

