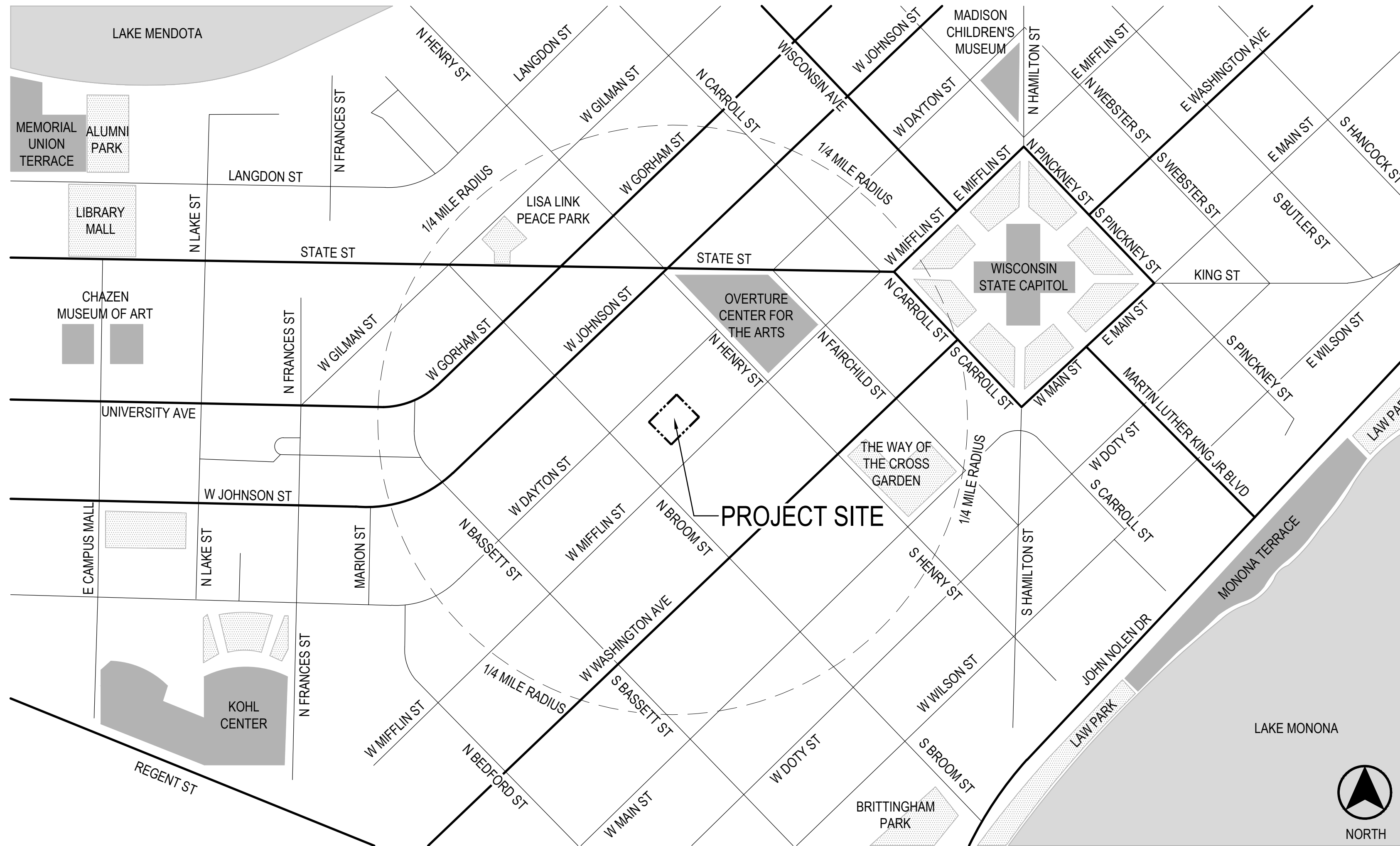


MADISON SENIOR CENTER COURTYARD

330 WEST MIFFLIN STREET
MADISON, WI 53703



1 PROJECT LOCATION MAP
SCALE: NTS

SHEET INDEX

- T000 - TITLE SHEET
- T100 - CONTEXTUAL SITE INFORMATION
- C100 - SITE SURVEY
- C200 - PRELIMINARY GRADING PLAN
- L100 - LAYOUT AND MATERIAL PLAN
- L200 - PLANTING PLAN
- L300 - LANDSCAPE RENDERINGS
- L301 - LANDSCAPE RENDERINGS
LANDSCAPE CONCEPT PLAN RENDERING
- E100 - CONCEPTUAL ELECTRICAL PLAN
- E200 - CONCEPTUAL ELECTRICAL DETAILS
- E300 - ELECTRICAL CUT SHEETS

PROJECT INFORMATION

CLIENT
CITY OF MADISON PARKS DIVISION
210 MARTIN LUTHER KING JR. BLVD
MADISON, WI 53703
CONTACT: MIKE STURM 608.267.4921

STRUCTURAL & ELECTRICAL ENGINEER
MEAD & HUNT
2440 DEMING WAY
MIDDLETON, WI 53562
CONTACT: MARK STIFTER 608.443.0561

LANDSCAPE ARCHITECT
SAIKI DESIGN, INC.
1110 S. PARK ST
MADISON, WI 53715
CONTACT: ABBIE MOILLIEN 608.405.8149

CIVIL ENGINEER
BURSE SURVEYING & ENGINEERING
2801 INTERNATIONAL LN | SUITE 101
MADISON, WI 53704
CONTACT: MICHELLE BURSE 608.250.9263

NO.	REVISION	DATE
	UDC FINAL APPROVAL SUBMITTAL	09/26/2022
	UDC INFORMATIONAL SUBMITTAL	08/01/2022

CLIENT
CITY OF MADISON PARKS DIVISION

210 MARTIN LUTHER KING JR. BLVD
MADISON, WI 53703

PROJECT
MADISON SENIOR CENTER COURTYARD

330 WEST MIFFLIN STREET
MADISON, WI 53703

DRAWING
TITLE SHEET

SCALE
NTS

DATE
09/26/2022

DRAWN BY
SH

CHECKED
AM

APPROVED

DEPT. APPROVAL

SEAL

DEPT. PROJECT NO.

CONSULTANT'S PROJECT NO.
2022-001

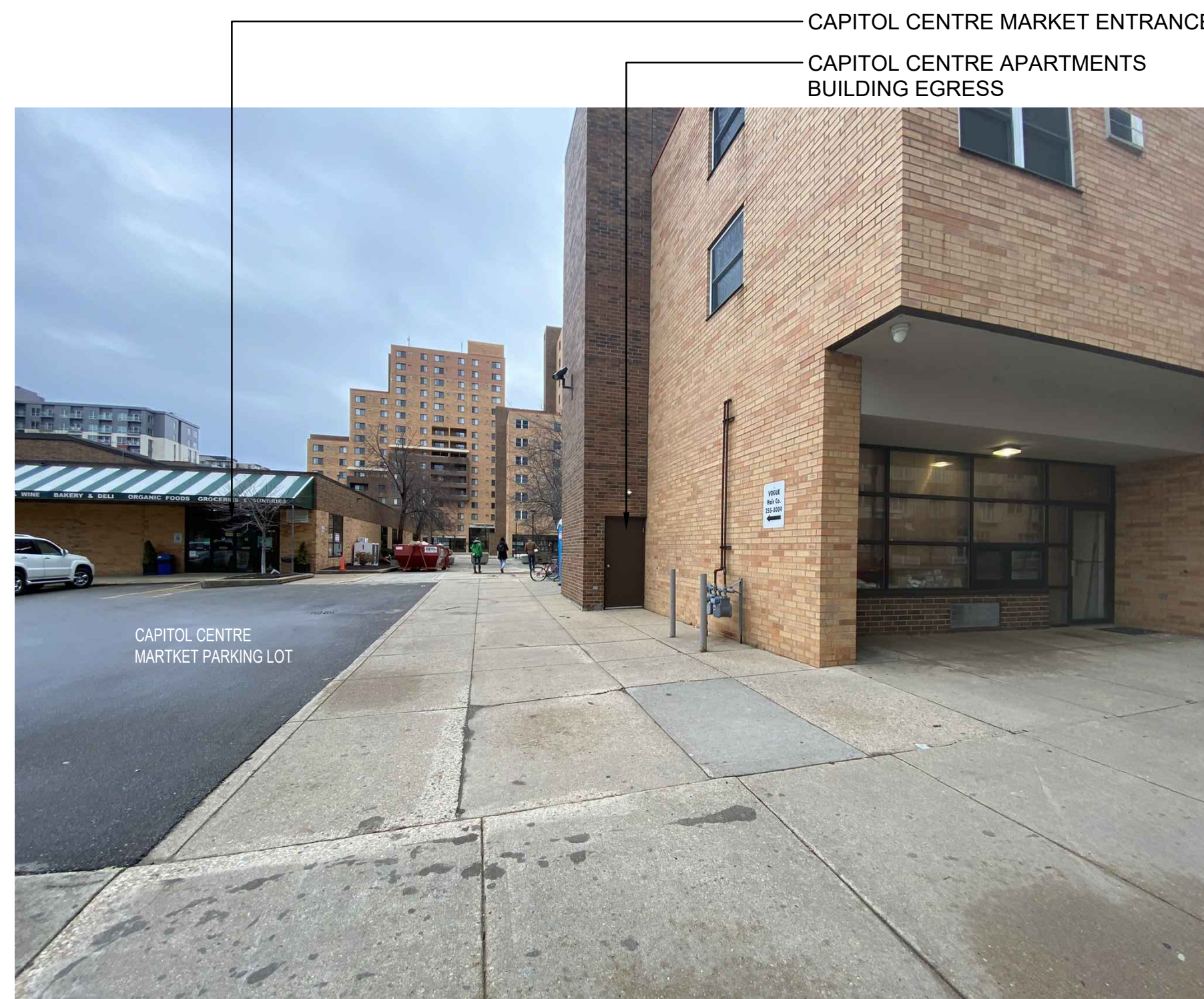
TENDER NO.

**NOT FOR
CONSTRUCTION**

T000



1 W MIFFLIN ST ENTRANCE - FACING SOUTHEAST
SCALE:NTS



2 W MIFFLIN ST ENTRANCE - FACING NORTHWEST
SCALE:NTS



3 W MIFFLIN ST ENTRANCE - CAPITOL CENTRE MARKET
SCALE:NTS



4 W DAYTON ST ENTRANCE - FACING NORTHWEST
SCALE:NTS



2 W DAYTON ST ENTRANCE - FACING SOUTHEAST
SCALE:NTS



3 W DAYTON ST ENTRANCE - CAPITOL CENTRE MARKET
SCALE:NTS

CLIENT		
UDC FINAL APPROVAL SUBMITTAL		09/26/2022
UDC INFORMATIONAL SUBMITTAL		08/01/2022
NO.	REVISION	DATE

CITY OF MADISON PARKS DIVISION
210 MARTIN LUTHER KING JR. BLVD
MADISON, WI 53703

PROJECT
MADISON SENIOR CENTER COURTYARD
330 WEST MIFFLIN STREET
MADISON, WI 53703

DRAWING
CONTEXTUAL SITE INFORMATION

SCALE	DATE
NTS	09/26/2022
DRAWN BY	CHECKED
SH	AM
APPROVED	DEPT. APPROVAL
SEAL	SEAL

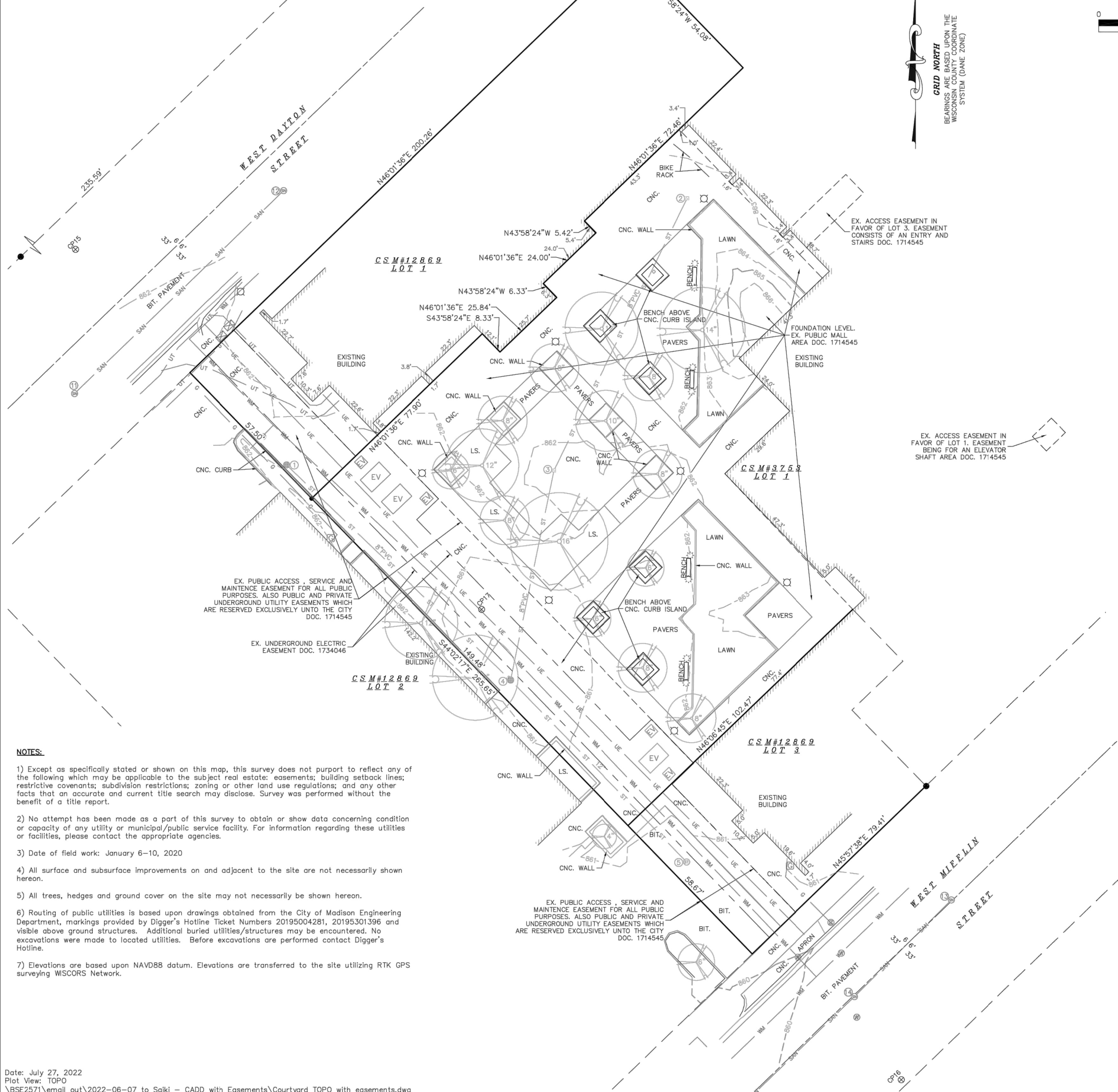
NOT FOR CONSTRUCTION

DEPT. PROJECT NO.	DRAWING NO.
CONSULTANT'S PROJECT NO. 2022-001	T100
TENDER NO.	

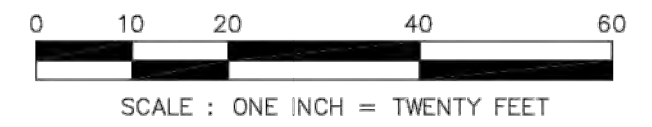


TOPOGRAPHIC SURVEY

PART OF LOT 1, CERTIFIED SURVEY MAP NUMBER 3753, AS RECORDED IN VOLUME 15 OF CERTIFIED SURVEY MAPS, ON PAGES 222-227, AS DOCUMENT NUMBER 1714539, ALSO PART OF LOT 1-3, CERTIFIED SURVEY MAP NUMBER 12869, AS RECORDED IN VOLUME 81 OF CERTIFIED SURVEY MAPS, ON PAGES 303-313, AS DOCUMENT NUMBER 4640103, ALL IN DANE COUNTY REGISTRY, LOCATED IN THE NORTHWEST QUARTER OF THE NORTHEAST QUARTER OF SECTION 23, TOWNSHIP 07 NORTH, RANGE 09 EAST, CITY OF MADISON, DANE COUNTY, WISCONSIN.



GRID NORTH
BEARINGS ARE BASED UPON THE
WISCONSIN COORDINATE
SYSTEM (DANE ZONE)



LEGEND			
⊙	CONTROL POINT	⊞	AIR CONDITIONER
●	3/4" SOLID IRON ROD FOUND	⊞	TV PEDESTAL
⊙	1" IRON PIPE FOUND UNLESS NOTED	⊞	ELECTRIC PEDESTAL
X	FOUND CHISELED "X" IN CONCRETE	⊞	UTILITY POLE
●	FOUND NAIL	⊞	LIGHT POLE
—OH—	OVERHEAD UTILITY WIRE	⊞	GROUND LIGHT
—G—	BURIED GAS LINE	⊞	TELEPHONE PEDESTAL
—WM—	WATER MAIN	⊞	FIRE HYDRANT
—SAN—	SANITARY SEWER	—	SIGN
—ST—	STORM SEWER	—	GUY WIRE
—UT—	BURIED TELEPHONE	EV	ELECTRIC VAULT
—UE—	BURIED ELECTRIC	●	BOLLARD
—UV—	BURIED CABLE ACCESS TELEVISION LINE	⊞	STORM SEWER INLET
—FO—	BURIED FIBER OPTIC	⊞	ELECTRIC MANHOLE
●	WATER VALVE	⊞	SQUARE STORM SEWER CATCH BASIN
●	GAS VALVE	⊞	STORM SEWER MANHOLE
⊞	GAS METER	⊞	ROUND CATCH BASIN
⊞	DECIDUOUS TREE (DBH IN INCHES)	⊞	COMMUNICATIONS HANDHOLE
⊞	CONIFEROUS TREE (DBH IN INCHES)	⊞	SANITARY SEWER MANHOLE
		()	INDICATES RECORDED AS

DISTANCES ARE MEASURED TO THE NEAREST HUNDREDTH OF A FOOT. BUILDINGS ARE MEASURED TO THE NEAREST TENTH OF A FOOT.

NUMBER	RIM/TC	ELEVATION	ELEVATION	ELEVATION	ELEVATION	DESCRIPTION
1	861.38 SE	858.79	S	858.83		STORM SEWER CATCH BASIN
2	862.73 FLR	860.18				STORM SEWER CATCH BASIN 1.1' X 1.1'
3	861.78 FLR	859.27				STORM SEWER CATCH BASIN 1.1' X 1.1'
4	860.19 NE	857.80	NW	856.42	SE 856.31	STORM SEWER MANHOLE
5	859.95 SW	855.22	NW	855.40	NE 855.55	STORM SEWER CATCH BASIN
11	861.41 NE	853.64	NW	853.91	SW 853.57 SE 854.20	SANITARY SEWER MANHOLE
12	862.36 NE	854.48	SW	854.34		SANITARY SEWER MANHOLE
13	861.17 SW	854.19	NE	854.22	NW 854.46	SANITARY SEWER MANHOLE
14	860.55 NE	853.93	SE	854.13	SW 853.93	SANITARY SEWER MANHOLE
15	859.04 SW	853.02	NE	853.06		SANITARY SEWER MANHOLE

- NOTES:**
- 1) Except as specifically stated or shown on this map, this survey does not purport to reflect any of the following which may be applicable to the subject real estate: easements; building setback lines; restrictive covenants; subdivision restrictions; zoning or other land use regulations; and any other facts that an accurate and current title search may disclose. Survey was performed without the benefit of a title report.
 - 2) No attempt has been made as a part of this survey to obtain or show data concerning condition or capacity of any utility or municipal/public service facility. For information regarding these utilities or facilities, please contact the appropriate agencies.
 - 3) Date of field work: January 6-10, 2020
 - 4) All surface and subsurface improvements on and adjacent to the site are not necessarily shown hereon.
 - 5) All trees, hedges and ground cover on the site may not necessarily be shown hereon.
 - 6) Routing of public utilities is based upon drawings obtained from the City of Madison Engineering Department, markings provided by Digger's Hotline Ticket Numbers 20195004281, 20195301396 and visible above ground structures. Additional buried utilities/structures may be encountered. No excavations were made to located utilities. Before excavations are performed contact Digger's Hotline.
 - 7) Elevations are based upon NAVD88 datum. Elevations are transferred to the site utilizing RTK GPS surveying WISCORS Network.

DESCRIPTION FURNISHED:
PART OF LOT 1, CERTIFIED SURVEY MAP NUMBER 3753, AS RECORDED IN VOLUME 15 OF CERTIFIED SURVEY MAPS, ON PAGES 222-227, AS DOCUMENT NUMBER 1714539, ALSO PART OF LOT 1-3, CERTIFIED SURVEY MAP NUMBER 12869, AS RECORDED IN VOLUME 81 OF CERTIFIED SURVEY MAPS, ON PAGES 303-313, AS DOCUMENT NUMBER 4640103, ALL IN DANE COUNTY REGISTRY, LOCATED IN THE NORTHWEST QUARTER OF THE NORTHEAST QUARTER OF SECTION 23, TOWNSHIP 07 NORTH, RANGE 09 EAST, CITY OF MADISON, DANE COUNTY, WISCONSIN.

SURVEYED FOR :
CITY OF MADISON

SURVEYED BY :
Burse
surveying & engineering llc
2801 International Lane, Suite 101
Madison, WI 53704 608.250.9263
Fax: 608.250.9266
email: mburse@bse-inc.net
www.bursesurveyengr.com

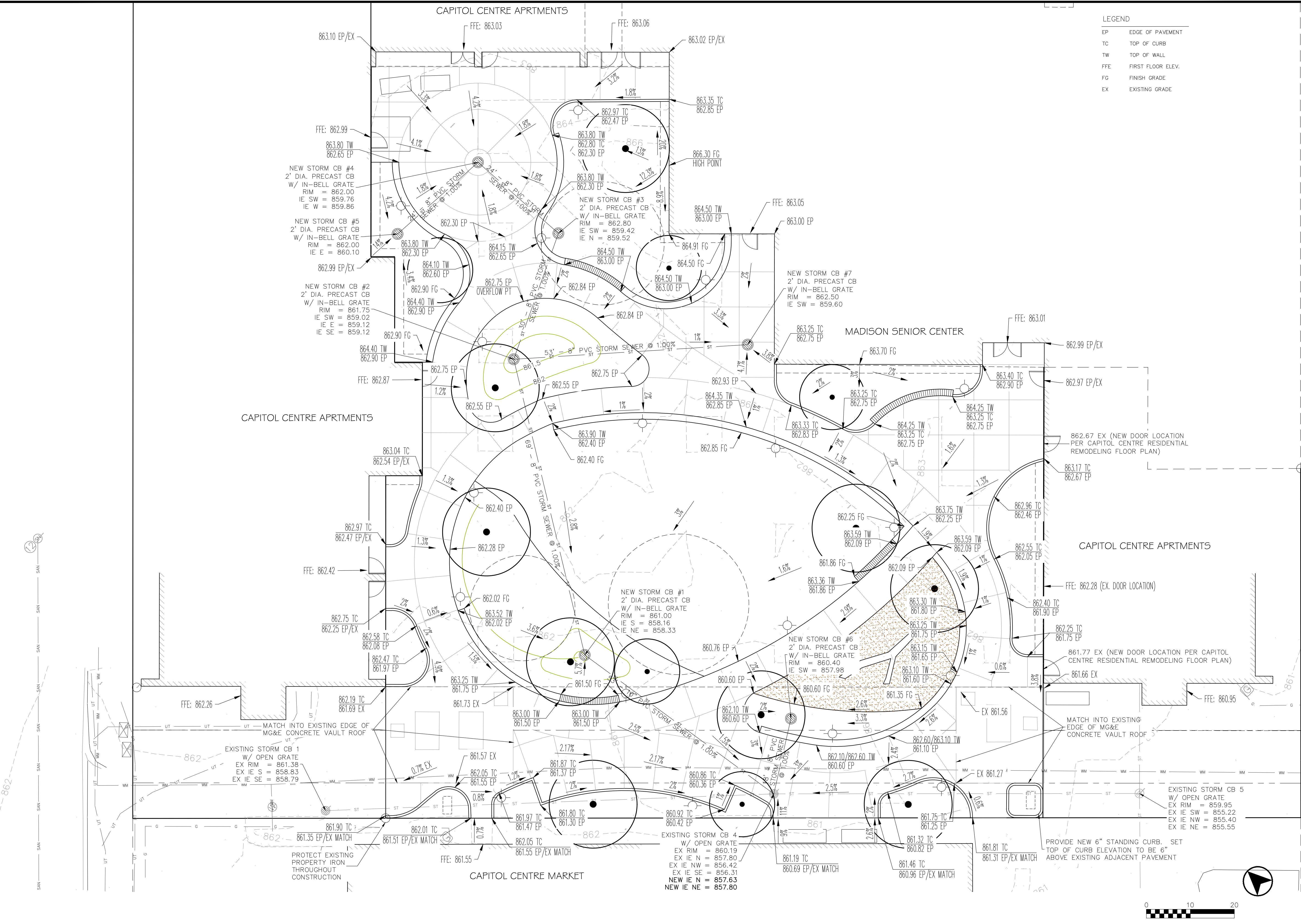
NO.	REVISION	DATE
	UDC INFORMATIONAL SUBMITTAL	09/26/2022
	UDC INFORMATIONAL SUBMITTAL	08/01/2022
CLIENT		
CITY OF MADISON PARKS DIVISION		
210 MARTIN LUTHER KING JR. BLVD MADISON, WI 53703		
PROJECT		
MADISON SENIOR CENTER COURTYARD		
330 WEST MIFFLIN STREET MADISON, WI 53703		
DRAWING		
SITE SURVEY		
SCALE	DATE	
1" = 20'-0"	09/26/2022	
DRAWN BY	CHECKED	REVIEWED
SH	AM	
APPROVED	DEPT. APPROVAL	
SEAL	SEAL	
NOT FOR CONSTRUCTION		
DEPT. PROJECT NO.	DRAWING NO.	
2022-001	C100	
CONSULTANT'S PROJECT NO.	TENDER NO.	



2801 INTERNATIONAL LANE, SUITE 101
MADISON, WISCONSIN 53704
PHONE: 608.250.5263

LEGEND

EP	EDGE OF PAVEMENT
TC	TOP OF CURB
TW	TOP OF WALL
FFE	FIRST FLOOR ELEV.
FG	FINISH GRADE
EX	EXISTING GRADE



UDC FINAL APPROVAL SUBMITTAL	09/26/2022	
UDC INFORMATIONAL SUBMITTAL	08/01/2022	
NO.	REVISION	DATE

CLIENT
CITY OF MADISON PARKS DIVISION
210 MARTIN LUTHER KING JR. BLVD
MADISON, WI 53703

PROJECT
MADISON SENIOR CENTER COURTYARD
330 WEST MIFFLIN STREET
MADISON, WI 53703

DRAWING
PRELIMINARY GRADING PLAN

SCALE
1" = 10'-0"

DATE
09/26/2022

DRAWN BY
BJB

CHECKED
MLB

APPROVED

DEPT APPROVAL

SEAL

DEPT PROJECT NO.

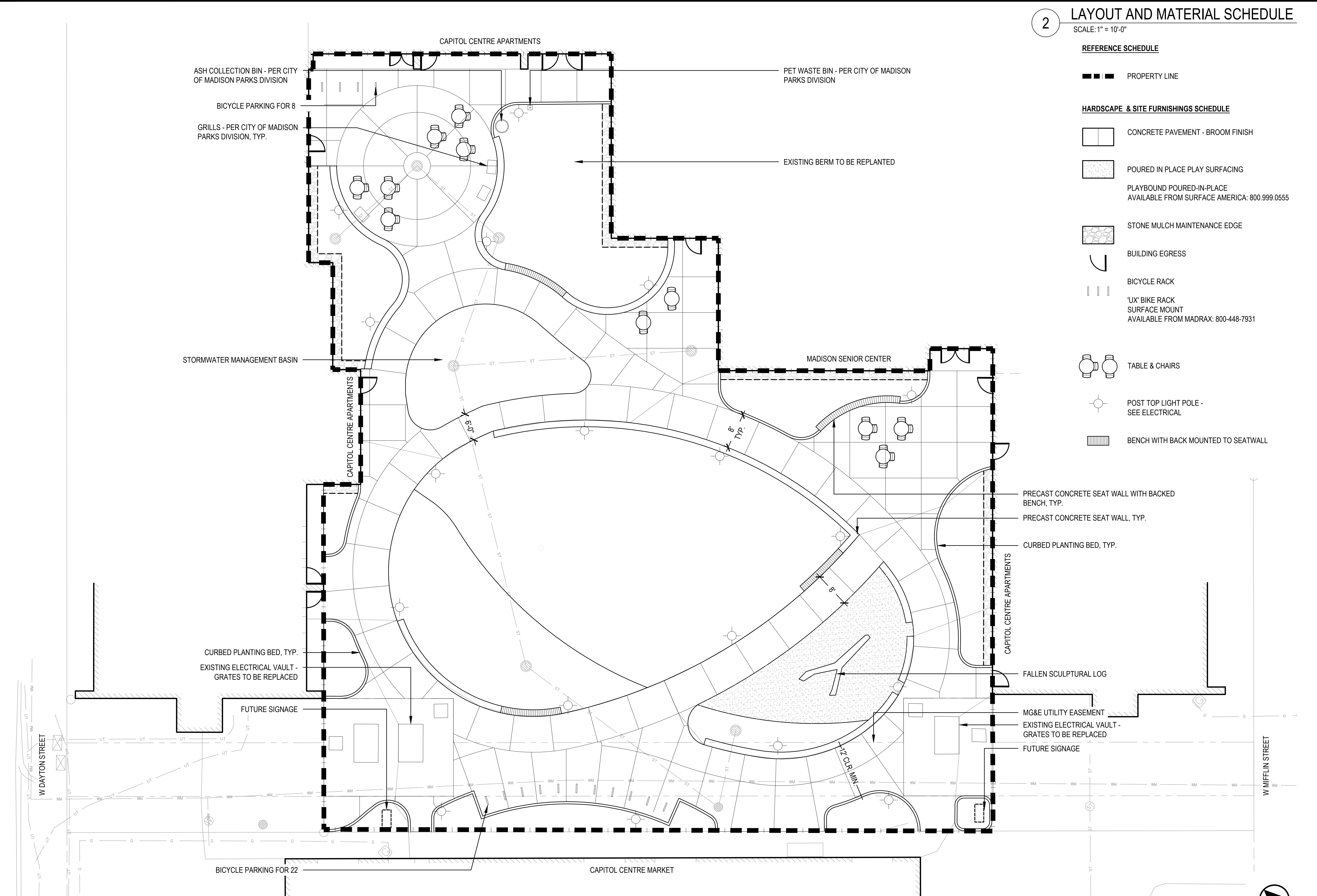
DRAWING NO.

CONSULTANT'S PROJECT NO.

TENDER NO.

NOT FOR CONSTRUCTION

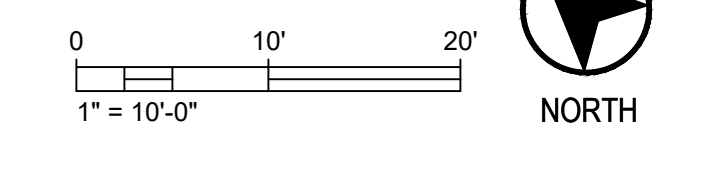
C200



2 LAYOUT AND MATERIAL SCHEDULE
SCALE: 1" = 10'-0"

- REFERENCE SCHEDULE**
- PROPERTY LINE
- HARDSCAPE & SITE FURNISHINGS SCHEDULE**
- CONCRETE PAVEMENT - BROOM FINISH
 - POURED IN PLACE PLAY SURFACING
 - PLAYBOUND POURED-IN-PLACE AVAILABLE FROM SURFACE AMERICA: 800.999.0555
 - STONE MULCH MAINTENANCE EDGE
 - BUILDING EGRESS
 - BICYCLE RACK
 - 'UX' BIKE RACK SURFACE MOUNT AVAILABLE FROM MADRAX: 800-448-7931
 - TABLE & CHAIRS
 - POST TOP LIGHT POLE - SEE ELECTRICAL
 - BENCH WITH BACK MOUNTED TO SEATWALL

1 LAYOUT AND MATERIAL PLAN
SCALE: 1" = 10'-0"



UDC FINAL APPROVAL SUBMITTAL	09/26/2022	
UDC INFORMATIONAL SUBMITTAL	08/01/2022	
NO.	REVISION	DATE

CLIENT
CITY OF MADISON PARKS DIVISION
210 MARTIN LUTHER KING JR. BLVD
MADISON, WI 53703

PROJECT
MADISON SENIOR CENTER COURTYARD
330 WEST MIFFLIN STREET
MADISON, WI 53703

DRAWING
LAYOUT AND MATERIAL PLAN

SCALE 1" = 10'-0"	DATE 09/26/2022
DRAWN BY SH	CHECKED AM
APPROVED	DEPT. APPROVAL

SEAL

NOT FOR CONSTRUCTION

DEPT. PROJECT NO.	DRAWING NO.
CONSULTANT'S PROJECT NO. 2022-001	L100
TENDER NO.	



1 AERIAL VIEW FROM CAPITOL CENTRE MARKET
SCALE: NTS



2 AERIAL VIEW FROM MADISON SENIOR CENTER
SCALE: NTS



3 PARK ENTRANCE FROM WEST MIFFLIN STREET
SCALE: NTS



4 PARK ENTRANCE FROM WEST DAYTON STREET
SCALE: NTS

	UDC FINAL APPROVAL SUBMITTAL	09/26/2022
	UDC INFORMATIONAL SUBMITTAL	08/01/2022
NO.	REVISION	DATE

CLIENT
CITY OF MADISON PARKS DIVISION
210 MARTIN LUTHER KING JR. BLVD
MADISON, WI 53703

PROJECT
MADISON SENIOR CENTER COURTYARD
330 WEST MIFFLIN STREET
MADISON, WI 53703

DRAWING
LANDSCAPE RENDERINGS

SCALE NTS	DATE 09/26/2022
DRAWN BY SH	CHECKED AM
APPROVED	DEPT. APPROVAL

SEAL

NOT FOR CONSTRUCTION

DEPT. PROJECT NO. CONSULTANT'S PROJECT NO. 2022-001 TENDER NO.	DRAWING NO. L300
---	----------------------------



1 CAPITOL CENTRE APARTMENTS PATIO
SCALE: NTS



2 MADISON SENIOR CENTER PATIO
SCALE: NTS

	UDC FINAL APPROVAL SUBMITTAL	09/26/2022
	UDC INFORMATIONAL SUBMITTAL	08/01/2022
NO.	REVISION	DATE

CLIENT
CITY OF MADISON PARKS DIVISION
210 MARTIN LUTHER KING JR. BLVD
MADISON, WI 53703

PROJECT
MADISON SENIOR CENTER COURTYARD
330 WEST MIFFLIN STREET
MADISON, WI 53703

DRAWING
LANDSCAPE RENDERINGS

SCALE NTS	DATE 09/26/2022
DRAWN BY SH	CHECKED AM
APPROVED	DEPT. APPROVAL

SEAL

**NOT FOR
CONSTRUCTION**

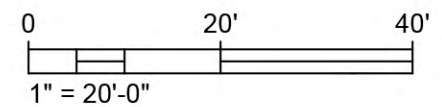
DEPT. PROJECT NO.	DRAWING NO.
CONSULTANT'S PROJECT NO. 2022-001	L301
TENDER NO.	

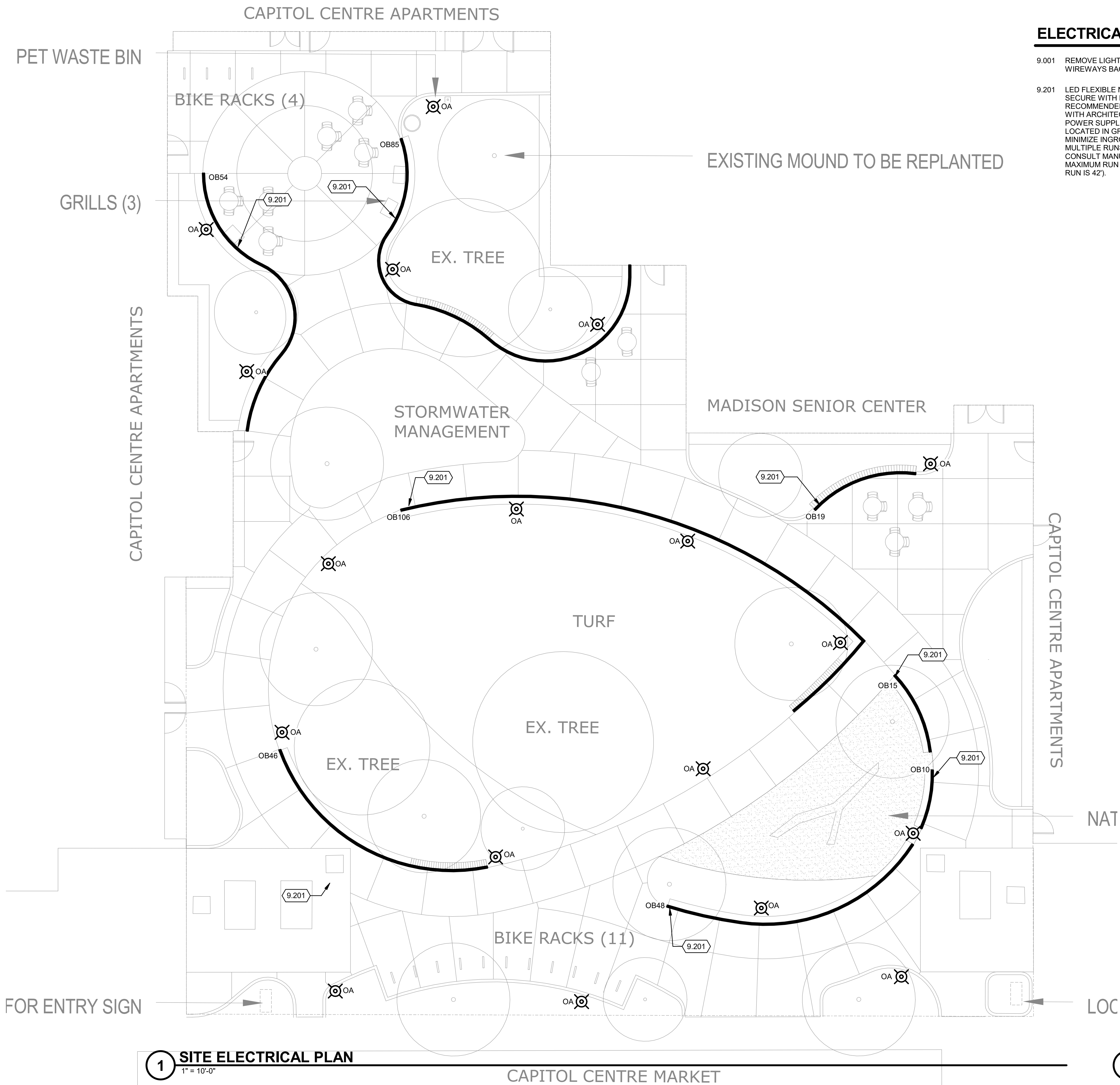


1

MADISON SENIOR CENTER COURTYARD - CONCEPT PLAN

SCALE: 1" = 20'-0"



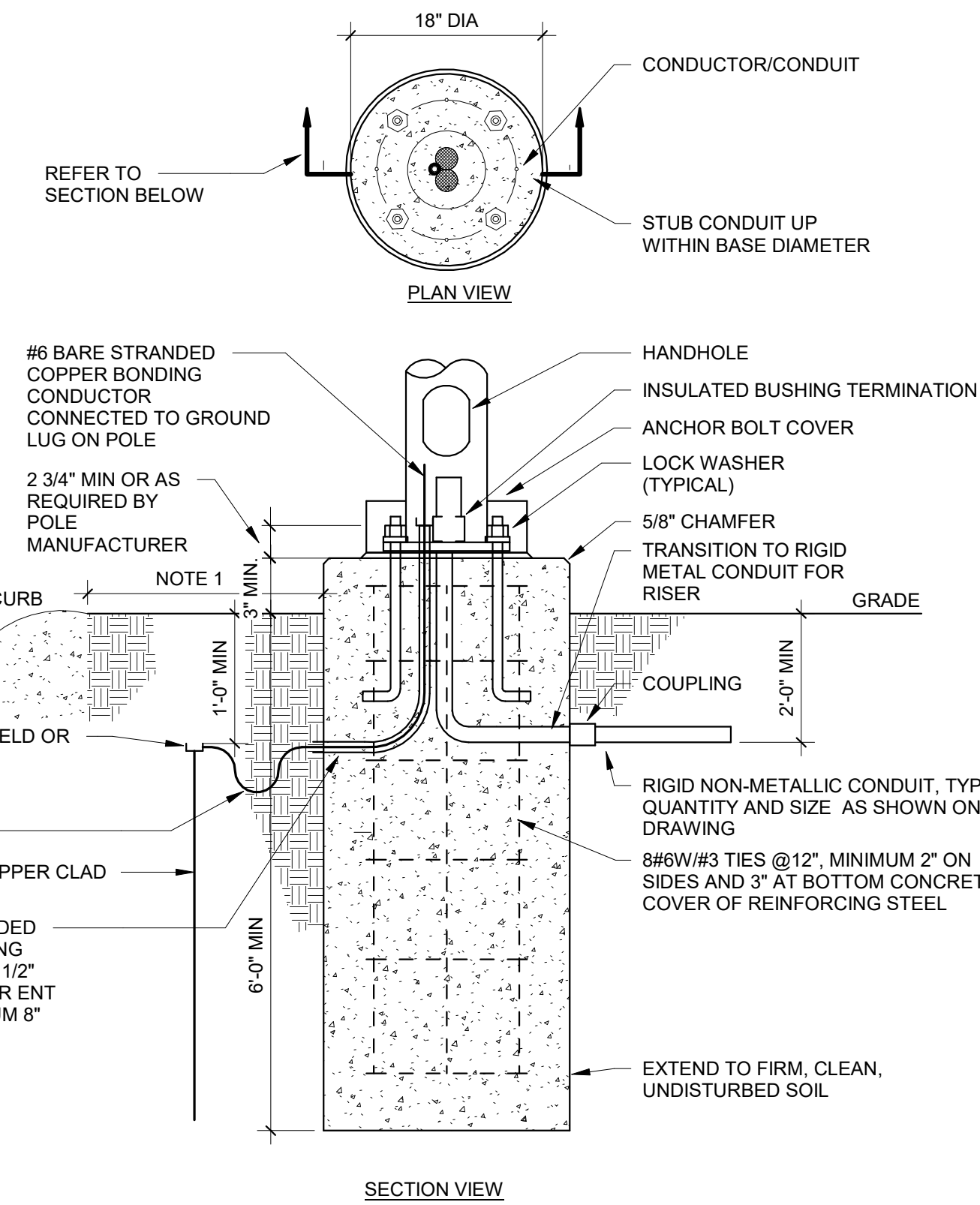


ELECTRICAL KEYED NOTES

- 9.001 REMOVE LIGHT FIXTURE, POLE, CONCRETE BASE, AND ALL WIRING AND WIREWAYS BACK TO SOURCE. TYPICAL OF ALL.
- 9.201 LED FLEXIBLE NEON SHALL BE INSTALLED IN CHANNEL UNDER BENCH. SECURE WITH MANUFACTURER MOUNTING CLIP EVERY 18" OR AS RECOMMENDED BY MANUFACTURER. COORDINATE CHANNEL MOUNTING WITH ARCHITECTURAL DETAILS ON UNDERSIDE OF BENCH. IP67 RATED POWER SUPPLIES SHALL BE LOCATED WITHIN INGROUND QUAZITE BOXES LOCATED IN GRASS AREAS. POWER SUPPLIES MAY BE GROUPED TO MINIMIZE INGROUND BOX QUANTITIES. MOST FIXTURES WILL CONTAIN MULTIPLE RUNS OF FLEXIBLE NEON TO ACHIEVE NOTED RUN LENGTHS. CONSULT MANUFACTURER OF APPROVED PRODUCT TO COORDINATE MAXIMUM RUN LENGTHS OF A SINGLE FIXTURE (ACOLYTE FIXTURE MAX RUN IS 42').

SITE SYMBOLS

- ELECTRIC HANDHOLE
- HANDHOLE, GENERIC
- ELECTRIC MANHOLE
- ELECTRIC PEDESTAL BOX
- POST TOP LIGHT POLE
- POWER POLE WITH LIGHT



- NOTES**
1. MOUNT 3'-0" FROM CURB OR CENTER IN ISLAND (IF APPLICABLE OR 1'-0" FROM SIDEWALK EDGE).
 2. CONTRACTOR SHALL USE TEMPLATE FURNISHED WITH POLE TO SET ANCHOR BOLTS. CENTER ON CONCRETE BASE.
 3. ANCHOR BOLTS SHALL BE ORIENTED PARALLEL TO THE CURB LINE.
 4. NON-SHRINK GROUT BETWEEN POLE AND BASE. PROVIDE A CHANNEL THROUGH GROUT FOR POLE INTERIOR DRAINAGE.
 5. EXPOSED SURFACES TROWELLED SMOOTH.
 6. ANCHOR BOLTS FOR POLE AS REQUIRED BY MANUFACTURER.
 7. CONCRETE BASE PER SPECIFICATIONS.

1 SITE ELECTRICAL PLAN

1" = 10'-0"

3 POLE BASE DETAIL W/ GND

1/8" = 1'-0"



Mead & Hunt
 Mead & Hunt, Inc.
 2440 Deming Way
 Middleton, WI 53562
 phone: 608-273-6380
 meadhunt.com

© Copyright 2022 Mead & Hunt, Inc. This document, or any portion thereof, shall not be duplicated, disclosed, or used on any other project or extension of this project except by written agreement with Mead & Hunt, Inc. Mead & Hunt shall not be responsible for any unauthorized use of, or alteration to these documents.

UDC FINAL APPROVAL SUBMITTAL	09/26/2022
UDC INFORMATIONAL SUBMITTAL	09/01/2022
NO. REVISION	DATE

CLIENT
 CITY OF MADISON PARKS DIVISION
 210 MARTIN LUTHER KING JR. BLVD
 MADISON, WI 53703
 PROJECT
 MADISON SENIOR CENTER COURTYARD
 330 WEST MIFFLIN STREET
 MADISON, WI 53703
 DRAWING
 CONCEPTUAL ELECTRICAL PLAN

SCALE	DATE	
As indicated	09/26/2022	
DRAWN	CHECKED	REVIEWED
KMR	M&H	KMR
APPROVED	DEPT. APPROVAL	

SEAL

NOT FOR CONSTRUCTION

DEPT. PROJECT NO.
 CONSULTANT'S PROJECT NO.
 2022-001
 TENDER NO.

DRAWING NO.
E100

LUMINAIRE SCHEDULE

DES	MANUFACTURER	CATALOG NUMBER	DESCRIPTION	LED DATA	VOLTAGE	MOUNTING	DRIVER TYPE	FIXTURE DEPTH	INPUT LOAD	LUMENS	ACCEPTACLE MANUFACTURERS	KEYED NOTES
OA	SELUX	MST-DG-1-MP350-30-10'-BK-UNV-HL50	LOW GLARE, DARK SKY LED POST TOP ON 10' POST WITH HI/LOW 50% DIM	LED, 3000K	277 V	POST TOP	F	26"	33 VA	2965	LITHONIA RADEAN	
OB10	ACOLYTE	NLC-3.030-E-NLCMOUNTCLIPV2	10' LONG LED SIDE BENDING SILICONE ENCASED FLEXIBLE LINEAR LED	LED, 3000K	277 V	SPECIAL	D	7/8"	96 VA	63LM/FT	LEDLINEAR	1
OB15	ACOLYTE	NLC-3.030-E-NLCMOUNTCLIPV2	15' LONG LED SIDE BENDING SILICONE ENCASED FLEXIBLE LINEAR LED	LED, 3000K	277 V	SPECIAL	D	7/8"	96 VA	63LM/FT	LEDLINEAR	1
OB19	ACOLYTE	NLC-3.030-E-NLCMOUNTCLIPV2	19' LONG LED SIDE BENDING SILICONE ENCASED FLEXIBLE LINEAR LED	LED, 3000K	277 V	SPECIAL	D	7/8"	96 VA	63LM/FT	LEDLINEAR	1
OB46	ACOLYTE	NLC-3.030-E-NLCMOUNTCLIPV2	46' LONG LED SIDE BENDING SILICONE ENCASED FLEXIBLE LINEAR LED	LED, 3000K	277 V	SPECIAL	D	7/8"	192 VA	63LM/FT	LEDLINEAR	1
OB48	ACOLYTE	NLC-3.030-E-NLCMOUNTCLIPV2	48' LONG LED SIDE BENDING SILICONE ENCASED FLEXIBLE LINEAR LED	LED, 3000K	277 V	SPECIAL	D	7/8"	192 VA	63LM/FT	LEDLINEAR	1
OB54	ACOLYTE	NLC-3.030-E-NLCMOUNTCLIPV2	54' LONG LED SIDE BENDING SILICONE ENCASED FLEXIBLE LINEAR LED	LED, 3000K	277 V	SPECIAL	D	7/8"	192 VA	63LM/FT	LEDLINEAR	1
OB85	ACOLYTE	NLC-3.030-E-NLCMOUNTCLIPV2	85' LONG LED SIDE BENDING SILICONE ENCASED FLEXIBLE LINEAR LED	LED, 3000K	277 V	SPECIAL	D	7/8"	384 VA	63LM/FT	LEDLINEAR	1
OB106	ACOLYTE	NLC-3.030-E-NLCMOUNTCLIPV2	106' LONG LED SIDE BENDING SILICONE ENCASED FLEXIBLE LINEAR LED	LED, 3500K	277 V	SPECIAL	D	7/8"	384 VA	63LM/FT	LEDLINEAR	1

BALLAST/DRIVER: (SEE SPECIFICATIONS)

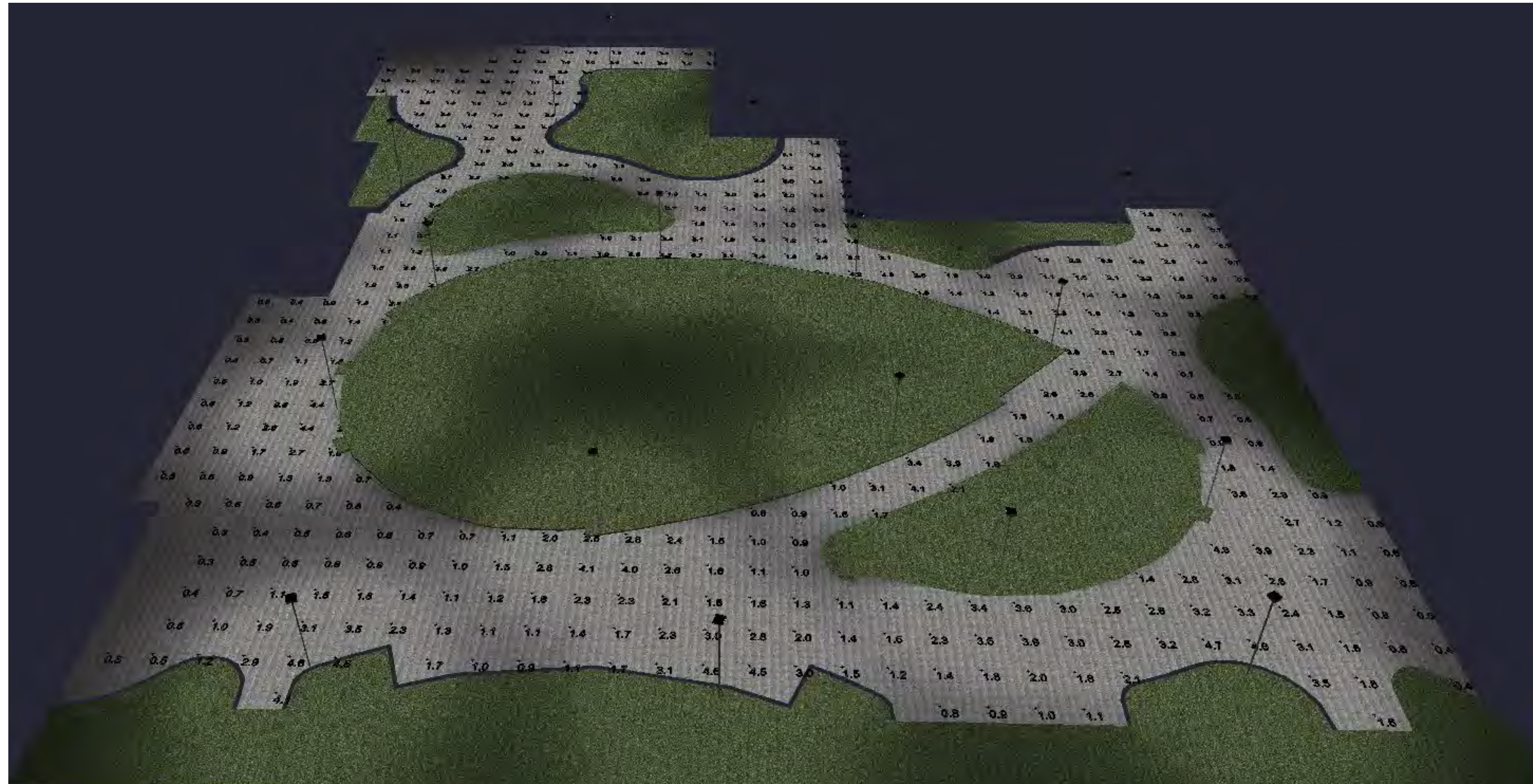
- A LED DIMMABLE DRIVER (0-10V) - 10% DIM
- B LED DIMMABLE DRIVER (0-10V) - 1% DIM
- C LED DIMMABLE DRIVER (ELV)
- D LED NON-DIMMABLE DRIVER
- E EMERGENCY (BATTERY) (DRIVER)
- F LED STEP-DIMMING DRIVER

LUMINAIRE SCHEDULE GENERAL NOTES:

- REFER TO DIVISION 28 SPECIFICATION FOR ADDITIONAL INFORMATION BEFORE ORDERING.
- ALL LED LUMINAIRES MUST COMPLY WITH LM-79 AND LM-80 TESTING STANDARDS. L70 LIFE SHALL HAVE A MINIMUM OF 50,000 HOURS.
- ANY PROPOSED SUBSTITUTIONS MUST BE SUBMITTED WITH PHOTOMETRIC CALCULATIONS AND CATALOG SHEETS WITH DATA TO PROVE EQUAL CHARACTERISTICS. PROVIDE PHYSICAL SAMPLES OF PROPOSED SUBSTITUTIONS UPON REQUEST.
- EC SHALL VERIFY AND COORDINATE ALL LUMINAIRE TRIMS/FLANGES WITH RESPECTIVE CEILING TYPES SCHEDULED AND/OR SUBMITTED BY THE GC PRIOR TO ORDERING OF THE LUMINAIRES. SCHEDULE INDICATES TRIM TYPES BASED ON THE GENERIC CEILING INFORMATION AVAILABLE AT THE TIME BIDDING DOCUMENTS WERE ISSUED AND DOES NOT REFLECT ACTUAL THICKNESS OF GYPSUM WALL BOARD OR PLASTER CEILING OR EXACT GRID TYPE SPECIFIED BY THE ARCHITECT.

LUMINAIRE SCHEDULE KEYED NOTES:

- LED FLEXIBLE NEON FIXTURE. FIXTURE MAY CONTAIN MULTIPLE RUNS TO FULFILL LENGTH REQUIRED. COORDINATE EXACT LENGTH REQUIRED WITH BENCH DETAILS. POWER SUPPLIES ARE REMOTE AND SHALL BE IP67 RATED. PROVIDE WITH MOUNTING CLIPS AND SUPPORT FIXTURE AS RECOMMENDED BY MANUFACTURER.
- WET LOCATION LISTED.
- PROVIDE WITH 10' TALL ROUND STRAIGHT ALUMINUM POLE AND OPTIONAL BASE COVER. FINISH SHALL MATCH FINAL FIXTURE FINISH SELECTION. SOME POLES MAY BE PROVIDED WITH GFCI RECEPTACLE AND WEATHER PROOF COVER. SEE PLANS FOR COORDINATION.



1 PARK LIGHTING PHOTOMETRIC RENDERING

LIGHTING CONTROL INTENT:

PROVIDE SMALL CENTRALIZED LOW VOLTAGE RELAY PANEL, nLIGHT ARP 8-RELAY OR SIMILAR WITH TIMECLOCK FUNCTION. PANEL LOCATION TBD BUT IF LOCATED OUTSIDE, PANEL SHALL BE MOUNTED IN NEMA 4 RATED ENCLOSURE.

SOFTWARE MUST BE PROVIDED WITH LIGHTING CONTROL SYSTEM FOR MAINTENANCE AND SCHEDULING PURPOSES. OWNER TRAINING UPON COMPLETION OF LIGHTING CONTROL COMMISSIONING SHALL BE PROVIDED.

SWITCH LABELING INTENT:
 • (R#) INDICATES CENTRALIZED LOW VOLTAGE RELAY CONTROL WHERE THE NUMBER IS THE CORRESPONDING RELAY

CONTROL INTENT BY SPACE:

- EXTERIOR LIGHTING:
- PROVIDE LOW VOLTAGE LIGHTING CONTROL WITH STEP DIM POWER SUPPLY FOR DIMMING TO 50% OF ALL POLE MOUNTED AREA LIGHTING. LIGHTING SHALL TURN ON AT DUSK AND DIM TO 50% AT 10PM. LIGHTING WILL TURN OFF AT DAWN.
 - PROVIDE LOW VOLTAGE LIGHTING CONTROL FOR ON/OFF RELAY CONTROL OF ALL UNDER BENCH LIGHTING. LIGHTING SHALL TURN ON AT DUSK AND OFF AT 10PM (PARK CLOSING).



Mead & Hunt
 Mead & Hunt, Inc.
 2440 Deming Way
 Middleton, WI 53562
 phone: 608-273-6380
 meadhunt.com

© Copyright 2022 Mead & Hunt, Inc. This document, or any portion thereof, shall not be duplicated, disclosed, or used on any other project or extension of this project except by written agreement with Mead & Hunt, Inc. Mead & Hunt shall not be responsible for any unauthorized use of, or alteration to these documents.

UDC FINAL APPROVAL SUBMITTAL	09/26/2022	
UDC INFORMATIONAL SUBMITTAL	09/01/2022	
NO.	REVISION	DATE

CLIENT
 CITY OF MADISON PARKS DIVISION

210 MARTIN LUTHER KING JR. BLVD
 MADISON, WI 53703

PROJECT
 MADISON SENIOR CENTER COURTYARD

330 WEST MIFFLIN STREET
 MADISON, WI 53703

DRAWING
 CONCEPTUAL ELECTRICAL DETAILS

SCALE	DATE
As indicated	09/26/2022

DRAWN	CHECKED	REVIEWED
KMR	M&H	KMR

APPROVED	DEPT. APPROVAL

SEAL	SEAL

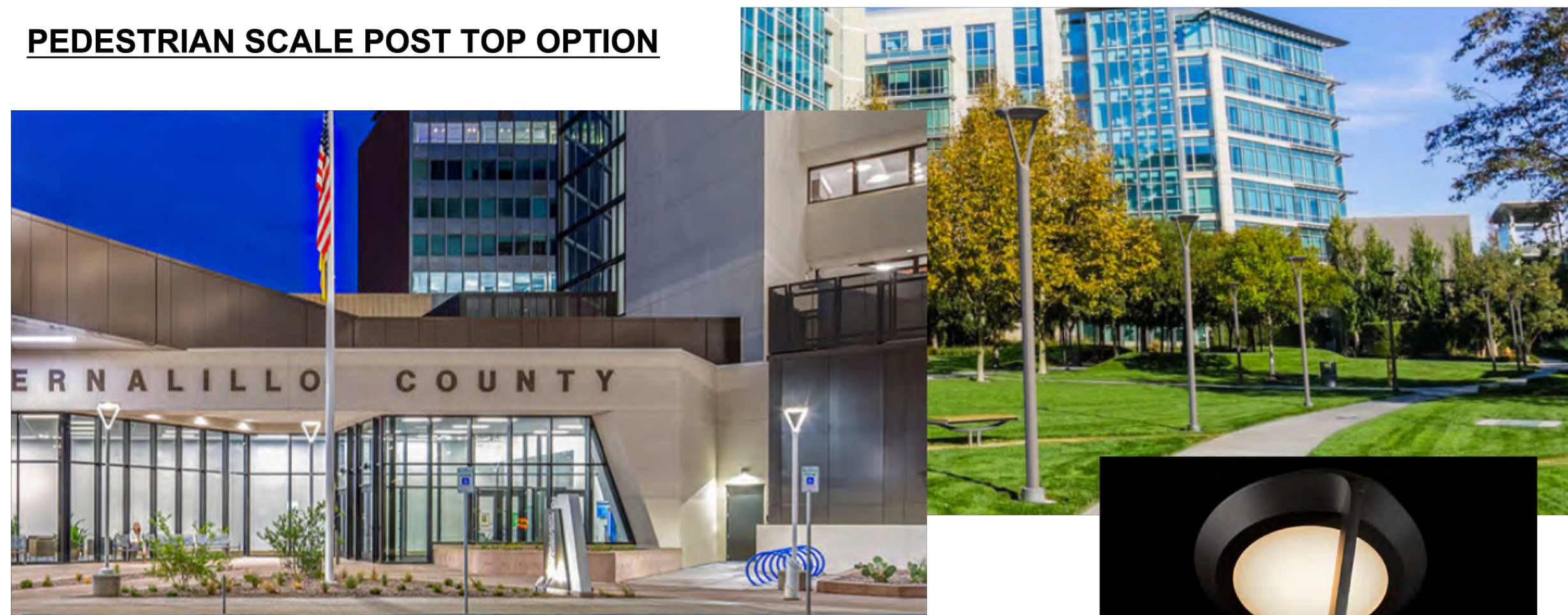
NOT FOR
CONSTRUCTION

DEPT. PROJECT NO.	DRAWING NO.

CONSULTANT'S PROJECT NO.
 2022-001
 TENDER NO.

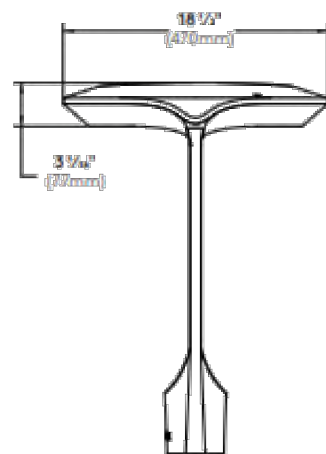
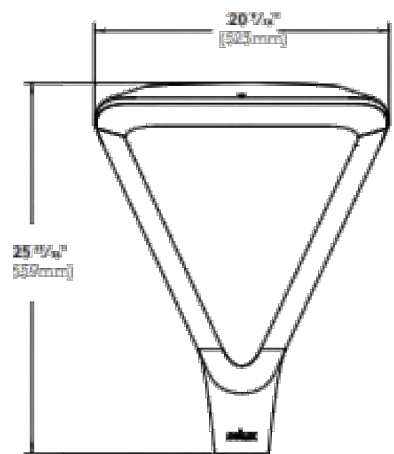
E200

PEDESTRIAN SCALE POST TOP OPTION



Gen5/DG Optic

Mistella™ LED

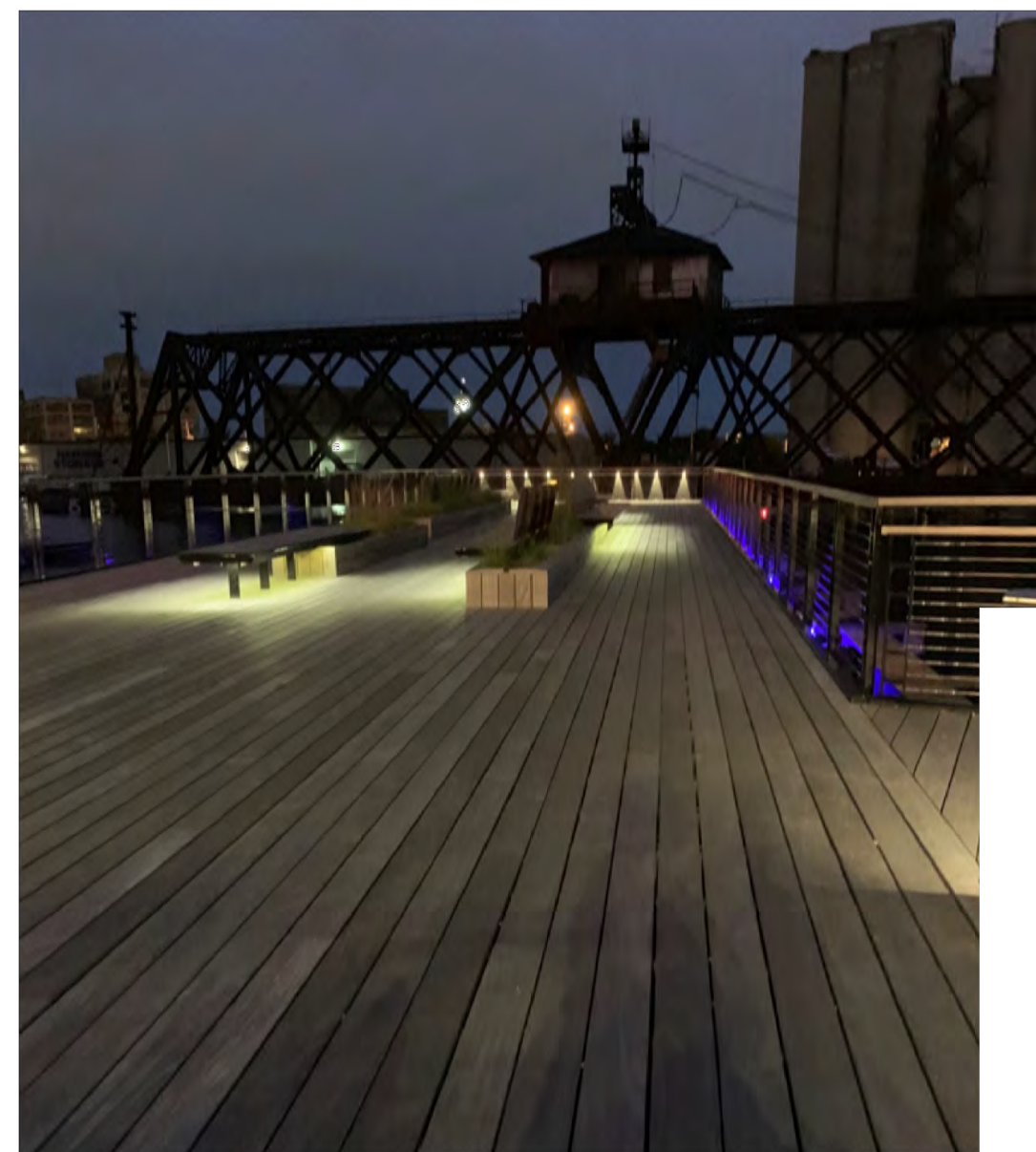


selux

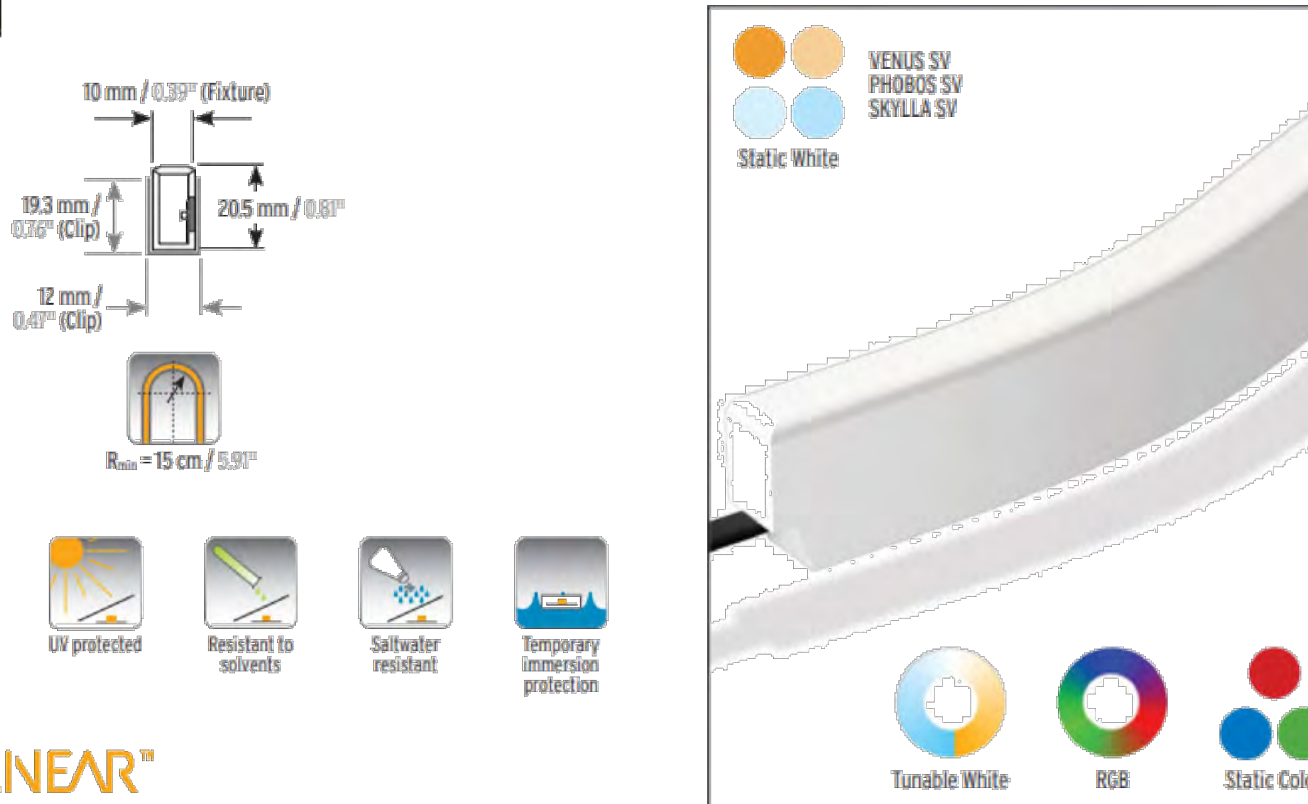


BUG Rating B1-U0-G1

UNDER BENCH LIGHTING OPTION



Venus SV Stainless Steel Mounting Bracket
Stainless steel surface mounting bracket. Recommended to use every 18 inches to hold the fixture, but will not prevent sagging in between.
1-1/4" x 5/8" x 1"



VENUS SV IP67 Static White/Tunable White/Static Color/RGB

LED LINEAR®
lighting solutions

1 PEDESTRIAN SCALE POST TOP CUT SHEET
SCALE: NTS

2 UNDER BENCH LIGHTING CUT SHEET
SCALE: 1 1/2" = 1'-0"



CLIENT	CITY OF MADISON PARKS DIVISION	
	210 MARTIN LUTHER KING JR. BLVD MADISON, WI 53703	
PROJECT	MADISON SENIOR CENTER COURTYARD	
	330 WEST MIFFLIN STREET MADISON, WI 53703	
DRAWING	ELECTRICAL CUT SHEETS	
SCALE	DATE	
NTS	09/26/2022	
DRAWN BY	CHECKED	REVIEWED
SH	AM	
APPROVED	DEPT. APPROVAL	
SEAL	SEAL	
NOT FOR CONSTRUCTION		
DEPT. PROJECT NO.	DRAWING NO.	
CONSULTANT'S PROJECT NO.	2022-001	
TENDER NO.	E300	

	UDC FINAL APPROVAL SUBMITTAL	09/26/2022
	UDC INFORMATIONAL SUBMITTAL	08/01/2022
NO.	REVISION	DATE