

# DOOR CREEK PARK SHELTER

PUBLIC INPUT SESSION #1 | 4.27.21

# AGENDA

1. Review Parks and Open Spaces Plan "Guiding Lenses"
2. Goals & Priorities
  - a) Sustainability Target
3. Review Site Analysis
4. Aesthetic Direction Discussion
  - a) Image preferences
  - b) Design Spectrum Exercise
5. Program Review
6. Open Discussion



DOOR CREEK PARK

851 HARRINGTON DR.  
CITY OF MADISON



# MADISON PARKS – PARKS AND OPEN SPACE PLAN GUIDING LENSES



**EQUITY** – The inherent worth of each individual in Madison should be esteemed and fostered, enabling them to reach full potential



**PUBLIC HEALTH** – The access and contribution to mental and physical health of a community



**SUSTAINABILITY** – Management of resources to promote welfare and equity for current and future generations



**ADAPTABILITY** – Preparedness and ability to respond to and recover from hazards and threats with minimal damage to safety, health, security, and the economy

# ESTABLISH PRIORITIES + GOALS

## GOALS / PRIORITIES

1. Equity/Inclusivity/Accessibility
2. Educate
3. Facilitate Cultural, Educational, Celebratory Gatherings
4. Quality Design
5. Durability
6. Ease of Maintenance
7. Sustainability
8. Security

## DISCUSSION

1. What meaning does a park shelter have for the Community?
2. What first impression should the park shelter leave users with?
3. How should the shelter make people feel?
4. How should the shelter symbolize the park? Neighborhood? City of Madison?
5. How can the park shelter equitably serve the neighborhood and users?
6. What will having the shelter do for the surrounding community

# LEED GOAL

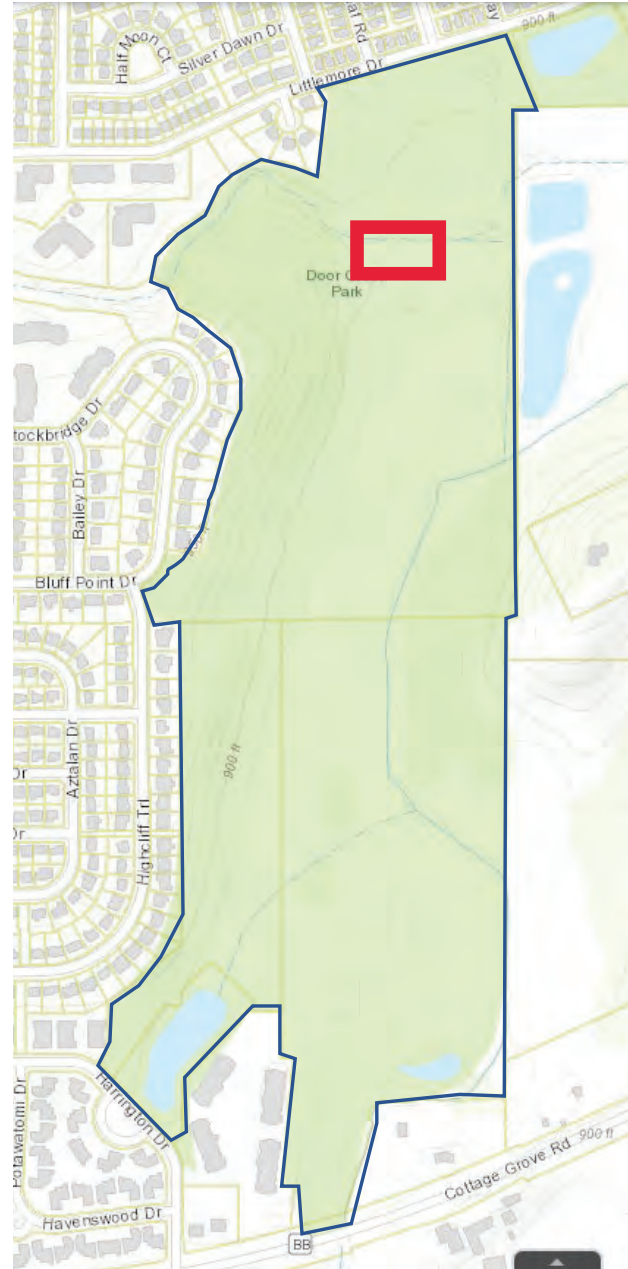
## GOALS

- Introduce team of stakeholders, and team members, review roles and responsibilities.
- Establish LEED goals, familiarize LEED Credit categories, choose specific strategies and establish feedback.
- Combine team expertise to optimize green strategies across all aspects of design and construction.

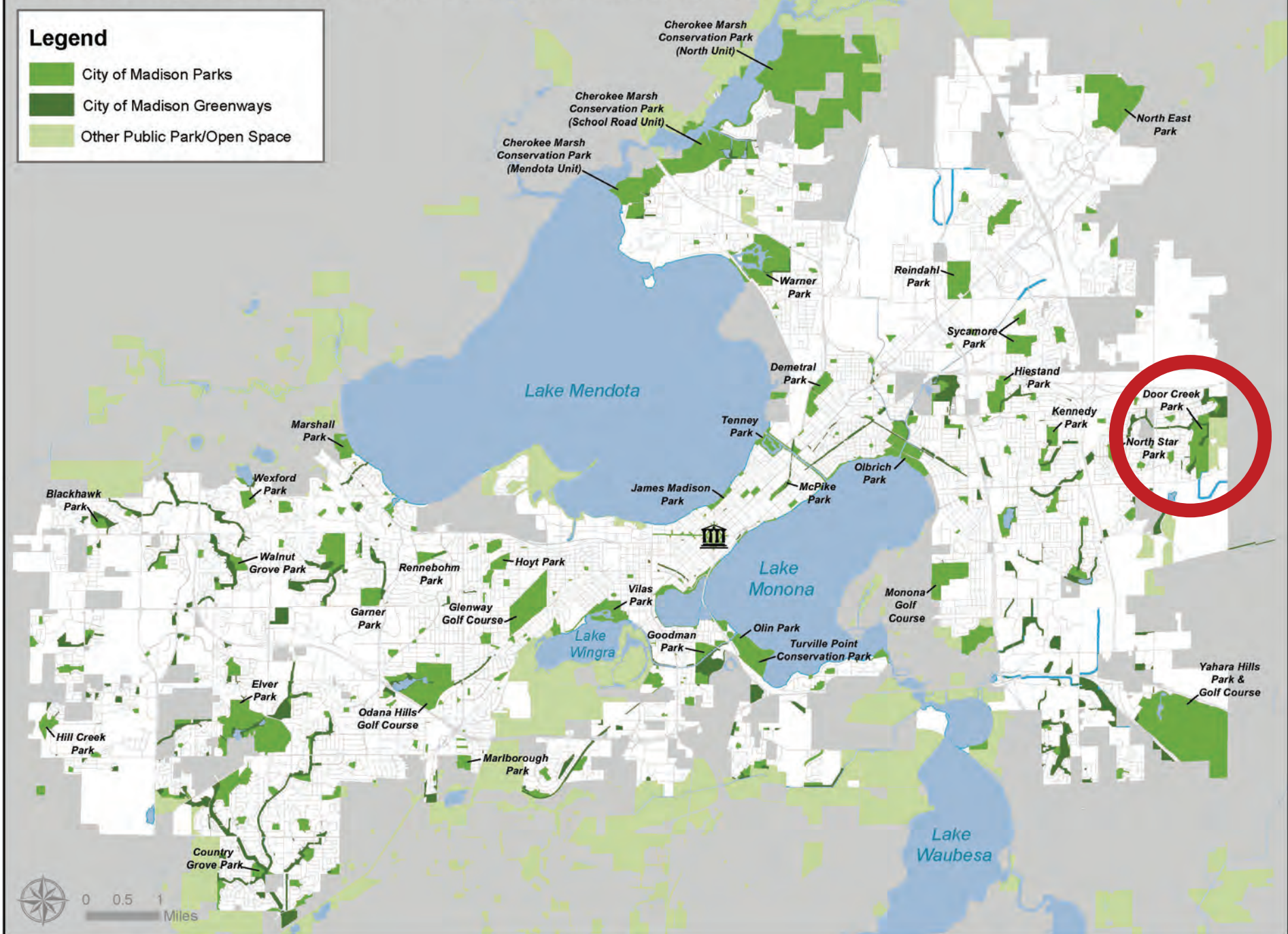




# MADISON PARKS



## Exhibit I: City of Madison Park and Open Space Inventory Map



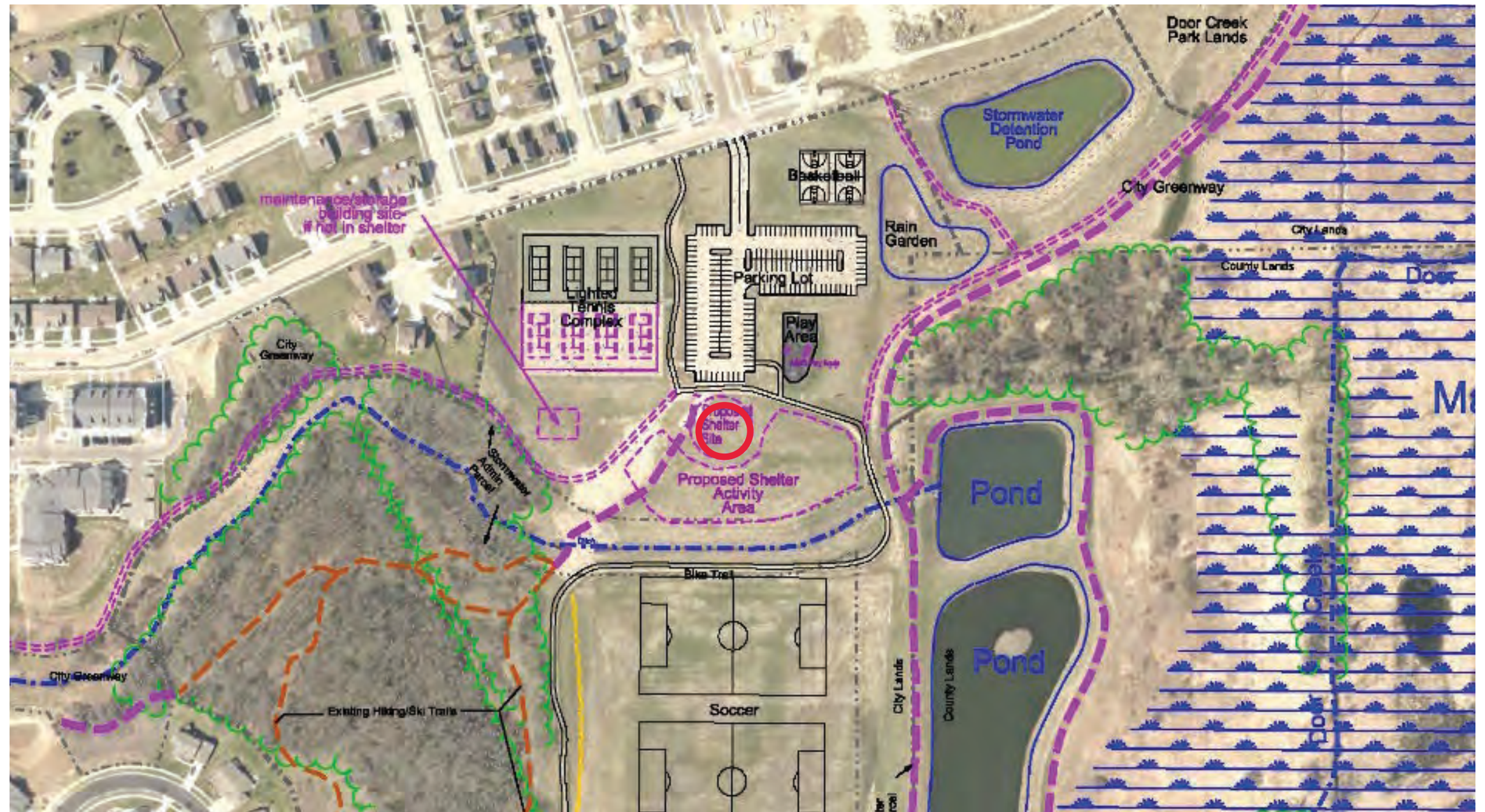
2018-2023 Park and Open Space Plan



# PARK MASTERPLAN

## LEGEND

-  General - Existing
  -  General - Planned
  -  Ski Trail - Existing
  -  Ski Trail - Planned
  -  Hiking Trail - Existing
  -  Hiking Trail - Planned
  -  Stream/Ditch - Existing
  -  Stream/Ditch - Planned
- 
-  Trees - Existing
  -  Trees - Planned
  -  Prairie/Low Mow - Existing
  -  Prairie/Low Mow - Planned
  -  Contours - Existing
  -  Contours - Planned
  -  Property Line - Existing
  -  Property Line - Planned





## SITE ANALYSIS

**Park classification:** Community park

**Area of service:**

- 2 mile for most amenities
- 3–5 miles for ski trails
- Sporadic traffic for events

**Service area population:** 2 Mile Radius

**Amenities:**

- Running, biking, walking, & ski trails
- Playground
- Courts

**Existing parking capacity:** 172 stalls

**Future parking to accommodate:**

- 120–person capacity community space
- Amenities listed above
- Master plan shows limited to no opportunity for expansion of parking

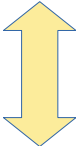
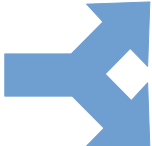

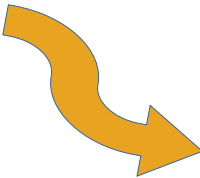


# SITE ANALYSIS | ASSETS & OPPORTUNITIES





# SITE ANALYSIS | ASSETS & OPPORTUNITIES

-  USER TRAFFIC
-  BEST VIEWS
-  DRAINAGE
-  PREVAILING





# SITE ANALYSIS | SOLAR PATTERNS



JANUARY SOLAR PATTERN



APRIL SOLAR PATTERN



JULY SOLAR PATTERN



OCTOBER SOLAR PATTERN

# IMAGE PREFERENCES + DISCUSSION

## DESIGN CATEGORIES

- *MODERN / CONTEMPORARY*
- *WOODSIE*
- *TRADITIONAL*



MODERN



DOOR CREEK PARK SHELTER



MODERN



DOOR CREEK PARK SHELTER



MODERN



DOOR CREEK PARK SHELTER

 ARO EBERLE  
ARCHITECTS



MODERN



DOOR CREEK PARK SHELTER



# WOODSIE



DOOR CREEK PARK SHELTER



# WOODSIE



DOOR CREEK PARK SHELTER



# WOODSIE



DOOR CREEK PARK SHELTER



# TRADITIONAL



DOOR CREEK PARK SHELTER



# TRADITIONAL



DOOR CREEK PARK SHELTER

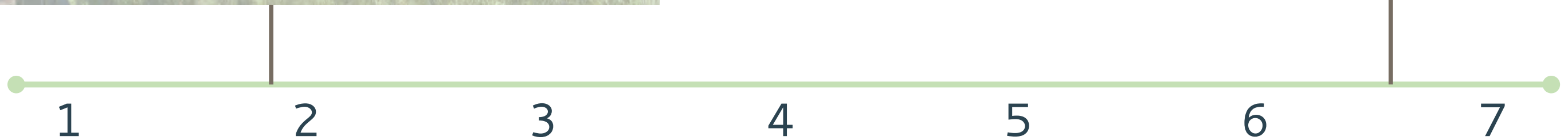


# IDENTITY

*TRADITIONAL*



*ICONIC  
OBJECT-LIKE*





MATERIALITY

*HEAVY, DARK STRONG*



*LIGHT, AIRY, TRANSPARENT*



1

2

3

4

5

6

7

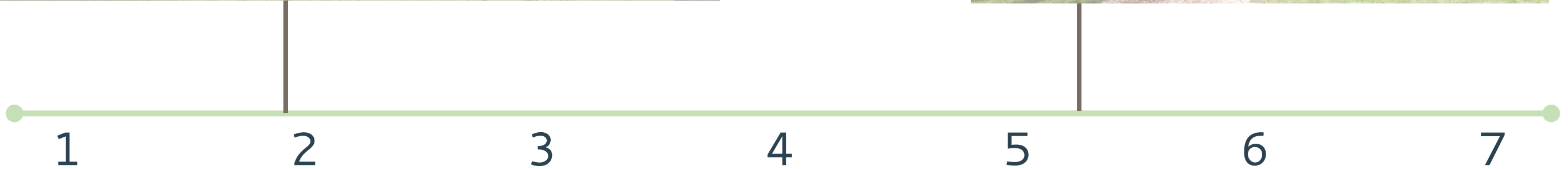


ATTITUDE

*SOFT, GENTLE*



*POINTY, SEVERE*





FUN!

*STAID, CALM*



*DYNAMIC COLORFUL  
PLAYFUL*



1

2

3

4

5

6

7



# PARK SHELTER PROGRAM | INTERIOR

Space / Function	No. of Occupants	NSF per Occupant	NSF per Space	No. of Spaces	Total NSF	Function	Features	Infrastructure needs (MEP)	Infrastructure needs (other)
<b>Indoor / Enclosed</b>									
Event / community space	120	15	1800	1	1800	Reservable Flexible, open space Use: Public, cultural, educational activities Gathering types: standing reception, seated dinner, awards ceremony, or similar	Operable windows Durable interior finishes Easy to clean finishes Fireplace? Built-in seating? Timber ceiling? Skylight/s?	Adjustable lighting Power (convenience) Speakers Wireless internet Fans Heating / AC Smart technologies?	Tables & chairs Trash / recycling Cleaning supplies Acoustic treatments
Entry area			200	1	200	Extension of event space			
Kitchen			400	1	400	Reservable warming kitchen	FRP or tile on walls Commercial kitchen floor	Refrigerator/s Microwave/s Electric stove Hand wash sink Prep sink Floor drain	Stainless work tables Base / upper cabinets
Restrooms			300	2	600	· Men's & Women's ADA restrooms · Gender neutral or family restroom?	· Accessible from event space and outdoor area · Tile flooring and walls · Solid surface, stone, or sim. vanity material · Undermount sinks	Sinks Toilets Urinals Floor drains Electric hand dryers	Trash Soap dispensers Baby changing station Paper towel disp.? Other accessories?
Mechanical Room			200	1	250	Plumbing, Elec, HVAC systems room		Houses all main systems	
Garage			400	1	400	Access from outside only? Access to Equipment storage room?		Power Plumbing?	Storage shelving
Equipment Storage Room			300	1	300	Access from both outside and from interior		Power Plumbing?	Storage shelving
Furniture Storage Room			300	1	300	Access from interior			
NSF Total					4250				

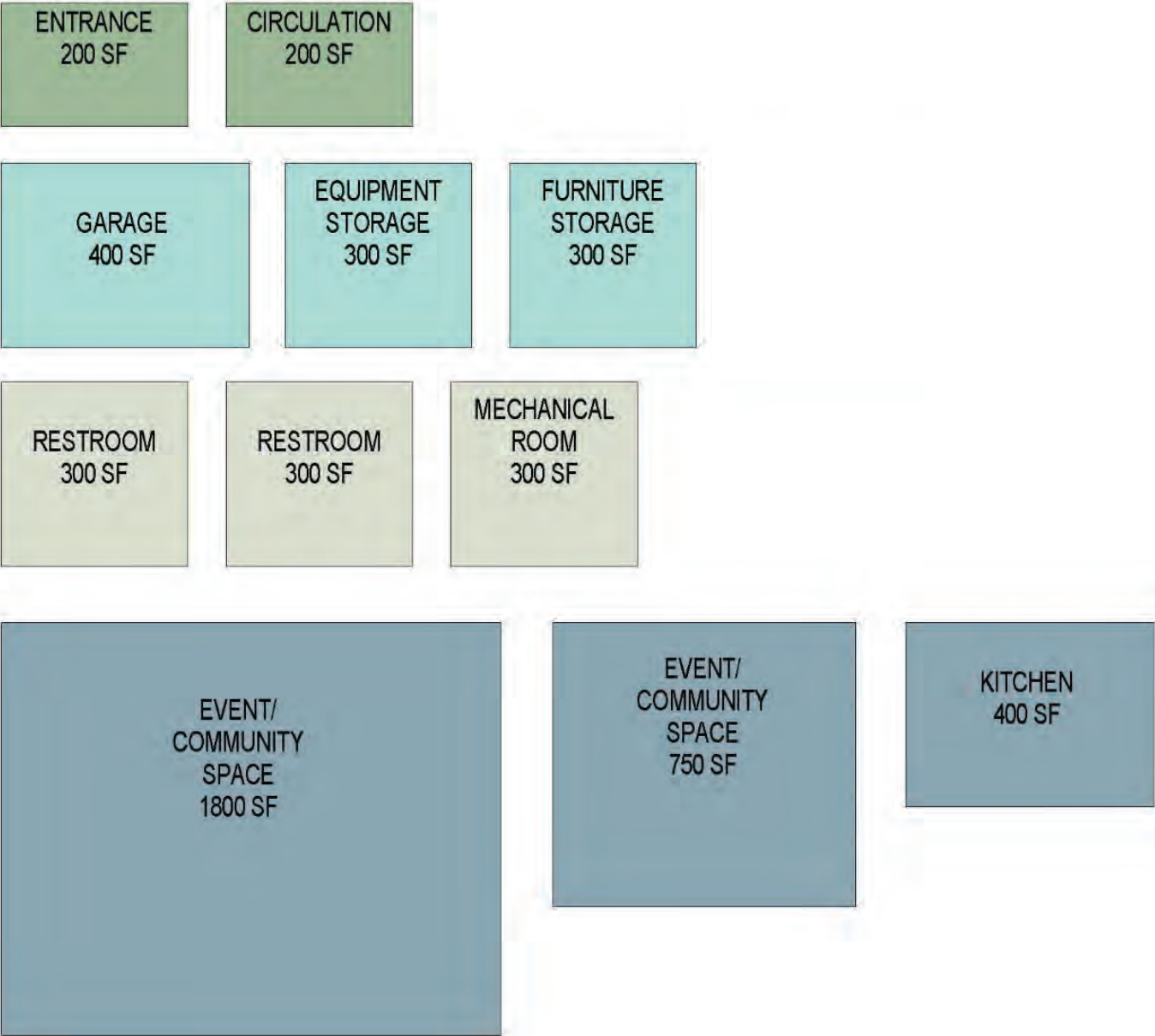


# PARK SHELTER PROGRAM | EXTERIOR

Space / Function	No. of Occupants	NSF per Occupant	NSF per Space	No. of Spaces	Total NSF	Function	Features	Infrastructure needs (MEP)	Infrastructure needs (other)
<b>Outdoor / Open</b>									
Event / community space	50	15	750	1	750	Reservable Flexible, open space	Concrete slab floors Timber ceilings? Grills Fireplace?	Power	Tables & chairs Trash / recycling
NSF Total					750				
Total NSF					5,000				
Circulation					10%				
Total S.F.					5,500				



# PARK SHELTER PROGRAM | GRAPHIC PROGRAM



 CIRCULATION

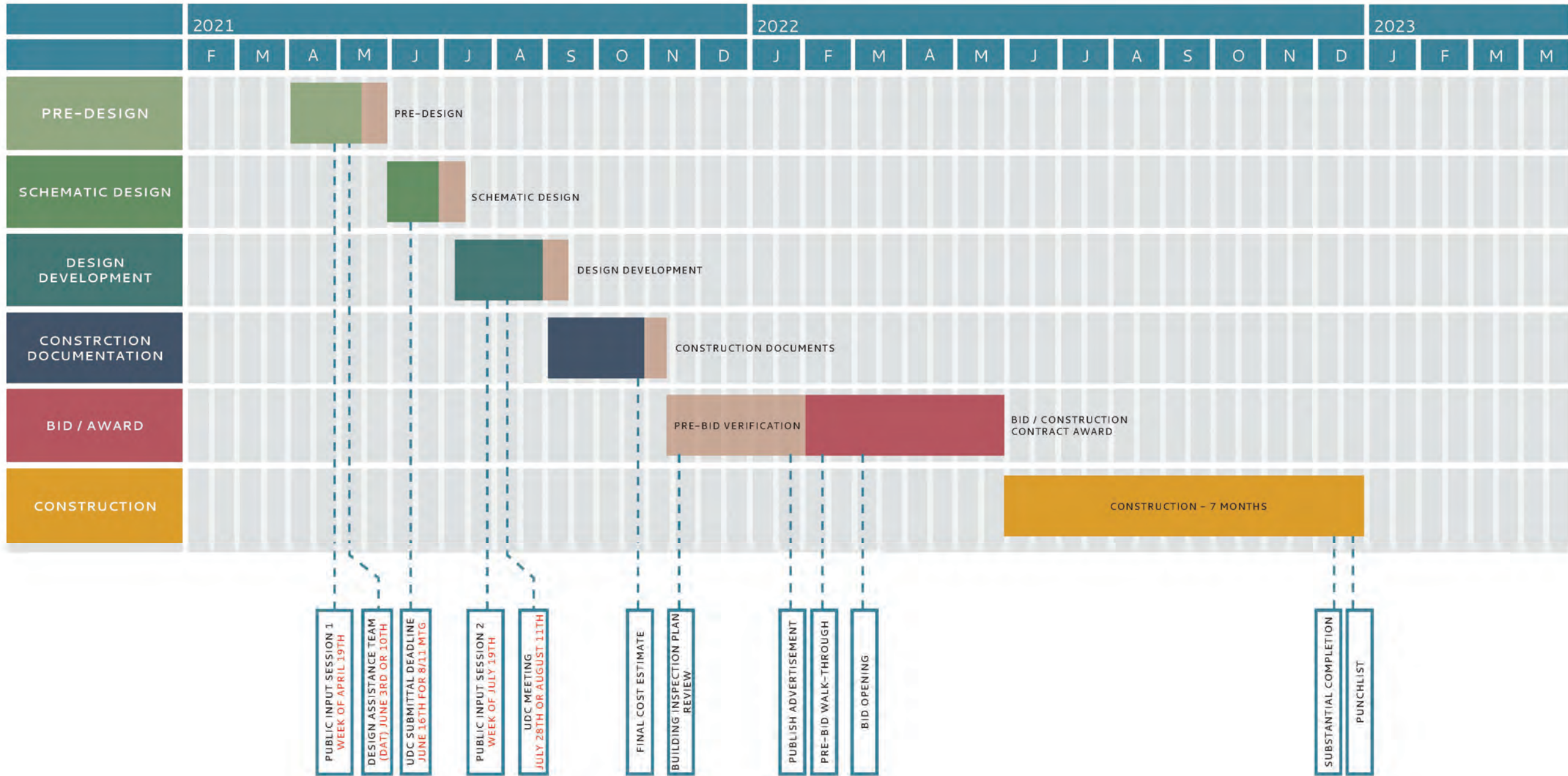
 STORAGE

 BUILDING SUPPORT

 EVENT SPACE



# DOOR CREEK PROJECT SCHEDULE





# QUESTIONS AND COMMENTS

NEXT PUBLIC INPUT SESSION PROPOSED THE WEEK OF JULY 19TH

PAHL@AROEBERLE