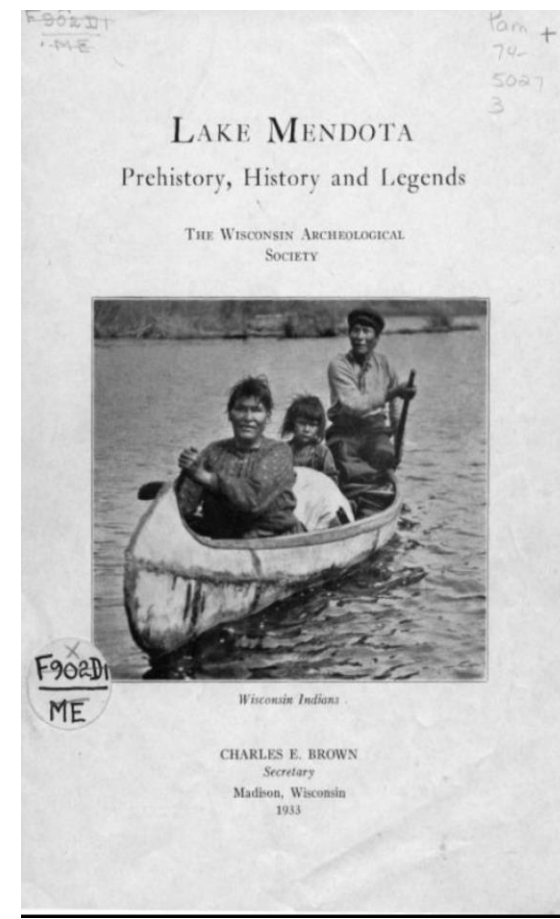


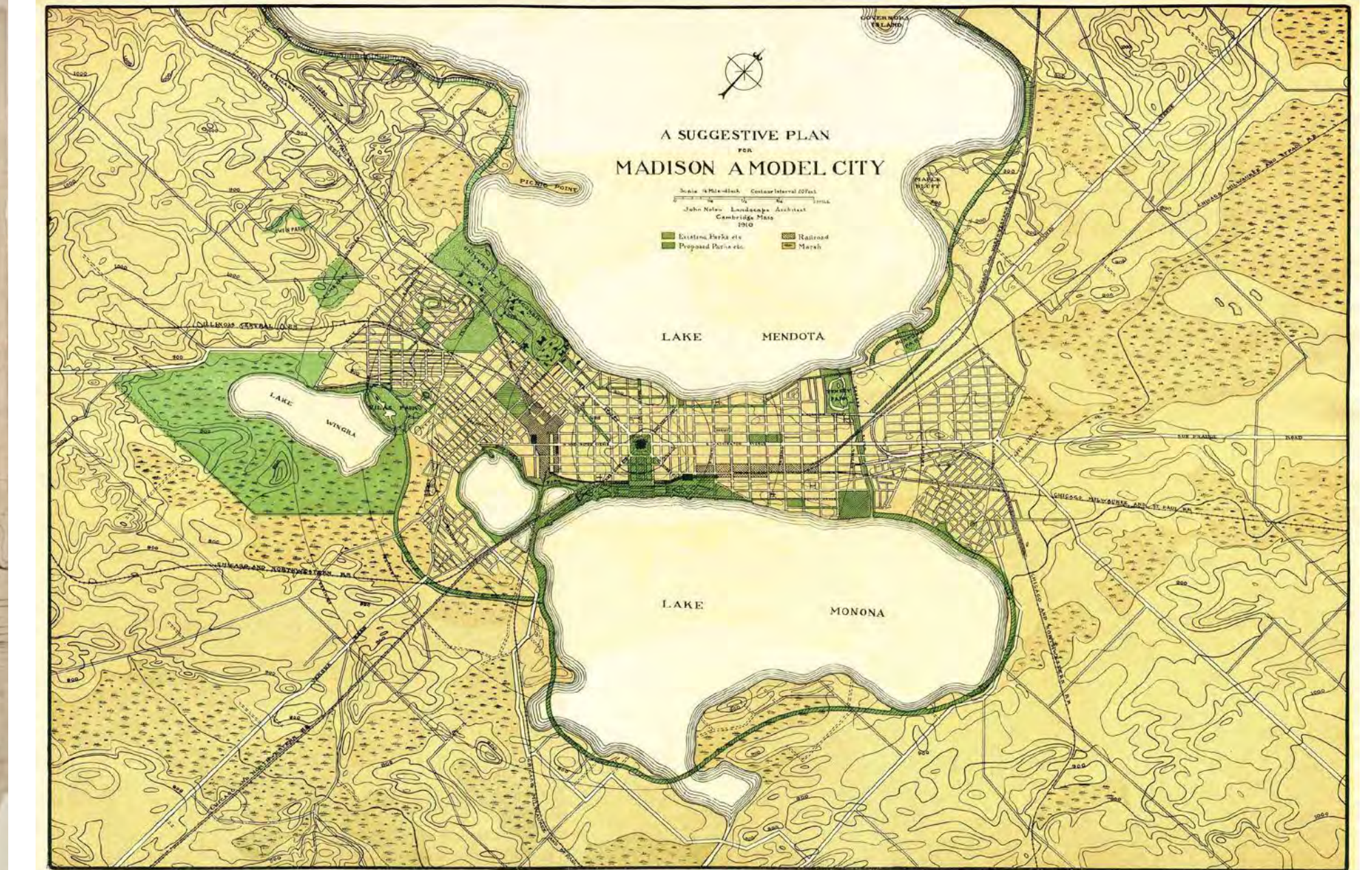
# Historical Development

## Site Investigations: Chronology and Context

### Pre-historic Indigenous Use



### Its Place in the Capitol City



### Industrial Use: Ice Harvesting & Boat Building



### Boater's Paradise in both Winter and Summer



### James Madison Park: A Waterfront Park with Historic Resources



City of Madison Landmarks Commission  
LANDMARKS AND LANDMARK SITES NOMINATION FORM (1)

1. Name of Building or Site (1) Common Name: Boater's Boat House (2) Historic (if applicable): Bernard Boat House	
11. Location (1) Street Address: 622 East Gorham Street (2) Ward (available @ City Clerk): District 4	
111. Classification (1) Type of Property (building, monument, park, etc.): Boat House (2) Zoning District: R-2 (3) Present Use: boathouse, boating lessons	

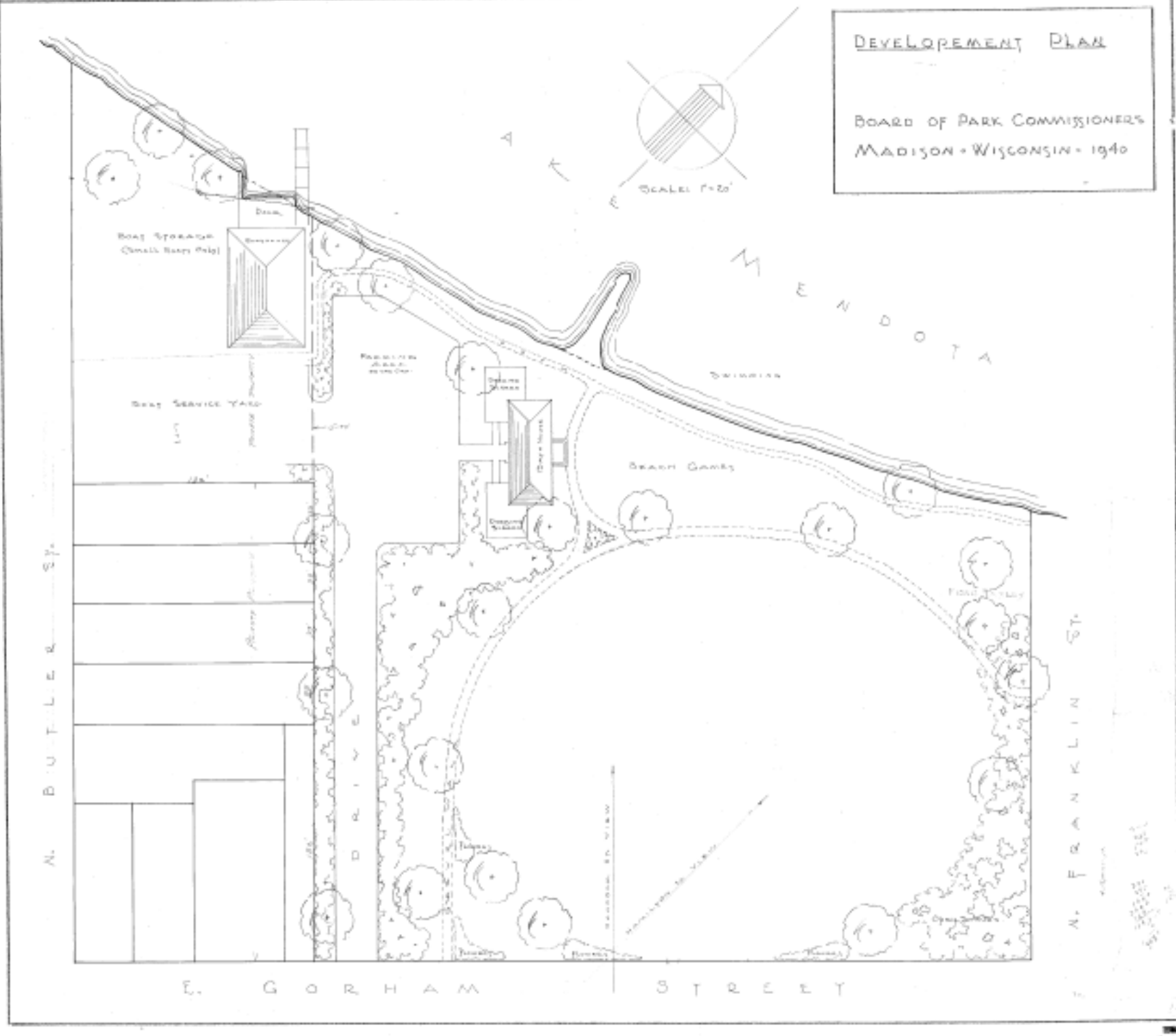
United States Department of the Interior  
Heritage Conservation and Recreation Service  
National Register of Historic Places  
Inventory-Nomination Form

1. Name: Bernard-Boater Boat House  
2. Location: 622 E. Gorham Street, Madison, WI  
3. Classification: Residential - Single-Family  
4. Owner of Property: City of Madison Parks Department, Mr. Daniel Stepp, Superintendent  
5. Location of Legal Description: 219 Monona Avenue, Madison, WI  
6. Representation in Existing Surveys: Yes

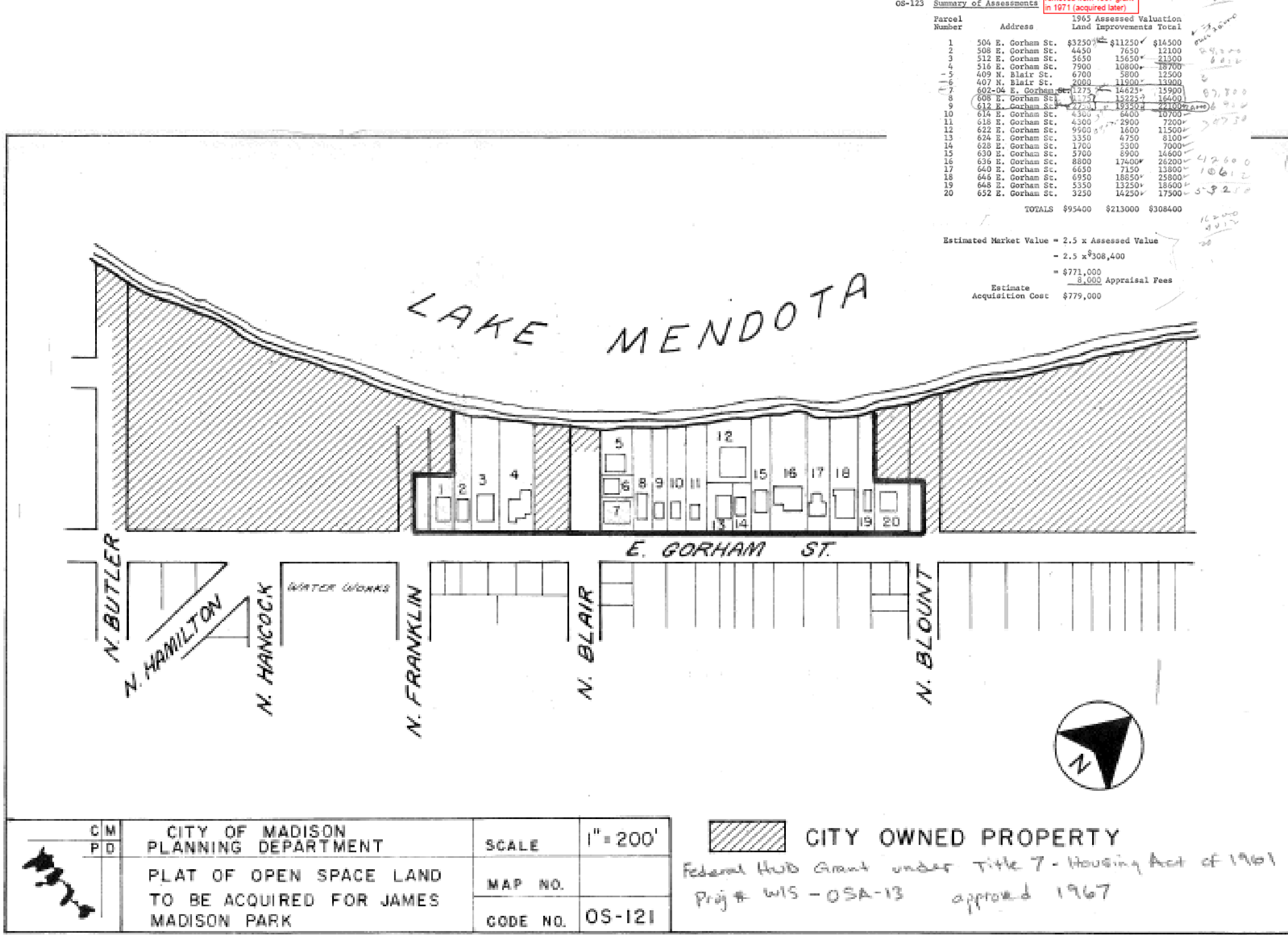


# Historical Development

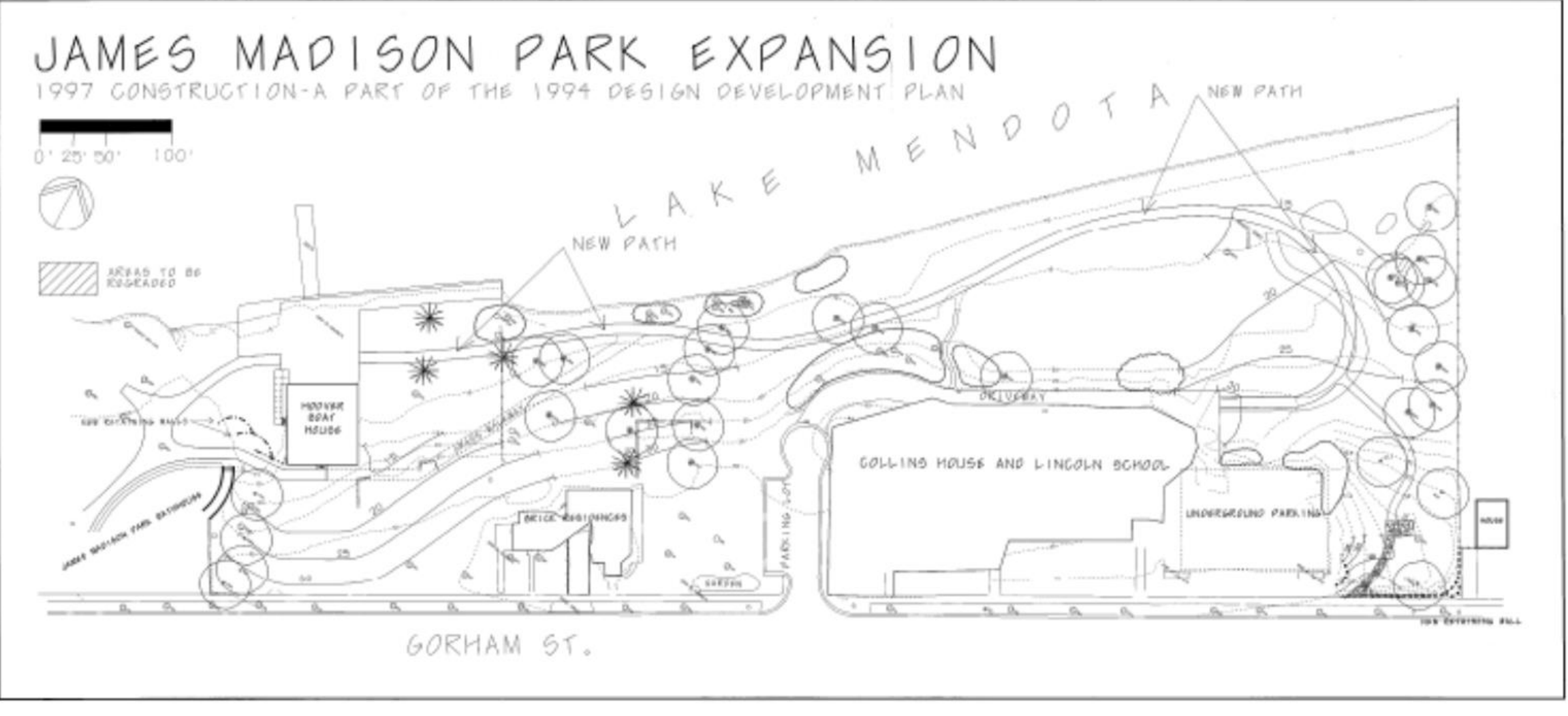
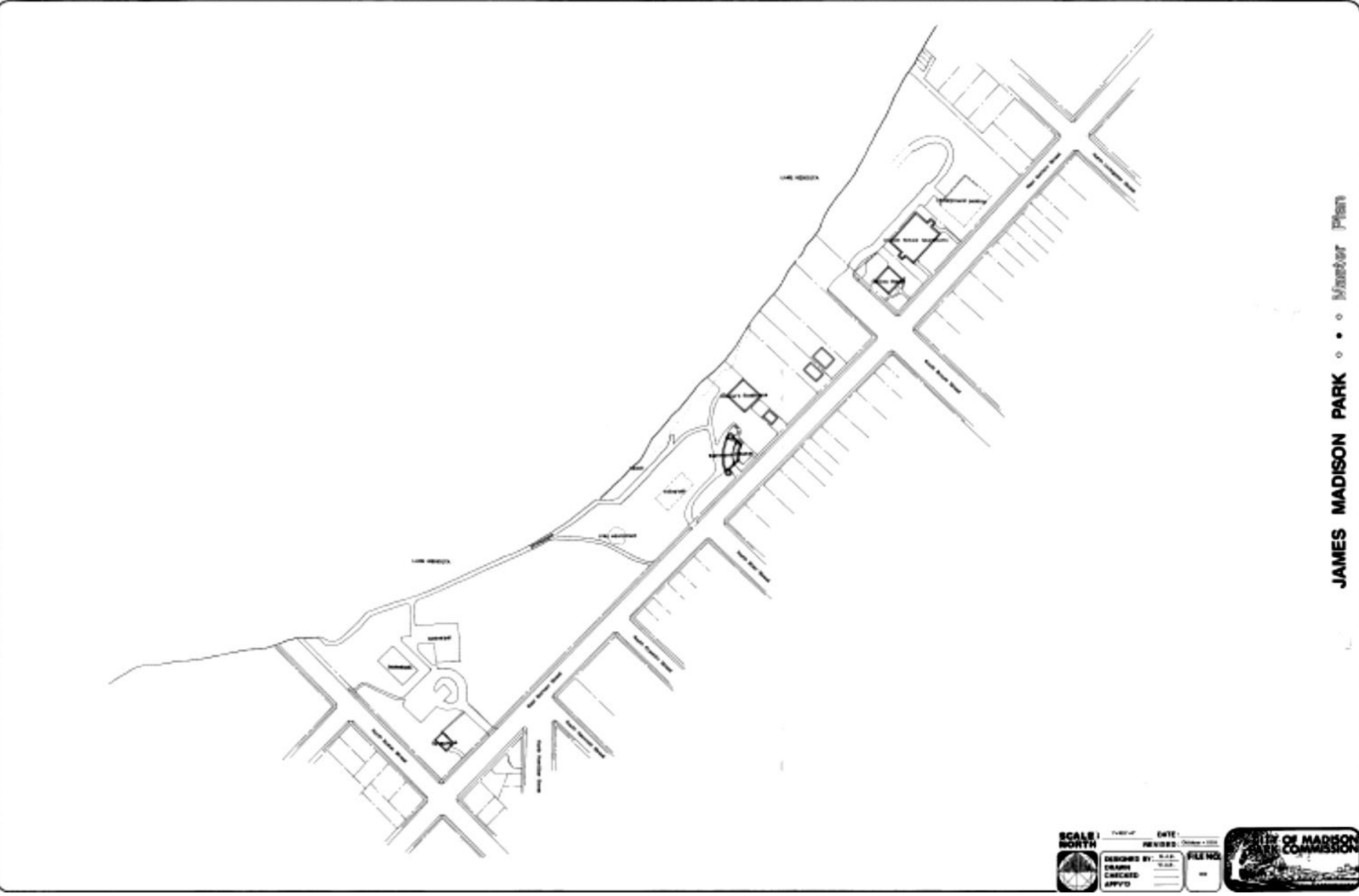
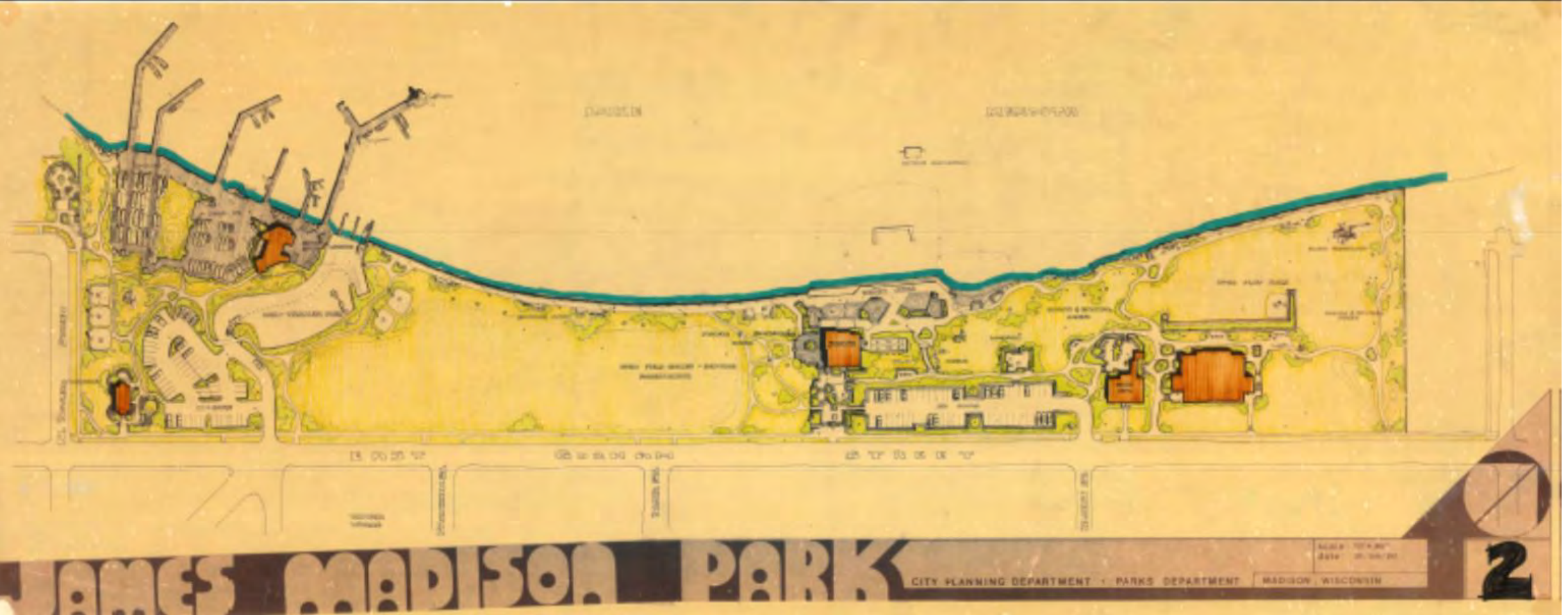
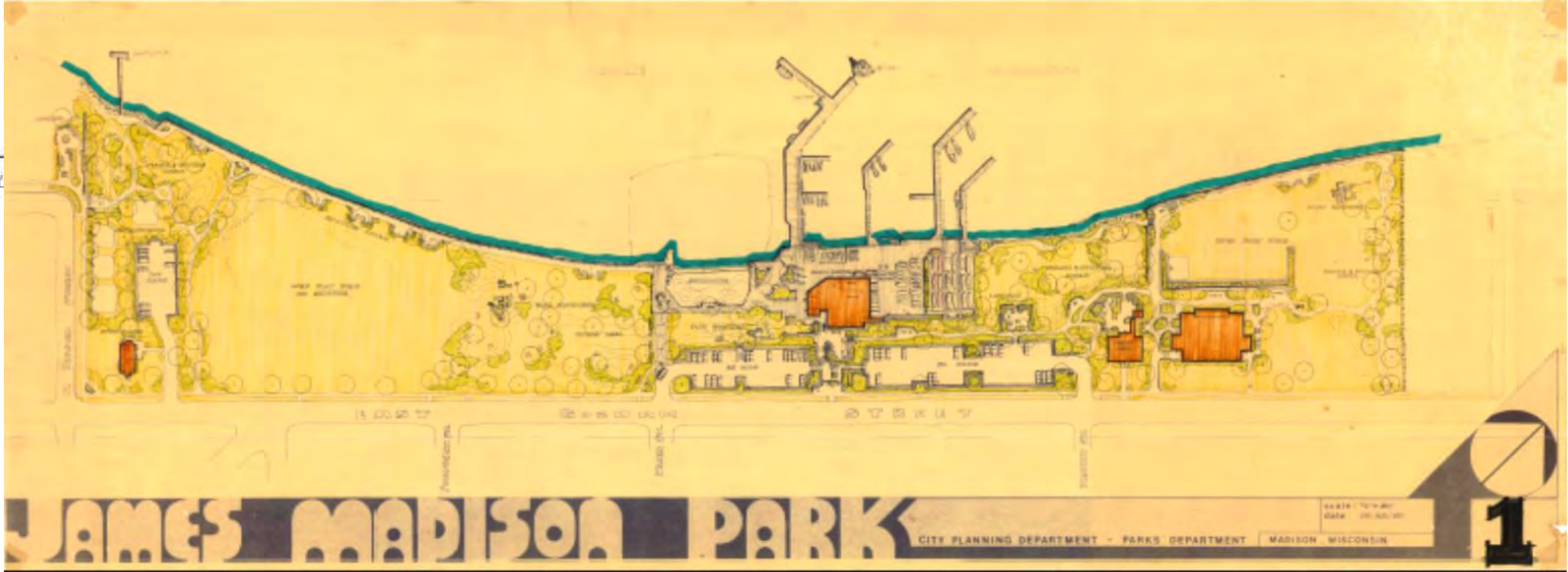
## Design Inspiration: Finding Inspiration in the Past



Plan for Conklin Park, 1940



Plans for James Madison Park





# Historical Development

Tell us what you think!



How might the past influence the future development of James Madison Park?

*Storytelling. . .*

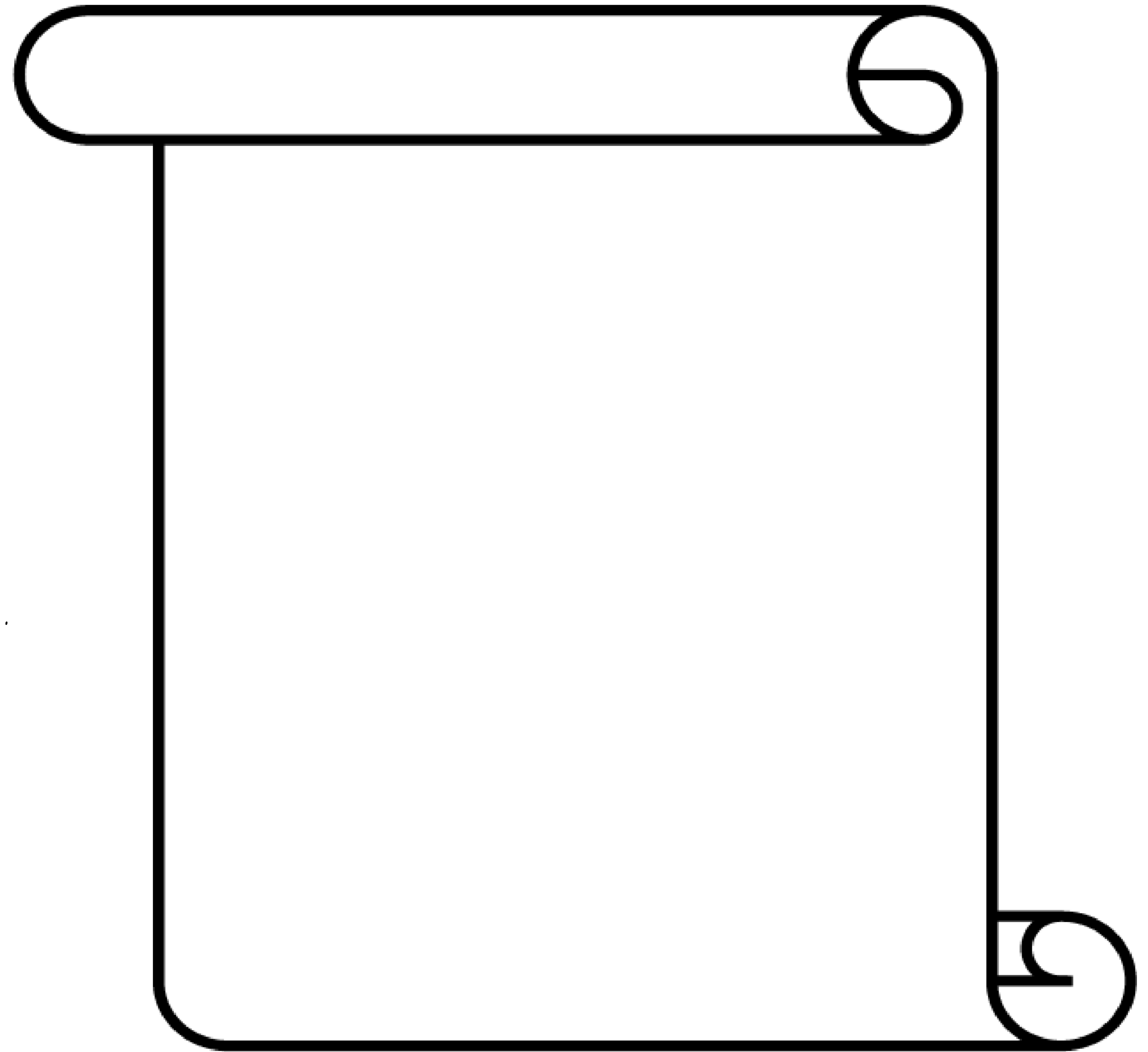
*Activities and games. . .*

*Waterfront recreational opportunities. . .*

*Deeper integration with neighborhood. . .*

*Richer integration with larger community.*

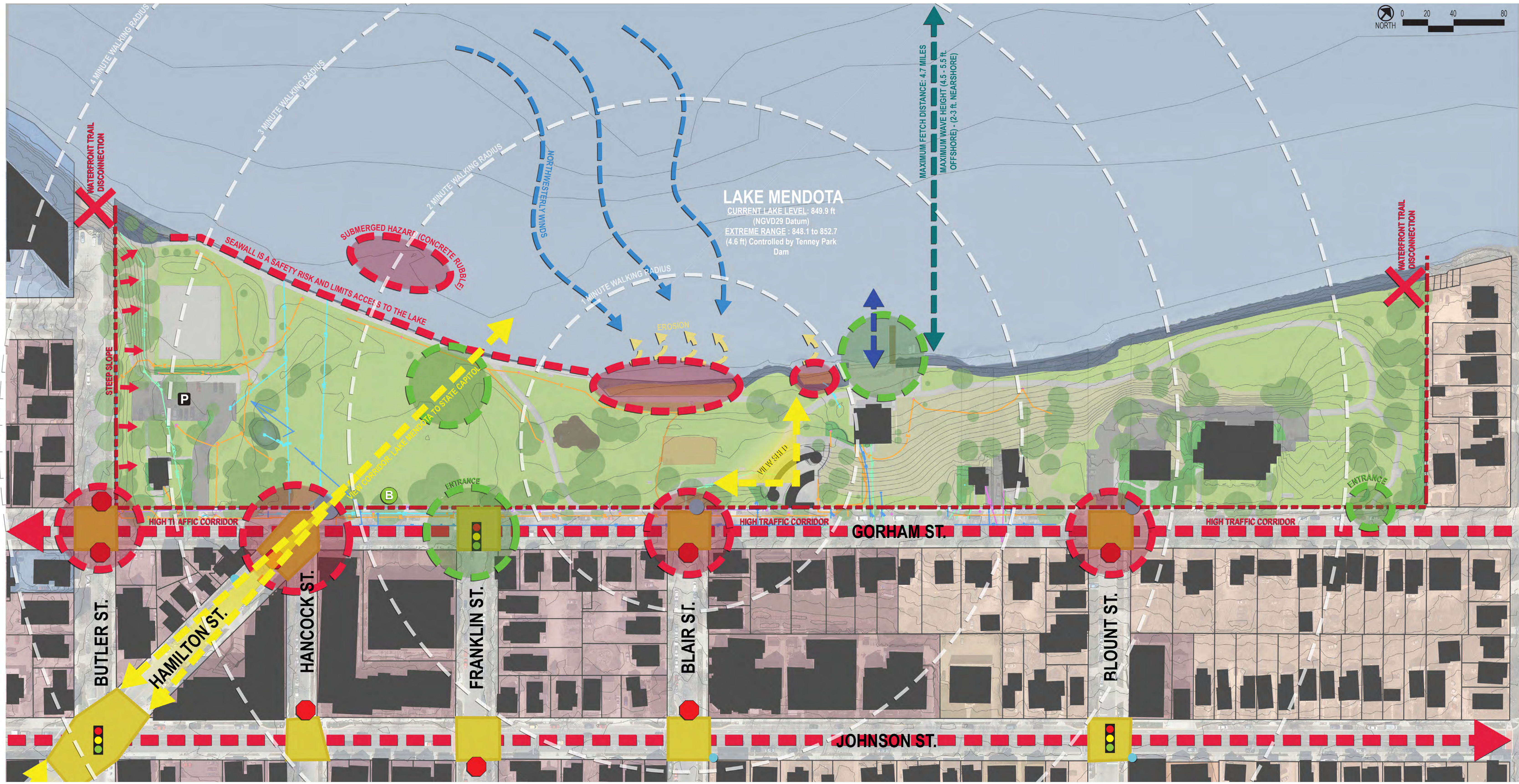
*Continued development and expansion.*





# Land & Water

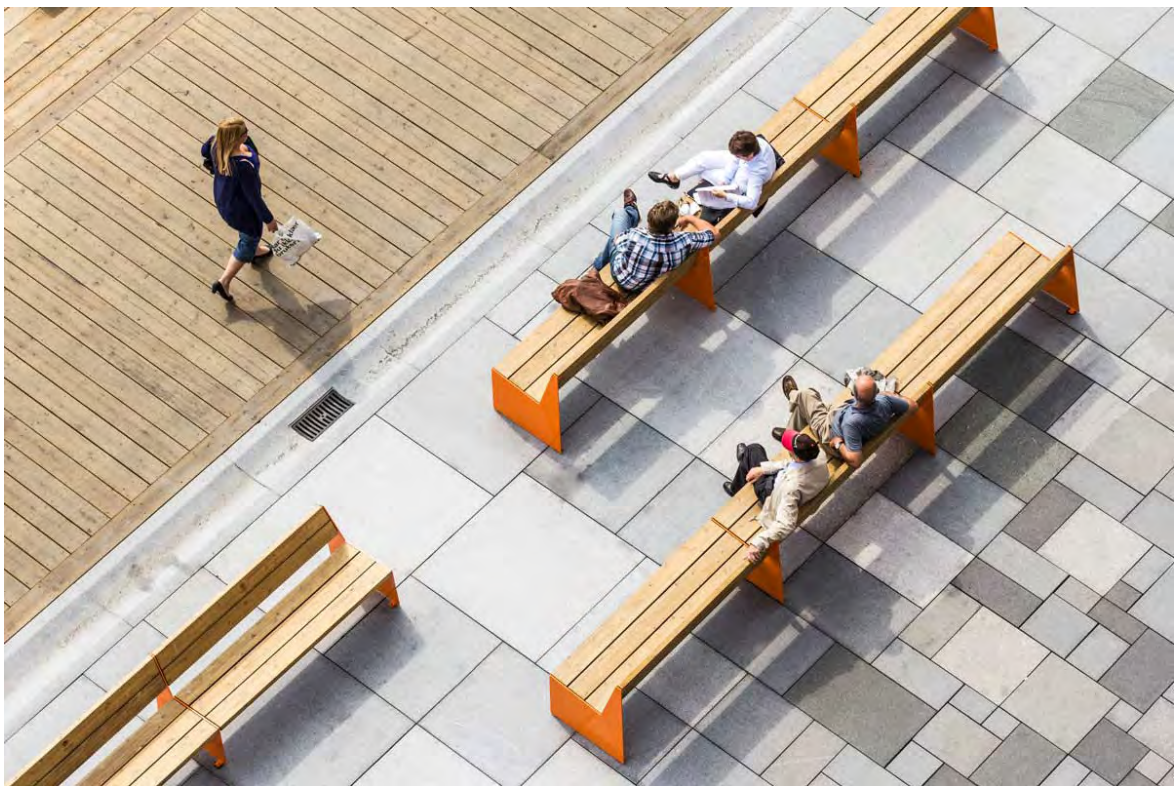
## Analysis





# Land & Water

Design Inspiration - Land

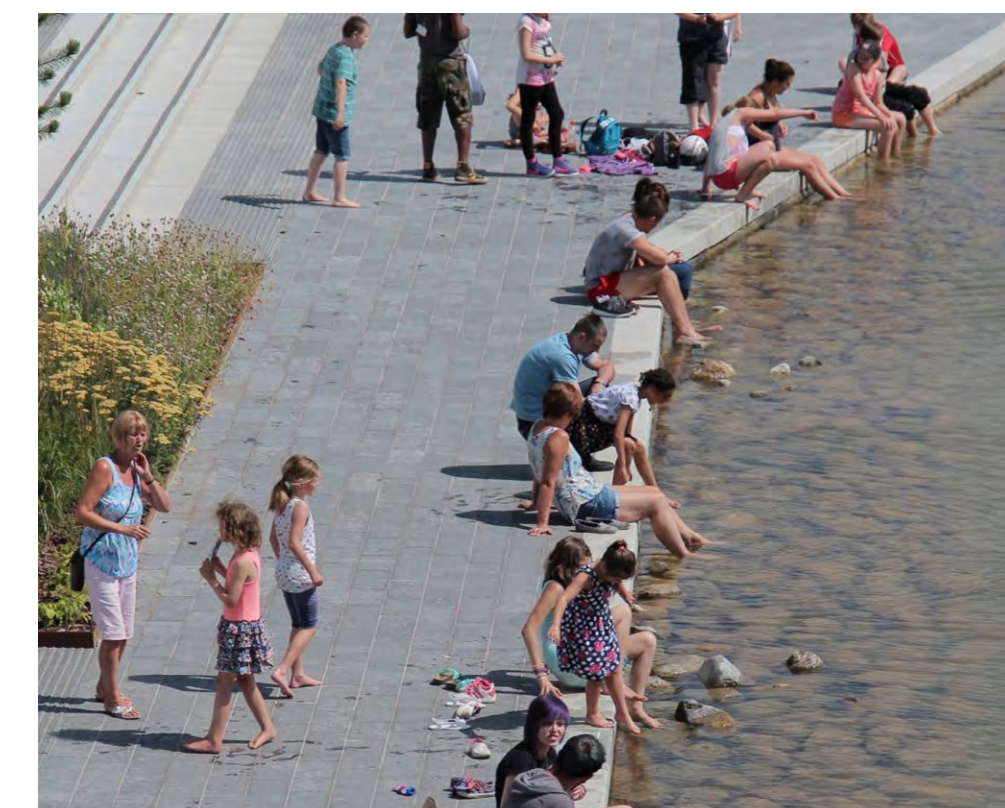
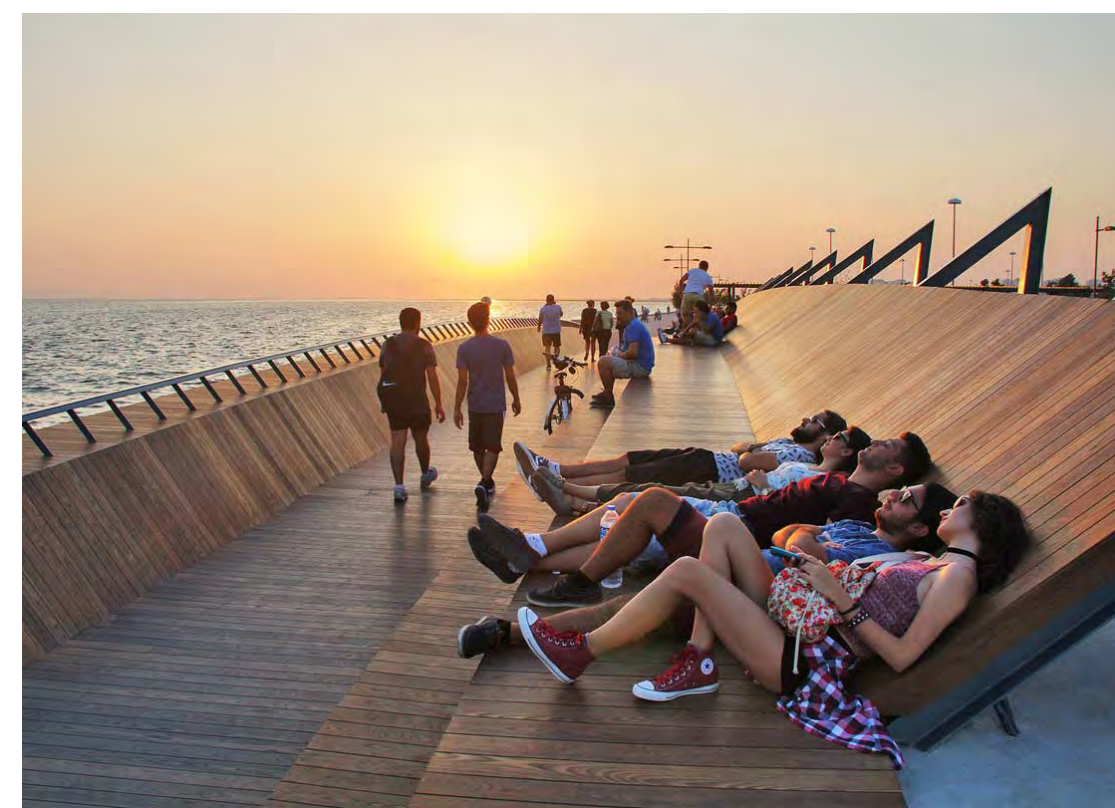
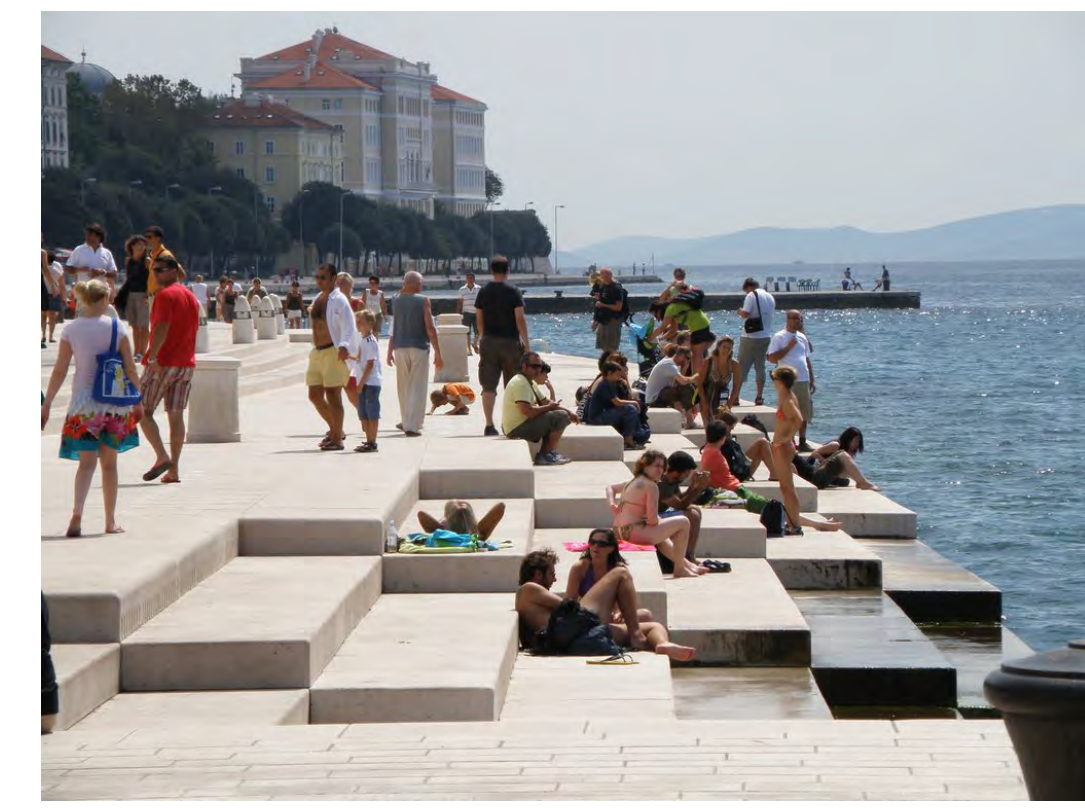




# Land & Water

## Design Inspiration - Water

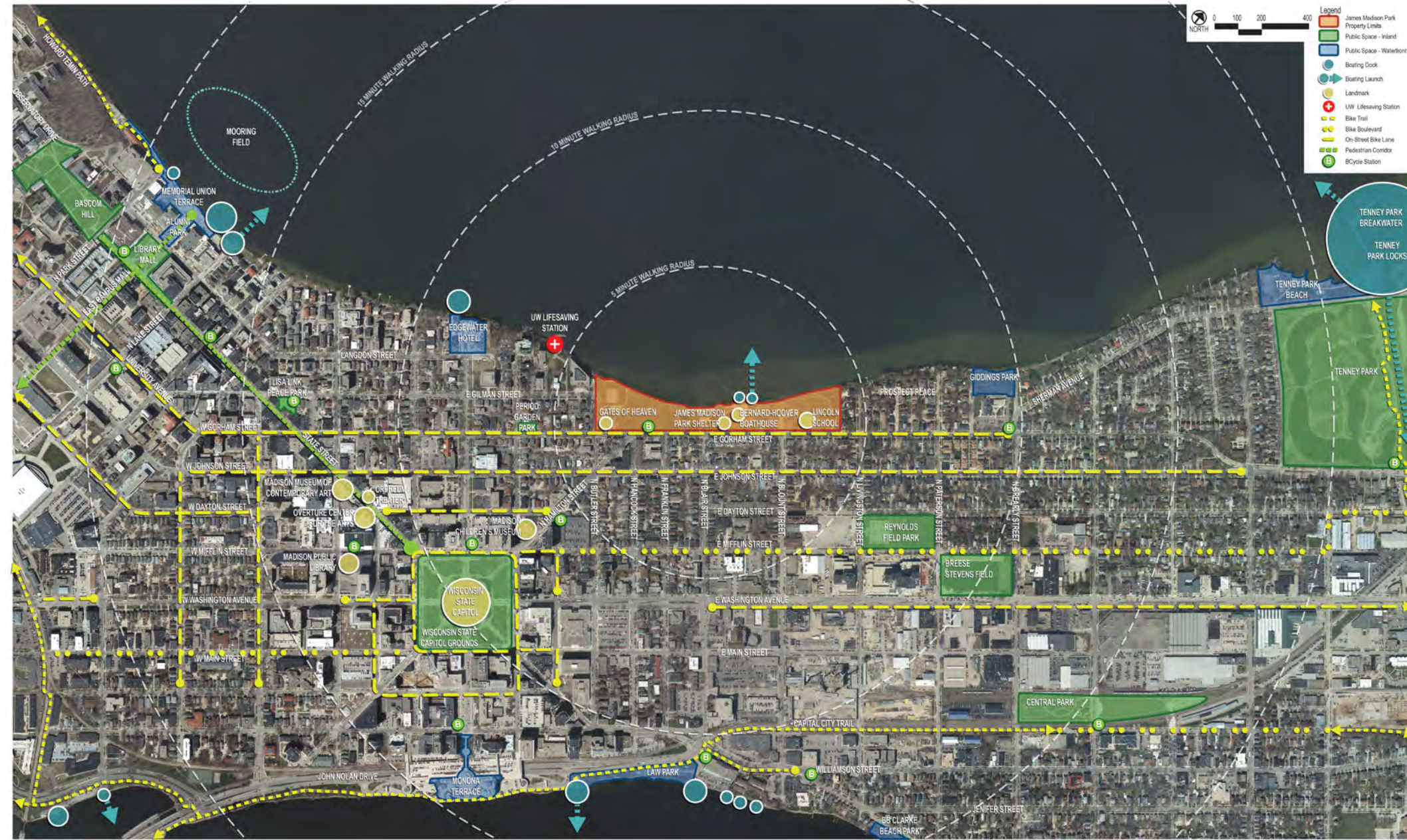
*play*  
**MADISON  
PARKS**



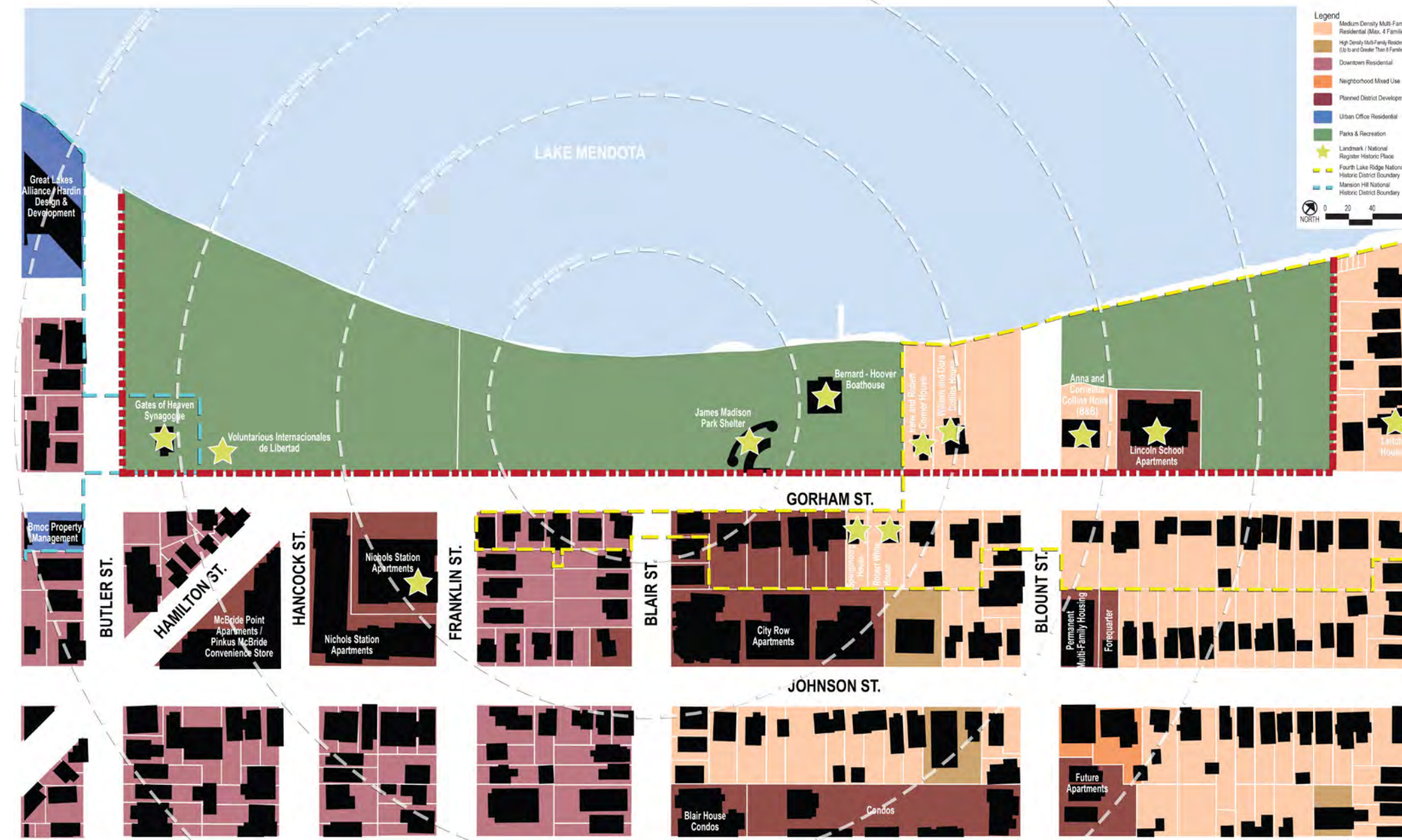


# Land & Water Inventory

Site Context



Land Use



Circulation



Topography



Land Coverage



Utilities

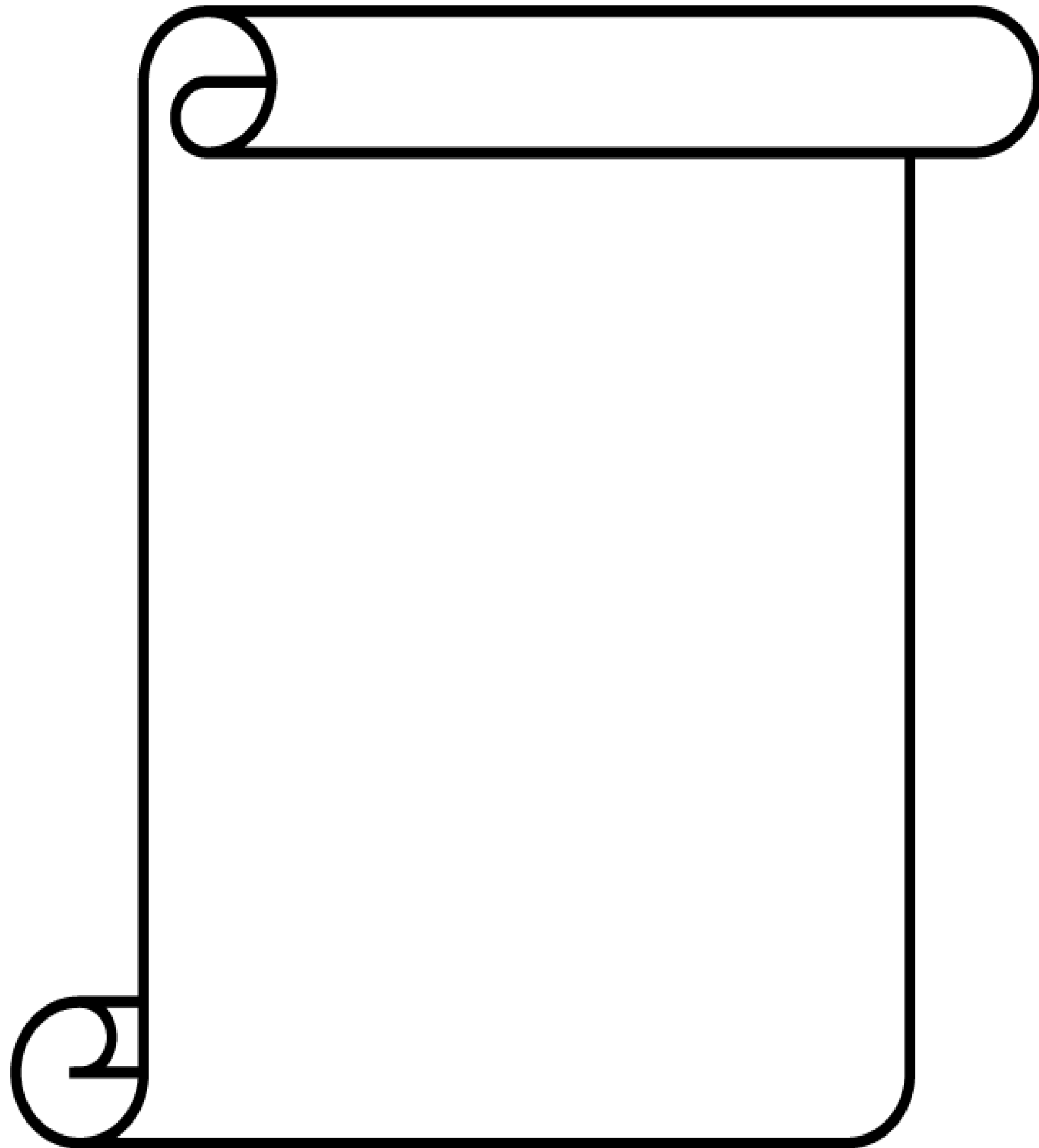




# Land & Water

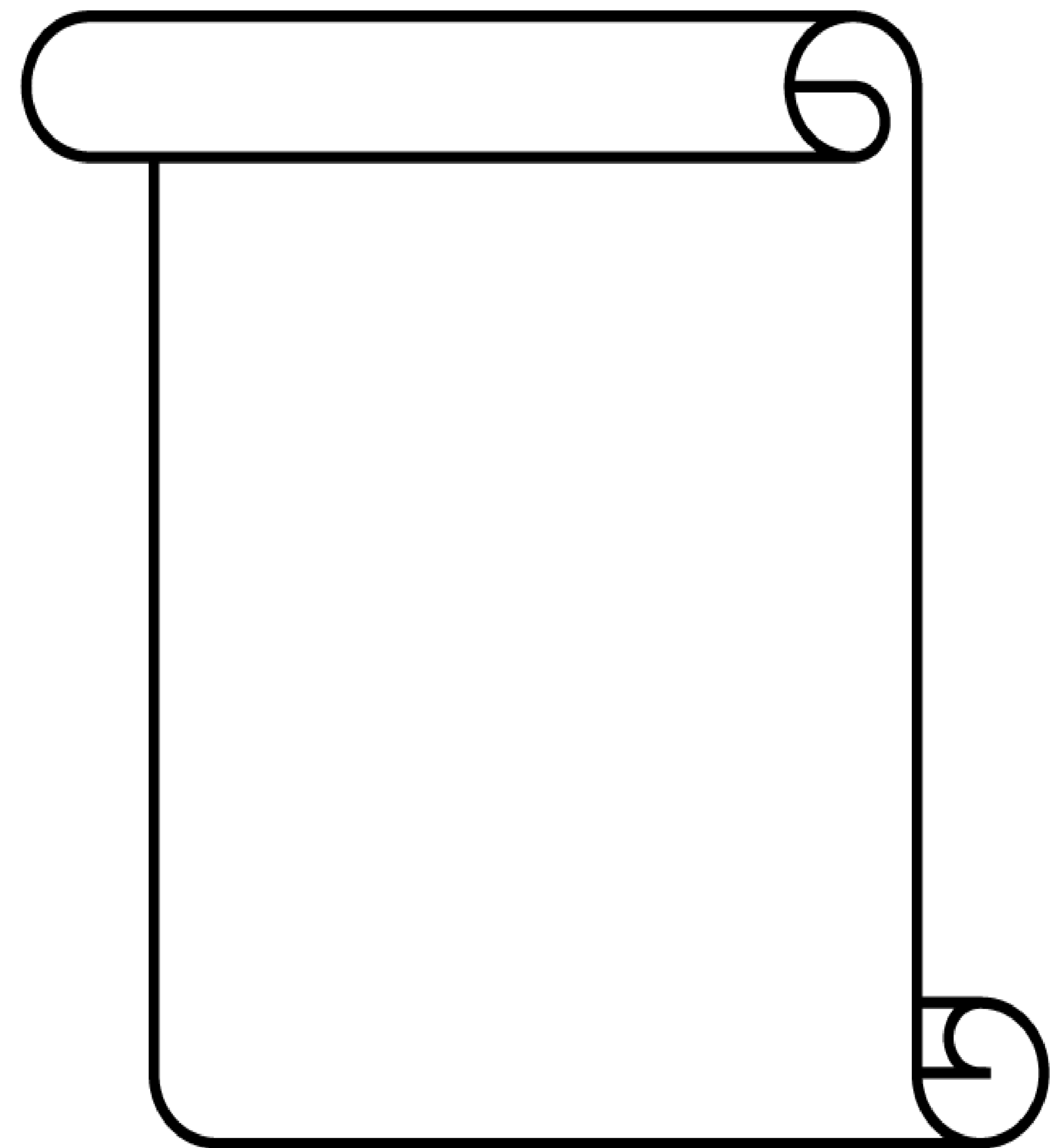
Tell us what you think!

What are your dreams for the park? What was your favorite experience in any outdoor public space?



## Food for Thought...

- Accessibility
- Active Recreation
- Passive Recreation
- Nature-based Play
- Boating
- Events
- Concessions
- Rentals
- Ornamental Gardens
- Produce Gardens
- Dog Park
- Winter Activities
- Beach
- Swimming
- Views of Park & Lake
- Other?





# Architecture

## Site Investigations

### James Madison Park – Existing Structures



A. Gates of Heaven – Event Venue and Neighborhood Polling Place

B. Park Shelter

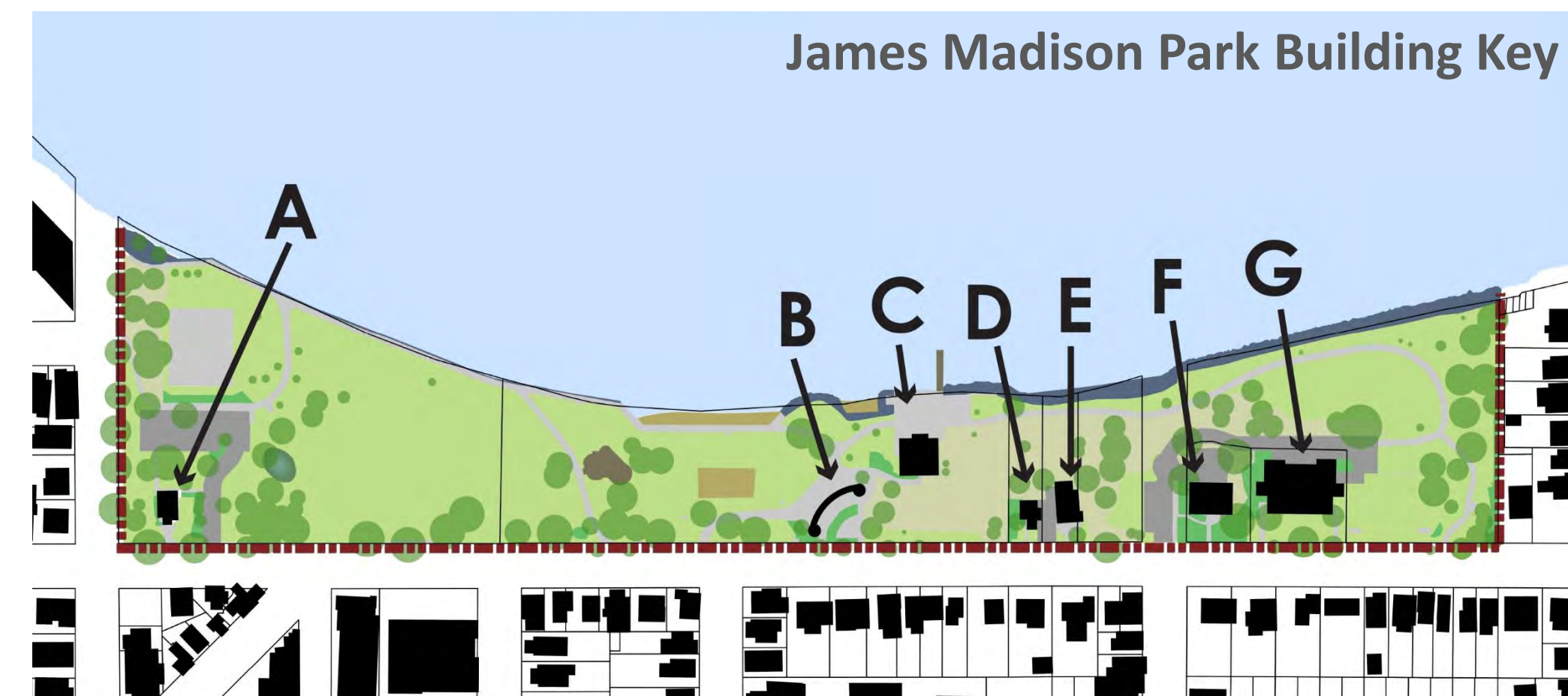
### James Madison Park – Leased Historic Structures



G. Lincoln School Apartments



F. Mendota Bed & Breakfast (William Collins House)



E. 646 E. Gorham (Cornelius Collins House)



C. Mendota Rowing Club (Bernard-Hoover Boat House)



D. 640 E. Gorham (Conner House)



# Architecture

## Design Inspiration



Natural Materials



Roof Top Use

Organic forms



Adaptable



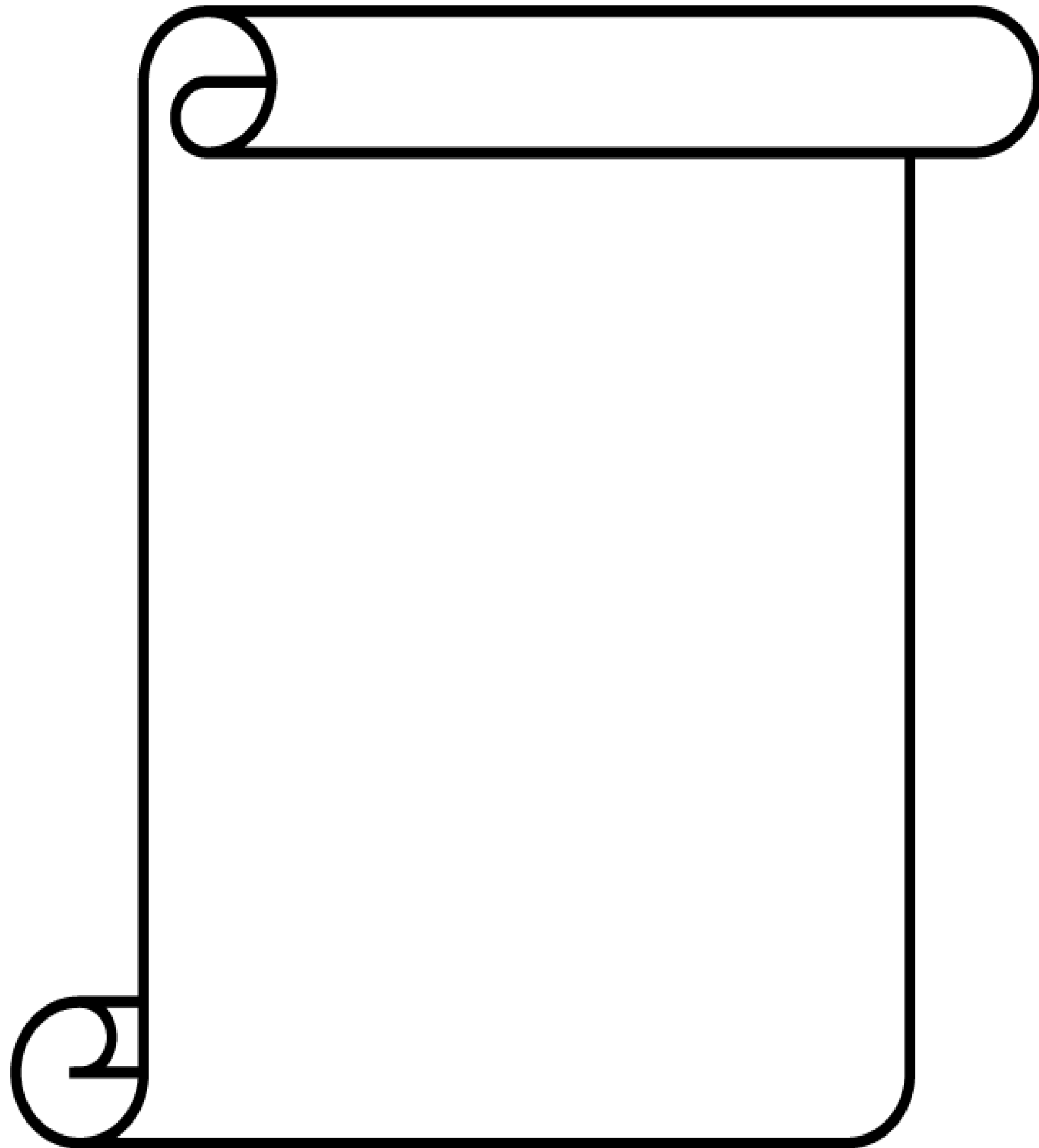
Dynamic Structures



# Architecture

Tell us what you think!

What improvements would make the park facilities more useful to our growing community?



## Food for Thought...

- Accessibility
- Activity Space
- Acoustics
- Art Installation
- Brides Room
- Community Room
- Concession Area
- Janitorial Support Space
- Life Guard Storage
- Showers
- Sense of Place
- Toilet Facilities
- Views of Park & Lake
- Visibility
- Other?

