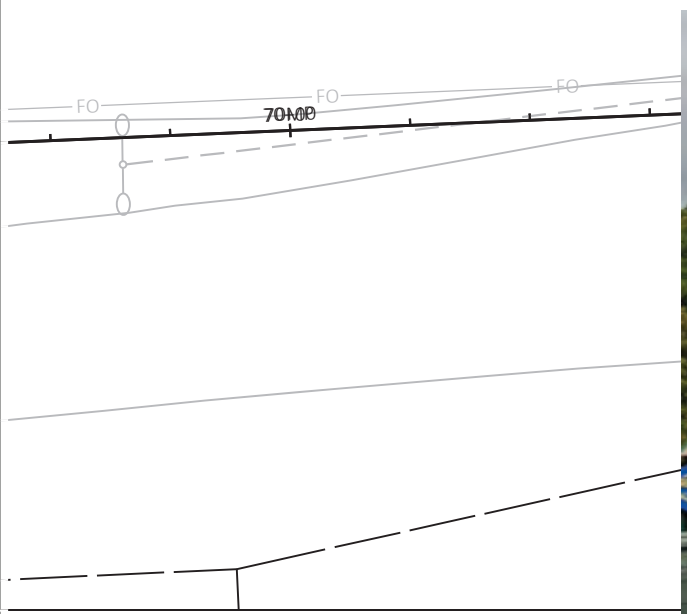


TREE REMOVAL LIST		
STA	NOTES	Reason
71'MP'+97.36		Conflict with proposed sidewalk
80'MP'+02.49		Conflict with proposed sidewalk
91'MP'+00.67		Conflict with proposed sidewalk
97'MP'+69.28		Conflict with proposed sidewalk
99'MP'+04.88		Conflict with proposed sidewalk
112'MP'+13.17		Conflict with proposed sidewalk
112'MP'+75.07		Conflict with proposed sidewalk
113'MP'+39.99		Conflict with proposed sidewalk
124'MP'+43.85		Conflict with proposed sidewalk
127'MP'+00.84		Conflict with proposed sidewalk
132'MP'+41.50		Conflict with proposed sidewalk
140'MP'+19.26	NOT ON CITY LIST	Conflict with proposed retaining wall redesign
145'MP'+51.41		Conflict with proposed sidewalk
145'MP'+93.06		Conflict with proposed sidewalk
147'MP'+54.73		Conflict with proposed sidewalk
155'MP'+01.52		Conflict with proposed sidewalk
170'MP'+77.62	NOT ON CITY LIST	Excavation impacts from depressed path
171'MP'+39.47	NOT ON CITY LIST	Excavation impacts from depressed path
171'MP'+87.51	NOT ON CITY LIST	Excavation impacts from depressed path
190'MP'+21.71		Conflict with proposed sidewalk
190'MP'+36.15		Conflict with proposed sidewalk/retaining wall excavation
190'MP'+92.05	NOT ON CITY LIST	Conflict with proposed sidewalk/retaining wall excavation
190'MP'+92.48		Conflict with proposed sidewalk/retaining wall excavation
191'MP'+56.58		Conflict with proposed sidewalk/retaining wall excavation
191'MP'+81.94		Conflict with proposed sidewalk/retaining wall excavation
191'MP'+85.19		Conflict with proposed sidewalk/retaining wall excavation
192'MP'+03.22		Conflict with proposed sidewalk/retaining wall excavation
192'MP'+10.00	Forestry - not in topo	Conflict with proposed sidewalk/retaining wall excavation
192'MP'+47.77		Conflict with proposed sidewalk/retaining wall excavation
192'MP'+55.00	Forestry - not in topo	Conflict with proposed sidewalk/retaining wall excavation
192'MP'+90.85		Conflict with proposed sidewalk/retaining wall excavation
192'MP'+95.00	Forestry - not in topo	Conflict with proposed sidewalk/retaining wall excavation
193'MP'+35.37		Conflict with proposed sidewalk/retaining wall excavation
194'MP'+47.10		Grading impacts
199'MP'+08.04		Conflict with proposed sidewalk



TREE REMOVAL SUMMARY

Tree Removed

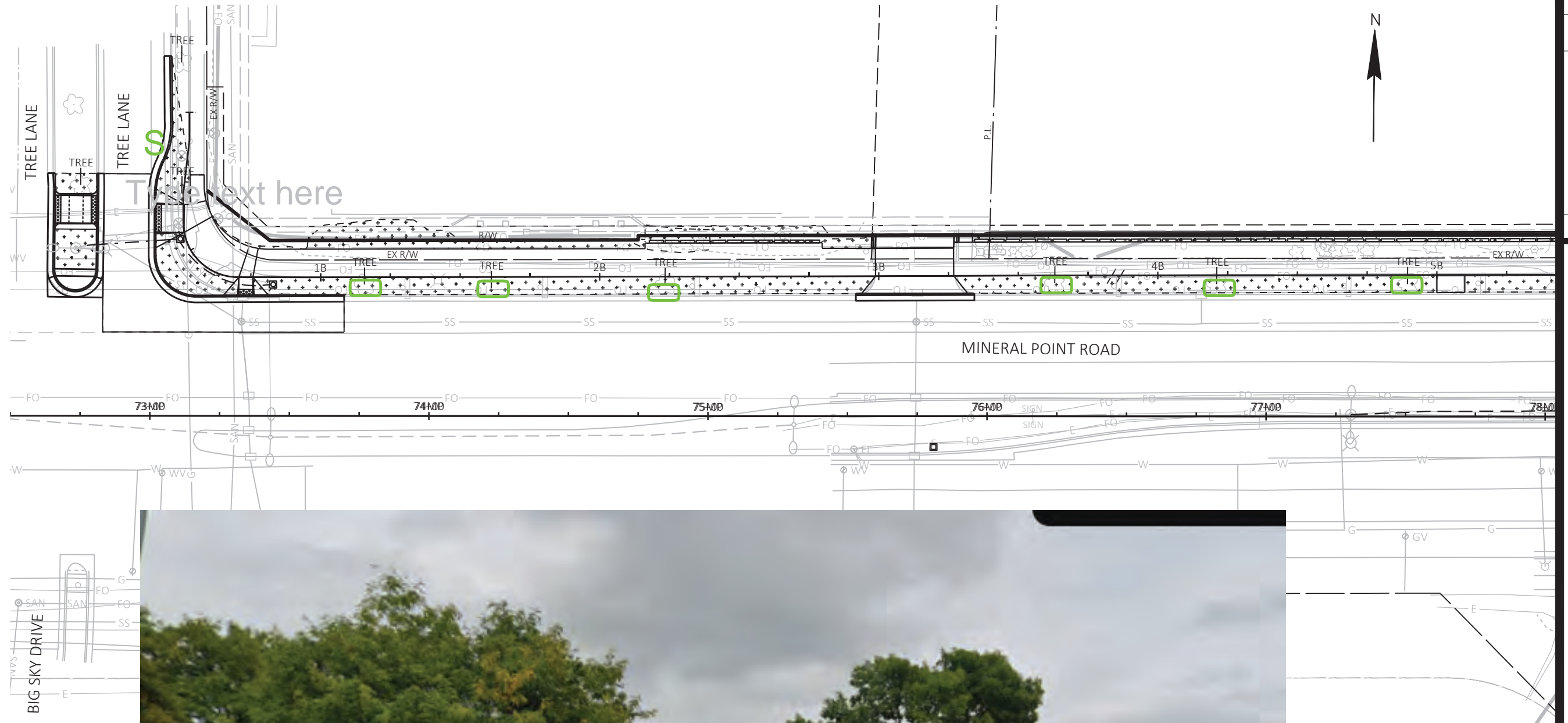
- Existing street trees to be removed: 20
- Possible poor condition east of Randolph: 7
- Possible poor condition tree east of Island: 1
- Existing trees near Garner Park to be removed: 15
[With design alternative this is reduced reduce to 8]

October 24, 2023

60631225P
 LANDSCAPING PLAN
 MINERAL POINT ROAD WIDENED SIDEWALK
 CITY OF MADISON
 CITY OF MADISON, DANE COUNTY, WI
 CONTRACT NO: 60631225C
 60631225P
 L-1

MARK	REVISION	DATE	BY
60631225P	Designed By: AECOM	Date: 2023-10-10	Scale: 1 IN=40 FT

FILE NAME : C:\P\WORKING\AECOM_DS20_NA_2019\CAMERON.ENTWISTLE@AECOM.COM\190957\050101_TREE_EXHIBIT.DWG
 LAYOUT NAME - A
 LAST PLOT DATE - 2023-10-10



Trees Preserved

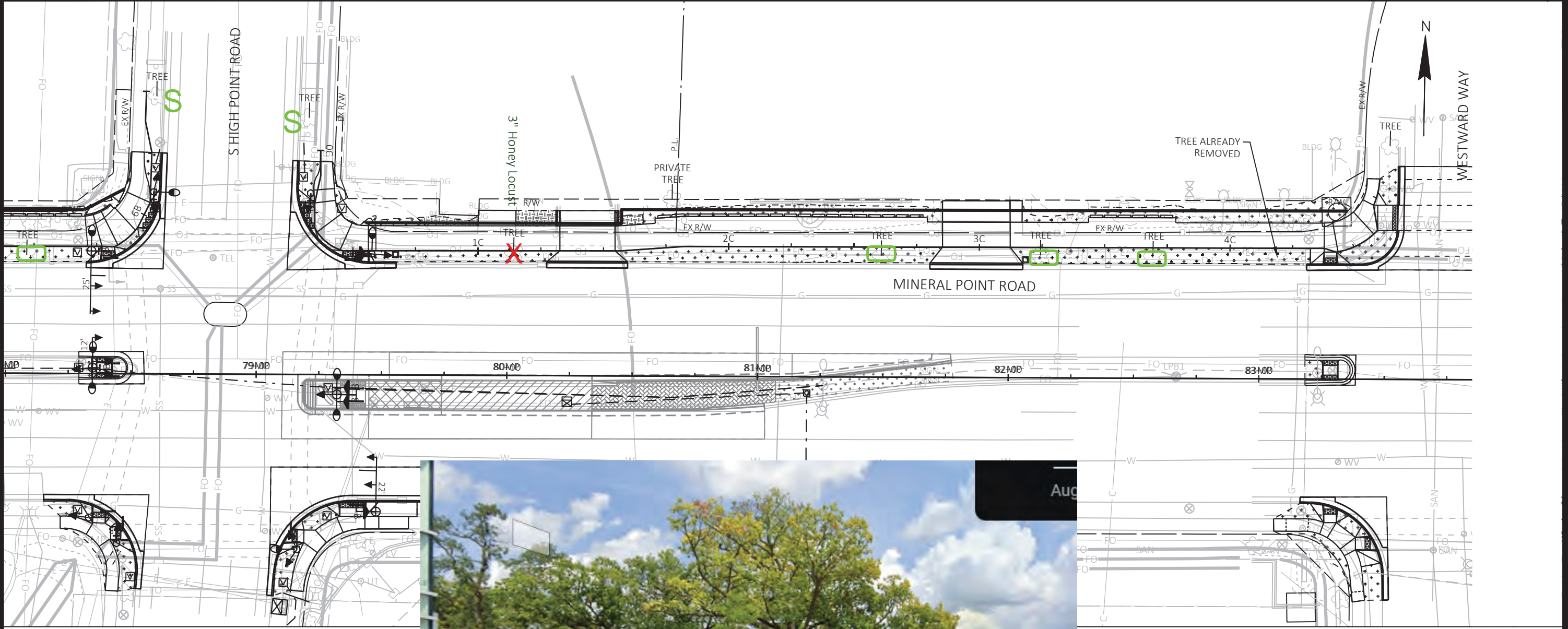
MARK	REVISION	DATE	BY
	Designed By: AECOM	Date: 2023-10-10	60631225P
	Scale: 1 IN:40 FT		

60631225P
 LANDSCAPING PLAN
 MINERAL POINT ROAD WIDENED SIDEWALK
 CITY OF MADISON
 CITY OF MADISON, DANE COUNTY, WI
 CONTRACT NO: 60631225C



60631225P

L-2



Tree Removed

MARK	REVISION	DATE	BY
	Designed By: AECOM	2023-10-10	
	60631225P		

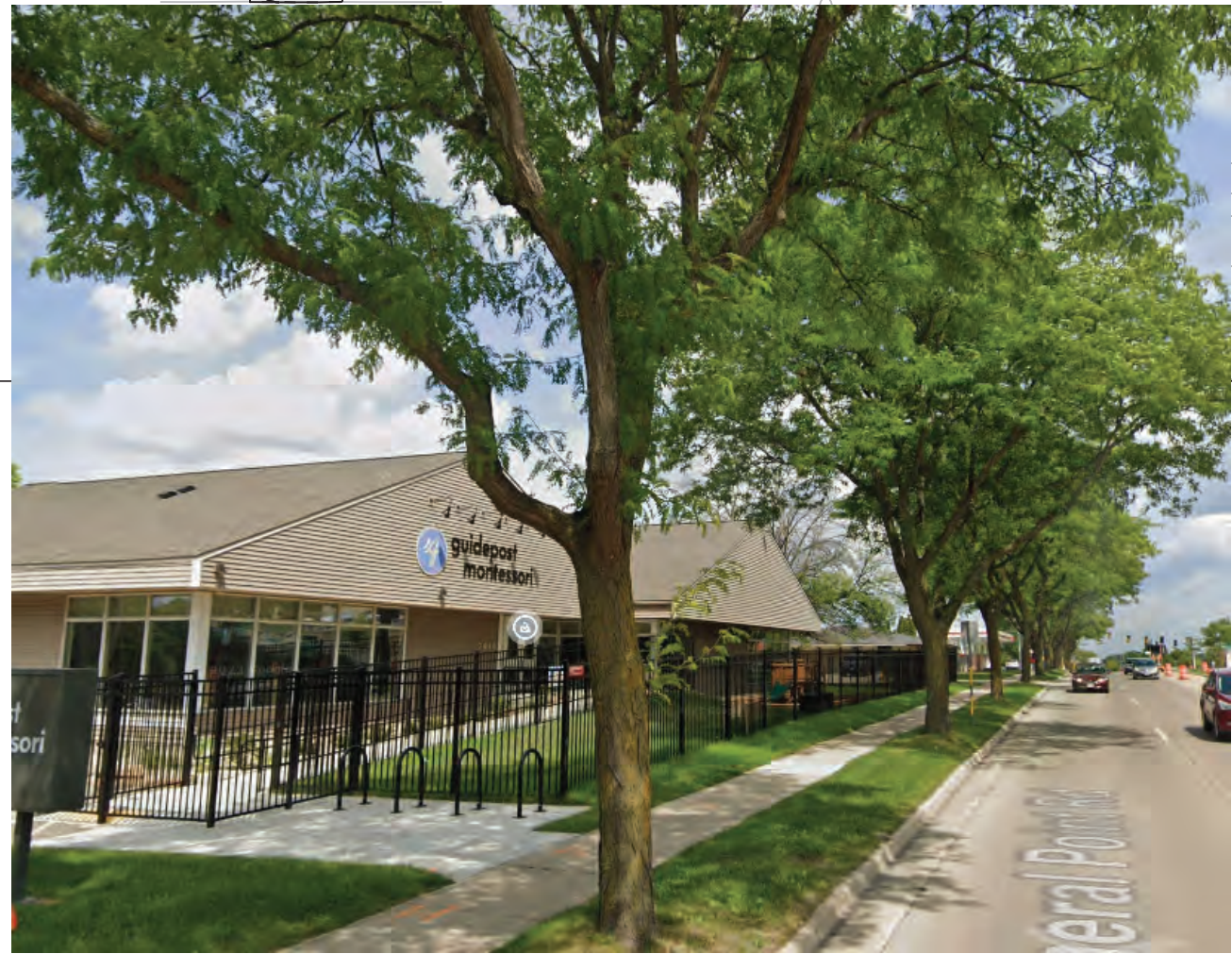
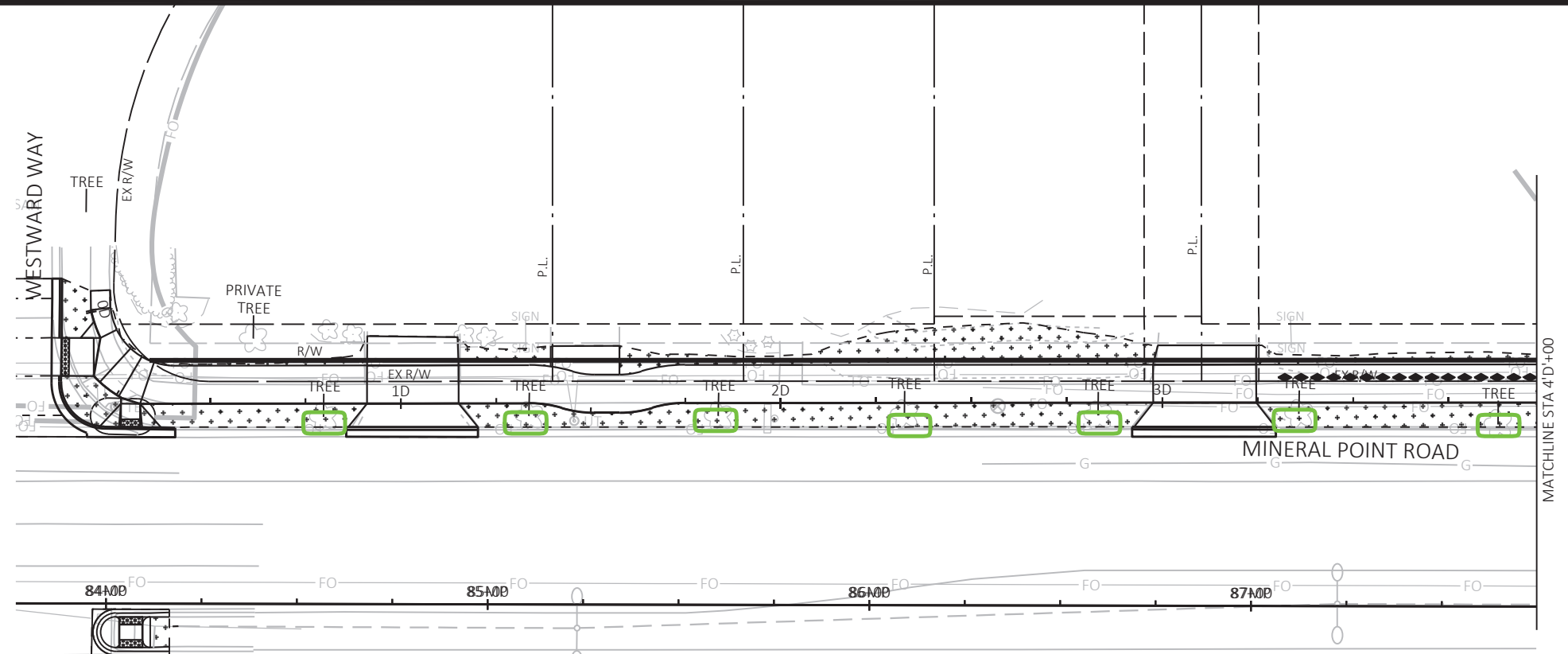
60631225P
 CITY OF MADISON, DANE COUNTY, WI
 CONTRACT NO: 60631225C

LANDSCAPING PLAN
 MINERAL POINT ROAD WIDENED SIDEWALK
 CITY OF MADISON



60631225P

L-3



Trees Preserved

MARK	REVISION	DATE	BY
60631225P	Designed By: AECOM	2023-10-10	

60631225P
 LANDSCAPING PLAN
 MINERAL POINT ROAD WIDENED SIDEWALK
 CITY OF MADISON
 CITY OF MADISON, DANE COUNTY, WI
 CONTRACT NO: 60631225C



60631225P

L-4



Tree Removed



Trees Preserved

MARK	REVISION	DATE	BY
	Designed By: AECOM	Date: 2023-10-10	
	60631225P		Scale: 1 IN:40 FT

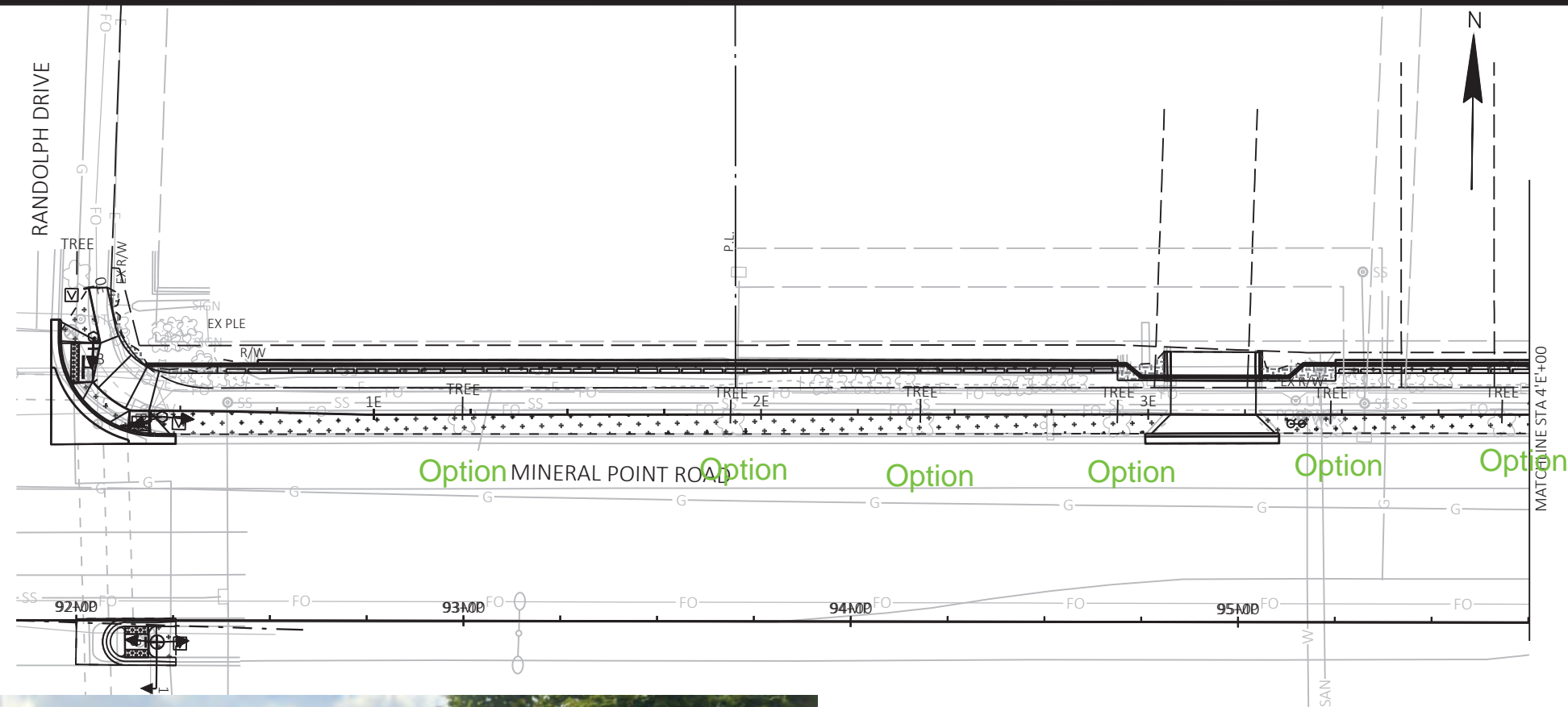
60631225P
 CITY OF MADISON, DANE COUNTY, WI
 CONTRACT NO: 60631225C

LANDSCAPING PLAN
 MINERAL POINT ROAD WIDENED SIDEWALK
 CITY OF MADISON

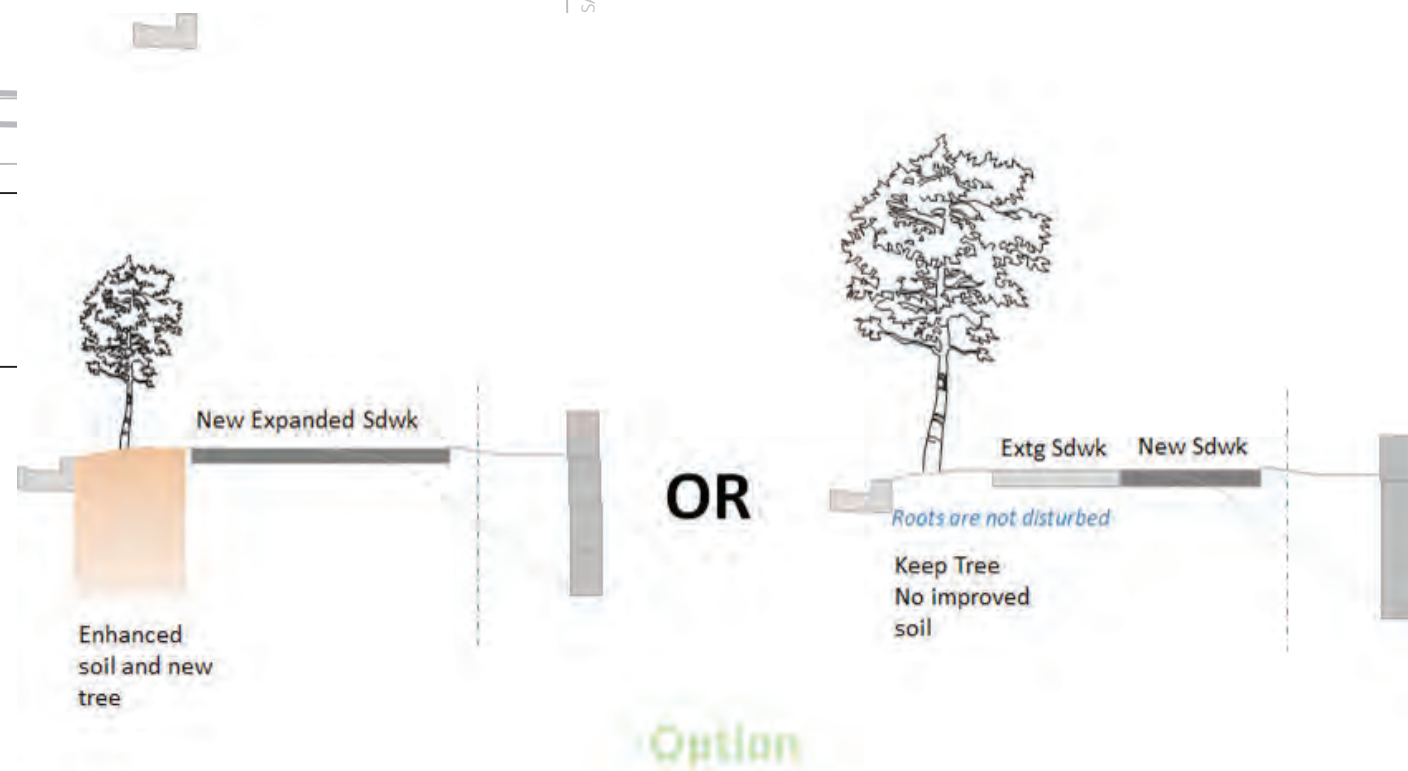


60631225P

L-5



Trees with Options



MARK	REVISION	DATE	BY
60631225P	Designed By: AECOM	2023-10-10	Scale: 1 IN:40 FT

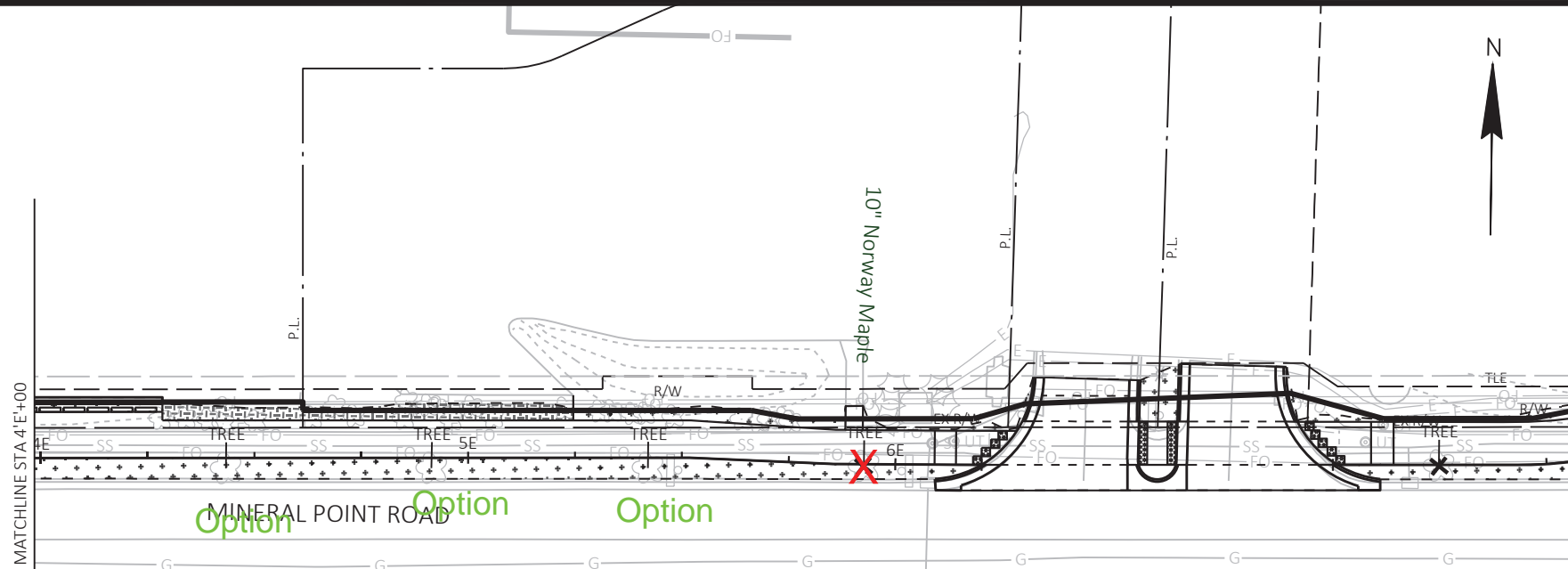
60631225P
 CITY OF MADISON, DANE COUNTY, WI
 CONTRACT NO: 60631225C

LANDSCAPING PLAN
 MINERAL POINT ROAD WIDENED SIDEWALK
 CITY OF MADISON



60631225P

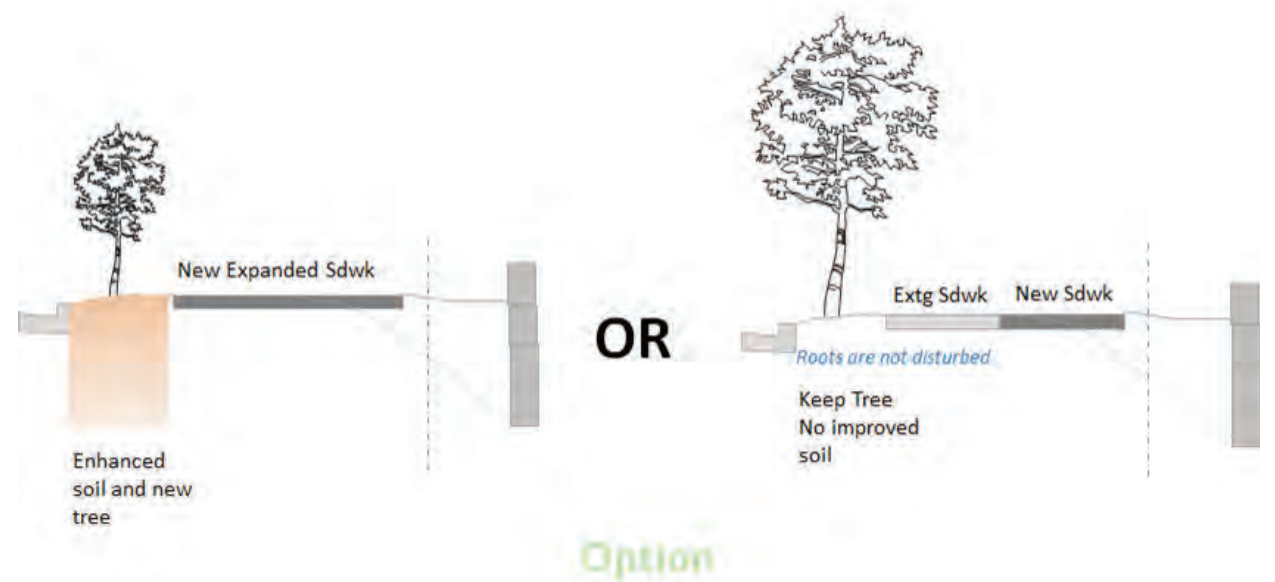
L-6



Tree removed



Trees with Options



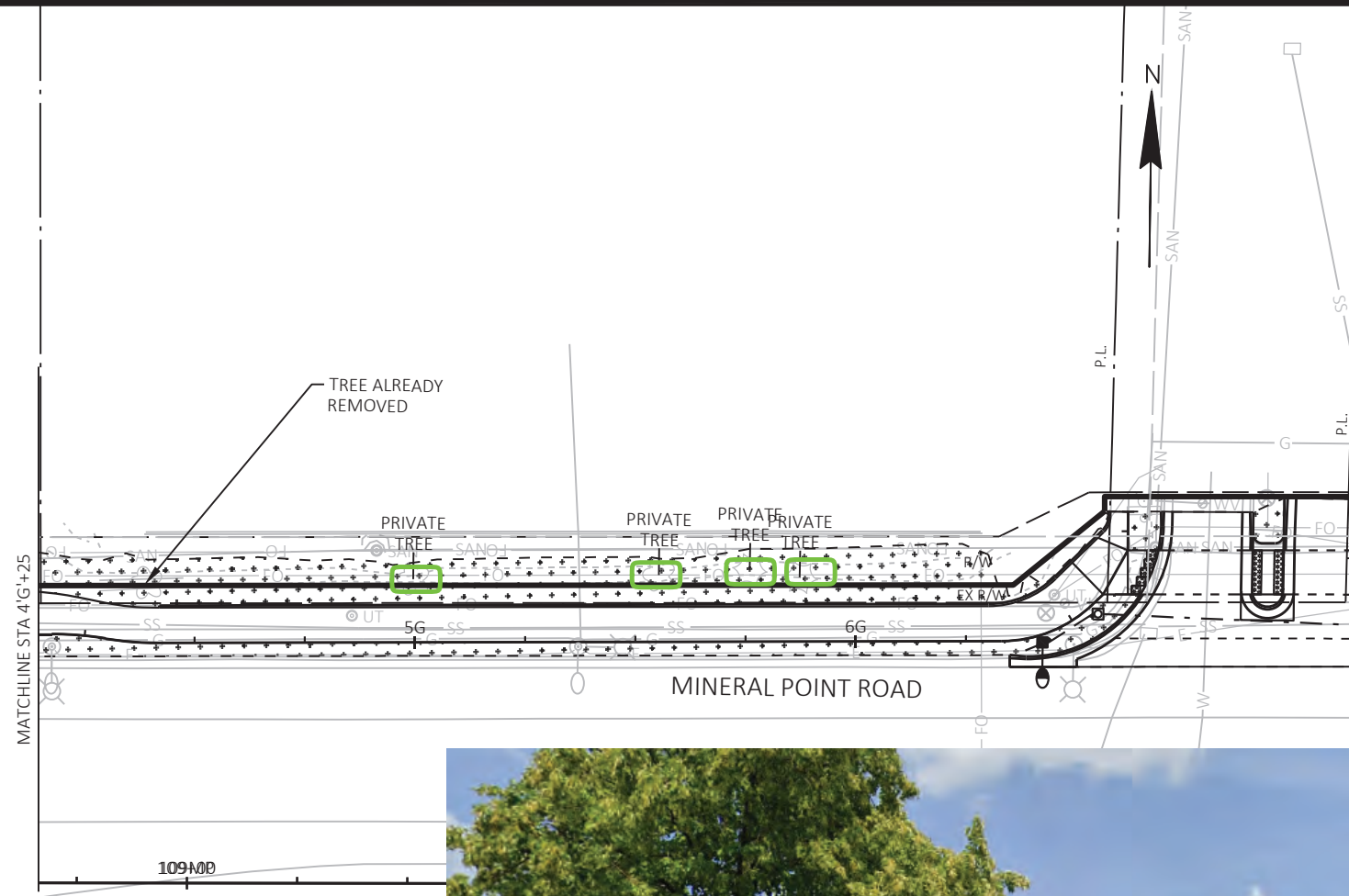
MARK	REVISION	DATE	BY
	Designed By: AECOM	2023-10-10	
	60631225P		

60631225P
 CITY OF MADISON, DANE COUNTY, WI
 CONTRACT NO: 60631225C



60631225P

L-7



Trees Preserved

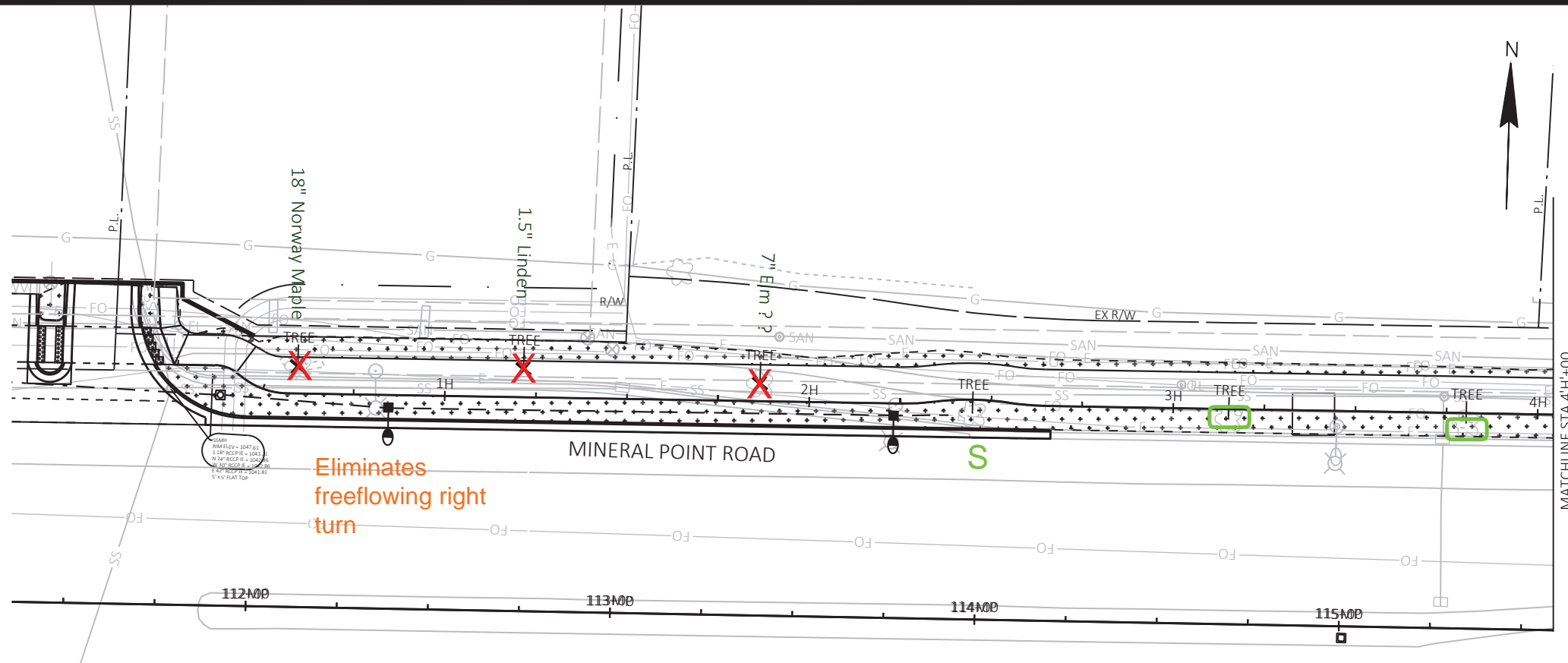
MARK	REVISION	DATE	BY

60631225P
 CITY OF MADISON, DANE COUNTY, WI
 CONTRACT NO: 60631225C



60631225P

L-10



Eliminates
freeflowing right
turn



Tree Removed



Tree Removed

MARK	REVISION	DATE	BY
60631225P	Designed By: AECOM	2023-10-10	

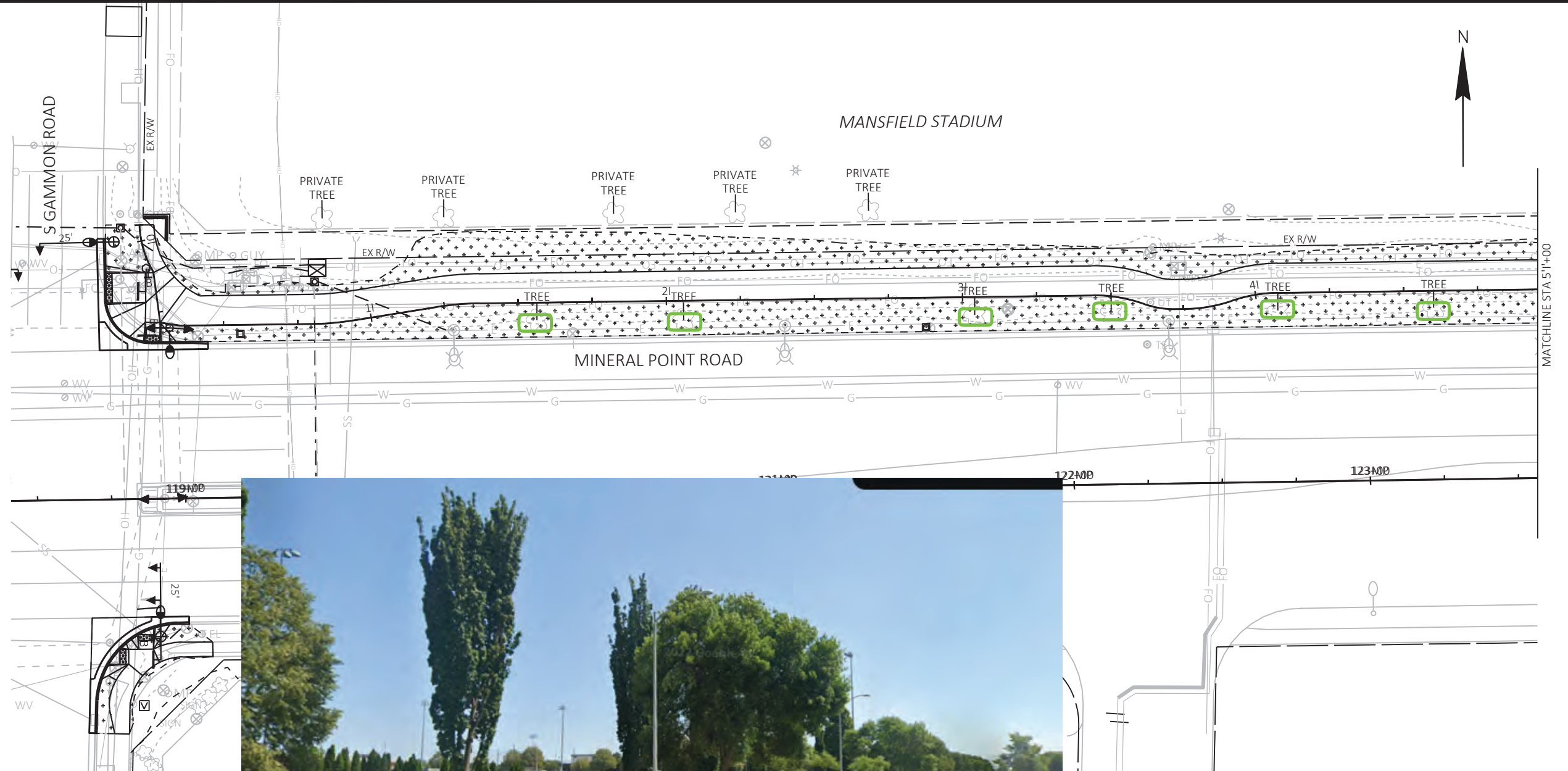
60631225P
CITY OF MADISON, DANE COUNTY, WI
CONTRACT NO: 60631225C

LANDSCAPING PLAN
MINERAL POINT ROAD WIDENED SIDEWALK
CITY OF MADISON



60631225P

L-11



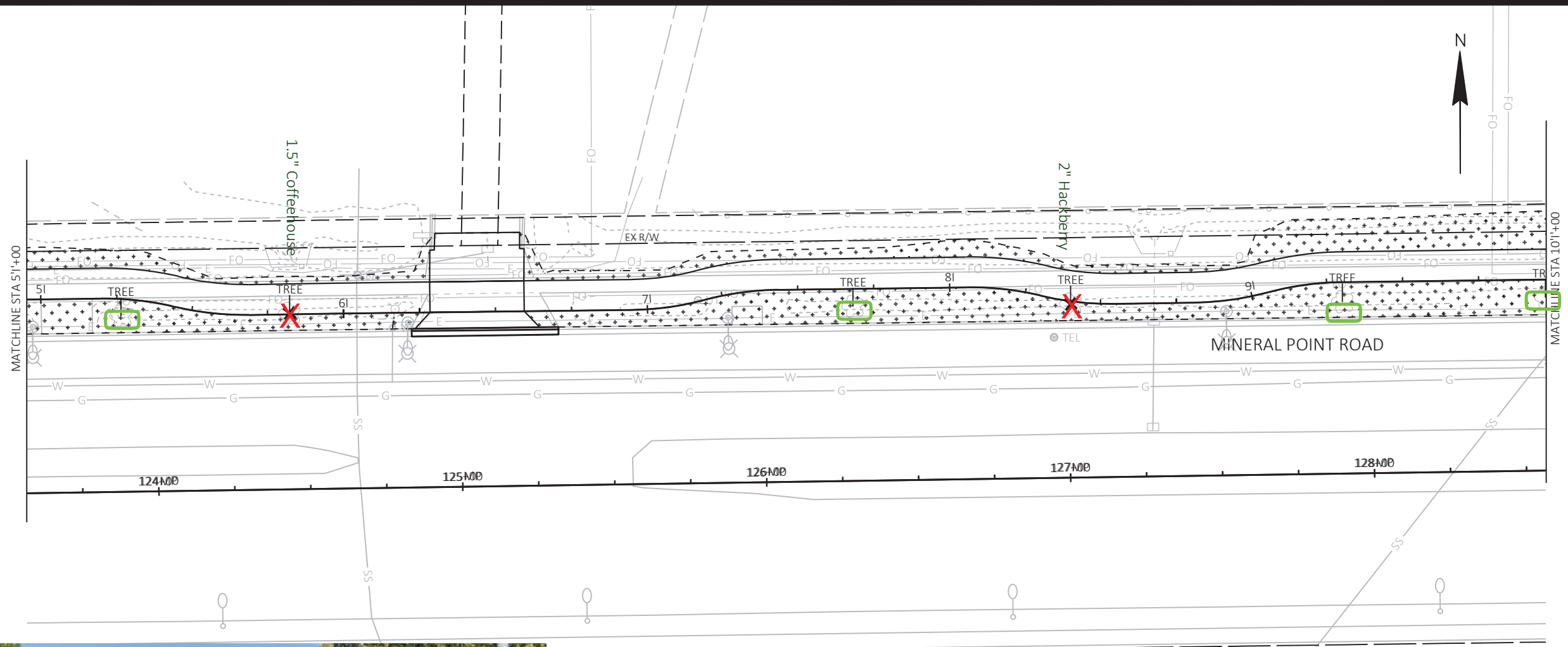
Trees Preserved

MARK	REVISION	DATE	BY
	Designed By: AECOM	Date: 2023-10-10	60631225P
			Scale: 1 IN=40 FT

60631225P
 LANDSCAPING PLAN
 MINERAL POINT ROAD WIDENED SIDEWALK
 CITY OF MADISON
 CONTRACT NO: 60631225C



60631225P
 L-13



Small Tree Removed



Small Tree Removed

MARK	REVISION	DATE	BY
	Designed By: AECOM	Date: 2023-10-10	60631225P
			Scale: 1 IN=40 FT

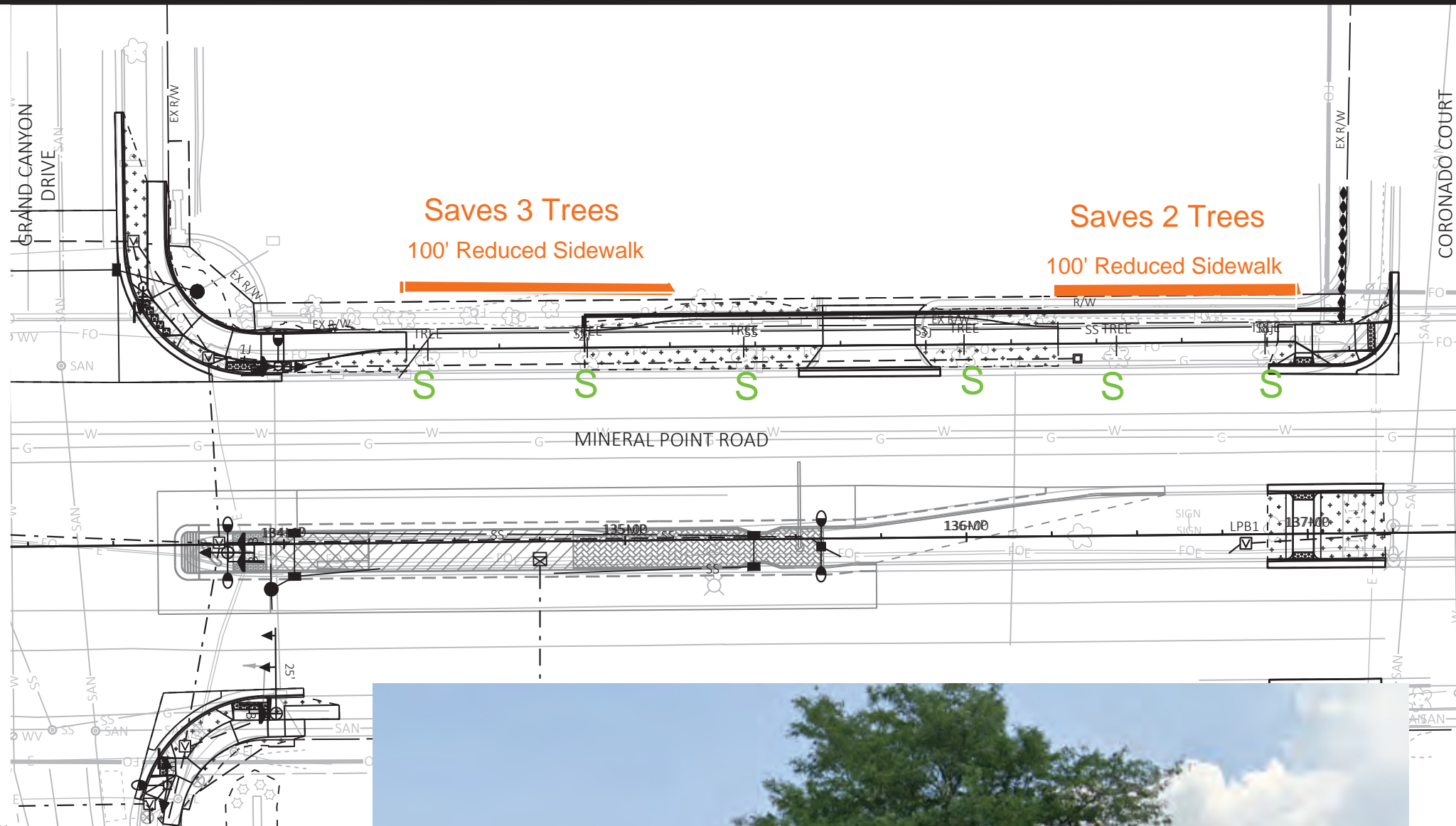
60631225P
 CITY OF MADISON, DANE COUNTY, WI
 CONTRACT NO: 60631225C
 LANDSCAPING PLAN
 MINERAL POINT ROAD WIDENED SIDEWALK
 CITY OF MADISON



60631225P

L-14

FILE NAME : C:\P\WORKING\AECOM_DS20_NA_2019\CAMERON.ENTWISTLE@AECOM.COM\00190957\050101_TREE_EXHIBIT.DWG
 LAYOUT NAME - 1(2)
 LAST PLOT DATE - 2023-10-10



Trees Preserved

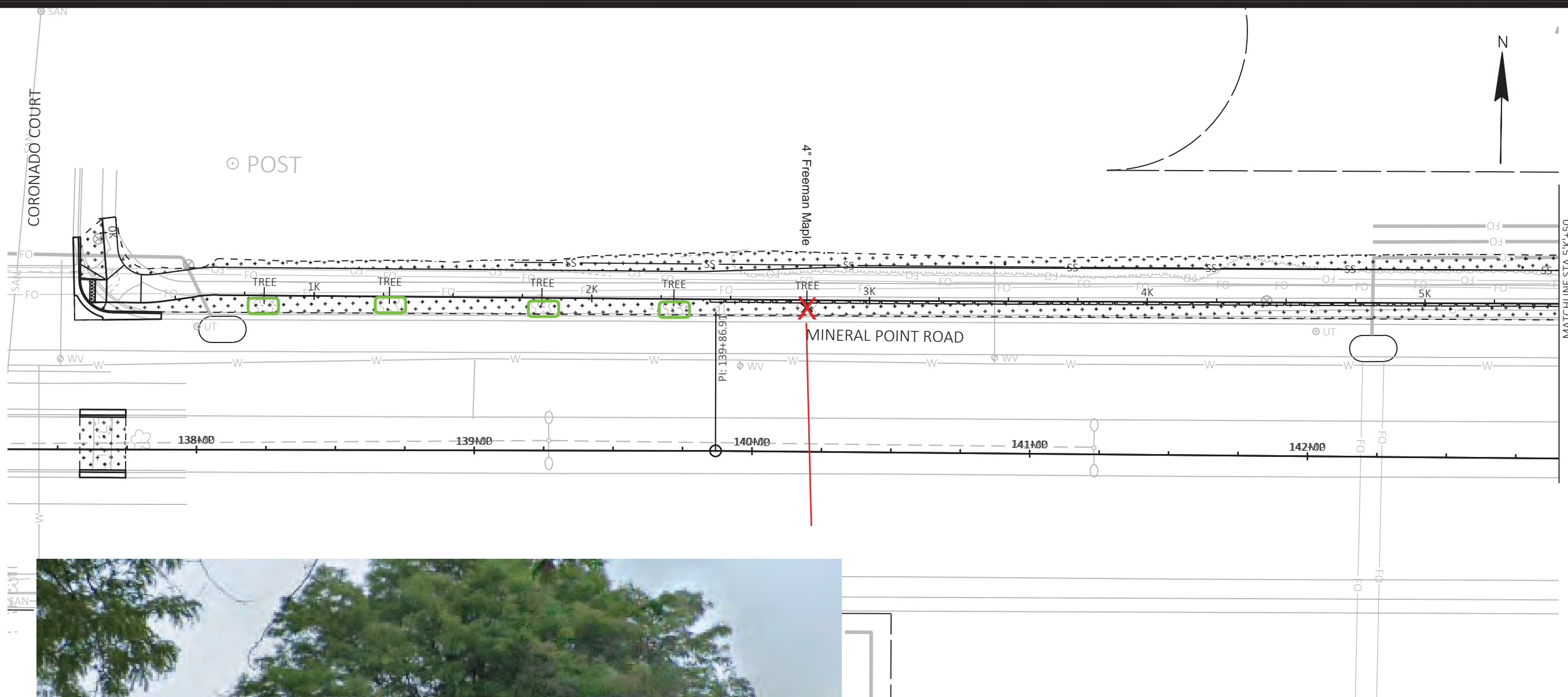
MARK	REVISION	DATE	BY
60631225P	Designed By: AECOM	2023-10-10	Scale: 1 IN:40 FT

60631225P
 CITY OF MADISON, DANE COUNTY, WI
 CONTRACT NO: 60631225C

LANDSCAPING PLAN
 MINERAL POINT ROAD WIDENED SIDEWALK
 CITY OF MADISON



60631225P
 L-16



Trees Preserved



Small Tree Removed

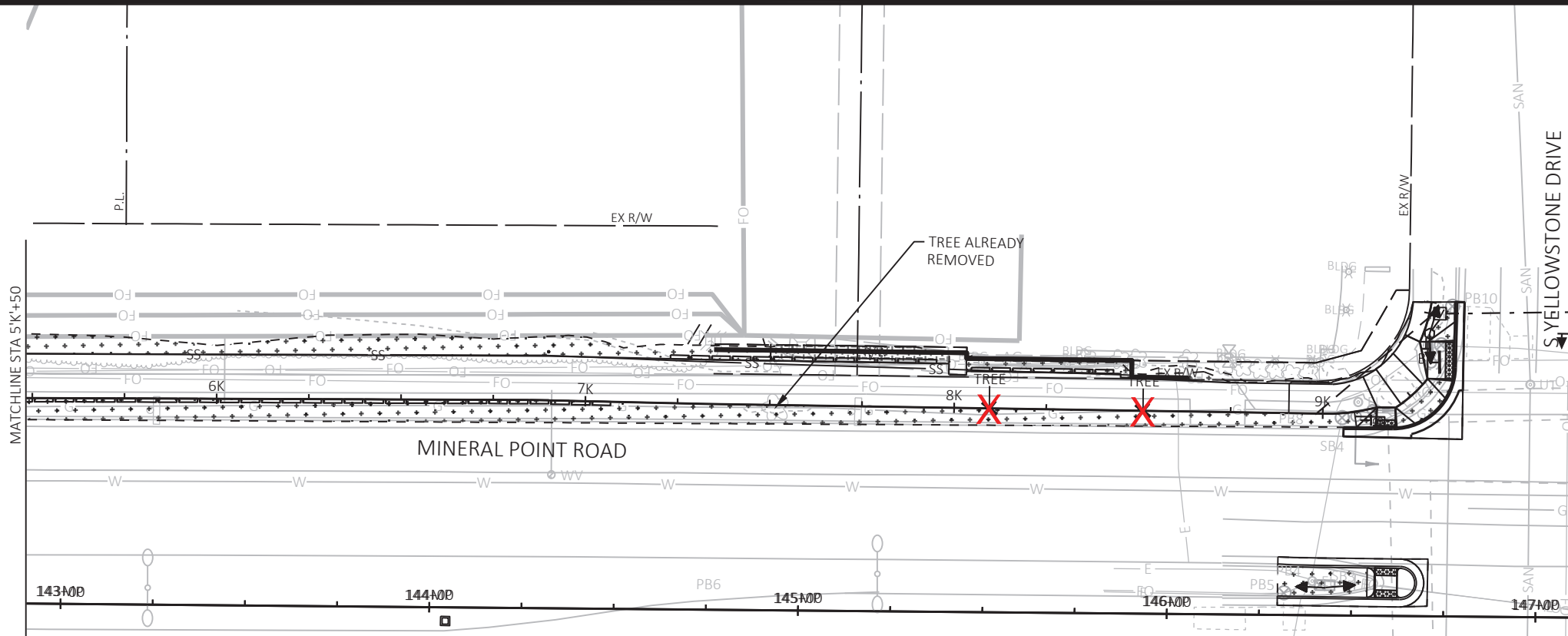
MARK	REVISION	DATE	BY
60631225P	Designed By: AECOM	2023-10-10	

60631225P
 LANDSCAPING PLAN
 MINERAL POINT ROAD WIDENED SIDEWALK
 CITY OF MADISON
 CITY OF MADISON, DANE COUNTY, WI
 CONTRACT NO: 60631225C

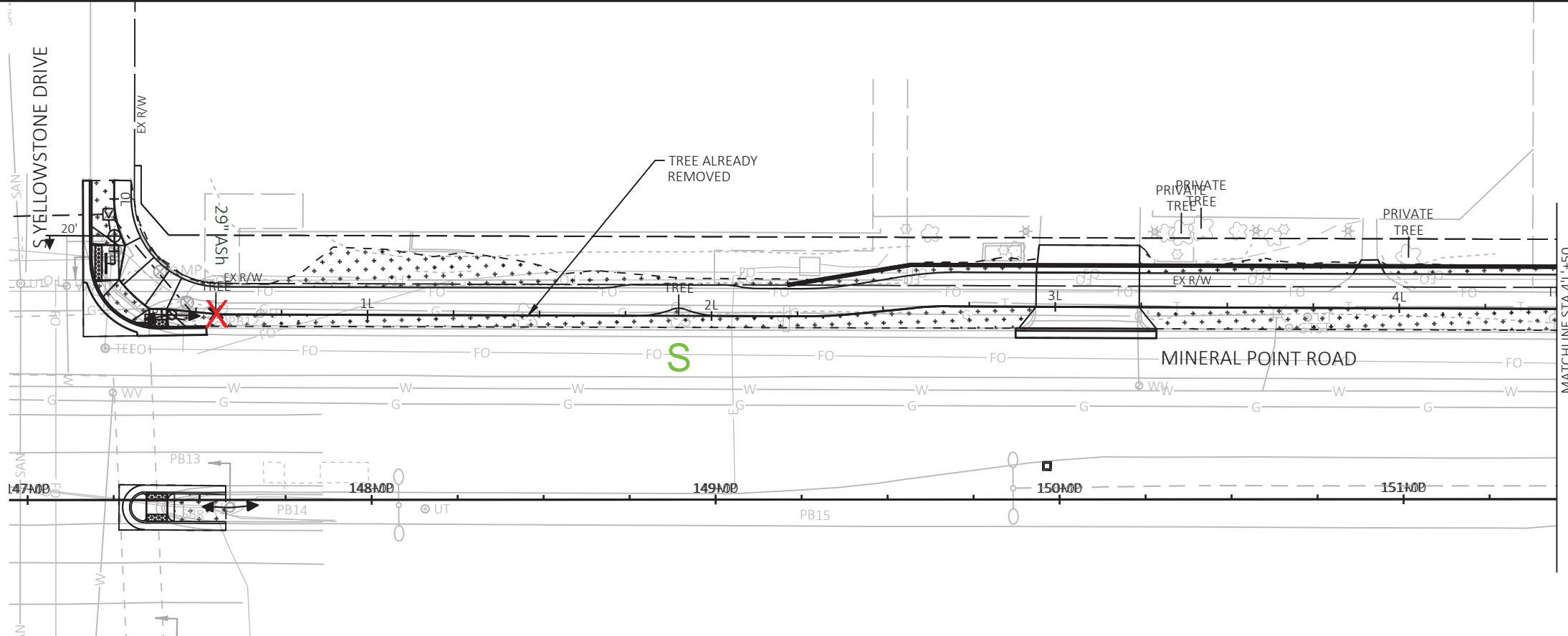


60631225P

L-17



Trees Removed



Most Trees Preserved

MARK	REVISION	DATE	BY

Designed By: AECOM | Date: 2023-10-10
60631225P

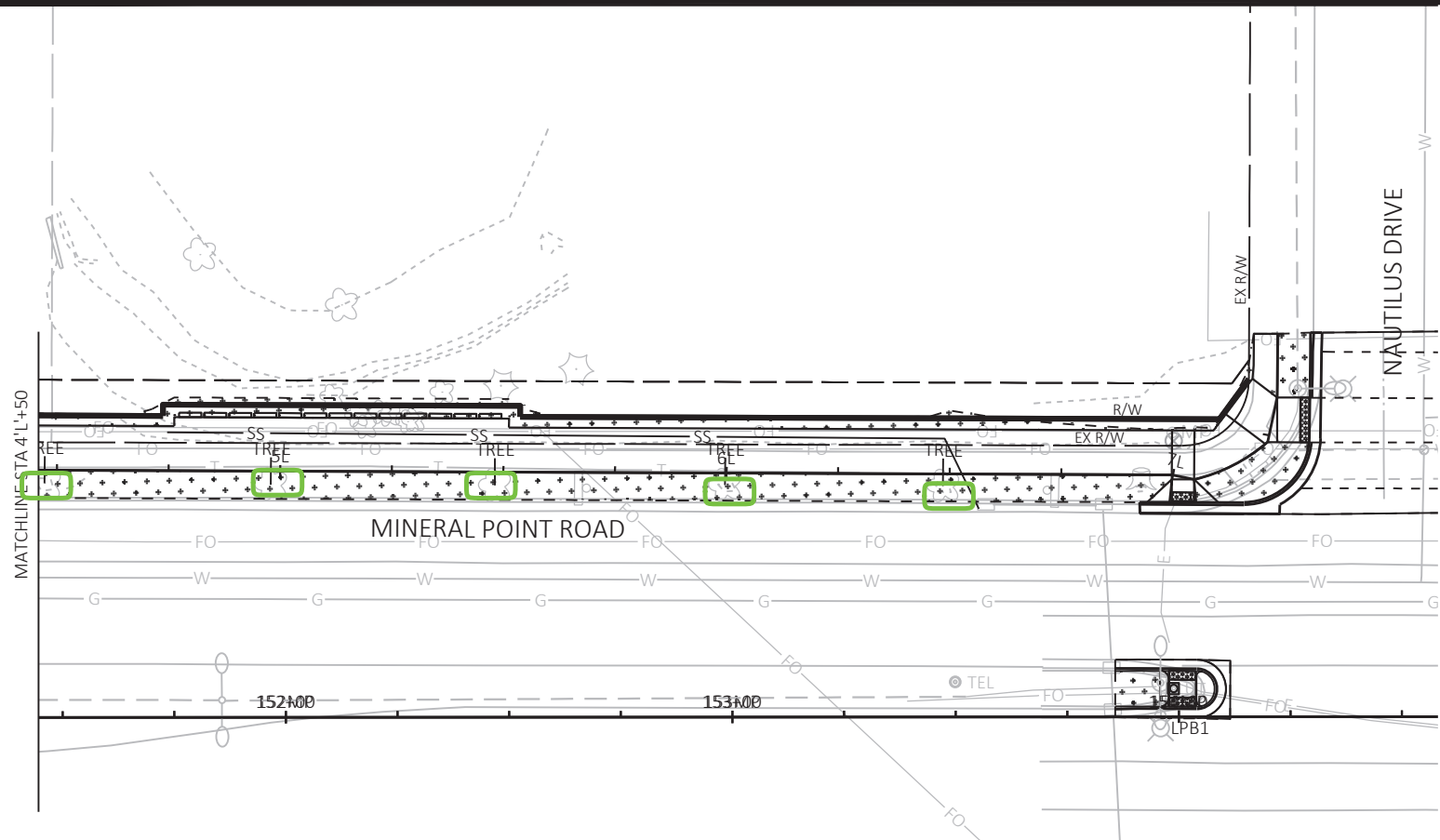
60631225P
CITY OF MADISON, DANE COUNTY, WI
CONTRACT NO: 60631225C

LANDSCAPING PLAN
MINERAL POINT ROAD WIDENED SIDEWALK
CITY OF MADISON



60631225P

L-19



Trees Preserved

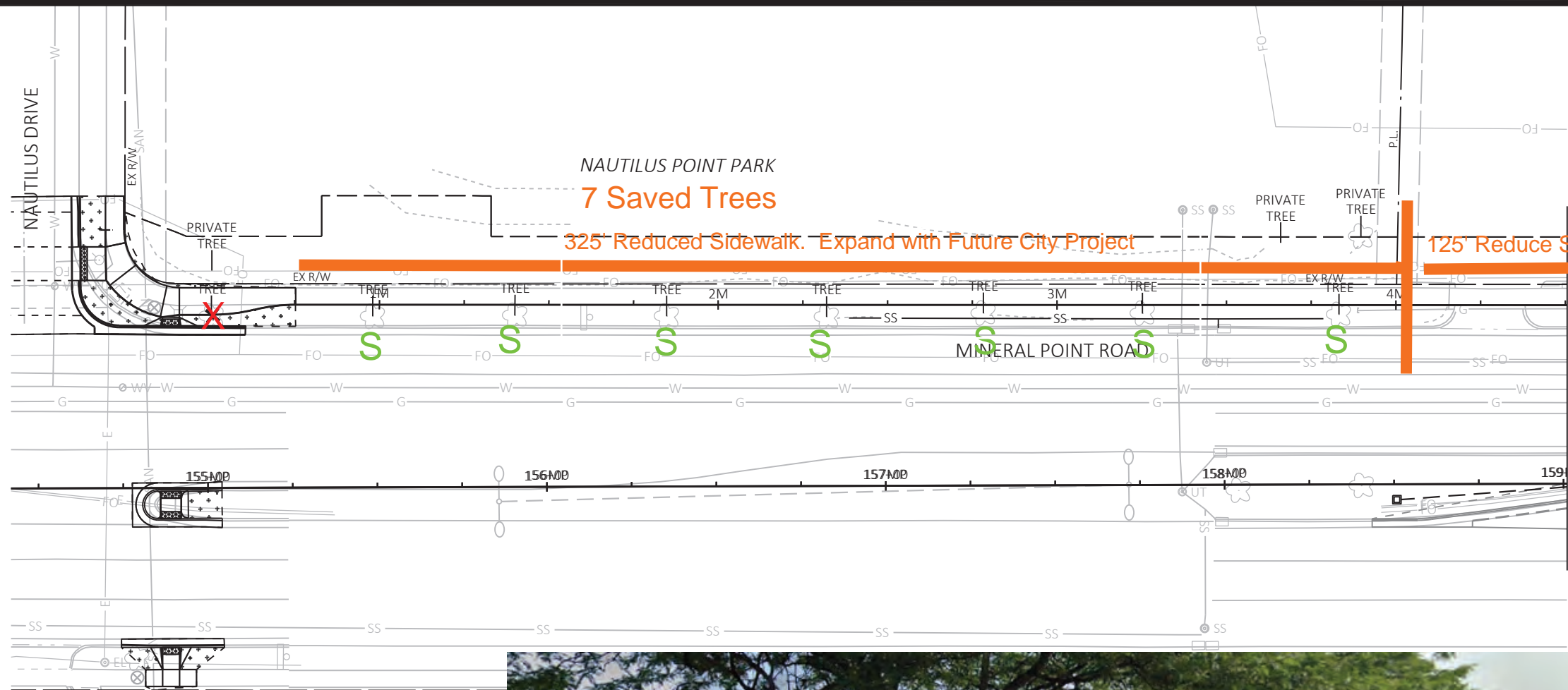
MARK	REVISION	DATE	BY
60631225P	Designed By: AECOM	2023-10-10	

60631225P
 CITY OF MADISON, DANE COUNTY, WI
 CONTRACT NO: 60631225C

LANDSCAPING PLAN
 MINERAL POINT ROAD WIDENED SIDEWALK
 CITY OF MADISON



60631225P
 L-20



Tree Removed



Trees Preserved

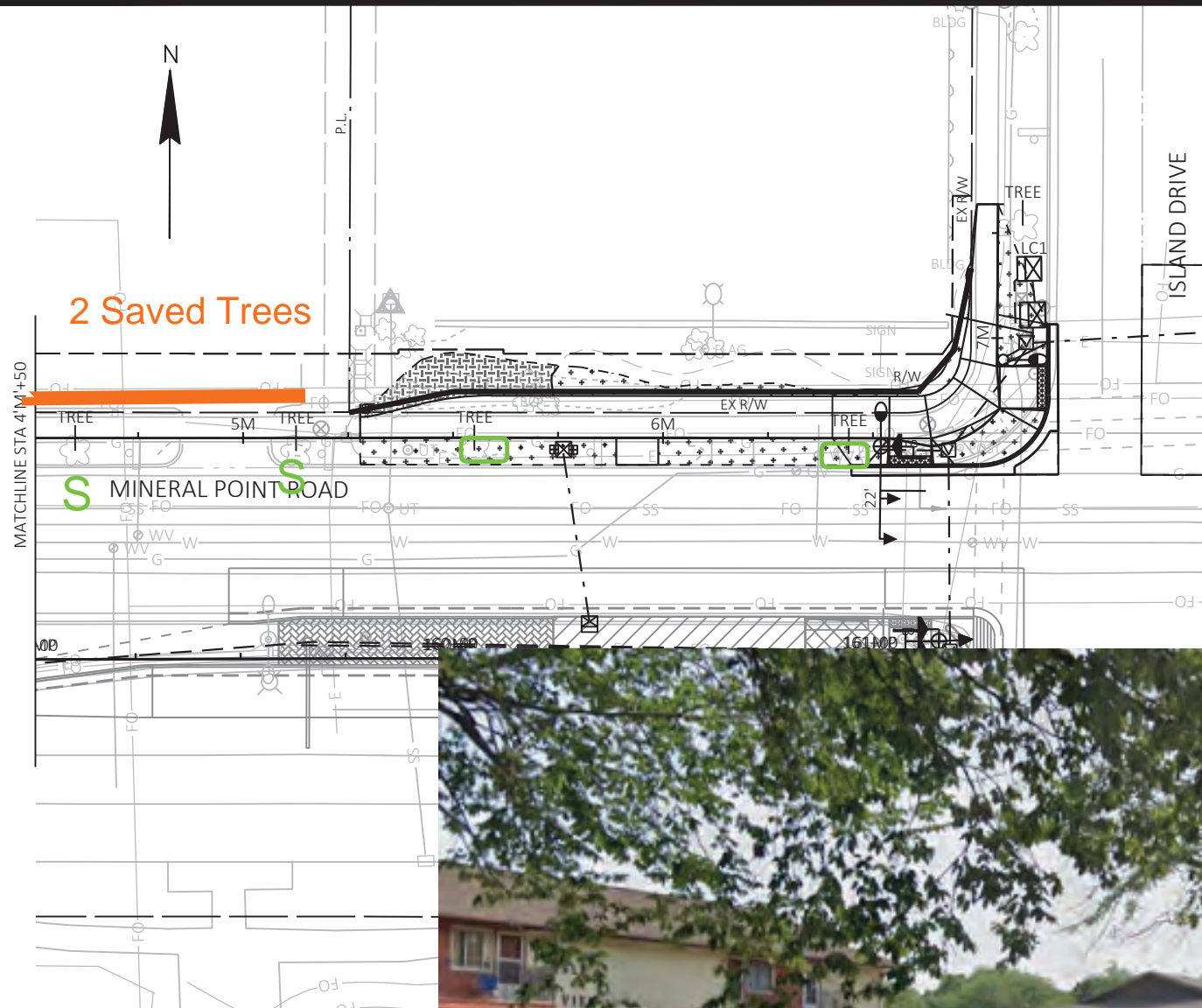
MARK	REVISION	DATE	BY
60631225P	Designed By: AECOM	Date: 2023-10-10	Scale: 1 IN:40 FT

60631225P
 CITY OF MADISON, DANE COUNTY, WI
 CONTRACT NO: 60631225C
 LANDSCAPING PLAN
 MINERAL POINT ROAD WIDENED SIDEWALK
 CITY OF MADISON



60631225P

L-21



Trees Preserved

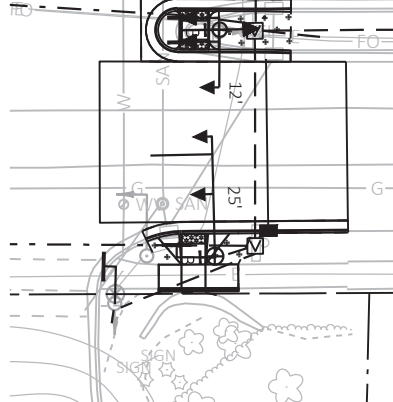
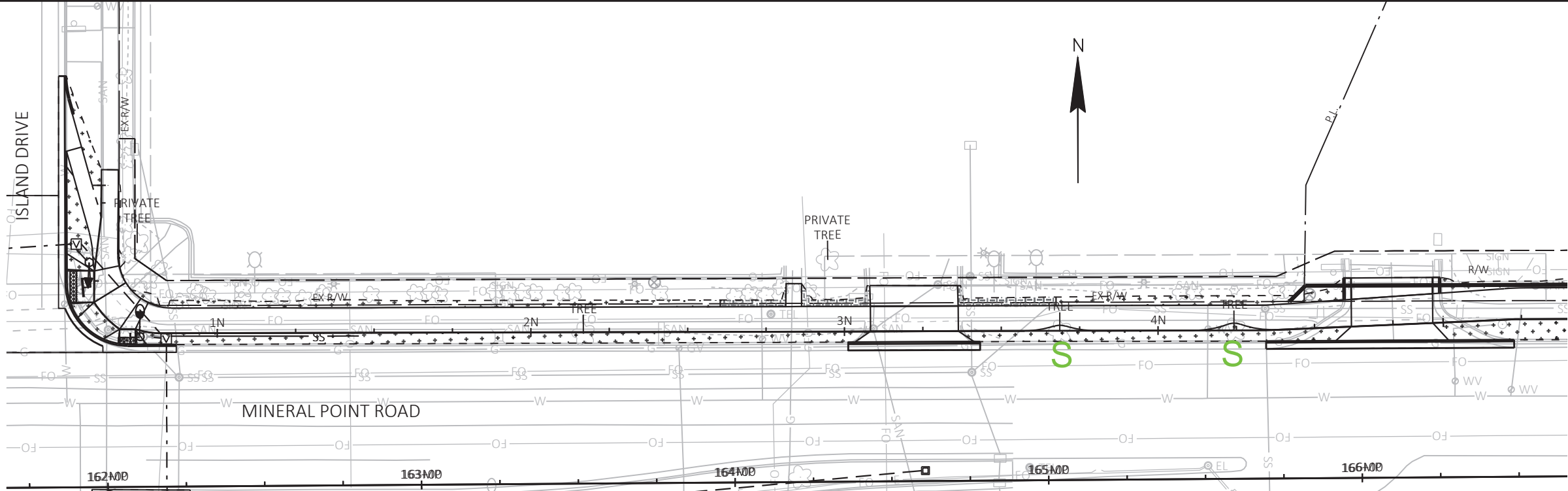
MARK	REVISION	DATE	BY
60631225P	Designed By: AECOM	2023-10-10	

60631225P
 CITY OF MADISON, DANE COUNTY, WI
 CONTRACT NO: 60631225C

LANDSCAPING PLAN
 MINERAL POINT ROAD WIDENED SIDEWALK
 CITY OF MADISON



60631225P
 L-22



Trees Preserved

MARK	REVISION	DATE	BY

Designed By: AECOM | Date: 2023-10-10
60631225P

60631225P

LANDSCAPING PLAN

MINERAL POINT ROAD WIDENED SIDEWALK

CITY OF MADISON

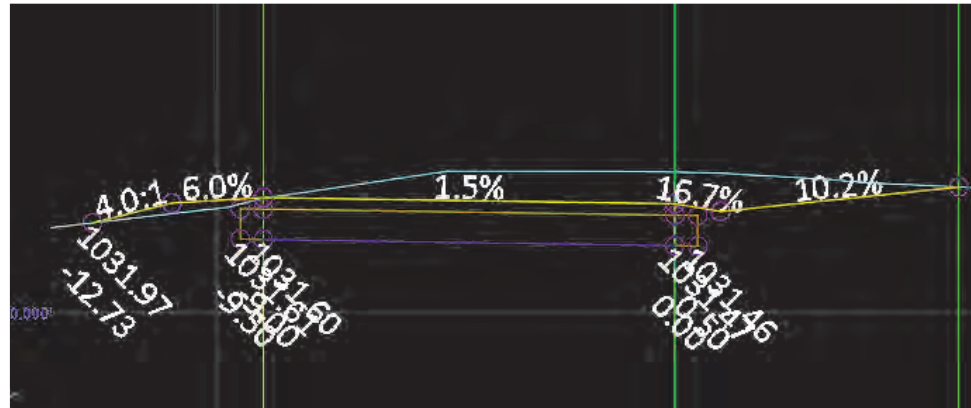
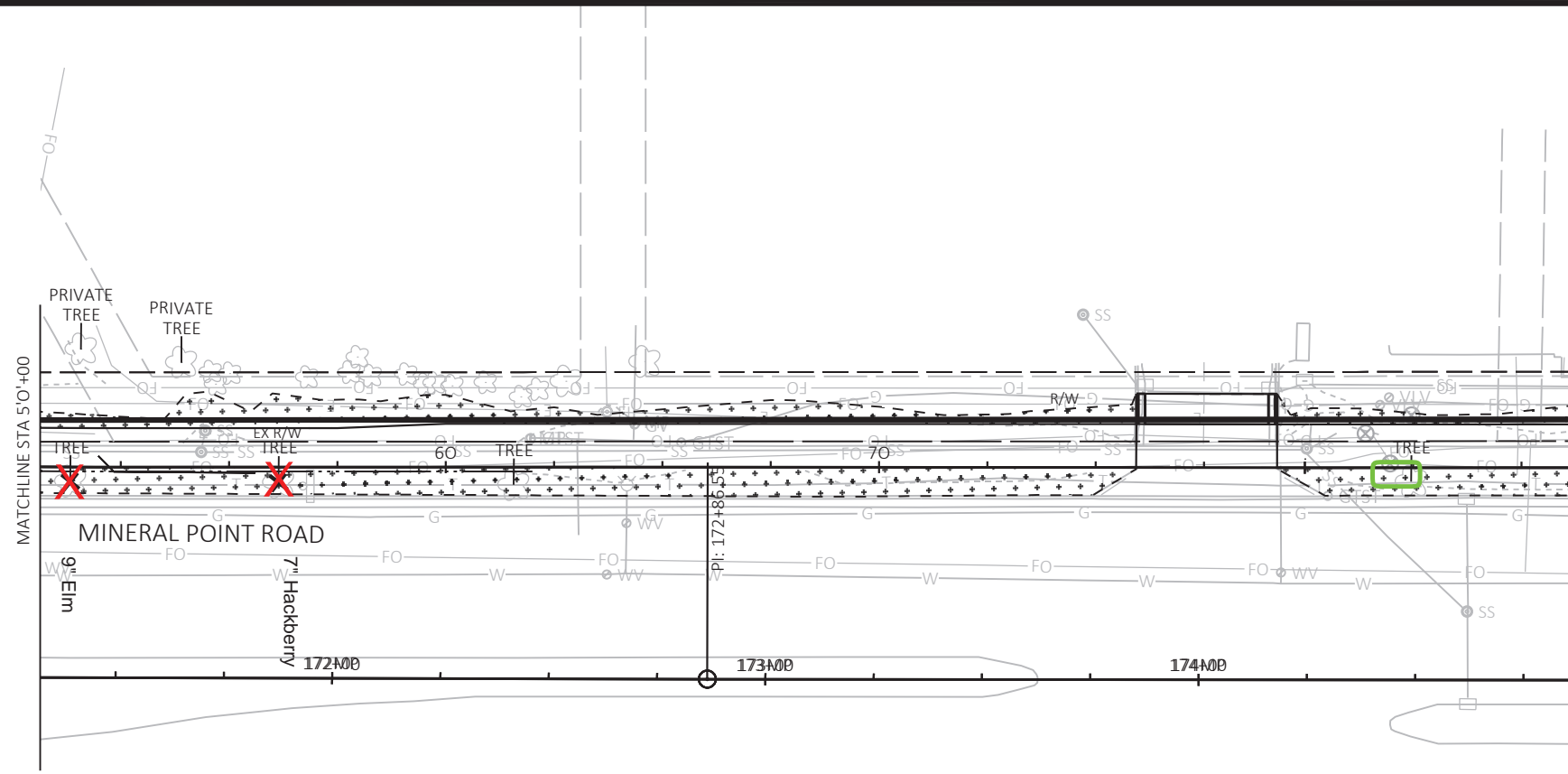
CITY OF MADISON, DANE COUNTY, WI

CONTRACT NO: 60631225C



60631225P

L-23



Trees Removed

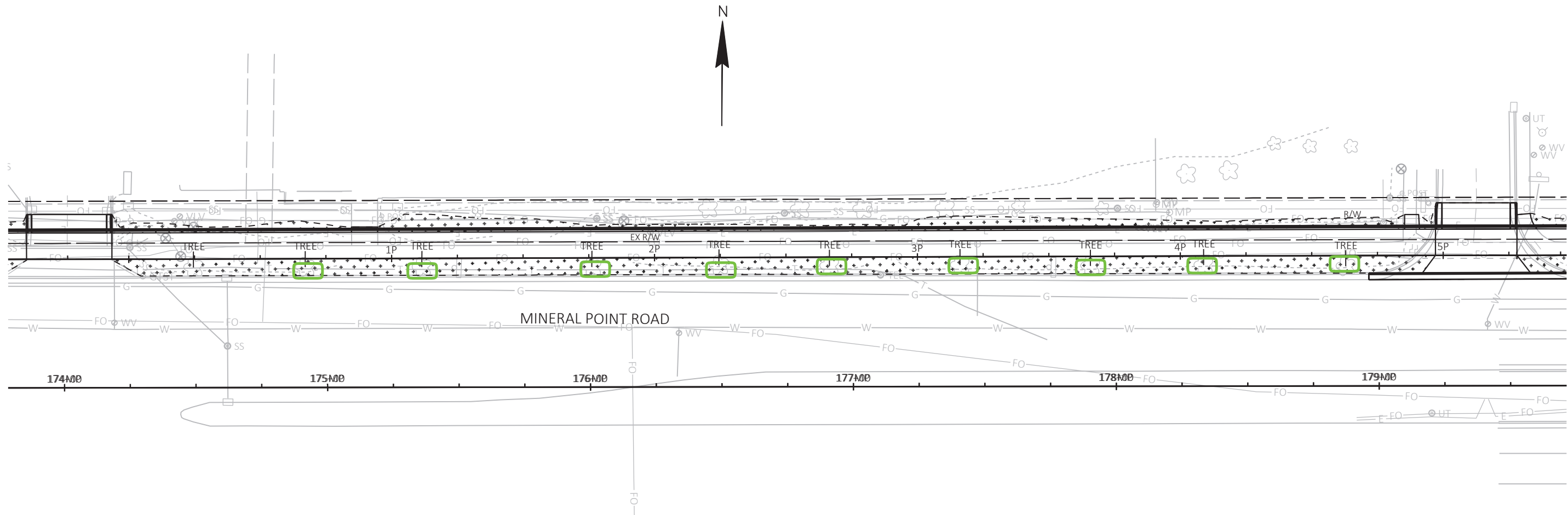
MARK	REVISION	DATE	BY
60631225P	Designed By: AECOM	2023-10-10	Scale: 1 IN=40 FT

60631225P
 LANDSCAPING PLAN
 MINERAL POINT ROAD WIDENED SIDEWALK
 CITY OF MADISON
 CITY OF MADISON, DANE COUNTY, WI
 CONTRACT NO: 60631225C



60631225P

L-25



Trees Preserved



Trees Preserved

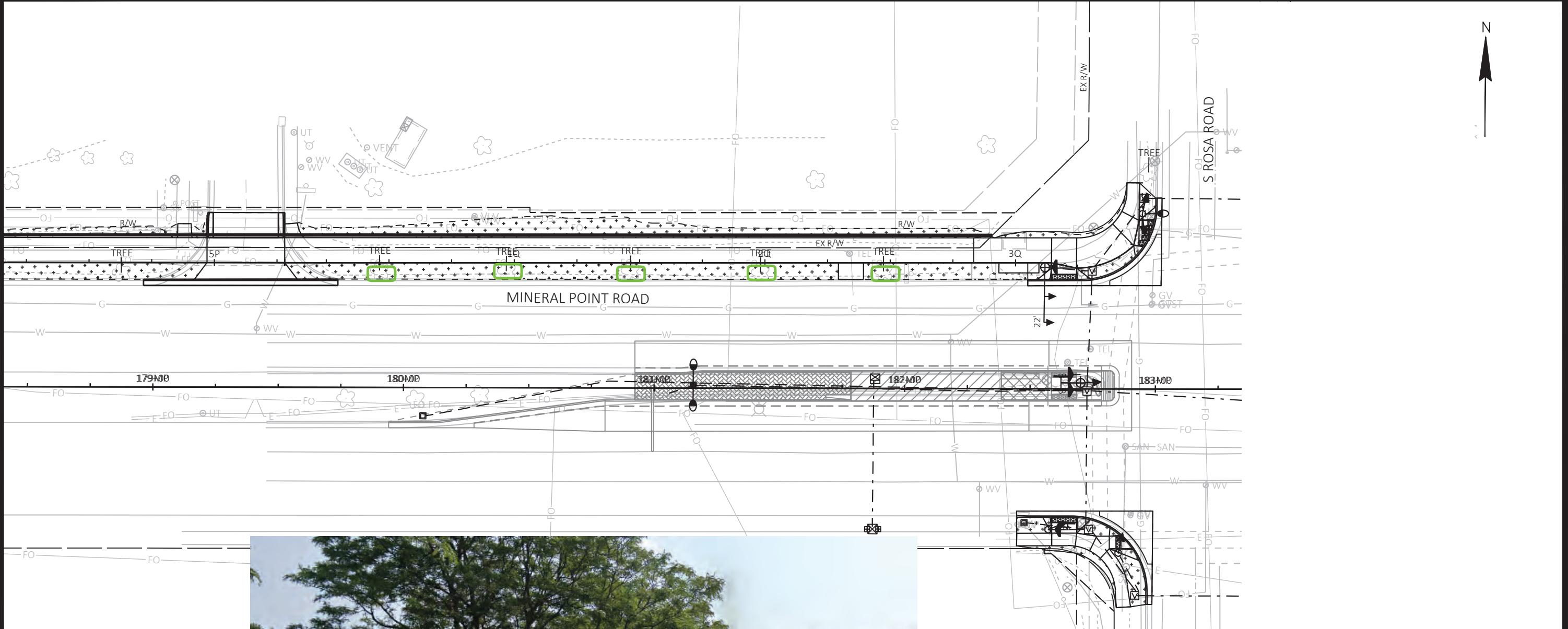
MARK	REVISION	DATE	BY
	Designed By: AECOM	2023-10-10	60631225P
	Scale: 1 IN=40 FT		

60631225P
 CITY OF MADISON, DANE COUNTY, WI
 CONTRACT NO: 60631225C

LANDSCAPING PLAN
 MINERAL POINT ROAD WIDENED SIDEWALK
 CITY OF MADISON



60631225P
 L-26



Trees Preserved

MARK	REVISION	DATE	BY
	Designed By: AECOM	2023-10-10	
	60631225P		

60631225P
 CITY OF MADISON, DANE COUNTY, WI
 CONTRACT NO: 60631225C

LANDSCAPING PLAN
 MINERAL POINT ROAD WIDENED SIDEWALK
 CITY OF MADISON



60631225P

L-27

FILE NAME : C:\P\WORKING\AECOM_DS20_NA_2019\CAMERON.ENTWISTLE@AECOM.COM\DD190957\050102_TREE_EXHIBIT.DWG
 LAST PLOT DATE - 2023-10-10
 LAYOUT NAME - C



Trees Preserved

MARK	REVISION	DATE	BY
	Designed By: AECOM	2023-10-10	
	60631225P		

60631225P
 CITY OF MADISON, DANE COUNTY, WI
 CONTRACT NO: 60631225C

LANDSCAPING PLAN
 MINERAL POINT ROAD WIDENED SIDEWALK
 CITY OF MADISON



60631225P
 L-28

GARNER PARK



Curb Moved to Reduce Impacts

Majority of Trees Preserved

8 trees removed



Curb moved and bus lane eliminated to reduce impacts



Curb moved and bus lane eliminated to reduce impacts

MARK	REVISION	DATE	BY
	Designed By: AECOM	Date: 2023-10-10	60631225P
	Scale: 1 IN=40 FT		

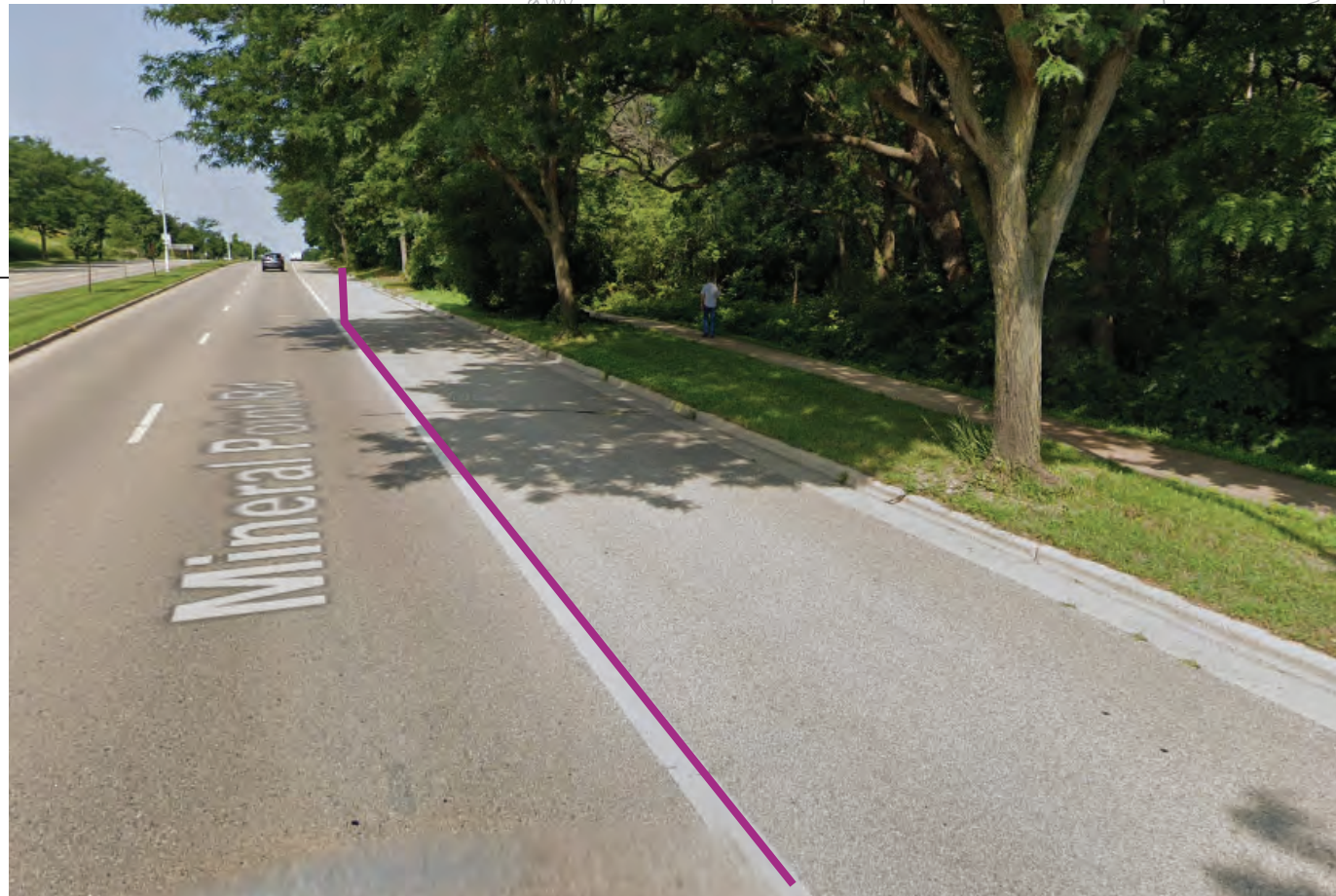
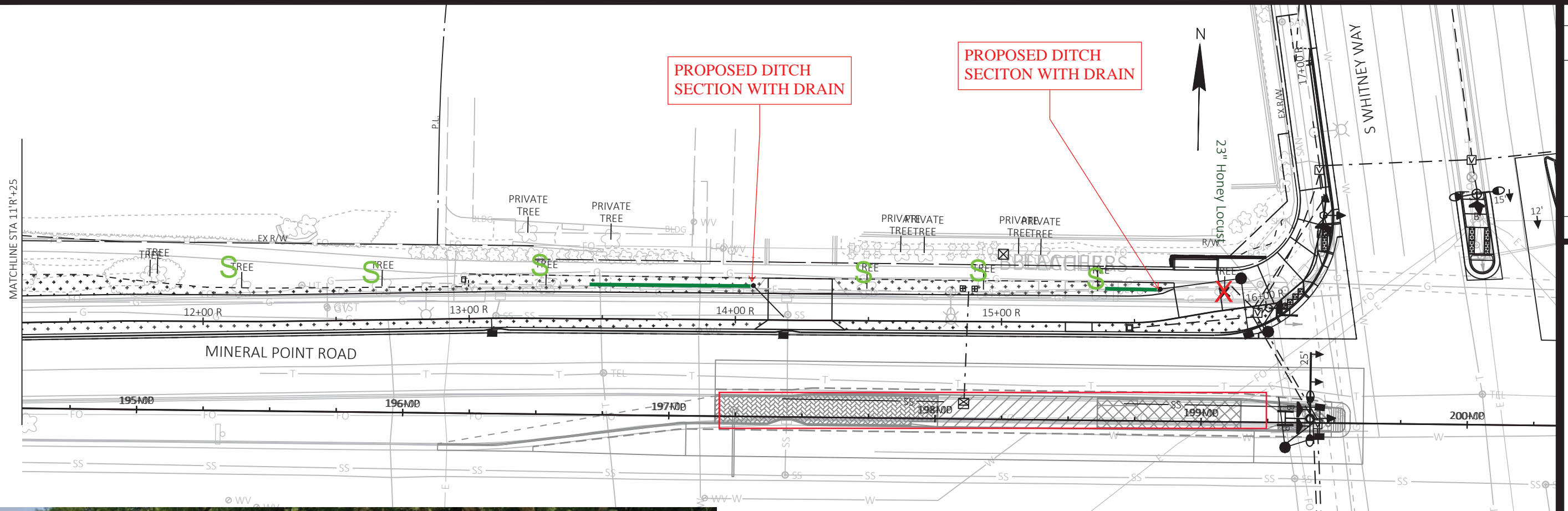
60631225P
 CITY OF MADISON, DANE COUNTY, WI
 CONTRACT NO: 60631225C

LANDSCAPING PLAN
 MINERAL POINT ROAD WIDENED SIDEWALK
 CITY OF MADISON



60631225P

L-29



Most Trees Preserved

Curb moved and bus lane eliminated to reduce impacts



Most Trees Preserved

Curb moved and bus lane eliminated to reduce impacts

MARK	REVISION	DATE	BY
Designed By: AECOM	Date: 2023-10-10	Scale: 1 IN:40 FT	60631225P
60631225P			
CITY OF MADISON, DANE COUNTY, WI			
LANDSCAPING PLAN			
MINERAL POINT ROAD WIDENED SIDEWALK			
CITY OF MADISON			
60631225P			
L-30			