

**PROJECT OVERVIEW LEGEND**

- PROPOSED SIGNALIZED INTERSECTION
- PLATFORM AREA
- Complete by 5/31/24
- Start in 2024
- Start after 4/1/24

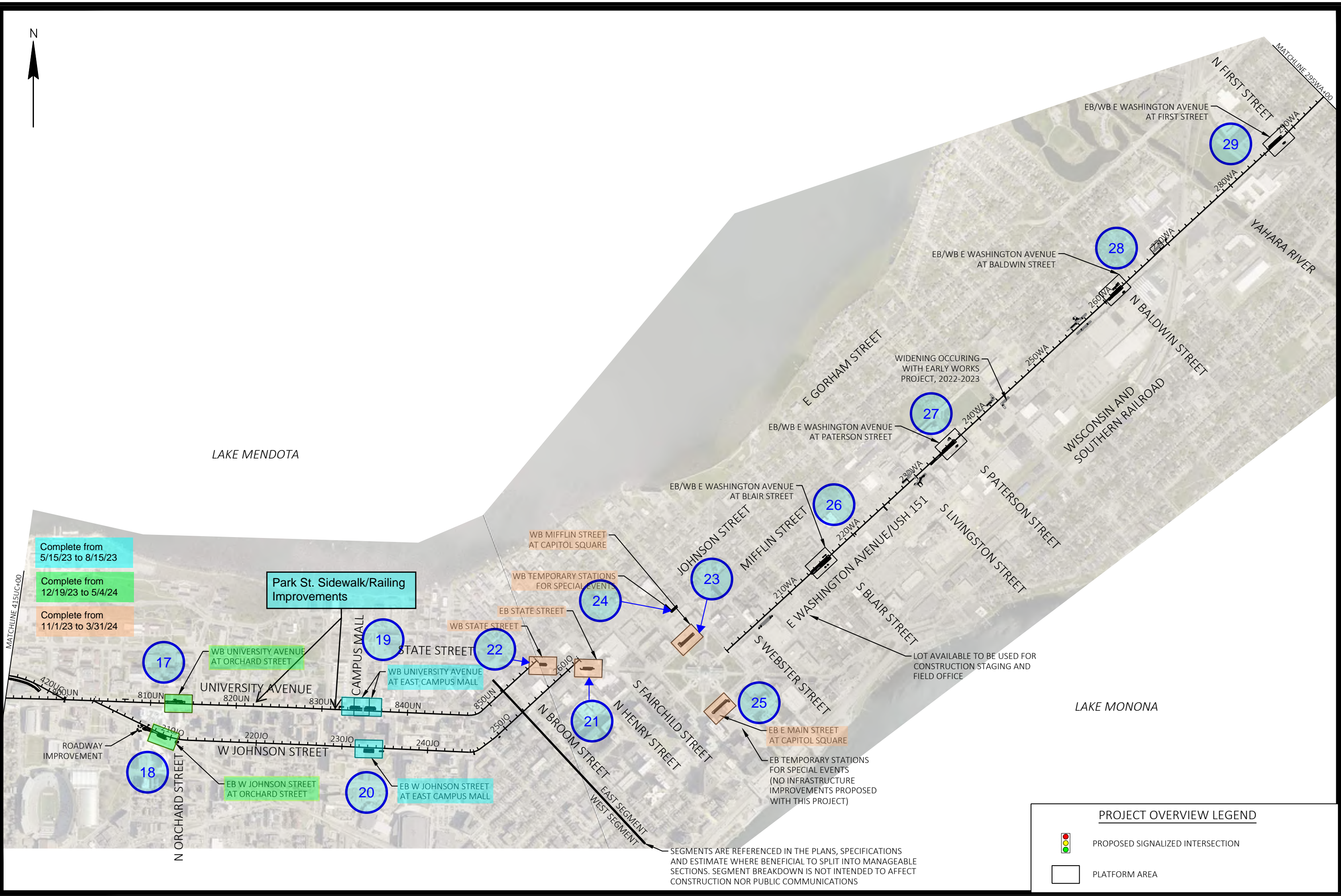
MARK	REVISION	DATE	BY

Designed By: AECOM | Date: 2022-10-04  
 Scale: 1 IN=1000 FT  
 60631225P

**PROJECT OVERVIEW**  
**BUS RAPID TRANSIT**  
**CITY OF MADISON**

60631225P  
 CITY OF MADISON, DANE COUNTY, WI  
 CONTRACT NO: 60631225C

60631225P  
 0-1



- Complete from 5/15/23 to 8/15/23
- Complete from 12/19/23 to 5/4/24
- Complete from 11/1/23 to 3/31/24

**Park St. Sidewalk/Railing Improvements**

**PROJECT OVERVIEW LEGEND**

- PROPOSED SIGNALIZED INTERSECTION
- PLATFORM AREA

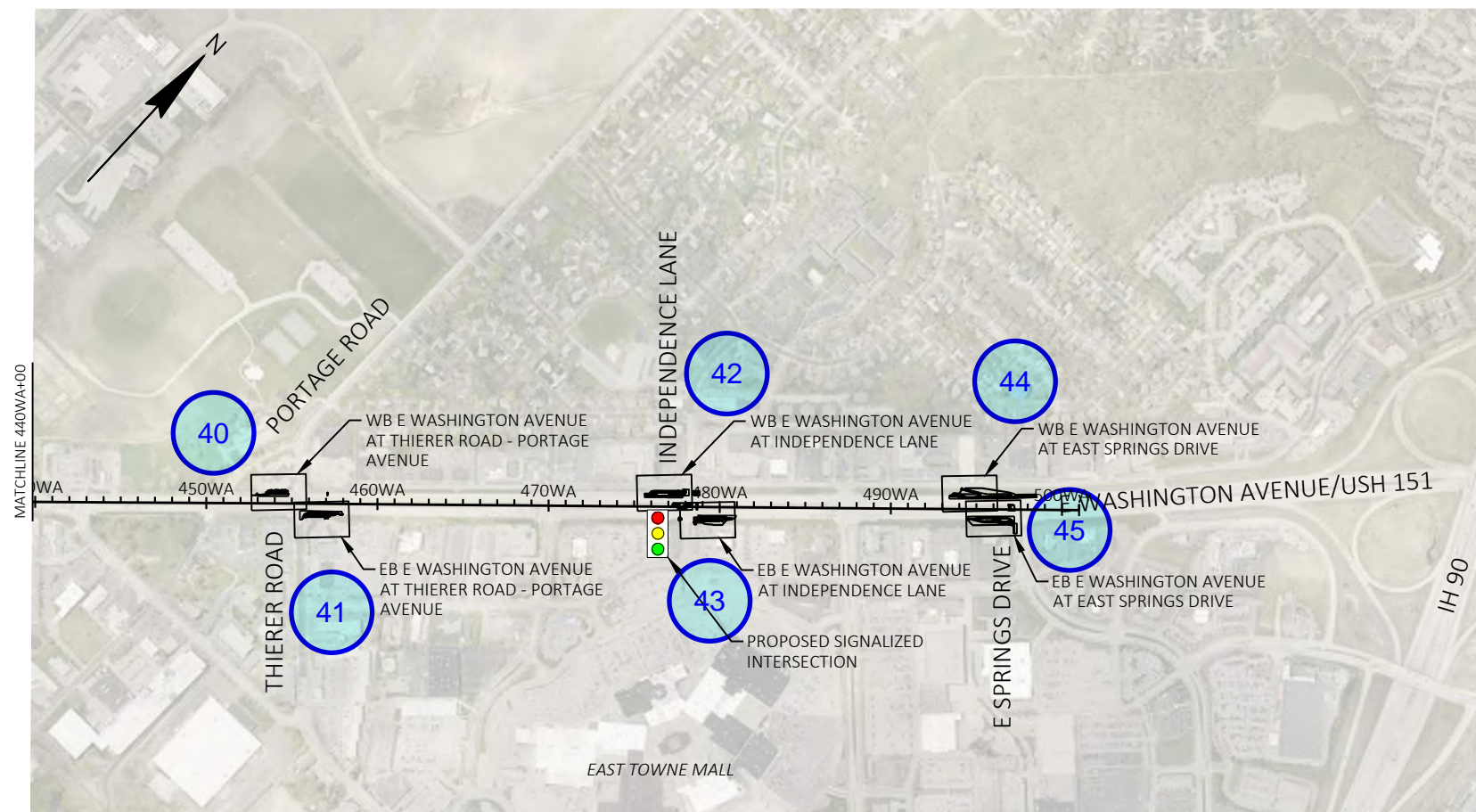
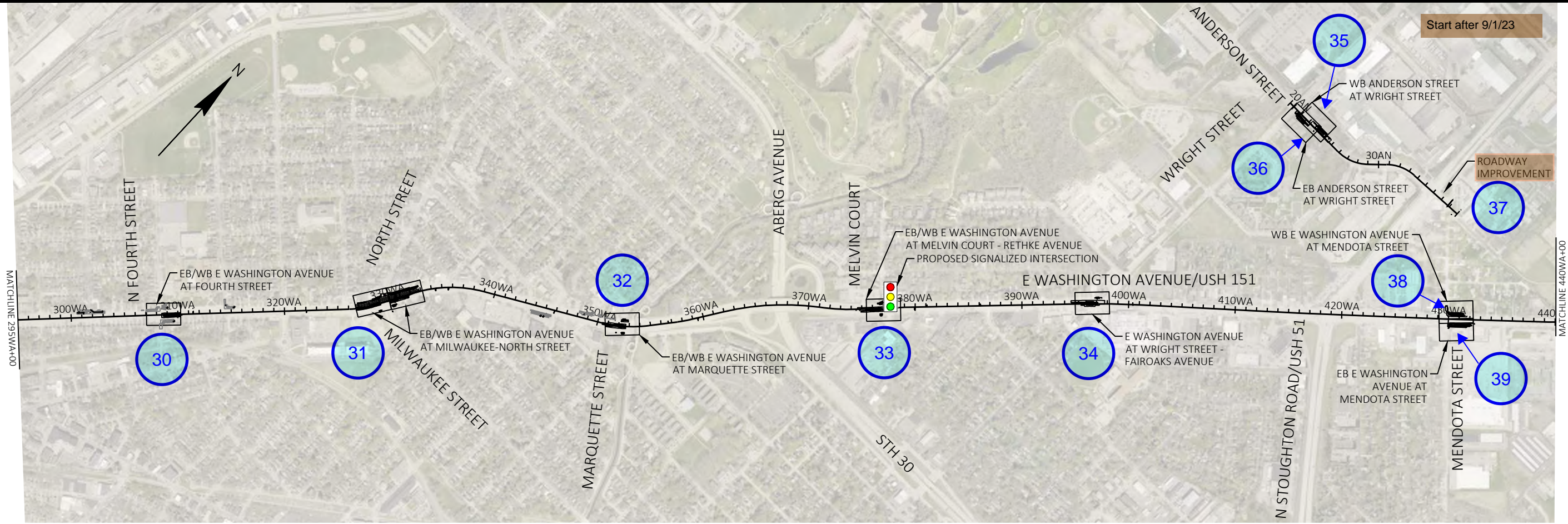
SEGMENTS ARE REFERENCED IN THE PLANS, SPECIFICATIONS AND ESTIMATE WHERE BENEFICIAL TO SPLIT INTO MANAGEABLE SECTIONS. SEGMENT BREAKDOWN IS NOT INTENDED TO AFFECT CONSTRUCTION NOR PUBLIC COMMUNICATIONS

MARK	REVISION	DATE	BY

60631225P  
 CITY OF MADISON, DANE COUNTY, WI  
 CONTRACT NO: 60631225C



**PROJECT OVERVIEW**  
**BUS RAPID TRANSIT**  
**CITY OF MADISON**

60631225P  
 0-2



NOTE:  
 EXTENSION TO SUN PRAIRIE PARK AND RIDE  
 (O'KEEFE AVENUE & REINER ROAD)  
 AND METRO SATELLITE MAINTENANCE FACILITY  
 (3901 HANSON ROAD)  
 SEE NEXT SHEET

**PROJECT OVERVIEW LEGEND**

-  PROPOSED SIGNALIZED INTERSECTION
-  PLATFORM AREA

MARK	REVISION	DATE	BY

Designed By: AECOM/Date: 2022-09-30  
 Scale: 1 IN=1000 FT  
 60631225P

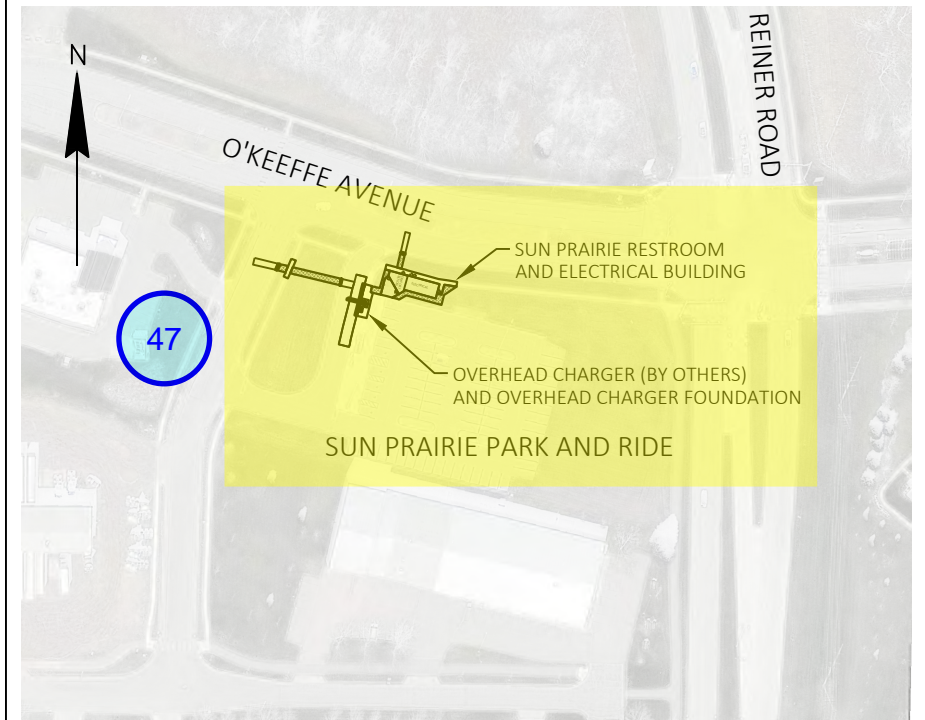
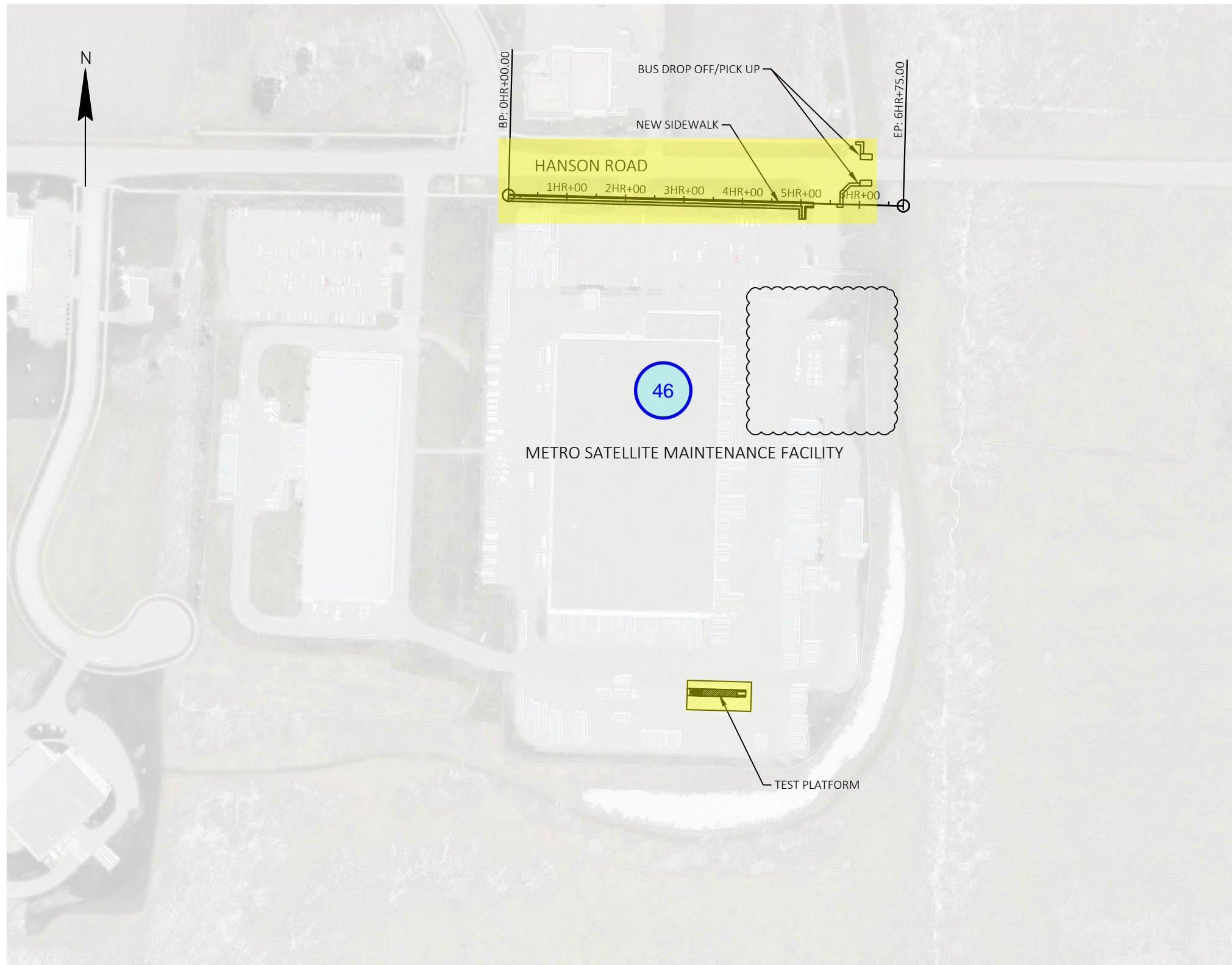
60631225P  
 CITY OF MADISON, DANE COUNTY, WI  
 CONTRACT NO: 60631225C

PROJECT OVERVIEW  
 BUS RAPID TRANSIT  
**CITY OF MADISON**



60631225P

0-3



Complete by 5/31/24

MARK	ADDENDUM 3	11/07/22 MEM
DESIGNED BY: AECOM	REVISION	DATE
60631225P	2022-11-07	BY
		Scale: 1 IN=200 FT

60631225P

CITY OF MADISON, DANE COUNTY, WI

CONTRACT NO: 60631225C

PROJECT OVERVIEW

BUS RAPID TRANSIT

CITY OF MADISON



60631225P