



# East-West Bus Rapid Transit

**Mineral Point Road Widened Sidewalk**

**April 25, 2023**

# Introductions

---

- Graham Carey – BRT program manager
- Mike Cechvala – BRT deputy project manager, City of Madison
- Jenny Frese SR/WA – City of Madison Real Estate

MadisonBRT.com

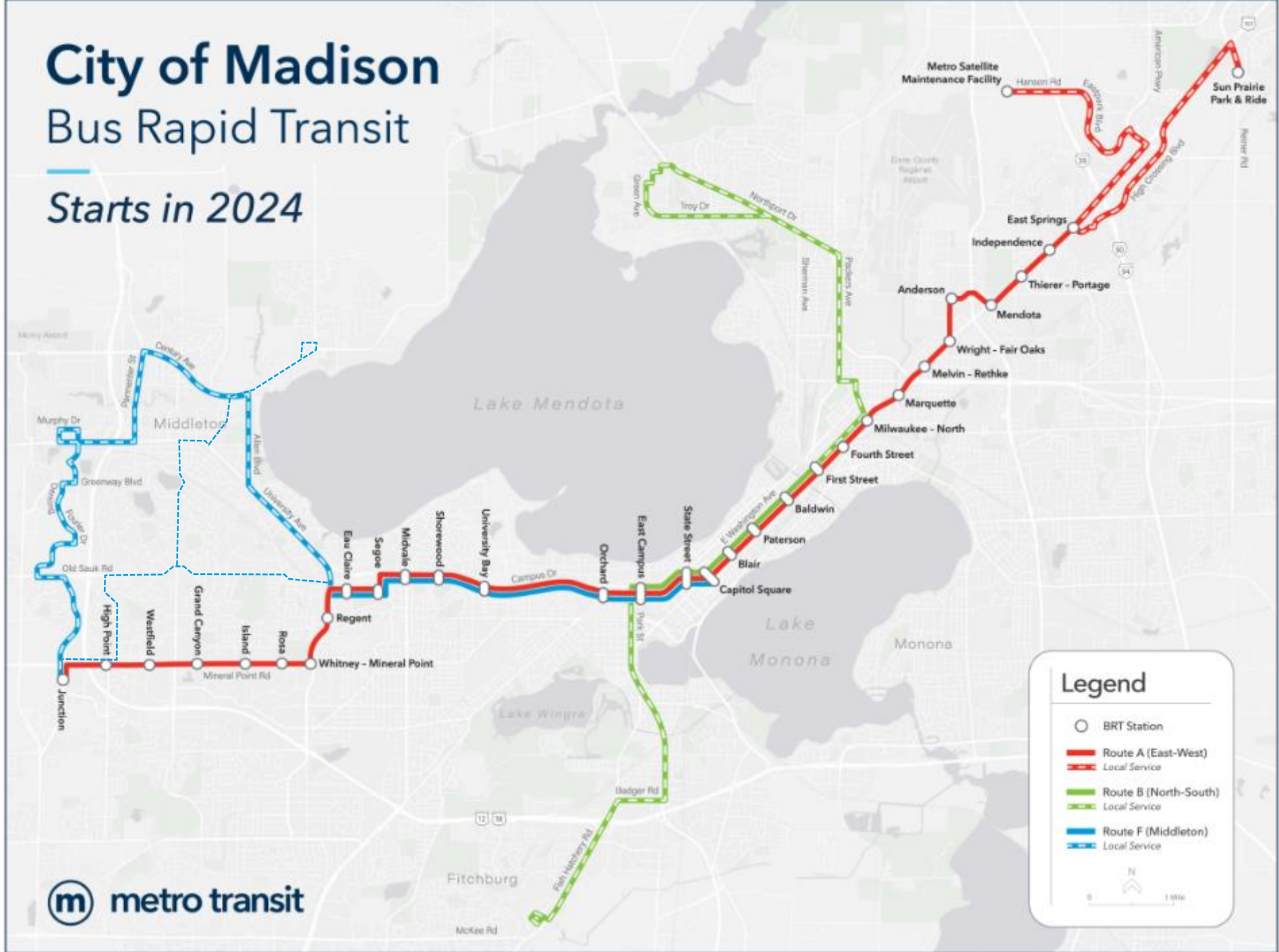
# About Bus Rapid Transit

- Direct routes and fewer stops
- Frequent, all-day service
- Bus-only lanes
- Branded stations & buses
- Transit signal priority
- Articulated electric buses
- Faster fare payment

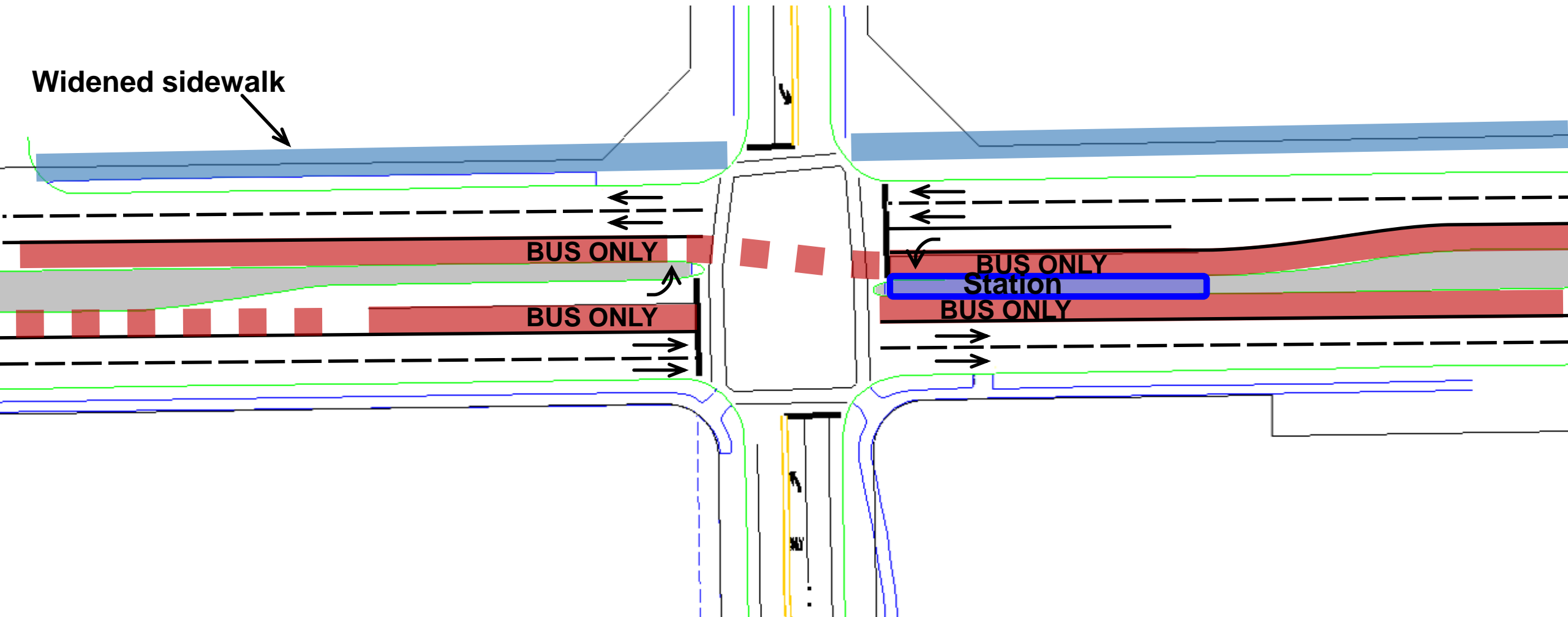


# City of Madison Bus Rapid Transit

Starts in 2024



# Mineral Point Road



LANE  
BUSES  
BICYCLES  
AND  
RIGHT TURNS  
ONLY



WALK  
AHEAD

HANDLING  
FREE  
PREMIUM

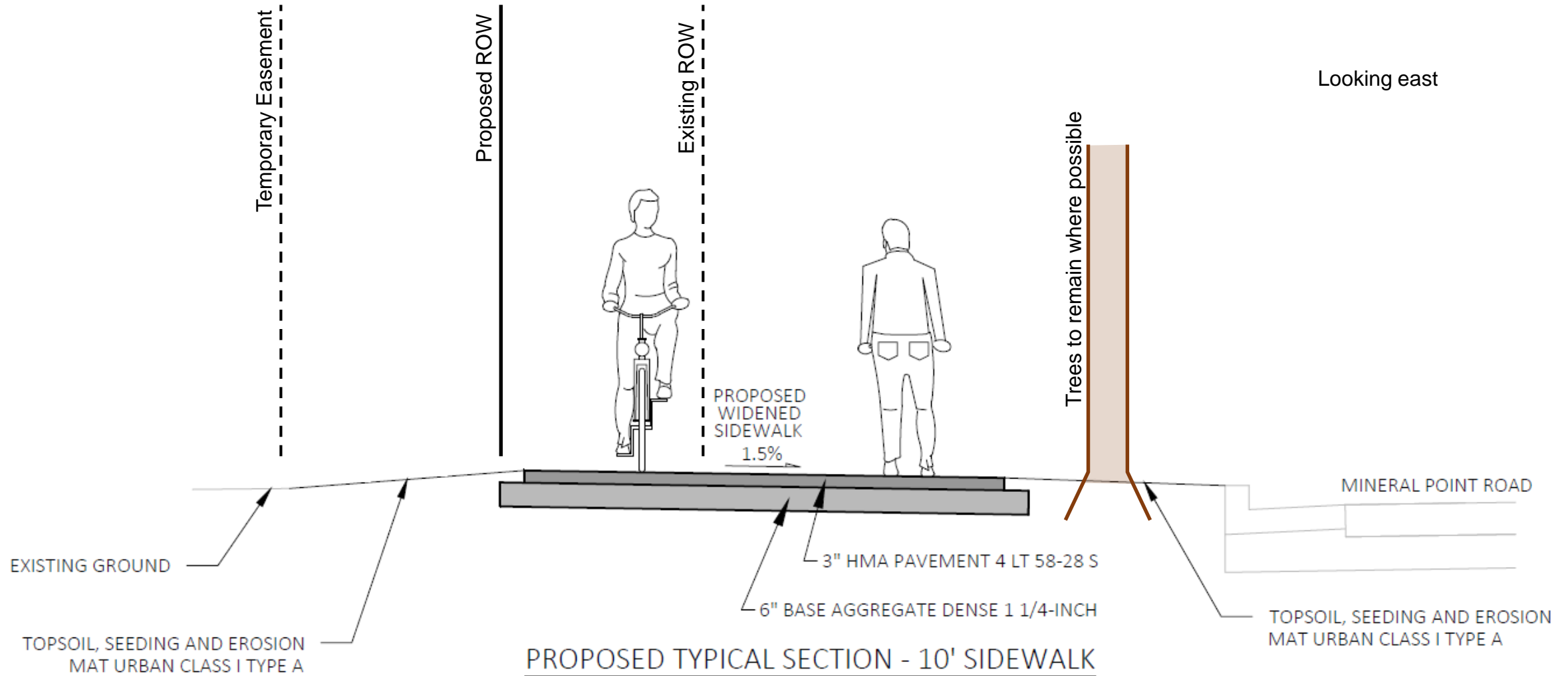
Vandal Park

# General Intent

---

- Widen the north sidewalk to accommodate bikes and other users
- Minimize impacts to trees, properties, and other assets
- Restore areas affected in a like manner
- Repair any public infrastructure and improve crossings while the opportunity exists

# Mineral Point Road Typical Section





# Overall timeline

---

- Main BRT construction began March 2023.
- Mineral Point widened sidewalk spring to summer 2024.
- Most BRT construction complete in summer 2024.
- Open for service in late 2024.

# Overall timeline

---

- Main BRT construction began March 2023.
- Mineral Point widened sidewalk spring to summer 2024.
- Most BRT construction complete in summer 2024.
- Open for service in late 2024.

# Property acquisition process

Jenny Frese SR/WA

[jfrese@cityofmadison.com](mailto:jfrese@cityofmadison.com)

608-267-8719

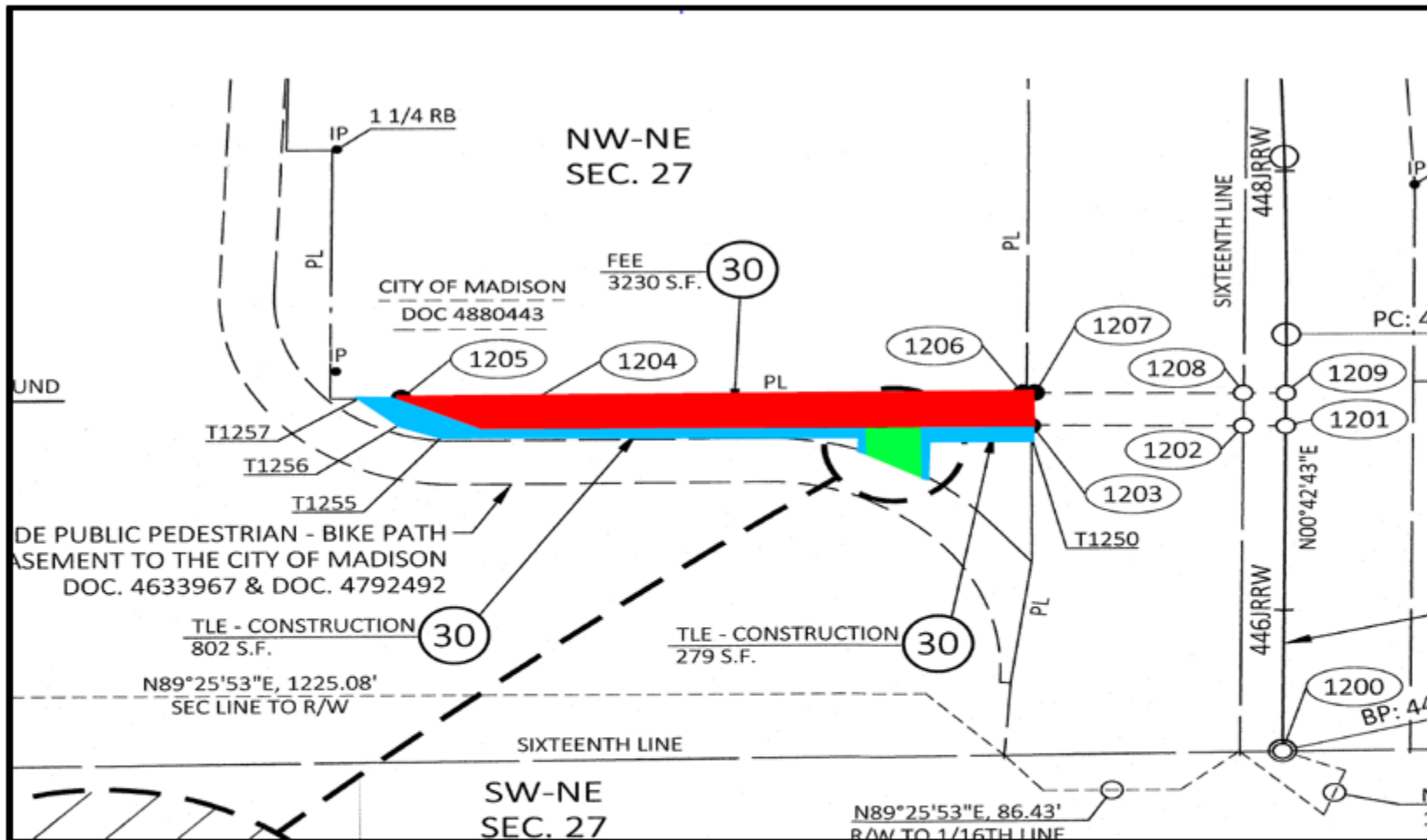
## **The Rights of Landowners Under Wisconsin Eminent Domain Law**



## **Procedures Under Wis. Stat. § 32.05: Highways, Streets, Storm & Sanitary Sewers, Watercourses, Alleys, Airports and Mass Transit Facilities**

---

This brochure provides information on the condemnation process in Wisconsin, including the rights of impacted property owners. More detailed information is available in Wis. Stat. Ch. 32.



**LEGEND**

FEE SIMPLE LAND = RED

PERMANENT LIMITED EASEMENT = GREEN

TEMPORARY LIMITED EASEMENT = BLUE



# East-West Bus Rapid Transit

**Mineral Point Road Widened Sidewalk**

**April 25, 2023**

**[www.MadisonBRT.com](http://www.MadisonBRT.com)**

**[BRTConstruction@cityofmadison.com](mailto:BRTConstruction@cityofmadison.com)**