

2020 Women+ Leadership Series

Growing a New Type of Leader

Heather Stouder
Planning Division Director



Leadership =

Vision

Adaptability

Communication

Trust



Portland, OR 1998-2001



Madison 2001-2004



Indianapolis

2004-2006



Madison

2006-2020

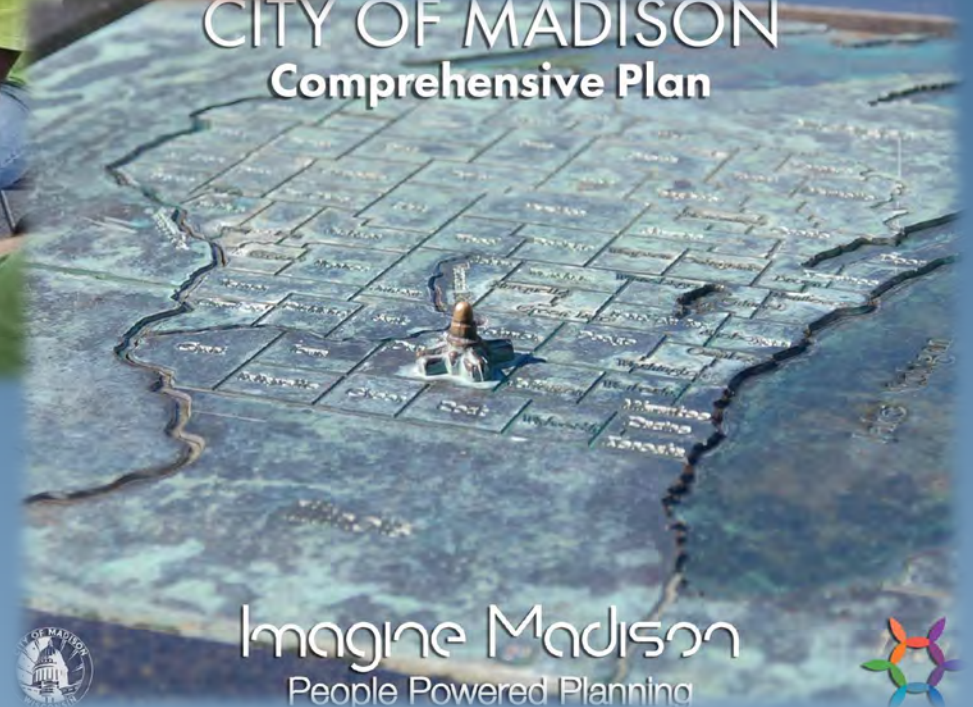








CITY OF MADISON Comprehensive Plan



Imagine Madison
People Powered Planning



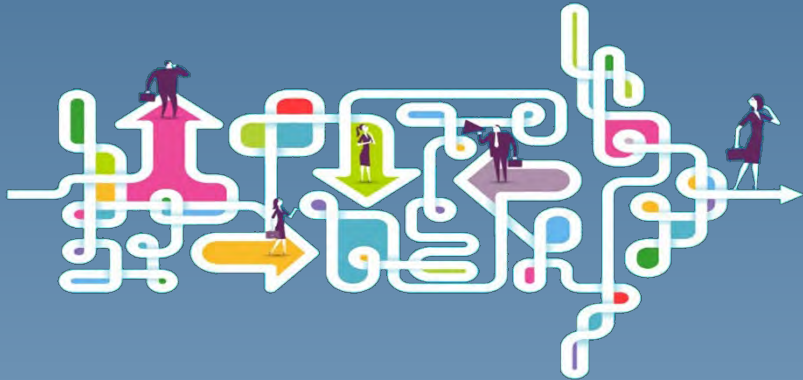


Takeaways

Seek Growth/
Transferable Skills

Create Balance

Embrace Opportunities
to Lead Change





2020 Women+ Leadership Series
Growing a New Type of Leader

Thank you!