

**Board of Park
Commissioners**

**Parks Superintendent
(21/20)**

**Madison Parks
Foundation**

**Assistant Parks
Superintendent
(18/16)**

**Assistant Parks
Superintendent
(18/16)**

**PLANNING AND
DEVELOPMENT**

A

**FINANCE AND
ADMINISTRATION**

B

**PUBLIC INFORMATION
OFFICE**

C

COMMUNITY SERVICES

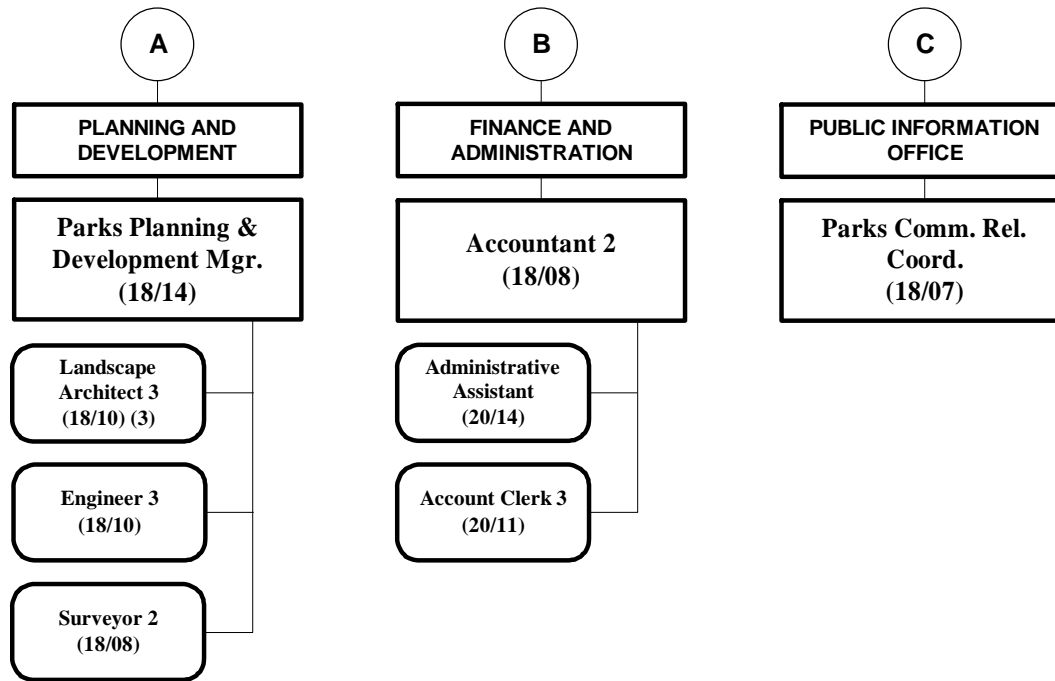
D

OPERATIONS

E

**OLBRICH BOTANICAL
GARDENS**

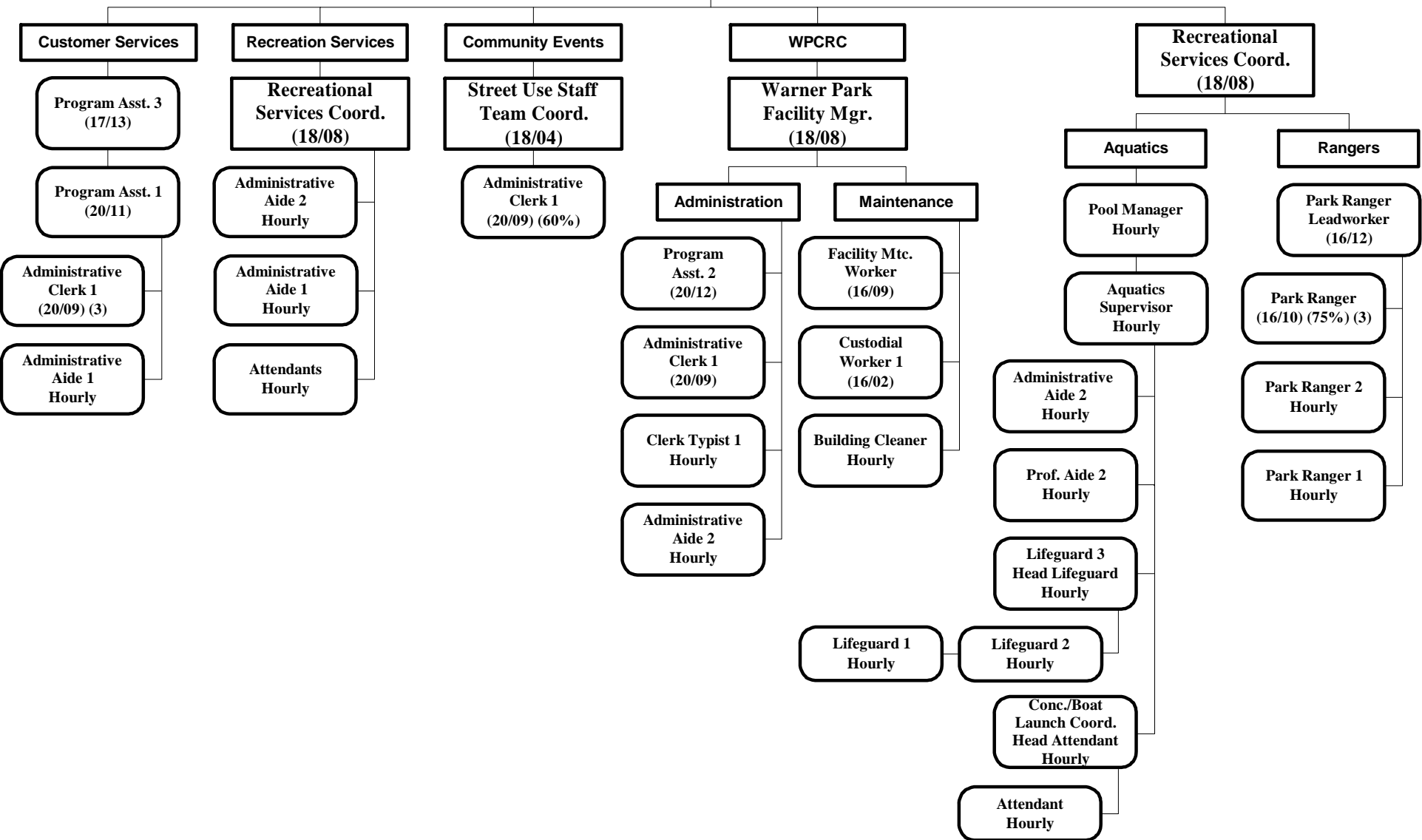
F



D

COMMUNITY SERVICES

Parks Community Services Mgr. (18/12)



E

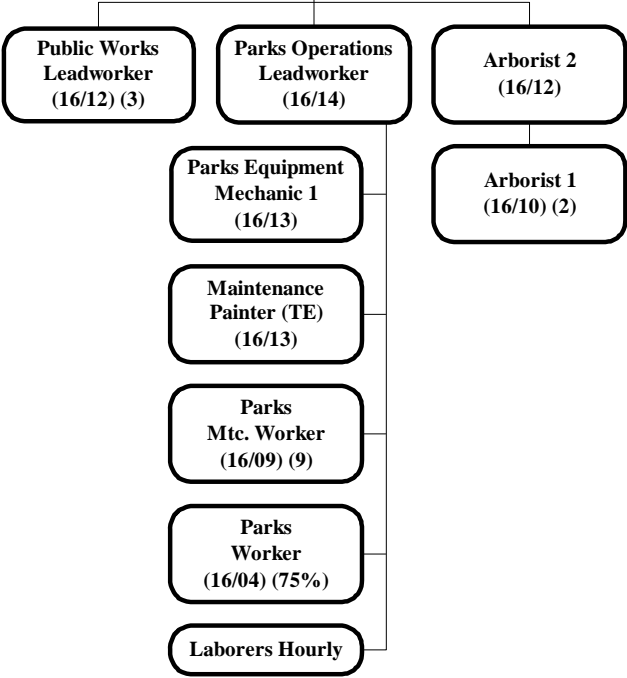
OPERATIONS

Parks
Operations Mgr.
(18/14)

E-1

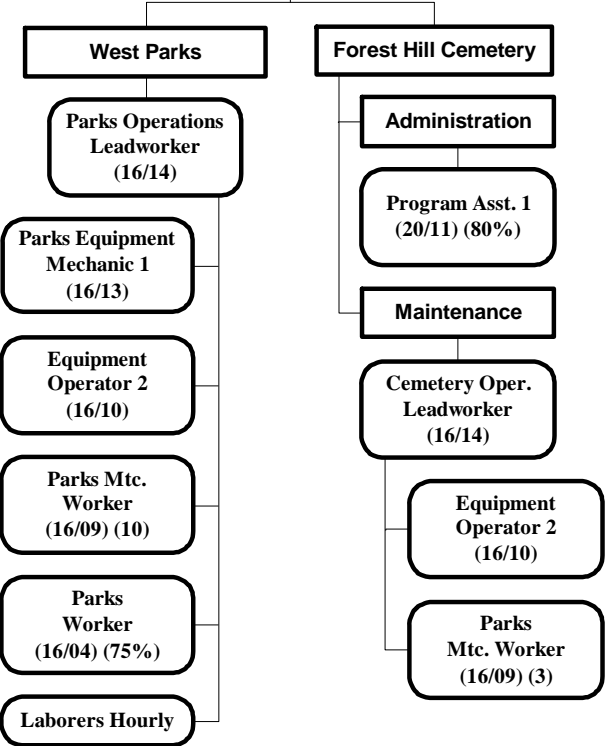
East

Parks General
Supv.
(18/08)



West

Parks General
Supv.
(18/08)



Central/Mall

Parks General
Supv.
(18/08)

