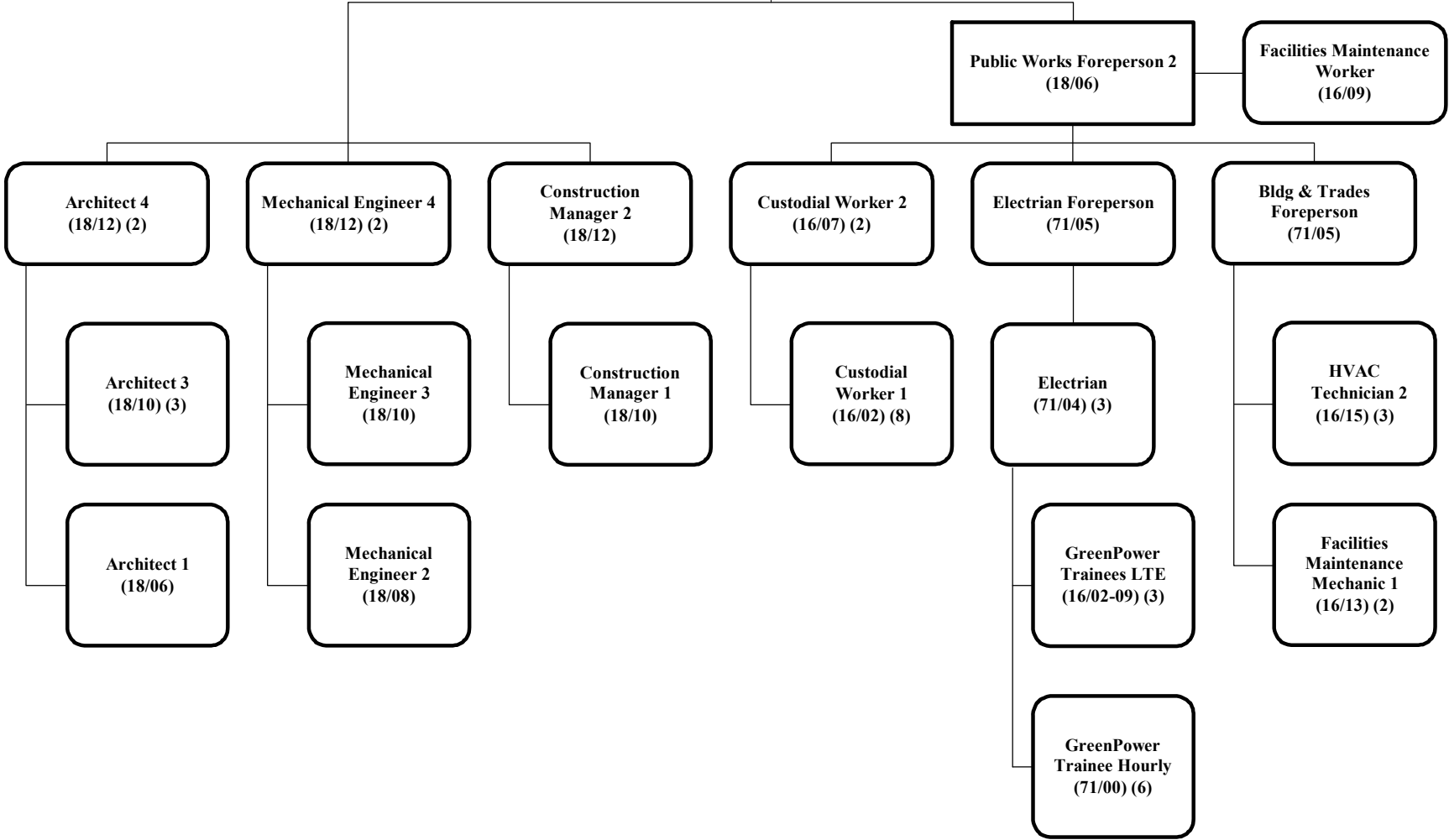


**City Engineer**

**Deputy -  
Facilities**



**City Engineer**

**Deputy - Public Works & Private Development**

**PUBLIC WORKS**

**LAND INFO**

**PRIVATE DEVELOPMENT**

**CONSTRUCTION INSPECTION**

**Principal Engineer 1**  
(18/15)

**Land Info Manager**  
(18/12)

**Engineer 4**  
(18/12)

**Public Works Development Manager**  
(18/12) (2)

**Program Assistant 1**  
(20/11)

**Principal Engineer 2**  
(18/16)

**Program Assistant 1**  
(20/11)

**Engineer 4**  
(18/12) (2)

**Surveyor 2**  
(18/08)

**Engineer 2**  
(18/08) (2)

**Surveyor 2**  
(18/08) (2)

**Construction Inspector 2**  
(15/11) (3)

**Engineer 4**  
(18/12)

**Sidewalk Program Supervisor**  
(18/09)

**Engineer 2**  
(18/08)

**Engineering Program Specialist 2**  
(16/19)

**Engineer 1**  
(18/06) (2)

**Construction Inspector 1**  
(15/09) (2)

**Engineer 2**  
(18/08)

**Construction Inspector 2**  
(15/11) (3)

**Engineer 1**  
(18/06)

**Civil Technician 2**  
(16/14)

**Engineer - Hrly**  
(17/00)

**Engineering Assistant 1 & 2 Hrly**  
(15/00)

**Construction Inspector 2**  
(15/11) (3)

**Construction Inspector 1**  
(15/09) (2)

**Construction Inspector 1**  
(15/09) (2)

**Engineering Assistant 1 & 2 Hrly**  
(15/00)

