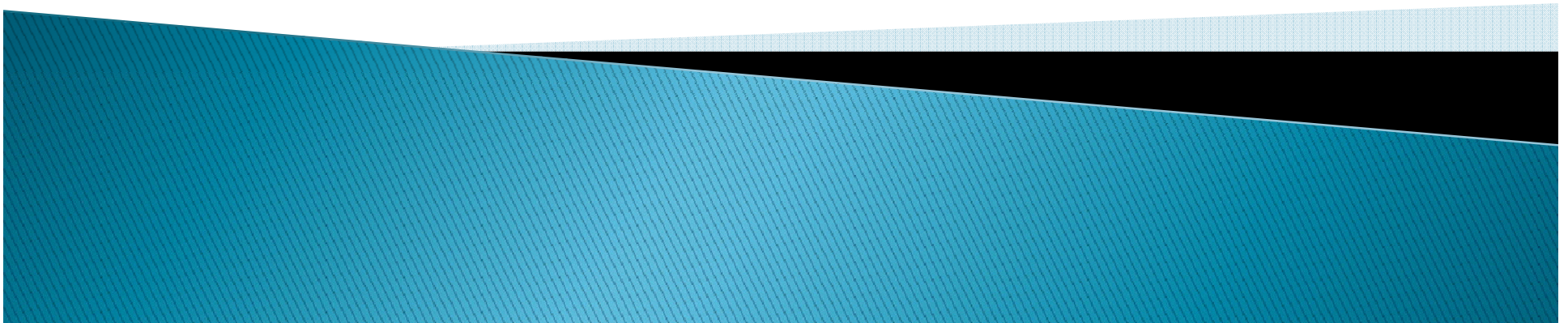


Proposed Bike Path and Greenway Project, Beltline to Tree Lane

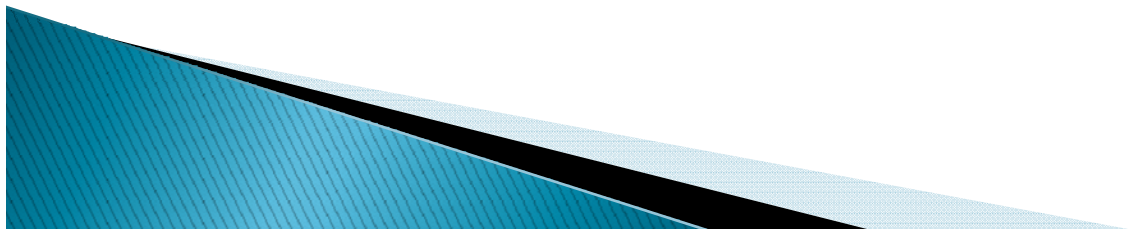
Lisa Coleman & Sally Swenson
City of Madison Engineering

Public Information Meeting
March 26, 2015



Project Scope

- ▶ New bike path (multi-use) extending through greenway, from the Beltline on-ramp to Tree Lane.
- ▶ Greenway Maintenance and improvement
- ▶ Storm sewer work under Tree Lane

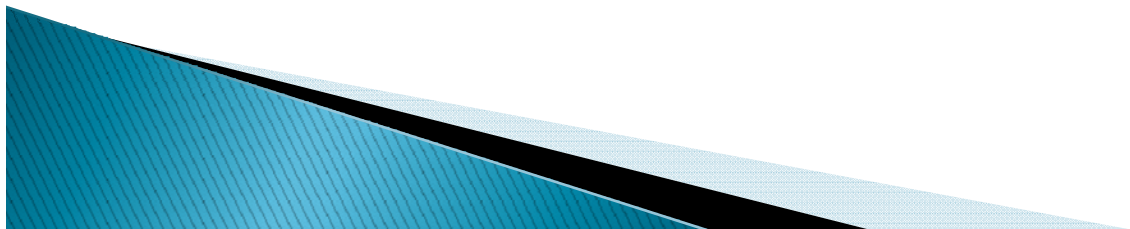


Project Overview



Purpose of bike path

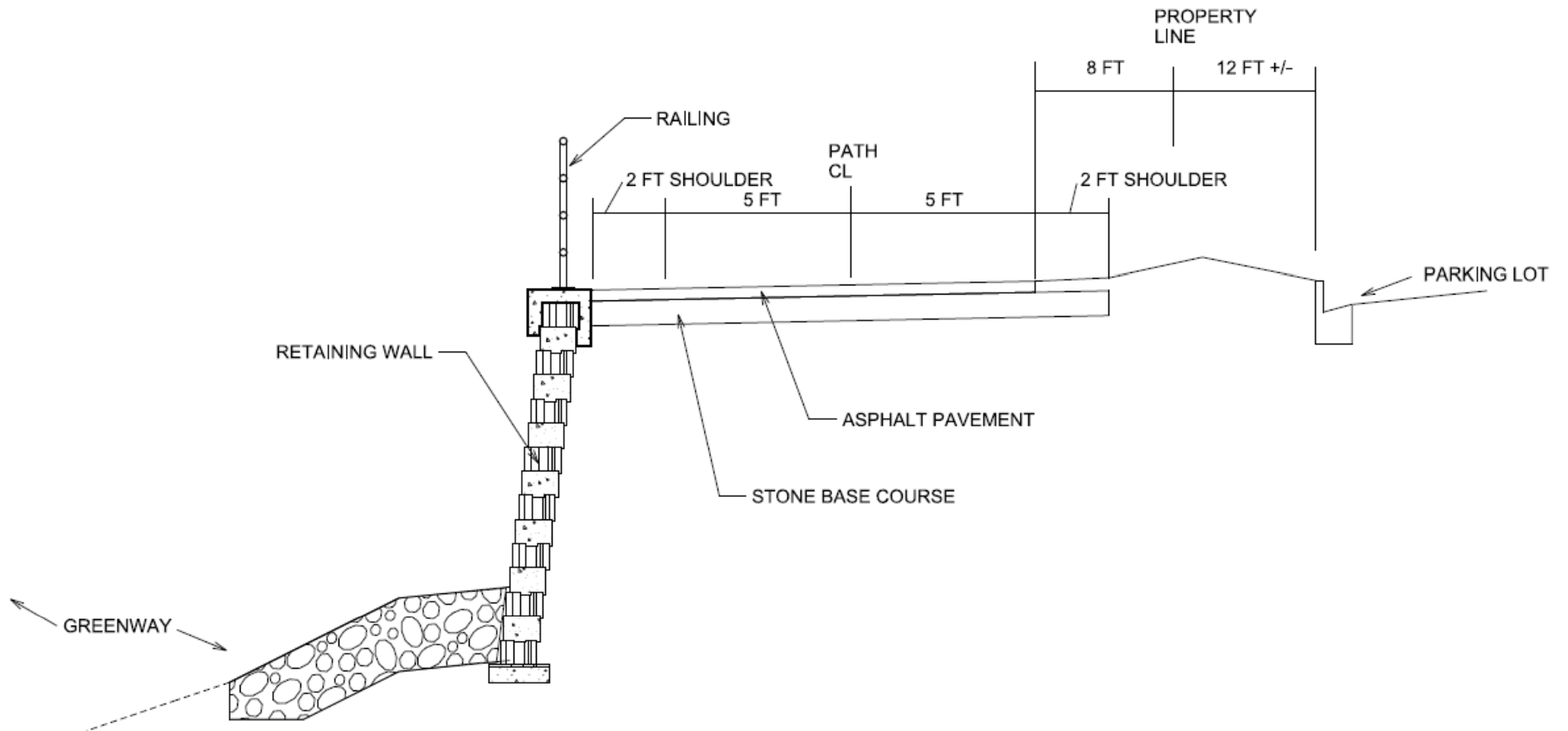
- ▶ Provides off-street connection for neighborhoods north of Mineral Point Road to vast biking network now available west of the beltline
- ▶ Ice Age Junction Path, Access to Epic, UW research park, Dodgeville....



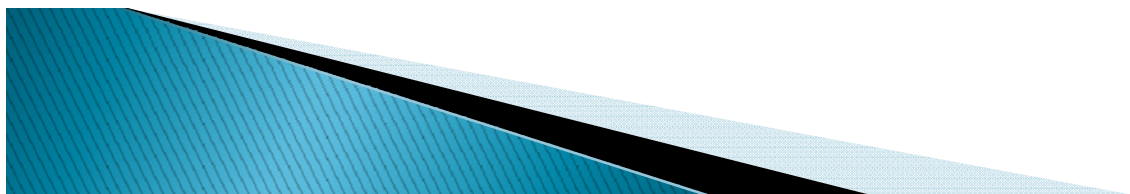
Bike Network



Bike Path Details

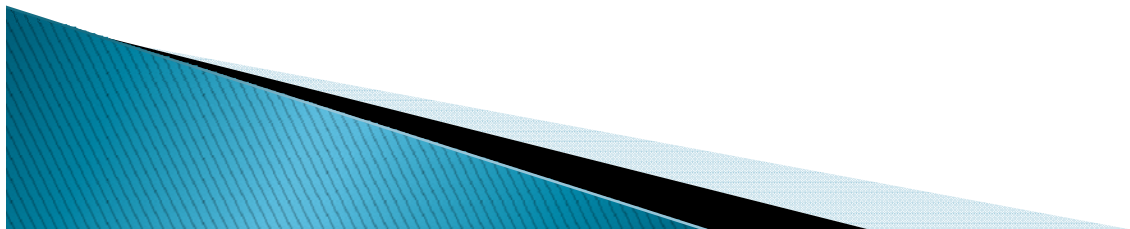


TYPICAL BIKE PATH SECTION



Greenway

- ▶ Channel Dredging and Regrading
 - Remove Accumulated Sediment
 - Provide Maintenance Access
 - Improve Habitat



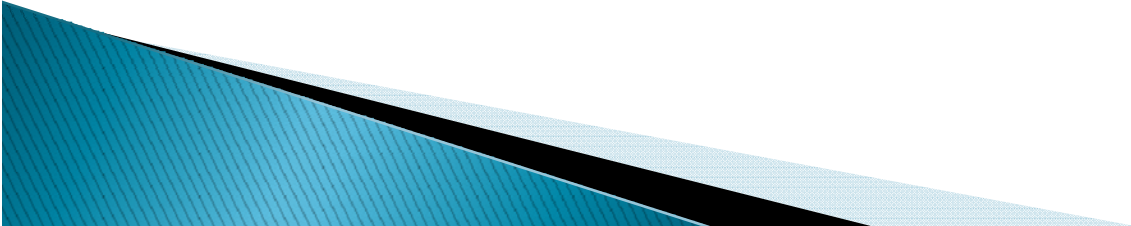
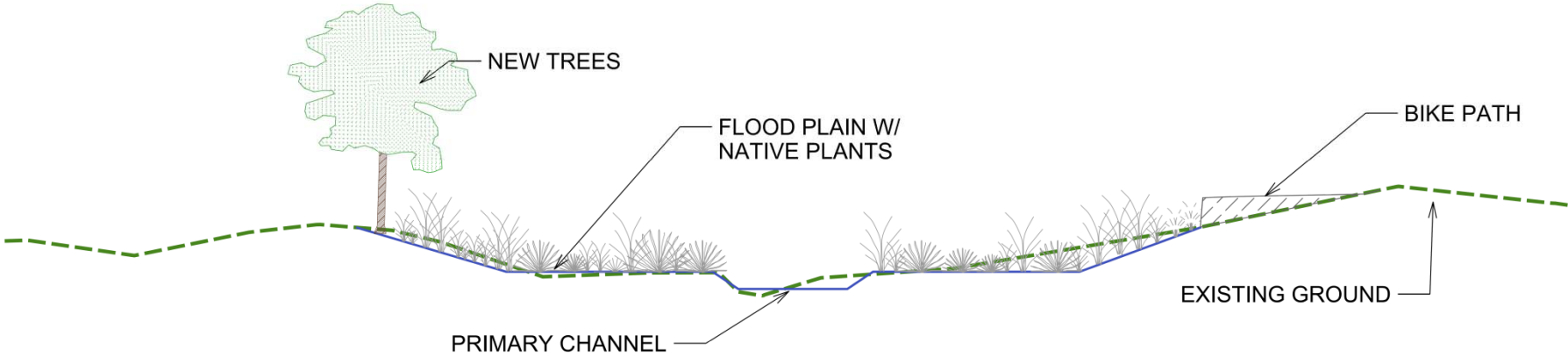
Greenway



Greenway

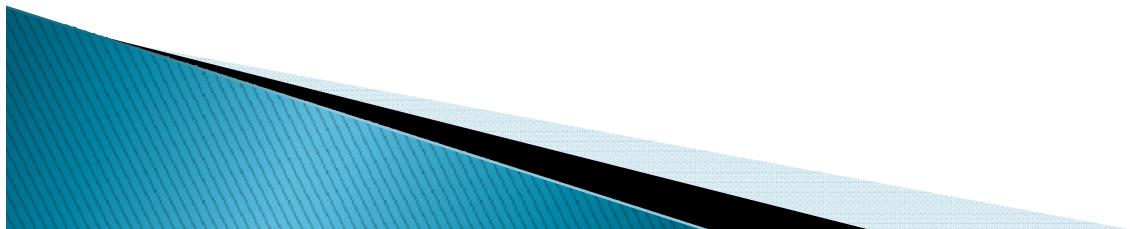


Greenway



Tree Removal

- ▶ Species
 - Box Elder
 - Silver Maple
 - Ash
- ▶ Maintenance Access
- ▶ Project Conflict
- ▶ Tree Health



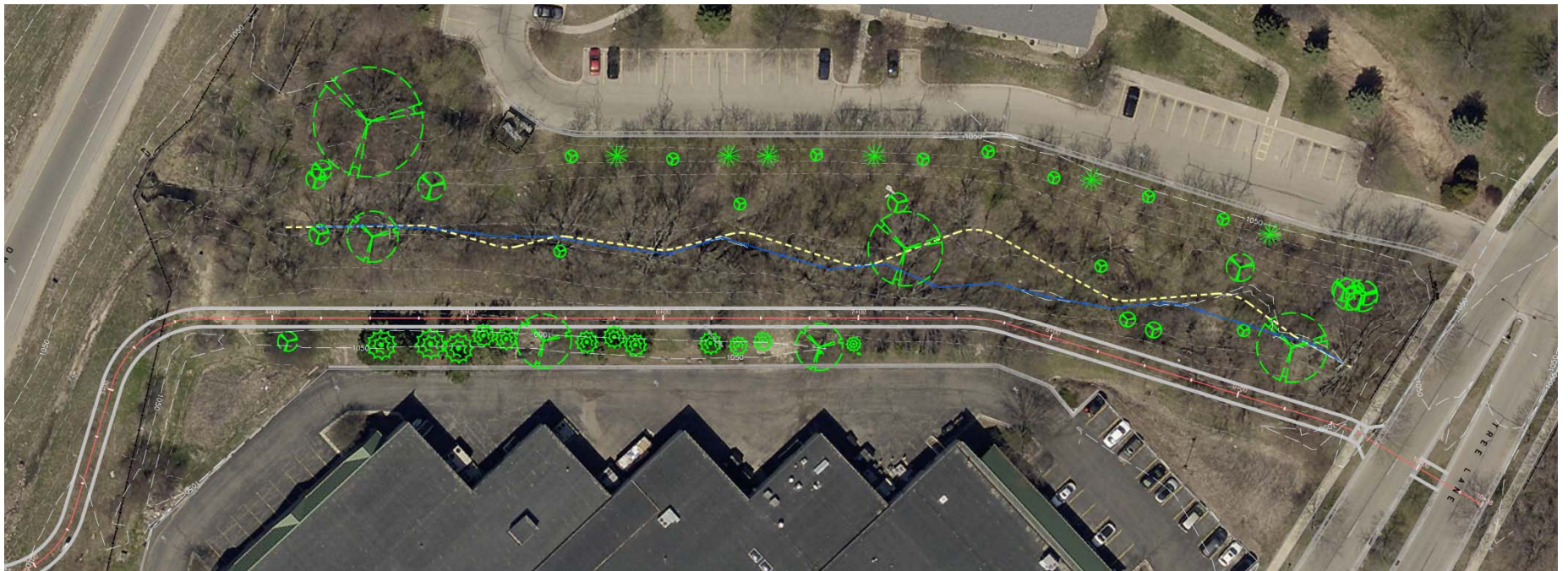
Tree Removal



Tree Removal

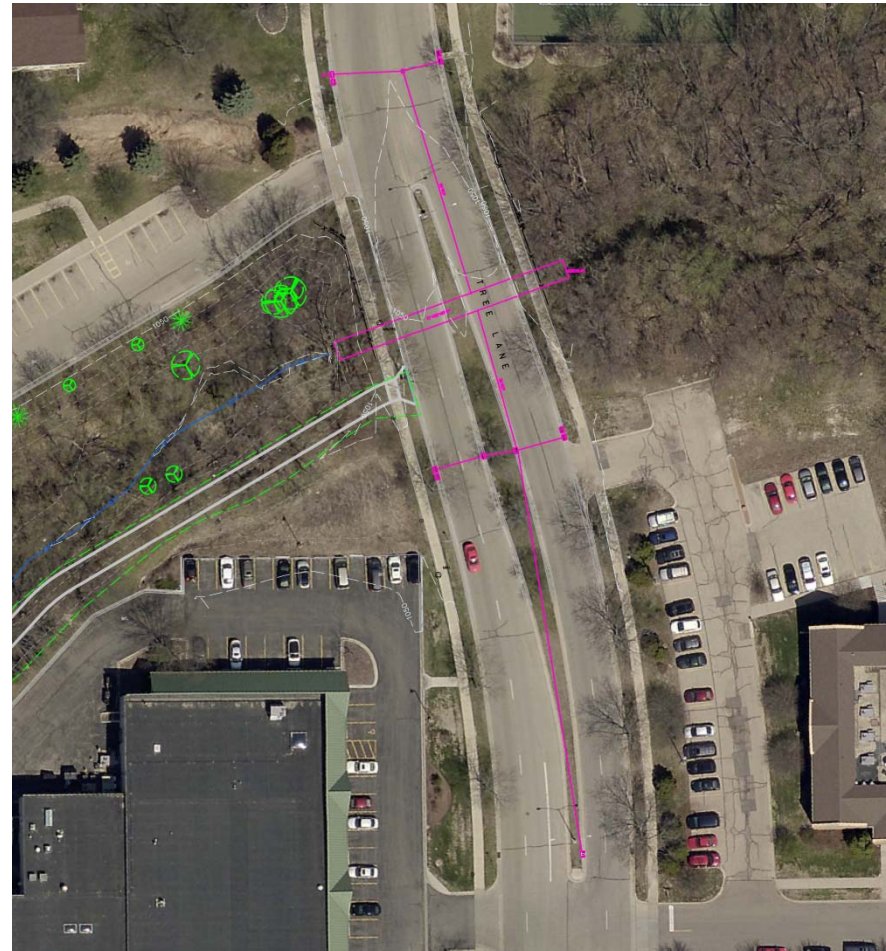


Revegetation



Storm Sewer in Tree Lane

- ▶ Reroute pipes draining from north and south
- ▶ Will reroute all traffic to two southbound lanes

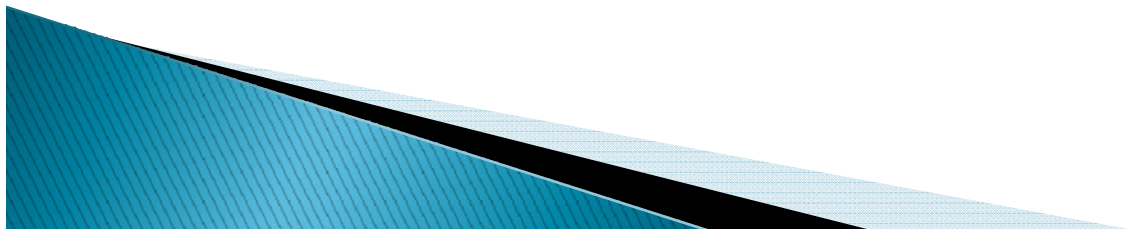


Tentative Schedule

- ▶ Spring 2015, permits, easements, final design
- ▶ BPW 6/3/15
- ▶ CC 6/16/15
- ▶ Advertise for Bids on 7/24/15
- ▶ Start Construction late September 2015, finish spring 2016

Contacts

- ▶ Bike Path- Lisa Coleman 266-4093
lcoleman@cityofmadison.com
- ▶ Greenway- Sally Swenson 266-4862
sswenson@cityofmadison.com



Discussion

