

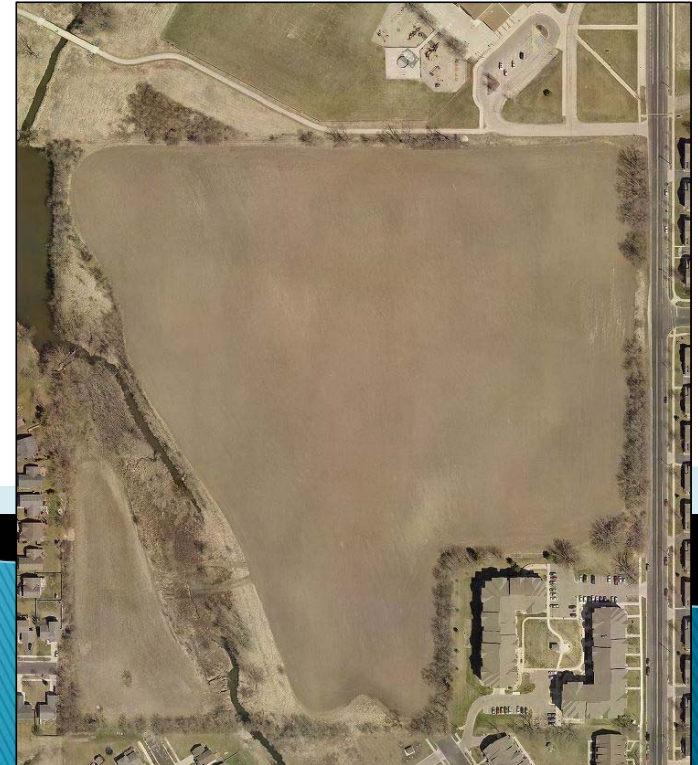
<b>6:30 – 6:40</b>	Welcome
<b>6:40 – 7:15</b>	Presentation
<b>7:15 – 8:00</b>	Presentation Q & A
<b>8:00 – 8:30</b>	Small Group Discussions





# Rockstream Drive Construction 2020/21

**Public Preconstruction Meeting  
by City of Madison Engineering Division  
January 29, 2020**



# Evening Overview

## Thank You to Chavez Elementary!

- ▶ Welcome (Hannah Mohelnitzky, City of Madison)
- ▶ Presentation (Andrew Zwieg, Tim Parks, Matt Allie, City of Madison)
- ▶ Q&A (facilitated by Hannah Mohelnitzky, City of Madison)
- ▶ Wrap Up (Hannah Mohelnitzky, City of Madison)
- ▶ Small Group Discussions (City of Madison)

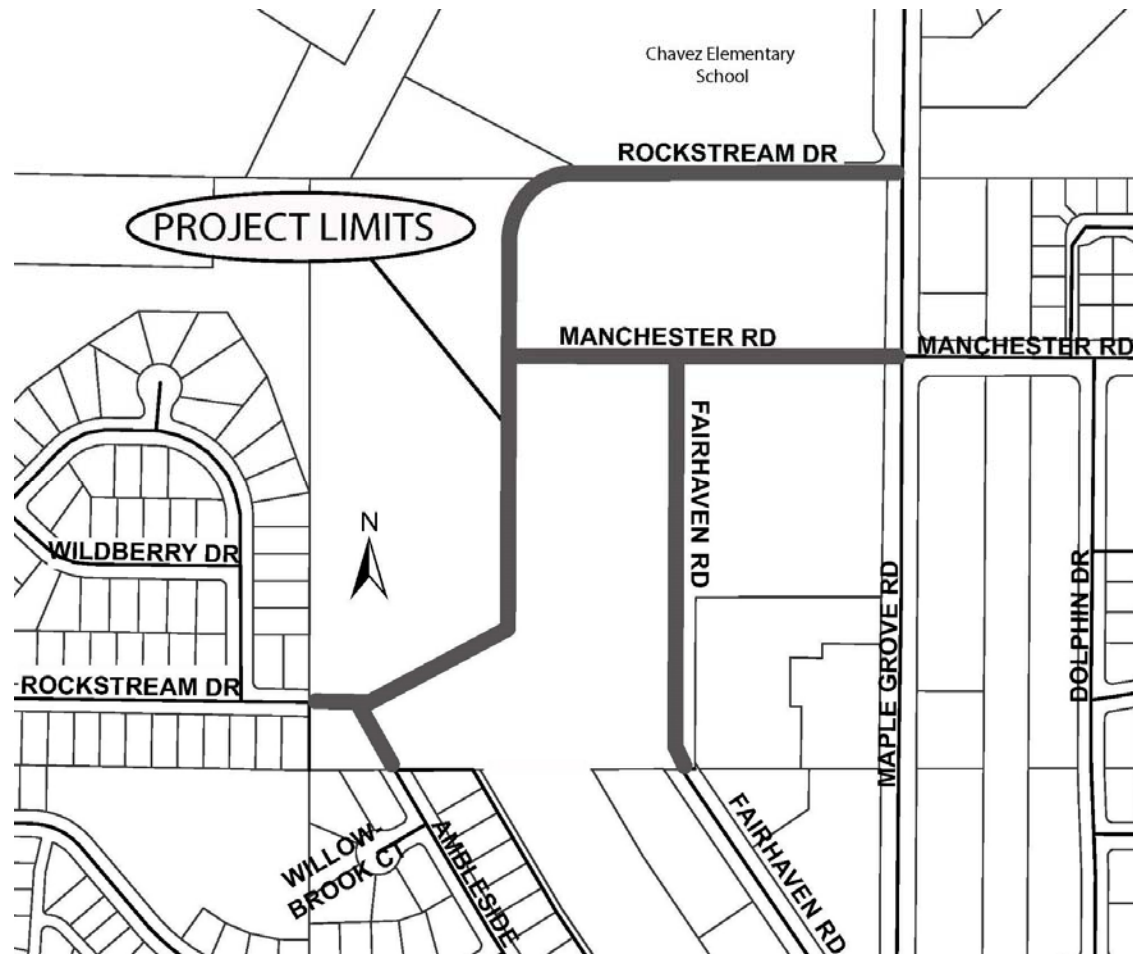


# Presentation Overview

- ▶ Project Location
- ▶ Neighborhood Plan
- ▶ Public Right-Of-Way
- ▶ Existing Conditions
- ▶ Proposed Design
- ▶ Forestry
- ▶ Construction & Access
- ▶ Assessment Policy & Costs
- ▶ Project Schedule
- ▶ Contact Information & Resources



# Project Location

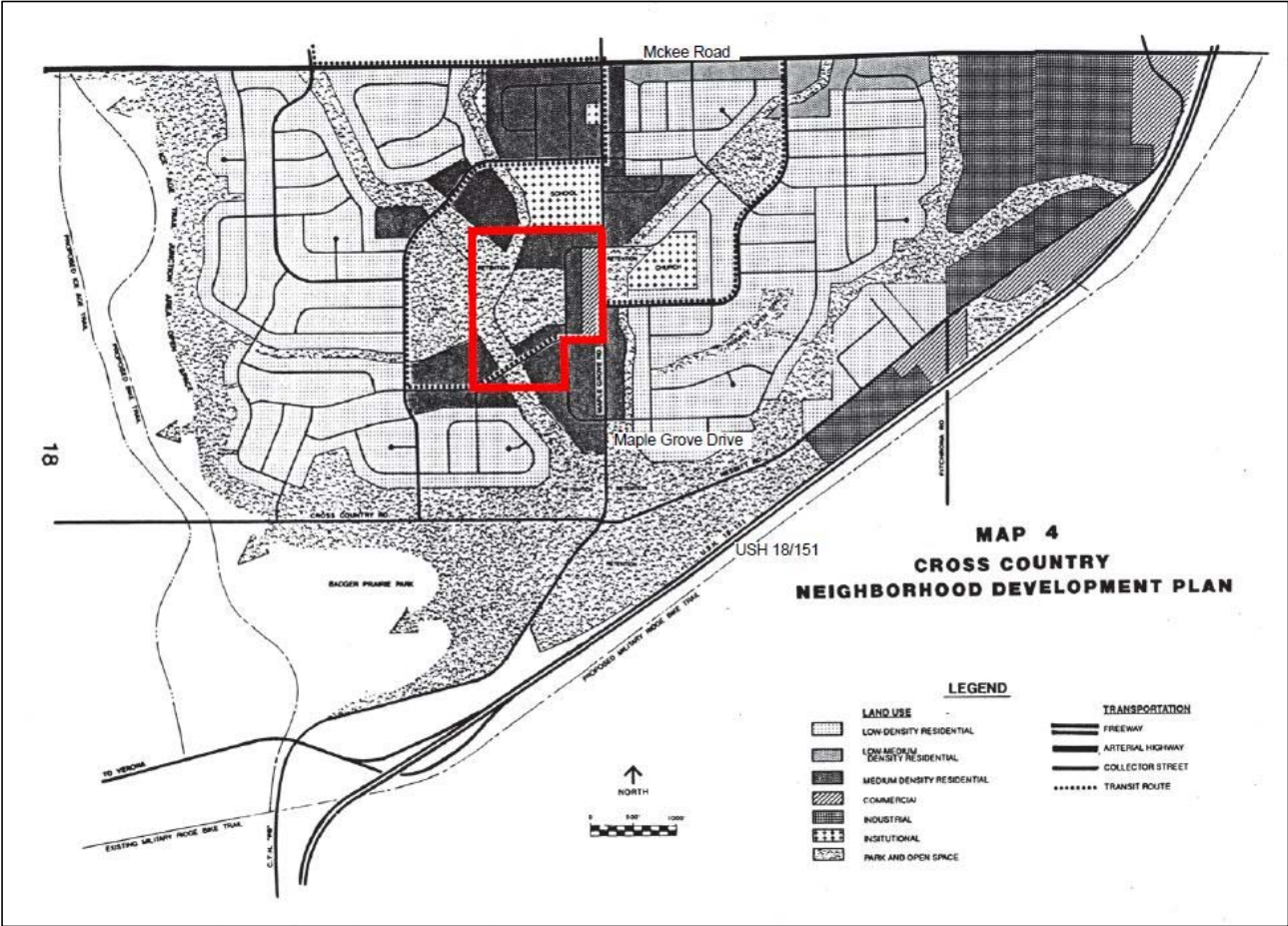


CITY OF MADISON



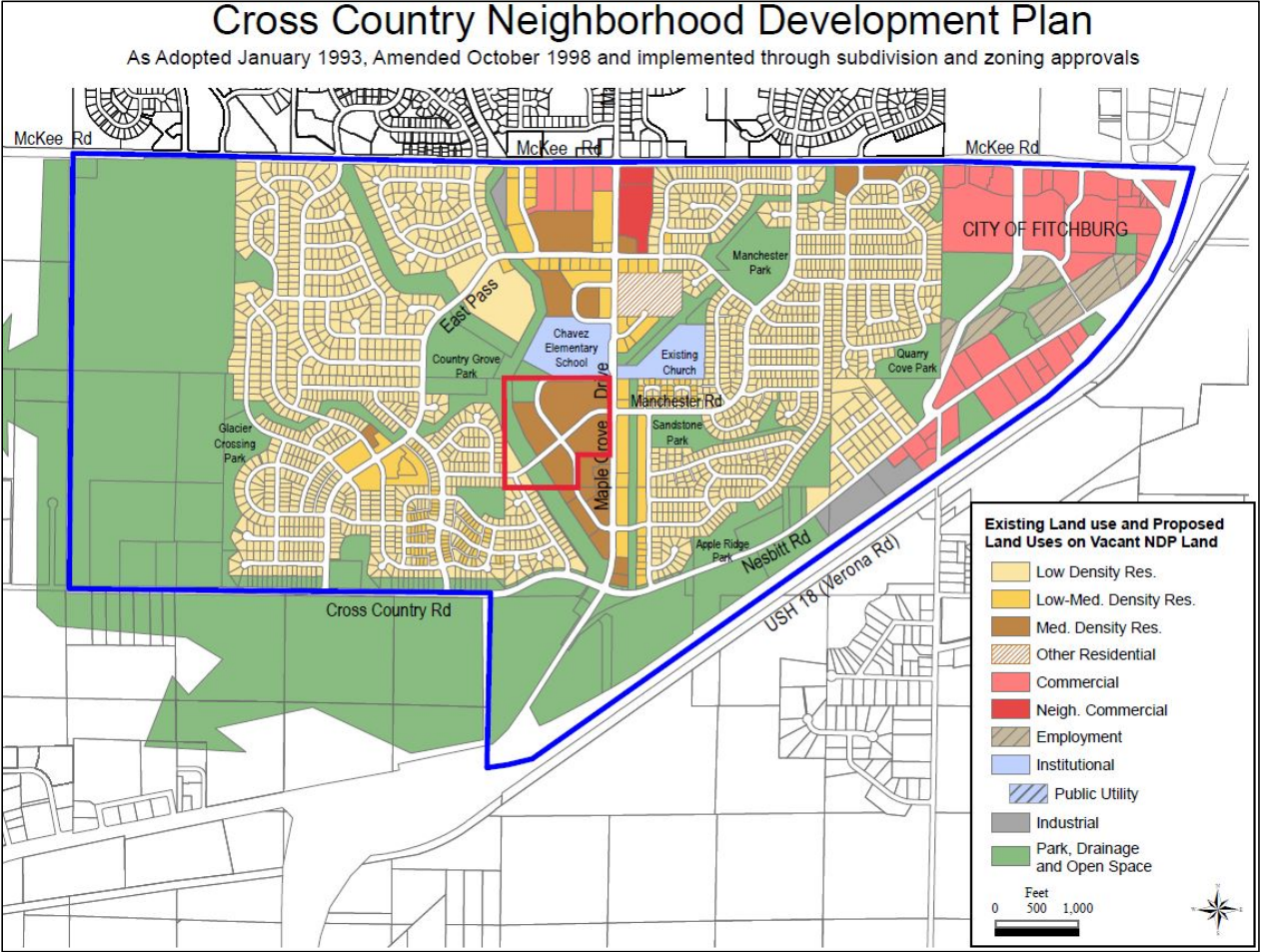
# Neighborhood Plan

- ▶ Street connections shown in the 1993 neighborhood plan



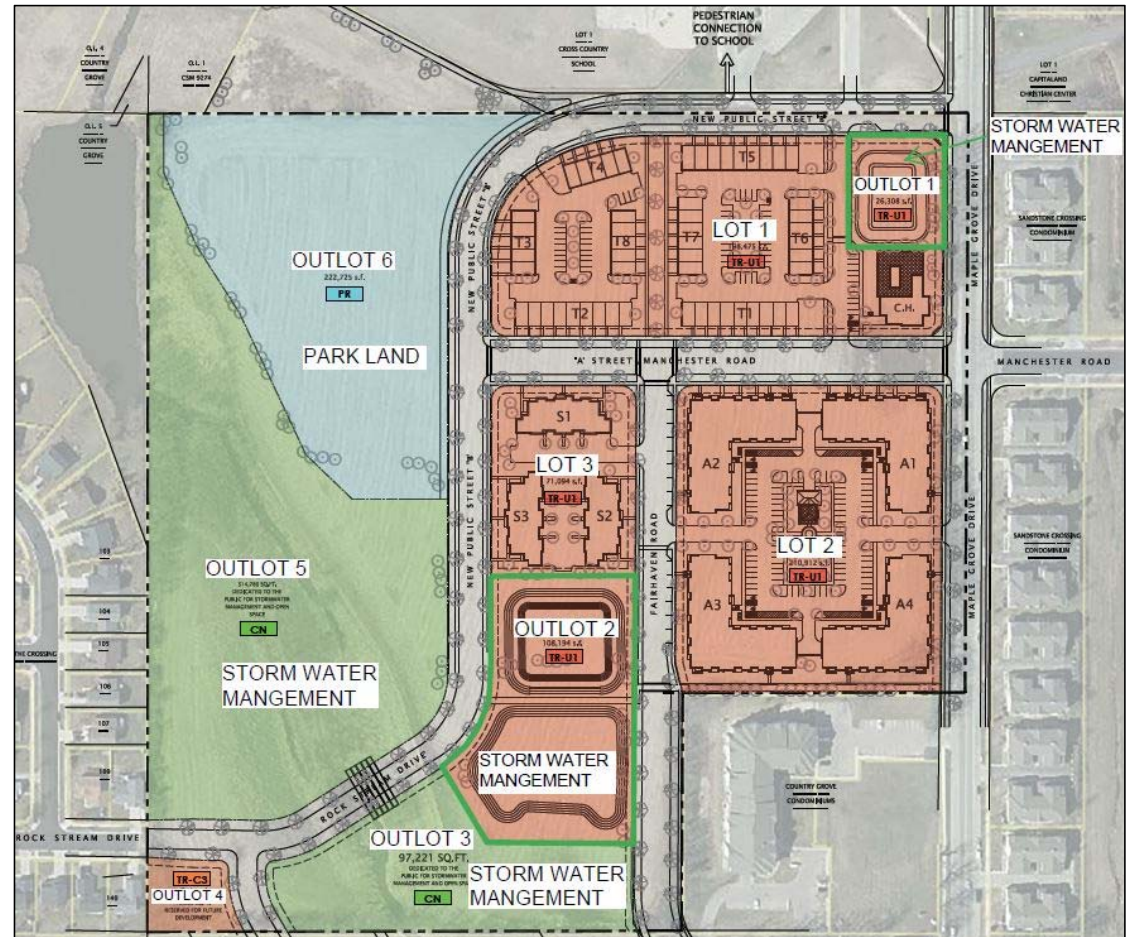
# Neighborhood Plan

- ▶ Street connections adapted in 2017 neighborhood plan



# Neighborhood Plan

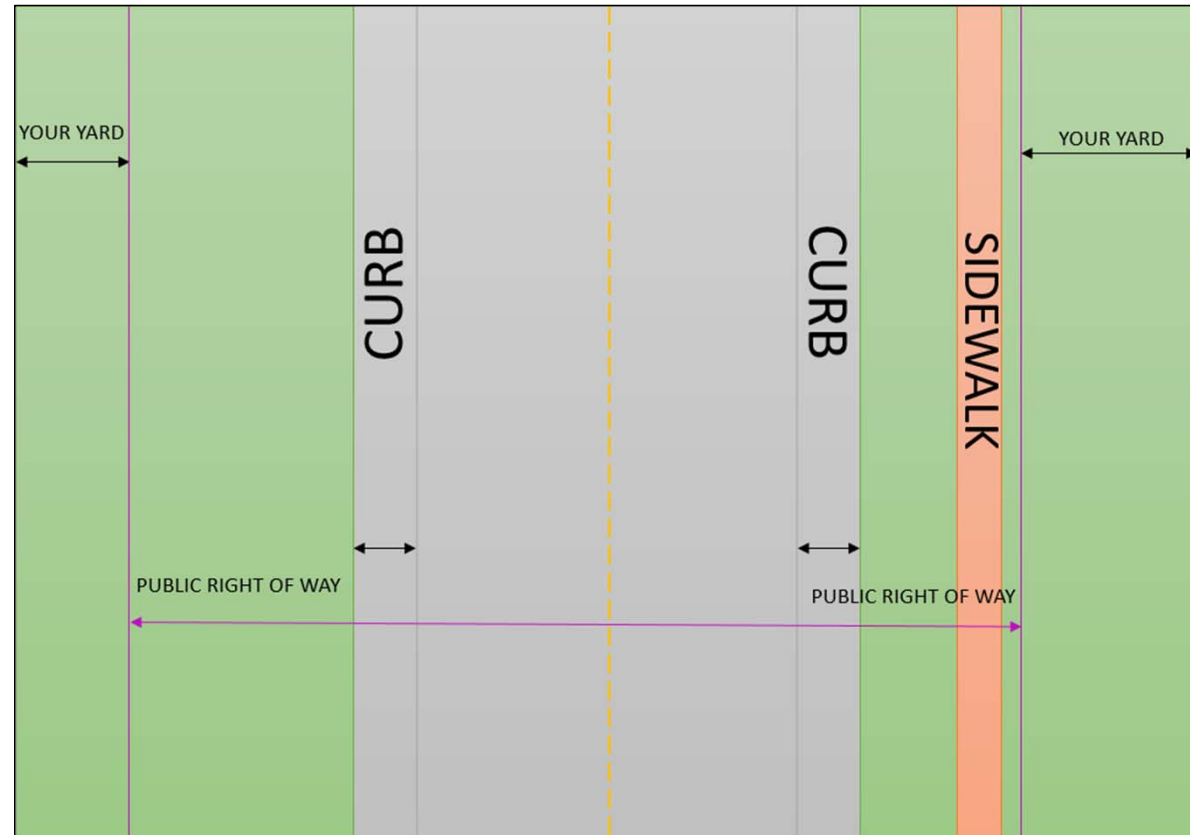
- ▶ Lot 1, 2, & 3
  - Land dedicated for development
- ▶ Outlot 1 & 2
  - Land dedicated to the public for storm water management
- ▶ Outlot 3 & 5
  - Land dedicated to the public for storm water management and open space
- ▶ Outlot 4
  - Land dedicated for future development
- ▶ Outlot 6
  - Land dedicated to the public for park land





# Public Right-Of-Way

- ▶ Space of property that extends typically from the curb into the homeowner's yard
- ▶ Property owners are responsible for maintaining the public right-of-way
- ▶ The City uses this portion of the yard to improve utilities or other infrastructure the public uses



# Existing Conditions

- ▶ Agriculture land
- ▶ Drainage way
- ▶ Chavez Elementary School
  - Multi-use path
- ▶ Rockstream Drive & Ambleside Drive
  - Width: 32'
  - Surface: Asphalt
  - Sidewalk: Both Sides
  - Sanitary: 8" PVC 1999
  - Water Main: 8" Ductile Iron 1999
  - Storm Sewer: 18" Concrete 1999



# Proposed Design

- ▶ Rockstream Drive
  - Asphalt pavement, gravel base
  - 6" curb & gutter
  - 10' multi-use path west side
  - 5' sidewalk east side
  - Curb ramps at Manchester Road, Maple Grove Drive, & Ambleside Drive
  - Width 32'-43' (66'-70' R/W)
    - Two travel & one parking lane (32') & two parking lanes (38')
  - Connect to Maple Grove Drive
    - Exit right & left turn lanes
    - Entrance lane
  - Potential future transit route
  - Extend Ambleside Drive



# Proposed Design

- ▶ Ambleside Drive
  - Asphalt pavement, gravel base
  - 6" curb & gutter
  - 5' sidewalk on both sides
  - Width 32' (60' R/W)
    - Two travel & parking lanes
  - Curb ramps at Rockstream Drive
  - Connect to Rockstream Drive



# Proposed Design

- ▶ Manchester Road
  - Built by a private developer
    - City to take ownership after construction
  - Asphalt pavement, gravel base
  - 6" curb & gutter
  - 5' sidewalk on both sides
  - Width 48' (80' R/W)
    - Two travel, bike, & parking lanes
  - Curb ramps at Fairhaven Road & Maple Grove Drive
  - Potential future transit route
  - Connect to Rockstream Drive



CITY OF **MADISON**



# Proposed Design

- ▶ Fairhaven Road
  - Built by a private developer
    - City to take ownership after construction
  - Asphalt pavement, gravel base
  - 6" curb & gutter
  - 5' sidewalk on both sides
  - New sidewalk between Rockstream & Maple Grove
  - Width 40'
    - Two travel & parking lanes
  - Curb ramps at Manchester Road
  - Connect to Manchester Road



# Proposed Design

- ▶ Maple Grove Drive
  - Built by a private developer
    - City to take ownership after construction
  - Asphalt pavement, gravel base
  - Complete 6" curb & gutter & sidewalk connection along southbound
  - Width 48' (66' R/W)
    - Two travel, bike, parking lanes
  - Curb ramps at Manchester Road
  - Existing transit route

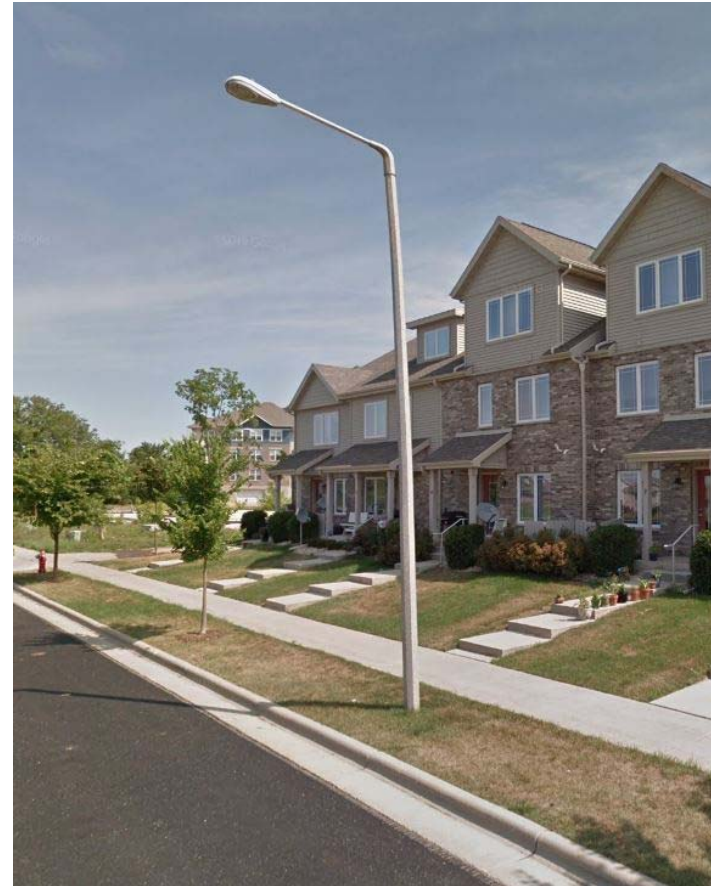


CITY OF **MADISON**



# Proposed Design

- ▶ New street lighting along all streets
  - Owned by Alliant Energy
    - Concrete poles
    - LED Fixtures
    - Height: 25 feet
    - Spacing: 180 Feet





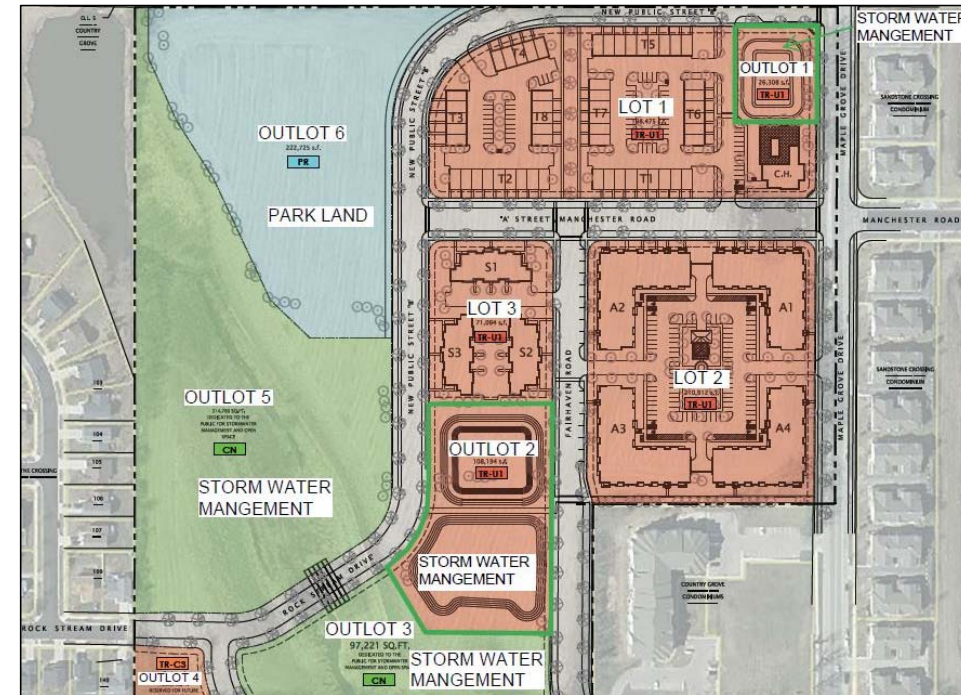
# Proposed Design

- ▶ Proposed Utility Improvements
  - Sanitary sewer main will be installed
    - 8-inch PVC
  - Water main will be installed on Fairhaven and Manchester as part of a private development project
  - Storm sewer will be installed in the street



# Proposed Design

- ▶ Stormwater Management
  - Wet detention and infiltration basins
  - Reviewing developer's engineer's design for compliance with standards and ordinances
    - Road and building runoff directed to O.L.s
    - Control runoff peak
    - Infiltrate water on-site
    - Sediment control
    - Oil and grease control
- ▶ Cannot record final right-of-way or begin development construction until stormwater plan is approved by City Engineering



# Proposed Design

- ▶ Rockstream Drive drainage way crossing
  - Six box culverts will be installed across channel under the road
    - 12 feet wide x 5 feet tall
    - 100 feet long
- ▶ Channel regrading
- ▶ Engineer is analyzing flow through channel and culverts to comply with FEMA regulatory requirements
- ▶ Impacts are minimized and constrained to City property and developers' property



# Forestry

## ▶ Tree Evaluation

- City Forestry will review trees
  - Within City right-of-way for the public street & private development projects
- City Forestry will evaluate the new terraces for planting sites when the project is complete.
- Minimum terrace width for planting is 5 feet
- All new terraces within the development are minimum 7 feet.



# Construction & Access

- ▶ Public Street Project
- ▶ Begins Fall 2020, lasts until Summer 2021
- ▶ Work hours 7 a.m.-7 p.m.
  - No on-street parking during work hours
- ▶ Residential driveway impacts (near Rockstream connection)
  - Potentially closed when the contractor connects sanitary sewer
  - Residents notified 48 hours before
  - Closed up to a cumulative total of 20 days
- ▶ Commercial driveway impacts (near Chavez Elementary)
  - Contractor will have to maintain access

# Construction & Access

- ▶ No disruptions to sewer service
- ▶ Roads closed during construction
- ▶ Maple Grove Road lane periodic lane closures
- ▶ Multi-use path
  - Provide a temporary path and signage
- ▶ Chavez Elementary
  - Summer school
  - Bus/parent pickup/drop off
  - Student and faculty safety



# Assessment Policy & Costs

- ▶ Special charge for work being done that has a direct benefit to the property
- ▶ Property owners adjacent to the project will be assessed for all items of work
- ▶ City of Madison, Madison Metropolitan School District, & Fiduciary Real Estate Development, Inc.
  - Assessed for Rockstream Drive infrastructure



# Project Schedule

- ▶ Public Street Project (Rockstream & Ambleside)
  - February 12, 2020: Transportation Commission
  - March 20, 2020 : Mail Estimated Assessments, Public Hearing Notice
  - April 1, 2020: BPW Approval Public Hearing
  - April 21, 2020: Common Council Approval Hearing
  - Summer 2020: Advertise Bids
  - Fall 2020: Begin Construction
  - August 2021: End Construction





# Project Schedule

- ▶ Private Development Project (Manchester, Fairhaven, Maple Grove)
  - Stormwater Management Report: Approval Pending by City Engineering
  - January 22, 2020: Board of Public Works Approval
  - February 4, 2020: Common Council Approval
  - March 2020: Record Final Right-of-Way
  - Summer 2020: Begin Construction
  - Fall 2020: End Construction



# Contact Information & Resources

- ▶ Engineering
  - Project Manager, Andrew Zwieg, 266-9219, [azwieg@cityofmadison.com](mailto:azwieg@cityofmadison.com)
  - Public Information Officer, Hannah Mohelnitzky, 242-6003, [hmohelnitzky@cityofmadison.com](mailto:hmohelnitzky@cityofmadison.com)
- ▶ Project Website: [cityofmadison.com/engineering/projects/rockstream-drive](http://cityofmadison.com/engineering/projects/rockstream-drive)
  - Sign-up for project email updates on the website
  - Updates on closures & work progress will be posted to the project website
- ▶ Facebook – City of Madison Engineering
- ▶ Twitter – @MadisonEngr
- ▶ Everyday Engineering Podcast – search “Everyday Engineering” on Apple iTunes or GooglePlay



<b>6:30 – 6:40</b>	Welcome
<b>6:40 – 7:15</b>	Presentation
<b>7:15 – 8:00</b>	Presentation Q & A
<b>8:00 – 8:30</b>	Small Group Discussions

