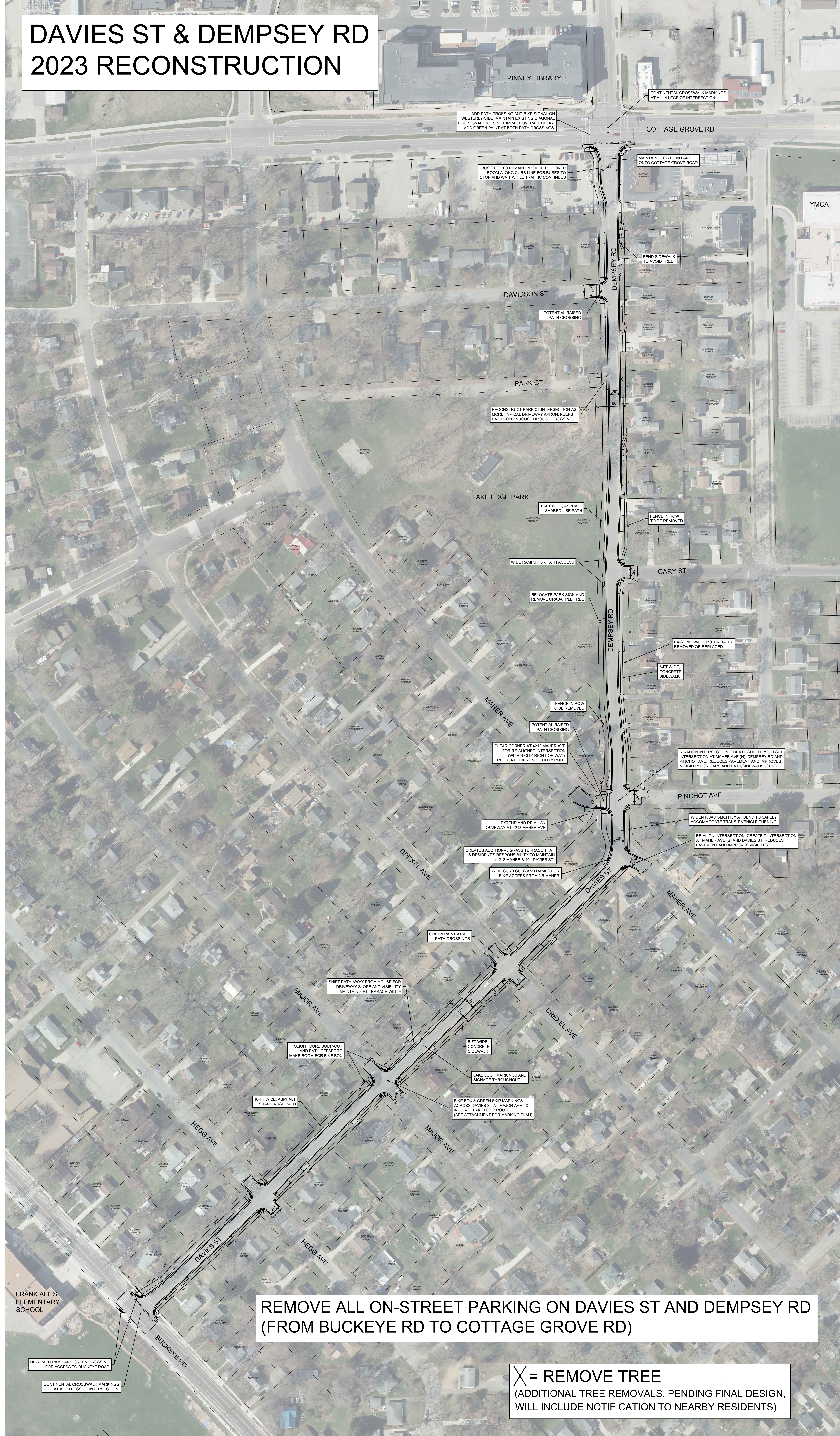


# DAVIES ST & DEMPSEY RD 2023 RECONSTRUCTION



ADD PATH CROSSING AND BIKE SIGNAL ON WESTERLY-SIDE. MAINTAIN EXISTING DIAGONAL BIKE SIGNAL. DOES NOT IMPACT OVERALL DELAY. ADD GREEN PAINT AT BOTH PATH CROSSINGS.

CONTINENTAL CROSSWALK MARKINGS AT ALL 4 LEGS OF INTERSECTION

BUS STOP TO REMAIN. PROVIDE FOLLOVER ROOM ALONG CURB LINE FOR BUSES TO STOP AND WAIT WHILE TRAFFIC CONTINUES

MAINTAIN LEFT-TURN LANE ONTO COTTAGE GROVE ROAD

BEND SIDEWALK TO AVOID TREE

POTENTIAL RAISED PATH CROSSING

RECONSTRUCT PARK CT INTERSECTION AS MORE TYPICAL DRIVEWAY APPROX. KEEPS PATH CONTINUOUS THROUGH CROSSING

10-FT WIDE, ASPHALT SHARED-USE PATH

WIDE RAMPS FOR PATH ACCESS

RELOCATE PARK SIGN AND REMOVE CRABAPPLE TREE

FENCE IN ROW TO BE REMOVED

GARY ST

EXISTING WALL POTENTIALLY REMOVED OR REPLACED

5-FT WIDE CONCRETE SIDEWALK

FENCE IN ROW TO BE REMOVED

POTENTIAL RAISED PATH CROSSING

CLEAR CORNER AT 4212 MAHER AVE FOR REALIGNED INTERSECTION (WITHIN CITY RIGHT-OF-WAY). RELOCATE EXISTING UTILITY POLE

RE-ALIGN INTERSECTION. CREATE SLIGHTLY OFFSET INTERSECTION AT MAHER AVE IN DEMPSEY RD AND PINCHOT AVE. REDUCES PAVEMENT AND IMPROVES VISIBILITY FOR CARS AND PATHSIDEWALK USERS

EXTEND AND RE-ALIGN DRIVEWAY AT 4213 MAHER AVE

WIDEN ROAD SLIGHTLY AT BEND TO SAFELY ACCOMMODATE TRANSIT VEHICLE TURNING

CREATES ADDITIONAL GRASS TERRACE THAT IS RESIDENT'S RESPONSIBILITY TO MAINTAIN (4213 MAHER & 404 DAVIES ST)

RE-ALIGN INTERSECTION. CREATE T-INTERSECTION AT MAHER AVE (S) AND DAVIES ST. REDUCES PAVEMENT AND IMPROVES VISIBILITY

WIDE CURB CUTS AND RAMPS FOR BIKE ACCESS FROM MAHER

GREEN PAINT AT ALL PATH CROSSINGS

SHIFT PATH AWAY FROM HOUSE FOR DRIVEWAY SLOPE AND VISIBILITY. MAINTAIN 3-FT TERRACE WIDTH

SLIGHT CURB BUMP-OUT AND PATH OFFSET TO MAKE ROOM FOR BIKE BOX

5-FT WIDE CONCRETE SIDEWALK

LAKE LOOP MARKINGS AND SIGNAGE THROUGHOUT

10-FT WIDE, ASPHALT SHARED-USE PATH

BIKE BOX & GREEN SKIP MARKINGS ACROSS DAVIES ST AT MAJOR AVE TO INDICATE LAKE LOOP ROUTE (SEE ATTACHMENT FOR MARKING PLAN)

FRANK ALLIS ELEMENTARY SCHOOL

**REMOVE ALL ON-STREET PARKING ON DAVIES ST AND DEMPSEY RD (FROM BUCKEYE RD TO COTTAGE GROVE RD)**

NEW PATH RAMP AND GREEN CROSSING FOR ACCESS TO BUCKEYE ROAD

CONTINENTAL CROSSWALK MARKINGS AT ALL 3 LEGS OF INTERSECTION

**X = REMOVE TREE**  
(ADDITIONAL TREE REMOVALS, PENDING FINAL DESIGN, WILL INCLUDE NOTIFICATION TO NEARBY RESIDENTS)