



# New Sidewalk Installation - 2022

**Public Information Meeting  
by City of Madison Engineering Division  
October 12, 2021**

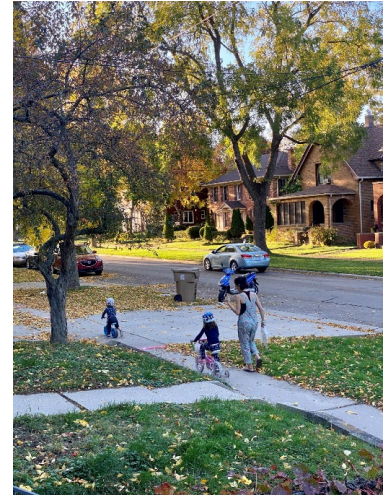
# Preview of presentation

- Why Sidewalks?
- Evaluated Locations
- Impacts & Recommendations
- Scope of Work
- Construction and Access
- Assessment Policy and Cost
- Anticipated Project Schedule
- Contact Information and Resources
- Questions/Input



# Why Sidewalks?

- ▶ Safety
  - Sidewalks offer a protected dedicated space for people to walk
- ▶ Accessibility
  - Sidewalks provide accessibility, regardless of ability, including for all residents or visitors with mobility challenges, with limited sight, and those with cognitive limitations
- ▶ Safe Routes to School
  - Walking and cycling to school develops positive lifelong habits and has shown to have a positive impact on learning
- ▶ Aging in Place
  - Sidewalks support access and exercise for seniors and caregivers and can provide a space for community interaction



# Why Sidewalks?

- ▶ Sustainability
  - Short trips can be done by walking more easily; sidewalks help people make those trips easier
- ▶ Improved physical activity
  - AARP reports that people who live in neighborhoods with sidewalks are 47% more likely than residents of areas without sidewalks to be active at least 39 minutes a day.
- ▶ City resident feedback
  - Connectivity, safety when walking & improved pedestrian spaces are important to Madison residents





# Imagine Madison Comprehensive Plan – Sidewalks

## Strategy 8

**Expand and improve the city's pedestrian and bicycle networks to enable safe and convenient active transportation.**

### Actions:

- a. Proactively fill gaps in the pedestrian and bicycle network.
- b. Continue to integrate pedestrian and bicycle safety improvements and amenities into new and reconstructed streets.



# Madison's Vision Zero Commitment

- ▶ Eliminate all fatal and serious injuries by 2030
- ▶ Emphasis on smart street design and operations to account for human error

## Pedestrians and Cyclists are Disproportionately Represented in Injuries and Fatalities

Pedestrians and cyclists are involved in 4% of reported crashes...



...but they represent 27% of those killed or injured in crashes.



CITY OF **MADISON**



# Complete Green Streets

- ▶ Plan for implementing City's Complete Streets policy
  - Complete Streets are streets designed and operated to enable safe use and support mobility for all users including people walking, biking, taking transit and driving.
- ▶ Guide for future street project designs
- ▶ Ensure improvements are applied across the City equitably
- ▶ Ensure green improvements are made in the most impactful locations



# Let's Talk Streets

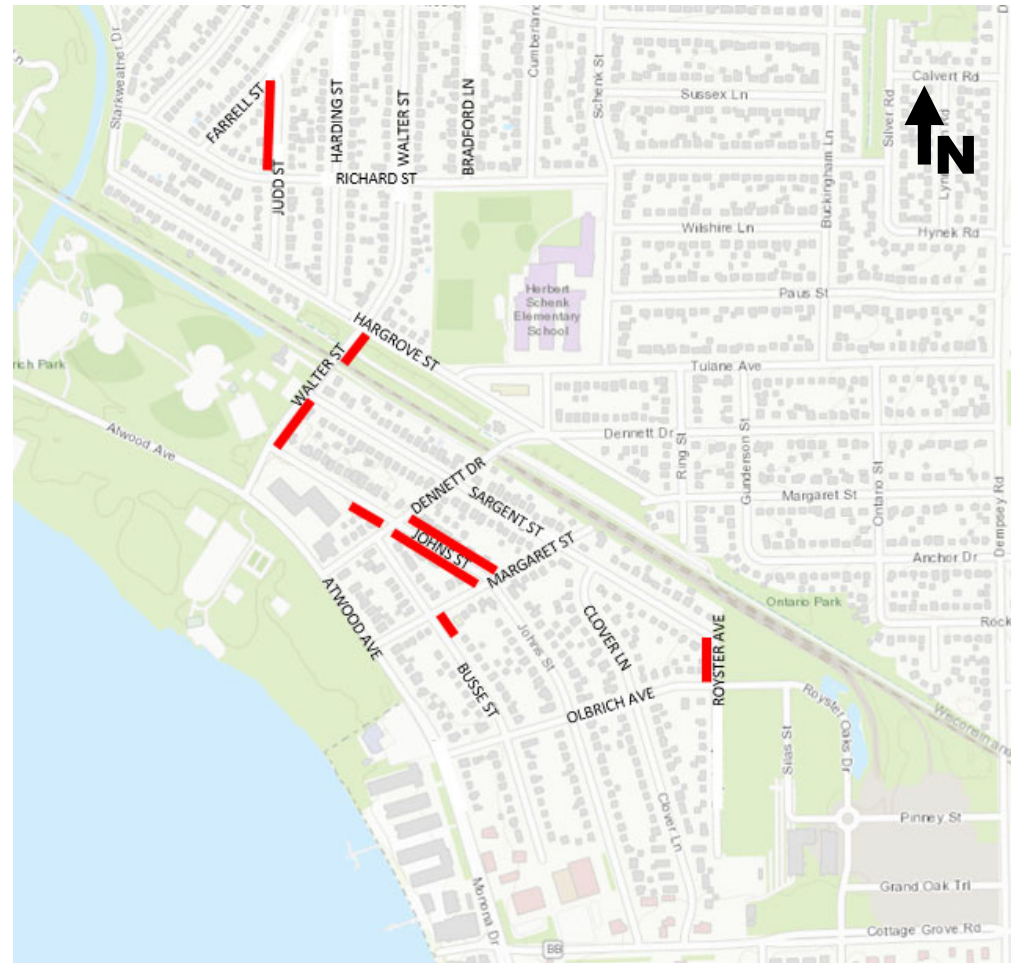
- ▶ What should our streets look like?
- ▶ What values and priorities do we want to shape our streets moving forward?
- ▶ How do and don't our streets serve different communities?
- ▶ Visit [www.cityofmadison.com/talkstreets](http://www.cityofmadison.com/talkstreets) to take Let's Talk Streets surveys and learn more.





# Evaluated Locations

- ▶ Judd Street
  - Farrell to Richard, west side only
- ▶ Walter Street
  - Hargrove to bike path, south side only
  - Sargent to Johns, south side only
- ▶ Busse Street
  - Margaret to southern lot line of 3529 Margaret, east side only
- ▶ Johns Street
  - Dennett to Margaret, both sides
  - Northern lot line of 3526 Dennett to Dennett, west side only
- ▶ Royster Avenue
  - Sargent to Olbrich, west side only



# Impacts and Recommendations

## ➤ Judd Street (Farrell to Richard) – west side

### • Impacts

- 3 terrace trees required to be removed due to construction
  - 15" Paper Birch, 145 Farrell
  - 21" Pine, 145 Farrell
  - 18" Norway Maple, 145 Farrell

- Potential drainage problems due to flat grades

### • Recommendation

- Engineering recommends that sidewalk is not installed with the 2022 project
- Geometric improvements to the Farrell and Judd intersection shall be considered in the future





# Impacts and Recommendations

- Walter Street (Hargrove to bike path & Sargent to Johns) – south side
  - Impacts
    - Walter's south side sidewalk connection will be completed by filling gaps
    - Provide access to bike path from the east side
    - Provide access to Metro bus stop serving routes 3,16,31, and 38 from the west side
    - No tree removals required
  - Recommendation
    - Engineering recommends that sidewalk is installed with the 2022 project.





# Impacts and Recommendations

## ➤ Busse Street (Margaret to southern lot line of 3529 Margaret) – east side

- Impacts
  - Complete sidewalk connection on the east side
  - Mid block crossings to access west side sidewalk will be minimized
  - One terrace tree removal
    - 23" Norway Maple
  - No tree removal required if easement on private property is granted and sidewalk is installed away from tree.
- Recommendation
  - Engineering recommends that sidewalk is installed with the 2022 project.





# Impacts and Recommendations

- Johns Street (Dennett to Margaret, both sides), (Northern lot line of 3526 Dennett to Dennett, west side)
  - Impacts (Dennett to Margaret)
    - 10 tree removals (6 on south side, 4 on north side)
    - Retaining wall required on south side fronting 3542 Margaret
  - Recommendation
    - Engineering will hold recommendation until receiving feedback from residents.
- Impacts (3526 Dennett to Dennett)
  - 2 tree removals
  - Potential drainage issues due to flat grades
- Recommendation
  - Engineering recommends installation of sidewalk with future project if possible.





# Impacts and Recommendations

- Royster Ave. (Sargent to Olbrich, west side)
  - Impacts
    - Complete sidewalk connection on east side of Royster down to Olbrich
    - Ped ramps at intersection will meet A.D.A. standards
    - No tree removals
  - Recommendation
    - Engineering recommends that sidewalk is installed with the 2022 project.



# Scope of Work

- **Sidewalk**
  - Concrete
  - Standard width is 5 feet
  - Typically installed 1 feet away from property line
  - Design per A.D.A. Standards
- **Driveways and Aprons**
  - Replacement required if adjacent to new sidewalk
  - Concrete
  - Installed between the new sidewalk and the roadway pavement
- **Ped Ramps**
  - Replaced throughout project limits if existing do not meet A.D.A. design standards
  - Concrete
  - Installed with Detectable Warning Field
- **Terrace**
  - Disturbed areas will be replaced with 6" of topsoil, seed and matting.





# Scope of Work

- Post construction example





## Construction and Access

- Construction is expected to begin on May, 2022 and will have a duration of 2 months.
- Residents will be notified 2 weeks prior the start of construction.
- Roads will be closed to thru traffic during the project.
- Local traffic will remain open during construction.
- Residential driveways may be closed up to 21 days for concrete installation.
- Allowed working hours are 7:00 am to 7:00 pm Monday – Saturday and 10:00 am to 7:00 pm Sundays.
  - Limited weekend work anticipated
- On street parking will not be allowed during construction hours.

## Construction and Access

- Whole terrace/Right-of-way will get disturbed.
  - Please remove any plantings, raised beds, structures, stone landscaping, retaining walls, pavers, railings, etc. that you wish to save from the terrace prior to construction.
  - Contractor will not replace/reinstall these items.
  - Disturbed areas will be restored with topsoil, seed, and matting.

# Assessment Policy and Costs

- Assessment cost per property will vary depending on frontage length, and the quantity of assessable items.
- Corner lots single or two-family residential will receive 50% assessments for sidewalks.
- Preliminary estimated assessments mailed prior to project start.
- Final assessments will be calculated following construction using measured quantities and actual bid prices.
- Final billing will be sent the year after construction completion (2023 for this project).
- Assessments are payable in lump sum or in up to 8 installments at current interest rate (2% )
- Qualified loans available dependent on income.
- Residents can contact the project manager for additional details.



# Assessment Policy and Costs

- Assessable Items

Item	Property Owner Share	City Share
New Sidewalk**	100%	0%
Driveway Apron Replacement	50%	50%

\*\*Safe routes grant would cover 50% of costs to install new sidewalks





# Assessment Policy and Costs

## ▶ Assessment Example

- No corner lot – Factor = 1.0
- Corner lot and Single or Two Family residential property – Factor = 0.5
- Corner lot but not Single or Two Family residential property – Factor = 1.0

Frontage L.F.	Replace Drive Apron @ \$6.00 per S.F.		(100% Assessable) Construct New Sidewalk @ \$40.00 per L.F.				Total Assesst.
	S.F.	Cost	Comer Factor	Safe Routes Factor	L.F.	Cost	
80.00 - Johns St.	150.00	\$900.00	1.0	0.5	80.00	\$1,600.00	\$2,500.00
120.75 - Busse St. 43.60 - Margaret St.	0.00	\$0.00	1.0	0.5	120.75	\$2,415.00	\$2,415.00
100.00 - Royster Ave. 45.00 - Olbrich Ave.	150.00	\$900.00	0.5	0.5	100.00	\$1,000.00	\$1,900.00
Totals	300.00	\$1,800.00	-	-	300.75	\$5,015.00	\$6,815.00



# Assessment Policy and Costs

- Assessment Calculator Example

8 Years				
Interest Rate	2.00%			
Assessment =	\$2,500.00			
Number of Years =	8			
	Remaining Principal	Interest Payment	Principal Payment	Total Payment
1	\$2,500.00	\$50.00	\$312.50	\$362.50
2	\$2,187.50	\$43.75	\$312.50	\$356.25
3	\$1,875.00	\$37.50	\$312.50	\$350.00
4	\$1,562.50	\$31.25	\$312.50	\$343.75
5	\$1,250.00	\$25.00	\$312.50	\$337.50
6	\$937.50	\$18.75	\$312.50	\$331.25
7	\$625.00	\$12.50	\$312.50	\$325.00
8	\$312.50	\$6.25	\$312.50	\$318.75
Total		\$225.00	\$2,500.00	\$2,725.00
		Number of Years =	8	
		Average Payment =	\$340.63	



# Anticipated Project Schedule

- 10/27/2021: Transportation Commission (held virtually)
- 2/4/2022: Mail Estimated Assessments, Public Hearing Notice
- 2/16/2022: BPW Public Hearing (held virtually)
- 3/1/2022: Common Council Hearing (held virtually)
- 3/10/2022: Advertise for Bids
- 5/16/2022: Begin Construction
- 7/15/2022: Estimated End Construction



# Contact Information & Resources

## ➤ City Staff

- Fadi El Musa, Project Manager, (608) 243-5214, [felmusagonzalez@cityofmadison.com](mailto:felmusagonzalez@cityofmadison.com)
- Renee Callaway, Ped Bike Administrator, (608) 266-6225, [recallaway@cityofmadison.com](mailto:recallaway@cityofmadison.com)

## ➤ Project Webpage: [cityofmadison.com/engineering/projects/new-sidewalk-installation-2022](https://cityofmadison.com/engineering/projects/new-sidewalk-installation-2022)

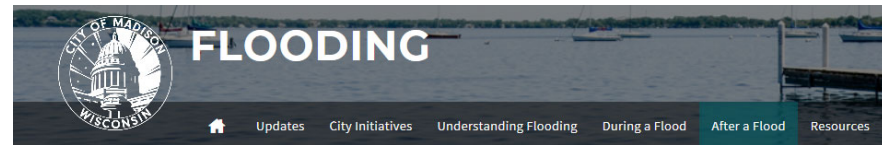
- Sign-up for project email updates on the website
  - Updates on closures & work progress will be posted to the project website

## ➤ Facebook – City of Madison Engineering

# Report Flooding and Damage

- ▶ Please report Non-Emergency issues to the following link:

[www.cityofmadison.com/flooding/report/](http://www.cityofmadison.com/flooding/report/)



[City of Madison](#) / [Flooding](#) / Report Flooding

## Report Flooding & Damage

Please use this form to report **Non-Emergency** issues only.

- **Emergencies:** If you or someone else is at risk or needs help, or if the maintenance item is an emergency condition, please call **911**.
- **Stormwater Emergencies:** If clogged grates or blocked waterways are causing an imminent threat to your property, please call (608) 266-4430.

Please use this form to report flooding and damage to private property or public lands, including City parks. This form is for reporting flooding in the **City of Madison** only.

We will use this information to prioritize repairs and to plan for upgrades to our City stormwater infrastructure to reduce flooding damage in the future. Thank you for your time.

### Flooding Type

Flooding Type \* *required*

- Home or Building (Private Property)
- Street Flooding
- Park, Bike Path, Pond or Greenway, or Other

NEXT

CITY OF **MADISON**





# Questions/Input

CITY OF **MADISON**

