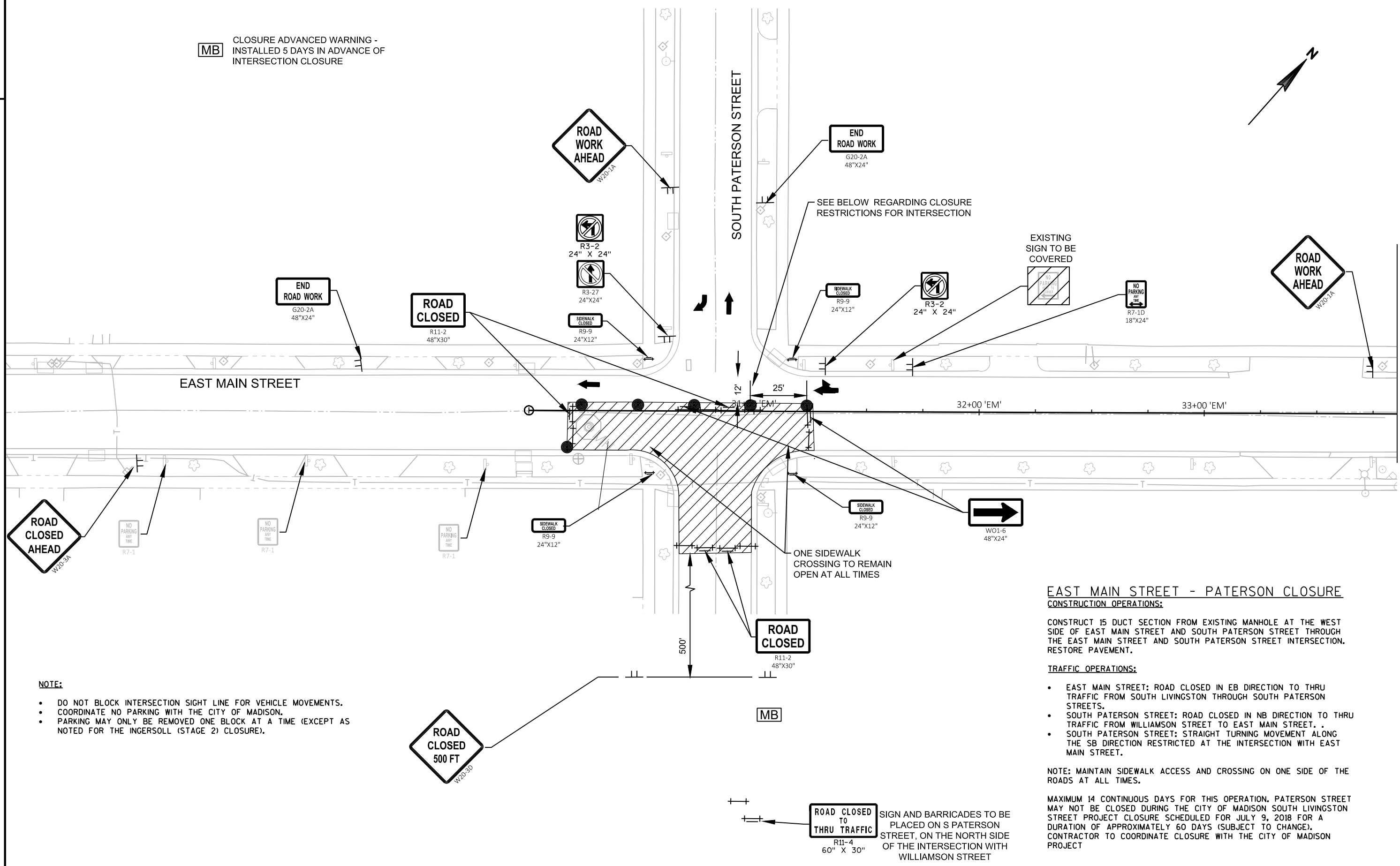


MB CLOSURE ADVANCED WARNING -
INSTALLED 5 DAYS IN ADVANCE OF
INTERSECTION CLOSURE



- NOTE:**
- DO NOT BLOCK INTERSECTION SIGHT LINE FOR VEHICLE MOVEMENTS.
 - COORDINATE NO PARKING WITH THE CITY OF MADISON.
 - PARKING MAY ONLY BE REMOVED ONE BLOCK AT A TIME (EXCEPT AS NOTED FOR THE INGERSOLL (STAGE 2) CLOSURE).

EAST MAIN STREET - PATERSON CLOSURE
CONSTRUCTION OPERATIONS:

CONSTRUCT 15 DUCT SECTION FROM EXISTING MANHOLE AT THE WEST SIDE OF EAST MAIN STREET AND SOUTH PATERSON STREET THROUGH THE EAST MAIN STREET AND SOUTH PATERSON STREET INTERSECTION. RESTORE PAVEMENT.

TRAFFIC OPERATIONS:

- EAST MAIN STREET: ROAD CLOSED IN EB DIRECTION TO THRU TRAFFIC FROM SOUTH LIVINGSTON THROUGH SOUTH PATERSON STREETS.
- SOUTH PATERSON STREET: ROAD CLOSED IN NB DIRECTION TO THRU TRAFFIC FROM WILLIAMSON STREET TO EAST MAIN STREET.
- SOUTH PATERSON STREET: STRAIGHT TURNING MOVEMENT ALONG THE SB DIRECTION RESTRICTED AT THE INTERSECTION WITH EAST MAIN STREET.

NOTE: MAINTAIN SIDEWALK ACCESS AND CROSSING ON ONE SIDE OF THE ROADS AT ALL TIMES.

MAXIMUM 14 CONTINUOUS DAYS FOR THIS OPERATION. PATERSON STREET MAY NOT BE CLOSED DURING THE CITY OF MADISON SOUTH LIVINGSTON STREET PROJECT CLOSURE SCHEDULED FOR JULY 9, 2018 FOR A DURATION OF APPROXIMATELY 60 DAYS (SUBJECT TO CHANGE). CONTRACTOR TO COORDINATE CLOSURE WITH THE CITY OF MADISON PROJECT

ROAD CLOSED TO THRU TRAFFIC
R11-4
60" X 30"

SIGN AND BARRICADES TO BE PLACED ON S PATERSON STREET, ON THE NORTH SIDE OF THE INTERSECTION WITH WILLIAMSON STREET