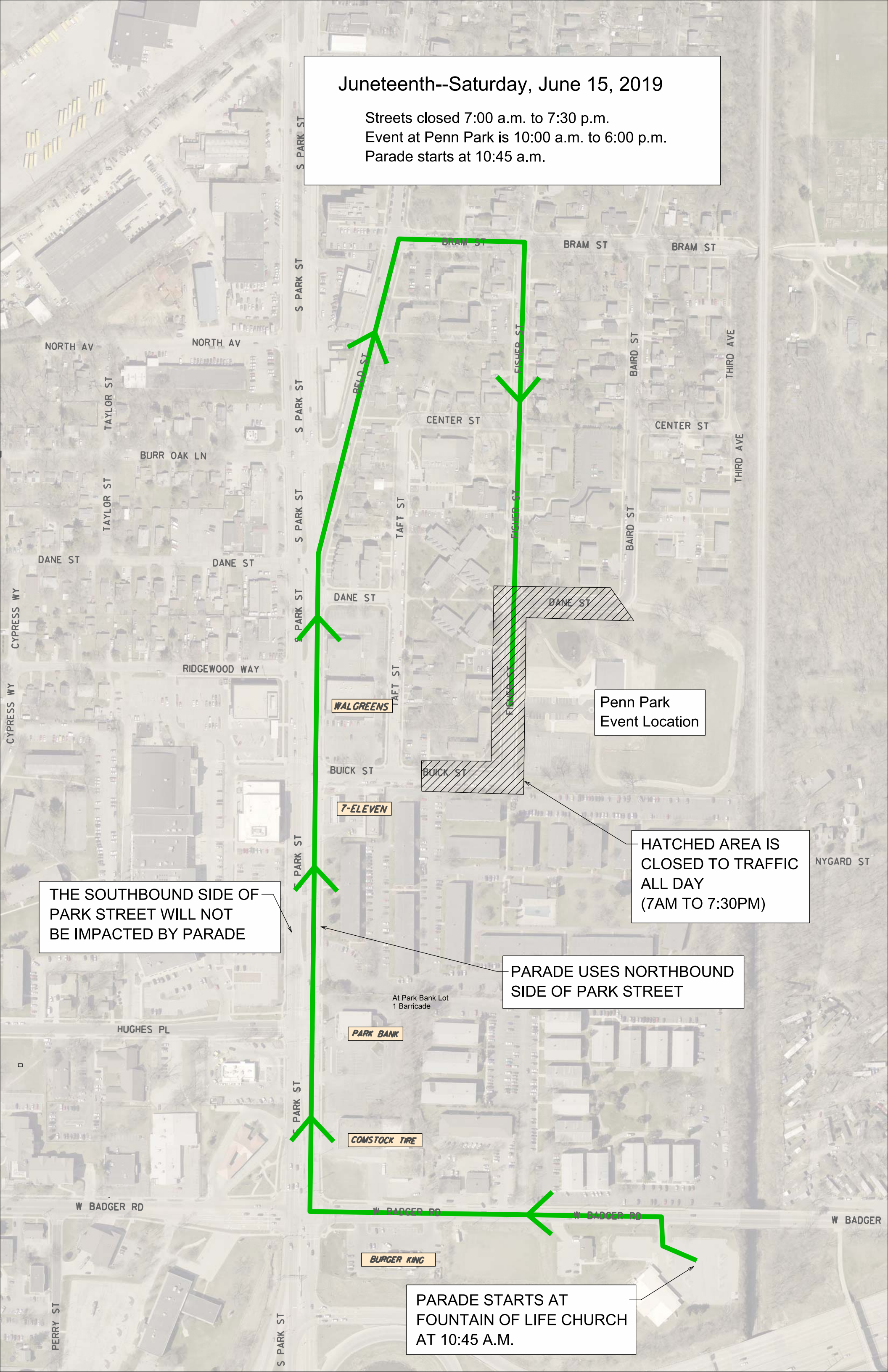


**Juneteenth--Saturday, June 15, 2019**

Streets closed 7:00 a.m. to 7:30 p.m.  
Event at Penn Park is 10:00 a.m. to 6:00 p.m.  
Parade starts at 10:45 a.m.



THE SOUTHBOUND SIDE OF PARK STREET WILL NOT BE IMPACTED BY PARADE

PARADE USES NORTHBOUND SIDE OF PARK STREET

HATCHED AREA IS CLOSED TO TRAFFIC ALL DAY (7AM TO 7:30PM)

PARADE STARTS AT FOUNTAIN OF LIFE CHURCH AT 10:45 A.M.

Penn Park Event Location

WALGREENS

7-ELEVEN

PARK BANK

COMSTOCK TIRE

BURGER KING

At Park Bank Lot 1 Barricade