

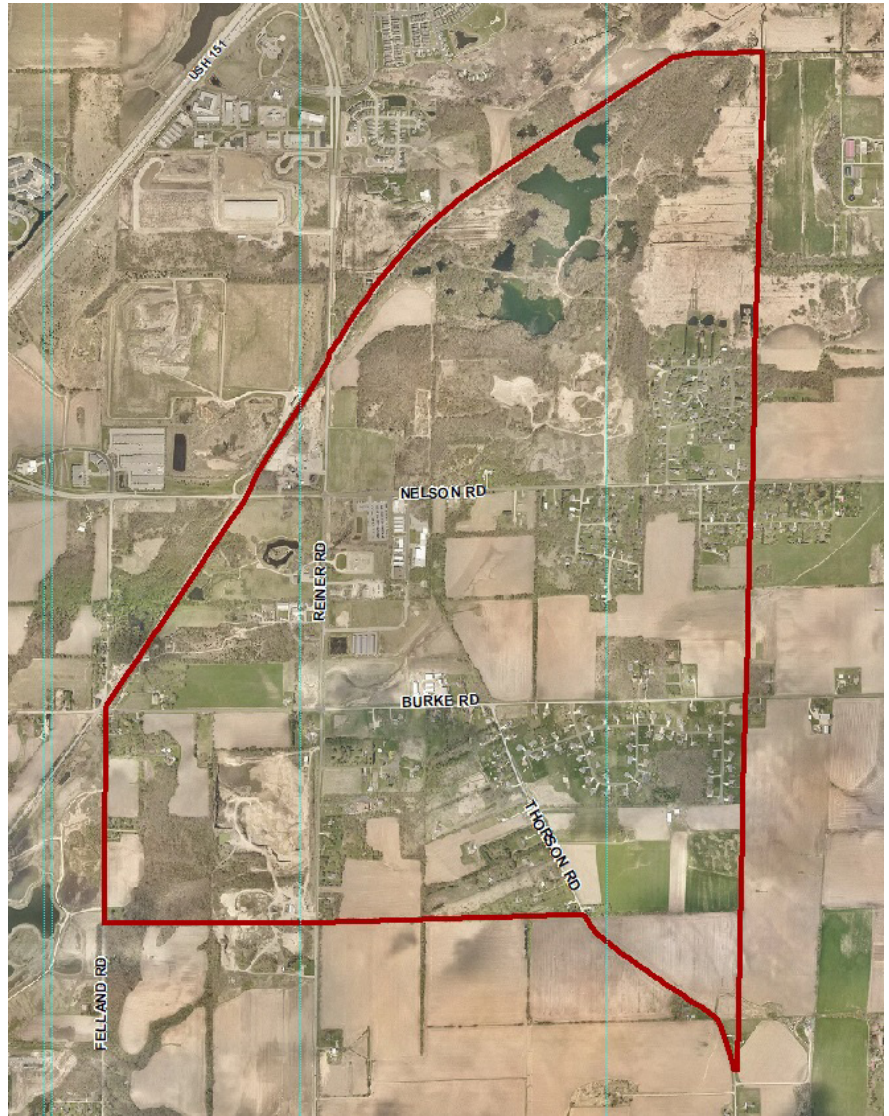
# Reiner Neighborhood Development Plan

November 18, 2019



The City of Madison's Planning Division will soon begin a process to prepare the Reiner Neighborhood Development Plan. The Planning Area covers approximately 1,500 acres generally bounded by Felland Road, the Wisconsin & Southern railroad, the Burke Town line and Thorson Road.

The Plan will provide detailed recommendations regarding land uses, transportation and public utilities and services.



## What is a Neighborhood Development Plan?

The City of Madison prepares Neighborhood Development Plans (NDPs) to guide the future growth and development in undeveloped areas on the City's periphery. NDPs include detailed recommendations regarding land use, the transportation network, open space, extension of public utilities and services, and more.

## Project Contact

Urvashi Martin, AICP  
Planner  
City of Madison Planning Division  
608-267-8735  
[umartin@cityofmadison.com](mailto:umartin@cityofmadison.com)

## Website

Get project information and sign up for email updates at:  
[www.cityofmadison.com/ReinerNDP](http://www.cityofmadison.com/ReinerNDP)