

BURR JONES PARK - SITE IMPROVEMENTS

City of Madison
 Department of Public Works
PARKS DIVISION

City-County Building, Suite 104
 210 Martin Luther King, Jr. Blvd.
 Madison, WI 53703

play
**MADISON
 PARKS**

PROJECT:

**BURR JONES
 PARK SITE
 IMPROVEMENTS**

**BURR JONES PARK
 1820 E. WASHINGTON AVE.
 MADISON, WI 53704**

Although every effort has been made in preparing these plans and checking them for accuracy, the contractor and subcontractors must check all details and dimensions of their trade and be responsible for the same.

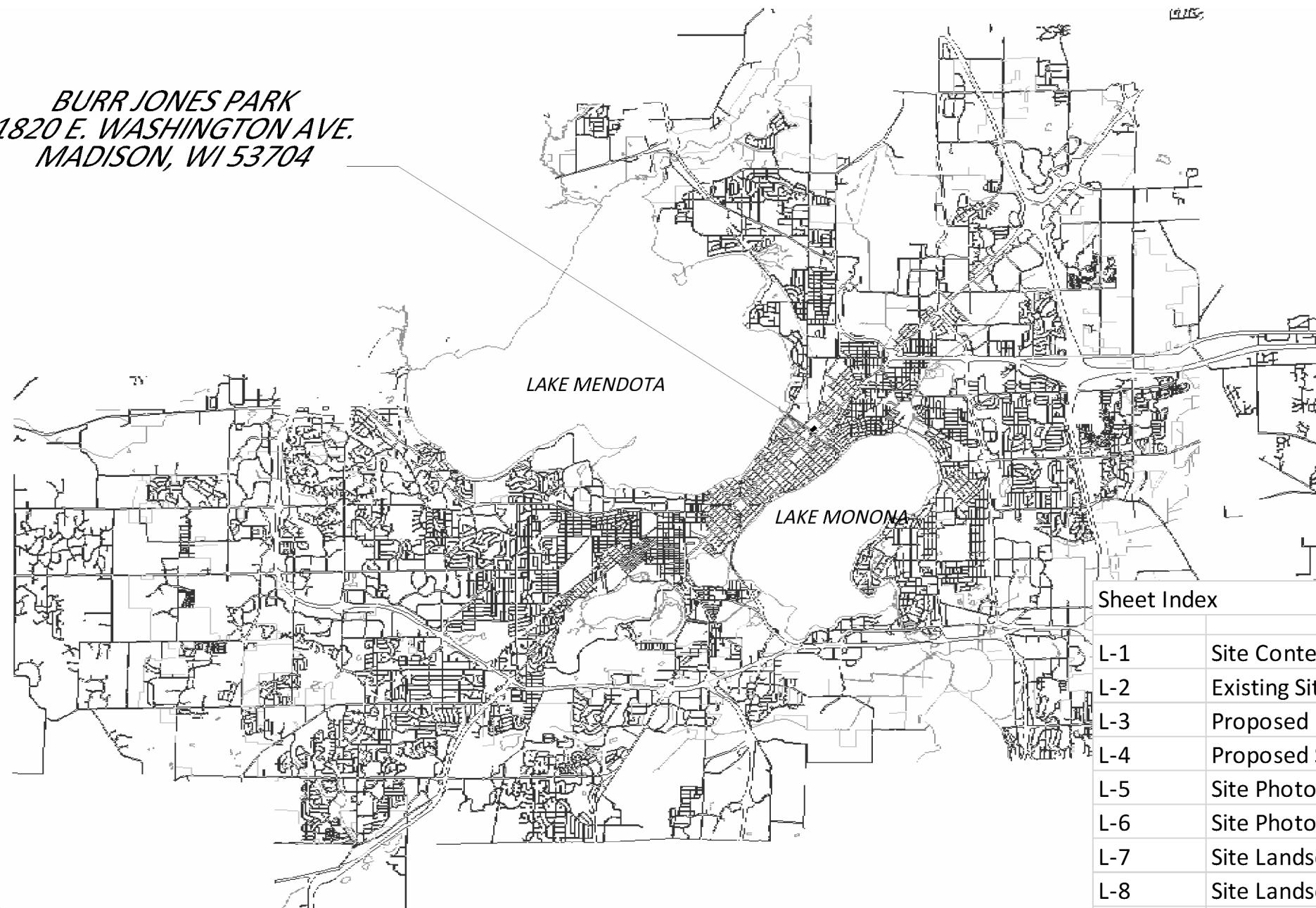
ITEM	DATE
Drawn by:	xx-xx-xxxx
Approved by:	xx-xx-xxxx

PUBLIC WORKS PROJECT #:
8359

SHEET TITLE:

SHEET NUMBER:

**BURR JONES PARK
 1820 E. WASHINGTON AVE.
 MADISON, WI 53704**



Sheet Index	
L-1	Site Context
L-2	Existing Site
L-3	Proposed Improvements
L-4	Proposed Site Grading
L-5	Site Photos
L-6	Site Photos
L-7	Site Landscape Plan
L-8	Site Landscape Plan - Parking Lot
L-9	Proposed Fence



City of Madison
 Department of Public Works
PARKS DIVISION

City-County Building, Suite 104
 210 Martin Luther King, Jr. Blvd.
 Madison, WI 53703

play
**MADISON
 PARKS**

Graphical Scale
 0 100 ft

PROJECT:
**BURR JONES
 PARK SITE
 IMPROVEMENTS**

**BURR JONES PARK
 1820 E. WASHINGTON AVE.
 MADISON, WI 53704**

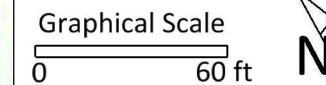
Although every effort has been made in preparing these plans and checking them for accuracy, the contractor and subcontractors must check all details and dimensions of their trade and be responsible for the same.

ITEM	DATE
Drawn by:	XX-XX-XXXX
Approved by:	XX-XX-XXXX

PUBLIC WORKS PROJECT #:
8359

SHEET TITLE:
SITE CONTEXT

SHEET NUMBER:
L-1



PROJECT:
**BURR JONES
 PARK SITE
 IMPROVEMENTS**

**BURR JONES PARK
 1820 E. WASHINGTON AVE.
 MADISON, WI 53704**

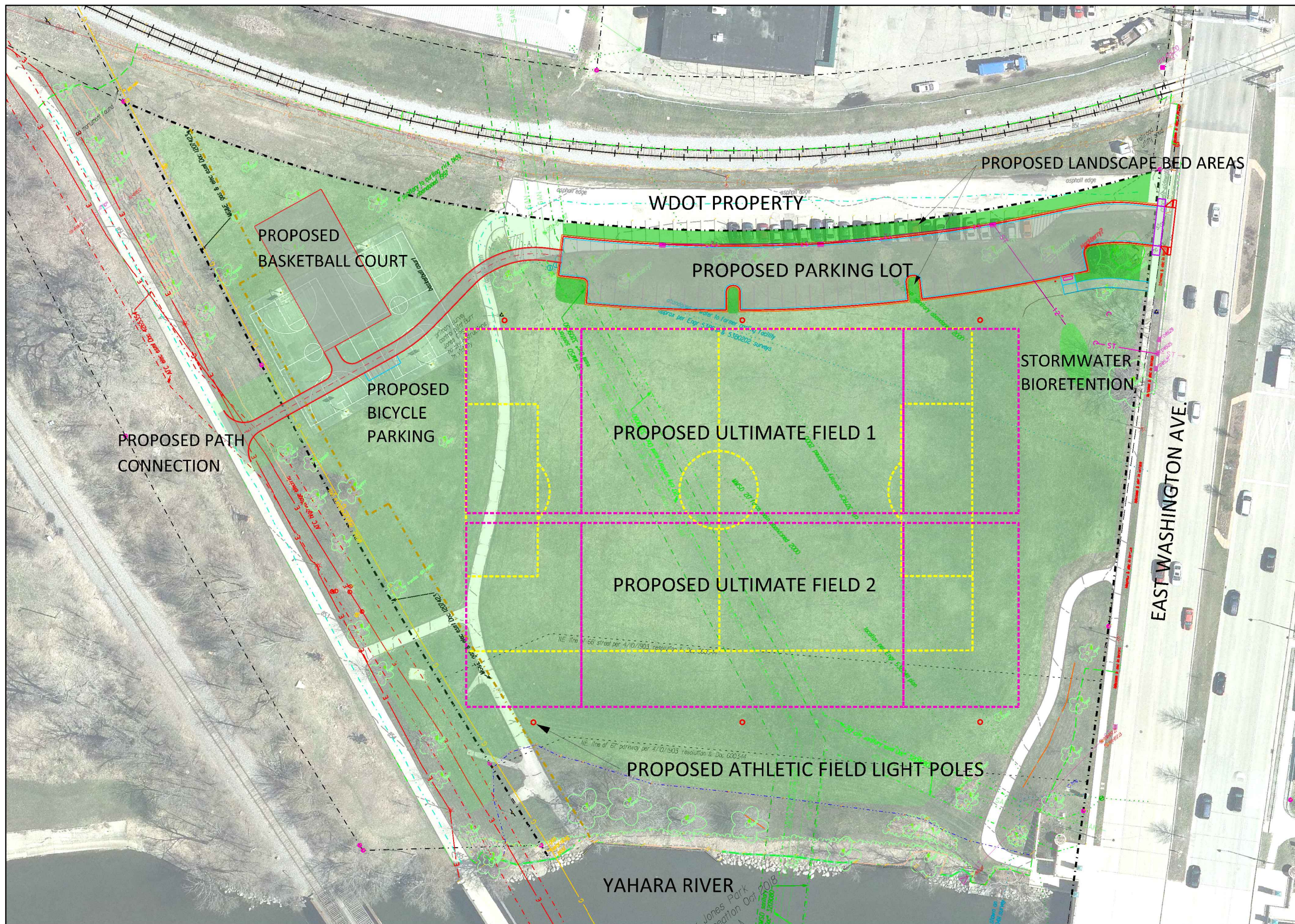
Although every effort has been made in preparing these plans and checking them for accuracy, the contractor and subcontractors must check all details and dimensions of their trade and be responsible for the same.

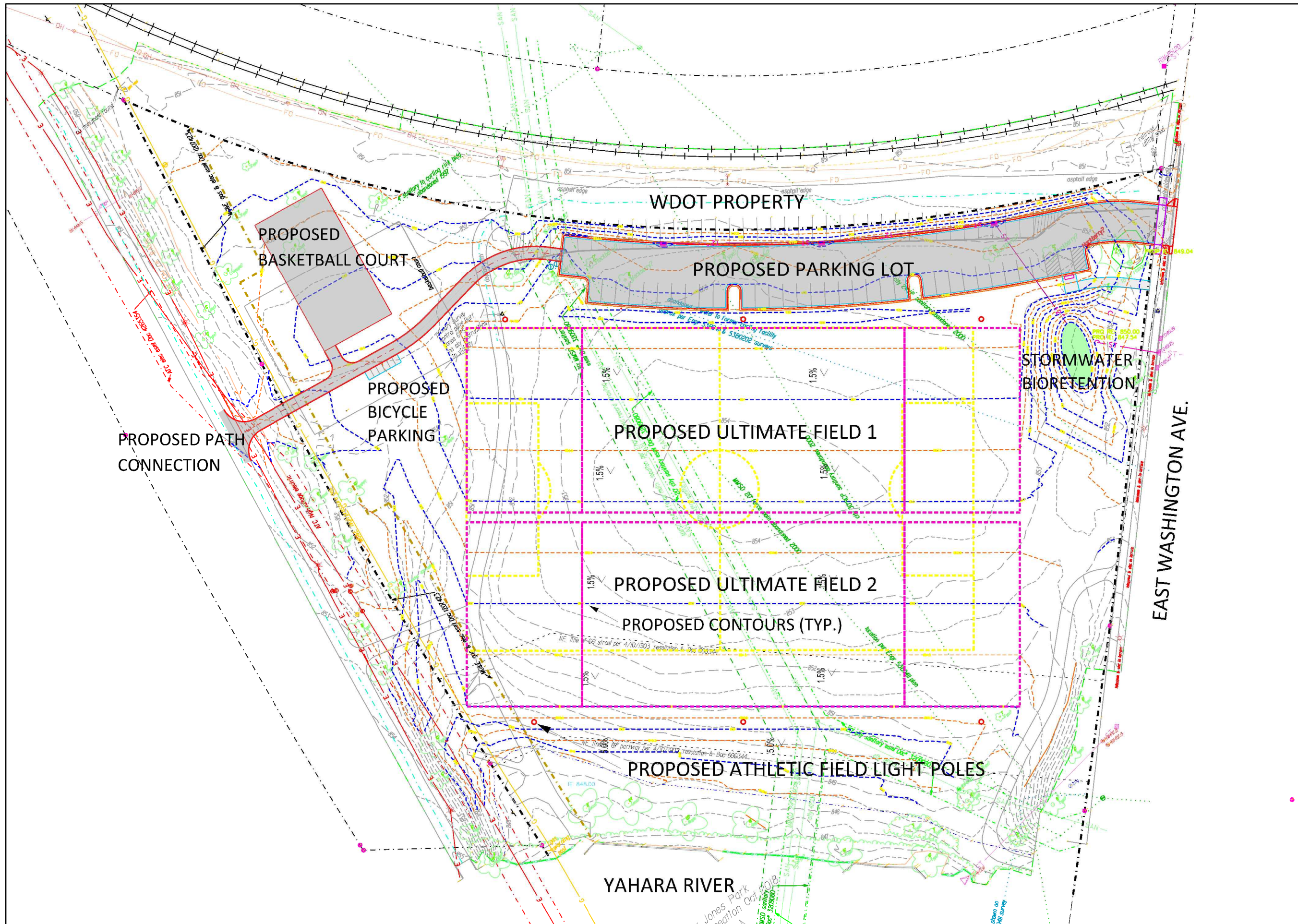
ITEM	DATE
Drawn by:	XX-XX-XXXX
Approved by:	XX-XX-XXXX

PUBLIC WORKS PROJECT #:
8359

SHEET TITLE:
**PROPOSED
 IMPROVEMENTS**

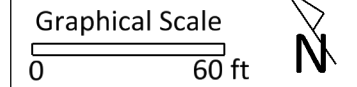
SHEET NUMBER:
L-3





City of Madison
 Department of Public Works
PARKS DIVISION

City-County Building, Suite 104
 210 Martin Luther King, Jr. Blvd.
 Madison, WI 53703



PROJECT:
**BURR JONES
 PARK SITE
 IMPROVEMENTS**

**BURR JONES PARK
 1820 E. WASHINGTON AVE.
 MADISON, WI 53704**

Although every effort has been made in preparing these plans and checking them for accuracy, the contractor and subcontractors must check all details and dimensions of their trade and be responsible for the same.

ITEM	DATE
Drawn by:	xx-xx-xxxx
Approved by:	xx-xx-xxxx

PUBLIC WORKS PROJECT #:
8359

SHEET TITLE:
**PROPOSED SITE
 GRADING**

SHEET NUMBER:
L-4

City of Madison
 Department of Public Works
PARKS DIVISION

City-County Building, Suite 104
 210 Martin Luther King, Jr. Blvd.
 Madison, WI 53703



PROJECT:

**BURR JONES
 PARK SITE
 IMPROVEMENTS**

**BURR JONES PARK
 1820 E. WASHINGTON AVE.
 MADISON, WI 53704**

Although every effort has been made in preparing these plans and checking them for accuracy, the contractor and subcontractors must check all details and dimensions of their trade and be responsible for the same.

ITEM	DATE
Drawn by:	xx-xx-xxxx
Approved by:	xx-xx-xxxx

PUBLIC WORKS PROJECT #:
8359

SHEET TITLE:
SITE PHOTOS

SHEET NUMBER:
L-5



EXISTING PARKING LOT FACING NORTH



EXISTING BASKETBALL COURTS FACING NORTH



EXISTING ATHLETIC FIELD AREA FACING EAST FROM YAHARA RIVER



EXISTING PATH FACING WEST



EXISTING ATHLETIC FIELD FACING SOUTH



EXISTING PARKING LOT FACING EAST



EXISTING PARKING LOT FACING SOUTH



YAHARA RIVER SHORE

City of Madison
 Department of Public Works
PARKS DIVISION

City-County Building, Suite 104
 210 Martin Luther King, Jr. Blvd.
 Madison, WI 53703



PROJECT:

*BURR JONES
 PARK SITE
 IMPROVEMENTS*

*BURR JONES PARK
 1820 E. WASHINGTON AVE.
 MADISON, WI 53704*

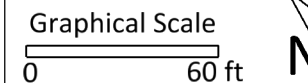
Although every effort has been made in preparing these plans and checking them for accuracy, the contractor and subcontractors must check all details and dimensions of their trade and be responsible for the same.

ITEM	DATE
Drawn by:	xx-xx-xxxx
Approved by:	xx-xx-xxxx

PUBLIC WORKS PROJECT #:
8359

SHEET TITLE:
SITE PHOTOS

SHEET NUMBER:
L-6



PROJECT:
**BURR JONES
 PARK SITE
 IMPROVEMENTS**

**BURR JONES PARK
 1820 E. WASHINGTON AVE.
 MADISON, WI 53704**

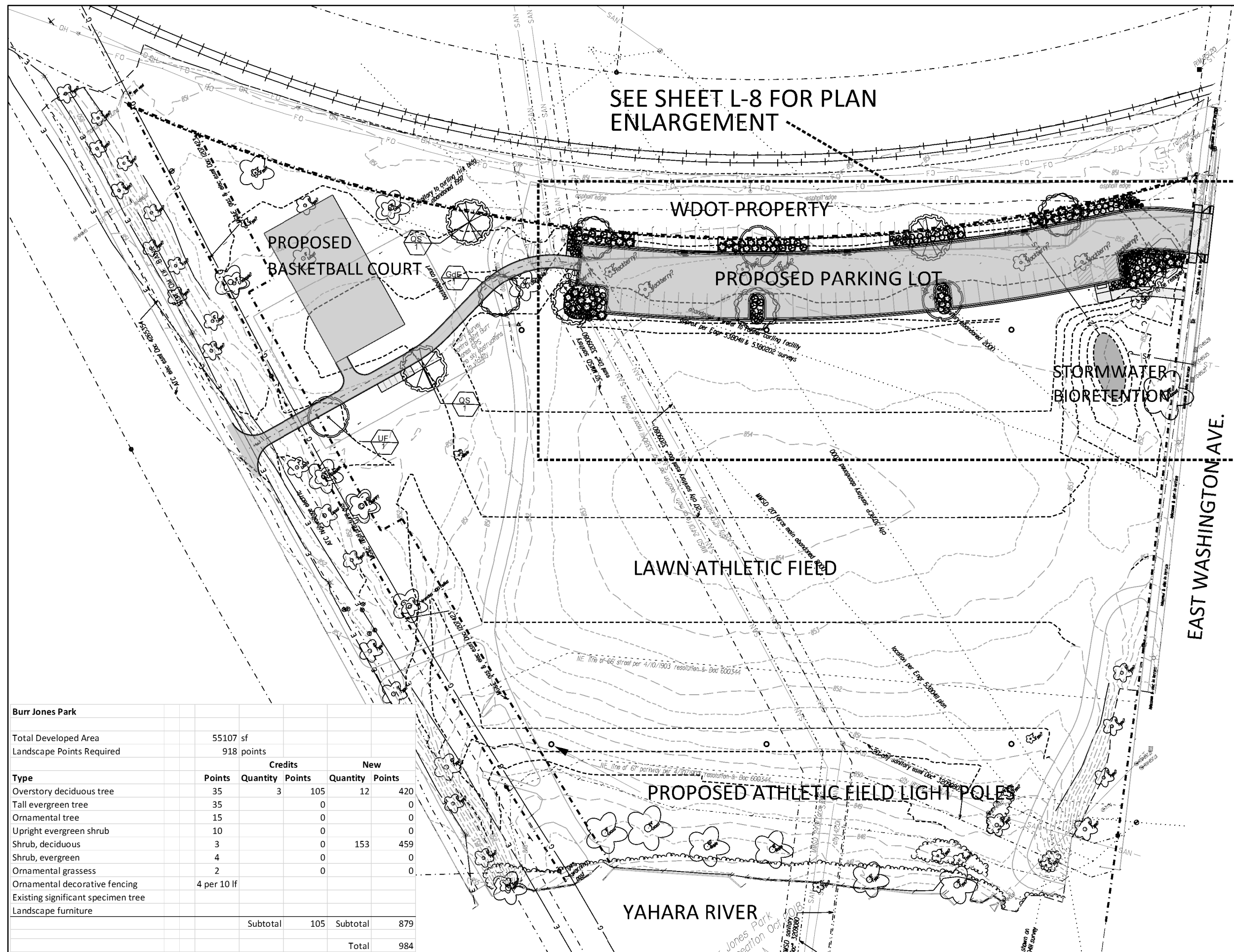
Although every effort has been made in preparing these plans and checking them for accuracy, the contractor and subcontractors must check all details and dimensions of their trade and be responsible for the same.

ITEM	DATE
Drawn by:	xx-xx-xxxx
Approved by:	xx-xx-xxxx

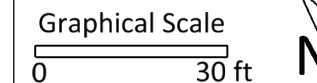
PUBLIC WORKS PROJECT #:
8359

SHEET TITLE:
**SITE LANDSCAPE
 PLAN**

SHEET NUMBER:
L-7



Burr Jones Park					
Total Developed Area		55107 sf			
Landscape Points Required		918 points			
Type	Points	Credits		New	
		Quantity	Points	Quantity	Points
Overstory deciduous tree	35	3	105	12	420
Tall evergreen tree	35		0		0
Ornamental tree	15		0		0
Upright evergreen shrub	10		0		0
Shrub, deciduous	3		0	153	459
Shrub, evergreen	4		0		0
Ornamental grasses	2		0		0
Ornamental decorative fencing	4 per 10 lf				
Existing significant specimen tree					
Landscape furniture					
		Subtotal	105	Subtotal	879
			Total		984



PROJECT:
**BURR JONES
 PARK SITE
 IMPROVEMENTS**

BURR JONES PARK
 1820 E. WASHINGTON AVE.
 MADISON, WI 53704

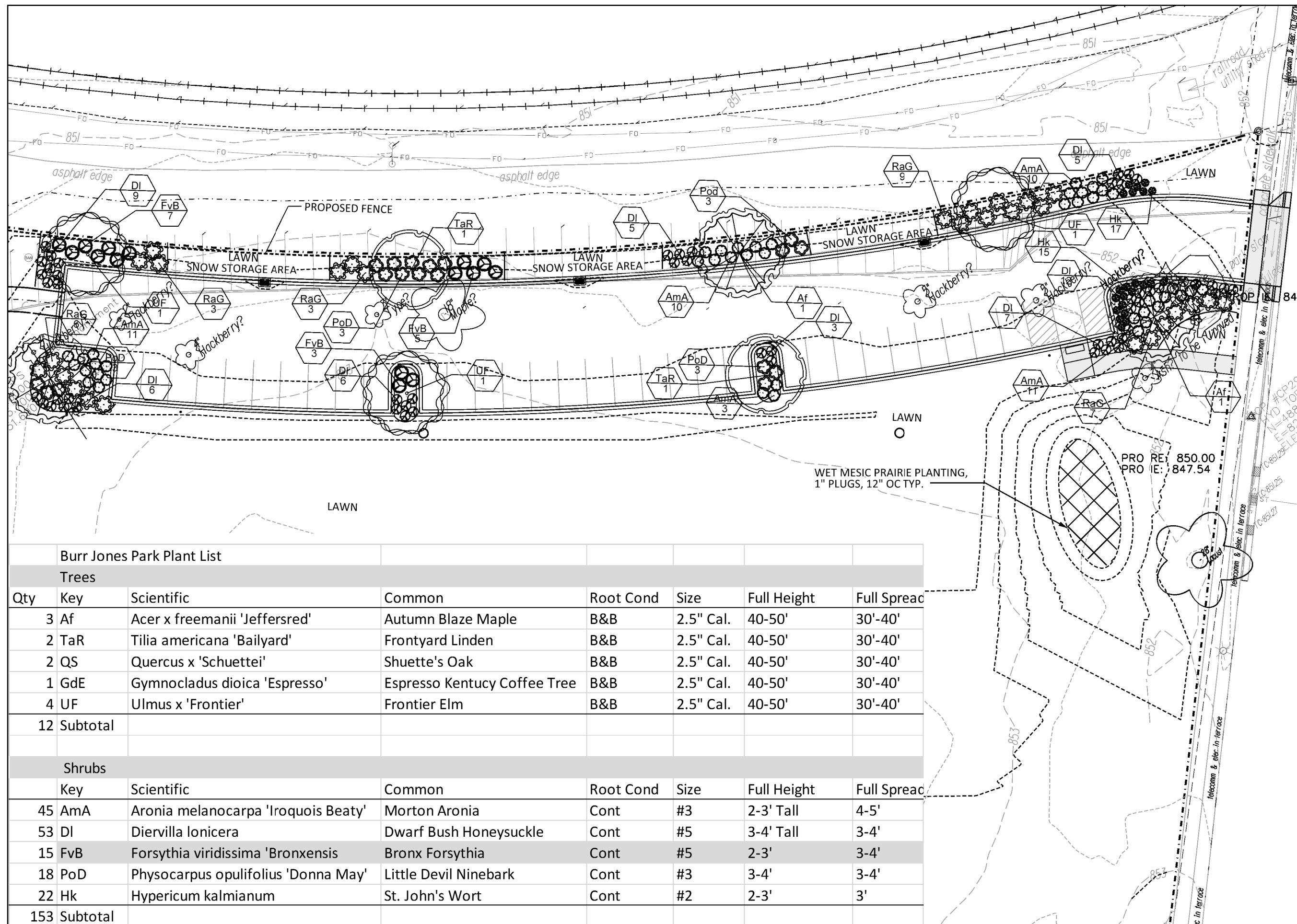
Although every effort has been made in preparing these plans and checking them for accuracy, the contractor and subcontractors must check all details and dimensions of their trade and be responsible for the same.

ITEM DATE
 Drawn by: XX-XX-XXXX
 Approved by: XX-XX-XXXX

PUBLIC WORKS PROJECT #:
8359

SHEET TITLE:
**LANDSCAPE PLAN -
 PARKING LOT**

SHEET NUMBER:
L-8



Burr Jones Park Plant List

Trees							
Qty	Key	Scientific	Common	Root Cond	Size	Full Height	Full Spread
3	Af	Acer x freemanii 'Jeffersred'	Autumn Blaze Maple	B&B	2.5" Cal.	40-50'	30'-40'
2	TaR	Tilia americana 'Bailyard'	Frontyard Linden	B&B	2.5" Cal.	40-50'	30'-40'
2	QS	Quercus x 'Schuettei'	Shuette's Oak	B&B	2.5" Cal.	40-50'	30'-40'
1	GdE	Gymnocladus dioica 'Espresso'	Espresso Kentucky Coffee Tree	B&B	2.5" Cal.	40-50'	30'-40'
4	UF	Ulmus x 'Frontier'	Frontier Elm	B&B	2.5" Cal.	40-50'	30'-40'
12	Subtotal						
Shrubs							
	Key	Scientific	Common	Root Cond	Size	Full Height	Full Spread
45	AmA	Aronia melanocarpa 'Iroquois Beaty'	Morton Aronia	Cont	#3	2-3' Tall	4-5'
53	DI	Diervilla lonicera	Dwarf Bush Honeysuckle	Cont	#5	3-4' Tall	3-4'
15	FvB	Forsythia viridissima 'Bronxensis'	Bronx Forsythia	Cont	#5	2-3'	3-4'
18	PoD	Physocarpus opulifolius 'Donna May'	Little Devil Ninebark	Cont	#3	3-4'	3-4'
22	Hk	Hypericum kalmianum	St. John's Wort	Cont	#2	2-3'	3'
153	Subtotal						

TLC for LED® - Total Light Control



For nearly a decade, Musco has been testing the Light Emitting Diode (LED) light source and applying it in projects in which it was the best option. While LED saved energy, for a typical recreational facility the hours of operation weren't great enough to offset the higher cost.

With our Total Light Control—TLC for LED® technology, we've paired our expertise in light control with the advancing output of LED to the point where it's a cost-effective option for recreational facilities.

The result is a system that makes Musco's great lighting even better.

Better for Players... who want to perform their best and be able to track the entire flight of the ball.

Better for Neighbors... who don't want glare in or around their homes or lights left on when not in use.

Better for the Night Sky... with bright, uniform light directed onto the field and not spilling above it.



Trojan Park - 2016 NRPA Parks Build Community



LoConte Family Field - Clemson University

Burr Jones Park

Madison, WI

Lighting System

Pole / Fixture Summary						
Pole ID	Pole Height	Mtg Height	Fixture Qty	Luminaire Type	Load	Circuit
S1, S3-S4, S6	70'	70'	4	TLC-LED-1150	4.60 kW	A
S2, S5	70'	70'	6	TLC-LED-1150	6.90 kW	A
8			34		34.60 kW	

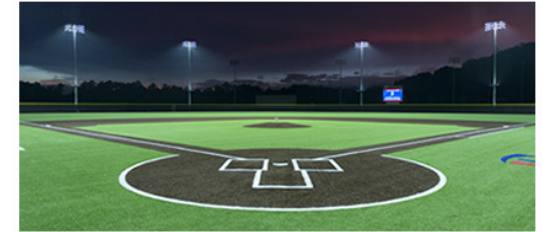
Circuit Summary			
Circuit	Description	Load	Fixture Qty
A	Soccer	32.2 kW	28
B	Basketball	2.4 kW	6

Fixture Type Summary							
Type	Source	Wattage	Lumens	L90	L80	L70	Quantity
TLC-LED-1150	LED 5700K - 75 CRI	1150W	121,000	>81,000	>81,000	>81,000	28
TLC-LED-400	LED 5700K - 75 CRI	400W	46,500	>81,000	>81,000	>81,000	6

Light Level Summary

Calculation Grid Summary								
Grid Name	Calculation Metric	Illumination					Circuits	Fixture Qty
		Ave	Min	Max	Max/Min	Ave/Min		
Blanket Grid	Horizontal	5.75	0	47	0.00		A,B	34
Soccer	Horizontal Illuminance	32.3	26	44	1.73	1.24	A	28
Ultimate Field 1	Horizontal Illuminance	33.5	25	44	1.73	1.34	A	28
Ultimate Field 2	Horizontal Illuminance	32.1	23	40	1.73	1.39	A	28

From Hometown to Professional



We Make It Happen.

Not to be reproduced in whole or part without the written consent of Musco Sports Lighting, LLC. ©1981, 2018 Musco Sports Lighting, LLC.

EQUIPMENT LIST FOR AREAS SHOWN

Pole				Luminaires				
QTY	LOCATION	SIZE	GRADE ELEVATION	MOUNTING HEIGHT	LUMINAIRE TYPE	QTY / POLE	THIS GRID	OTHER GRIDS
4	S1, S3-S4 S6	70'	-	70'	TLC-LED-1150	4	4	0
2	S2, S5	70'	-	70'	TLC-LED-1150	6	6	0
6	TOTALS					28	28	0

Burr Jones Park

Madison, WI

GRID SUMMARY

Name: Soccer
Size: 330' x 210'
Spacing: 30.0' x 30.0'
Height: 3.0' above grade

ILLUMINATION SUMMARY

MAINTAINED HORIZONTAL FOOTCANDLES

Entire Grid	
Guaranteed Average:	30
Scan Average:	32.28
Maximum:	44
Minimum:	26
Avg / Min:	1.26
Guaranteed Max / Min:	2.5
Max / Min:	1.73
UG (adjacent pts):	1.39
CU:	0.65
No. of Points:	77

LUMINAIRE INFORMATION

Color / CRI: 5700K - 75 CRI
Luminaire Output: 121,000 / 52,000 lumens
No. of Luminaires: 28
Total Load: 32.2 kW

Luminaire Type	Lumen Maintenance		
	L90 hrs	L80 hrs	L70 hrs
TLC-LED-1150	>81,000	>81,000	>81,000
TLC-BT-575	>81,000	>81,000	>81,000

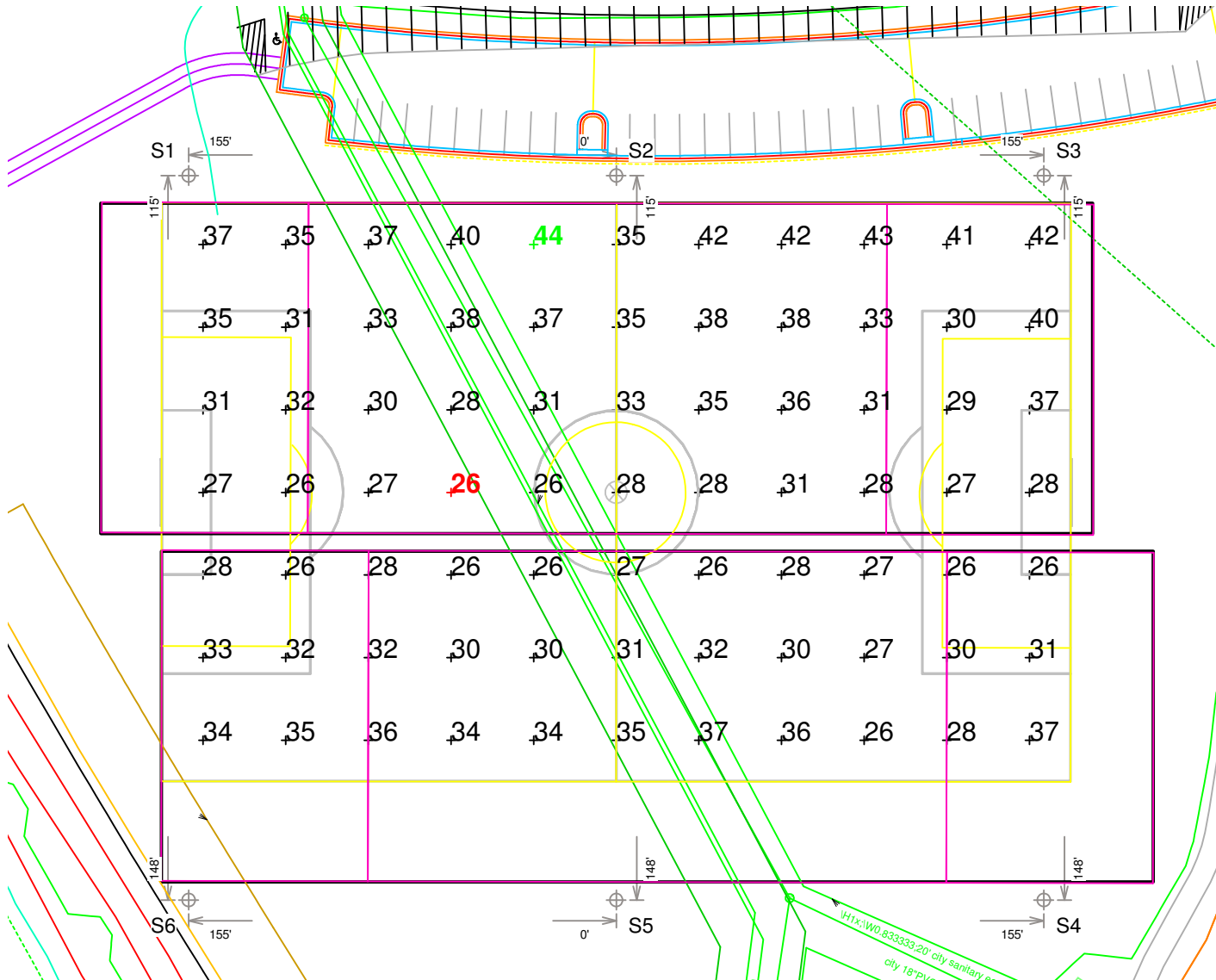
Reported per TM-21-11. See luminaire datasheet for details.

Guaranteed Performance: The ILLUMINATION described above is guaranteed per your Musco Warranty document and includes a 0.95 dirt depreciation factor.

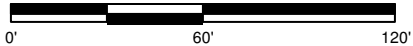
Field Measurements: Individual field measurements may vary from computer-calculated predictions and should be taken in accordance with IESNA RP-6-15.

Electrical System Requirements: Refer to Amperage Draw Chart and/or the "Musco Control System Summary" for electrical sizing.

Installation Requirements: Results assume ± 3% nominal voltage at line side of the driver and structures located within 3 feet (1m) of design locations.



SCALE IN FEET 1 : 60



Pole location(s) ⊕ dimensions are relative to 0,0 reference point(s) ⊗



We Make It Happen.

EQUIPMENT LIST FOR AREAS SHOWN

Pole				Luminaires				
QTY	LOCATION	SIZE	GRADE ELEVATION	MOUNTING HEIGHT	LUMINAIRE TYPE	QTY / POLE	THIS GRID	OTHER GRIDS
4	S1, S3-S4 S6	70'	-	70'	TLC-LED-1150	4	4	0
2	S2, S5	70'	-	70'	TLC-LED-1150	6	6	0
6	TOTALS					28	28	0

Burr Jones Park

Madison, WI

GRID SUMMARY

Name: Ultimate Field 1
Size: 360' x 120'
Spacing: 30.0' x 30.0'
Height: 3.0' above grade

ILLUMINATION SUMMARY

MAINTAINED HORIZONTAL FOOTCANDLES

Entire Grid	
Guaranteed Average:	30
Scan Average:	33.52
Maximum:	44
Minimum:	25
Avg / Min:	1.33
Guaranteed Max / Min:	2.5
Max / Min:	1.73
UG (adjacent pts):	1.39
CU:	0.42
No. of Points:	48

LUMINAIRE INFORMATION

Color / CRI: 5700K - 75 CRI
Luminaire Output: 121,000 / 52,000 lumens
No. of Luminaires: 28
Total Load: 32.2 kW

Luminaire Type	Lumen Maintenance		
	L90 hrs	L80 hrs	L70 hrs
TLC-LED-1150	>81,000	>81,000	>81,000
TLC-BT-575	>81,000	>81,000	>81,000

Reported per TM-21-11. See luminaire datasheet for details.

Guaranteed Performance: The ILLUMINATION described above is guaranteed per your Musco Warranty document and includes a 0.95 dirt depreciation factor.

Field Measurements: Individual field measurements may vary from computer-calculated predictions and should be taken in accordance with IESNA RP-6-15.

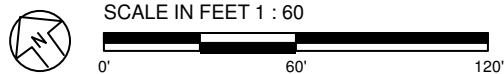
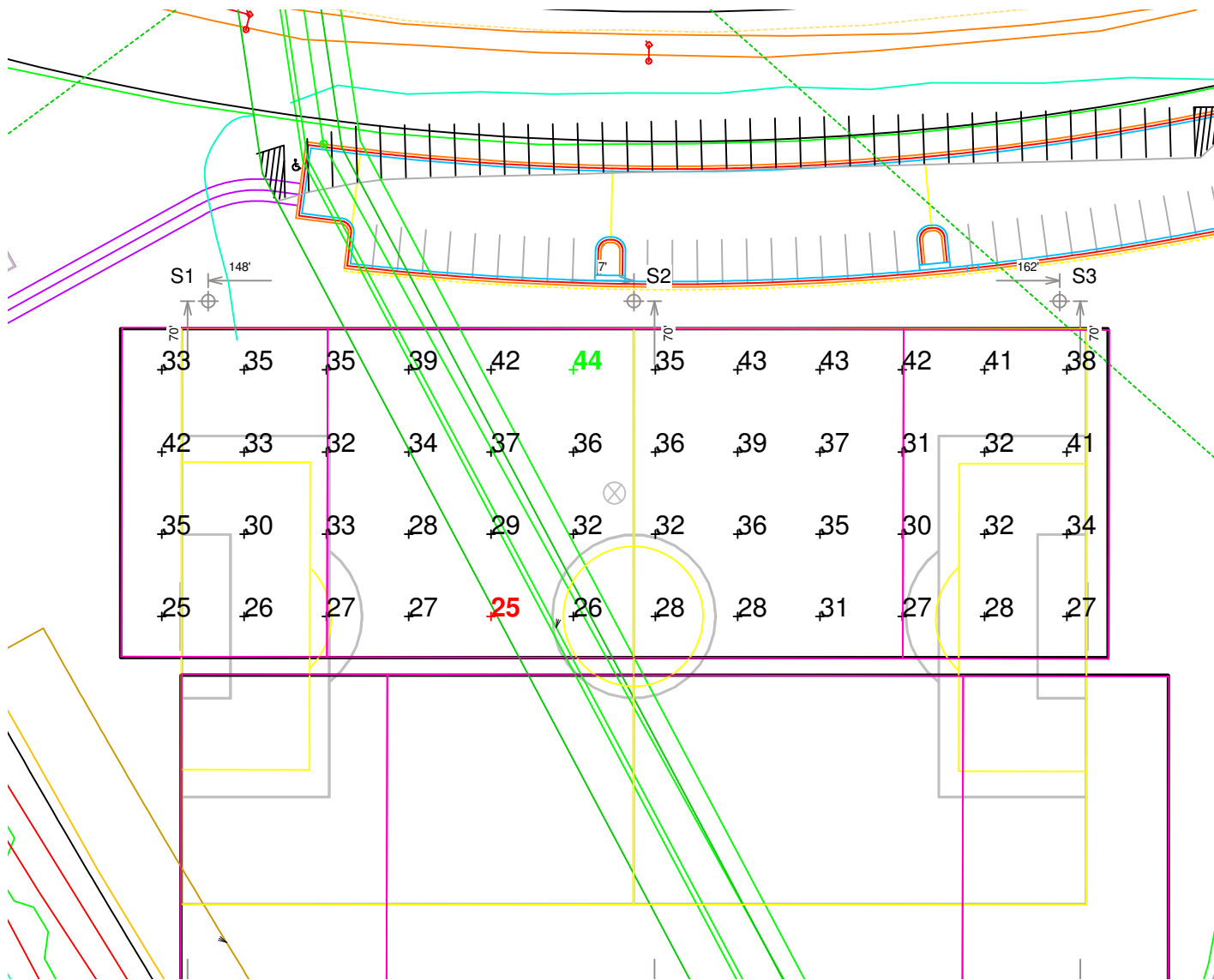
Electrical System Requirements: Refer to Amperage Draw Chart and/or the "Musco Control System Summary" for electrical sizing.

Installation Requirements: Results assume ± 3% nominal voltage at line side of the driver and structures located within 3 feet (1m) of design locations.



We Make It Happen.

Not to be reproduced in whole or part without the written consent of Musco Sports Lighting, LLC. ©1981, 2018 Musco Sports Lighting, LLC.



Pole location(s) ⊕ dimensions are relative to 0,0 reference point(s) ⊗

EQUIPMENT LIST FOR AREAS SHOWN

Pole				Luminaires				
QTY	LOCATION	SIZE	GRADE ELEVATION	MOUNTING HEIGHT	LUMINAIRE TYPE	QTY / POLE	THIS GRID	OTHER GRIDS
4	S1, S3-S4 S6	70'	-	70'	TLC-LED-1150	4	4	0
2	S2, S5	70'	-	70'	TLC-LED-1150	6	6	0
6	TOTALS					28	28	0

Burr Jones Park

Madison, WI

GRID SUMMARY

Name: Ultimate Field 2
Size: 360' x 120'
Spacing: 30.0' x 30.0'
Height: 3.0' above grade

ILLUMINATION SUMMARY

MAINTAINED HORIZONTAL FOOTCANDLES

Entire Grid	
Guaranteed Average:	30
Scan Average:	32.07
Maximum:	40
Minimum:	23
Avg / Min:	1.37
Guaranteed Max / Min:	2.5
Max / Min:	1.73
UG (adjacent pts):	1.47
CU:	0.40
No. of Points:	48

LUMINAIRE INFORMATION

Color / CRI: 5700K - 75 CRI
Luminaire Output: 121,000 / 52,000 lumens
No. of Luminaires: 28
Total Load: 32.2 kW

Luminaire Type	Lumen Maintenance		
	L90 hrs	L80 hrs	L70 hrs
TLC-LED-1150	>81,000	>81,000	>81,000
TLC-BT-575	>81,000	>81,000	>81,000

Reported per TM-21-11. See luminaire datasheet for details.

Guaranteed Performance: The ILLUMINATION described above is guaranteed per your Musco Warranty document and includes a 0.95 dirt depreciation factor.

Field Measurements: Individual field measurements may vary from computer-calculated predictions and should be taken in accordance with IESNA RP-6-15.

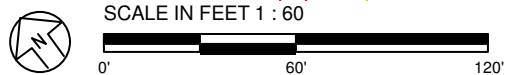
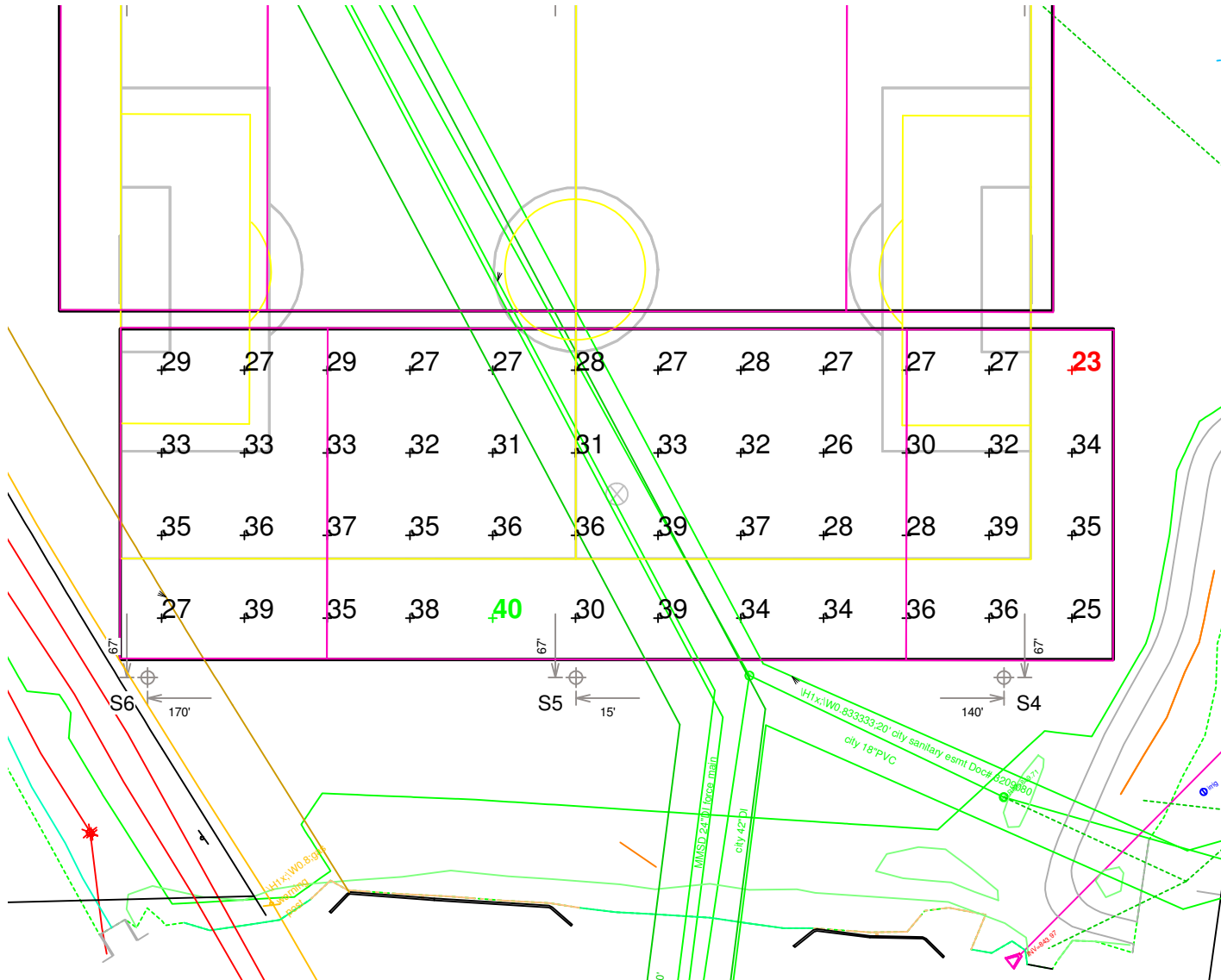
Electrical System Requirements: Refer to Amperage Draw Chart and/or the "Musco Control System Summary" for electrical sizing.

Installation Requirements: Results assume ± 3% nominal voltage at line side of the driver and structures located within 3 feet (1m) of design locations.



We Make It Happen.

Not to be reproduced in whole or part without the written consent of Musco Sports Lighting, LLC. ©1981, 2018 Musco Sports Lighting, LLC.



Pole location(s) ⊕ dimensions are relative to 0,0 reference point(s) ⊗