

N Blackhawk Ave, Bruce Ct, & Heather Crest Resurfacing 2018

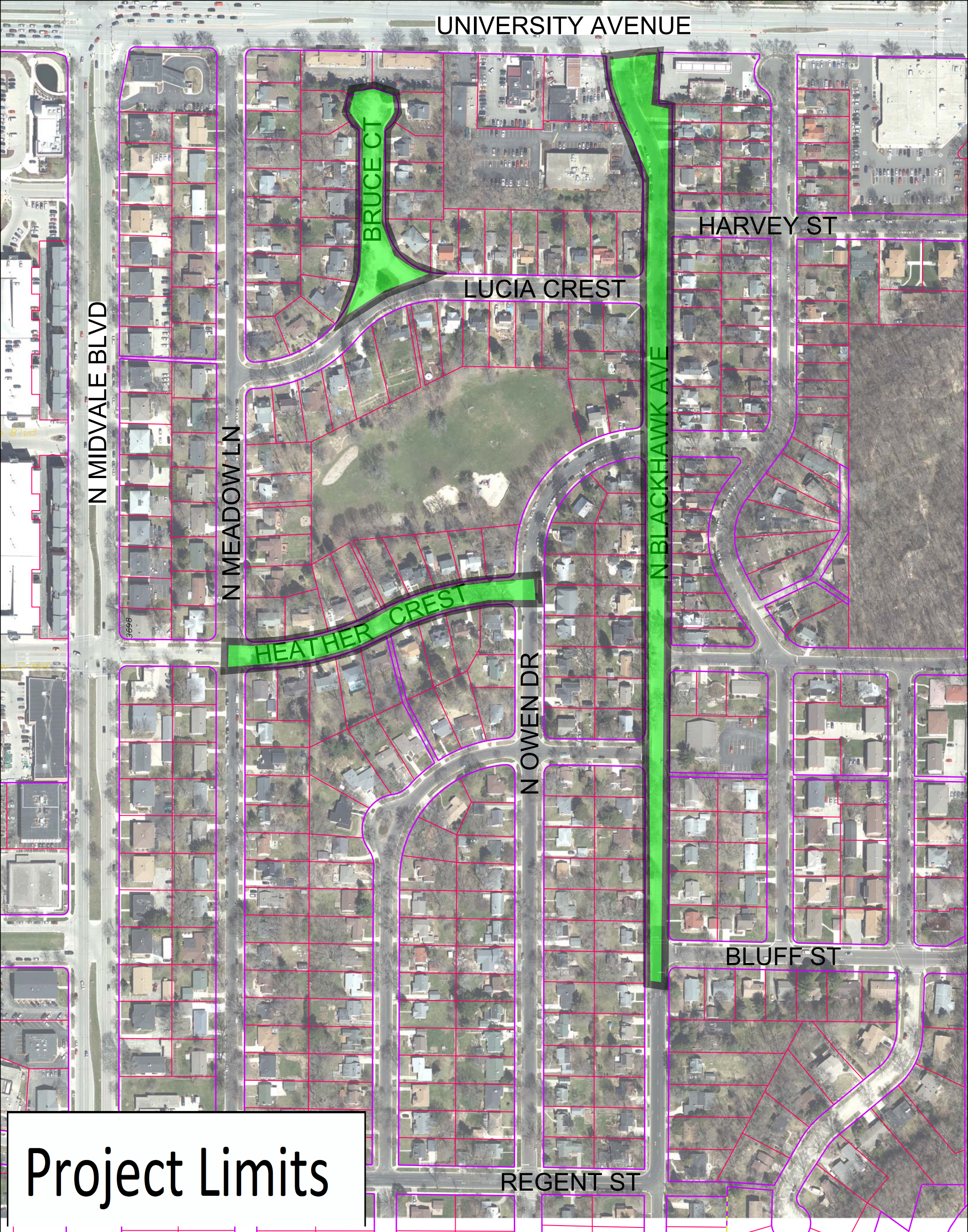
January 18th, 2018
Public Information Meeting



Meeting Agenda

- ▶ Staff Introduction
- ▶ Project Overview
 - Utility Work
 - Traffic Measures
 - Tree Removals
- ▶ Assessments
- ▶ Schedule
- ▶ Final Questions and Wrap-up





UNIVERSITY AVENUE

BRUCE CT

HARVEY ST

LUCIA CREST

N MIDVALE BLVD

N MEADOW LN

HEATHER CREST

N OWEN DR

N BLACKHAWK AVE

BLUFF ST

REGENT ST

Project Limits

Utility Work

- ▶ Sanitary Sewer Installation
 - Existing sewer is in poor condition (1940's era)
 - Double sewer main replaced with single main
 - Lateral replacements will be assessed



Sanitary Sewer



Sanitary sewer main segment on Bruce Court
between Lucia Crest and University Avenue.
Picture date: 3/30/2017.



Sanitary sewer main segment on North
Blackhawk Avenue. Picture date: 4/24/2017.

Utility Work

- ▶ Water main relocation and abandonment
 - Replace 6" cast iron pipe with 8" ductile iron pipe
 - 12 water main breaks since 1985
 - Water main under terrace north of Harvey St to be relocated to beneath street.
 - No Water Utility assessments



Water Utility
Replacement Limits

UNIVERSITY AVENUE

BRUCE CT

HARVEY ST

LUCIA CREST

N MIDVALE BLVD

N MEADOW LN

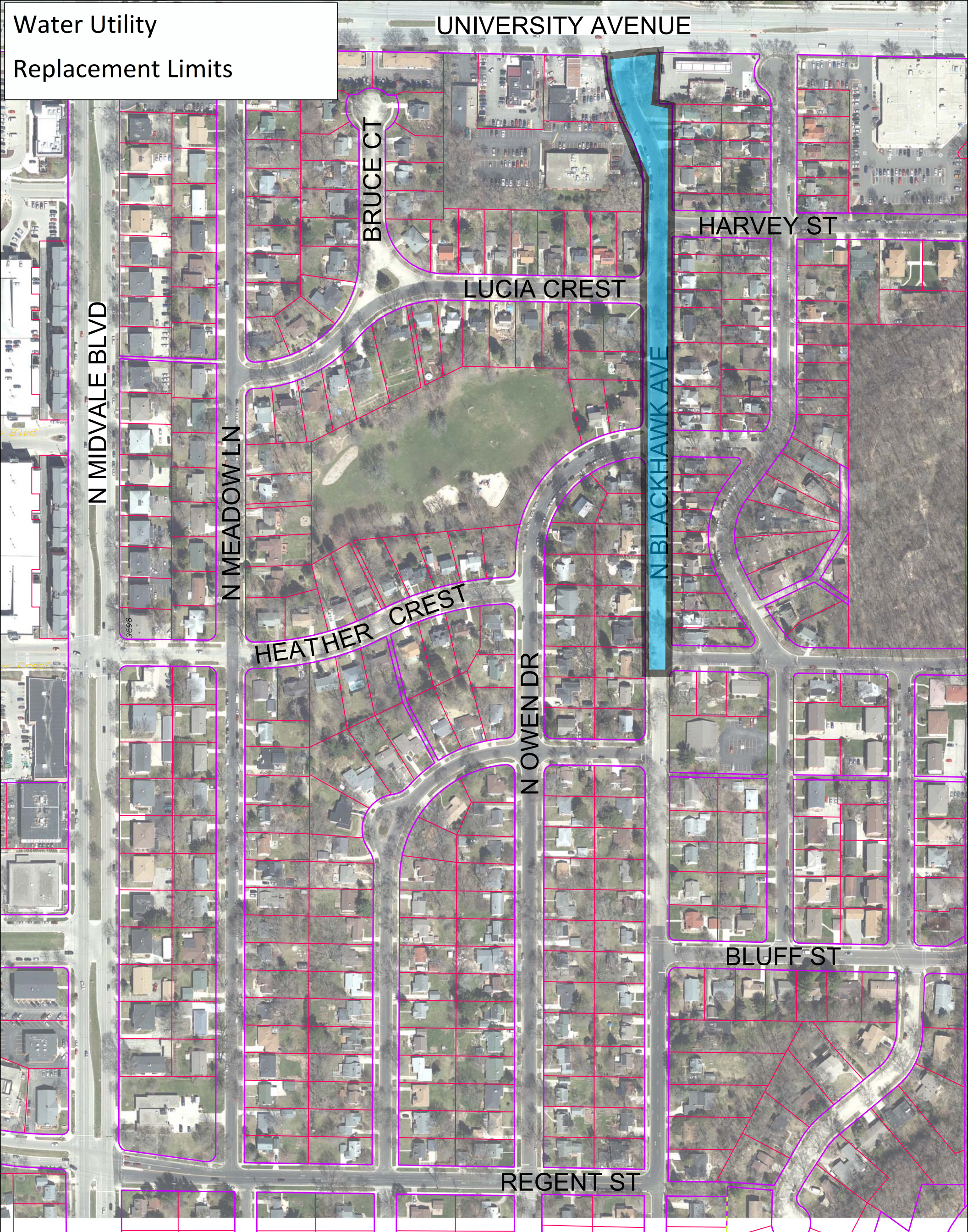
HEATHER CREST

N OWEN DR

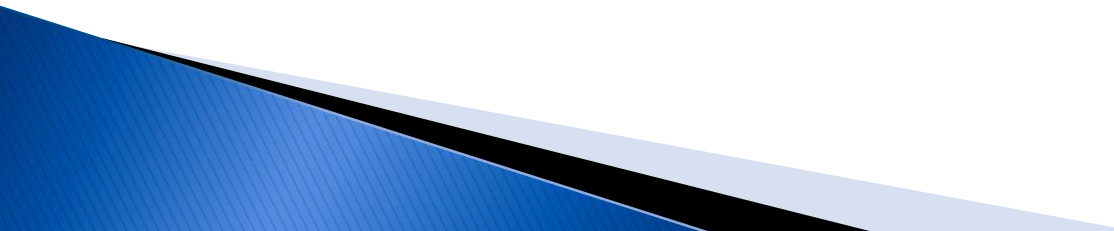
N BLACKHAWK AVE

BLUFF ST

REGENT ST




Traffic Measures

- ▶ Road open to local traffic only
 - ▶ Parking restricted during day, will be available to residents in evenings
 - ▶ Traffic calming being evaluated on Blackhawk Ave between Bluff St and Lucia Crest
- 

Tree Removals

- ▶ 17 tree removals (see Fact Sheet for locations)
 - 7 are preemptive ash removals
 - 7 are due to decay and deteriorating health
- ▶ Replacement trees are at discretion of City Forestry
 - Would be installed in Spring 2019

Assessments

- ▶ Corner Lots receive 50% assessment for sidewalk and curb replacement.
 - ▶ All driveway replacements will be concrete
 - ▶ Final assessments determined by contract bid prices.
 - ▶ Assessments payable by lump sum or at 3% interest over 8 years.
- 

Assessments (cont.)

- ▶ Average cost for home with 40' frontage:

Curb, Driveway, Sidewalk Replacement	\$2,300
---	---------

Sanitary Lateral Reconnection	\$2,350
----------------------------------	---------

\$4,650

Project Schedule

- ▶ Pedestrian, Bicycle, Motor Vehicle Commission
 - January 24th
- ▶ Board of Public Works (Public Hearing)
 - February 7th
- ▶ Construction begins May 2018
 - Approximately 4+ months to complete



Thank You For Attending!

Project Engineer

Chris Dawson

(608) 261-5537

cdawson@cityofmadison.com

