



Bid Talk

Metro Transit Hanson Rd Satellite Bus Facility Remodel

Bid Talk
City of Madison Engineering Division
10/3/2023

Thank you for attending. We will begin shortly...

CITY OF **MADISON**



Meeting Technical Housekeeping

- This meeting will be **recorded** and posted to the project page.
- All attendees should be **muted** to keep background noise to a minimum.
- Use the **“chat”** button for technical issues with meeting to troubleshoot with staff to assist.
- Use the **“Q and A”** button to type questions about presentation. Questions will be answered live after the presentation.
- Inappropriate questions may be dismissed.
- Use the **“raise your hand”** button to verbally ask your question. You will be prompted to unmute when it is your turn.



This meeting is being recorded.

It is a public record subject to disclosure.


By continuing to be in the meeting, you are consenting to being recorded and consenting to this record being released to public record requestors.

CITY OF **MADISON**

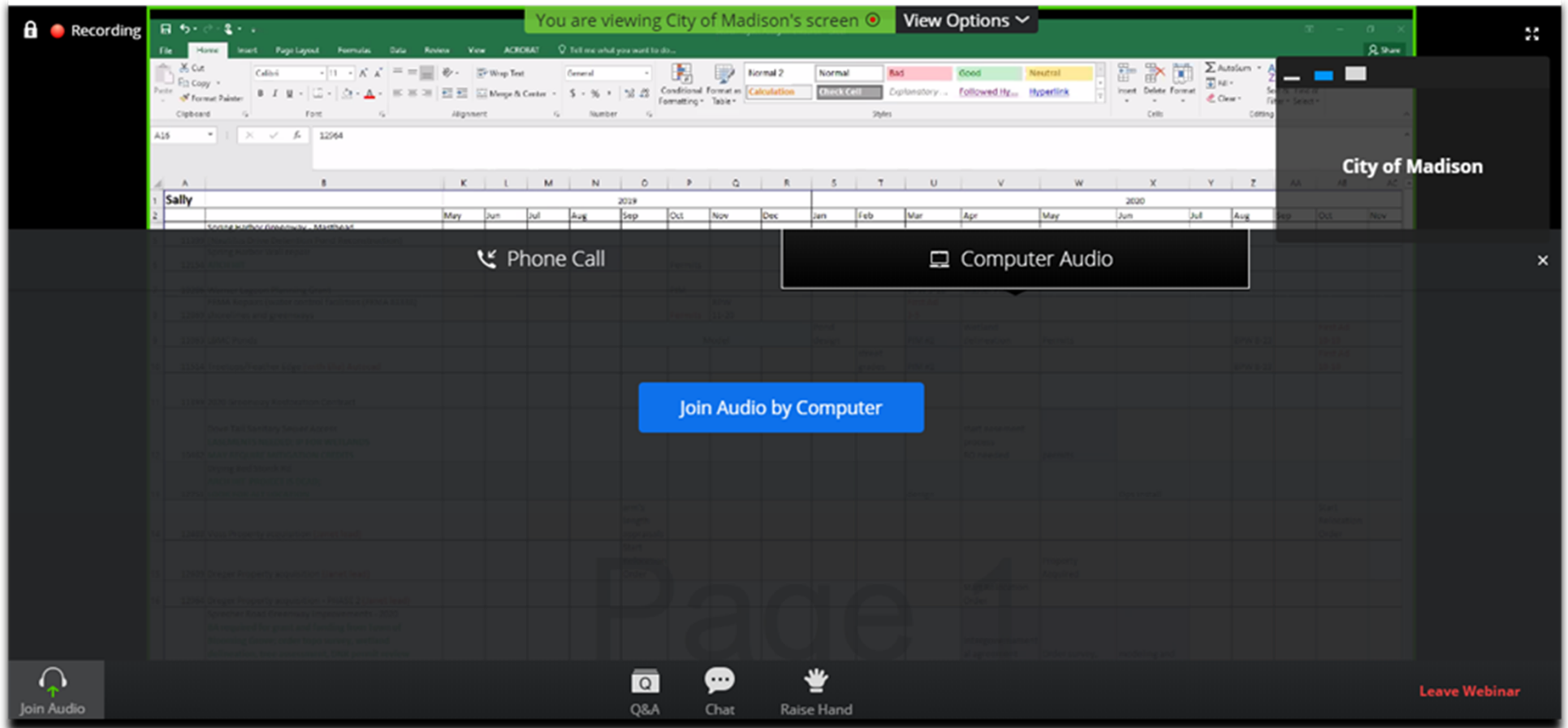


How to Participate

The screenshot displays a Zoom meeting interface. At the top, a green banner reads "You are viewing City of Madison's screen" with a "View Options" dropdown. Below this, an Excel spreadsheet is shared, showing a calendar for 2019 and 2020. The spreadsheet has columns for months and rows for years. A "City of Madison" window is visible in the top right corner. In the center, there are two audio options: "Phone Call" and "Computer Audio". A blue button labeled "Join Audio by Computer" is highlighted with a red arrow pointing to it. At the bottom left, there is a "Join Audio" button with a red arrow pointing to it. The bottom toolbar includes icons for "Join Audio", "Q&A", "Chat", and "Raise Hand". A "Leave Webinar" button is in the bottom right corner.

 Make sure to join audio

How to Participate



Raise your hand to be unmuted
For comments or ask additional questions.



CITY OF MADISON



How to Participate

The screenshot displays a Zoom meeting interface. At the top, a green banner reads "You are viewing City of Madison's screen" with a "View Options" dropdown. The main content is a shared Excel spreadsheet with a ribbon menu and a grid of data. A "City of Madison" logo is visible in the top right corner of the spreadsheet. Below the spreadsheet, there are two buttons: "Phone Call" and "Computer Audio". A blue button labeled "Join Audio by Computer" is centered below these. At the bottom of the Zoom window, there is a toolbar with icons for "Join Audio", "Q&A", "Chat", and "Raise Hand". A "Leave Webinar" button is located in the bottom right corner.

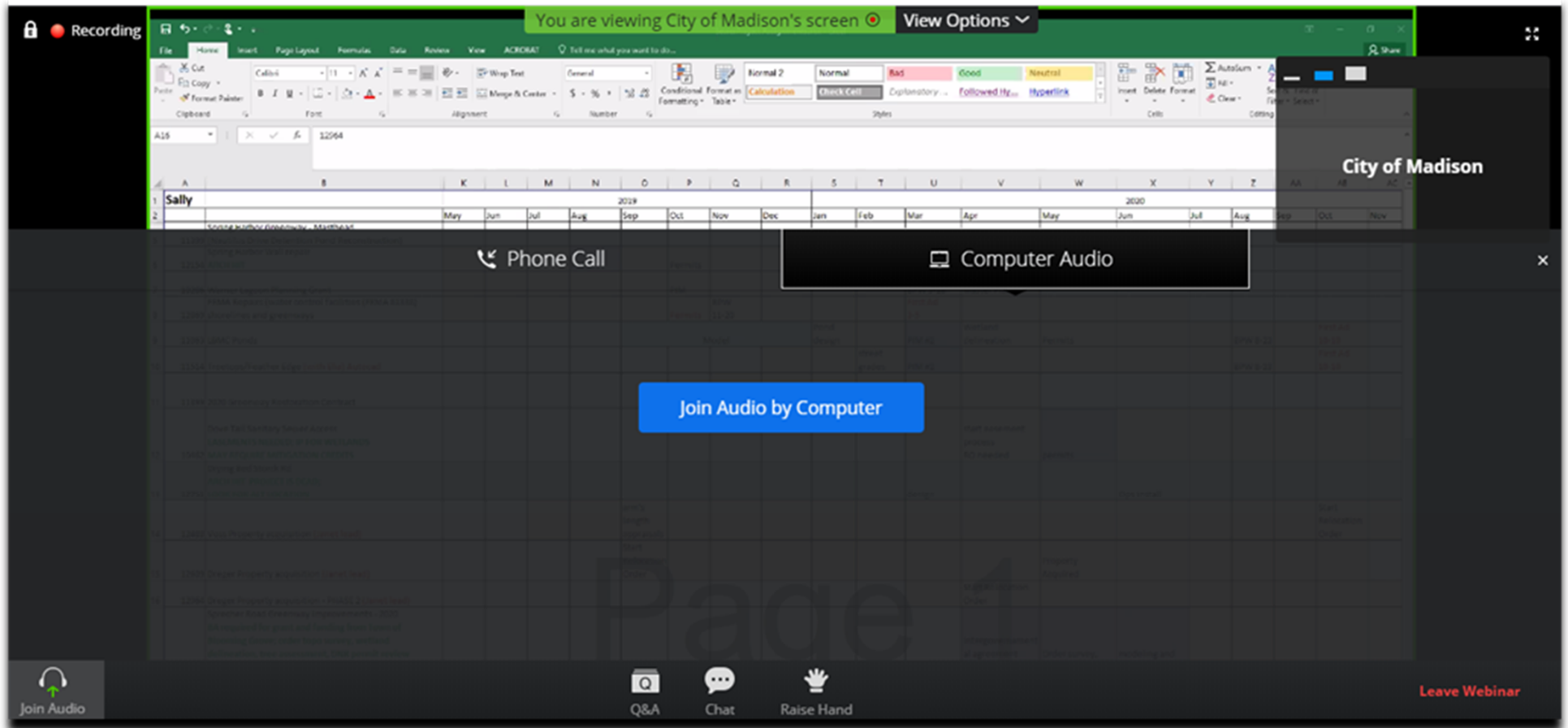
Use chat if you have technical issues or a question for the panelists



CITY OF MADISON



How to Participate



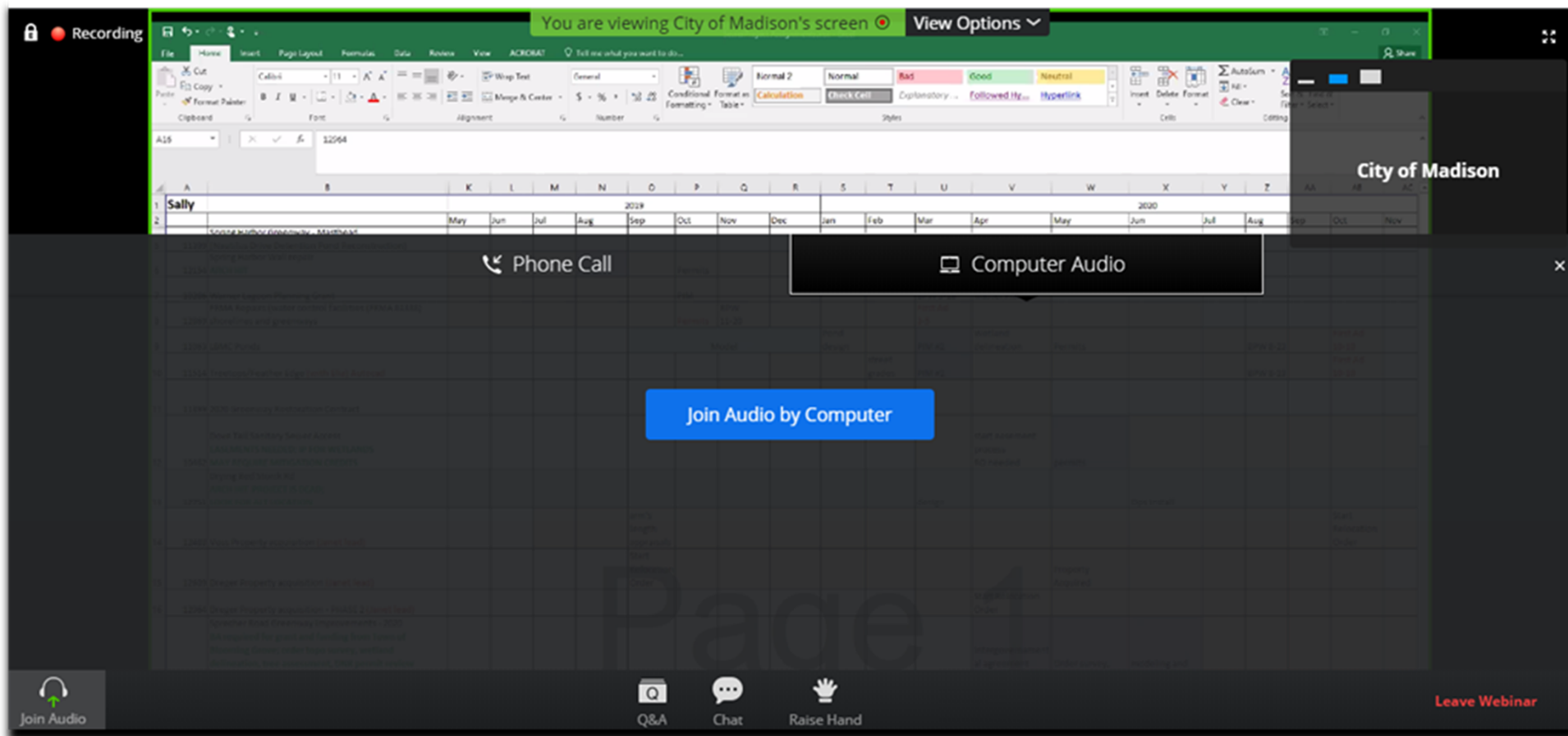
Use Q/A if you have questions.
We will answer after the presentation



CITY OF MADISON



How to Participate



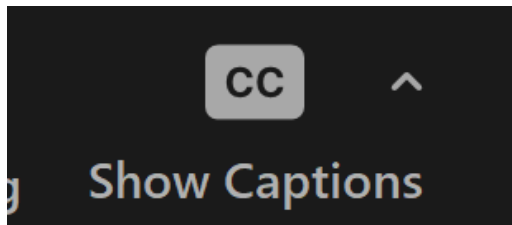
To leave the meeting
click here

CITY OF MADISON



Closed Captioning

- If you'd like to enable closed captioning, click "show closed captions" button on the bottom of the screen.
- This may already be enabled. If this is not enabled, click the button to allow closed captioning.





Alder District 17
Approximately 189,219 Square Feet
Estimated Construction Cost: \$18,975,000
Contract No. 9086

METRO TRANSIT HANSON RD SATELLITE BUS FACILITY REMODEL



Prepared by: J. Whitney
7/11/23
7/20/23

**METRO SATELLITE
BUS FACILITY**

3829-3901 HANSON ROAD
MADISON, WI 53704
CITY OF MADISON
METRO TRANSIT
1245 E WASHINGTON AVE #201
MADISON, WI 53703

PROJECT NUMBER 213419.00

ISSUED FOR:

DD REVIEW 5/26/2023

REVISION FOR:

NO. DESCRIPTION DATE



Pantograph Bus Charger



60' Electric Bus

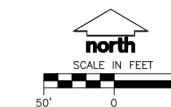


SITE INFORMATION BLOCK	
SITE ADDRESS	3901 HANSON ROAD
PROPERTY ACREAGE	37.8 ACRES (1,645,718 SF)
TOTAL BUILDING SQUARE FOOTAGE	191,257 SF
GROSS BUILDING SQUARE FOOTAGE	191,257 SF
NUMBER OF VEHICULAR PARKING STALLS	306
STANDARD ACCESSIBLE	13
BICYCLE STALLS:	
EXISTING STALLS (TO REMAIN)	8
PROPOSED STALLS	8
EXISTING VS. PROPOSED SITE COVERAGE (DISTURBED AREA)	
EXISTING IMPERVIOUS SURFACE AREA	30,373 SF
EXISTING PERVIOUS SURFACE AREA	1,417 SF
EXISTING IMPERVIOUS SURFACE AREA RATIO	.95
PROPOSED IMPERVIOUS SURFACE AREA	24,182 SF
PROPOSED PERVIOUS SURFACE AREA	7,668 SF
PROPOSED IMPERVIOUS SURFACE AREA RATIO	0.76

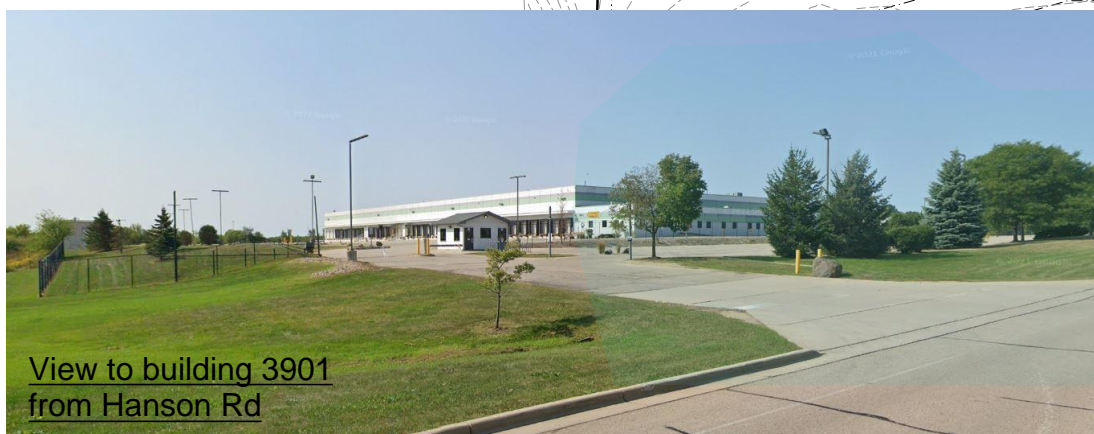
DRAWN BY CHG / MA

CHECKED BY MRH / K/JY

OVERALL SITE PLAN



C300



View to building 3901 from Hanson Rd

**METRO SATELLITE
BUS FACILITY**

3829-3901 HANSON ROAD
MADISON, WI 53704

CITY OF MADISON
METRO TRANSIT
1245 E WASHINGTON AVE #201
MADISON, WI 53703

PROJECT NUMBER 213419.00

ISSUED FOR:

DD REVIEW 5/26/2023

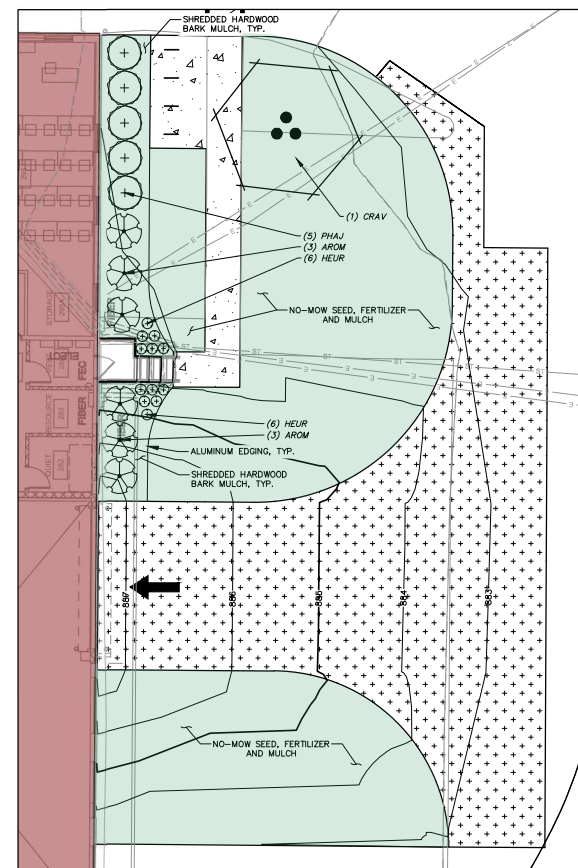
REVISION FOR:

NO. DESCRIPTION DATE

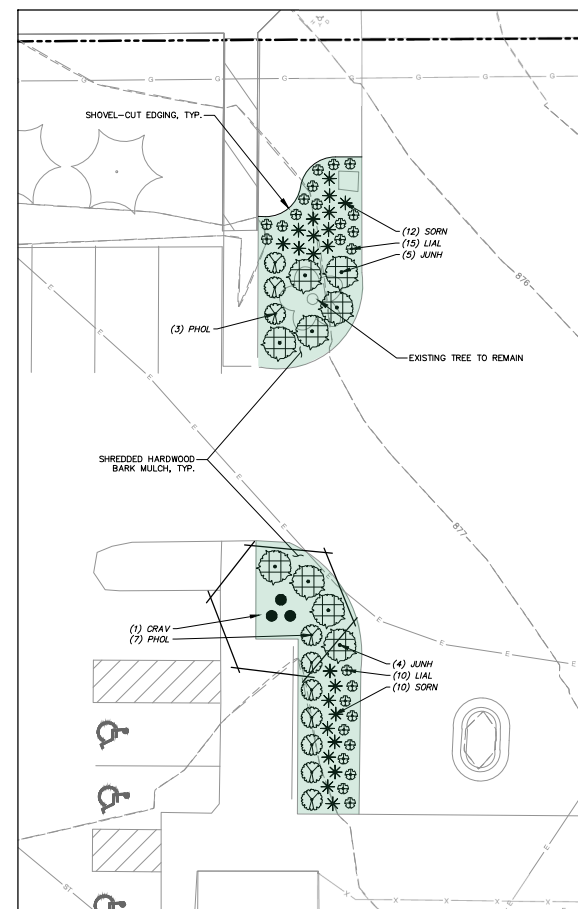
DRAWN BY CHG/MA

CHECKED BY MRH/KJY

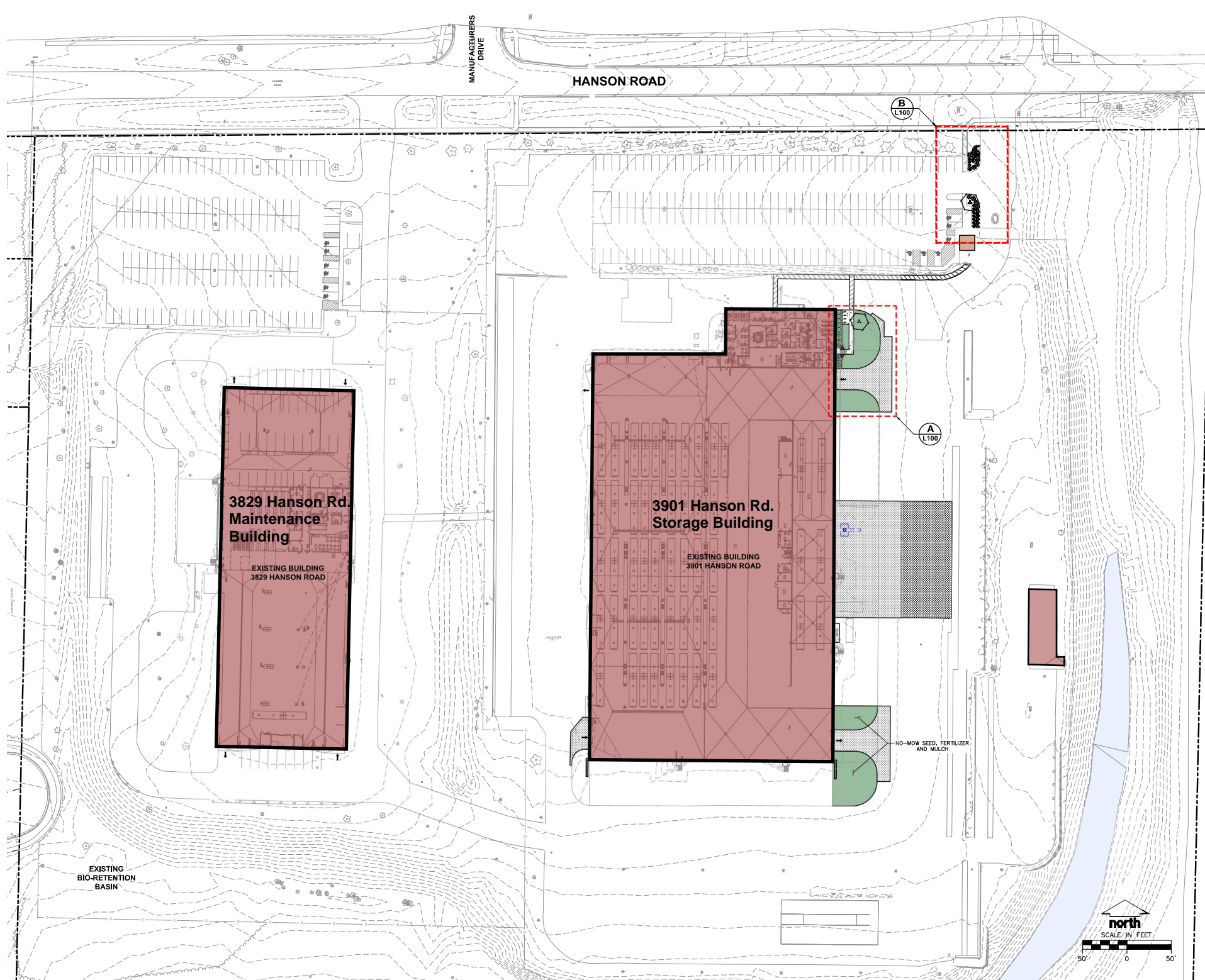
Landscape Plan



A BUILDING FOUNDATION PLANTINGS



B PARKING LOT PLANTINGS



LEGEND

---	PROPERTY LINE
---	RIGHT-OF-WAY
---	BUILDING OUTLINE
---	EDGE OF PAVEMENT
---	ASPHALT PAVEMENT
---	CONCRETE PAVEMENT
---	HEAVY DUTY CONCRETE PAVEMENT
---	PROPOSED 1 FOOT CONTOUR
---	PROPOSED 5 FOOT CONTOUR
---	EXISTING 1 FOOT CONTOUR
---	EXISTING 5 FOOT CONTOUR
---	BIKE RACK
---	EDGING

PLANT SCHEDULE

ORNAMENTAL TREES	CODE	BOTANICAL / COMMON NAME	CONT	SIZE	QTY
	ORAV	<i>Crataegus viridis</i> 'Winter King' Winter King Hawthorn	B & B	1.5" Cal. (Single Stem)	2
DECIDUOUS SHRUBS	CODE	BOTANICAL / COMMON NAME	CONT	SIZE	QTY
	AROM	<i>Aronia melanocarpa</i> Black Chokeberry	#5	Min. 24"-36"	6
	PHAJ	<i>Physocarpus opulifolius</i> Ninebark	#5	Min. 24"-36"	5
	PHOL	<i>Physocarpus opulifolius</i> 'Little Devil' TM Dwarf Ninebark	#3	Min. 24" tall	10
EVERGREEN SHRUBS	CODE	BOTANICAL / COMMON NAME	CONT	SIZE	QTY
	JUNH	<i>Juniperus horizontalis</i> Creeping Juniper	#5	Min. 24" wide	9
PERENNIALS & GRASSES	CODE	BOTANICAL / COMMON NAME	CONT	SIZE	QTY
	HEUR	<i>Heuchera richardsonii</i> Prairie Alum Root	#1	Min. 8"-18"	12
	LIAL	<i>Liatris ligulistylis</i> Meadow Blazing-star	#1	Min. 8"-18"	25
	SORN	<i>Sorghastrum nutans</i> Indian Grass	#1	Min. 8"-18"	22

GENERAL NOTES

- REFER TO THE EXISTING CONDITIONS SURVEY FOR EXISTING CONDITIONS NOTES AND LEGEND.
- ALL WORK IN THE ROW SHALL BE IN ACCORDANCE WITH THE MUNICIPAL STANDARD SPECIFICATIONS FOR PUBLIC WORKS CONSTRUCTION.
- JSD SHALL BE HELD HARMLESS AND DOES NOT WARRANT ANY DEVIATIONS BY THE OWNER/CONTRACTOR FROM THE APPROVED CONSTRUCTION PLANS THAT MAY RESULT IN DISCIPLINARY ACTIONS BY ANY OR ALL REGULATORY AGENCIES.
- DRAWING FOR REVIEW - NOT FOR CONSTRUCTION UNLESS OTHERWISE NOTED IN THE TITLE BLOCK.
- THE LANDSCAPE CONTRACTOR SHALL COORDINATE ALL FINE GRADING AND TOPSOILING WITH GENERAL CONTRACTOR.
- REFER TO "LANDSCAPE DETAILS AND NOTES" SHEET FOR ADDITIONAL DETAILS, NOTES AND SPECIFICATION INFORMATION INCLUDING MATERIALS, GUARANTEE AND EXECUTION RELATED TO LANDSCAPE PLAN.
- CONTRACTOR SHALL REVIEW SITE CONDITIONS FOR UTILITY CONFLICTS, DRAINAGE ISSUES, SUBSURFACE ROCK, AND PLANT PLACEMENT CONFLICTS PRIOR TO PLANT INSTALLATION. REPORT ANY CONDITIONS THAT MAY HAVE ADVERSE IMPACT ON PLANTING OPERATIONS TO LANDSCAPE ARCHITECT.
- DO NOT COMMENCE PLANTING OPERATIONS UNTIL ALL ADJACENT SITE IMPROVEMENTS, IRRIGATION INSTALLATION (IF APPLICABLE), AND FINISH GRADING ARE COMPLETE.

**METRO SATELLITE
BUS FACILITY**

3529-3901 HANSON ROAD
MADISON, WI 53704

CITY OF MADISON
METRO TRANSIT
1245 E WASHINGTON AVE #201
MADISON, WI 53703

PROJECT NUMBER 213416.00



In-Ground Lift

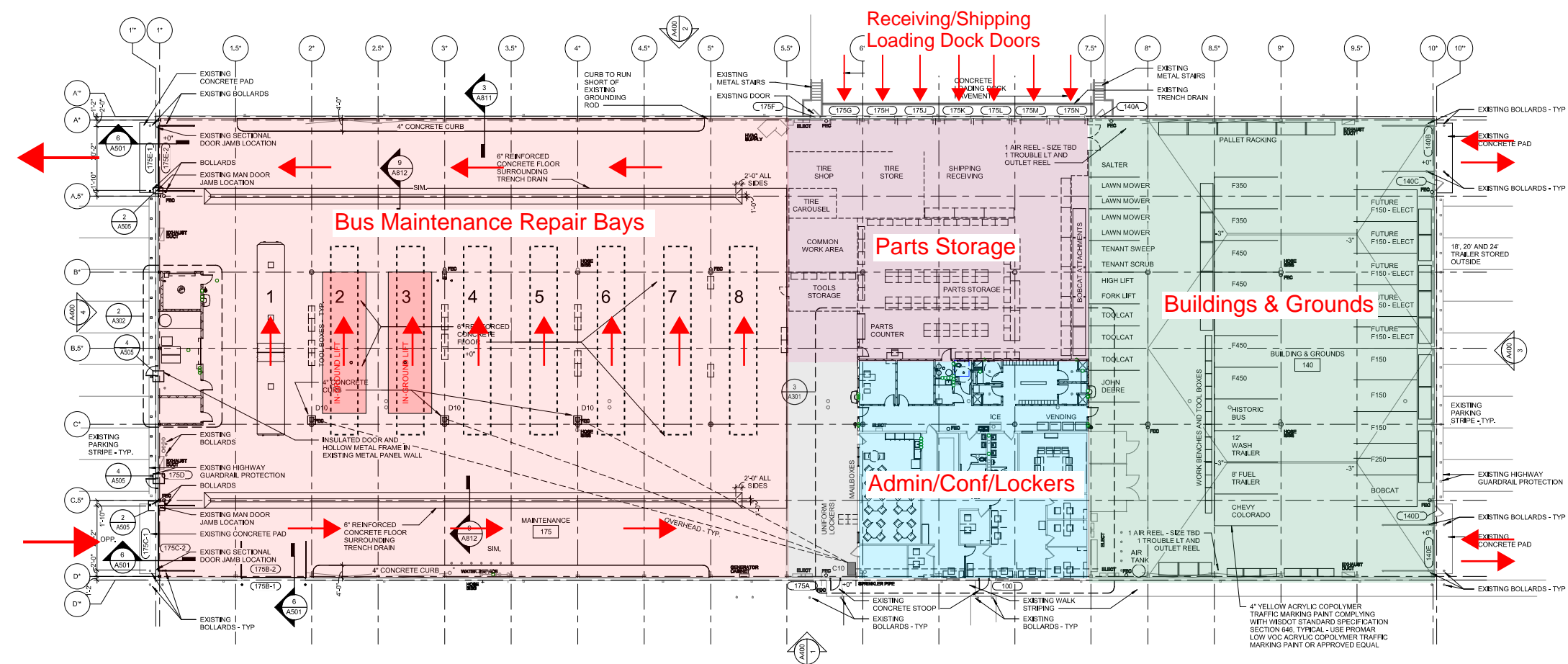


Bus Access Platform

GENERAL NOTES - FLOOR PLANS

	WALL PARTITION
	MASONRY WALL
	EXISTING WALL TO REMAIN
	DOOR AND FRAME - SEE DOOR SCHEDULE
	EXISTING DOOR AND FRAME TO REMAIN - SEE DOOR SCHEDULE

1. REFER TO MECHANICAL, ELECTRICAL, PLUMBING, FIRE PROTECTION, AND TECHNOLOGY DRAWINGS FOR ADDITIONAL INFORMATION.
2. SEE SHEET A401 FOR CODE INFORMATION.
3. SEE SHEET A601 FOR DOOR SCHEDULE AND PARTITION TYPES.
4. SEE SHEET A701 FOR FINISH INFORMATION.
5. INFILL AND PATCH EXISTING WALLS IN LOCATIONS WHERE WALLS AND ITEMS WERE REMOVED FROM WALLS TO REMAIN. PATCH AND REPAIR EXISTING WALLS, CEILINGS, AND FLOORS WHERE WALLS AND OTHER ITEMS WERE REMOVED DURING DEMOLITION TO MATCH ORIGINAL.
6. COORDINATE OPENINGS IN EXISTING WALLS WITH DEMOLITION CONTRACTOR.
7. DIMENSIONS ARE TO FACE OF CMU OR FINISHED FACE OF GYPSUM BOARD UNLESS NOTED OTHERWISE.
8. FURNITURE IS OWNER-FURNISHED, OWNER-INSTALLED UNLESS NOTED OTHERWISE.
9. REPLACE GYPSUM BOARD ON WALLS WHERE WAINSOT AND GYPSUM BOARD REMOVED PER DEMO PLANS. PROVIDE TAPED JOINTS AT TRANSITIONS TO EXISTING GYPSUM BOARD FINISH.
10. FOR BIDDING PURPOSES, ASSUME THAT ALL FIRE EXTINGUISHERS WILL HAVE TO BE TAKEN DOWN AND RE-MOUNTED.
11. LOCATE M.O. FOR DOOR FRAMES 4" FROM ADJACENT WALL UNLESS NOTED OTHERWISE.
12. MAINTENANCE BUILDING CIVIL ELEVATION: 100'-0" = 887.25'
13. STORAGE BUILDING CIVIL ELEVATION: 100'-0" = 887.20'



1 FLOOR PLAN - 3829
SCALE: 1/16" = 1'-0"

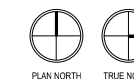
ISSUED FOR:		100% REVIEW	6/23/2023
REVISION FOR:		NO. DESCRIPTION	DATE

REVIEW SET - NOT FOR CONSTRUCTION

DRAWN BY	Author
CHECKED BY	Checker

FIRST FLOOR PLAN -
MAINTENANCE BUILDING

MAINTENANCE BUILDING
3829 Hanson Rd.



A100

**METRO SATELLITE
BUS FACILITY**

3528-3901 HANSON ROAD
MADISON, WI 53704

CITY OF MADISON
METRO TRANSIT
1245 E WASHINGTON AVE #201
MADISON, WI 53703

PROJECT NUMBER 213418.00

ISSUED FOR:

100% REVIEW 6/23/2023

REVISION FOR:

NO. DESCRIPTION DATE

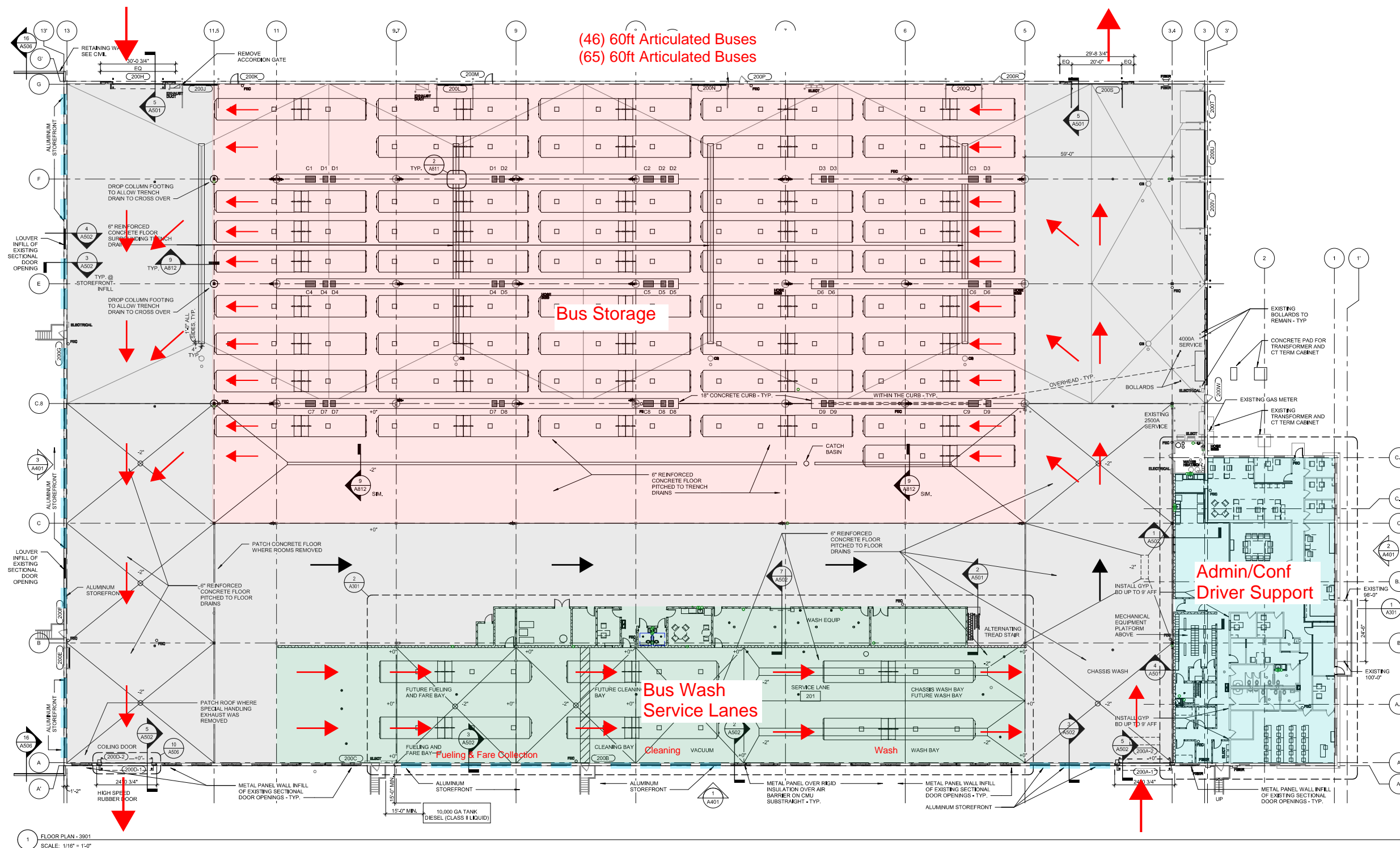
REVIEW SET - NOT FOR CONSTRUCTION

DRAWN BY: Author

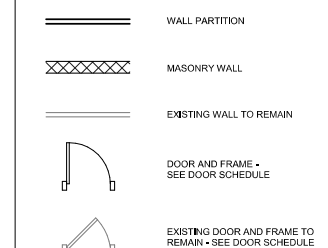
CHECKED BY: Checker

**FIRST FLOOR PLAN -
STORAGE BUILDING**

A101

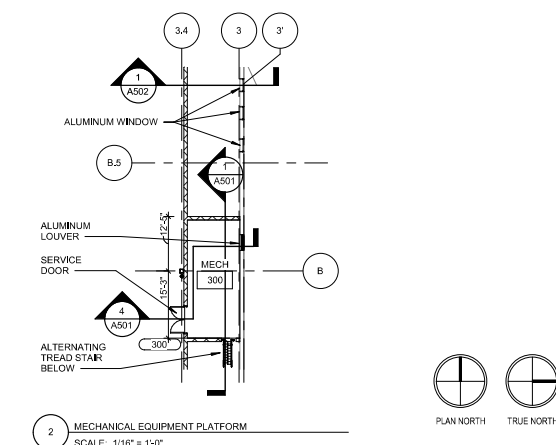


GENERAL NOTES - FLOOR PLANS



- REFER TO MECHANICAL, ELECTRICAL, PLUMBING, FIRE PROTECTION, AND TECHNOLOGY DRAWINGS FOR ADDITIONAL INFORMATION.
- SEE SHEET A001 FOR CODE INFORMATION.
- SEE SHEET A001 FOR DOOR SCHEDULE AND PARTITION TYPES.
- SEE SHEET A701 FOR FINISH INFORMATION.
- INFILL AND PATCH EXISTING WALLS IN LOCATIONS WHERE WALLS AND ITEMS WERE REMOVED FROM WALLS TO REMAIN. PATCH AND REPAIR EXISTING WALLS, CEILINGS, AND FLOORS WHERE WALLS AND OTHER ITEMS WERE REMOVED DURING DEMOLITION TO MATCH ORIGINAL.
- COORDINATE OPENINGS IN EXISTING WALLS WITH DEMOLITION CONTRACTOR.
- DIMENSIONS ARE TO FACE OF CMU OR FINISHED FACE OF GYPSUM BOARD UNLESS NOTED OTHERWISE.
- FURNITURE IS OWNER-FURNISHED, OWNER-INSTALLED UNLESS NOTED OTHERWISE.
- REPLACE GYPSUM BOARD ON WALLS WHERE WANSOCOT AND GYPSUM BOARD REMOVED PER DEMO PLANS. PROVIDE TAPED JOINTS AT TRANSITIONS TO EXISTING GYPSUM BOARD FINISH.
- FOR BIDDING PURPOSES, ASSUME THAT ALL FIRE EXTINGUISHERS WILL HAVE TO BE TAKEN DOWN AND RE-MOUNTED.
- LOCATE NO. FOR DOOR FRAMES 4" FROM ADJACENT WALL UNLESS NOTED OTHERWISE.
- MAINTENANCE BUILDING CIVIL ELEVATION: 100'-0" = 887.25'
- STORAGE BUILDING CIVIL ELEVATION: 100'-0" = 887.20'

BUS STORAGE BUILDING
3901 Hanson Rd.



Preliminary Concept Planning Schedule
Metro Transit Hanson Road Satellite Bus Facility

DRAFT - NOT FOR DISTRIBUTION

