

Monroe Street Reconstruction

Wingra Park Entrance Workshop

April 27, 2017



Tonight's Agenda

Thank you to Temple Beth El!

1. Workshop scope
2. Site visit
3. Small- and large-group discussions
4. Visual preferences

Monroe Street Planning Process

Summer-Fall
2016:
Community
Survey and
Meetings

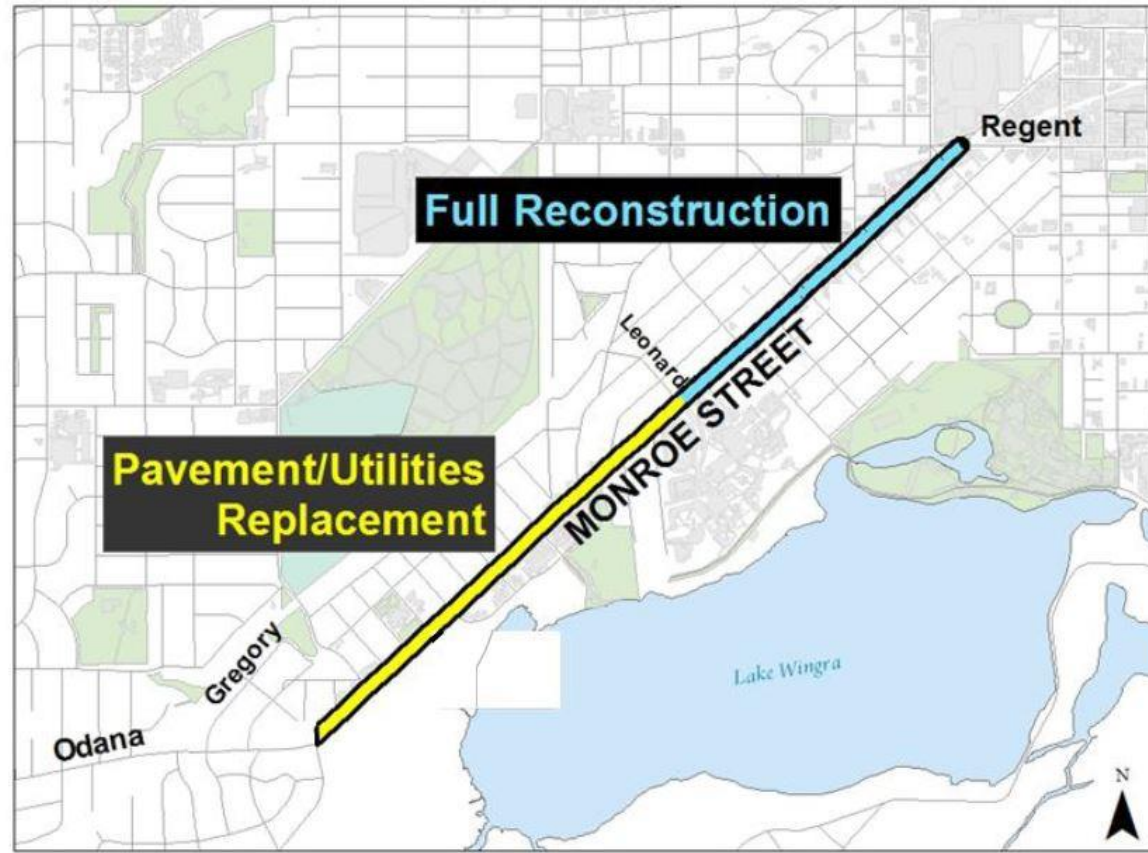
January 2017:
Cross Section
Approved

Spring-
Summer 2017:
Placemaking
and Corridor
Design
Meetings

Fall 2017:
Project out to
Bid

Monroe Street Scope & Timeline

- Reconstruction will occur from March-November 2018 (nine months)



- ✓ Utilities
- ✓ Street

2016 Community Survey Results

Top three placemaking projects:

55%

Sidewalk enhancements: Increase the width of the sidewalk from Wingra Park to Edgewood College Drive.

47%

Business District Enhancements: “Install seating, planters, banners, decorative lamp posts, etc.”

38%

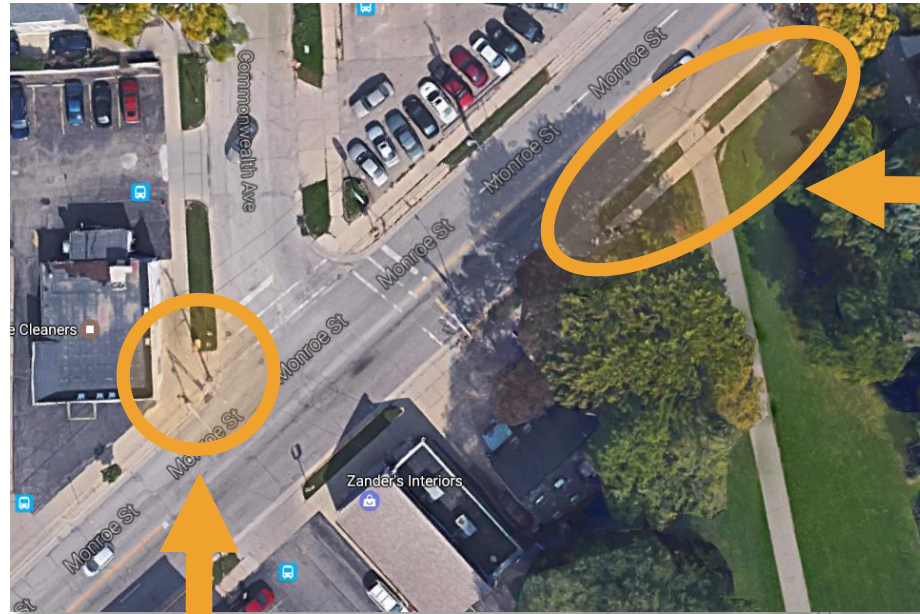
TIE

Wingra Park Orchard Garden: “Provide green space, seating and other enhancements to the orchard garden and ped/bike path entrance.”

37%

Crazy Legs Triangle: Close Crazy Legs Lane and provide enhancements such as landscaping, seating and community space.

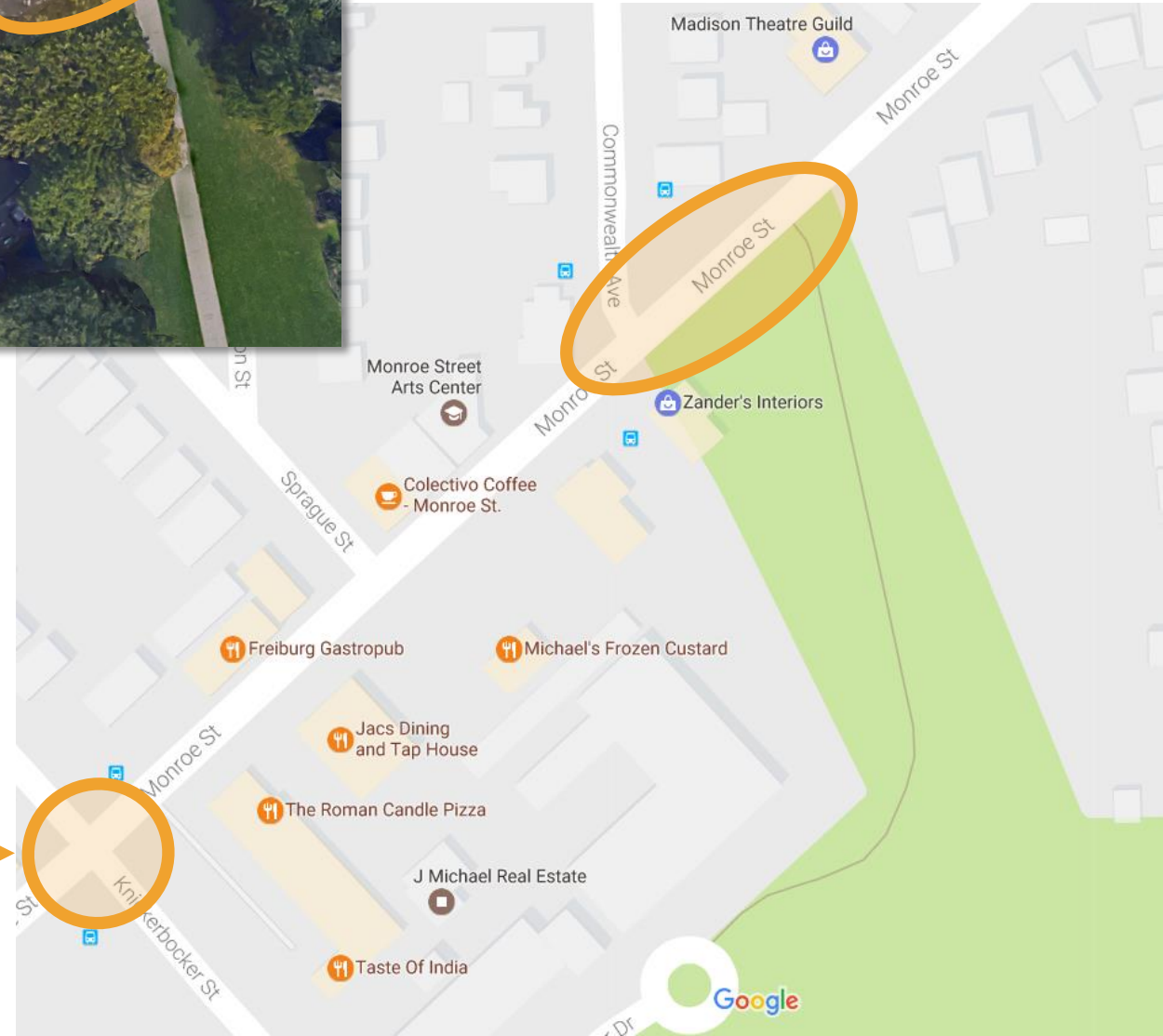
Wingra / Commonwealth Scope and Context



- Full width, 50' into park from back of sidewalk

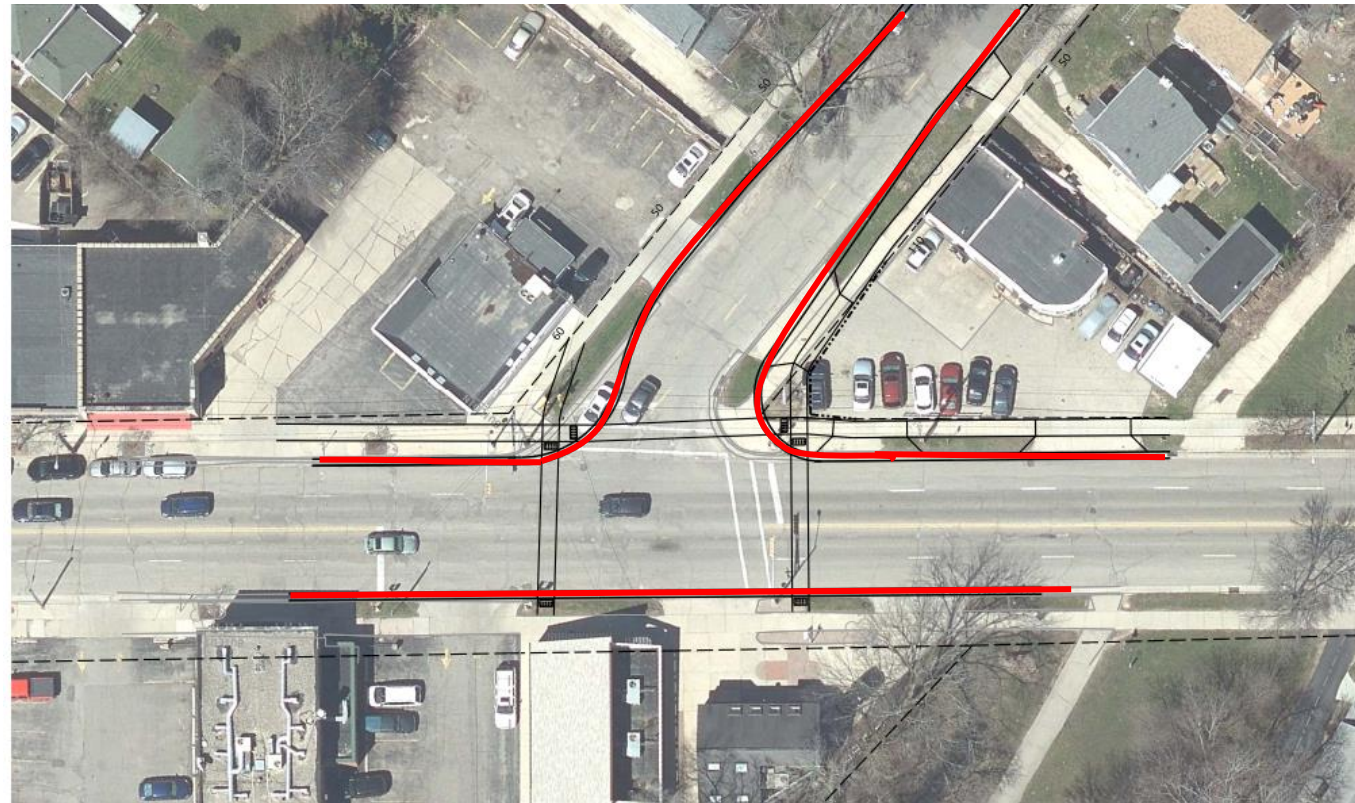
- West corner of Commonwealth

*Future raised
intersection at
Knickerbocker*





Commonwealth Realignment



Design Opportunities

- Wingra Park entrance*
 - Seating
 - Decorative plantings**
 - Public art
 - Interpretive signage
- Bus stop amenities*
- West Corner of Commonwealth
 - Rain garden or decorative plantings**
 - Seating
 - Paving
 - Public art (e.g., decorative utility box)

****Must receive approval from the Board of Park Commissioners if located on parkland.***

*****City will install, but must be privately maintained.***



Design Factors & Constraints

- Trees
- Signage
(entry, park rules, bike path)
- Viewshed preservation along
path (10ft on each side)
- Utilities
- Maintenance
- Four-season design
(aesthetics, access)
- Operations
(mowing, snow removal)



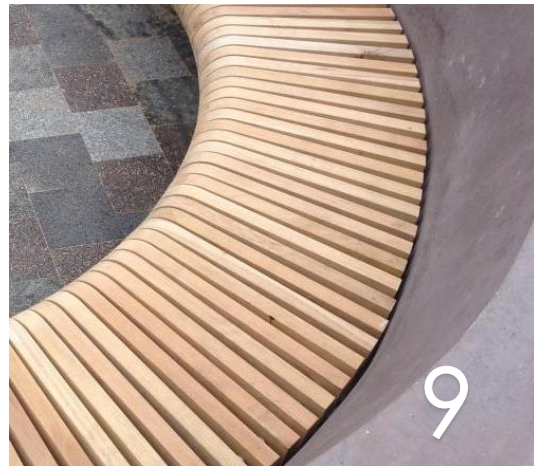
Site Visit

1. Walk to Wingra Park
2. Break into groups at the Wingra entrance and west corner of Commonwealth
3. Discuss:
 - What are the **current limitations** of this site?
 - What would make it more **functional and inviting**?
 - What would contribute to our goals of **placemaking and walkability**?

A solid orange square is positioned on the left side of the slide, occupying approximately the left third of the width.

Precedent Imagery

Seating



Decorative Plantings



Public Art



Bus Stop



Other Amenities



Corner of Commonwealth



A solid orange square is positioned on the left side of the slide.

Next Steps

Upcoming Corridor Design Meetings

- **July 5** **Preliminary Corridor Design Workshop**
6-8PM, Edgewood College
- **July 20** **Final Corridor Design Open House**
6-8PM, Edgewood College

***There will be a separate process
for Crazy Legs Triangle.***

For More Information:

- All meeting materials are posted online at City of Madison Engineering:
www.cityofmadison.com/engineering/projects/monroe-street
 - Subscribe to email updates.
 - View survey results, presentations and notes.
- Alder Eskrich, District 13:
www.cityofmadison.com/council/district13/
 - Subscribe to email updates.
 - Share additional comments.